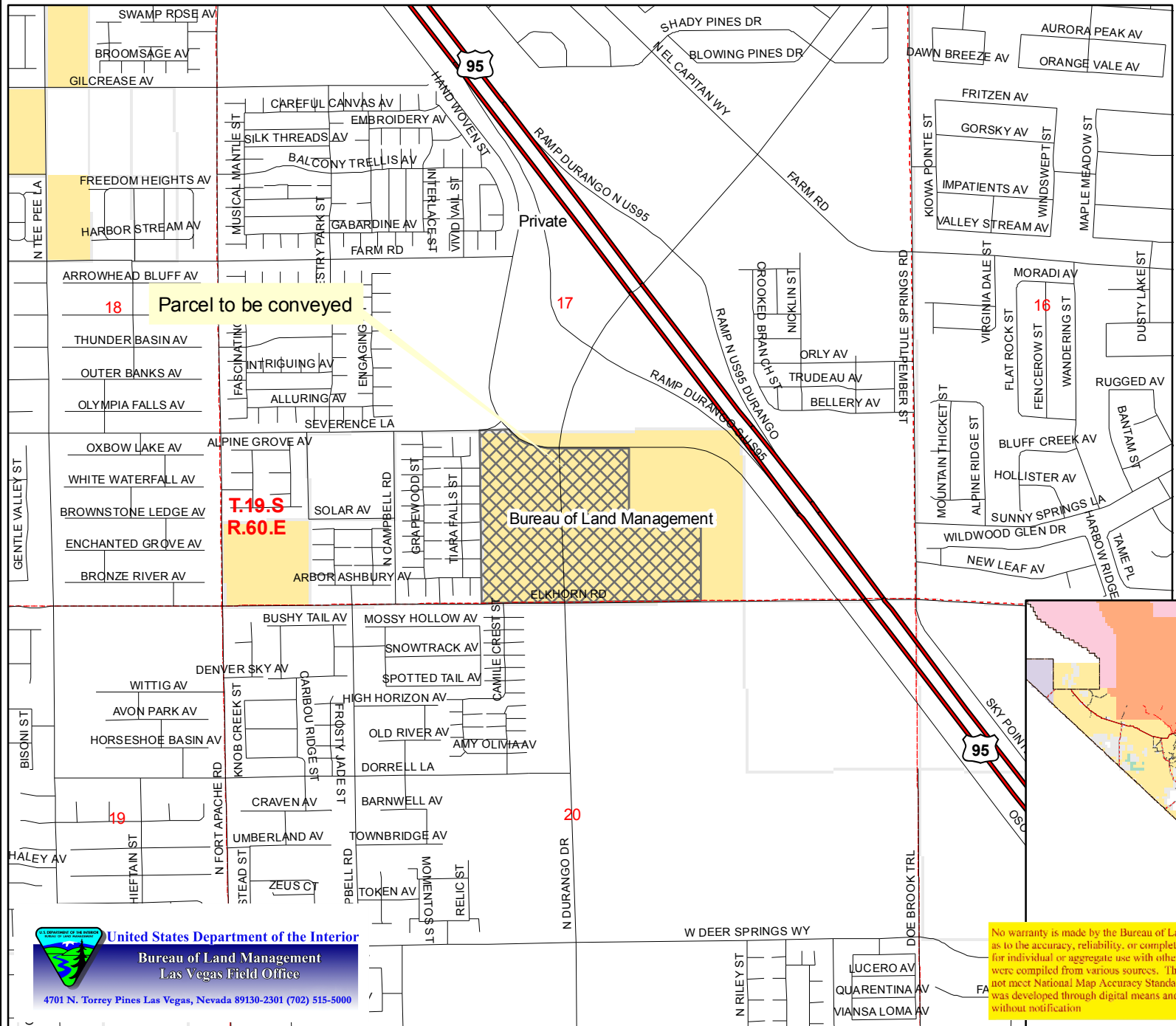


Southern Nevada Higher Education Land Act

College of Southern Nevada

This map prepared at the request of Senator Harry Reid 7-11-2008



Legend

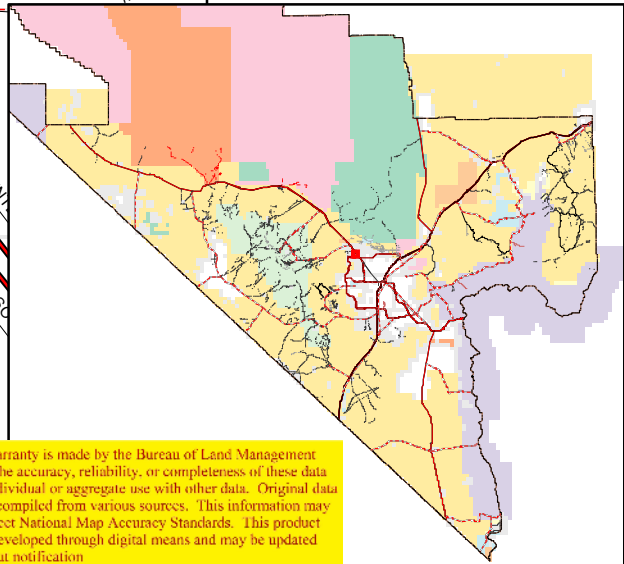
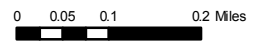
- Parcel to be conveyed
- Township Line
- Section Line

Road

- Interstate
- US Highway
- State Highway
- County Highway
- Street

Land Status

- Bureau of Indian Affairs
- Bureau of Land Management
- Bureau of Reclamation
- City of Las Vegas
- Clark County, Nevada
- Department of Defense
- Department of Energy
- Fish and Wildlife Service
- Forest Service
- National Park Service
- Nevada State
- Private



No warranty is made by the Bureau of Land Management as to the accuracy, reliability, or completeness of these data for individual or aggregate use with other data. Original data were compiled from various sources. This information may not meet National Map Accuracy Standards. This product was developed through digital means and may be updated without notification.

United States Department of the Interior
 Bureau of Land Management
 Las Vegas Field Office
 4701 N. Torrey Pines Las Vegas, Nevada 89130-2301 (702) 515-5000