

## Appendix H



Ian Drew/USFWS

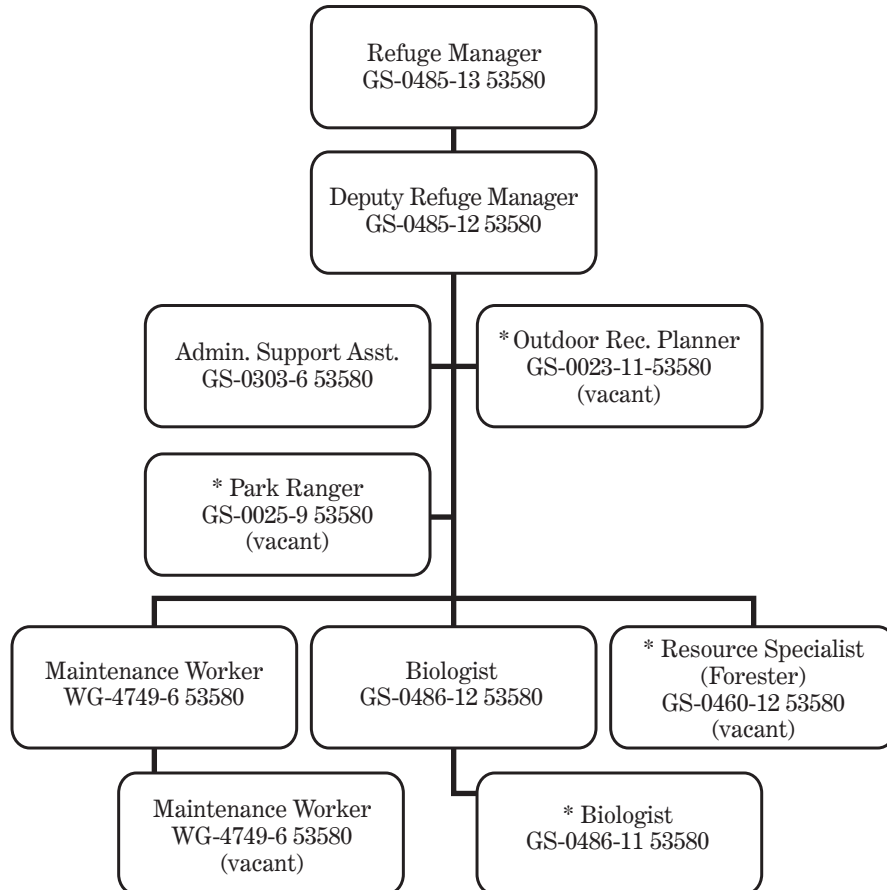
*Moose*

## Staffing Charts





U. S. Fish and Wildlife Service  
 Lake Umbagog National Wildlife Refuge  
 Current Approved Staff (Alternative A)

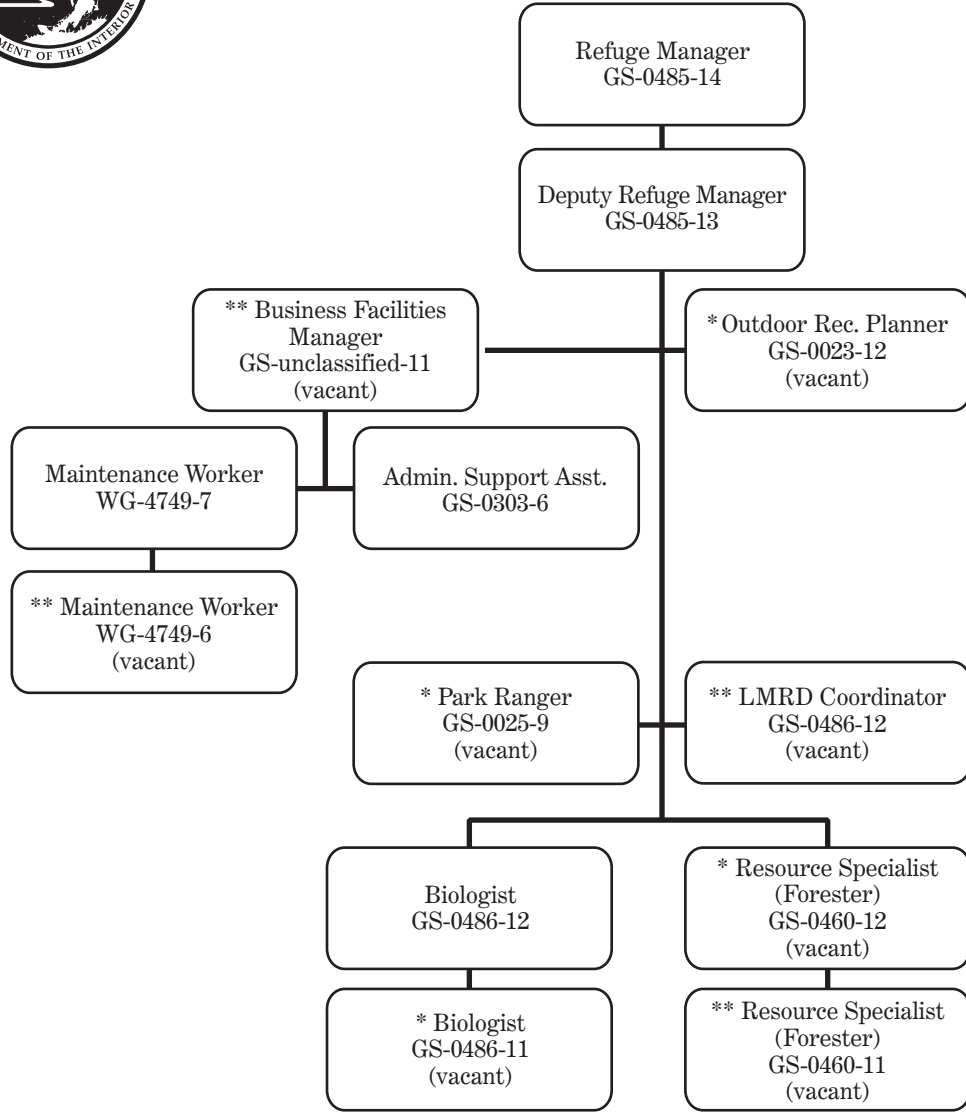


**Seasonal Staff includes:**  
 1 Biotech (GS-0404-7)  
 3 Interns  
 1 YCC Crew Leader  
 4 YCC Crew

\* Essential Staff



U. S. Fish and Wildlife Service  
 Lake Umbagog National Wildlife Refuge  
 Proposed Staff (Alternatives B and C)



\* Essential Staff  
 \*\* New Expanded Staff

GS levels indicate full performance level

**Seasonal Staff includes:**  
 2 Biotech (GS-0404-7)  
 4 Interns  
 1 YCC Crew Leader  
 4 YCC Crew  
 1 Maintenance Worker (WG-4749-5)  
 1 ORP GS-0023-09