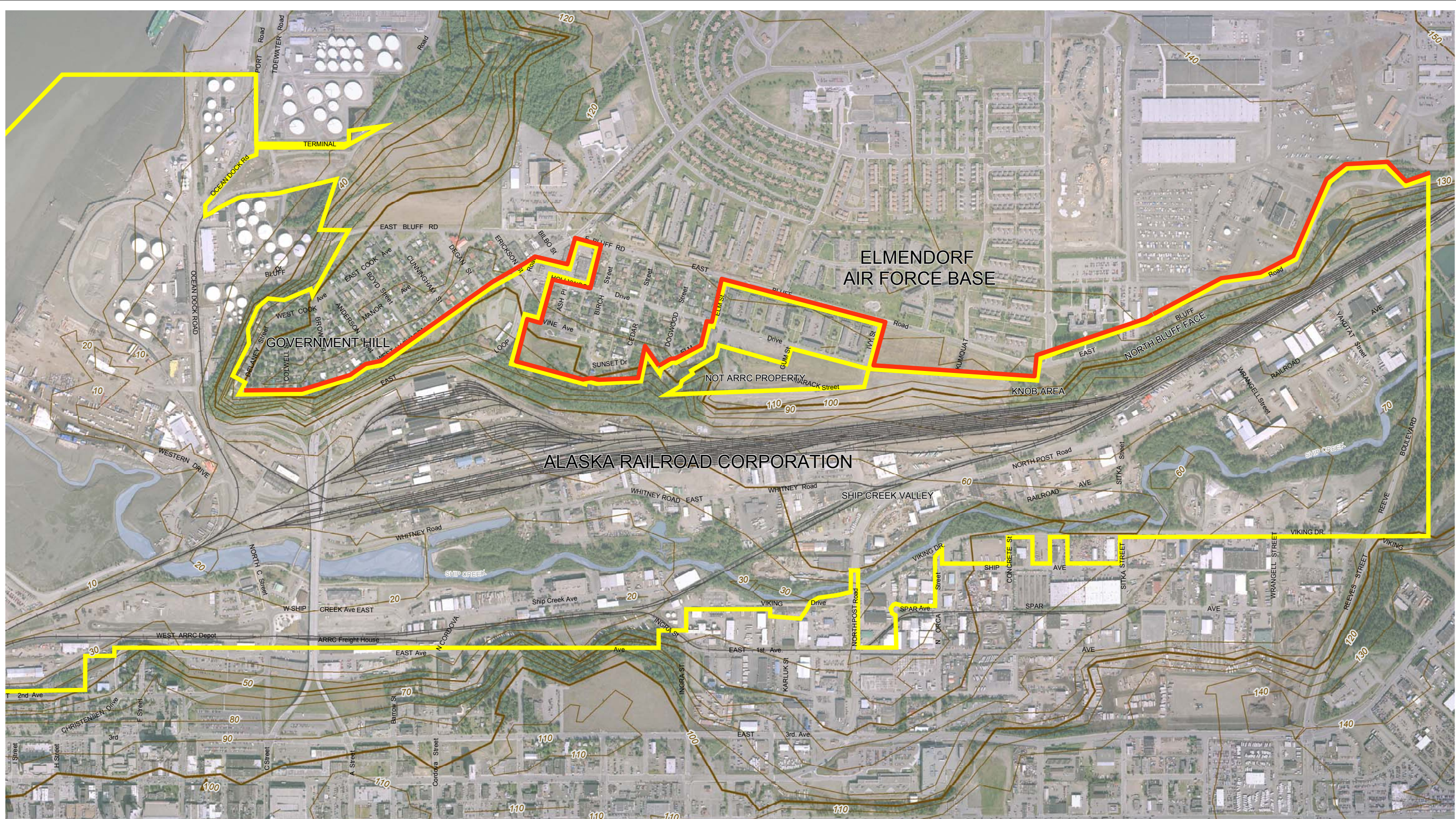





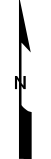
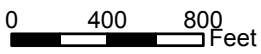
Figures



LEGEND

-  ANCHORAGE TERMINAL RESERVE
-  NORTH BOUNDARY OF ARRC (STUDY AREA)
-  10 FOOT CONTOUR INTERVAL (USGS)

NOTES:
 1. AERIAL PHOTO BASE TAKEN MAY 22, 2003, PROVIDED BY ARRC.
 2. PROPERTY BOUNDARY DIGITIZED FROM ARRC CAD BASEMAP AUGUST 12, 2004.



NORTH BOUNDARY ASSESSMENT WORK PLAN
 ARRC, ANCHORAGE TERMINAL RESERVE

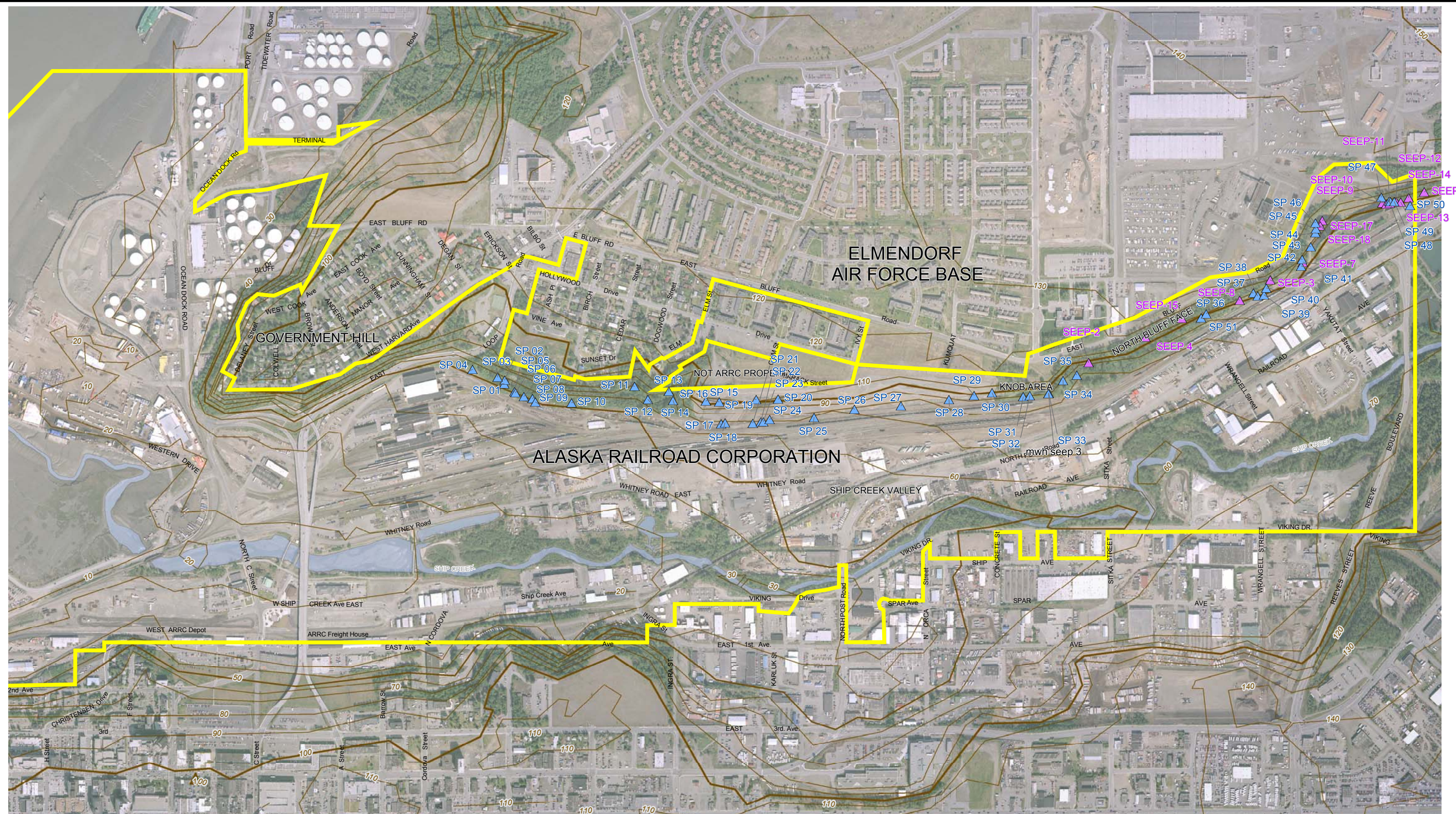
**LOCATION MAP AND
 PROPERTY OWNERSHIP**

DATE: 08/30/04





DWN. BY:KBL/ftc

FIGURE: 1-1

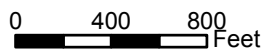




LEGEND

	ARRC PROPERTY BOUNDARY		SEEP 1 HISTORIC SEEP PREVIOUSLY SAMPLED
	10 FOOT CONTOUR INTERVAL (USGS)		SP 04 SPRING MAPPED IN AUGUST 2004

NOTES:
 1. AERIAL PHOTO BASE TAKEN MAY 22, 2003, PROVIDED BY ARRC.
 2. PROPERTY BOUNDARY DIGITIZED FROM ARRC CAD BASEMAP AUGUST 12, 2004.



NORTH BOUNDARY ASSESSMENT WORK PLAN
 ARRC, ANCHORAGE TERMINAL RESERVE

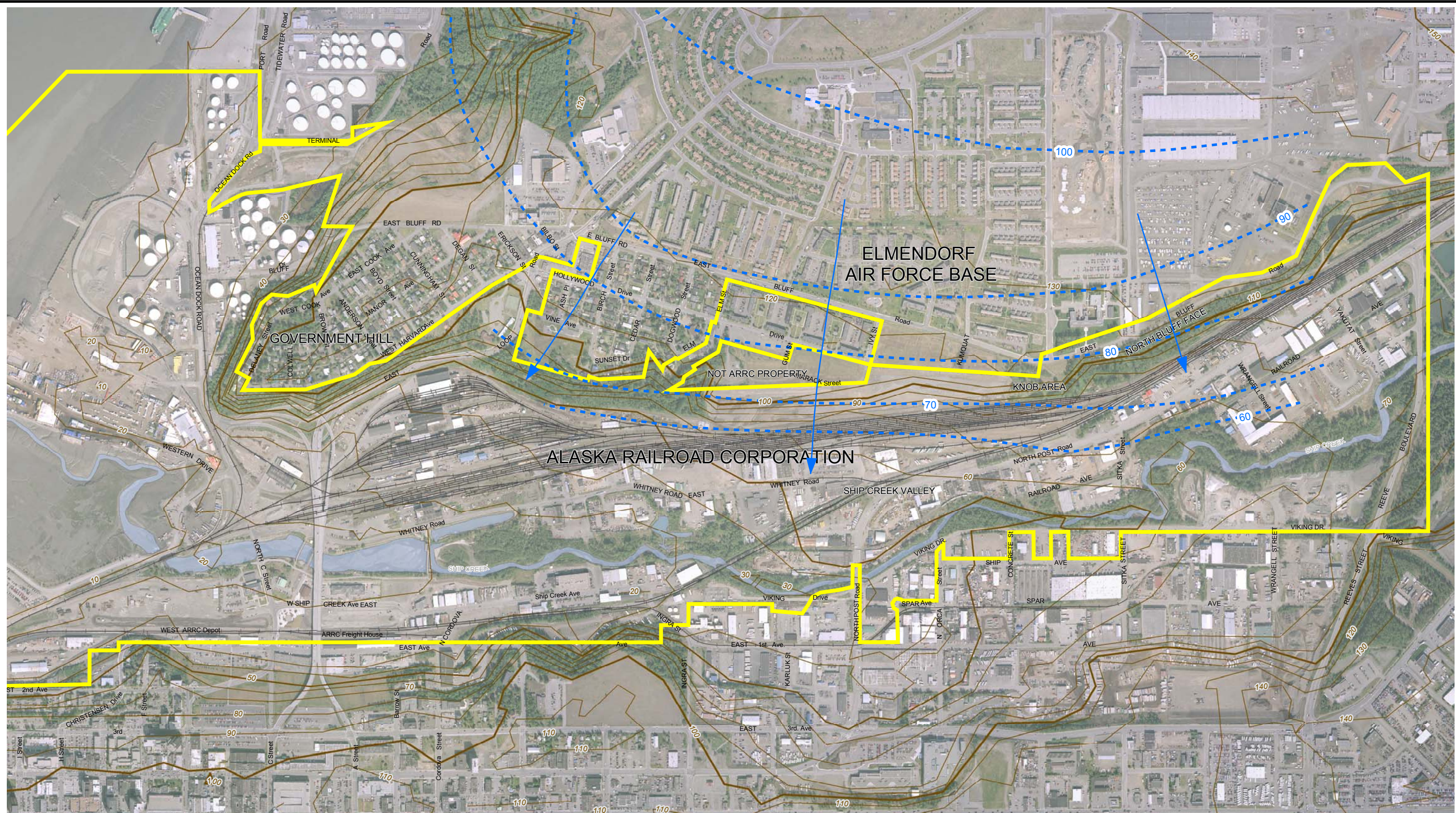
SPRING LOCATION MAP

DATE: 08/30/04

DWN. BY: KBL/ftc

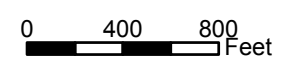
FIGURE: 2-1





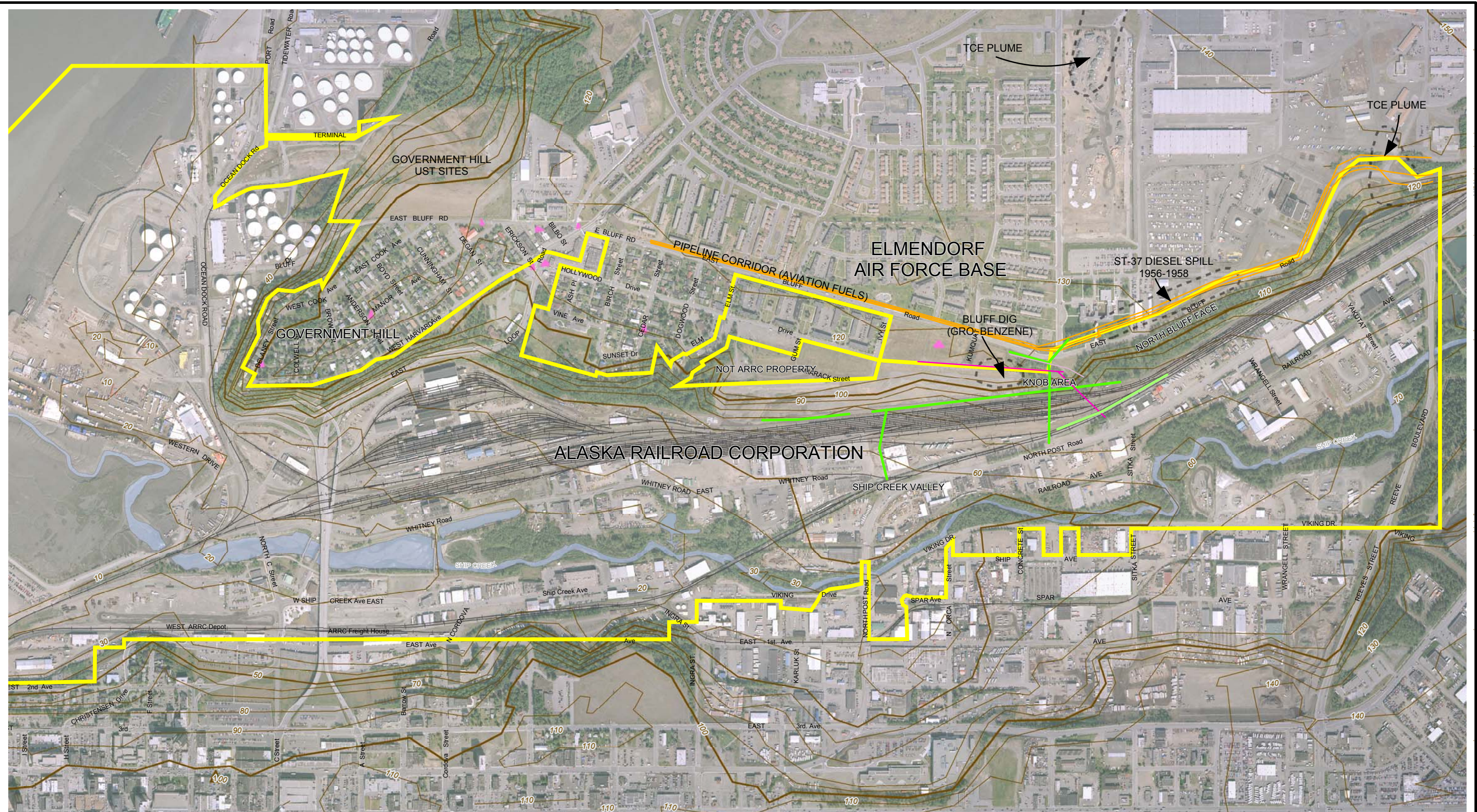
LEGEND	
	ARRC PROPERTY BOUNDARY
	10 FOOT CONTOUR INTERVAL (USGS)
	POTENTIOMETRIC CONTOURS - GENERALIZED
	GROUNDWATER FLOW DIRECTION

NOTES:
 1. AERIAL PHOTO BASE TAKEN MAY 22, 2003, PROVIDED BY ARRC.
 2. PROPERTY BOUNDARY DIGITIZED FROM ARRC CAD BASEMAP AUGUST 12, 2004.



NORTH BOUNDARY ASSESSMENT WORK PLAN ARRC, ANCHORAGE TERMINAL RESERVE	
DATE: 08/30/04	DWN. BY: KBL/ftc

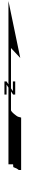
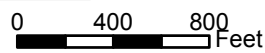
GENERALIZED GROUNDWATER POTENTIOMETRIC SURFACE/TOPOGRAPHIC MAP
FIGURE: 2-2



LEGEND

- ARRC PROPERTY BOUNDARY
- 10 FOOT CONTOUR INTERVAL (USGS)
- PIPELINE CORRIDOR (ESTIMATED LOCATION)
- WATER LINE (ESTIMATED LOCATION)
- STORM DRAIN (ESTIMATED LOCATION)
- FIBER OPTIC (ESTIMATED LOCATION)
- UST SITES

NOTES:
 1. AERIAL PHOTO BASE TAKEN MAY 22, 2003, PROVIDED BY ARRC.
 2. PROPERTY BOUNDARY DIGITIZED FROM ARRC CAD BASEMAP AUGUST 12, 2004.



NORTH BOUNDARY ASSESSMENT WORK PLAN
 ARRC, ANCHORAGE TERMINAL RESERVE

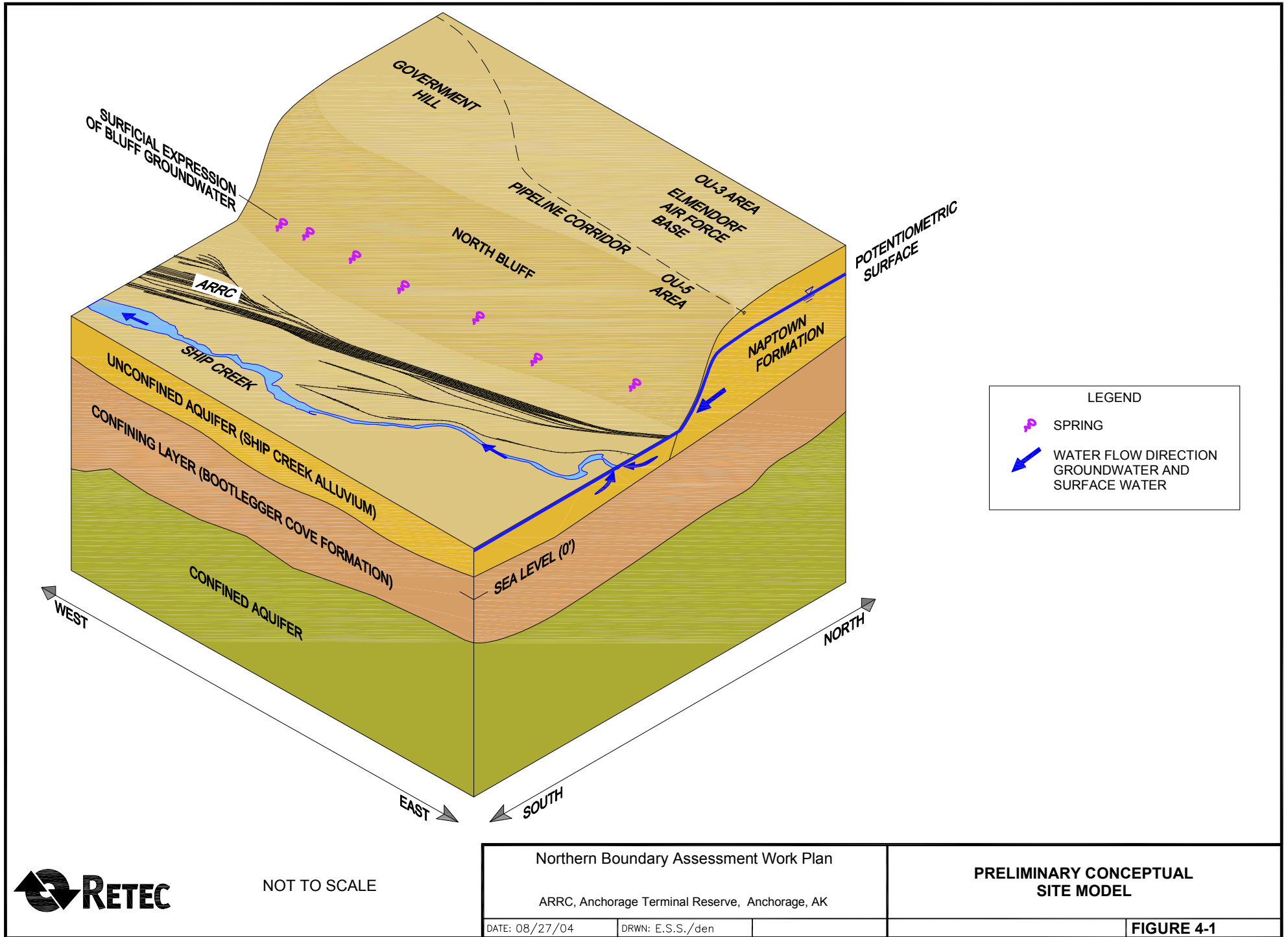
**SPILL HISTORY AND
 POTENTIAL UPGRADIENT SOURCES**

DATE: 08/30/04



DWN. BY: KBL/ftc

FIGURE: 3-1





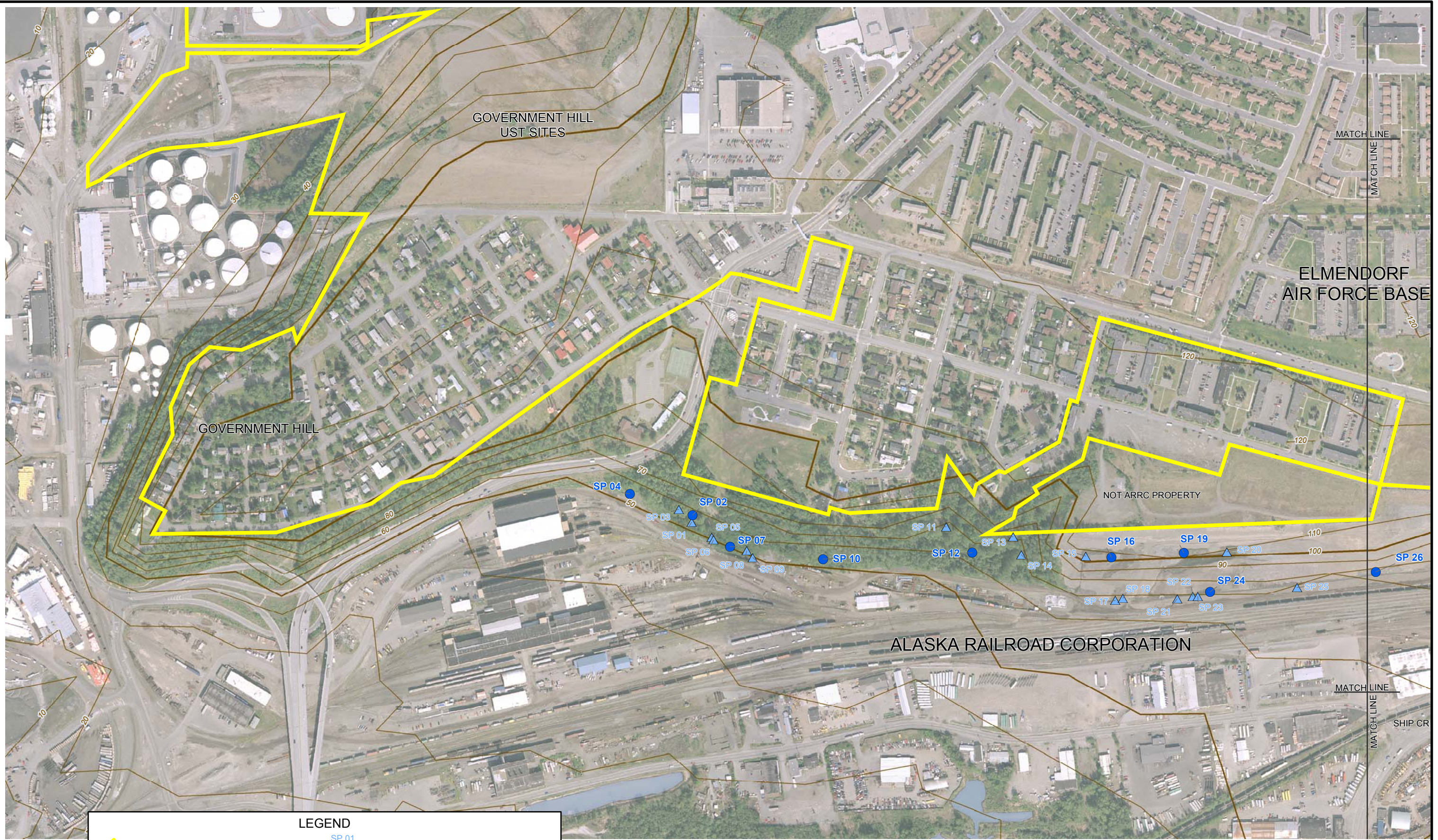
LEGEND

-  SPRING
-  WATER FLOW DIRECTION GROUNDWATER AND SURFACE WATER







NOT TO SCALE

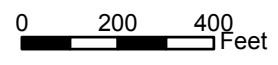
Northern Boundary Assessment Work Plan		PRELIMINARY CONCEPTUAL SITE MODEL
ARRC, Anchorage Terminal Reserve, Anchorage, AK		
DATE: 08/27/04	DRWN: E.S.S./den	FIGURE 4-1



LEGEND

	ARRC PROPERTY BOUNDARY		SEEP/WELL IDENTIFIED IN FIELD
	10 FOOT CONTOUR INTERVAL (USGS)		PROPOSED SAMPLING LOCATION

NOTES:
 1. AERIAL PHOTO BASE TAKEN MAY 22, 2003, PROVIDED BY ARRC.
 2. PROPERTY BOUNDARY DIGITIZED FROM ARRC CAD BASEMAP AUGUST 12, 2004.



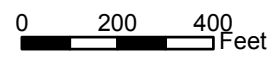
NORTH BOUNDARY ASSESSMENT WORK PLAN ARRC, ANCHORAGE TERMINAL RESERVE		PROPOSED SAMPLING LOCATIONS (WEST BLUFF)
DATE: 08/30/04	DWN. BY: KBL/ftc	FIGURE: 5-1A





LEGEND	
	ARRC PROPERTY BOUNDARY
	10 FOOT CONTOUR INTERVAL (USGS)
	SP 01 SEEP/WELL IDENTIFIED IN FIELD
	SP 01 PROPOSED SAMPLING LOCATION

NOTES:
 1. AERIAL PHOTO BASE TAKEN MAY 22, 2003, PROVIDED BY ARRC.
 2. PROPERTY BOUNDARY DIGITIZED FROM ARRC CAD BASEMAP AUGUST 12, 2004.



NORTH BOUNDARY ASSESSMENT WORK PLAN
 ARRC, ANCHORAGE TERMINAL RESERVE

**PROPOSED SAMPLING LOCATIONS
 (EAST BLUFF)**

DATE: 08/30/04	DWN. BY: KBL/ftc	FIGURE: 5-1B
----------------	------------------	--------------

