



AMBASSADOR'S FUND 2005

REFURBISH CHAN CHAN ARCHAEOLOGICAL SITE MUSEUM

Chan Chan, dated A.D. 950 to 1400 and located in the northern part of Peru, was declared World Heritage Site and Endangered World Monument by UNESCO in 1986 and 1996 respectively. The site includes a site museum and three temples from the pre Hispanic Chimu culture. In 1990 the site museum opened with a collection of 12,800 pieces and an exhibition area of 582 square meters. The collection includes bones and ceramics, textiles, stones, metal, and wooden objects. The exhibition space and museum script had not been modified in thirteen years. The project consisted in renovating the exhibition space, preparing a new set-up and illumination design, rewriting the script (in English and Spanish), conserving the pieces to be exhibited, and replacing the showcases and informative panels.

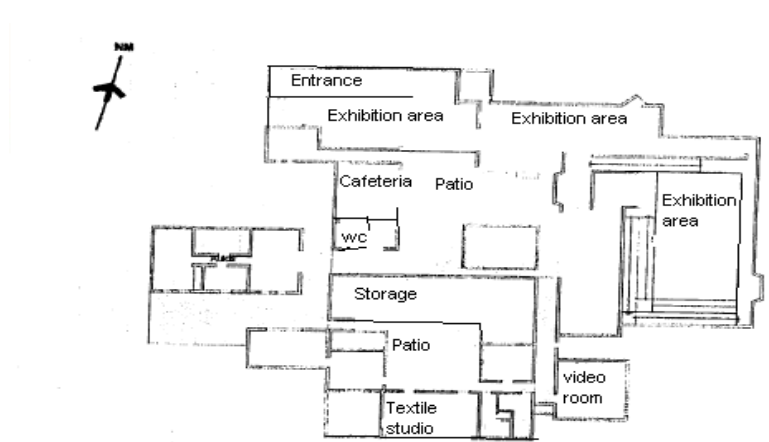
TOTAL: US\$20,041



Chan Chan site museum entrance.



Images of Chan Chan archaeological site.



CHAN CHAN SITE MUSEUM

Map floor of the Chan Chan site museum