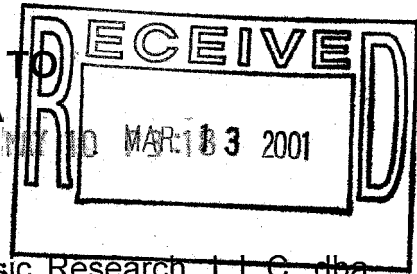


NOTIFICATION PURSUANT TO
SECTION 6 OF DSHEA
AND 21 CFR § 101.93



This notification is being filed on behalf of Basic Research, L.L.C. dba Silver Sage that is the Distributor of the product(s) which bear the statements identified in this notification. Its business address is: 402 West 5050 North, Provo, Utah 84604. This notification is being made pursuant to Section 6 of DSHEA and Rule 21 C.F.R. § 101.93. The dietary supplement product on whose label or labeling the statements appear is **Rapid Weight Loss System™ - 45 ct. Box.**

The text of each structure-function statement for which notification is now being given is:

- (Statement 1): "Rapid Weight Loss Easy 3-step system"
- (Statement 2): "Step 1 - The primary weight control compound"
- (Statement 3): ""JumpStart" any weight loss program"
- (Statement 4): "Step 2 and Step 3 - Two adjunct support formulations that make diet failure virtually impossible"
- (Statement 5): "Lipolytics Plus® - Insures proper support for the elimination of deep excess stored fat"
- (Statement 6): "Metabolics Plus® - Insures proper support for the production of lean, fat-free muscle mass"
- (Statement 7): "QuickStart - Clinically proven fat burner"
- (Statement 8): "Weight loss "six times greater for the active group as compared to the placebo group"
- (Statement 9): "Finally, there's a clinically proven fast-acting weight loss product, protected, by a United States Patent and specifically developed to "jump start" any weight loss program by producing a rapid significant loss of excess body weight and unsightly body fat"
- (Statement 10): "ThermoGenics Plus® Quick Start Formulated for: Rapid loss of excess body fat"
- (Statement 11): "ThermoGenics Plus@ Quick Start Formulated for: Rapid increase in energy levels while dieting"
- (Statement 12): "ThermoGenics Plus@ Quick Start Formulated for: Rapid rise in metabolic rate"
- (Statement 13): "An adjunct weight control compound"
- (Statement 14): "Lipolytic synergist"
- (Statement 15): "Lipolytics Plus® Formulated to: Optimize elimination of deep excess stored fat"
- (Statement 16): "Lipolytics Plus® Formulated to: Overcome the drop off in fat reduction that occurs as a result of insufficient lipolytic nutrients"

975 0162 LET 7460

- (Statement 17): "Metabolics Plus[®] Metabolic optimizer"
 (Statement 18): "Metabolics Plus* Formulated to: Maximize caloric usage"
 (Statement 19): "Metabolics Plus[®] Formulated to: Optimize production of lean muscle mass"
 (Statement 20): "Metabolics Plus[®] Formulated to: Minimize fatigue"
 (Statement 21): "Quick Start[™] was specifically formulated to produce a rapid "initial" loss of excess body weight and body fat"
 (Statement 22): ""Quick Start[™]" Rapid Weight Loss System[™] may be the perfect weight control formula for you!"

The following summary identifies the dietary ingredient(s) or supplement(s) for which a statement has been made:

<u>Statement Number</u>	<u>Identity of Dietary Ingredient(s) or Supplement(s) that is the Subject of the Statement:</u>
1	Rapid Weight Loss System [™] - 45 ct. Box
2	Rapid Weight Loss System [™] - 45 ct. Box
3	Rapid Weight Loss System [™] - 45 ct. Box
4	Rapid Weight Loss System [™] - 45 ct. Box
5	Rapid Weight Loss System [™] - 45 ct. Box
6	Rapid Weight Loss System [™] - 45 ct. Box
7	Rapid Weight Loss System [™] - 45 ct. Box
8	Rapid Weight Loss System [™] - 45 ct. Box
9	Rapid Weight Loss System [™] - 45 ct. Box
10	Rapid Weight Loss System [™] - 45 ct. Box
11	Rapid Weight Loss System [™] - 45 ct. Box
12	Rapid Weight Loss System [™] - 45 ct. Box
13	Rapid Weight Loss System [™] - 45 ct. Box
14	Rapid Weight Loss System [™] - 45 ct. Box
15	Rapid Weight Loss System [™] - 45 ct. Box
16	Rapid Weight Loss System [™] - 45 ct. Box
17	Rapid Weight Loss System [™] - 45 ct. Box
18	Rapid Weight Loss System [™] - 45 ct. Box
19	Rapid Weight Loss System [™] - 45 ct. Box
20	Rapid Weight Loss System [™] - 45 ct. Box
21	Rapid Weight Loss System [™] - 45 ct. Box
22	Rapid Weight Loss System [™] - 45 ct. Box

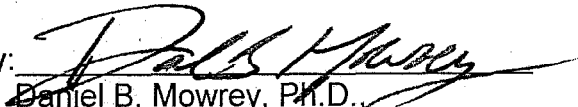
The following identifies the brand name of each supplement for which a statement is made:

<u>Statement Number</u>	<u>Brand Name</u>	<u>Label or Labeling?</u>
1	Basic Research, L.L.C., dba Silver Sage	both
2	Basic Research, L.L.C., dba Silver Sage	both
3	Basic Research, L.L.C., dba Silver Sage	both
4	Basic Research, L.L.C., dba Silver Sage	both
5	Basic Research, L.L.C., dba Silver Sage	both
6	Basic Research, L.L.C., dba Silver Sage	both
7	Basic Research, L.L.C., dba Silver Sage	both
8	Basic Research, L.L.C., dba Silver Sage	both
9	Basic Research, L.L.C., dba Silver Sage	both
10	Basic Research, L.L.C., dba Silver Sage	both
11	Basic Research, L.L.C., dba Silver Sage	both
12	Basic Research, L.L.C., dba Silver Sage	both
13	Basic Research, L.L.C., dba Silver Sage	both
14	Basic Research, L.L.C., dba Silver Sage	both
15	Basic Research, L.L.C., dba Silver Sage	both
16	Basic Research, L.L.C., dba Silver Sage	both
17	Basic Research, L.L.C., dba Silver Sage	both
18	Basic Research, L.L.C., dba Silver Sage	both
19	Basic Research, L.L.C., dba Silver Sage	both
20	Basic Research, L.L.C., dba Silver Sage	both

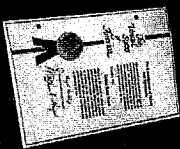
21	Basic Research, L.L.C., dba Silver Sage	both
22	Basic Research, L.L.C., dba Silver Sage	both

I, Daniel B. Mowrey, Ph.D., am authorized to certify this Notification on behalf of Basic Research, L.L.C. dba Silver Sage. I certify that the information presented and contained in this Notification is complete and accurate, and that Basic Research, L.L.C. dba Silver Sage has substantiation that each structure-function statement is truthful and not misleading.

Dated this 6 day of March, 2001.

By: 
Daniel B. Mowrey, Ph.D.
Consultant to Basic Research, L.L.C.
dba Silver Sage

WARNING: Unlike most "popular" weight control products currently on the market, the powerful "Quick Start™" weight loss formula is not intended for long-term or extended use. "Quick Start™" was specifically formulated to produce a rapid "initial" loss of excess body weight and body fat.* Use of "Quick Start™" should be limited to 6 continuous weeks (no more than 12 weeks total) after incredible, eye-catching success, you can continue losing weight with any diet product or program. Of course we at Silver Sage recommend ThermoGenics Plus® Original long-term formula.



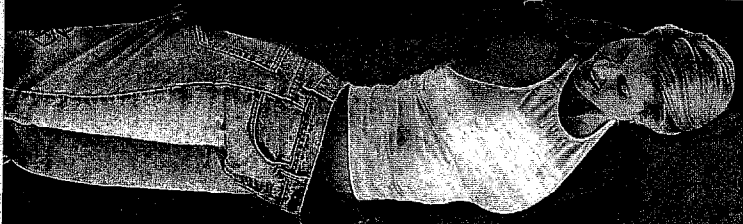
PATENTED

Take the "Quick Start™" Rapid Weight Loss System™ Test

- Do you want fast visible results everyone can notice?
- Did your last diet program fizzle before it got started?
- Struggling with your diet for the last month but no one noticed any results (not even you)?
- Ready to be a winner?

▶ If you answered "yes" to any one of these questions, then the "Quick Start™" Rapid Weight Loss System™ may be the perfect weight control formula for you!*

Before starting this or any weight control program check with your health care provider to make sure you are in overall good health, if your health care provider has any questions please have him or her call 1-800-898-5153



RAPID WEIGHT LOSS

Easy-3-Step System*

NEW!

SAVE \$20

Compared to Purchasing Separately

Step 1 PRIMARY

ThermoGenics Plus Quick Start

Step 2 and Step 3

ADJUNCT

Lipolytics Plus Metabolics Plus

Dietary Supplement

Clinically Proven, Patent Protected, and Guaranteed to Work for You Or Your Money Back... (No Questions Asked!)



45

Fast Acting!

QUICK START™
CLINICALLY PROVEN
FAT BURNER*
WITH ADRENAL SUPPORT

Weight loss "six times greater for the active group as compared to the sedentary placebo group."*



FINALLY

Remove This Section for Convenient Dispensing!

Directions for Use:
 One serving consists of one packet, to be taken three times per day, morning, noon & early evening.

The Supplement Facts box for three products are listed separately.

Serving Size 2 capsules
 Thermogenics Plus™ Quick Start™
 Serving Size 2 capsules
 Lipolytics Plus™ (Yellow) – for
 Serving Size 2 capsules (purple) – for
 Metabolics Plus™

Remove This Section for Convenient Dispensing!

Thermobionics PLUS QUICK START™

Formulated For:

Step 1

Active ingredients: Ephedra, Caffeine, Acetylsalicylic Acid

Supplement Facts

Serving Size 2 capsules
 Servings Per Container 45

Amount Per % Daily Value*

Vitamin E	20mg	33%
Pantoic Acid	11.5mg	115%
Zinc (amino acid chelate)	7mg	47%
Manganese (amino acid chelate)	84mcg	120%
Potassium (chelate)	33mg	>1%
Choline bitartrate	47.3mg	
inositol	33.3mg	
L-Methionine	22.2mg	
L-Carnitine (Fumarate)	22.2mg	
Beta Sitosterol	22.2mg	
Ginger (root)	33.3mg	
Dandelion (root)	16.7mg	
Barberry (root)	16.7mg	
Turmeric (rhizome)	16.7mg	
Milk Thistle (seed)	16.7mg	
Cinnamon (bark)	16.7mg	
Siberian Ginseng (root)	11.1mg	
Gotu Kola (leaf)	11.1mg	
F-11 (root)	5.5mg	
Cayenne Pepper (fruit)	66.7mcg	
Boron (chelated)	16.7mcg	
Vanadium (chelated)	16.7mcg	
Digezyme™**	66.7mg	

*Percent Daily Values are based on a 2,000 calorie diet.
 † Daily Value not established

Other ingredients: rice flour

Lipolytics PLUS LIPOLYTIC SYNERGIST™

Formulated for:

Step 2

Active ingredients: Ephedra, Caffeine, Acetylsalicylic Acid

Supplement Facts

Serving Size 2 capsules
 Servings Per Container 45

Amount Per % Daily Value*

Vitamin B12 (Cyanocobalamin)	14mcg	700%
Vitamin B6 (Pyridoxine HCL)	1mg	700%
Vitamin B12 (Cyanocobalamin)	5mcg	150%
Vitamin B6 (Pyridoxine HCL)	14mcg	700%
Siberian Ginseng (root)	89mg	
Bee Pollen	89mg	
Panax Ginseng (root)	44.4mg	
Suma (root)	44.4mg	
Schizandra (fruit)	44.4mg	
Choleila (whole plant)	44.4mg	
Gymnema Sylvestre (leaf)	44.4mg	
American Ginseng (root)	22.2mg	
Chromium Polynicotinate	89mcg	
L-Glutamine	44.4mg	
L-Tyrosine	44.4mg	
L-Taurine	44.4mg	
PABA	22.2mg	
DMAE	44.4mg	

*Percent Daily Values are based on a 2,000 calorie diet.
 † Daily Value not established

Other ingredients: rice flour

Metabolics PLUS METABOLIC OPTIMIZER*

Formulated to:

- Maximize Caloric Usage*
- Optimize Production of Lean Muscle Mass*
- Minimize Fatigue*

Step 3

Active ingredients: Ephedra, Caffeine, Acetylsalicylic Acid

Supplement Facts

Serving Size 2 capsules
 Servings Per Container 45

Amount Per % Daily Value*

Vitamin B12 (Cyanocobalamin)	14mcg	700%
Vitamin B6 (Pyridoxine HCL)	1mg	700%
Vitamin B12 (Cyanocobalamin)	5mcg	150%
Vitamin B6 (Pyridoxine HCL)	14mcg	700%
Siberian Ginseng (root)	89mg	
Bee Pollen	89mg	
Panax Ginseng (root)	44.4mg	
Suma (root)	44.4mg	
Schizandra (fruit)	44.4mg	
Choleila (whole plant)	44.4mg	
Gymnema Sylvestre (leaf)	44.4mg	
American Ginseng (root)	22.2mg	
Chromium Polynicotinate	89mcg	
L-Glutamine	44.4mg	
L-Tyrosine	44.4mg	
L-Taurine	44.4mg	
PABA	22.2mg	
DMAE	44.4mg	

*Percent Daily Values are based on a 2,000 calorie diet.
 † Daily Value not established

Other ingredients: rice flour

**Digezyme™ is manufactured by Sabinsa and has lipolytic activity of not less than 100 IU/g. Lipolytic Mineral Blend™ consists of all of the above chelated minerals.
 †FoodRx, LLC = International units per gram

If you experience adverse effects after consumption of this product and you live in Texas, you can call the Texas Department of Health. If you live outside of Texas, call your local Poison Control Center, or, if an emergency call 911.
 For any other product information, call customer service at 1-800-898-5153.
WARNING: Do not take this product with any other product containing Ephedrine, Ephedra, or Ma Huang.
 For Ohio residents: **WARNING:** Maximum recommended total amount of ephedrine for a healthy adult human is no more than 100mg in a 24 hour period for not more than 12 weeks. Improper use may be hazardous to a person's health.
***These statements have not been reviewed by the Food and Drug Administration. These products are not intended to diagnose, treat, cure, or prevent any disease.**