

RNAV (GPS) RWY 16

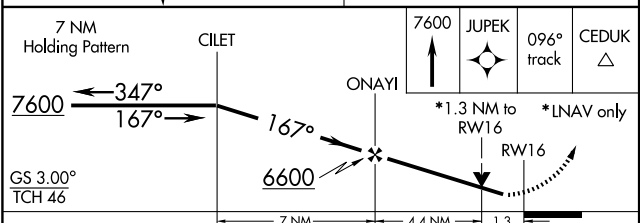
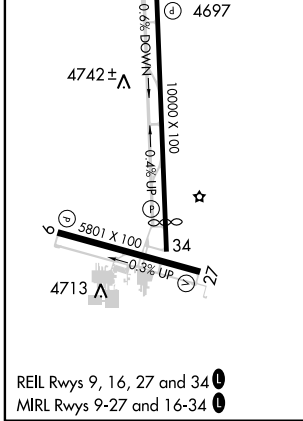
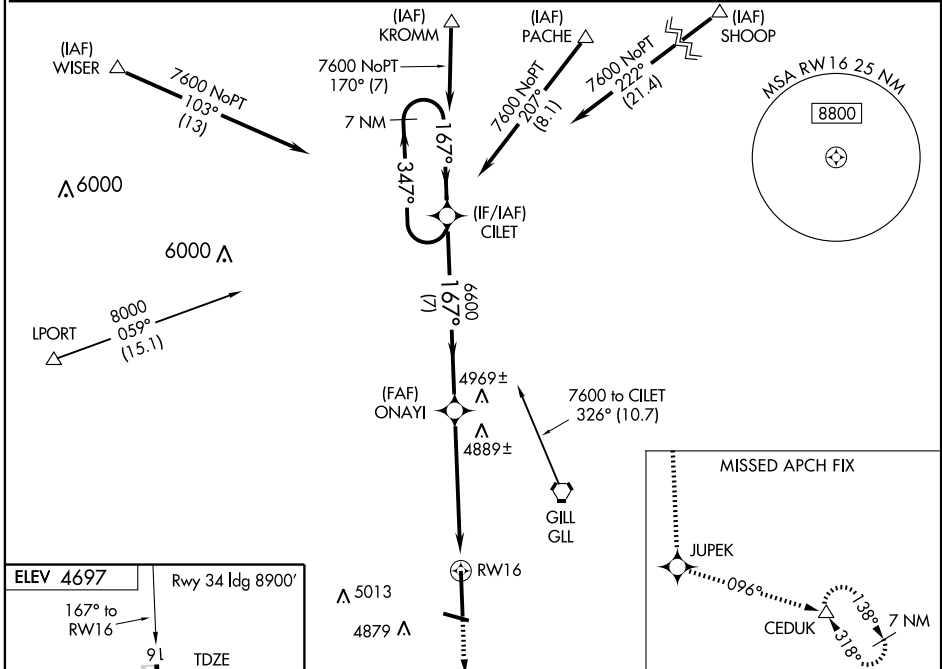
GREELEY-WELD COUNTY (GXY)

| | | |
|--|------------------------|--|
| WAAS CH 72708 W16A | APP CRS 167° | Rwy ldg 10000 TDZE 4697 Apt Elev 4697 |
|--|------------------------|--|

⚠ For uncompensated Baro-VNAV systems, LNAV/VNAV NA below -24°C (-11°F) or above 39°C (102°F).
⚠ DME/DME RNP-0.3 NA. Visibility reduction by helicopters NA.
 VDP and Baro-VNAV NA when using Fort Collins-Loveland Muni altimeter setting.
 When local altimeter setting not received, use Fort Collins-Loveland Muni altimeter setting and increase LPV DA to 5063 feet and visibility all Cats ¼ mile. Increase LNAV/VNAV DA to 5207 and visibility all Cats ¼ mile. Increase all MDA 100 feet and LNAV visibility Cats C and D ¼ mile. Increase Circling visibility Cat C ¼ mile.

MISSED APPROACH: Climb to 7600 direct JUPEK and via 096° track to CEDUK and hold.

| | | | |
|--------------------------|---|---------------------------|--|
| AWOS-3 135.175 | DENVER APP CON 134.85 251.125 | CLNC DEL 126.65 | UNICOM 122.8 (CTAF) 0 |
|--------------------------|---|---------------------------|--|



| CATEGORY | A | B | C | D |
|--------------|-----------------------|-----------------------|-------------------------|-------------------------|
| LPV DA | | 4978-1 | 281 (300-1) | |
| LNAV/VNAV DA | | 5122-1½ | 425 (500-1½) | |
| LNAV MDA | 5140-1 | 443 (500-1) | 5140-1¼ 443 (500-1¼) | 5140-1½ 443 (500-1½) |
| CIRCLING | 5140-1 443 (500-1) | 5160-1 463 (500-1) | 5200-1½ 503 (600-1½) | 5260-2 563 (600-2) |

SW-1, 31 JUL 2008 to 28 AUG 2008

SW-1, 31 JUL 2008 to 28 AUG 2008