

## APPENDIX F. REDUCED SET OF FURNACE MODELS DATABASE

### TABLE OF CONTENTS

F.1	PURPOSE .....	F-1
F.2	DATABASE DEVELOPMENT .....	F-1
F.2.1	Background .....	F-1
F.2.2	Database Structure .....	F-1

### LIST OF TABLES

Table F.2.1	Furnace Data Table Field Names and Definitions .....	F-5
Table F.2.2	Pressure Table Field Names and Definitions .....	F-6
Table F.2.3	Power Table Field Names and Definitions .....	F-7
Table F.2.4	Series Table Field Names and Definitions .....	F-7
Table F.2.5	Delay Times Table Field Names and Definitions .....	F-7

### LIST OF FIGURES

Figure F.2.1	Map Showing Relationship Between the Furnace Data Table, Pressure Table, and Power Table .....	F-3
Figure F.2.2	Map Showing Relationship Between the Furnace Data Table, Series Table, and Delay Times Table .....	F-3
Figure F.2.3	Map Showing Relationship Between the GAMA Directory March 2005 Table Model Translation Table, and the Furnace Data Table .....	F-4
Figure F.2.4	Map Showing Relationship Between the Series Table, References Table, and Bibliographies Table .....	F-4

## APPENDIX F. REDUCED SET OF FURNACE MODELS DATABASE

### F.1 PURPOSE

The Reduced Set of Furnace Models Database was developed to identify actual unique furnace models which represent units with different design characteristics and to expand the Gas Appliance Manufacturers Association (GAMA) directory data for each unique furnace model by adding information provided in the manufacturers' product literature. One application of the database was to develop virtual models for the sizes of residential furnaces which were used in the life-cycle cost (LCC) analysis.

The March 2005 GAMA Directory<sup>1</sup> lists more than 6,833 non-weatherized gas furnace models. Many models represent essentially identical units which differ only in brand name. The LCC analysis uses virtual furnace models to represent characteristics of typical furnaces. The database of furnace models described here (referred to as the reduced set of furnace models or simply the reduced set) represents non-repetitive furnace models only. After examining the GAMA Directory database, the Department determined that about 1,369 models may be considered sufficiently different to be listed as unique models.

Once the reduced set was identified, the Department examined the manufacturer's product literature and added additional data including the airflow at different static pressures, power for the blower, blower motor type, blower wheel dimensions, furnace dimensions, low fire heating input and output capacity for modulating furnaces, and delay times. 2, 3, 4, 5, 6, 7, 8, 9, 10, 11, 12, 13, 14, 15, 16, 17, 18, 19, 20, 21, 22, 23, 24, 25, 26, 27, 28, 29, 30, 31, 32, 33, 34, 35, 36, 37, 38, 39, 40, 41, 42, 43, 44, 45, 46, 47, 48, 49, 50, 51, 52, 53, 54, 55, 56, 57, 58, 59, 60, 61, 62, 63, 64, 65, 66, 67, 68, 69, 70, 71, 72, 73, 74, 75, 76, 77, 78, 79, 80, 81, 82, 83, 84, 85, 86, 87, 88, 89, 90, 91, 92, 93, 94, 95, 96, 97, 98, 99, 100, 101, 102, 103, 104, 105, 106, 107, 108, 109, 110, 111, 112, 113, 114, 115, 116, 117, 118, 119, 120, 121, 122, 123, 124, 125, 126, 127, 128, 129, 130, 131, 132, 133, 134, 135, 136, 137, 138, 139, 140, 141, 142, 143, 144, 145, 146, 147, 148, 149, 150, 151, 152, 153, 154, 155, 156, 157, 158, 159, 160, 161, 162, 163, 164, 165, 166, 167, 168, 169, 170, 171, 172, 173, 174, 175, 176, 177, 178, 179

For a detailed listing of the fields in the database, see Tables F.1.1 to F.1.4.

### F.2 DATABASE DEVELOPMENT

#### F.2.1 Background

In 2002, DOE began to develop a database of product specifications (such as different design characteristics) for residential furnaces currently sold in the U.S. A preliminary version of the reduced set database was completed at the end of 2002 and released with the ANOPR.<sup>180</sup> Subsequent changes were made to include data from manufacturers' literature.

## F.2.2 Database Structure

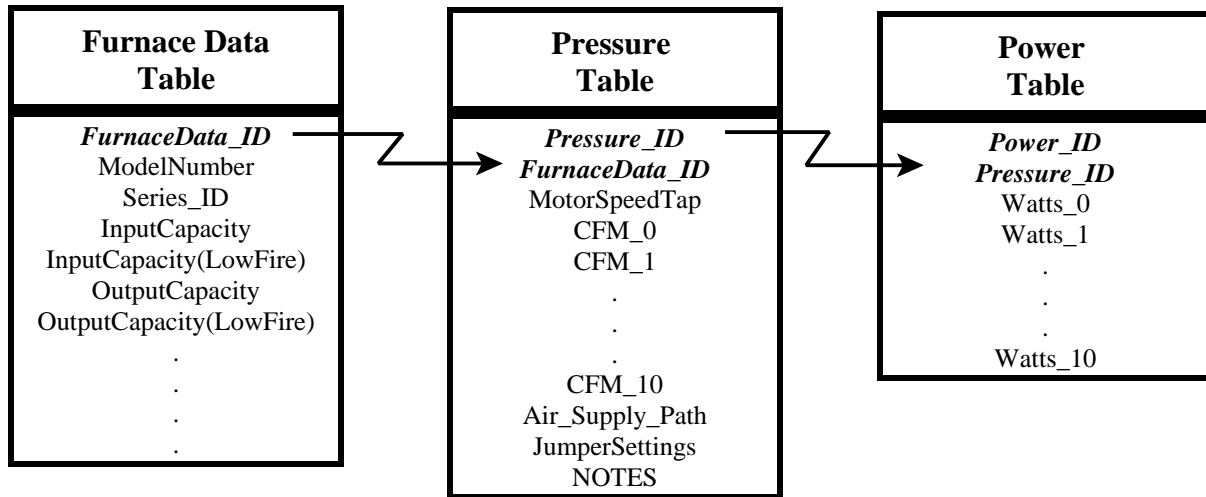
The Reduced Set of Furnace Models Database was developed using the Microsoft Access relational database application. A relational database provides the user with the means of sorting and extracting information from its tables through the use of queries; queries help isolate and view particular items of interest and can be used to create displays. In this database, for example, gas furnaces models that are condensing, have two-stage modulation, with a certain input capacity range, and that use electronically commutated motor (ECM) blower motors can be identified. There are four principal data tables in the database as described below. Figures F.1.1 and F.1.2 demonstrate the relationships between the tables. Tables F.2.1 through F.2.4 provide a list of the variable names and definitions used in the database tables.

The *Furnace Data Table* contains furnace information such as input capacity, output capacity, AFUE, blower motor type, and blower dimensions gathered from the GAMA directory database and manufacturers' product literature. The manufacturer name, brand names, and series names are included by linking to the *Series Table*. The field *Series\_ID* is included in the *Furnace Data Table* to serve as a linking variable to the *Series Table* (see Figure F.2.2). The *Model Translation Table* provides a link between data in the *Furnace Data Table* and the *GAMA Directory April 2002 Table* (see Figure F.2.3).

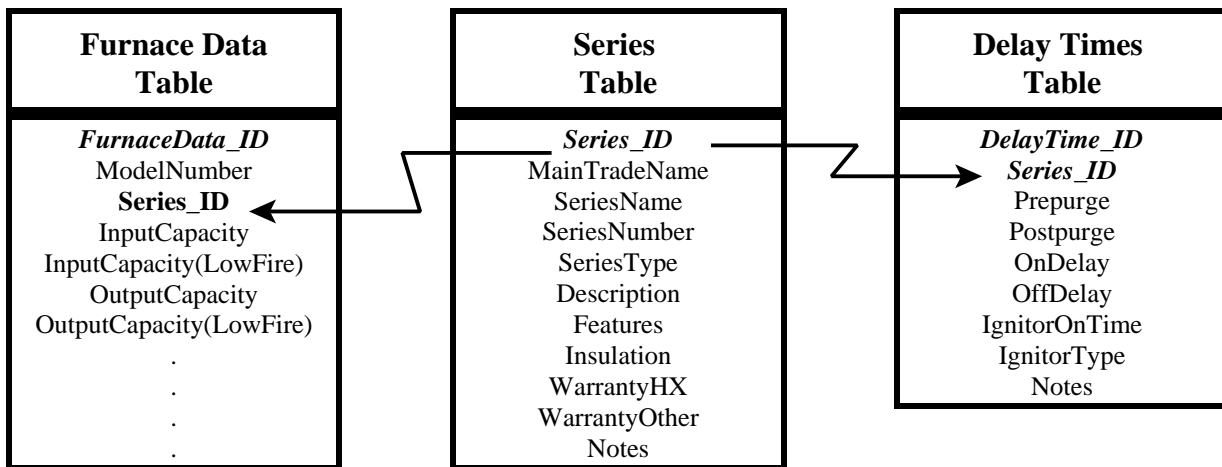
The *Pressure Table* contains information on airflow (cfm) at different static pressures (in.w.g.) for different blower motor speeds. The field *FurnaceData\_ID* is also included in this table; it is the linking variable between the *Furnace Data Table* and the *Pressure Table* (see Figure F.2.1).

The *Power Table* contains information on power consumption (in watts) for the furnace blower motor at different static pressures (in.w.g.) for different blower motor speeds. The *Pressure\_ID* is also included in the *Power Table*; it is the linking variable between the *Pressure Table* and the *Power Table* (see Figure F.2.1). Power consumption for the furnace blower motor was not provided in the manufacturers literature for all models.

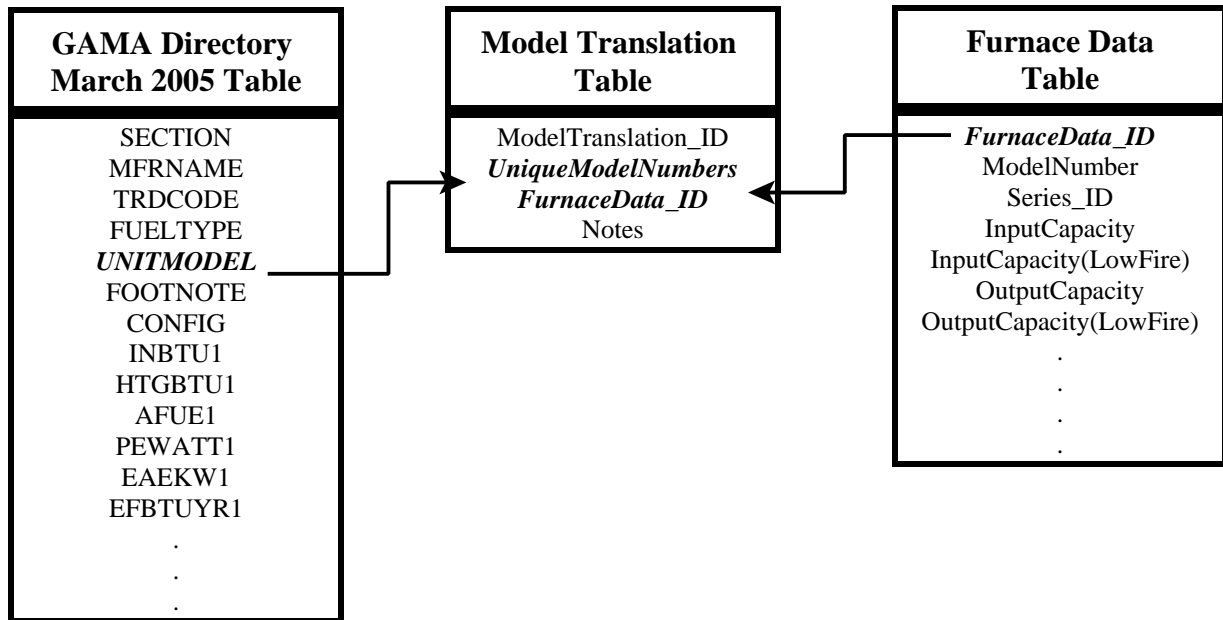
The *Series Table* contains information related to a series of furnaces including manufacturer, related brands, warranty information, etc. This table also links to the *Delay Times Table*, which includes pre-purge, post-purge, on-delay, off-delay, and ignitor on-time information (see Figure F.1.2). In addition, the *References Table* provides a link between the *Series Table* and the *Bibliographies Table*, which has all the product literature bibliographies (see Figure F.2.4).



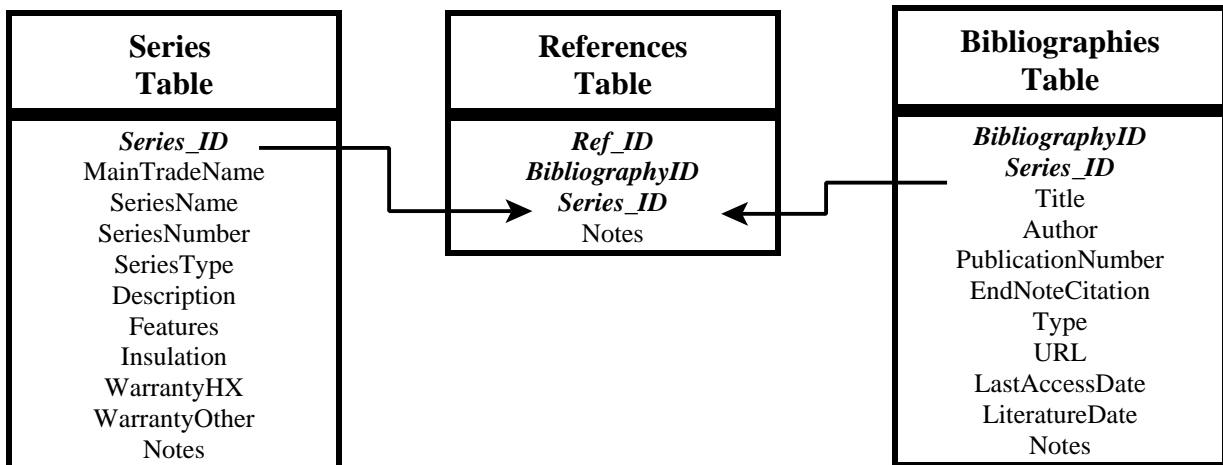
**Figure F.2.1 Map Showing Relationship Between the Furnace Data Table, Pressure Table, and Power Table**



**Figure F.2.2 Map Showing Relationship Between the Furnace Data Table, Series Table, and Delay Times Table**



**Figure F.2.3 Map Showing Relationship Between the GAMA Directory March 2005 Table Model Translation Table, and the Furnace Data Table**



**Figure F.2.4 Map Showing Relationship Between the Series Table, References Table, and Bibliographies Table**

**Table F.2.1 Furnace Data Table Field Names and Definitions**

<b>Field Name</b>	<b>Field Definitions</b>
<i>Furnace_ID</i>	Unique identification number for each record
ModelNumber	Actual Model Number from GAMA database
<i>Series_ID</i>	Connects the individual model with the Series Table
InputCapacity	Input Capacity as reported by GAMA database
InputCapacity(LowFire)	Input Capacity during low fire for Two-Stage or modulating furnaces
OutputCapacity	Output Capacity as reported by GAMA database
OutputCapacity(LowFire)	Output Capacity during low fire for Two-Stage or modulating furnaces
AFUE	Annual Fuel Utilization Efficiency (AFUE) as reported by GAMA database
PE	PE value in watts as reported by GAMA database
EAE	Eae value in kilowatt hours/year as reported by GAMA database
EF	EF value in BTU/year as reported by GAMA database
AC_Tons(Max)	Reported maximum number of nominal Tons of AC handled by Furnace
AC_Tons(Min)	Reported minimum number of nominal Tons of AC handled by Furnace
TempMax(HighFire)	Temperature range maximum value reported during High Fire Heating
TempMax(LowFire)	Temperature range maximum value reported during Low Fire Heating (Two-Stage/mod. furnaces)
TempMin(HighFire)	Temperature range minimum value reported during High Fire Heating
TempMin(LowFire)	Temperature range minimum value reported during Low Fire Heating (Two-Stage/mod. furnaces)
BlowerMotorType	Indoor Blower motor type (either PSC, ECM, or Shaded Pole)
BlowerMotorDriveType	Indoor Blower motor type (either Direct Drive or Belt Driven)
BlowerMotor_HP	Indoor Blower motor horsepower (nominal)
BlowerMotorSpeedTaps	Number of speeds of indoor blower (1, 2, 3, 4, 5 or variable)
BlowerWheelSize	Blower Wheel Diameter [in] & Width [in]
BlowerMotorNotes	Indoor Blower notes
CoolingBlowerTap	Indoor Blower Tap default factory setting for Cooling
HighFireBlowerTap	Indoor Blower Tap default factory setting for High Fire Heating
LowFireBlowerTap	Indoor Blower Tap default factory setting for Low Fire Heating (for Two-Stage or mod. furnaces)
AirFilter	CFM Tested with filter (YES/NO field)
AirflowNotes	Notes regarding AirFlow data
InducerMotorType	Draft inducer blower motor type
InducerMotorSpeedTaps	Draft inducer blower motor speed taps (1, 2, 3, 4, 5 or variable)
InducerNotes	Draft inducer blower notes
SupplyAir_OutletDepth	Supply Air Outlet dimensions (depth) [in]
SupplyAir_OutletWidth	Supply Air Outlet dimensions (width) [in]
HeatExchanger(Primary)	Heat Exchanger Type (Tubular, Clam Shell, Serpentine)
HeatExchanger(Secondary)	Secondary Heat Exchanger Type for condensing furnaces
HeatExchangerNotes	Notes for Heat Exchanger
Burners	Number of Burners

**Table F.2.1 Furnace Data Table Field Names and Definitions (continued)**

Field Name	Field Definitions
Configuration	Configuration of Furnace (Upflow, Downflow, Horizontal)
FurnaceHeight	Height of Furnace [in]
FurnaceWidth	Width of Furnace [in]
FurnaceDepth	Depth of Furnace [in]
FurnaceWeight	Weight of Furnace [lbs]
NOx_Model	Model meets California Air Quality Management District NOx emissions requirements
FuelType	G = Gas, L = Propane. O = Oil (from GAMA database)
FurnaceType	Either Weatherized (W) or Non-Weatherized (N) from GAMA database
1_ElectronicIgnition	GAMA standard footnote 1: Electronic Ignition
2_Electro_MechVent	GAMA standard footnote 2: Electro-Mechanical Vent Damper(s) specified by the Furnace Mfr.
3_PowerVent	GAMA standard footnote 3: Power Combustion or Power Vent
4_Condensing	GAMA standard footnote 4: Condensing Type
5_DirectVent	GAMA standard footnote 5: Direct Vent (Includes Venting and Combustion Air Systems).
6_Packaged	GAMA standard footnote 6: Single Package unit (Combination Heating/Cooling).
Modulation	Type of modulation: (Single Stage, Two-Stage, Continuous Modulating)
VentingFootnotes	GAMA non-standard footnote: May be installed as Direct Vent, Non-direct vent, etc...
ManufacturedHome	GAMA non-standard footnote: Manufactured Housing Only or Manufactured (mobile) home approved with accessory kit.
BlowerMotorFootnotes	GAMA non-standard footnote: Variable Speed Motor
HighAltitudeDerated	If model input was derated for high altitude (YES/NO)
SEER	SEER value (for packaged units)
DateAdded	Date Added to GAMA Directory (Default Date is set to Apr-02)
DateDiscontinued	Date marked discontinued or deleted from GAMA Directory (Earliest date is Apr-02)
Notes	notes related to individual model

**Table F.2.2 Pressure Table Field Names and Definitions**

Field Name	Field Definitions
<i>Pressure_ID</i>	Unique identification number for each record
<i>FurnaceData_ID</i>	Connects to the Furnace Data Table
MotorSpeedTap	Name of the Speed Tap
CFM_0 to CFM_10	10 Field Names CFM_# which represent Airflow (CFM) @ 0.0 in w.g. through 1.0 in w.g. static pressure
Air_Supply_Path	Configuration of the return air supply, e.g. single-side, two-sides, bottom, etc
JumperSettings	Jumper Settings
Notes	Notes

**Table F.2.3 Power Table Field Names and Definitions**

Field Name	Field Definitions
<i>Power_ID</i>	Unique identification number for each record
<i>Pressure_ID</i>	Connects to the Pressure Table
Watts_0 to Watts_10	10 Field Names Watts_# which represent Watts @ 0.0 in w.g. through 1.0 in w.g. static pressure
Notes	Notes

**Table F.2.4 Series Table Field Names and Definitions**

Field Name	Field Definitions
<i>Series_ID</i>	Unique identification number for each record
MainTradeName	Main Trade Name Associated with Series.
Series Name	Name of the Series
Series Number	Number of the Series
Series Type	Product Category (Baseline, Deluxe, Premium)
Description	Description of the series from manufacturer literature
Features	Features
Insulation	Insulation used - type, amount, or yes/no
WarrantyHX	Warranty Information for the Heat Exchanger
WarrantyOther	Warranty Information for other furnace parts
Notes	Notes

**Table F.2.5 Delay Times Table Field Names and Definitions**

Field Name	Field Definitions
<i>DelayTime_ID</i>	Unique identification number for each record
<i>Series_ID</i>	Connects to the Series Table
Prepurge	draft inducer pre-purge time period (in seconds)
Postpurge	tp: draft inducer post-purge time period (in seconds)
OnDelay	t+: delay time between burner startup and the blower or pump startup (in seconds)
OffDelay	t-: delay time between burner shutoff and the blower or pump shutoff (in seconds)
IgnitorOnTime	Ignitor On-Time: Length of time the hot surface ignitor is on before gas is sent to the burner.
IgnitionType	Ignition Type
Notes	Notes



## REFERENCES

1. Gas Appliance Manufacturers Association (GAMA), *GAMA Directory March 2005*, 2005. (Last accessed March, 2005.)  
<<<http://www.gamanet.org/gama/inforesources.nsf/vAllDocs/Product+Directories?OpenDocument>>>
2. Carrier Co., *58STA/58STX, Induced-Combustion, 4-Way Multipoise Furnace*, 2005. Carrier Co. Catalog No: 535-80127, Form 58ST-12SI.
3. Carrier Co., *58STA/STX, 4-Way Multipoise Induced-Combustion Gas Furnace; Input Capacities: 45,000 thru 155,000 Btuh*, 2004. Carrier Co. Catalog No. 525-80045, Form 58ST-4PD.
4. Carrier Corporation, *58CTA/CTX (Two-Stage PSC)*, 2002. Carrier Corporation. Indianapolis, IN.
5. Carrier Co., *58CTA/CTX, Performance 80, Two-Stage 4-Way Multipoise, Induced-Combustion Furnace, Input Capacities: 45,000 thru 155,000 Btuh*, 2004. Carrier Co. Form 58CT-3PD, Catalog No. 525-80042.
6. Carrier Co., *58CTA/58CTX, 2 Stage Deluxe Induced-Combustion, 4-Way Multipoise Furnace*, 2005. Carrier Co. Catalog No: 535-80124, Form No. 58CT-5SI.
7. Carrier Co., *58MCA, 4-Way Multipoise Fixed-Capacity, Direct-Vent Condensing Gas Furnace*, 2004. Carrier Co. Catalog No. 535-80139, Form 58MCA-10SM.
8. Carrier Co., *58MCA, 4-Way Multipoise Fixed-Capacity Direct-Vent Condensing Gas Furnace*, 2005. Carrier Co. Catalog No. 535-80158, Form 58MCA-16SI.
9. Carrier Co., *58MCA, 4-Way Multipoise, Fixed-Capacity Direct-Vent, Condensing Gas Furnace, Input Capacities: 40,000 thru 138,000 Btuh*, 2003. Carrier Co. Catalog No. 525-80031, Form 58MCA-12PD.
10. Carrier Co., *58MSA, 4-Way Multipoise, Fixed-Capacity Condensing Gas Furnace; Input Capacities: 40,000 thru 120,000 Btuh*, 2003. Carrier Co. Catalog No. 525-80032, Form 58MSA-5PD.
11. Carrier Co., *58MSA, 4-Way Multipoise Fixed-Capacity, Condensing Gas Furnace*, 2004. Carrier Co. Catalog No. 535-80132, Form 58MSA-7SM.
12. Carrier Co., *58MSA, 4-Way Multipoise Fixed-Capacity Condensing Gas Furnace*, 2005. Carrier Co. Catalog No. 535-80154, Form 58MSA-11SI.

13. Carrier Co., *58MTA, Deluxe 4-Way Multipoise 2-Stage Direct Vent Condensing Gas Furnace*, 2005. Carrier Co. Catalog No. 535-80155, Form 58MTA-8SI.
14. Carrier Co., *58MXA, Deluxe 4-Way Multipoise Fixed-Capacity, Direct Vent Condensing Gas Furnace*, 2005. Carrier Co. Catalog No. 535-80157, Form 58MXA-18SI.
15. Carrier Co., *58MTA, Deluxe 4-Way Multipoise 2-Stage Direct-Vent Condensing Gas Furnace*, 2004. Carrier Co. Catalog No. 535-80140, Form 58MTA-5SM.
16. Carrier Co., *58MXA, 4-Way Multipoise Fixed-Capacity Direct-Vent Condensing Gas Furnace*, 2004. Carrier Co. Catalog No. 535-80142, Form 58MXA-10SM.
17. Carrier Co., *Performance™ 93 Model 58MTA, Highly-Efficient 4-Way Multipoise Two-Stage Direct-Vent Deluxe Condensing Gas Furnace; Input Capacities: 60,000 thru 120,000 Btuh*, 2003. Carrier Co. Catalog No. 525-80033, Form 58MTA-3PD.
18. Carrier Co., *Comfort™ 92, Model 58MXA, Highly-Efficient 4-Way Multipoise Fixed-Capacity Direct-Vent Deluxe Condensing Gas Furnace; Input Capacities: 40,000 thru 138,000 Btuh*, 2003. Carrier Co. Catalog No. 525-80034, Form 58MXA-11PD.
19. Carrier Corporation, *58CVA/58CVX: Installation, Start-up, Operating, and Service and Maintenance Instructions*, December, 2002. Carrier Corporation. Report No. Catalog No: 535-80103.
20. Carrier Co., *58CVA/CVX, Infinity™ 80, Variable Speed, 4-Way Multipoise Furnace*, 2004. Carrier Co. Form 58CV-3PD. Catalog No. 525-80043.
21. Carrier Co., *Infinity™ 96, Model 58MVP, Deluxe 4-Way Multipoise Direct-Vent Variable-Speed Deluxe Condensing Gas Furnace, Series 170; Input Capacities: 40,000 thru 120,000 Btuh*, 2004. Carrier Co. Catalog No. 525-80038, Form 58MVP-11PD.
22. Carrier Co., *58DLA/DLX, Comfort™ 80, Deluxe 4-Way Multipoise Induced-Combustion Gas Furnace: Input Capacities: 45,000 thru 155,000 Btuh*, 2004. Carrier Co. Catalog No. 525-80044, Form 58DL-4PD.
23. Carrier Co., *58DLA/58DLX, Deluxe Induced-Combustion, 4-Way Multipoise Furnace*, 2005. Carrier Co. Catalog No: 535-80148, Form No. 58DL-5SI.
24. Armstrong Air Conditioning Inc., *G2D80BT, with Variable Speed Blower Technology*, 2004. Armstrong Air Conditioning Inc. Form # AG2D80BT-V-100 (8/04).
25. Armstrong Air Conditioning Inc., *G2D80BT 80% Enhanced Gas Furnace*, 2004. Armstrong Air Conditioning Inc. Form # AG2D80BT-100 (9/04).

26. Armstrong Air Conditioning Inc., *G1D93BU, Gas Furnace*, 2004. Armstrong Air Conditioning Inc. Form # AG1D93BU-100 (1/04).
27. Armstrong Air Conditioning Inc, *MGE - Gas\Electric, Thru-the-Wall*, 2004. Armstrong Air Conditioning Inc. Form # MGE-100 (2/04).
28. Armstrong Air Conditioning Inc, *HWC - Gas\Electric, Thru-the-Wall*, 2001. Armstrong Air Conditioning Inc. Form#HWC-100 (1/01).
29. Armstrong Air Conditioning Inc., *G1D91BU, Ultra V, Tech 91, Gas Furnace*, 2003. Armstrong Air Conditioning Inc. Form # AG1D91BU-100 (12/03).
30. Armstrong Air Conditioning Inc., *GIN80BT, Gas Furnace*, 2003. Armstrong Air Conditioning Inc. Form # AG1N80BT-100 (12/03).
31. Armstrong Air Conditioning Inc, *G1D80BT, Ultra V, Advantage 80*, 2004. Armstrong Air. Form # AG1D80BT-100 (1/04).
32. Armstrong Air Conditioning Inc, *G2D93BT, Horizontal High Efficiency Gas Furnace, Upflow/Horizontal*, 2004. Armstrong Air Conditioning Inc. Form #AG2D93BT-100 (9/04).
33. Armstrong Air Conditioning Inc, *G2D95BT, High Efficiency Gas Furnace, Upflow/Horizontal*, 2004. Armstrong Air Conditioning Inc. Form #AG2D95BT-100 (9/04).
34. Armstrong Air Conditioning Inc, *INSTALLATION INSTRUCTIONS, G1D80BT, G1D80BR, G2D80BT, & G2D80BR, 80% Gas Furnace*, Armstrong Air Conditioning Inc. # 45465J004.
35. Armstrong Air Conditioning Inc, *INSTALLATION INSTRUCTIONS, G1N80BU, G1N80BR, G1N80BT, CG80UB, CG80RB, & CG80TB, 80% Gas-Fired Furnace*, Armstrong Air Conditioning Inc. # 45464K003.
36. Armstrong Air Conditioning Inc, *INSTALLATION INSTRUCTIONS, G2D80BT 80% Gas Furnace with Variable Speed Motor*, Armstrong Air Conditioning Inc. # 46130J004.
37. Armstrong Air Conditioning Inc, *INSTALLATION INSTRUCTIONS, G2D93BT & G2D95BT, High Efficiency Multi-Position Gas Furnace*, Armstrong Air Conditioning Inc. # 47904A005.
38. Armstrong Air Conditioning Inc, *INSTALLATION INSTRUCTIONS, G2D95BU & G2D95BC, High Efficiency 95% Condensing Gas Furnace*, Armstrong Air Conditioning Inc. # 45467J004.

39. Armstrong Air Conditioning Inc, *INSTALLATION INSTRUCTIONS, HW/HWC Series "Magic-Pak" Thru-the-Wall Unit*, Armstrong Air Conditioning Inc. # 45042J099.
40. Armstrong Air Conditioning Inc, *INSTALLATION INSTRUCTIONS, MGE Series .Magic-Pak. Gas Heating with Electric Cooling Unit*, Armstrong Air Conditioning Inc. # 46977G003.
41. Armstrong Air Conditioning Inc., *INSTALLATION INSTRUCTIONS, G1D91BT, CG90TB, & G1D93BT, High Efficiency 90+ Condensing Gas Furnace*, Armstrong Air Conditioning Inc. # 47860A005.
42. Amana Heating and Air Conditioning, *DMS8/DDS8/DHS8, Distinctions™, DMS8/DDS8/DHS8 Multi-Position, Single-Stage, Multi-Speed Gas Furnace*, 2005. Amana. Form: PDB-DF80. <[www.amana-hac.com](http://www.amana-hac.com)>
43. Amana Heating and Air Conditioning, *AMS8/ADS8, Gas Furnace, Specification Sheet*, 2004. <[www.amana-hac.com](http://www.amana-hac.com)>
44. Amana Heating and Air Conditioning, *AMS9, ACS9, Sepcifications, Gas Furnace*, 2005. Amana. <[www.Amana-hac.com](http://www.Amana-hac.com)>
45. Amana Heating and Air Conditioning, *AMV8, AMV8 Multi-Position, Two-Stage, Variable-Speed Gas Furnace*, 2004. Amana. Form: PDB-AMV8. <[www.amana-hac.com](http://www.amana-hac.com)>
46. Amana Heating and Air Conditioning, *AMV9/ACV9, Gas Furnace*, 2004. Amana. Form: PDB-AMV9. <[www.amana-hac.com](http://www.amana-hac.com)>
47. Amana Heating and Air Conditioning, *DMS9/DCS9 Distinctions™ Gas Furnace, Specification Sheet*, 2005. Form: PDB-DMS9. <[www.amana-hac.com](http://www.amana-hac.com)>
48. Amana Heating and Air Conditioning, *GUIC/GCIC, Induced Draft High Efficiency, Gas Furnace*, 2003. Amana. Form PDGUIC0300. <[www.amana-hac.com](http://www.amana-hac.com)>
49. Amana Heating and Air Conditioning, *GUIV (Upflow/Horizontal), Variable Speed, Two-Stage Gas Furnace, 80SSE11q*, Amana. <[www.amana-hac.com](http://www.amana-hac.com)>
50. Amana Heating and Air Conditioning, *GUIV, GAS-FIRED WARM AIR FURNACE, INSTALLATION INSTRUCTIONS*, 2004. Amana. Part No. 10759837. <[www.amana-hac.com](http://www.amana-hac.com)>
51. Amana Heating and Air Conditioning, *INSTALLATION & OPERATING INSTRUCTIONS for AMV8 GAS FIRED WARM AIR FURNACE 2-STAGE*, 2004. Amana.

52. Amana Heating and Air Conditioning, *INSTRUCTIONS, GUIS/GCIS, GAS-FIRED WARM AIR FURNACE, Installation Instructions*, 2004. Amana. Part No. 10759836. <www.amana-hac.com>
53. Amana Heating and Air Conditioning, *Specification Sheet, AMV8, Gas Furnace*, <www.Amana-hac.com>
54. Ducane Heating and Air Conditioning, *DPGB DOWNFLOW, GAS FURNACE, DEDICATED DOWNFLOW*, 2002. Ducane. 20593101 (10/02).
55. Ducane Heating and Air Conditioning, *Fits-All 80™, Gas Furnace, Upflow/Downflow Horizontal*, 2004. Ducane. 20590402.
56. Ducane Heating and Air Conditioning, *Horizontal 80™, Gas Furnace, Horizontal Left and Right*, 2002. Ducane. 20590802. <www.ducanehvac.com>
57. Nordyne, *Installation Manual, Residential Gas Furnace, \*RA Full Size Series 80+ High Efficiency Upflow/Horizontal, \*RK Full Size Series 80+ High Efficiency Downflow*, 2003. Nordyne. 7082910 (Replaces 708183A).
58. Nordyne, *Technical Specifications, FG6RK Series, Induced Draft - 80+ AFUE Input 60,000 - 135,000 Btuh*, 2003. Nordyne (Frigidaire). 967A-0903 (Replaces 967A-0902).
59. Nordyne, *Technical Specifications, M1 Series Furnaces, MIG\* Standing Pilot, MIM\* Hot Surface Ignition, MIS\* Oil Gun, MIB\* Gas Gun*, 2000. Nordyne. 713A-0800 (Replaces 713A-0800).
60. Nordyne, *Manual/Installation Instructions, CMF80-PG Convertible (65, 75, and 90 KBTU/H Inputs), CMF 100-PG (90 KBTU/H Input), CMF80-PO Convertible (65, 75, and 90 KBTU/H Inputs), CMF 100-PO (90 KBTU/H Input)*, 2003. Nordyne. 708062B (Replaces 708062A).
61. Nordyne, *Installation Manual, Residential Gas Furnaces, \*RA Full Size Series 80+ High Efficiency Upflow/Horizontal, \*RK Full Size Series 80+ High Efficiency Downflow*, 2003. Nordyne. 708291A (Replaces 7082910).
62. Nordyne, *Technical Specifications, M2RC Series, High Efficiency / Direct Vent, Condensing Upflow Gas Furnace, Induced Draft - 90+ AFUE Input, 80,000 & 100,000 Btuh*, 2000. Nordyne. 711A-0300 (Replaces 711A-0200).
63. Nordyne, *Technical Specifications, M2RL Series High Efficiency / Direct Vent, Condensing Downflow Gas Furnace, Induced Draft - 90+ AFUE Input, 60,000 80,000 & 100,000 Btuh*, 2001. Nordyne. 712A-0501 (Replaces 712A-0300).

64. Nordyne, *Technical Specifications, FG6RL Series High Efficiency / Direct Vent or Non Direct Vent Condensing Downflow Gas Furnace, Induced Draft - 90+ AFUE Input 40,000 - 120,000 Btuh*, 2004. Nordyne (Frigidaire). 965A-0504 (Replaces 965A-0902).
65. Nordyne, *Installations Instructions, \*TA Full Size Series High Efficiency (Upflow/Horizontal) Two-Stage Furnace with Fixed Speed Blower, \*TK Full Size Series High Efficiency (Downflow) Two-Stage Furnace with Fixed Speed Blower*, 2004. Nordyne. 7083900 (Replaces 7083740).
66. Nordyne, *Technical Specifications, FG6T(A,K) Series, High Efficiency, 2-Stage Gas Furnace, 80+ Upflow/Horizontal 80+ Downflow*, 2004. Nordyne (Frigidaire). 690B-1204 (Replaces 690B-1104).
67. Nordyne, *Installation Manual, Residential Gas Furnaces, \*RC 92+ Full Size Upflow Condensing Furnace \*RL 90+ Full Size Downflow Condensing Furnace*, 2004. Nordyne. 7083700 (Replaces 7083020).
68. Nordyne, *Installation Manual, Residential Gas Furnace, 80+ High Efficiency Upflow/Horizontal and Downflow with Variable Speed Blower*, 2003. Nordyne. 708275A (Replaces 7082750).
69. Nordyne, *Technical Specifications, FG6RA Series with Variable Speed Blower, High Efficiency Upflow/Horizontal Gas Furnace Induced Draft - 80+ AFUE, Input 72,000 - 144,000 Btuh*, 2003. Nordyne (Frigidaire). 063B-0803 (Replaces 063B-1100).
70. Nordyne, *TECHNICAL SPECIFICATIONS, FG6RA Series - High Efficiency Upflow/Horizontal Gas Furnace -Induced Draft - 80+ AFUE, Input 45,000 - 144,000 Btuh*, 2002. Nordyne (Frigidaire). 973A-0902 (Replaces 973A-1000).
71. Nordyne, *Technical Specifications, LIRC Series High Efficiency / Direct Vent or Non Direct Vent, Condensing Upflow/Horizontal Gas Furnace, Induced Draft - 92+ AFUE, Input 38,000 - 120,000 Btuh*, 2003. Nordyne (Frigidaire). 530B-1103 (Replaces 530B-0803).
72. Nordyne, *Technical Specifications, M3RL Series High Efficiency / Direct Vent, Condensing Downflow Gas Furnace, Induced Draft - 90+ AFUE, Input 60,000 & 80,000 Btuh*, 2003. Nordyne. 307B-0203 (Replaces 307B-1202).
73. Nordyne, *Technical Specifications, High Efficiency / Non Direct Vent, 2-Stage Gas Furnace with Variable Speed Blower, 80+ Upflow/Horizontal*, 2004. Nordyne (Frigidaire). 448B-1004 (Replaces 448B-0903).
74. Nordyne, *Installation Instructions, Residential Gas Furnaces, \*RA 80+ Series High Efficiency Compact Upflow/Horizontal*, 2004. Nordyne. 708337A(Replaces 7083370).

75. Nordyne, *Technical Specifications, LIRA Series, Upflow/Horizontal Gas Furnace, Induced Draft - 80+ AFUE, Input 45,000 - 126,000 Btuh*, 2004. Nordyne (Frigidaire). 021B-0304 (Replaces 021B-0803).
76. Goodman Air Conditioning and Heating, *92.6% AFUE Multi-Position Condensing Gas Furnace, GMNT Series*, 2001. Goodman Air Conditioning and Heating. SS-312D. <[www.goodmanmfg.com](http://www.goodmanmfg.com)>
77. Lennox Industries Inc., *Installation Instructions, G61MP SERIES UNITS*, 2004. Lennox Industries Inc. 504,891M.
78. Lennox Industries Inc., *Lennox Engineering Data: G61MP (Elite Series MultiPosition Gas Furnace)*, 2004. Lennox Industries, Inc. <[http://pirl.lennox.com/C03e7o14l/76E0ZC21u/ehb\\_g61mp\\_0406.pdf](http://pirl.lennox.com/C03e7o14l/76E0ZC21u/ehb_g61mp_0406.pdf)>
79. Lennox Industries Inc., *Lennox Engineering Data: G51MP (Elite Series Multi-Position Gas Furnace)*, 2004. Lennox Industries, Inc. <[http://pirl.lennox.com/C03e7o14l/76E0ZC21u/ehb\\_g51mp\\_0412.pdf](http://pirl.lennox.com/C03e7o14l/76E0ZC21u/ehb_g51mp_0412.pdf)>
80. Lennox Industries Inc., *Installation Instructions, G51MP SERIES UNITS*, 2004. Lennox Industries Inc. 504,995M.
81. Lennox Industries Inc., *Lennox Engineering Data: G43UF (Merit Series Upflow Gas Furnace)*, 2004. Lennox Industries, Inc. <[http://pirl.lennox.com/C03e7o14l/76E0ZC21u/ehb\\_g43uf\\_0412.pdf](http://pirl.lennox.com/C03e7o14l/76E0ZC21u/ehb_g43uf_0412.pdf)>
82. Lennox Industries Inc., *Installation Instructions, G43UF SERIES UN*, 2004. Lennox Industries Inc. GAS UNITS, 504,994M.
83. Lennox Industries Inc., *Lennox Engineering Data: G41UF (Merit Series Downflow Gas Furnace)*, 2004. Lennox Industries, Inc. <[http://pirl.lennox.com/C03e7o14l/76E0ZC21u/ehb\\_g41uf\\_0402.pdf](http://pirl.lennox.com/C03e7o14l/76E0ZC21u/ehb_g41uf_0402.pdf)>
84. Lennox Industries Inc., *Unit Information, G24M Series Unit*, 2001. Lennox Industries Inc.
85. Lennox Industries Inc., *Lennox Engineering Data: G40UH (Merit Series Upflow/Horizontal Gas Furnace)*, 2004. Lennox Industries, Inc. <[http://pirl.lennox.com/C03e7o14l/76E0ZC21u/ehb\\_g40uh\\_0407.pdf](http://pirl.lennox.com/C03e7o14l/76E0ZC21u/ehb_g40uh_0407.pdf)>
86. Lennox Industries Inc., *Lennox Engineering Data: G40DF (Merit Series Upflow/Horizontal Gas Furnace)*, 2003. Lennox Industries, Inc. 2003.) <[http://pirl.lennox.com/C03e7o14l/76E0ZC21u/ehb\\_g40df\\_0307.pdf](http://pirl.lennox.com/C03e7o14l/76E0ZC21u/ehb_g40df_0307.pdf)>

87. Lennox Industries Inc., *Lennox Engineering Data: G40UH (Merit Series Upflow/Horizontal Gas Furnace) Bulletin No. 210320.*, 2002. Lennox Industries, Inc. (Last accessed July, 2003.)  
<[http://www.lennoxcommercial.com/tech\\_pdf/ehb\\_g40uh\\_0206.pdf](http://www.lennoxcommercial.com/tech_pdf/ehb_g40uh_0206.pdf)>
88. Lennox Industries Inc., *Lennox Engineering Data: G40DF (Merit Series Upflow/Horizontal Gas Furnace) Bulletin No. 210320.*, 2002. Lennox Industries, Inc. (Last accessed June 2002, 2002.)  
<[http://www.lennoxcommercial.com/tech\\_pdf/ehb\\_g40df\\_0206.pdf](http://www.lennoxcommercial.com/tech_pdf/ehb_g40df_0206.pdf)>
89. Lennox Industries Inc., *G50UHi, ELITE® SERIES, Up-Flow / Horizontal - Precision Speed Blower, AFUE - 80.0%, Input - 66,000 to 132,000 Btuh, Nominal Add-on Cooling - 2 to 5 tons*, 2004. Lennox Industries Inc. Bulletin No. 210380.
90. Lennox Industries Inc., *Installation Instructions, G50UHi Series*, 2004. Lennox Industries Inc. 504,935M.
91. Lennox Industries Inc., *Lennox Engineering Data: G50UH (Elite Series Upflow/Horizontal Gas Furnace)*, 2003. Lennox Industries, Inc.  
<[http://pirl.lennox.com/C03e7o14l/76E0ZC21u/ehb\\_g50uh\\_0307.pdf](http://pirl.lennox.com/C03e7o14l/76E0ZC21u/ehb_g50uh_0307.pdf)>
92. Lennox Industries Inc., *Lennox Engineering Data: G50DF (Elite Series Downflow Gas Furnace)*, 2003. Lennox Industries, Inc.  
<[http://pirl.lennox.com/C03e7o14l/76E0ZC21u/ehb\\_g50df\\_0307.pdf](http://pirl.lennox.com/C03e7o14l/76E0ZC21u/ehb_g50df_0307.pdf)>
93. Lennox Industries Inc., *G50UH, ELITE® SERIES, Up-Flow / Horizontal, AFUE - 80%, Input - 44,000 to 154,000 Btuh, Add-on Cooling - 1.5 to 5 Tons*, 2002. Lennox Industries Inc. Bulletin No. 210279.
94. Lennox Industries Inc., *Installation Instructions, G50DF(X) Series*, 2004. Lennox Industries Inc. 504,847M.
95. Lennox Industries Inc., *Installation Instructions, G50UH(X) Series*, 2001. Lennox Industries Inc. 504,120M.
96. Lennox Industries Inc., *Installation Manual, G40UH(X) Series*, 2001. Lennox Industries Inc. 553,990M.
97. Lennox Industries Inc., *Installation Instructions, G60DF(X) Series*, 2003. Lennox Industries Inc. 504,782M.
98. Lennox Industries Inc., *Installation Instructions, G60UH(X) Series*, 2003. Lennox Industries Inc. 504,780M.



99. Lennox Industries Inc., *G60DF, ELITE® SERIES, Down-Flow Two-Stage Heat, AFUE - 80%, Input - 66,000 to 110,000 Btuh, Add-on Cooling - 2 to 4 Tons*, 2003. Lennox Industries Inc. Bulletin No. 210355.
100. Lennox Industries Inc., *G60UH, ELITE® SERIES, Up-Flow / Horizontal, Two-Stage Heat, AFUE - 80%*,  
*Input - 66,000 to 132,000 Btuh, Nominal Add-on Cooling - 1.5 to 5 tons*, 2004. Lennox Industries Inc. Bulletin No. 210350.
101. Lennox Industries Inc., *Lennox Engineering Data: G60DF (Elite Series Downflow Gas Furnace)*, 2003. Lennox Industries, Inc.  
<[http://pirl.lennox.com/C03e7o14l/76E0ZC21u/ehb\\_g60df\\_0307.pdf](http://pirl.lennox.com/C03e7o14l/76E0ZC21u/ehb_g60df_0307.pdf)>
102. Lennox Industries Inc., *G60DFV, Dave Lennox Signature Collection, with Silent Comfort Technology, Down-Flow, Variable Speed Blower, Two-stage Heat, AFUE 80%*, 2004. Lennox Industries Inc. Bulletin No. 210356, Model Number G60 DF V - 36A - 070 X.
103. Lennox Industries Inc., *G60UHV, Dave Lennox Signature Collection with Silent Comfort Technology, Up-Flow/Horizontal, Two Stage Heat, Variable Speed Blower, AFUE, 80.0%*, 2003. Lennox Industries Inc. Model Number G60UHV, 36A, 070X.  
<[www.lennox.com](http://www.lennox.com), [www.lennox.com](http://www.lennox.com)>
104. Lennox Industries Inc., *G60DFV(X) Series*, 2002. Lennox Industries Inc.
105. Lennox Industries Inc., *G60UHV, GAS FURNACES ENGINEERING DATA, Up-Flow/Horizontal, Two Stage Heat - Variable Speed Blower, AFUE - 80.0%, Input - 66,000 to 132,000 Btuh (19.3 to 38.7 kW), Add-on Cooling - 2 to 5 Tons (7.0 to 17.6 kW)*, 2001. Lennox Industries Inc. Bulletin No. 210346.
106. Lennox Industries Inc., *G61MPV Dave Lennox Signature Collection, with Silent Comfort Technology, Multi-Position, Variable Speed Blower*, 2004. Lennox Industries Inc. Two-Stage Heat, Direct Vent/Non-Direct Vent, AFUE up to 94.6%, Input, 44,000 to 132,000 Btuh, Nominal Add-on Cooling, 2 to 5 tons. <[www.lennox.com](http://www.lennox.com), [www.davent.com](http://www.davent.com)>
107. National Comfort Products, *COMFORT-PACK GAS HEATING - ELECTRIC COOLING, CPG SERIES*, National Comfort Products. <[www.nationalcomfortproducts.com](http://www.nationalcomfortproducts.com)>
108. National Comfort Products, *Installation and Maintenance Instructions, COMFORT-PACK, Packaged Through-the-Wall Air Conditioner with Gas Heat*, National Comfort Products. 142-99-541. <[www.nationalcomfortproducts.com](http://www.nationalcomfortproducts.com)>
109. ECR International Ltd., *Model GTH Category IV Natural Gas and LP Gas High Efficiency (Condensing) Warm, Installation, Operation and Maintenance Manual*, ECR International Ltd.

110. ECR International Ltd., *Model GTH Natural Gas and LP Gas High Efficiency (Condensing) Warm Air Furnace, User's Manual*, 2003. ECR International Ltd. 29783 R2 1/24/2003.
111. ECR International Ltd., *Model GTM Category I Natural Gas and LP Gas Mid Efficiency Warm Air Furnace (Installation, Operation and Maintenance Manual)*, 2003. ECR International Ltd. 29784 R2 1/24/2.
112. ECR International Ltd., *Model GTM Natural Gas and LP Gas Mid-Efficiency Warm Air Furnace (User's Information Manual)*, 2003. ECR International Ltd. 29785 R2 1/24/2003.
113. Rheem Manufacturing Company, *RGGD- SERIES, Models with Input Rates from 60,000 to 120,000 BTU/HR, [17.58 to 35.16 kW], (U.S. & Canadian Models)*, 2004. Rheem Manufacturing Company. FORM No. G11-475 REV. 5, Supersedes Form No. G11-475 Rev. 4.
114. Skymark International, *SKYPAK Heating & Cooling, Self Contained Packages, Replacement for "Fedders Vertipak & Mueller Climatrol"*, 2004. Skymark International. <[www.skymarkinternational.com](http://www.skymarkinternational.com)>
115. Skymark International, *SKYPAK II, Heating & Cooling Self Contained Packages*, 2004. Skymark International. <[www.skymarkinternational.com](http://www.skymarkinternational.com)>
116. International Comfort Products, *Performance 90, Single Stage, N9MP1, Tempstar Heating and Cooling Products*, 2004. International Comfort Products. 440 21 1012 04 (7/2004).
117. International Comfort Products, *90+ Single Stage, N9MP1 & N9MP2 \*9MPD, Installation Instructions*, 2002. International Comfort Products. 440 01 1114 (00).
118. International Comfort Products, *Performance 80 Single Stage, N8MPL (Tempstar Heating and Cooling Products)*, 2004. International Comfort Products. 441 21 2611 03 (03/2004).
119. International Comfort Products, *Multi Position Single Stage 2-Stage Gas Furnaces, N8MPN, N8MPL, \*8MPN, \*8MPL, \*8DNL, \*8MPT & \*8MPV, (Denotes Brand (T, C or)), Service Manual*, 2003. International Comfort Products. 441 08 2010 00.
120. International Comfort Products, *Premier 90 2- Stage PSC, T9MPT (Tempstar Heating and Cooling Products)*, 2004. International Comfort Products. 440 21 2012 02 (7/2004).

121. International Comfort Products, *2-Stage Variable Speed 80, T8MPV, (Tempstar Heating and Cooling Products)*, 2004. International Comfort Products. 441 21 2011 04 (07/2004).
122. International Comfort Products, *Deluxe 80 Single Stage Downflow, T8DNL, Tempstar Heating and Cooling Products*, 2004. International Comfort Products. 441 21 2312 04 (04/2004).
123. International Comfort Products, *Deluxe 80 2-Stage PSC, T8MPT, (Tempstar Heating and Cooling Products)*, 2004. International Comfort Products. 441 21 2010 04 (07/2004).
124. International Comfort Products, *Deluxe 80 Single Stage, T8MPN, Tempstar Heating and Cooling Products*, 2004. International Comfort Products. 441 21 2310 03 (03/2004).
125. International Comfort Products, *Deluxe 90, Single Stage, T9MPD (Tempstar Heating and Cooling Products)*, 2004. International Comfort Products. 440 21 1111 03 (7/2004).
126. International Comfort Products, *Performance 80 Single Stage, N8MPN, Tempstar Heating and Cooling Products*, 2004. International Comfort Products. 441 21 2610 04 (03/2004).
127. International Comfort Products, *2- Stage Variable Speed 90, T9MPV, (Tempstar Heating and Cooling Products)*, 2004. International Comfort Products. 440 21 2012 02 (7/2004).
128. International Comfort Products, *Performance 90, Single Stage, N9MP2 (Tempstar Heating and Cooling Products)*, 2004. International Comfort Products. 440 21 1013 03 (7/2004).
129. Texas Furnace, *VSA 90-PLUS Spec Sheet High Efficiency Upflow Gas Furnace*, Texas Furnace. <[www.texasfurnace.com](http://www.texasfurnace.com)>
130. Texas Furnace, *MULTI-POSITION FURNACE INSTALLER'S INFORMATION MANUAL*, Texas Furnace. 414470F.
131. Texas Furnace, *ABA 80-PLUS By Texas Furnace, LLC Spec Sheet; The ABA is an 80%+ A.F.U.E. multi-position gas furnace.*, Texas Furnace. ABASS 080503. <[www.texasfurnace.com](http://www.texasfurnace.com)>
132. Texas Furnace, *HIGH-EFFICIENCY DOWNFLOW / HORIZONTAL FURNACE INSTALLER'S INFORMATION MANUAL*, Texas Furnace. 431570 G.
133. Texas Furnace, *CSA 90-PLUS Spec Sheet, High Efficiency Counterflow / Horz. Gas Furnace*, Texas Furnace. <[www.texasfurnace.com](http://www.texasfurnace.com)>

134. Texas Furnace, *HIGH-EFFICIENCY UPFLOW FURNACE INSTALLER'S INFORMATION MANUAL*, Texas Furnace. 422690 I.
135. Thermo Pride, *INDUCED DRAFT HIGHBOY AND COUNTERFLOW/HORIZONTAL GAS FURNACE INSTALLATION AND SERVICE MANUAL MODELS FOR USE WITH NATURAL GAS: MHA-50N, MHA-75N, MHA-100N, MHA-125N, MDA-50N, MDA-75N, MDA-100N, MDA-125N, FOR USE WITH L.P. GAS (PROPANE) MHA-50P, MHA-75P, MHA-100P, MHA-125P, MDA-50P, MDA-75P, MDA-100P, MDA-125P*, Thermo Pride. MG-993 ECN 4456-MA.
136. Thermo Pride, *INDUCED DRAFT HIGHBOY AND COUNTERFLOW/HORIZONTAL GAS FURNACE INSTALLATION AND SERVICE MANUAL MODELS: MHA1-50N, MDA1-50N, MHA1-75N, MDA1-75N, MHA1-100N, MDA1-100N, MHA1-125N, MDA1-125N*, Thermo Pride. MG-1008 ECN 4283-MA.
137. Thermo Pride, *CONDENSING GAS FURNACE, HIGHBOY AND COUNTERFLOW, INSTALLATION AND SERVICE MANUAL MODELS FOR USE WITH NATURAL GAS, CHB-50N, CHB-75N, CHB-100N, CHB-125N, CDB-50N, CDB-75N, CDB-100N, CDB-125N, FOR USE WITH L.P. GAS (PROPANE), CHB-50P, CHB-75P, CHB-100P, CHB-125P, CDB-50P, CDB-75P, CDB-100P, CDB-125P*, 2000. Thermo Pride. MG-985, ECN4199-MI 05/00.
138. Thermo Pride, *Gas Furnace INSTALLATION AND SERVICE MANUAL MODELS: PGT5-100, PGT11-125, PGT16-160, PGL20-180, PGL33-250, PGL37-312, & PGL39-400*, Thermo Pride. MG-807C, ECN 4403-MA.
139. Thermo Pride, *ECM OPERATION MANUAL FOR USE WITH MODELS: CHX1-75N, CDX1-75N, CHX1-100N, CDX1-100N, CHX1-125N, CDX1-125N*, Thermo Pride. MG-1018, ECN4547-MA.
140. Thermo Pride, *TWO STAGE CONDENSING GAS FURNACE INSTALLATION AND OPERATION MANUAL MODELS: FOR USE WITH NATURAL GAS OR LP GAS (PROPANE) CHX1-75N, CDX1-75N, CHX1-100N, CDX1-100N, CHX1-125N, CDX1-125N*, Thermo Pride. MG-1010, ECN4470-MA.
141. Trane Co., *Downflow/Horizontal Right or Downflow/Horizontal Left Induced Draft Gas Furnace; XR 80, TDD040, 060, 080, 100, 120, 140C; Single-Stage Fan Assisted Combustion System*, 2002. Trane Co. Pub. No. 22-1671-04-0702 (EN).
142. Trane Co., *Upflow/Horizontal Right or Upflow/Horizontal Left Induced Draft Gas Furnace, XR 80, TUD040, 060, 080, 100, 120, 140C, Single-Stage Fan Assisted Combustion System*, 2002. Trane Co. Pub. No. 22-1640-06-0702 (EN).
143. Trane Co., *Upflow/Horizontal Left Downflow/Horizontal Right Condensing, Direct Vent*

- Gas-Fired Furnace; XR 90, TUX040, 060, 080, 100, 120C; TDX040, 060, 080, 100, 120C, Single-Stage Fan Assisted Combustion System, 2003. Trane Co. Pub. No. 22-1674-04-0803 (EN).*
144. Trane Co., *Downflow/Horizontal Right, Induced Draft Gas Furnace; XB 80, TDE040, 060, 080, 100, 120A, Single-Stage Fan Assisted Combustion System, 2002. Trane Co. Pub. No. 22-1677-03-1202 (EN).*
145. Trane Co., *Upflow/Horizontal Right or Upflow Horizontal Left Induced Draft Gas Furnace; XB 80, TUE040, 060, 080, 100, 120, 140A, Single-Stage Fan Assisted Combustion System, 2002. Trane Co. Pub. No. 22-1666-03-0702 (EN).*
146. Trane Co., *Upflow/Downflow Horizontal Right or Left Gas-Fired Furnace, XL 80, TUD040, 060, 080, 100, 120, 140R, TDD040, 060, 080, 100, 120, 140R, 2003. Trane Co. Pub. No. 22-1639-06-1202 (EN).*
147. Trane Co., *Trane Product Data: XV 90, 2004. Trane Co.*
148. Trane Co., *Upflow/Horizontal Two-stage Condensing Gas-Fired Furnace; XV 90, TUY060, 080, 100, 120R9V-V, Variable Speed Blower, Variable Speed Inducer, 2000. Trane Co. Pub. No. 22-1682-04-0400 (EN).*
149. Trane Co., *Xe 90, Downflow/Horizontal Condensing Gas-Fired Furnace, Single Stage, Models TDC040, 060, 080, 100, 120C, Trane Co. Pub. No. 22-1670-02.*
150. Trane Co., *Upflow/Horizontal Left, Downflow/Horizontal Right Two Stage Condensing Gas-Fired Furnace; XL 90, TUX060, 080, 100, 120R, TDX060, 080, 100, 120R, Direct Vent with Variable Speed Inducer, 2003. Trane Co. Pub. No. 22-1705-02-1202 (EN).*
151. Trane Co., *Upflow/Horizontal Two-Stage Condensing Gas-Fired Furnace, XL 90, TUX060, 080, 100, 120R-V, Direct Vent with Variable Speed Inducer, Trane Co. Pub. No. 22-1705-01-0400 (EN).*
152. Trane Co., *Downflow/Horizontal Two-stage Condensing Gas-Fired Furnace, XL 90, TDX060, 080, 100, 120R-V, Direct Vent with Variable Speed Inducer, Trane Co. Pub. No. 22-1706-01-0400 (EN).*
153. York Heating and Air Conditioning, *TECHNICAL GUIDE AFFINITY MODELS: PV9, GAS-FIRED, CONDENSING / HIGH EFFICIENCY, TWO STAGE, VARIABLE UPFLOW FURNACES, UP TO 94% AFUE NATURAL GAS 40 - 120 MBH INPUT, 2005. Unitary Products Group. 036-21584-001 Rev. C (0205).*
154. York Heating and Air Conditioning, *USER'S INFORMATION, MAINTENANCE AND SERVICE MANUAL HIGH EFFICIENCY TUBULAR HEAT EXCHANGER SERIES*

- MODELS: PV9 / FC9V / FL9V (Two Stage Variable Speed Upflow)*, Unitary Products Group. 035-20500-001 Rev. A (0904).
155. York Heating and Air Conditioning, *TECHNICAL GUIDE AFFINITY MODELS: PV8, GAS-FIRED, HIGH EFFICIENCY TWO STAGE VARIABLE, UPFLOW/HORIZONTAL FURNACES, STANDARD & LoNO<sub>x</sub>, 80% AFUE NATURAL GAS, 80 - 120 MBH INPUT*, 2004. Unitary Products Group. 036-21606-001 Rev. A (0804).
  156. York Heating and Air Conditioning, *USER'S INFORMATION, MAINTENANCE AND SERVICE MANUAL HIGH EFFICIENCY TUBULAR HEAT EXCHANGER SERIES MODELS: PV8 / FC8V / FL8V / LC8V / LL8V Two Stage Variable Speed Upflow / Horizontal / LoNO<sub>x</sub>*, 2004. Unitary Products Group. 035-19913-002 Rev. B (0704).
  157. York Heating and Air Conditioning, *TECHNICAL GUIDE AFFINITY MODELS: PT9, GAS-FIRED, CONDENSING / HIGH EFFICIENCY, DOWNFLOW/HORIZONTAL TWO STAGE FURNACES, NATURAL GAS 60 - 120 MBH INPUT*, 2005. Unitary Products Group. 036-21633-001 Rev. A (0205).
  158. York Heating and Air Conditioning, *TECHNICAL GUIDE AFFINITY MODELS: PT9, GAS-FIRED, CONDENSING / HIGH EFFICIENCY, UPFLOW TWO STAGE, FURNACES UP TO 94% AFUE NATURAL GAS 40 - 120, MBH INPUT*, 2005. Unitary Products Group. 036-21581-001 Rev. C (0205).
  159. York Heating and Air Conditioning, *USER'S INFORMATION, MAINTENANCE AND SERVICE MANUAL MODELS: PT9 / FC9T / FL9T (Two Stage Downflow/Horizonta*, 2005. Unitary Products Group. 100276-UUM-A-0205.
  160. York Heating and Air Conditioning, *TECHNICAL GUIDE AFFINITY MODELS: PT8, GAS-FIRED, HIGH EFFICIENCY TWO STAGE , UPFLOW/HORIZONTAL, FURNACES STANDARD & LoNO<sub>x</sub> 80% AFUE NATURAL, GAS 60 - 120 MBH INPUT*, 2004. Unitary Products Group. 036-21602-002 Rev. A (1004).
  161. York Heating and Air Conditioning, *TECHNICAL GUIDE AFFINITY MODELS: PT8, GAS-FIRED HIGH EFFICIENCY TWO STAGE , DOWNFLOW, FURNACES 80% AFUE NATURAL GAS 60 - 120 MBH INPUT*, 2004. Unitary Products Group. 036-21598-001 Rev. A (0804).
  162. York Heating and Air Conditioning, *TECHNICAL GUIDE AFFINITY MODELS: PS8, GAS-FIRED HIGH EFFICIENCY SINGLE STAGE DOWNFLOW FURNACES, 80% AFUE, NATURAL GAS 40 - 130 MBH INPUT*, 2004. Unitary Products Group. 036-21610-002 Rev. A (1104).
  163. York Heating and Air Conditioning, *TECHNICAL GUIDE AFFINITY MODELS: PS8, GAS-FIRED HIGH EFFICIENCY SINGLE STAGE, UPFLOW/HORIZONTAL*

- FURNACES STANDARD & LoNO<sub>x</sub> 80% AFUE, NATURAL GAS 40 - 130 MBH INPUT*, 2004. Unitary Products Group. 036-21615-002 Rev. A (1004).
164. York Heating and Air Conditioning, *USER'S INFORMATION, MAINTENANCE AND SERVICE MANUAL HIGH EFFICIENCY TUBULAR HEAT EXCHANGER SERIES MODELS: PS8 / FC8S / FL8S / LC8S / LL8S (Single Stage Upflow / Horizontal / LoNO<sub>x</sub>)*, 2004. Unitary Products Group. 035-19657-002 Rev. A (0704).
165. York Heating and Air Conditioning, *USER'S INFORMATION, MAINTENANCE AND SERVICE MANUAL MODELS: G8C/ GF8 (Single Stage Multi-Position)*, 2004. Unitary Products Group. 035-19992-001 Rev. A (0404).
166. York Heating and Air Conditioning, *TECHNICAL GUIDE, 80 AFUE, MULTI-POSITION GAS FURNACES, MODELS: G8C SERIES, 4-POSITION, 50-125 MBH INPUT, 3-POSITION, 150 MBH INPUT*, 2002. Unitary Products Group. 036-21120-002 Rev. A (1102).
167. York Heating and Air Conditioning, *TECHNICAL GUIDE AFFINITY MODELS: PS9 GAS-FIRED CONDENSING / HIGH EFFICIENCY DOWNFLOW/HORIZONTAL SINGLE STAGE FURNACES UP TO 92% AFUE NATURAL GAS 40 - 120 MBH INPUT*, 2004. Unitary Products Group. 036-21621-002 Rev. A (1204).
168. York Heating and Air Conditioning, *TECHNICAL GUIDE AFFINITY MODELS: PS9 GAS-FIRED CONDENSING / HIGH EFFICIENCY, UPFLOW SINGLE STAGE FURNACES 92% AFUE, NATURAL GAS 40 - 135 MBH INPUT*, 2005. Unitary Products Group. 036-21578-002 Rev. B (0205).
169. York Heating and Air Conditioning, *USER'S INFORMATION, MAINTENANCE AND SERVICE MANUAL HIGH EFFICIENCY TUBULAR HEAT EXCHANGER SERIES MODELS: PS9 / FC9S / FL9S (Single Stage Upflow)*, 2005. Unitary Products Group. 105565-UUM-A-0205.
170. York Heating and Air Conditioning, *TECHNICAL GUIDE, MODELS: GY9S GAS-FIRED CONDENSING / HIGH EFFICIENCY UPFLOW FURNACES, 92% AFUE, NATURAL GAS, 40 - 135 MBH INPUT*, 2005. Unitary Products Group. 036-21545-003 Rev. B (0205).
171. York Heating and Air Conditioning, *USER'S INFORMATION, MAINTENANCE AND SERVICE MANUAL HIGH EFFICIENCY TUBULAR HEAT EXCHANGER SERIES MODELS: GY9S / GM9S / GF9S (Single Stage Upflow)*, 2005. Unitary Products Group. 105562-UUM-A-0205.
172. York Heating and Air Conditioning, *TECHNICAL GUIDE, LATITUDE, MODELS: GY8S/LY8S, GAS-FIRED, HIGH EFFICIENCY SINGLE STAGE*,

- UPFLOW/HORIZONTAL FURNACES, STANDARD & LoNO<sub>x</sub>, NATURAL GAS 40 - 130 MBH INPUT*, 2004. Unitary Products Group. 036-21618-002 Rev. A (1004).
173. York Heating and Air Conditioning, *USER'S INFORMATION, MAINTENANCE AND SERVICE MANUAL HIGH EFFICIENCY TUBULAR HEAT EXCHANGER SERIES MODELS: GY8S / GM8S / LY8S / LM8S / LF8 (Single Stage Upflow / Horizontal / LoNO<sub>x</sub>)*, 2004. Unitary Products Group. 035-20465-001 Rev. A (0704).
174. York Heating and Air Conditioning, *USER'S INFORMATION, MAINTENANCE AND SERVICE MANUAL HIGH EFFICIENCY COMMERCIAL BELT DRIVE SERIES MODELS: GY8S160E30UH21 (Single Stage Upflow /Horizontal)*, 2005. Unitary Products Group. 106306-UUM-A-0205.
175. York Heating and Air Conditioning, *Installation Manual, TWO-STAGE GAS-FIRED MID-EFFICIENCY FURNACES TUBULAR HEAT EXCHANGER SERIES MODELS: P\*DU / G8D-UH / L8D-UH (Upflow/Horizontal) P\*DD & G8D-DN (Downflow) 57 - 120 MBH INPUT*, 2000. Unitary Products Group. 035-17429-000 REV. A (04/00).
176. York Heating and Air Conditioning, *Installation Manual, TWO-STAGE ULTRA MID-EFFICIENCY GAS-FIRED VARIABLE SPEED FURNACES Upflow / Horizontal Models: P\*DU - "V" / G8V Up To 130 MBH Output*, 2000. Unitary Products Group. 035-17438-000 REV. A (5/00).
177. York Heating and Air Conditioning, *TECHNICAL GUIDE MODELS: P\*DU-V TWO STAGE ULTRA GAS-FIRED VARIABLE SPEED FURNACES 80% AFUE 64 - 96 MBH OUTPUT MID-EFFICIENCY INDUCED COMBUSTION*, 2003. Unitary Products Group. 036-21061-003 Rev. B (0203).
178. York Heating and Air Conditioning, *Installation Instructions, MID-EFFICIENCY GAS-FIRED FURNACES TUBULAR HEAT EXCHANGER SERIES MODELS: P\*HU / G8T-UH / FL8-UH / L8T-UH (Upflow/Horizontal) 40 - 130 MBH INPUT, P\*DN / G8T-DN / L8T-DN (Downflow) 40 - 130 MBH INPUT*, 2000. Unitary Products Group. 035-17405-000 Rev. B (900).
179. York Heating and Air Conditioning, *TECHNICAL GUIDE MODELS: P\*HU, 80 AFUE UPFLOW/HORIZONTAL GAS-FIRED FURNACES, 32-104 MBH OUTPUT HIGH-EFFICIENCY INDUCED COMBUSTION*, 2004. Unitary Products Group. 036-21047-002 Rev. A (0204).
180. U.S. Department of Energy-Office of Building Technologies, *Technical Support Document: Energy Conservation Program for Consumer Products: Energy Conservation Standards for Residential Furnaces and Boilers - ANOPR Version*, 2003. U.S. Department of Energy. Washington, DC. Report No. LBNL-53984.