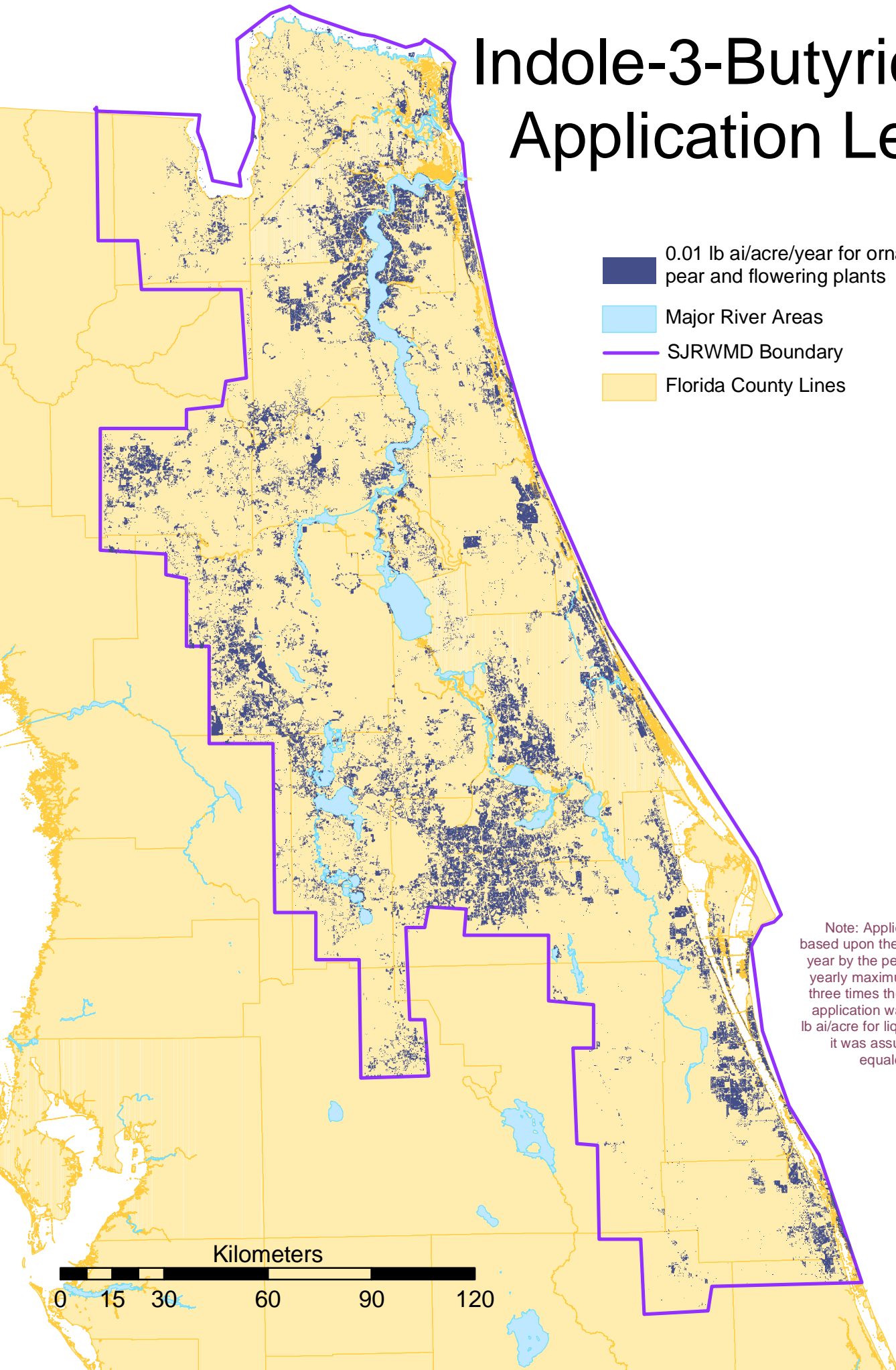


Indole-3-Butyric Acid Application Levels



Note: Application amounts are based upon the maximum allowed per year by the pesticide label. Where a yearly maximum was not available, three times the maximum individual application was used. To calculate lb ai/acre for liquid pesticide products, it was assumed that one pint equaled one pound.

Kilometers

0 15 30 60 90 120

