

Three BNL Scientists Named APS Fellows

Three BNL scientists — Bruce G. Gibbard, Alex Harris, and Li-Hua Yu — have been named Fellows of the American Physical Society (APS), a professional organization with about 43,000 members. Election to APS Fellowship is limited to no more than one half of one percent of its membership in a given year, and election for this honor indicates recognition by scientific peers for outstanding contributions to physics. The BNL scientists are among 201 Fellows elected in 2004.

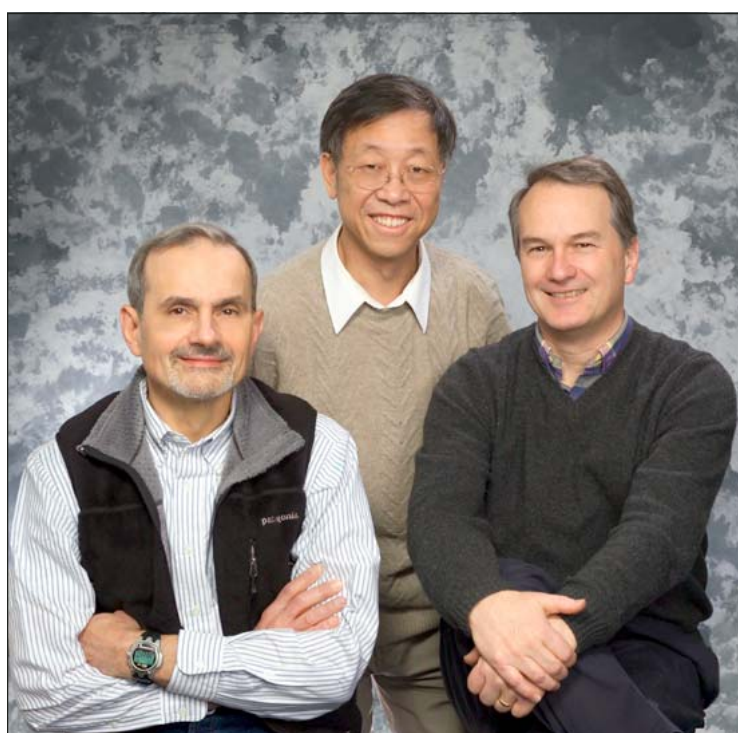
Bruce G. Gibbard, Physics Department

In becoming an APS Fellow, Bruce G. Gibbard was cited "For leadership in planning and implementing large-scale computing facilities for high-energy and nuclear physics."

Gibbard earned a Ph.D. in physics from the University of Michigan in 1970, and he was a junior visiting scientist at CERN, 1970-72. In 1972, he became a research associate at Cornell University, and, in 1978, he joined the Lab as an associate physicist.

From 1984 to 1997, Gibbard led the computing, software and data acquisition effort for the large D-Zero experiment at DOE's Fermi National Accelerator Laboratory. In 1995, this experiment reported the discovery of the top quark, the last of six predicted quarks, which are fundamental building blocks of matter. In 1997, Gibbard was named director of BNL's Relativistic Heavy Ion Collider (RHIC) Computing Facility. This facility contains 1,500 dual processor computers, which are used to translate digitalized signals from hundreds of thousands of detector elements in RHIC experiments into patterns from which scientists can gain

(continued on page 2)



(From left) Bruce G. Gibbard, Li-Hua Yu, and Alex Harris

Alex Harris, Chemistry Department

Alex Harris was recognized by the APS "For his pioneering work in developing vibrational spectroscopy to probe ultra-fast dynamics at surfaces, and for elucidating the vibrational energy flow pathways of absorbers at solid surfaces."

Harris explained, "At Bell Labs, I developed techniques to study how energy flows between a molecule and solid surfaces, an important process during chemical reactions in catalysis or electronic device processing. That energy transfer often occurs on a time scale of picoseconds, or trillionths of a second. The studies therefore depended on ultrafast laser methods applied to surface science."

After receiving a Ph.D. in physical chemistry from the University of California at Berkeley in 1985, Harris joined the technical staff in Chemical

(continued on page 2)

Li-Hua Yu, National Synchrotron Light Source Department

Li-Hua Yu's APS citation reads: "For creative contributions to the theory of self-amplified spontaneous emissions [SASE] and high-gain harmonic generation [HGHG], and the experimental demonstration of the HGHG free electron laser."

Yu has contributed significantly in developing two types of lasers that are important for scientific research: the SASE laser and the HGHG laser. In the SASE process, the light the laser emits for experiments starts from noise, or random signals. In the HGHG process, the output light starts from fast-moving electrons interacting with a seeding laser that shifts light to a higher frequency and makes it significantly more coherent, meaning electrons move in a coordinated way to emit light.

(continued on page 2)

Lab Added Over \$26 Million To LI Economy in 2004

Plus, salaries of about \$279 million are spent mostly on Long Island

BNL purchased \$26.7 million worth of supplies and services from Long Island businesses in fiscal year (FY) 2004, a period from October 1, 2003, to September 30, 2004.

In addition to BNL's buying goods and services from Long Island vendors, most of the Lab's approximately 2,700 employees live in Suffolk County and do most of their shopping on the Island. All told, employee salaries, wages and fringe benefits account for 61 percent, or about \$279 million of the Lab's total annual budget of \$454 million.

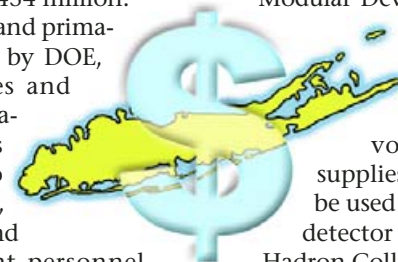
Owned and primarily funded by DOE, BNL creates and operates major facilities available to university, industrial and government personnel for basic and applied research in the physical, biomedical and environmental sciences, and energy technologies.

In FY2004, BNL's total procurement budget was approximately \$160 million. Out of that amount, about \$22.4 million was spent on 3,000 purchases in Suffolk County, and about \$4.3 million went toward 507 purchases made in Nassau County.

Mary-Faith Healey, Procurement & Property Management Office Manager, said, "We buy locally whenever we can. We like to support the local economy on Long Island, since it is our home."

BNL's top two local vendors in FY04 were Bensin Contracting, Inc. of Holtsville & Modular Devices, Inc. of Shirley. Bensin Contracting, Inc. was the number one vendor with a contract with the Lab for more than \$1.94 million to supply a groundwater cleanup system on site, part of a long-term environmental remediation project at the Lab. Bensin was the number two vendor in FY03. In that year, the company installed groundwater treatment systems south of the BNL site.

BNL contracted to pay Modular Devices approxi-



mately \$1.90 million to construct low-voltage power supplies, which will be used in the ATLAS detector in the Large Hadron Collider at CERN,

the European Organization for Nuclear Research. The custom-made power supply — unique in size and number of voltages and made to withstand radiation — will be sent to CERN and placed more than 300 feet underground in a detector the size of a seven-story building. BNL manages the U.S. participation in fabricating the ATLAS detector, which, after beginning operations in 2007, has breakthrough discovery potential concerning the nature of elementary particles. The ATLAS project is funded by DOE and the National Science Foundation.

— Diane Greenberg

BNL's Snow Removal Personnel Do Great Job

"Let it snow, let it snow, let it snow" may be some people's ideal of winter, but for staff of the Plant Engineering (PE) Division's Site Maintenance and Custodial Services, snow and ice is a tremendous challenge.

The Lab site contains more than 34 miles of roads, 11 miles of sidewalks, and 83 acres of parking lots. In a major snowfall with ice, to clear the site for driving and walking, the crews must plow roadways, clear sidewalks and shovel out building entrances. Within the course of a year they dispense about 900 tons of a 50/50 mix of sand and salt over the roads and parking lots. With the assistance of the custodial staff, they apply more than 23 tons of calcium chloride pellets to site walkways, steps, and landings annually. Aiding Site Maintenance in snow clearing efforts are Staff Services Motor Pool staff who help to keep vehicles and equipment running throughout each event.

"It's a huge undertaking," says Tom Roza, PE's Site Superintendent, who, with Rich Jones, Nick Mercado, Mel Bonanno and Mike Pankowski, all of PE, organizes the task of clearing the site. "But our people know what to do and they get the job done safely and efficiently. I appreciate being able to rely on these professional and very committed individuals who know what needs to be done before the Lab can be opened."

Says Michael Bebon, BNL Deputy Director for Operations, "I truly appreciate the work our snow removal team does. They are always faced with very adverse conditions, long hours, and physically demanding work. Their efforts this year to make the site safe for all of us has been remarkable. Even more noteworthy, despite the risks that are a part of this kind of work, they have done it all without an accident or injury."



Roger Stoutenburgh 01220105

Calendar of Laboratory Events

- The BERA Sales Office is located in Berkner Hall and is open weekdays from 9 a.m. to 3 p.m. For more information on BERA events, contact Andrea Dehler, Ext. 3347; or Chris Carter, Ext. 2873.
- Additional information for Hospitality Committee events can be found at the Recreation Bldg. and at the laundry, both located in the apartment area.
- Contact names are provided for most events for more information.
- Calendar events flagged with an asterisk (*) have an accompanying story in this week's Bulletin.

— EACH WEEK —

Weekdays: Free English for Speakers of Other Languages Classes

Beginner, Intermediate, and Advanced classes. Various times. All are welcome. Learn English, make friends. See www.bnl.gov/esol/schedule.html for schedule. Jen Lynch, Ext. 4894.

Mondays: BNL Gospel Choir

5:15-7 p.m. Berkner Hall. All faiths are welcome. www.bnl.gov/bera/activities/choir/.

Mondays & Wednesdays: Pilates

Mon., Noon-1 p.m. in the Rec. Hall; Wed., 5:30-6:30 p.m. in the Rec. Hall. Christine Carter, Ext. 5090.

Mondays & Wednesdays: Yoga

Noon-1 p.m., Brookhaven Center. Free. Ila Campbell, Ext. 2206, ila@bnl.gov.

Mon., Tues., & Thurs.: Kickboxing

\$5 per class. Mon., noon-1 p.m. in the gym; Tues., 5:15-6:15 p.m. in the gym; Thurs., noon-1 p.m. in the gym; Thurs., 5:15-6:15 p.m. in Brookhaven Ctr. North Room. Registration is required. Christine Carter, Ext. 5090.

Mon., Wed., & Fri.: Tai Chi

Noon-1 p.m., Brookhaven Center North Room. Adam Rusek, Ext. 5830 or rusek@bnl.gov.

Tuesdays: Welcome Coffee

10-11:30 a.m., Rec. Hall. First Tuesday of every month is special for Lab newcomers and leaving guests. Cindy Ottemann, 849-2646.

Tuesdays: BNL Music Club

Noon, North Room, Brookhaven Center. Come hear live music. Joe Vignola, Ext. 3846.

Tuesdays: Jiu Jitsu Club

6:30-7:30 p.m. in the gym. All levels, ages 6 and above. \$10 per class. Tom, Ext. 4556.

Tuesdays: Toastmasters

1st and 3rd Tuesday of each month, 5:30 p.m., Bldg. 463, room 160. Guests, visitors always welcome. www.bnl.gov/bera/activities/toastmasters/default.htm.

Tuesdays & Thursdays: Aerobics

5:15-6:30 p.m., \$5 per class or \$40 for ten classes. Rec. Hall. Pat Flood, Ext. 7886.

Tuesdays & Thursdays: Aqua Aerobics

5:15-6:15 p.m. Eight-week session. \$20 to attend once a week; \$40 to attend twice a week. Ext. 2873 for more information.

Tuesdays & Thursdays: Jazzercise

Noon-1 p.m., Rec. Hall. Preregistration is required. Christine Carter, Ext. 5090.

Tues., Thurs., Fri.: Upton Nursery School

8:30-11:30 a.m. Rec. Hall. Two- and three-day program avail. 727-8082 or Ext. 5090, for information.

Tues., Wed. & Thurs: Rec Hall Activities

5:30-9:30 p.m. General activities, large-screen TV, ping pong, chess, games, and socializing. Christine Carter, Ext. 5090.

Wednesdays: On-Site Play Group

10 a.m.-noon. Rec. Hall. An infant/toddler drop-in event. Parents meet while children play. Kati Petreczky, 821-4131.

Wednesdays: Weight Watchers

Noon-1 p.m. Michael Thorn, Ext. 8612.

Wednesdays: Open Chess Night

5-8 p.m., Rec. Hall. Christine Carter, Ext. 5090.

Wednesdays: Dance Lessons

5:15-8 p.m. Brookhaven Ctr., North Room. BNL Ballroom Dance Club hosts lessons, beginner to adv. John Millener, Ext. 3853.

Thursdays: Reiki Healing Class

Noon-1 p.m., Bldg. 211 Conference Rm. Nicole Bernholz, Ext. 2027.

*Thursdays: FreshDirect Delivery

3:30-5:30 p.m., Berkner Hall parking lot.

Fridays: Family Swim Night

5-8 p.m. at the BNL Pool. \$5 per family.

Fridays: BNL Social & Cultural Club

6-9 p.m., North Ballroom, Brookhaven Ctr., dance lessons, 9-11:30 p.m. general dancing. Rudy Alforque, Ext. 4733, rudy@bnl.gov.

— NEXT WEEK —

Tuesday, 2/8

*Valentine's Party

11 a.m.-1 p.m., Rec. Hall in the apartment area. The English for Speakers of Other Languages and the Hospitality Committee invite the Lab community to a Valentine's lunch-time party Join in Valentine card-making, contests, and chocolate-eating!

*Identity Theft Presentation

Noon-1 p.m., Berkner Hall. Talk by James Pascarella, Assistant District Attorney in the Economic Crimes Bureau, Suffolk County District Attorney's Identity Theft Unit. Michael Thorn, Ext. 8612, or mthorn@bnl.gov.

BNL's Abass Wessen Makes a Difference in His Community

Abass Wessen knows firsthand how hard it is to make improvements in the community that will enrich the lives of everyone in the neighborhood. A long-time BNL employee, who currently works as a project engineer in the Lab's Plant Engineering Division, Wessen has spent a lot of his free time working to improve the quality of life in his small community in North Bellport.

"My mother was a perfect role model," says Wessen. "She was always the first person to lend a hand to those in need. I remember that she often cooked extra food to share with neighbors so that no one would be hungry. She encouraged me to do whatever I could to help people."

So, in 1989, Wessen formed a group called "Concerned Citizens for a Better North Bellport." Their mission was to establish a venue where community members could voice concerns and ideas to local government officials. Says Wessen, "Our community was deteriorating due to problems relating to criminal activity, illegal dumping, loitering, and garbage removal. I knew I had to take steps to turn things around."

Together with the group, Wessen worked to establish relationships with elected officials in Suffolk County and the Town of Brookhaven. "Once we had their support, we hoped that they would help us address the local quality of life issues and the lack of affordable housing in the area," he explains.

The Concerned Citizens partnered with other local organizations, such as the Hagerman Alliance and the Long Island Partnership, to clean up the open space in

Abass Wessen was one of the many BNL employees who participated in the Volunteer Expo held on November 3, 2004, which was sponsored by BNL's Volunteers in Partnership Program (VIP) and supported by BSA. At that time, BNL volunteers introduced their organizations to the rest of the Lab. To learn more about VIP, contact Barbara Blenn, Ext. 4458 or blenn@bnl.gov.



Abass Wessen

Roger Stoutenburgh 00990105

Bellport and build affordable housing. They also worked with Brookhaven Town officials to refurbish a neighborhood park, the Robert Rowley Park, by building new basketball courts and installing security lighting. They also facilitated teenagers' employment and coordinated the Police Athletic League Youth Basketball Program. The organization even rallied to get North Bellport recognized as an economic enter-

prise zone to obtain federal and state funding such as tax credits, and financial incentives to entice new, small business owners to open shops in the area.

In another breakthrough, Wessen and his group were instrumental in getting the Suffolk County Police Department (SCPD) to establish a mini-precinct in North Bellport. In 1994, the Concerned Citizens went further and partnered with the SCPD and

the Town of Brookhaven to organize a neighborhood civilian patrol. Says Wessen, "We convinced Town of Brookhaven officials to donate a car with radio communication for our civilian patrol. The support of local elected officials and the SCPD has been phenomenal." Currently, there are six patrol members who actively recruit new members for both patrol and neighborhood watch.

The newest initiative for Concerned Citizens is the collaboration with the Bellport, Hagerman, East Patchogue Alliance, Inc. for North Bellport to be recognized as "Weed & Seed" site for federal funding. The purpose of the Weed & Seed Program is to develop and promote programs that help to "weed" out crime activity and "seed" the community with ideas focused on human services and neighborhood improvement initiatives, and promote better understanding among law enforcement and citizens of the community.

Among all the Concerned Citizens' achievements, however, one in particular stands out for Wessen — the negotiation of scholarship funds for local students. Wessen worked with the owners of the Bellport Tanger Outlet Center to establish a scholarship fund. Currently, four Bellport students are awarded scholarships to attend Suffolk County Community College each year.

Says Wessen, "Giving young people the opportunity to attend college makes all our hard work worthwhile, and it keeps me motivated toward making my community the best it can be. For me, it's just the right thing to do." — Jane Koropsak

BNL Scientists Named APS Fellows

(cont'd.)

Bruce G. Gibbard (cont'd.) insight into the fundamental nature of matter. He is also in charge of U.S. computing facilities for the ATLAS experiment at the Large Hadron Collider at CERN, the European center for particle physics research. When fully functioning in 2008, ATLAS will analyze its data using a worldwide computing grid, with the primary U.S. computing facility located at the Lab.

Alex Harris (cont'd.) Physics Research of AT&T Bell Laboratories in Murray Hill, New Jersey (later the Bell Laboratories research division of Lucent Technologies) and became head of the Materials Chemistry Research Department in 1996. In 2000, he joined Agere Systems, Allentown, Pennsylvania, as director of the Guided Wave & Electro-optics Research Department, and, in 2003, he joined BNL as Chemistry Department Chair. At the Lab,

Harris plans to continue his surface studies as part of the Surface Chemical Dynamics Group, which has recently been formed and is setting up initial experimental efforts.

Li-Hua Yu

(cont'd.)

This light reveals the fine details of atomic interactions inside materials and the very fast motions of molecules in chemical reactions, all with unsurpassed precision.

In 1984, Yu earned a Ph.D. in physics from Stony Brook University and joined BNL as a research associate. He rose to become a senior physicist in 2000. With BNL colleagues, Yu won an R&D 100 Award from *R&D Magazine* in 1989 for inventing the Real-Time Harmonic Closed-Orbit Feedback System, which stabilizes the orbit of electron beams in synchrotrons. In 2003, he won the Free Electron Laser (FEL) Prize sponsored by the International FEL Conference.

— Diane Greenberg

Pick a Summer Student

Student applications for the summer 2005 undergraduate science internship programs sponsored by DOE's Office of Workforce Development for Teachers & Scientists are now available for review on an electronic database. Contact Kathy Gurski of the Office of Educational Programs (OEP) at Ext. 4503 or gurski@bnl.gov for the database address and passwords.

Selections for the first round choices must be submitted by February 28. Students will be here for ten weeks, from June 6 to August 12. Stipends, housing, and travel are funded through OEP with a \$1,000 cost share requested from the hosting department. See www.bnl.gov/scied/ for more information.

Staller Center Musical Gala, 2/12

A gala program to benefit the Staller Center at Stony Brook University is scheduled for Saturday, February 12, at 8 p.m., featuring the Prague Symphony Orchestra, with guest artists Denyce Graves, mezzo-soprano, and Navah Perlman, piano.

For more information, go to www.staller.sunysb.edu/0405/gala.html. Tickets are available through the Box Office, 632-ARTS, or on line.

Retiree Health Care Benefits Meeting, 2/15

Health care benefits for BNL retirees will be the subject of a meeting held by the Human Resources & Occupational Medicine Division (HROM) at Berkner Hall on Tuesday, February 15, at 1:30 p.m., with a snow date of Thursday, February 17. Topics to be covered include: coordination of benefits with CIGNA and Medicare, out of network benefits, deductibles, the mail order drug program, change from PPO to OAP, which is only a change in networks, not in benefits; and dual coverage processing. All are invited to attend. The Brookhaven Retired Employees Association (BREA) will try to coordinate rides if anyone needs to be driven to the meeting. To provide a ride or ask for a ride, send e-mail to brea-l@lists.bnl.gov or telephone Joyce Tichler at 631-563-0989.

Reimbursement Account Deadline

According to the Internal Revenue Service, contributions to health care or dependent day care accounts not used by the end of the calendar year will be forfeited. So, do not forget to use up balances within all 2004 reimbursement accounts by claiming expenses incurred in 2004. Submit claim forms by March 31, 2005.

In Memoriam

Arnold Benson, who had joined the Building & Grounds Division as a clerk B on March 12, 1947, and, after 41 years of service, had left the Lab as General Supervisor for Building Maintenance in the Plant Engineering Division on July 31, 1988, died at age 80 on September 25, 2004.

Kenneth Robins, who had come to BNL on March 28, 1960, as a junior technician in the Alternating Gradient Synchrotron Department, and had retired as a physics associate I from the Relativistic Heavy Ion Project on September 30, 1993, died on November 10, 2004. He was 67.

Intel Finalist's Project Measures Charged Particle Production at PHENIX

Longwood High School senior Shan Yuan Huang, also known as Ben, had worked on his Intel Science Talent Search project for two years with Thomas Hemmick, a Stony Brook University physics professor and a collaborator at PHENIX, one of four major experiments at Brookhaven's Relativistic Heavy Ion Collider. All the long, hard hours were worth it, since Huang has been named one of the 40 finalists from 1,600 entrants to compete for the ten top prizes offered by Intel, including a \$100,000 scholarship.

"I developed a new technique to measure the number of charged particles in PHENIX," Huang said. "It's more accurate, easier and faster than the previous technique."

Hemmick explained that a single collision of two gold nuclei — roughly 400 particles — in PHENIX results in as many as 6,000 particles being produced. Previous PHENIX measurements were made using a simple detector with dual-layered chambers, but that proved to have limitations. Huang developed software for a new data-analysis method,

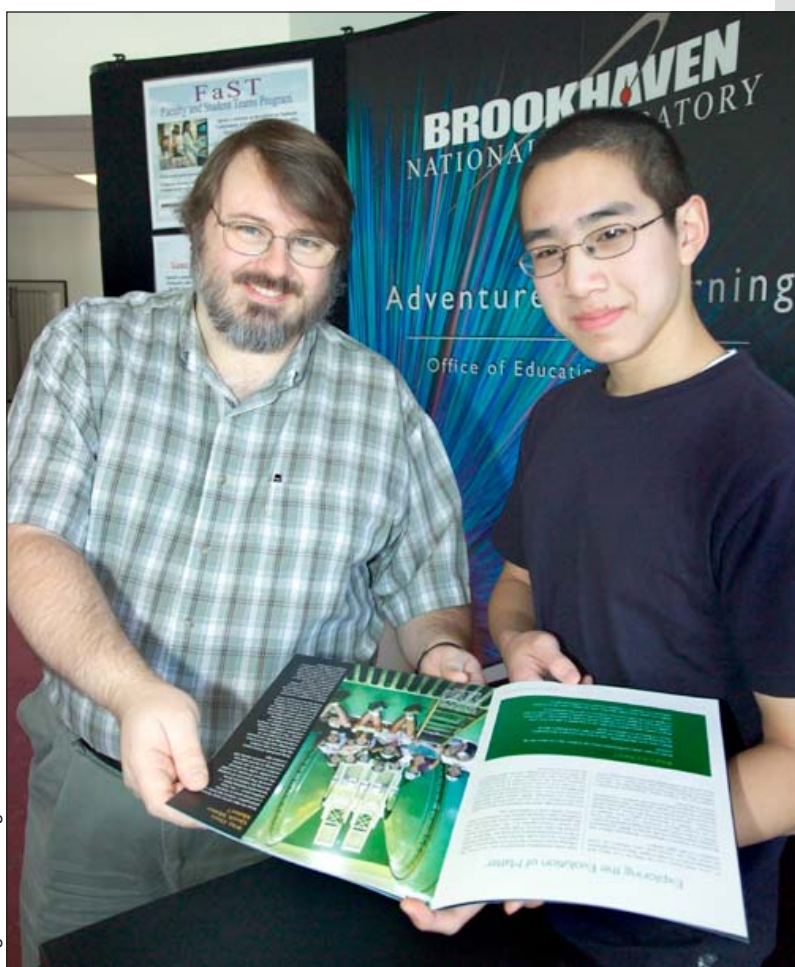
which uses PHENIX's multilayered drift chamber. In this new method, accuracy is improved by eliminating accidental combinations of unrelated hits.

Hemmick said that Huang worked with him to learn the computation skills to interpret data from PHENIX, a task that is well above high school level. "Also," said Hemmick, "Ben has excellent communications skills, which resulted in his submitting a very clearly written project to Intel, titled 'Charged Particle Production in High Energy Nuclear Collisions.'"

Huang is the captain of his school's varsity math and academic bowl teams. He was also a contestant on the Longwood High School team in BNL's Regional Science Bowl, held on January 29. Longwood won an honorable mention award as fourth-place winner in the contest.

On March 15, Huang will learn if he was selected as one of Intel's top ten winners. After that, he plans to go to Harvard University in the fall. He is still undecided about a major — perhaps mathematics or economics.

— Diane Greenberg



Thomas Hemmick (left) and Shan Yuan "Ben" Huang

BERA Basketball

The first "Basketball is Back" tournament, held on January 13, got off to a rousing start. More than 35 players participated in the first four-on-four tournament of the year.

The winning team, led by John Blydenburgh and consisting of Reggie Sanchez, Nick Kling, Tony Hammil, and Brian Boyle, went through the double elimination tournament undefeated. In the final round, they defeated a team consisting of Doug Aichroth, Al Boerner, Steve Jao, Troy Mayo, and Nick Capazzola by a final score of 7-6 on a lay-up by Reggie Sanchez.

The next scheduled basketball tournament will be held on Thursday, February 24. To participate, submit team members to Jim Desmond, desmond@bnl.gov, by Friday, February 18, in order to play. As always, individuals are welcome, just sign up and you will be assigned to a team.

Arrivals & Departures

Arrivals

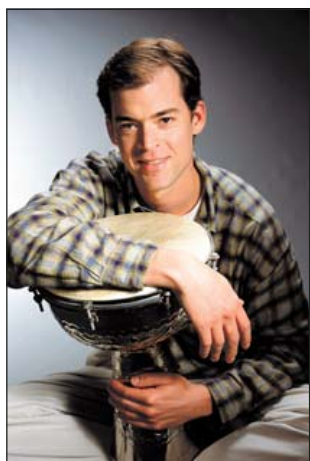
Giuseppe Camarda NNS
Frithjof Karsch Physics
Pavlos Kollias Environ. Sci.
Damodharan Lakshminarasimhan Biology

Departures

Suh-Urk Chung Physics
Fabian Essler Physics
Deborah Maresca HR/OM
John Piyis Medical
Brian Sheehy NSLS

Recital

BSA Noon Recital, 2/9



Joseph Gramley

Multi-percussionist Joseph Gramley will give the next BSA Noon Recital on Wednesday, February 9, in Berkner Hall. All are welcome to this free performance. Visitors to the Lab age 16 and over must bring a photo ID.

Gramley gave his concerto debut with the Houston Symphony Orchestra in 1992, after winning their National Soloist Competition. He toured with Yo-Yo Ma and the Silk Road Ensemble throughout North America, Europe and Asia, was featured on Late Night with David Letterman, and appeared with Elton John.

Tsunami Benefit Concert, 2/26

A benefit concert for the relief of the tsunami victims in south Asia will be held on Saturday, February 26, at 7 p.m. in Berkner Hall. Sponsored by the BNL Music Club, the concert will feature a wide variety of local musicians. All concert proceeds will be donated to the American Red Cross.

The performers will include Larry Hunter, veteran singer, songwriter and multi-instrumentalist, who is a member of the blues/rock band Great Caesar's Ghost; a Japanese drumming group, Ryu Shu Taiko, offering an exciting blend of martial arts, folk dance and drumming; teen songwriter and singer Caitlyn Amanda, accompanied on guitar by songwriter-arranger Henry Diaz, a BNL Music Group member; and the Chaparrals, a local high-energy rock band featuring two more Lab members: Joe Carbonaro, vocals and harmonica; and Michael Herbert, bass.

Tickets for the concert are available at the BERA Store at \$10 each for adults, \$5 each for children 12 years old or younger and for students with a student ID.

One-on-One Retirement Counseling

A TIAA-CREF consultant will visit BNL on Monday, February 7; Tuesday, February 8; Tuesday, February 15; and Wednesday, February 23; to answer employees' questions about their financial matters. Some sample topics might be:

- The importance of protecting your assets against inflation
- Finding the right allocation mix for you
- Learning about TIAA-CREF retirement income flexibility
- Comparing lifetime income vs. cash withdrawal options.

For an appointment, call Kathy Murphy, (866) 842-2053, Ext. 4625.

Wanted: BNL Science Fair Projects From the Past

The BNL Science Museum is looking for projects, presented on tri-fold boards, that kindergarten-through-sixth-grade students created in the past for BNL's annual science fair. Kathleen Nasta of the Museum will take the projects to display in an upcoming "Science Fair Help Day" at Longwood Public Library, to help other students get an idea of how to lay out new projects and what ideas have been done in the past. To lend your child's past project, call Nasta, Ext. 3926.

Valentine Parties

Tuesday, February 8, 11 a.m.

The English for Speakers of Other Languages and the Hospitality Committee invite the Lab community to a Valentine's lunchtime party at the Recreation Hall in the apartment area, Tuesday, February 8, 11 a.m.-1 p.m. Join in Valentine card-making, contests, and chocolate-eating!

Saturday, February 12, 5 p.m.

The Hospitality Committee invites BNLers of all ages to a Valentine's Soup & Dance Party at the Recreation Hall in the apartment area on Saturday, February 12, at 5 p.m. The committee will provide homemade soups, bread, and drinks. Bring a salad or dessert to share with six people. After dinner, a DJ will spin music for the whole family to dance to! For more information, contact Cindy Ottemann, cjottabb@optonline.net, 849-2646.

Daffodil Days

BERA will again be selling daffodils to benefit the American Cancer Society. A bunch of ten fresh cut flowers is \$10. Pick up your bouquet during the week of March 14. Paid reservations are being taken at the BERA Store in Berkner Hall, Monday-Friday, 9 a.m.-3 p.m.

Get to Know Your Lab: Weather or Not? 2/18

On February 18, the Employee Lunchtime Tour will visit BNL's neighbors, the National Weather Station, located on site. All are invited to meet at noon in the upper lobby of Berkner Hall, and Lab buses will transport you to the tour, returning to Berkner by 1 p.m. The group will see various instruments and discuss the way the weather is forecast using the Doppler Radar. For more information, call Elaine Lowenstein, Ext. 2400.

Travel & Exercise Talk, 2/25

Join Jennifer Gatz, exercise physiologist, on Friday, February 25, noon-1 p.m. in Berkner Hall, Room B, where she will present the Health Promotion Program-sponsored talk, "Travel and Exercise." The talk will focus on the benefits of different types of exercises, as well as descriptions and demonstrations of resistance bands, calisthenics, and simple stretches that can be done while seated on a plane or in the office. Preregistration is necessary for this talk. Check your mailbox for registration forms. For more information, contact Michael Thorn, Ext. 8612, or mthorn@bnl.gov.

Calendar

(continued)

Wednesday, 2/9

BSA Noon Recital

Noon, Berkner Hall. Joseph Gramley will perform multi-percussion. All are welcome to these free recitals sponsored by BSA. See notice below, left.

Saturday, 2/12

*Valentine's Party

5 p.m., Recreation Hall. All are welcome. See notice, left. Cindy Ottemann, cjottabb@optonline.net or 849-2646.

Hooch & the Bluesicians Concert

8 p.m., Berkner Hall. To be opened by Cadillac Moon. Sponsored by BNL Music Club. See notice, page 4. Tickets \$10 in adv., \$15 at door.

WEEK OF 2/14

Tuesday, 2/15

*Blood Drive

9:30 a.m.-3 p.m., Brookhaven Center. See important information on page 4. To make an appointment, contact Susan Foster at Ext. 2888 or e-mail donateblood@bnl.gov.

401st Brookhaven Lecture

4 p.m., Berkner Hall. Marcelo Vazquez, Medical Department, "Hazards of the Deep: Killing the Dragons — Neurobiological Consequences of Space Radiation Exposures." All are welcome.

— WEEK OF 2/21 —

Wednesday, 2/23

BWEN/BWIS Brown Bag Lunch

Noon-1 p.m. Location to be announced. All are welcome to join members of Brookhaven Women Engineers Network (BWEN) and Brookhaven Women in Science (BWIS) for a brown bag lunch for an open-discussion networking session. Coffee & cookies offered by BWIS.

BSA Noon Recital

Noon, Berkner Hall. Na-Young Baek and Yukiko Sekino, cello & piano.

Thursday, 2/24

Foot Screening by Appointment

9-11:50 a.m. Occ. Medicine Clinic, Bldg. 490. Podiatrists Ben Dimichino and Brian Fanno will discuss treatments for common foot-related complaints. A 3-D computerized scanner will be available for those who wear or feel that they may be a candidate for orthoses. Schedule appointments with Michael Thorn, Ext. 8612 or mthorn@bnl.gov.

Friday, 2/25

*Travel & Exercise Talk

Noon-1 p.m., Berkner Hall, Room B. See notice, below left. Michael Thorn, Ext. 8612, or mthorn@bnl.gov.

Sunday, 2/27

Spa Day at Gurney's Inn

8 a.m.-4 p.m. Spoil yourself or your significant other by attending BERA's spa day at Gurney's, which includes luxury bus transportation, luncheon, facial, massage, manicure, pedicure, use of all spa facilities, taxes, and gratuities. Cost: \$260. Christine Carter, Ext. 5090, ccarter@bnl.gov.

— WEEK OF 2/28 —

Saturday, 3/5

Bus Trip to Cradle of Aviation Museum

9 a.m.-5 p.m. \$15/adult, \$13/seniors and children. BERA-sponsored coach to Long Island's Cradle of Aviation Museum in Garden City. Tickets cover bus, museum, IMAX movie, and Mars Virtual Voyage ride. Buy tickets at the BERA Store. Also, see www.cradleofaviation.org.

— WEEK OF 3/7 —

Wednesday, 3/9

BSA Noon Recital 'Simply Gershwin'

Noon, Berkner Hall. All are welcome.

Note: This calendar is updated continuously and will appear in the Bulletin whenever space permits. Submissions must be received by the preceding Friday at noon to appear in the following week's Bulletin. Enter information for each event in the order listed above (date, event name, description, and cost) and send it to bulletin@bnl.gov. Write "Bulletin Calendar" in the subject line.

