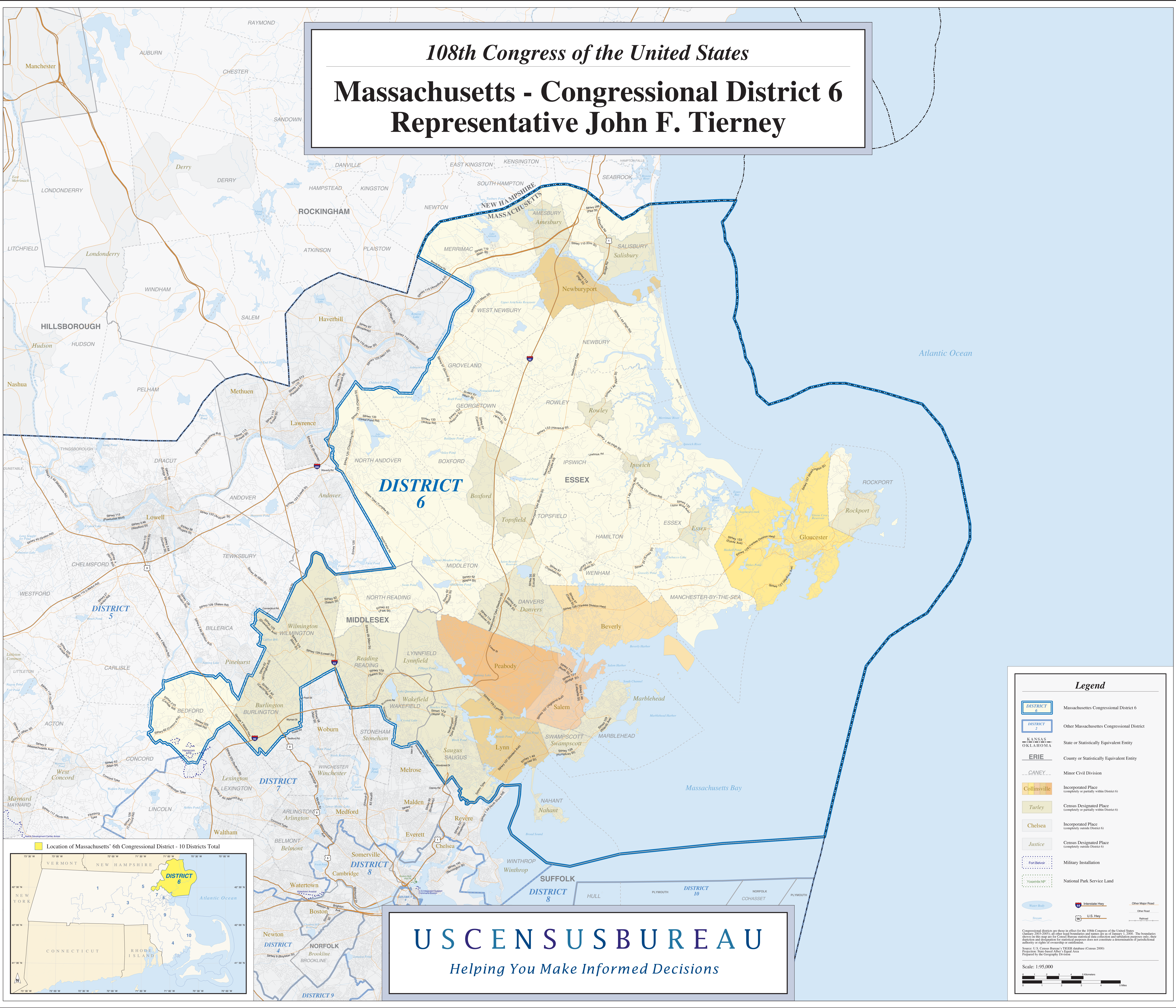


108th Congress of the United States

Massachusetts - Congressional District 6

Representative John F. Tierney



DISTRICT
6

USCENSUSBUREAU

Helping You Make Informed Decisions

Legend

- DISTRICT 6 Massachusetts Congressional District 6
- DISTRICT 2 Other Massachusetts Congressional District
- State or Statistically Equivalent Entity
- County or Statistically Equivalent Entity
- Minor Civil Division
- Collinsville Incorporated Place (completely or partially within District 6)
- Turley Census Designated Place (completely or partially outside District 6)
- Chelsea Incorporated Place (completely outside District 6)
- Justice Census Designated Place (completely outside District 6)
- Fort Belvoir Military Installation
- Yosemite NP National Park Service Land
- Interstate Hwy
- U.S. Hwy
- Other Major Road
- Other Road
- Railroad

Congressional districts are shown in effect for the 108th Congress of the United States (January 2005-2007) as of other legal boundaries and names as of January 1, 2003. The boundaries shown on this map are for Census Bureau statistical data collection and tabulation purposes only; their creation and designation for statistical purposes does not constitute a determination of jurisdictional authority or rights of ownership or control.

Source: U.S. Census Bureau, "2002 State-based Areas - Equal Area" Prepared by the Geography Division

Scale: 1:95,000

