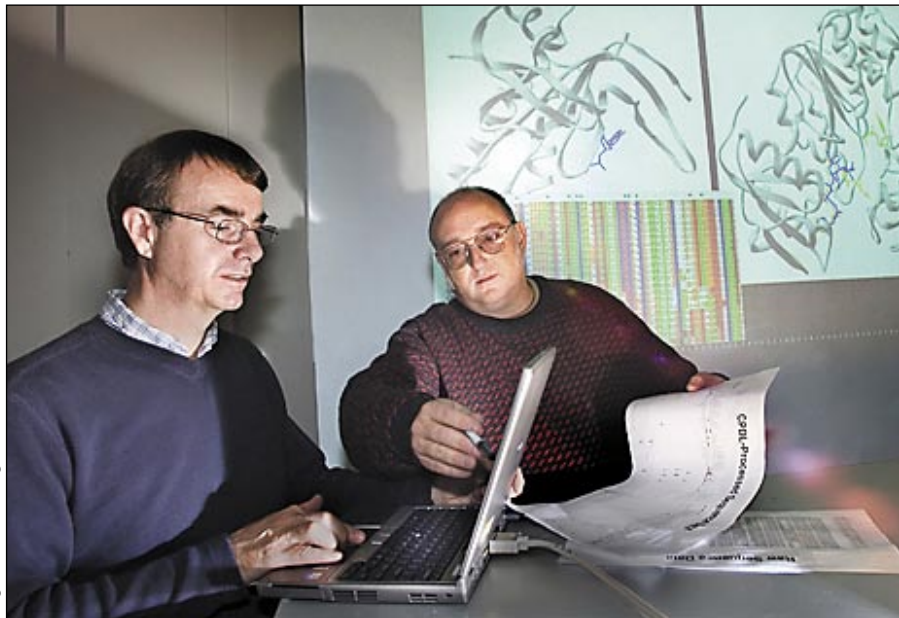


## Scientists Develop Protein-Sequence Analysis Tool

### Technique identifies candidate amino acid sites that control protein functions



Roger Stoutenburgh D4651105

John Shanklin (left) and Sean McCorkle, both of the Biology Department, examine amino acid positions (also projected on the screen) identified by the new "conserved property difference locator" program. Not present is Kim Mayer, Goldhaber Fellow.

With more and more protein sequence data available, scientists are increasingly looking for ways to extract the small subset of information that determines a protein's function. In addition to sorting out what makes related proteins differ, such information can also help scientists engineer proteins to do new jobs.

Now scientists at BNL have written a computer program "to sort the informational 'wheat' from the 'chaff,'" said John Shanklin of the Biology Department, who leads the research team including Brookhaven Goldhaber fellow Kim Mayer and Sean McCorkle, Biology. The program, which is described in the open access journal *BMC Bioinformatics* 2005, 6:280,

released on November 30, makes comparisons of groups of related proteins and flags individual amino acid positions that are likely to control function. The research was funded by the Office of Basic Energy Sciences within DOE's Office of Science, and by a Goldhaber Fellowship.

Biochemists are interested in identifying "active sites" — regions of proteins that determine their functions — and learning how these sites differ between paralogs, proteins that have different functions that arose from a common ancestor. The new program, called CPDL for "conserved property difference locator," identifies positions where two related groups of proteins differ either in

amino acid identity or in a property such as charge or polarity.

"Experience tells us that such positions are likely to be biologically important for defining the specific functions of the two protein classes," Shanklin said.

When the BNL team used the program to scan three test cases, each consisting of two groups of related but functionally different enzymes, the program consistently identified positions near enzyme active sites that had been previously predicted from structural and/or biochemical studies to be important for the enzymes' specificity and/or function.

"This suggests that CPDL will have broad utility for identifying amino acid residues likely to play a role in distinguishing protein classes," Shanklin commented.

Scientists have already used such comparative sequence analysis to identify protein active sites and have also used this knowledge to alter enzyme functions by switching particular amino acid residues from one class of enzyme to turn it into the related but functionally different class. But comparing sequences "manually" is labor-intensive, error-prone, and has become impractical for those who wish to take advantage of the increasing number of sequences in protein databases, Shanklin said.

"Yet this growing data resource contains a wealth of information for structure-function studies and for protein engineering," Shanklin said. "We developed CPDL as a general tool for extracting and displaying relevant functional information from such data sets." (continued on page 2)

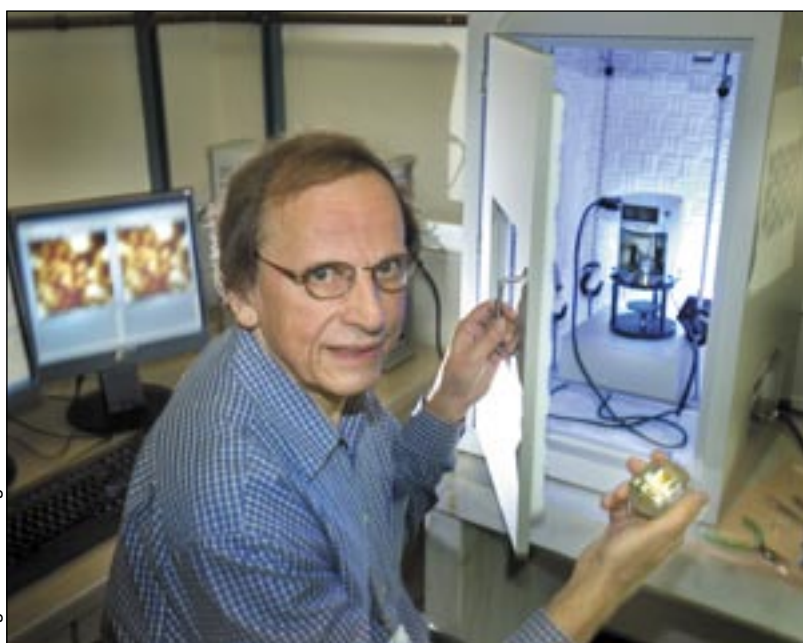
## Radoslav Adzic Elected a Fellow of The Electrochemical Society

Radoslav Adzic, a senior chemist in the Chemistry Department, has been named a Fellow of The Electrochemical Society, a 103-year-old professional organization with 8,000 members in over 75 countries. No more than three percent of members are given the distinction of Fellow. Adzic is among the 13 Fellows named in 2005.

Adzic was cited "For his outstanding contributions to fundamental aspects of electrocatalysis, underpotential deposition, and single crystal electrochemistry."

"I am honored to be elected a Fellow of The Electrochemical Society," said Adzic. "I've worked in the field of electrochemistry for my entire career, and I am gratified that my research has been recognized in this way, and, in particular, that the recent research at Brookhaven, which has the potential to make fuel cells more economical, has been noticed."

Funded by DOE's Office of Energy Efficiency & Renewable Energy, Adzic studies the correlation between structure and function at electrochemical surfaces using several techniques, including x-ray techniques at Brookhaven's National Synchrotron Light Source. Recently, Adzic has



Roger Stoutenburgh D0331005

focused on fuel-cell electrocatalysis, making efficient catalysts that may be used to convert hydrogen to electricity in fuel cells for electric vehicles. He also studies single crystals of materials in order to understand their structure. This basic structural knowledge of materials enables Adzic to use a process called adsorption, in which he deposits ultra-thin layers of metals onto metallic substrates, with the goal of changing the materials' chemical reaction rates in order to make more efficient electrocatalysts.

In fact, Adzic has made a significant breakthrough in fuel-cell electrocatalysis by designing the first platinum monolayer fuel-cell anode electrocatalyst. This novel catalyst consists of ruthenium nanoparticles

with a submonolayer of platinum. This new electrocatalyst has the potential to reduce the cost and increase the efficiency of fuel cells in electric vehicles, among other applications. He used this concept to design a platinum monolayer cathode electrocatalyst, which contains several times less platinum than commercial electrocatalysts.

Adzic earned a B.S. in chemical technology, in 1965, and a doctorate in chemistry, in 1974, both at the University of Belgrade. He remained at the university, eventually becoming a professor and Director of the Institute of Electrochemistry. In 1979, he came to Brookhaven as a visiting scientist, and in 1992, he joined the Laboratory as a senior research associate, rising to the position of chemist in 2001, and senior chemist in 2005.

Adzic's honors include election as correspondent member of the Serbian Academy of Sciences and Arts in 1993, and winning the Annual Award of Belgrade for Natural Sciences in 1983, the Medal of the Serbian Chemical Society in 1997, and Brookhaven Lab's Science & Technology Award in 2005.

— Diane Greenberg

## In Memoriam: Gerald Tape

Gerald Tape, former BNL Deputy Director; Associated Universities, Inc. (AUI), President; and U.S. Representative, with the rank of Ambassador, to the International Atomic Energy Agency (IAEA), died on November 20, 2005. He was 90.

Many of Tape's outstanding contributions were summed up in his citation for the Enrico Fermi Award, DOE's highest scientific honor, in 1987. Tape was honored "For a distinguished career in the administration, development and advancement of U.S. and international atomic energy, as well as contributions to the non-proliferation of nuclear weapons, with special recognition of his integrity."



After receiving his M.S. and Ph.D. in physics from the University of Michigan, in 1936 and 1940, respectively, Tape joined first Cornell University; then the Massachusetts Institute of Technology Radiation Laboratory, where he worked on radar technology; then the University of Illinois. He came to BNL in 1950 as an Assistant to the Director, Leland Haworth. He was BNL's Deputy Director 1951-62; then AUI President 1962-63 and 1969-80, during which time user facilities expanded at the Lab: ground was broken for the National Synchrotron Light Source in 1978; other facilities to be commissioned included the Tandem Van de Graaff accelerator in 1970, the Scanning Transmission Electron Microscope in 1975, and PETT III in 1977.

In April 1963, President John Kennedy named Tape as Commissioner of the Atomic Energy Commission, a position he held until 1969, when he resumed the AUI presidency. His service as U.S. Representative to the IAEA, 1973-77, was performed concurrently with his second term as AUI President.

As a member of the President's Science Advisory Committee, 1969-73, and as a science advisor to the White House's Office of Science & Technology, 1976-81, Tape made major contributions to U.S. science policy. On national security matters, he contributed as a member, 1970-74, and Chair, 1970-73, of the Defense Science Board; and as a National Security Council member, 1974-77. During his time at the IAEA, he was instrumental in the implementation of the Non-Proliferation Treaty. He was also a board member of Science Service, which manages high school science fairs and publishes *Science News*.

Among his honors, Tape received the Defense Department's Meritorious Civilian Service award, the National Science Foundation's Distinguished Public Service Award, and the Department of State Tribute of Appreciation. The Belgian Government awarded him the Order of Leopold II in 1979.

A resident of Bethesda, Maryland, Gerald Tape is survived by his wife of 66 years, Josephine; three sons, Walter, James, and Thomas and their families. A memorial service will be held at Maplewood Park Place, 9707 Old Georgetown Rd., Bethesda, on Monday, December 26 at 2 p.m. In lieu of flowers, a charitable donation is suggested. — Liz Seubert

## CALENDAR

### OF LABORATORY EVENTS

- The BERA Sales Office is located in Berkner Hall and is open weekdays from 9 a.m. to 3 p.m. For more information on BERA events, contact Andrea Dehler, Ext. 3347, or Christine Carter, Ext. 2873.
- Additional information for Hospitality Committee events may be found at the Lollipop House and the laundry in the apartment area.
- The Recreation Building (Rec. Hall) is located in the apartment area.
- Contact names are provided for most events for more information.
- Calendar events flagged with an asterisk (\*) have an accompanying story in this week's Bulletin.

### — EACH WEEK —

#### Weekdays: Free English for Speakers Of Other Languages Classes

Beginner, Intermediate, Advanced classes. Various times. All are welcome. Learn English, make friends. See [www.bnl.gov/esol/schedule.html](http://www.bnl.gov/esol/schedule.html) for schedule. Jen Lynch, Ext. 4894.

#### Mondays & Wednesdays: Pilates

Mondays at noon, Wednesdays at 5:30 p.m., both in Rec. Hall. 9-week session, \$60 for once a week, \$70 for twice a week. Registration is required. Christine Carter, Ext. 5090.

#### Mondays & Thursdays: Kickboxing

\$5 per class. Noon-1 p.m. in the gym. Registration is required. Christine Carter, Ext. 5090.

#### Mon., Wed., & Fri.: Tai Chi

Noon-1 p.m., Brookhaven Center North Rm. Adam Rusek, Ext. 5830, [rusek@bnl.gov](mailto:rusek@bnl.gov).

#### Tues. & Thurs: Aerobics

5:15-6:30 p.m., Rec. Hall. 10 classes for \$40, or \$5 per class, pay as you go. Pat Flood, Ext. 7866.

#### Tues. & Thurs: Aqua Aerobics

5:15-6:15 p.m. \$20 to attend once a week, \$40 to attend twice a week. For more information, call Ext. 2873.

#### Tues. & Thurs: Jazzercise

Noon-1 p.m., Rec. Hall. \$88 for twice-a-week eight-week session, you may use the membership at several Jazzercise locations. Christine, Ext. 5090.

#### Tue., Thu. & Fri: Upton Nursery School

8:30 a.m.-noon, Rec. Hall. 2- and 3-day programs available. Kati, 821-4131.

#### Tuesdays: Welcome Coffee

10 a.m.-noon, Rec. Hall. First Tuesday of every month is special for Lab newcomers and leaving guests. Lisa Yang, 979-3937.

#### Tuesdays: BNL Music Club

Noon, North Room, Brookhaven Center. Come hear live music. Joe Vignola, Ext. 3846.

#### Tuesdays: Jiu Jitsu Club

6:30-7:30 p.m. in the gym. All levels, ages 6 and above. \$10 per class. Tom, Ext. 4556.

#### Tuesdays: Toastmasters

1st and 3rd Tuesday of each month, 5:30 p.m., Bldg. 463, room 160. Guests, visitors always welcome. [www.bnl.gov/bera/activities/toastmasters/](http://www.bnl.gov/bera/activities/toastmasters/).

#### Tues., Wed. & Thurs: Rec Hall Activities

5:30-9:30 p.m. General activities, TV, ping pong, chess, games, socializing. Christine Carter, Ext. 5090.

#### Wednesdays: On-Site Play Group

10 a.m.-noon, Rec. Hall. An infant/toddler drop-in event. Parents meet while children play. Fang Dong, 871-5362.

#### Wednesdays: Weight Watchers

Noon-1 p.m. Michael Thorn, Ext. 8612.

#### Wednesdays: Yoga

Noon-1 p.m., B'haven Center. Free. Ila Campbell, Ext. 2206, [ila@bnl.gov](mailto:ila@bnl.gov).

#### Wednesdays: Ballroom Dance Class

\$30/pers./6-weeks. Brookhaven Center, N. Ballroom. Beginner rumba, 6 p.m., adv. foxtrot, 7 p.m. Instructor: Giny Rae. John Millener, Ext. 3853; Madeline Windsor, Ext. 5069.

#### Wed. & Fri.: Ving Tsun Kung Fu

Noon-1 p.m., Rec. Bldg. \$80/month or \$10 per class, pay as you go. Taught by Master William Moy. Scott Bradley, Ext. 5745 or [bradley@bnl.gov](mailto:bradley@bnl.gov).

#### Thursdays: Reiki Healing Class

Noon-1 p.m., Bldg. 211 Conference Rm. Nicole Bernholz, Ext. 2027.

#### Fridays: Family Swim Night

5-8 p.m. BNL Pool. \$5 per family.

#### Fridays: BNL Social & Cultural Club

6-9 p.m., North Ballroom, Brookhaven Ctr., dance lessons, 9-11:30 p.m. general dancing. Rudy Al-

## Submit Pollution Prevention Proposals — Deadline, 12/16

Do you have an idea that will reduce waste, conserve natural resources or energy, and save money? If so, then submit your idea to the BNL Pollution Prevention (P2) Council, coordinated by Peter Pohlot, Environmental & Waste Management Services Division. Each year, the council seeks ideas and proposals that will reduce waste, improve recycling or resource conservation, and save money.

Last year, 21 P2 proposals were submitted, of which 12 were funded. Examples from last year's funded proposals include the Collider-Accelerator Departments aerosol can disposal system, which safely punctures aerosol cans and captures any remaining contents, thereby rendering a hazardous waste into a recyclable component, and Biology's Photon Counting Spectrofluorometer, which replaces radioactive assays and avoids the annual generation of eight gallons of mixed waste.

As in the past, BSA will fund the P2 Program for FY06. If you have an idea for P2 funding, contact your environmental compliance representative or your department/division P2 council member (see <https://sbms.bnl.gov/ld/ld16/ld16d391.htm>) or visit the P2 web site, [www.bnl.gov/esd/pollutionpreve/](http://www.bnl.gov/esd/pollutionpreve/). For more information, contact Peter Pohlot, Ext. 5660 or [pohlot@bnl.gov](mailto:pohlot@bnl.gov).

**Peter Pohlot (left), BNL's Pollution Prevention (P2) Coordinator, has just finished demonstrating how to use a new aerosol can disposal system being introduced at the Lab, and now hands one over as the prize in an Environmental Management Systems raffle won by Bob Sabatini (right). Sabatini, ES&H Coordinator for Condensed Matter Physics & Material Science Department will use the system in his department. Remember,**



Roger Stoutenburg 10/23/05

## 'Lend a Helping Hand' to BNL's United Way Drive

### Next week: Holiday Auction, Yard Sale, 12/7 & 8

Next week, on Wednesday and Thursday, December 7 and 8, 11 a.m.-2 p.m., Berkner Hall lobby will be transformed by a dazzling display of shiny cellophane and ribbon that tie up dozens of baskets, each one containing combinations of useful, attractive, amazing, delicious, beautiful, intriguing items that might be yours for only a one-dollar raffle ticket!

To join in the fun, you purchase tickets, then wander around and choose which baskets you would like to win. Place a ticket (or two, or more) in the container in front of those baskets, and hope for the best. If you do not win, at least you know that your dollar will win a higher total for the 2005 BNL's United Way Fund Drive, since all the baskets are donated and all the proceeds will

### Other ways that BNLers can contribute to the success of the campaign include:

#### Volunteer Days Program, 11/15-12/31

In the Volunteer Days Program, BSA provides \$20 to the United Way campaign for every hour of employees' volunteer work, up to a ceiling of \$10,000. For more information about the many volunteer opportunities and to obtain forms, contact Maria Beckman, Ext. 5483, or Beth Blevins, Ext. 6033.

#### Holiday Auction, 12/7 & 12/8, 11 a.m.-2 p.m.

Berkner Hall lobby. Make a special effort to attend! To contribute baskets or help at the auction, contact Joanne Rula, Ext. 8481; Linda Sinatra, Ext. 6042; or Lois Caligiuri, Ext. 4397.

#### Yard Sale, 12/7 & 12/8, 11 a.m.-2 p.m.

Berkner Hall Lobby. Don't miss the bargains! To donate to the yard sale, contact Chris Johnson, Ext. 7636.

#### Used Book Sale, 12/7 & 12/8, 11 a.m.-2 p.m.

Berkner Hall Lobby. Treasure awaits. To donate gently used books to the sale, deliver them to Human Resources, Bldg. 185, as soon as possible before the sale.

#### Autographed Photos

Two autographed photos of Jets, Bobby Jackson and Islanders, Bob Nystrom. Tickets will be sold during the Holiday Auction.

#### 50/50 Raffle tickets, 12/7 & 12/8, 11 a.m.-2 p.m.

Tickets will be available for sale during the Holiday Auction in Berkner Hall lobby.

go to benefit the more than 175 large and small agencies that receive financial support from the United Way. In addition to the gleaming baskets, you can get even more bargains at the Yard Sale and Used Book Sale which will be held at the same time, same place. And someone will win the 50/50 raffle, also held at that time.

This year's drive began on November 2. Doon Gibbs, Associate Laboratory Director for Basic Energy Sciences (BES) Directorate, and Mary Campbell, BES, are this year's United Way Chair and Co-Chair. A pledge form has been sent to each employee; by completing and returning the form, contributors may donate a one-time gift or gift via payroll deduction over the span of 2006. Directions for donating are on the pledge form.



Joseph Rubino 11/07/2004

#### International Food Tasting, 12/9, noon-1:30 p.m.

Recreation Hall, Bldg. 317. Buy tickets at \$10 from Jennifer Lynch, Ext. 4894, or at the Holiday Auction. Ninety percent of proceeds will go to the United Way.

#### Holiday Gift Wrapping, 12/19-22, 11 a.m.-2 p.m.

Berkner Hall lobby. You shop, we'll wrap for you! For more information, contact Joanne Rula, Ext. 8481.

## Elder Law Talk, 12/15

Join Nancy Burner, former president of the Suffolk County Women's Bar Association and a member of the National Academy of Elder Law Attorneys, on Thursday, December 15, from noon to 1 p.m. in Berkner Hall, where she will present the elder law seminar "Long Term Insurance: What's New — Do I Need It?" Check your mailbox for registration forms. Return completed forms to Michael Thorn, Bldg. 490. Contact Thorn at Ext. 8612 or [mthorn@bnl.gov](mailto:mthorn@bnl.gov).

## Protein Sequence-Analysis Tool

(cont'd)

Also, since CPDL does not require that a protein's structure be known — just its amino acid sequence — it can be applied to studies of proteins that reside in the cell membrane, for which it is notoriously difficult to determine a molecular structure.

DOE's Office of Science was a founder of the Human Genome Project, a nationwide effort to generate the instrumentation and biological and computational resources necessary to sequence the entire human genome, identify all functional genes, and help transfer this informa-

tion and related technology to the private sector for the benefit of society (see [www.DOEgenomes.org](http://www.DOEgenomes.org)). Studies of proteins, the "workhorses" that carry out the instructions of the genome, are a natural outgrowth of this work, with the potential to harvest valuable returns of knowledge from basic research investments in genome sequencing.

— Karen McNulty Walsh  
See [www.biomedcentral.com/1471-2105/6/280/](http://www.biomedcentral.com/1471-2105/6/280/) to read the article by Kimberly M. Mayer, Sean R. McCorkle and John Shanklin; BMC Bioinformatics 2005, 6:280 (30 November 2005).

## Service Anniversaries

The following BNLers celebrated service anniversaries during July and August 2005.

### July 2005

— 45 Years —  
Arnold Aronson ..... ES&T

— 30 Years —  
Asher Etkin ..... C-A  
Peter Wanderer, Jr. .... Magnet  
Alvin Vestal, Jr. .... PPM  
Robert Doty ..... EENS  
Upendra Rohatgi ..... NNS

— 25 Years —  
Mark Fuhrmann ..... Env. Sci.  
Michael White ..... Chemistry  
David Siddons ..... Instrumentation  
Richard Wilke ..... Env. Sci.  
Dennis Reuter ..... Plant Eng.

— 20 Years —  
Lawrence Vogt ..... C-A  
Tracy Blydenburgh ..... S&H Svcs.  
Michiko Tanaka ..... ISD  
Leonard Pharr ..... NSLS  
Terry Jones ..... P&GA  
Eva Esposito ..... PPM  
Christopher Jung ..... Plant Eng.  
Isidro Garcia ..... PPM

— 10 Years —  
Elio Vescovo ..... NSLS  
Mark Lavery ..... C-A  
Kim Mohanty ..... Physics

### August 2005

— 30 Years —  
John Lehner ..... ES&T  
Stephen Schwartz ..... Env. Sci.

— 25 Years —  
Gloria Ramirez ..... NSLS  
Devinder Mahajan ..... ES&T  
John Benante ..... C-A  
Joseph D'Ambra ..... Magnet  
Susan Monteleone ..... ES&T  
Richard Casella ..... ITD  
Kathryn Folkers ..... Biology

— 20 Years —  
Lydia Rogers ..... NSLS  
Peter Esposito ..... HR&OM  
Henry Diaz ..... Physics  
Morris Bullock ..... Chemistry  
Erik Johnson ..... NSLS  
Ramiro Debbe ..... Physics  
Lewis Jackson ..... PPM  
Edward Sierra ..... QA  
James Hensch ..... SSD  
Lorraine Barry ..... HR&OM  
Robert Metz ..... Plant Eng.

— 10 Years —  
Frederick Putschauer ..... Env. Rest.  
Peggy Sutherland ..... QA  
Cheryll Christie ..... NNS

## Arrivals & Departures

— Arrivals —  
Susan Dwyer ..... Staff Svcs.  
David Yu ..... Physics

— Departures —  
Sanjee Abeytunge ..... C-A  
Vladimir Gratchev ..... Physics  
Vlado Lazarov ..... Biology  
Patricia Leone ..... Medical  
Patrick Moylan Jr. .... NSLS  
Cyril Pinto ..... ES  
Tae Joo Shin ..... NSLS  
Xianqin Wang ..... Chemistry  
Michael Wiplich ..... C-A  
Douglas Wood ..... Magnet

Winter weather is approaching.  
Unsure of BNL snow closings?  
Call 344-INFO.

## Message from Tim Green, BNL's Cultural and Natural Resource Manager

BNL is home to a variety of wildlife species. For most people, the presence of animals such as wild turkey, white-tailed deer, raccoons, and other wildlife is aesthetically pleasing. When they see wildlife, however, many humans try either to get closer to the animal or to coax it closer to them. Trying to get an animal to move closer usually involves enticing with food, which is often done repeatedly until the feeding becomes routine for the human and the acceptance becomes routine for the animal, which can become detrimental for both the human and the animal.

### Don't Mess With Nature

Humans must remember that these animals are wild and will use their instincts to survive. In feeding situations, this can involve an apparently docile animal turning aggressive toward the individual providing food, or the animal becoming a nuisance because it stays so that it will be assured of its next meal. This becomes evident when large numbers of animals begin to expect food. When large numbers of animals begin



Roger Stoulenburgh, DASCADA

to congregate it becomes unsafe and unhealthy for humans. This is seen repeatedly on site where well-intentioned individuals provide food for songbirds and attract large flocks of turkey and numerous deer.

### Abnormal Diet May Give Digestive Problems

Feeding becomes detrimental to animals when large numbers of them congregate to compete for a small amount of food and

that food is not in their normal diet. The wild animals found at BNL have evolved over thousands of years to eat a diet provided by nature. Supplementing the diet with lettuce, tomatoes, bread, and other processed human foods often results in digestive problems.

### Extra Food Goes Mainly to Strongest

Congregating animals also have a hierarchical system

that keeps the less dominant members on the outskirts of the group so that the stronger animals remain healthy and the less strong continue to be deprived of food. When animals rely on nature, they tend to move about to forage and most are able to find food. Congregating animals can also result in the spread of disease between individuals and potentially between animals and humans.

### Obey the Law — Do Not Feed Deer

Finally, in New York State, it is illegal to feed deer, and if, in the process of feeding other animals, deer are attracted, the feeding must stop. This includes something as simple as having a bird feeder that is used for feeding song birds. The illegal feeding of deer can result in significant fines and even time in jail.

So, please don't feed the wildlife: let them be wild. There are plenty of them around to enjoy and they really don't need your handout.

— Tim Green

### International Food Tasting Taste Homemade Culinary Cuisine From Around the World

Friday, December 9, noon-1:30 p.m.  
At the Recreation Hall, Bldg. 317, apartment area  
All are welcome.

Tickets are \$10, and the proceeds will benefit BNL's United Way campaign. To buy tickets, call Jennifer Lynch, Ext. 4894, lynch@bnl.gov. Tickets will also be sold at the lunchtime Holiday Auction in Berkner Hall, December 7 and 8.

### Bus Trip to NYC Decorations, 12/10

The Hospitality Committee invites BNLers to join a bus trip on Saturday, December 10, to see holiday decorations in New York City. The bus will leave from the Recreation Building in the apartment area at 9 a.m. and will leave the city at 5 p.m. The cost for adults is \$10, children 2-12, \$5. To make reservations, contact Monique de la Beij, 399-7656 or mdelabey@optonline.net. Payment must be made before the trip, at the Recreation Bldg. on Tuesday, 12/6, 10:30-11 a.m., or on Wednesday, 12/7, 10-10:30 a.m.

### Holiday Gala Ball, 12/9

Two BERA Clubs, the Social & Cultural Club and the Ballroom Dance Club, are sponsoring a Holiday Gala Ball on Friday, December 9, 7 p.m.-midnight, at the Brookhaven Center. A hot buffet will be served, 7-9 p.m.

Dancing starts at 7 p.m., and special performances will be given by "Dance Magic" with Dance Club members and Stony Brook University's student dance team. All are welcome at this public event. Visitors to the Lab of age 16 or over must carry a photo ID. Buy tickets, at \$25 each, at the BERA Store in Berkner Hall; or from Rudy Alforque, Ext. 4733; John Millener, Ext. 3853; Madeline Windsor, Ext. 5069; Donna Grabowski, Ext. 2720.

### On-Site Service Station News

#### Quicker Service for Unleaded Gas

Because regular unleaded gas is so much more in demand than plus, the on-site service station, Upton Industries, Inc., has doubled the dispensers pumping regular unleaded gas, and made plus no longer available. So, now, BNLers will be able to get unleaded regular gas from the two end dispensers, and unleaded super from the middle.

Says William Widmer, owner of the station, "We hope that this change will provide faster and more convenient service to more customers. We're going to try it for six months and we'll welcome any comments regarding this change."

### 'Learn to Be Tobacco Free'

#### Smoking Cessation Program at BNL

The Occupational Medicine Clinic's Health Promotion Program is sponsoring an on-site smoking cessation program, which is presented by the Suffolk County Department of Health Services and demonstrates a success rate of over 60 percent. The program consists of six Monday sessions from noon to 1 p.m., on January 23 & 30, February 6 & 27, March 6 & 13, and a one-month reunion on April 13. The location for these sessions will be announced. BNLers, their spouses, and family members are welcome to register. To register, or for more information, contact Michael Thorn, Ext. 8612, or mthorn@bnl.gov.

### BWIS Wine & Cheese Party, 12/7

All BNLers are invited to the Brookhaven Women in Science (BWIS) Wine & Cheese Party on Wednesday, December 7, at 5:15 p.m. in the Recreation Bldg. in the apartment area. BWIS holds this event annually to thank all who have helped with and supported BWIS programs, welcome new members, and introduce the new executive board to the Laboratory community.

Both men and women are welcome to join BWIS. The group's primary mission is to promote the advancement of women in the scientific professions. For more information, contact Stephanie LaMontagne-McKeon at Ext. 7141 or stephl@bnl.gov.

### Blues/Rock Concert at BNL, 12/3

#### Great Caesar's Ghost

#### And Featuring Little Toby Walker, G.E. Smith

Back at BNL by popular demand, the blues/rock band Great Caesar's Ghost will give a concert in Berkner Hall on Saturday, December 3, at 7:30 p.m. Acoustic blues guitarist Little Toby Walker will open the show, and former "Saturday Night Live" band leader G.E. Smith will also be featured on the program. Sponsored by the BNL Music Club, the concert is open to the public. All visitors to the Laboratory age 16 and over must bring a photo ID.

Buy tickets for the show at \$20 each at the BERA Store, weekdays, 9 a.m.-3 p.m., or through [www.ticketweb.com](http://www.ticketweb.com).

### Buy Science-Based Gifts

#### Fridays at BNL's Science Learning Center

The BNL Science Learning Center store in Bldg. 935, on the corner of East Fifth Avenue and Railroad Street, will be open for the holiday season on Fridays, 11:30 a.m.-1 p.m., and will stock a variety of science-based gifts for the whole family. The Science Learning Center is the new name chosen to express more accurately the focus and mission of what used to be BNL's Science Museum, which has always been a center of science education. Visit to shop and, at the same time, try out a new exhibit: a stringless harp.

### TIAA-CREF One-on-One Retirement Counseling

A TIAA-CREF consultant will visit BNL on Wednesday, 12/14; Tuesday, 12/20; and Wednesday, 12/21; to answer employees' questions about financial matters. The consultant will help you to understand the importance of protecting your assets against inflation, find the right allocation mix for you, learn about TIAA-CREF retirement income flexibility, and compare lifetime income vs. cash withdrawal options. For an appointment, call Kathy Murphy, (866) 842-2053, Ext. 4625. (Not the on-site Ext 4625.)

### Blood-Pressure Check, 12/6

Stop by Berkner Hall on Tuesday, December 6, 11:30 a.m.-1 p.m., to get a blood pressure check, sponsored by BNL's Health Promotion Program (HPP). At the same time, meet Nancy Losinno, Employee Assistance Program (EAP) Manager, pick up holiday stress-buster literature, and find out about upcoming HPP/EAP programs in January that may help you keep those New Year's Resolutions!

### Wanted: All Kinds of Used Books, for Resale

Gently used books of all kinds are being collected for resale at the United Way Holiday Auction to be held 12/7 and 12/8, 11 a.m.-2 p.m. To donate books, bring them to Human Resources, Bldg. 185. Soft covers will sell at \$.50, hard covers at \$1.

## CALENDAR (continued)

### — THIS WEEKEND —

#### Saturday, 12/3

**\*Great Caesar's Ghost Concert**  
7:30 p.m. Berkner Hall. Blues/Rock concert. With Little Toby Walker and G.E. Smith also featured. All are welcome. Tickets, \$20 each, at BERA Store. See notice below, left.

#### Sunday, 12/4

**\*BERA Bus Trip to New York City**  
9 a.m. Brookhaven Center. Bus leaves for NYC. Tickets are \$10 each. Buy at the BERA Store, Berkner Hall.

### — WEEK OF 12/5 —

#### Monday, 12/5

**BSA Talk About Google Scholar**  
11 a.m. Berkner Hall. Anurag Acharya, Distinguished Engineer at Google, will talk on "Searching Scholarly Literature: A Google Scholar Perspective." All are welcome at this free, BSA-sponsored talk, open to the public.

#### Friday, 12/9

**ALIO Industries Demo**  
10 a.m.-2 p.m., Berkner Hall. ALIO representatives will present BNLers with information on their nano-resolution parallel and serial kinematic atmospheric, HV and UHV robots, including hexapods, tripods, linear, rotary and goniometric stages. Dan Crews, 303-339-7500.

#### Cycletrons Holiday Party

Join the Cycletrons, BNL's Motorcycle Club, at 5:30 p.m. at Peanuts, Main St., Yaphank. \$10 per person includes hot buffet, cash bar. RSVP to [soja@bnl.gov](mailto:soja@bnl.gov). For more information, contact Frank Dusek, Ext. 2022.

### — WEEK OF 12/12 —

#### Wednesday, 12/14

**BSA Noon Recital, Bassoon & Cello**  
Noon. Berkner Hall. Stony Brook professor and composer Peter Winkler and bassoonist Gili Sharet perform music by Winkler, Mozart, and Astor Piazzolla.

#### Thursday, 12/15

**Choice Distribution Demo**  
10 a.m.-3 p.m., Berkner Hall. Representatives from Choice Distribution of West Babylon will present BNLers with discounted rates on industrial hardware and consumable MRO products, including nuts, bolts, drill bits, screws, cutting tools, anchors, and more. Glenn Rones, 756-0120.

#### Friday, 12/16

**BERA Holiday Party**  
7 p.m.-midnight. Three Village Inn, Stony Brook. \$50/person includes open bar, reception, dinner buffet, dessert, and dancing to a DJ. Ticket purchase deadline is 12/8, buy at the BERA Store, Berkner Hall.

#### Sunday, 12/18

**Hospitality, APAA Potluck Party**  
5 p.m. Recreation Hall. All are invited. Meats, pies, drinks provided. Bring a dish to share with six people. Santa will visit at 5:30 p.m. with gifts for children. Lisa Yang, 878-3937.

### — WEEK OF 12/19 —

#### Wednesday, 12/21

**410th Brookhaven Lecture**  
4 p.m. Berkner Hall. Peter Steinberg, Chemistry Department, will talk on "A Brief Dip into the Sea of RHIC Physics." All are welcome.

*Note: This calendar is updated continuously and will appear in the Bulletin whenever space permits. Submissions must be received by the preceding Friday at noon to appear in the following week's Bulletin. Enter information for each event in the order listed above (date, event name, description, and cost) and send it to [bulletin@bnl.gov](mailto:bulletin@bnl.gov). Write "Bulletin Calendar" in the subject line.*

## Classified Advertisements

### Placement Notices

The Lab's placement policy is to select the best-qualified candidate for an available position. Candidates are considered in the following order: (1) present benefits-eligible employees within the department/division and/or appropriate bargaining unit, with preference for those within the immediate work group; (2) present benefits-eligible employees within the Laboratory; and (3) outside applicants. In keeping with the Affirmative Action Plan, selections are made without regard to age, race, color, religion, national origin, sex, disability or veteran status. Each week, the Human Resources Division lists new placement notices, first, so employees may request consideration for themselves, and, second, for open recruitment. Because of the priority policy stated above, each listing does not necessarily represent an opportunity for all people. Except when operational needs require otherwise, positions will be open for one week after publication. For more information, contact the Employment Manager, Ext. 2882. Access current job openings on the World Wide

The following positions have been exempted from the freeze by the Deputy Director:

### LABORATORY RECRUITMENT – Opportunities for Laboratory employees.

**TB3725. SR. ADMINISTRATIVE SECRETARY (A-3, reposting)** - Requires an AAS degree in secretarial science or equivalent experience of at least six years that includes at least two years at BNL. Must possess a thorough working knowledge of Laboratory and Department policies and procedures relative to the department, excellent oral and written communication skills, must exercise initiative, good judgment, be a team player and must be proficient processing information using a PC. Responsibilities will include the effective operation and management of the Advanced Nuclear Concepts Group and Social Projects, and provide support to the Division Office, including the coordination and direction of all administrative office practices, policies, and procedures, arranging and processing domestic and foreign travel and maintain group files. Responsibilities will also include interacting with personnel both inside and outside the laboratory to coordinate and plan conferences and meetings both on site and off site in addition to arranging appointments, services, visitor paperwork, general information, preparation of reports and presentations, handle multiple assignments and plan and coordinate priorities. Position may be part time or full-time – to be determined. Energy Sciences & Technology Department.

**TB3671. ADMINISTRATIVE SERVICES ASSISTANT (A-2, reposting)** - Requires a minimum of an AAS in business or another relevant field, some specialized training in business or management and three years' directly related experience. Strong organizational and interpersonal skills are also required, as are excellent skills with MS Office and equivalent software. Specific experience with Peoplesoft and web design, and knowledge of BNL policies practices and procedures are desirable. Will work with minimal supervision as the assistant for the Macromolecular Crystallography Research Resource, operating at the NSLS. Primary responsibilities include the organization of a major annual international data-collection course and other program-related courses and conferences, handling of purchasing and accompanying record-keeping for this group of two dozen employees, occasional communication with outside users, assembling scientific progress reports, responding to internal and external requests for data, and tracking of commitments. Biology Department.

### OPEN RECRUITMENT – Opportunities for Laboratory employees and outside candidates.

**TB3785. SR. BUYER (A-6)** - Requires a bachelor's degree in business or an equivalent degree, four years' related experience, and working knowledge of Federal Acquisition Regulations, Uniform Commercial Code, Walsh Healey, and the Buy American Act. Must be well versed in all aspects of cradle-to-grave procurement, including pre- and post-award activities, i.e., preparing solicitations; evaluating prospective subcontractors' quotes, bids and proposals; analyzing cost and price proposals; negotiating; and awarding purchase orders and contracts, change orders and modifications. Experience in purchasing goods and services in a government-purchasing environment is highly desirable. Under general supervision, will be responsible for the economical and efficient procurement of a variety of goods and services in a high volume environment. Procurement & Property Management Division.

### Motor Vehicles & Supplies

06 EQUIPMENT TRAILER - brand new, Down to Earth, 5 ton, 18' \$3,000. 727-6714.  
04 CADILLAC CTS SEDAN - all pwr, loaded, 4 dr., v6 3.6i eng. gar., 20K mi. \$23,000/neg. 807-7801 or 924-0663 x4.  
00 MAZDA MILLENIA - a/t, a/c, p/s, p/b, abs, p/w, loaded, pwr. m/roof, heated seats, 92K mi. \$8,000. Ext. 3202 or 790-3377.

### Roll Up Your Sleeve: Blood Drive, 12/15

To replenish Long Island's blood supply, BNL is holding a blood drive on Thursday, December 15, from 9:30 a.m. to 3 p.m. in the Brookhaven Center. Donors must be from 16 to 75 years of age, in good health, and weighing over 110 lbs. Restrictions may apply to individuals from the United Kingdom and Europe. Donors should have photo identification and know their social security number.

To make an appointment, contact Susan Foster at Ext. 2888 or e-mail [donateblood@bnl.gov](mailto:donateblood@bnl.gov). In your message, include your name, phone extension, and preferred time to donate.



Joseph Rubino CNA-108-01

98 FORD TAURUS - dual airbags, p/l, p/s, p/w, a/c, c/c, abs, am/fm/cass, 4dr., 86K mi. \$4,500/neg. Ext. 1001 or [afischer@bnl.gov](mailto:afischer@bnl.gov).

96 VW JETTA TREK - Black, 4-cyl., 4-dr., a/t, CD. New exhaust, starter, brakes. 96K mi. \$3,000/neg. Pam, 828-2762.

95 GMC YUKON - 4x4, 1 owner, well maint., garaged, v. clean, leather, CD, all pwr., great in snow. 152K mi. \$4,500/neg. 874-9073.

95 FORD WINDSTAR - van, 6-cyl., a/t, a/c, high hwy. miles. 198K mi. \$1,700/neg. 821-2652.

94 PONTIAC FIREBIRD - excel. cond., 6-cyl. T tops, new stereo, batt. & tires. 101K mi. \$2,000. Mark, Ext. 2238 or 828-6459.

85 TOYOTA CAMRY - 4 dr., v.gd. cond., runs well. 229K mi. \$500/neg. 965-0344.

CARGO CARRIER - Hitch-mounted (not a trailer) requires 2-inch hitch, has wooden slat sides, ask \$100. David, Ext. 7277.

MOTORCYCLE - 94 Suzuki 125 cc, starter bike, 3K, runs well, \$650/neg; 99 Toyota Avalon XLS, 4 dr., 78K. 473-8716.

RIMS - chrome, 18", 5 lugs, needs a new tire. \$600 obo. Ext. 7692 or 445-4027.

SNOW PLOW - 7.5 Meyers plow, power angle, excel. cond., ask \$1,700. 286-1467 or 872-8333.

TRAVEL TRAILER - 90, 32' Wilderness Cimmaron 5th whl, fr. LR, rear q.bed, new fridge/tires, gas/elec, more. \$7,000. 775-6803.

### Furnishings & Appliances

BATHTUB - Kohler, Devonshire model, 60x32x20, white, R/H drain, brand new in box, \$220. Steve, Ext. 4211 or 286-3691.

BED - Q, med. oak head/ft.brd., \$150; matching triple dresser w/lighted hutch, \$150; upright freezer, \$75. 878-3935.

BED ROOM SET - Captain's bed & head board, in good shape, \$35. 924-8143.

BEDROOM SET - 7-pc., ask. \$400. Albert, Ext. 3083.

BEDROOM SET - girls', whitewashed wicker, twin headboard, dresser, mirror, nightstand, excel. cond. \$200 obo. 941-3490.

COUCH - 3-pc walnut, oval glass top coffee table, gd. cond., b/o. JoAnn, 924-4147.

STEREO STAND - O'Sullivan stereo unit, 5 shelves w/glass doors/wheels. Measures 23w, 44h, 16d. Great cond. \$40. Ext. 7459.

WALL OVEN - Whirlpool 27", brand new, elec. digital, used 5 times, bought for \$950, ask. \$200, moving, must sell. 736-7942.

### Sports, Hobbies & Pets

DOG FOR ADOPTION - pure-bred 5-yr-old male German Shepherd, well trained, good w/kids & dogs. 765-4944.

ELECTRONIC GAMES - hand-held, batt. op., b/ball, ftball., hcky., soccr., Space Invaders, Donkey Kong, \$2 ea. Peter, Ext. 2913.

ISLANDER TICKETS - select games avail. at discount, sec. 205 row E, face value \$120, your cost \$81 per ticket. 698-3543.

PIANO - Gulbransen upright, needs some work. \$1,200. Nancy, 821-2652.

TRAMPOLINE - 13 ft. w/enclosure, 3 years old, \$150. John, Ext. 4028.

### Tools, House & Garden

POWER SHOVEL PLUS - Toro. Elec., like new. Converts from snow thrower to power broom. \$95. Chris, Ext. 2024 or 395-6112.

### Audio, Video & Computer

ELECTRONIC ORGANIZERS - Sharp YO-380, 256KB, new in box, w/manual, \$10; Casio SF-5300B, 64KB, \$3. Peter, Ext. 2913.

EPSON PHOTO PRINTER - makes 13x19 prints, color 3/4 full, blk ink 1/2 full, unused cl. ink \$30, ask \$200 mid-range. 368-0452.

HARD DISK - 29 GB hard disk for desktop computer. \$15. Ext. 3525.

MONITOR - 19" COMPAQ mv900, \$50. Minghui, Ext. 3747.

MONITOR - 19" Compaq, MV920 CRT, \$75; Sony Playstation II, hardly used, \$75. 878-3935.

PRINTER - Xerox all-in-one WorkCentre M940 copier, printer, scanner, fax, Serial & USB interfaces, more, \$50. 265-3982 eves.

### Miscellaneous

GOLD CHARM - 14K gold, approx. 1" diameter, "Someone Special," orig. \$75, ask \$25. Cheryl, Ext. 2852.

MATTRESSES - king, queen & twin bunk, not used, \$50 ea. Mary, 928-5185.

MINI MOTORCYCLE - Honda MiniMoto SportRacer 18v rechargeable, still in box, 10 mph, \$200+ new, ask \$150. Ext. 3050.

SNOW VILLAGE - Dept. 56, 15 houses, 33 accessories, all orig. boxes. 874-3145.

STAIR GLIDER - elec. chair lift for steps 5 & 6. works excel., pd. \$2,500, ask. \$500 for 5-step, \$900 for 6-step. Tony, 736-7942.

TANNING BEDS - 4, great for home, Phenix Sun 24 & Phenix Sun 28/4/face tanners, great cond., \$1,000/ea obo. 924-0139.

WATCH BATTERIES - starting at \$7. 325-8434.

### Free

CAT - loving female, spayed w/all shots, jet black, green eyes. 3 yrs. old (small), playful, needs home, attention. 516-476-6880.

DESK - gray metal office desk, 30" x 60", 5 drawers and file drawer. Ext. 7263.

RECORDS - a few hundred LPs and 45s, you pick up, Nassau/Suffolk border. Sharon, 591-4071.

### Wanted

PLAYSTATION 2 - or similar game, used but good, for the holidays. John, Ext. 4028.

### For Rent

EAST PATCHOGUE - 1-bdrm. apt., utilities & cable incl., no smkg./pets, walk to town/stores, 1 person pref. \$800/mo. 475-9093.

MANORVILLE - legal 1-bdrm. apt., lg. l/r, closet space, quiet, pvt., main flr., heat, elec. & cable incl. \$1,000/mo. 878-8967.

MASTIC BEACH - 4-bdrm ranch, new paint, carpet, tile, close to water, quiet street. \$1,500/mo. Ext. 7658 or 654-5607.

MASTIC/MANOR PARK - 2-bdrm, 1st-flr. apt. Pvt ent., sep thermostat, use of yard. Eastport-South Manor schools. Close to all. \$1,300/mo. Ext. 5154 or 707-2549.

MATTITUCK - 1 bdrm. apt. on the water, lg. bdrm. & den, lg. l/r/kit combo, 1 pers. rental, no smkg./pets. \$950/mo. 298-5625.

NORTH SHIRLEY - 1 bdrm., l/r kit. combo, full bath, pvt. ent., all util + basic cable, grd. lvl., no smkg./pets, 5 min. to BNL, avail. immed., 1 mon. sec. \$900/mo. 680-6796.

ROCKY POINT - 1 sm. bdrm. apt., priv., heat incl., no pet, 15 min. to BNL. \$850/mo. Trudy, 821-8730.

SOUND BEACH - 1 bdrm, 1 bath, cute and cozy home, new paint, w/d, close to beach, Lab, and SBU, pets okay. \$950/mo. John or Pete, Ext. 4028.

WADING RIVER - furnished or unfurnished 1-bdrm apt. w/office, living room, eik & bath, pvt. ent. & pkg., no smkg./pets., avail. immed., 1 mo. sec. \$1,200/mo. 929-5575.

YAPHANK - studio apt, fully furn., 1 person, priv. ent., 4 mi. to BNL, cable, DSL, all incl. \$800/mo. Camelia, 924-3049.

### For Sale

RONKONKOMA - Lake Hills, single fam., 7-rm. Colonial, 4 bdrms., 2 full baths +1/2 bath, oil, hw heating, a/c, 3 School Dist, Connetquot, mint. \$350,000 737-0556.

WADING RIVER - 9-rm. Colonial, lg. center hall, 5 bdrm, 2.5 bath, full bsmt., t/p, 2-car gar., lgp, lgs, landscaped, SWR SD, owner motivated. \$589,999/neg. Ext. 7459.

### In Appreciation

We want to express our appreciation for your prayers, support, and thoughtfulness throughout Guy Mastrion's illness and after his passing. He was truly blessed through many friendships at BNL. — Millie Mastrion and Family

Thank you to all who participated in the fundraiser event for The Abundant of Joy Ministry. Also, congratulations to the BNL employees who won prizes. — Tiffany and Louvania Minter

### On-Site Service Station

TIP OF THE MONTH: As cold weather approaches, batteries are subject to failure. An original battery in a 2001 or older vehicle may need to be changed. If you are not sure, have your battery tested at the on-site station. Should you need a new one, the station carries a complete line of Delco

## Help Feed Long Island Families Food Donations Very Much Needed

*John S. lost his job and can no longer pay his medical insurance premiums. He has been unable to find work to support his family. In addition, he has a sick child who requires regular medication. At least, he is able to feed his family by using the Brookhaven Town Interface Program.*

This is a fictional example of a person who needs practical help to get through a bad period. Many true examples exist.

The Lab, in partnership with the American Physical Society (APS), has been participating in the Town of Brookhaven's Interface program for almost 18 years. The Interface Program collects food donations from local corporations and organizations, and then delivers the food to Long Island charities, where it is then distributed to local families who are unable to buy food.

Says Rita Kito, Co-Chair of the Lab's Food Drive Committee, "In the past, Lab and APS employees have been extraordinarily generous. However, we are experiencing a decline in donations over the past few months. The holiday season is very difficult for those in need, and we would appreciate any contributions that employees can make to help feed Long Island families."

Most buildings on the Lab's site have a food donation bin where employees can drop off non-perishable food items. Each month the BNL volunteers deliver the donated food items from each of the BNL collection bins to Building T87. Then, representatives from the local charity organization pick up the food and distribute it to families in need.

Donations can be made at building drop-off points, or, if you prefer, you can donate money that will be used to buy food. Send your check, made payable to BNL Food Drive, to Rita Kito, Bldg. 460, or Donna Wadman, Bldg. 120. For further information on the food drive, call Kito at Ext. 3320 or Wadman at Ext. 2542. — Jane Koropsak



Roger Stoutenburgh 02031105

Pictured with Diane Romano (fourth from right) and Margaret Antonucci (third from right), two local food donation charity volunteers, are the Brookhaven Lab employees who help make the BNL food drive work: (from left) Beth Blevins, Gail O'Hern, Raymond Dumont, Frank Kito, Rita Kito, Maria Beckman, Swapna Mukherji, Paul Sparrow, Jerome Quigley (kneeling), Michel Perrier, and Donna Wadman. Missing from photo: James Anselmini, Jack Barry, Marion Blennau, Robert Kiss, James Bullis, Mindy Markstaller, Tiffany Minter, Terry Jones, Toni Hoffman, Susan Montealeone, Barbara Simpson, Ann Marie Luhrs, Paula Pozzoli, Amber Melosi, Diana Votruba, and Bruce Weatherell.



Led by Barbara Maddaloni (second row, second right), are employees from American Physical Society who partner with BNL in helping to make the food drive work. Front row, kneeling, from left: Chrissy Rupolo, Sharon Lensky, and Maria Asaro. Standing, from left: Nancy Jeans, Gina Van Schaick, Liz Siddons, Jill Gargano, Matt Eager, Marie Rupolo, and Mary Ann Kirchner. Missing from photo: Michele Hake, Kathy Occhino, Jeanne Scicutella, and Jane Throwe.