

STATE PREVENTION SYSTEM

Structure and Organization

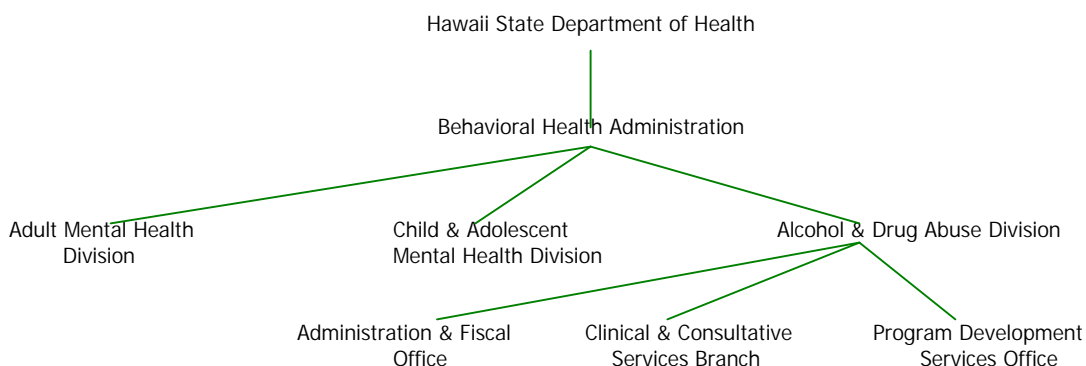
The Alcohol and Drug Abuse Division (ADAD) of the Hawaii State Department of Health is the single state agency designated to receive Substance Abuse Prevention and Treatment (SAPT) Block Grant funds. ADAD is one of three divisions comprising the Behavioral Health Administration, which is under the administration of a Deputy Director of Health. The Deputy Director of Health reports directly to the Director of Health. Within ADAD prevention functions are carried out by the Clinical and Consultative Services Branch, Program Development Services Office, and the Administrative Services Office, with direction received from the Division Chief.

Two prevention program specialist positions, one funded with SAPT funds, are situated within ADAD's Program Development Services Office (PDSO). This Office is responsible for planning, implementation, evaluation, and quality assurance of State and Federally funded public and private programs in Hawaii concerned with the prevention, education, and research activities relating to substance abuse. PDSO staff oversee the State's compliance with tobacco sales to minors laws, implement underage drinking projects, develop and conduct prevention training, jointly plan prevention programs with other State agencies, research effective programs and strategies, prepare requests for proposal, review proposals and develop contract scopes of services, evaluate programs, monitor contract compliance, participate in nationwide initiatives of the National Prevention Network (NPN), and provide technical assistance.

Every effort is made to make community-based substance abuse prevention services available on each of the State's major islands. Prevention services are contracted out to private, non-profit organizations through a request for proposal (RFP) process in accordance with State procurement laws. Prevention contracts are managed by the Division's Clinical and Consultative Services Branch. This Branch is responsible for the development of RFPs, contract development, and compliance monitoring. The Branch also develops training opportunities for prevention providers.

ADAD is also a site for the Center for the Advancement of Prevention Technology (CAPT). Through the CAPT project, technology is used to enhance prevention workforce development throughout the Pacific basin.

Organizational Chart



STATE PREVENTION INVENTORY - HAWAII PROFILE

FUNDING AND RESOURCES

Year (FFY)	State Funding	SAPT Funding	20% Set-aside
1993	\$0*	\$5,229,117	\$1,193,012
1994	0*	5,466,866	1,176,386
1995	0*	5,583,494	1,254,683

* See Endnotes.

Allocation of Funds

CSAP Strategy	FFY 1993	FFY 1994	FFY 1995
Information Dissemination	\$175,015	\$153,666	\$201,000
Education	338,692	465,755	431,629
Alternatives	70,000	116,965	164,835
Problem Identification and Referral	0	0	0
Environmental	59,305	0	0
Community-based Process	550,000	440,000	457,219
Other	0	0	0

Resource Spending	FFY 1993	FFY 1994	FFY 1995
Planning, Coordination, and Needs Assessment	N/A*	\$21,639	N/A
Quality Assurance	N/A	N/A	N/A
Training (post-employment)	N/A	5,700	40,000
Education (pre-employment)	0	0	0
Program Development	0	0	0
Research and Evaluation	N/A	0	0
Information Systems	0	0	0

*Expenditures on substance abuse resource development activities were not broken out by prevention and treatment categories.

Substate entities receiving set-aside funds for prevention service delivery

- 4 substate planning areas
- 18 prevention programs

Average amount of grant/contract:

- FFY 1993 - \$91,771
- FFY 1994 - \$84,028
- FFY 1995 - \$83,646

Per-capita 20% set-aside spending (population):

- FFY 1993 - \$1.02
- FFY 1994 - \$1.00
- FFY 1995 - \$1.10

Staff/Volunteers designated and supported by set-aside funding and level:

- FFY 1993 -
 - State: 1 FTE/0 Volunteers
 - Regional: N/A*
 - Local: N/A
- FFY 1994 -
 - State: 1 FTE/0 Volunteers
 - Regional: N/A
 - Local: N/A
- FFY 1995 -
 - State: 1 FTE/0 Volunteers
 - Regional: N/A
 - Local: N/A

*Not available. Data are not captured by the State.

STATE CONTACT

Lillian Jesky-Lubag
 Prevention Coordinator
 Alcohol and Drug Abuse Division
 Department of Health
 1270 Queen Emma Street, Suite 305
 Honolulu, HI 96789
 (808) 586-3968
 (808) 586-4016 fax
 renoir@hgea.org

STATE PREVENTION INVENTORY - HAWAII PROFILE

PROGRAMS AND SERVICES

Definition of Prevention:

The prevention efforts of the Hawaii Alcohol and Drug Abuse Division are designed to “prevent the onset of alcohol, tobacco, and other drug use in both the general population and special high-risk populations, including youth, elderly, and native Hawaiians.”

Does the State have prevention plan?

Yes, *Substance Abuse Prevention Plan 1994-97.*

- Physically disabled individuals
- Homeless/runaway youth
- College-age individuals (Oahu, Big Island)

Target populations for prevention services:

- Pregnant, addicted mothers
- Children of substance abusers
- School drop-outs
- Adolescents displaying violent/delinquent behavior
- Individuals displaying mental health problems
- Economically disadvantaged individuals

Total Number served:

- FFY 1993 – N/A*
- FFY 1994 – 10,580
- FFY 1995 – 34,143

*The State was unable to determine the number served for FFY 1993.

Programs funded:

Type	Number of Programs*/Number Served			Programs
	FFY 1993	FFY 1994	FFY 1995	
Information dissemination	17/NA♦	17/NA	17/NA	Clearinghouse/resource center; resource directories; media campaigns; brochures; radio/TV public service announcements; speaking engagements; health fairs; University of Hawaii Center for Student Development
Education	19/6,000**	NA	NA	Parenting/family management; classroom/small group sessions; peer leader/helper programs; education programs for youth groups; mentors; prescription abuse prevention project for the elderly and their caregivers; Pacific Institute of Chemical Dependency; UH Maui Community College

STATE PREVENTION INVENTORY - HAWAII PROFILE

Type	Number of Programs*/Number Served			Programs
	FFY 1993	FFY 1994	FFY 1995	
Alternatives	27/750***	NA	NA	Drug-free dances/parties; youth/adult leadership activities; Outward Bound; recreation activities; Hawaii Island YWCA; Coalition for a Drug-Free Hawaii
Community-based	25/NA	NA	NA	Community service activities; community and volunteer training; community team-building; Hale Ola Ho'opakolea; Alu Like, Inc.
Problem identification and referral ♦ ♦	0/NA	0/NA	0/NA	Employee assistance programs; student assistance programs; DUI/DWI education programs
Environmental ♦ ♦	0/NA	0/NA	0/NA	Multi-agency coordination and collaboration/coalitions; accessing services and funding; promoting establishment of review of ATOD use policies in schools; American Lung Association

*Number of providers. Hawaii reports its prevention providers by CSAP prevention strategy and target population served; therefore, the figures displayed may be duplicative.

**Figure includes 1,000 elderly individuals and their caregivers reached by prescription abuse prevention program and 5,000 college students (University of Hawaii campuses on Oahu and Big Island) reached by peer leader/helper programs.

***Number of youth served by youth leadership programs on Oahu.

♦ Data not available from State.

♦ ♦ No set-aside funds were expended on activities in the "Problem identification and referral" or "Environmental" categories.

DATA COLLECTION ACTIVITIES

Results currently available on prevention programs funded by the 20% set-aside (including needs assessments and data collection):

The Alcohol and Drug Abuse Division directs the majority of its SAPT primary prevention set-aside funds to prevention service delivery, as opposed to prevention research endeavors. The Division primarily uses findings from needs assessment studies to determine populations and geographic areas where there is a high prevalence of substance use and other risk factors in order that resources may be directed toward providing prevention services to these populations and communities.

Prior to the implementation of the Minimum Data Set (MDS), ADAD relied on providers to report outcomes in quarterly reports. Contract monitoring allowed ADAD program specialists to observe

STATE PREVENTION INVENTORY - HAWAII PROFILE

programs and talk to recipients regarding their satisfaction with the respective programs. With the advent of MDS, ADAD will be able to gather data on the activities provided and the number of individuals served. Requests for proposals (RFPs) currently being developed will specify outcomes desired and quantitative/qualitative measurements required. Providers have been given training in how to write process and behavioral outcome objectives. Additional training is needed prior to the release of the next round of RFPs.

SUPPORT SERVICES

Training and Technical Assistance:

ADAD has received training and technical assistance from the Center for Substance Abuse Prevention (CSAP). The Division's prevention program specialists provide training and technical assistance to contracted providers. ADAD also funds trainings provided by local and mainland trainers to State agencies and private, non-profit providers.

Certification Activities:

The State presently does not have a certification process for prevention professionals, although plans are underway to implement such a system. Certification administrative rules have been drafted which include requirements of prevention certification. Prevention courses have been conducted through the University of Hawaii community college system. ADAD trainings and approved trainings conducted by other agencies enable prospective certified prevention specialists to earn continuing education units (CEUs).

Endnotes

In Hawaii, State funds (that are listed below) specifically supported two programs within the Family Health Services Division of the Department of Health: (1) Peer Education Program (PEP), a school-based comprehensive education program on adolescent health issues, including the prevention of alcohol and drug abuse, violence, and suicide; (2) Baby SAFE (Substance Abuse Free Environment), a program that includes prenatal care, screening, and outreach for pregnant at-risk and substance abusing women.

FFY 1993	\$1,397,854
FFY 1994	\$1,266,887
FFY 1995	\$1,262,589