



USDA WEEKLY NATIONAL LAMB MARKET SUMMARY

Livestock, Meat, Wool, Pelt, & International Markets

Friday, February 20, 2009

Vol. 16 No. 08

National Sheep Summary

Weekly Trends: Compared to last week slaughter lambs steady; slaughter ewes mostly steady to 2.00 lower, except at Kalona and Ft. Collins 4.00-5.00 higher; feeder lambs steady to 3.00 higher. At San Angelo, TX 3164 head sold in a one day sale. Equity Electronic Auction sold 635 slaughter lambs in Wisconsin and Kansas. In direct trading slaughter ewes 1.00-2.00 higher; no test on feeder lambs.

Slaughter Lambs: Choice and Prime 2-3 90-160 lbs:

San Angelo: shorn and woolled 100-155 lbs 84.00-92.00.
 Eastern Area (VA and PA): woolled 130-160 lbs 105.00 in VA and in PA 90-110 lbs 130.00-154.00; 110-130 lbs 128.00-141.00.

Inter Mt Area (CO, WY and MT): shorn and woolled 100-115 lbs 118.00-120.50; 120-140 lbs 90.50-96.00.

Kalona, IA: woolled 100-110 lbs 101.00-102.00; 115-120 lbs 94.00-100.00; 150 94.00.

South Dakota: woolled 115-145 lbs 94.00-95.75.

Oklahoma: 120-155 lbs 85.50-90.00.

Missouri: 90-120 lbs 86.00-111.00, few 125.00-130.00.

Equity Elec: shorn and woolled 125 lbs 100.00; woolled 145 lbs 96.75.

Slaughter Lambs: Good and Choice 1-2:

San Angelo: new crop 60-70 lbs 125.00-133.00; 70-75 lbs 124.50.
 hair lambs 40-60 lbs 120.00-134.00, set 144.00; 60-80 lbs 115.00-124.00.

Kalona, IA: 70 lbs 122.50.

Inter Mt Area: 60-85 lbs 121.00-122.00; 95-115 lbs 117.00-120.50.

Missouri: 70-90 lbs 126.00-133.00; 95-115 lbs 119.00-121.00.
 hair lambs 30-60 lbs 132.50; 105-130 lbs 80.00-92.50.

Virginia: 60-90 lbs 125.00; 90-110 lbs 118.00.

Slaughter Lambs: Choice and Prime 1-2:

Eastern Area: 60-70 lbs 164.00-180.00; 70-80 lbs 158.00-167.00; 80-90 lbs 148.00-164.00.

Direct Trading: (lambs fob with 3-4 percent shrink or equivalent)

Eastern

Combelt: 500: Slaughter Lambs woolled 90-110 lbs 96.00-102.00; 130-160 lbs 100.00. Good and Choice 1-2 60-90 lbs 120.00. Slaughter Ewes Utility and Good 1-3 29.00-32.00; Cull and Utility 1-2 29.00.

Slaughter Ewes:

San Angelo: Good 2-3 30.00-38.00; Utility and Good 1-3 38.00-49.00; Utility 1-2 28.00-38.50; Cull and Utility 1-2 20.00-25.00; Cull 1 10.00-18.50.

Pennsylvania: Good 2-3 34.00-75.00; Utility and Good 1-3 40.00-48.00.

Ft. Collins: Good 3-4 36.00-41.00; Good 2-3 40.00-47.00; Utility 1-2 27.00-33.00; Cull 1 23.00-25.00.

Billings, MT: Good 3-4 23.00-26.00; Good 2-3 28.00-29.50; Utility 1-2 22.00-26.50; Cull and Utility 1-2 20.50; Cull 1 5.00-12.00.

So Dakota: Good 2-4 31.00-38.00; Good 2-3 29.00-45.00; Cull and Utility 1-2 20.00; Cull 1 11.50.

Oklahoma: Good 2-3 45.00-51.00; Utility 1-2 30.00-44.00; Cull 1 22.00-30.00.

Missouri: Utility and Good 1-3 37.00-46.00.

Virginia: Good and Choice 2-4 33.00-40.50; Utility 1-2 44.00.

Kalona: Good 2-3 33.00-40.00.

Feeder Lambs: Medium and Large 1-2:

San Angelo: 60-90 lbs 109.00-116.00; 90-110 lbs 102.00-113.00. new

crop 40-90 lbs 120.00-125.00.

Virginia: 40-60 lbs 123.00; 60-90 lbs 117.50-122.50.

Inter Mt area: 65-80 lbs 111.50-113.00; 80-100 lbs 107.50-112.00; 100-110 lbs 100.50-102.00; 178 lbs 82.00.

Kalona: 90-100 lbs 97.00-103.00.

So Dakota: 65-70 lbs 112.00-117.25; 70-80 lbs 113.50-121.00; 80-85 lbs 108.00-112.00; 90-100 lbs 95.00-105.00; 100-105 lbs 101.25-102.25; 115-120 lbs 97.75-98.00.

Oklahoma: 35 lbs 132.00; 70 lbs 142.00.

Replacement Ewes: Medium and Large 1-2:

San Angelo: Hair ewes and baby lambs 39.00 per head.

Ft. Collins: Baby tooth to solid mouth 71.00-86.00 per head.

Billings: Bred baby tooth 80.00 per head; bred solid mouth 65.00 per head; bred broken mouth 70.00 per head, 150-155 lbs 30.00-32.50 cwt.

So Dakota: Baby tooth to solid mouth 80.00-84.00 per head; solid to broken mouth 70.00-71.00 per head.

Kalona, IA: Bred mixed age 67.50-77.50 per head.

Oklahoma: Ewes with single lambs 58.00-114.00 per family, ewes with twins 90.00-123.00 per family.

http://www.ams.usda.gov/mnreports/sa_ls855.txt

National Daily Lamb Carcass Report

Negotiated sales for delivery within 14 calendar days, FOB Plant basis

Today's trades not reportable because they did not meet the 3/70/20 guideline for carcass lambs. Below is the last reported market as of 2/18/2009.

Compared to last week: 65#'s and down unevenly steady; 65-85#'s 0.01-0.86 lower; 85#'s and up 1.82 lower.

DAILY CHOICE AND PRIME, YG 1-4		Head	Wt Avg
Weight	Head		
45-DN		*	265.42
45-55#		*	245.40
55-65#		*	226.00
65-75#		*	204.40
75-85#		*	201.83
85-UP		*	197.98

* SAT-FRI CHOICE AND PRIME, YG 1-4		Head	8,126
Weight	Head		Wt Avg
45-DN	142		284.69
45-55#	283		252.03
55-65#	1,118		231.13
65-75#	2,066		209.92
75-85#	2,400		206.00
85-UP	2,117		199.10

http://www.ams.usda.gov/mnreports/lm_x1501.txt

USDA National Lamb Estimated Grading Percent Report

Week Ending 02/07/2009: Actual FIS Sheep Slaughter 43,606 head. 41,597 Lambs, 95.4% of total sheep slaughtered. 33,791 graded, 81.23% of total lambs slaughtered.

GRADE BREAKDOWN	Yield Grade				Total
	1	2	3	4	
Quality					
Prime	0.00%	1.37%	4.32%	2.71%	9.41%
Choice	3.81%	30.26%	39.94%	12.92%	90.59%
Total %	3.81%	31.63%	44.26%	15.63%	4.67%

USDA AMS Meat Grading, Certification and Verification

HIGHLIGHTS

SLAUGHTER LAMBS

Choice & Prime 2-3
 Shorn & Woolled
 (130-160 pounds)

Latest	Last Wk	Last Yr	
San Angelo, TX	88.00	89.00	90.00
El Reno, OK	N/Q	N/Q	92.50
Ft Collins, CO	94.00	98.00	N/Q

SLAUGHTER EWES

Good 2-4

Latest	Last Wk	Last Yr	
San Angelo, TX	39.50	38.50	39.00
St. Onge, Newell, SD	N/Q	N/Q	21.06
Ft. Collins, CO	41.50	39.00	38.00
Sioux Falls, SD	34.50	40.00	42.75

FEEDER LAMBS

Medium-Large 1-2

Latest	Last Wk	Last Yr	
San Angelo, TX	107.50	105.50	116.25
St. Onge, Newell, SD	102.88	105.71	N/Q
Ft. Collins, CO	N/Q	N/Q	105.00

CARCASS LAMB

FOB PLANT WT AVG

	Last Week	Latest
45#-Dn	300.00	265.42
45-55#	234.93	245.40
55-65#	219.14	226.00
65-75#	205.00	204.40
75-85#	205.00	201.83
85-Up	202.00	197.98

Last Year

45#-Dn	344.63
45-55#	242.65
55-65#	218.38
65-75#	200.64
75-85#	199.31
85-Up	196.00

National Boxed Lamb Cuts

FOB Plant basis negotiated sales for delivery within 0-21 day period, fresh and frozen carlot volume, including sales since last report, U.S. dollars per 100 pounds.

Current Volume

Fresh Cuts 1,108,770 pounds
Frozen Cuts 343,439 pounds

Items with no entries indicate non-reportable trades.

FRESH CHOICE & PRIME CUTS

IMPS	Sub-Primal	# Of Trades	Total Pound	Weighted Average	Change from Prior Days
200A	Carcass, 3-way, 55/65	3	1,243	\$405.20	
202	Foresaddle	6	3,046	\$274.67	(3.39)
204	Rack, 8-Rib, light	7	406	\$541.35	0.00
204	Rack, 8-Rib, medium	89	17,640	\$519.92	6.48
204	Rack, 8-Rib, heavy	7	6,402	\$478.72	(20.12)
204A	Rack, chined	42	11,667	\$655.58	(6.03)
204B	Rack, roast-ready	29	7,592	\$908.00	9.11
204C	Rack, roast-ready, frenched	167	23,695	\$1,083.02	15.54
204D	Rack, roast-ready, special	24	2,734	\$1,282.15	(5.11)
206	Shoulders	92	150,332	\$181.89	(1.15)
207	Shoulders, square-cut	176	153,706	\$206.86	(1.06)
208	Shoulders, square-cut, bnls	22	3,610	\$377.05	(0.31)
209	Breast	78	21,028	\$95.70	(0.65)
	Breast, bulk	31	43,973	\$68.85	2.97
209A	Ribs, Breast bones off	27	2,014	\$341.81	2.54
210	Foreshank	251	43,828	\$314.52	1.17
230	Hindsaddle	3	329	\$335.97	
231	Loins	12	2,233	\$273.22	3.84
232	Loins, trimmed 4x4	78	36,481	\$336.30	0.56
232	Loins, trimmed 1x1	14	8,975	\$567.08	10.71
232A	Loins, short-cut, 2x2	18	3,394	\$433.74	(4.83)
232A	Loins, short-cut, 1x1	75	26,940	\$540.46	4.82
232A	Loins, short-cut, 0x0	45	10,094	\$631.02	9.10
232E	Flank, untrimmed	17	12,382	\$47.62	0.77
233	Legs	69	34,257	\$259.41	(1.28)
233A	Leg, trotter-off	189	62,259	\$260.82	2.00
233C	Leg, trotter-off, partial hnl	38	6,132	\$397.81	8.46
233E	Leg, steamship	21	8,021	\$328.76	(8.66)
233F	Hindshank	59	14,231	\$324.38	0.99
234	Leg, Boneless, Tied	136	41,344	\$400.75	5.39
234A	Leg, shank off, bnls	57	7,838	\$447.18	(1.54)
234B	Leg, 2-way boneless	3	494	\$391.84	
234E	Leg, inside, boneless	80	18,157	\$486.53	(9.61)
234G	Sirloin, boneless	27	2,236	\$432.64	5.15
236	Back, trimmed	17	239	\$573.80	(1.92)
238	Trimnings	33	3,606	\$255.19	(0.92)
239	Special trimnings	4	110	\$264.27	(17.43)
245	Sirloin	5	363	\$455.15	86.23
246	Tenderloin	3	84	\$599.89	
295	Lamb for stewing	52	11,527	\$460.82	10.46
296	Ground lamb	96	17,005	\$359.67	0.26
	Necks	30	4,004	\$90.80	(0.19)

FROZEN CHOICE & PRIME CUTS

IMPS	Sub-Primal	# Of Trades	Total Pound	Weighted Average	Change from Prior Days
204	Rack, 8-Rib, medium	7	6,781	\$389.33	1.08
209	Breast	5	11,447	\$84.01	(0.59)
	Breast, bulk	6	101,842	\$69.91	(0.84)
210	Foreshank	5	2,899	\$316.43	0.00
232	Loins, trimmed 1x1	6	9,024	\$372.79	(5.45)
232A	Loins, short-cut, 1x1	4	5,073	\$389.00	
232E	Flank, untrimmed	3	67,528	\$51.18	(0.02)
234	Leg, Boneless, Tied	11	4,741	\$400.21	(4.20)
234E	Leg, inside, boneless	4	55	\$525.55	14.97
238	Trimnings	10	43,694	\$68.65	(0.23)
295	Lamb for stewing	23	5,903	\$389.80	(0.77)
296	Ground lamb	20	1,567	\$324.55	14.25
	Necks	18	19,136	\$46.17	2.79

http://www.ams.usda.gov/mnreports/lm_x1500.txt

National Weekly Comprehensive Lamb Carcass Report

Combined Negotiated, Formula and Forward Contract sales for delivery within 14 calendar days, FOB Plant basis.

Items with no entries indicate non-reportable trades.

CHOICE AND PRIME, YG 1-4		Head	8,632
Weight		Head	Wt Avg
45-DN		142	284.69
45-55#		283	252.03
55-65#		1,118	231.13
65-75#		2,287	210.82
75-85#		2,595	206.00
85-UP		2,207	199.49

CHOICE AND PRIME, YG 5		Head	515
Weight		Head	Wt Avg
45-DN			
45-55#			
55-65#			
65-75#			
75-85#			
85-UP			

CERTIFIED FRESH AMERICAN LAMB		Head	
Weight		Head	Wt Avg
UNGRADED		Head	283
45-DN		Weight	19
45-55#			173.66
55-65#			175.00
65-75#			153.94
75-85#			146.99
85-UP			149.16
			139.07

UNGRADED		Head	283
Weight		Head	Wt Avg
45-DN		19	173.66
45-55#		18	175.00
55-65#		49	153.94
65-75#		102	146.99
75-85#		57	149.16
85-UP		38	139.07

http://www.ams.usda.gov/mnreports/lm_x1555.txt

USDA Estimated National Lamb Carcass Cutout

Based on 5-Day Rolling weighted average FOB plant prices collected under Mandatory Price Reporting and industry yields.

*** Based on information provided by major lamb breakers the lamb cut percentages have been updated ***

CUTS	FOB PRICE	CHANGE	%	CARCAS	LBS.
FORESADDLE					
204 RACK, 8-RIB MEDIUM	519.92	6.48	10.77%	7.87	
209 BREAST **	73.60	-0.38	8.85%	6.46	
207 SHOULDERS, SQ-CUT	206.86	-1.06	23.53%	17.18	
210 FORESHANK	314.52	1.16	3.82%	2.79	
NECK **	53.89	-6.24	2.22%	1.62	
HINDSADDLE					
232 LOINS, TRIMMED 4X4	336.30	0.56	10.97%	8.01	
232E FLANK UNTRIMMED **	50.63	-0.09	3.39%	2.47	
233A LEG, TROTTER OFF	260.82	2.00	31.88%	23.27	
GROSS CARCASS VALUE:					
	246.20	1.02	95.45%	69.68	
FORESADDLE VALUE	252.89	0.65	49.20%	35.92	
HINDSADDLE VALUE	263.32	1.51	46.24%	33.76	
Carcass value less process/packaging per cwt cost of \$31.50					
NET CARCASS VALUE	214.70	1.02			

* Shrink and trim of 3.32 lb's not reflected in cutout value
* Based on Actual Federally Inspected Slaughter Carcass Weight of 73 lbs. for W/E 2/07/09, up 1 pound from last week.
**Includes Fresh and Frozen Product

http://www.ams.usda.gov/mnreports/lm_x1502.txt

Actual Slaughter Under Federal Inspection

http://www.ams.usda.gov/mnreports/sj_ls/11.txt

For W/E 02/07/2009

Monday	10,044
Tuesday	8,435
Wednesday	7,825
Thursday	9,697
Friday	7,568
Saturday	37
Total	43,606

Lambs & Yearlings 95.4%
Mature Sheep 4.6%

Red Meat Production

(Estimated, except *Actual*)

http://www.ams.usda.gov/mnreports/sj_ls/12.txt

Production Mil.Lbs.

21-Feb-2009	2.8
14-Feb-2009	3.0
Change	-6.7%
23-Feb-2008	3.5
Change	-20.0%
2009 YTD:	21.8
*2008 YTD: *	25.3
Change	-13.7%
07-Feb-2009	3.2

Average Live

Weights

21-Feb-2009	144
14-Feb-2009	143
23-Feb-2008	145
07-Feb-2009	145

Dressed

21-Feb-2009	72
14-Feb-2009	71
23-Feb-2008	72
07-Feb-2009	73

Slaughter

21-Feb-2009	39,000
14-Feb-2009	43,000
Change	-9.3%
23-Feb-2008	48,000
Change	-18.8%
2009 YTD:	304,000
*2008 YTD:	353,000
Change	-14.0%

New Zealand Meat and Wool Export Summary

LAMB: Inquiries from overseas buyers of NZ lamb are becoming steadier with most understanding that product is unlikely to become any cheaper going forward. Statistics from November 2008 showing that lamb numbers are at their lowest levels since the early 1960s may be the final push overseas buyers need to restart normal buying practices. Some have already done this, albeit slightly more cautiously than previous years. The rain across most of NZ late last week may not have been enough to be a drought breaker for some regions, but will definitely get grass growing again.

Lamb (\$/Head)	Fat Cover (mm)	Week Ending	Week Ending
		14-Feb-09	07-Feb-09
24 lbs	0-6	20.71	20.25
33 lbs	7-12	39.45	38.56
46 lbs	7-12	53.67	52.82
Pelt 1 lb		0.44	0.42
Ewe (\$/Head)			
46 lbs		22.79	22.28
Wool (c/cwt clean)	(microns)		
Fine	21	206.39	199.13
Medium	25	146.97	143.79
Coarse	35	73.94	79.38

Notes: All prices are U.S. Dollars./ All meat prices are carcass based and net to farmers. Lamb values include a 1 kg shorn pelt. Ewe values at 0.5 kg pelt.

http://www.ams.usda.gov/mnreports/wa_ls666.txt

Canadian Federally Inspected Slaughter

	Current	Week Ago	Year Ago	YTD	YTD	%Change
	02-07-09	01/31/09	01/26/08	2009	2008	
Cattle:	61,105	65,007	58,401	321,579	290,205	10.8%
Calves:	5,006	4,546	5,241	23,948	23,387	2.4%
Sheep:	2,711	2,542	2,683	13,836	13,897	-0.4%
Hogs:	415,983	420,079	418,033	2,145,700	1,976,548	8.6%

http://www.ams.usda.gov/mnreports/wa_ls718.txt

Canadian Live Animal Imports By State Of Entry

Sheep State	Fdr	Week/Ending Feb 14, 2009					Other	Total
		Slgtr Lambs	Slgtr Ewes	Brdng Males	Brdng Females			
Total	0	0	0	0	0	0	0	

http://www.ams.usda.gov/mnreports/wa_ls635.txt

Texas Sheep Export Figures

THURSDAY, 02/19/2009	WEEK-TO-DATE	YR-TO-DATE	PREV YTD	PERCENT
		2009	*2008*	CHANGE
Slaughter				
Lambs	0	0	0	0
Ewes	1,323	1,323	12,693	15,355
Breeding Males	0	0	0	0
Breeding Females	0	0	0	0
Total	1,323	1,323	12,693	15,355 -15.95%

http://www.ams.usda.gov/mnreports/al_ls600.txt

Lamb & Mutton Imports

METRIC TONS OF LAMB FOR REPORTING PERIOD:	12/28/08-1/3/09				TOTAL
COUNTRY OF ORIGIN Manufact	Carcasses	Cuts	Misc	Fresh Processed	
Australia	0	41	377	0	418
Canada	0	0	0	0	0
New Zealand	0	0	221	9	230
Other	0	0	0	0	0
Total	0	41	598	9	648

METRIC TONS OF MUTTON FOR REPORTING PERIOD:	12/28/08-1/3/09				TOTAL
COUNTRY OF ORIGIN Manufact	Carcasses	Cuts	Misc	Fresh Processed	
Australia	0	0	0	0	0
Canada	0	0	0	0	0
New Zealand	0	0	0	0	0
Other	0	0	0	0	0
Total	0	0	0	0	0

LAMB	Australia	Canada	N Zeal	Other	Total
Wk Ending 3-Jan-09	0	0	0	0	0
Prev Week 27-Dec-08	710	0	272	0	982
Year Ago 5-Jan-08	532	0	153	0	685
2008 YTD	532	0	153	0	685
2009 YTD	0	0	0	0	0
2009 to 2008 by %	0.00%		0.00%		0.00%

Imported Lamb

NATIONAL WEEKLY LAMB CARCASS AND LAMB CUTS - IMPORTED PRODUCT
 FOB cold storage; negotiated sales for delivery within 0-21 days and for delivery 22/Up days; fresh and frozen carlot volume; U.S. dollars per 100 pounds.

Items with no entries indicate non-reportable trades

WEEKLY VOLUME	AUS = Australian	NZ = New Zealand
Negotiated Sales 0-21 days:		Negotiated Sales 22/Up days
Fresh Cuts =	782,382 Pounds	Fresh Cuts = 5,353 Pounds
Frozen Cuts =	784,576 Pounds	Frozen Cuts = Pounds

NEGOTIATED SALES 0-21 DAYS, FRESH				
Sub-Primal	# of Trades	Total Pounds	Price Range	Weighted Average
AUS Rack, FR, Cap-off, 20-24 oz	30	6,658	710.00- 989.00	790.86
AUS Rack, FR, Cap-off, 24-28 oz	37	12,797	760.00- 915.00	809.97
AUS Rack, FR, Cap-off, 28 oz/up	20	5,218	765.00- 935.00	820.56
AUS Shoulder, Square-cut	42	188,272	125.00- 210.00	163.84
AUS Foreshank, VP	28	17,675	251.00- 315.00	276.80
AUS Shortloin, 1-Rib, 1x1	21	6,855	334.00- 560.00	424.97
AUS Leg, semi bnls	30	46,141	250.00- 358.00	290.85
AUS Leg, bnls	23	47,525	287.00- 380.00	307.32
AUS Leg, Top Sirloin, denuded	4	486	500.00- 640.00	597.90
AUS Tenderloin	6	287	792.00- 985.00	909.51

NEGOTIATED SALES 0-21 DAYS, FROZEN				
Sub-Primal	# of Trades	Total Pounds	Price Range	Weighted Average
AUS Rack, FR, Cap-off, 20-24 oz	8	3,515	675.00- 867.00	733.26
AUS Rack, FR, Cap-off, 24-28 oz	11	5,335	685.00- 880.00	772.98
AUS Rack, FR, Cap-off, 28 oz/up	9	5,963	847.00- 942.00	906.58
AUS Shoulder, Square-cut	4	731	131.00- 165.00	155.21
AUS Shoulder, Square-cut, bnls	10	36,775	220.00- 289.00	222.37
AUS Foreshank, LP	17	24,811	212.00- 305.00	248.92
AUS Leg, Long	9	28,871	197.00- 275.00	211.79
AUS Hindshank, LP	15	15,225	252.00- 295.00	274.88
AUS Leg, bnls	18	76,186	297.75- 376.50	309.40
AUS Leg, bnls, shank-off	25	54,023	275.00- 359.00	287.32
NZ Rack, 8-Rib, Standard	9	17,413	315.00- 355.00	324.84
NZ Rack, FR, Cap-off, 12 oz/dn	12	8,367	448.00- 690.00	609.33
NZ Rack, FR, Cap-off, 20 oz/up	32	9,920	617.00- 710.00	653.76
NZ Loin, Eye of, ss-off, 6 oz/up	6	445	847.00- 970.00	913.62
NZ Leg, semi bnls	5	9,893	260.00- 350.00	309.00

http://www.ams.usda.gov/mnreports/lm_x1552.txt

Regional Weekly Summaries

Mountain Areas and Western United States Sheep

Receipts: 0 Last Week: 0 Last Year: 500

Compared to last week: No reported sales. Demand and trade activity light. Feeder lamb sales FOB with overnight stand or equivalent 3-4 percent shrink unless otherwise noted. Prices quoted per cwt. Current delivery unless otherwise noted.

http://www.ams.usda.gov/mmreports/gl_ls335.txt

South Central Direct Sheep

Feeder Lambs: Trading at a standstill in the area. Available supplies of feeder lambs are limited and the new crop lambs are just starting to be marketed. **Slaughter Lambs:** TX: None. **Slaughter Ewes:** TX: None. **Replacement Ewes:** TX: None. **Slaughter Meat Goats:** Kids: TX: None.

http://www.ams.usda.gov/mmreports/sa_ls335.txt

Eastern Cornbelt Direct Sheep

Total sheep and lamb sales: 495 Last week: 495 Year ago: 522

Compared to last week, slaughter lambs sold mostly 2.00 to 3.00 higher, with some instances of 9.00 higher. Slaughter ewes sold 1.00 to 2.00 higher. Slaughter goats traded mixed. Selection 1 kids were 5.00 to 12.00 lower while selection 2 kids sold mostly 8.00 higher. Slaughter bucks and nannies traded steady. Trade and demand was moderate with light offerings. This week's supply was made up of 51% lambs and 49% slaughter ewes; with an additional 1034 head of goats.

http://www.ams.usda.gov/mmreports/gx_ls335.txt

Sioux Falls Weekly Sheep Summary

Compared to last week's light run, wooled slaughter lambs sold steady. Slaughter ewes too few for an accurate comparison; however, a few single head of young, fleshy ewes sold up to 46.00 per cwt. Feeder lambs were mostly new crop lambs. Sheep supplies this week near 66 percent slaughter lambs, 5 percent slaughter ewes, 22 percent feeder lambs and the balance bucks and misc sheep. Receipts this week 500 including 107 goats compared with 251 including 1 goat last week and 631 including 65 goats a year ago.

http://www.ams.usda.gov/mmreports/sf_ls315.txt

Weekly Lamb Pelts

WEEKLY LAMB PELTS PRICE REPORT, FOB Major Production Points Per Piece Price

Pelt activity this week compared to last week: Packer sorted green salted pelts steady on nearly inactive trading. The European and Asian markets remain inactive.

PELT TYPES:	PACKER, SEED	FREE, MOSTLY GOOD	DENSITY WOOL
SHORN	Price Range	UNSHORN	Price Range
Fall Clips	5.00 - 7.00	Wools	4.00 - 5.00
No. 1	4.00 - 6.00	Pickling skins	2.00 - 2.50
No. 2	1.00 - 2.00	Springers:	5.00 - 7.00
No. 3	1.00 - 1.50	Western Slope,	
No. 4	1.00	California,	
		Idaho,	
		Kansas,	
Imperial's		Midwest,	5.00 - 7.00
Fall Clips		Native (Gray)	
No. 1			
No. 2			

Livestock Mandatory Reporting on Negotiated, Formula and Contract trades last week showed 23,034 pelts consisting of 43.44% wooled, 50.77% Fall Shorn No. 1, 1.69% No. 2, and 4.10% No. 3&4.

http://www.ams.usda.gov/mmreports/mw_ls443.txt

National Wool Review

Domestic wool trading on a clean basis was slow this week. With no confirmed sales this week. Demand very light to light.

Weighted Average Clean Wool Prices for this week Prices reflect FOB warehouse sales for Original Bag, Bellies Out wool (some graded), in square packs, 76 mm or longer. No allowance made for coring, freight or handling fees at the warehouse level to reflect net grower prices.

** Indicates new Price this week **

Micron	U.S. GRADE	Fleece States	Territory States	Texas/N.M
18	80'S	N.A	None	None
19	80'S	N.A.	None	None
20	70'S	None	None	None
21	64-70'S	None	None	None
22	64'S	None	None	None
23	62'S	None	None	None
24	60-62'S	None	None	None
25	58'S	None	None	None
26	56-58'S	None	None	None
27	56'S	None	None	N.A.
28	54'S	None	None	N.A.
29	50-54'S	None	None	N.A.
30-34	46-50'S	.83	None	N.A.

(N.A. - microns normally not available in this area) Wool less than 75 mm discounted .10-.20 clean. Classed and skirted wools usually .10-.20 premium to OB prices.

Greasy wool trading was at a slow. With no confirmed sales this week. Demand very light to light.

FSA Wool LDP payment unchanged at .29 per pound net grower on a greasy basis. This week's Mohair LDP unchanged at 1.55 per pound.

Domestic Wool Tags - delivered to buyer, greasy basis:

1 .25-30 # 2 .15-.20 # 3 .10

Mohair trading was at a standstill. With no confirmed sales this week. Demand light.

South Africa held the first mohair sale of the summer season. Values for kid goats decreased, young goats unchanged, and fine adult goats down and strong adult down. A total of 73,685 lbs were offered, with a clearance of 89.3 percent. The Exchange rate of the Rand to U.S. dollar was at 10.21. The next sale will be held on March 10, 2009.

In Australia this week the Eastern Market Indicator was down 5 at 725 cents per Kg clean from a week ago. A total of 52,109 bales were offered with sales of 88.1 percent. Next week's offerings totaling 50,267 bales. The current exchange rate is .6415 percent of the U.S. dollar.

Australian Wool Sales - Prices Delivered Charleston S.C. All Schlumberger dry basis.

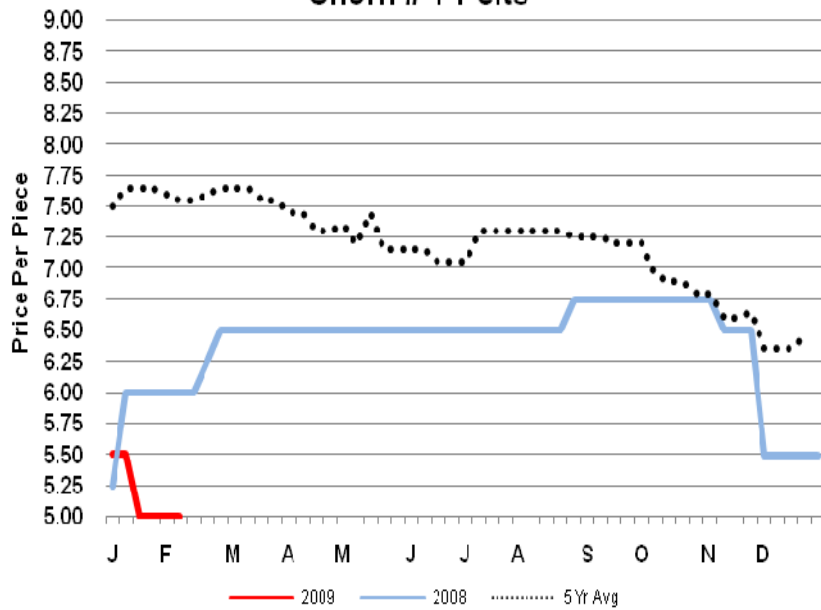
Micron	US Grade	Clean Del Price in U.S. Dollars	Change from last week
18	80's	3.14	-.10
19	80's	2.74	-.10
20	70's	2.30	-.06
21	64-70's	2.25	-.05
22	64's	2.20	-.05
23	62's	2.17	-.05
24	60-62's	2.12	-.03
25	58's	1.84	----
26	56-58's	1.79	+.02
28	54's	1.51	+.01
30	50's	1.38	----
Merino Clippings		1.57	-.02

EMI closed at 725 cents per kg clean

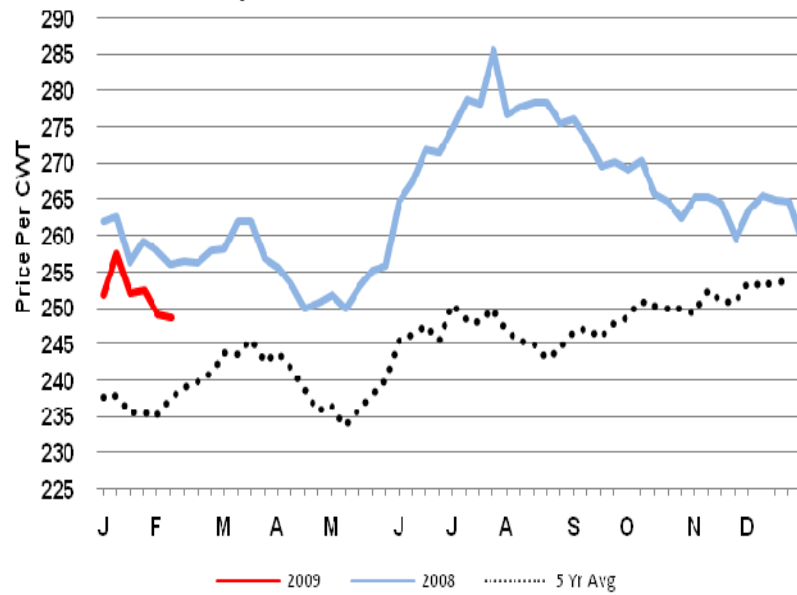
Australian Exchange rate to U.S. \$ is .6415

http://www.ams.usda.gov/mmreports/g1_ls850.txt

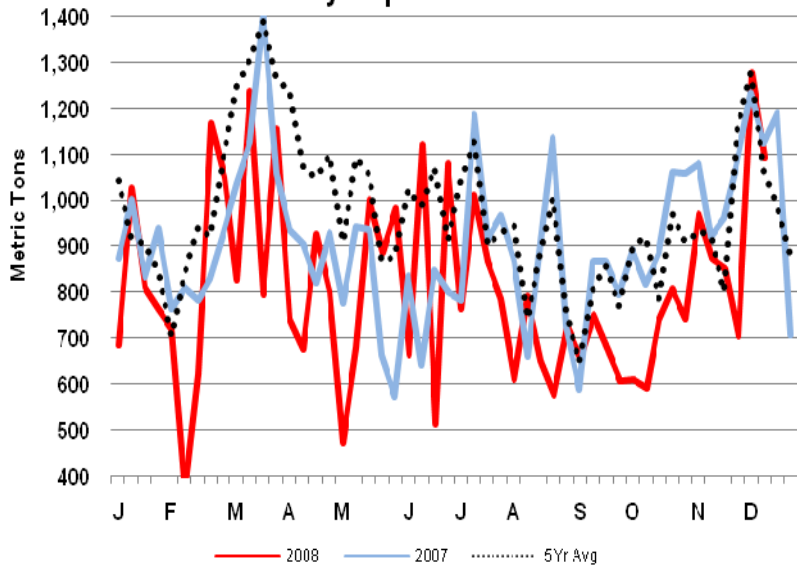
Shorn # 1 Pelts



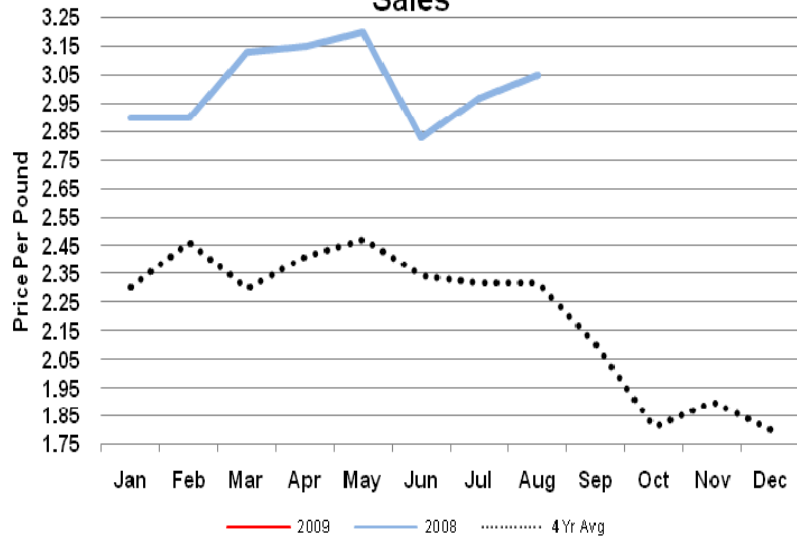
Weekly Gross Carcass Cutout Value



Weekly Imported Lamb



Monthly Clean Wool, US Grade 64's, Territory Sales



Market News Sources



For additional information, contact these Livestock and Grain Market News locations

Des Moines, IA
Darold Mapes
515-284-4460

Greeley, CO
Jodie Pitcock
970-353-9750

New Holland, PA
David Garcia
717-354-2391

San Angelo, TX
Rebecca Sauder
915-653-1778

Sioux Falls, SD
Justin Lumpkin
605-338-4061

Springfield, IL
Kim Harmon
217-782-4925