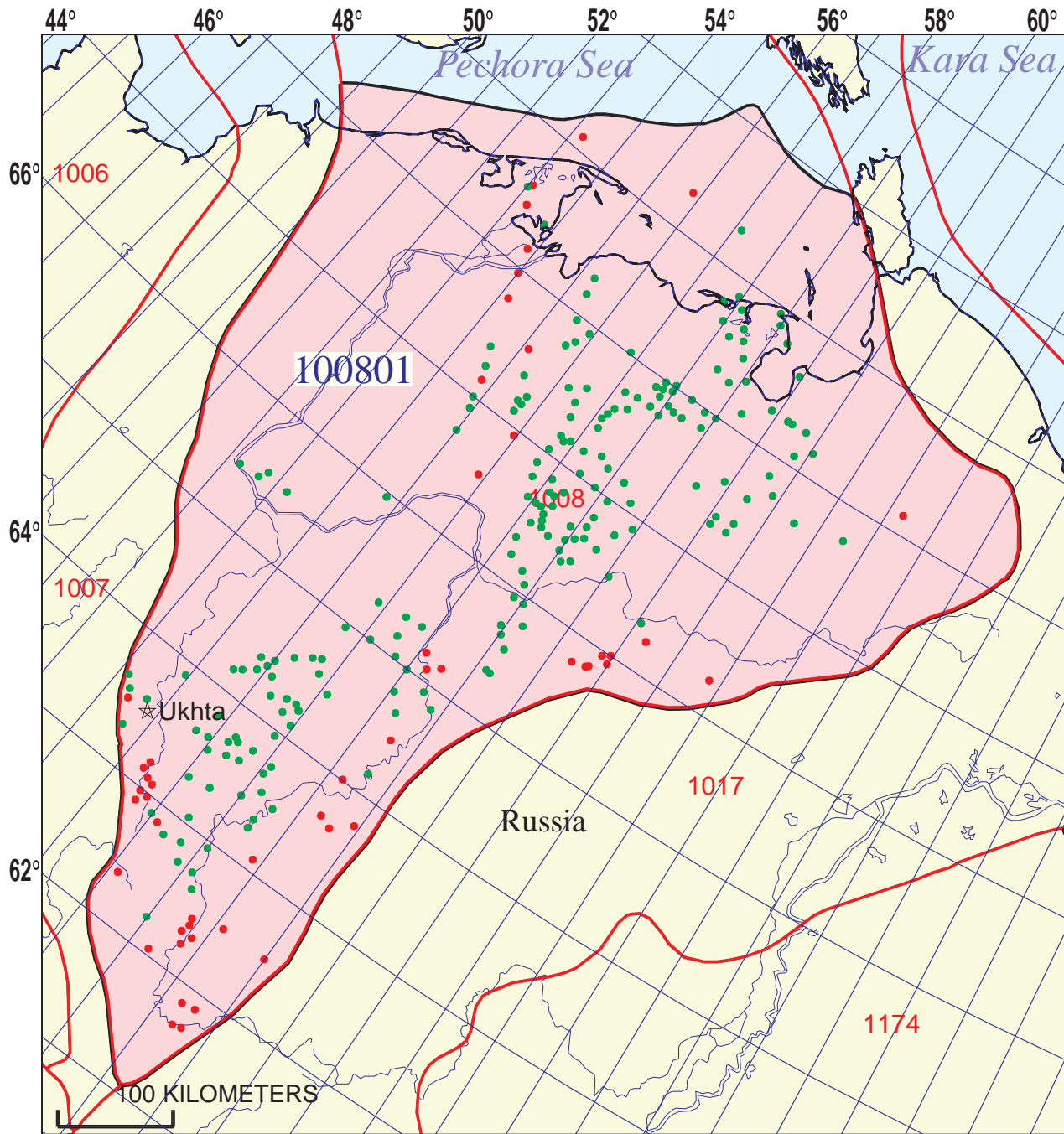


Domanik-Paleozoic Total Petroleum System 100801



- Northwest Izhma-Pechora Depression Assessment Unit 10080101
- Main Basin Platform Assessment Unit 10080102
- Foredeep Basins Assessment Unit 10080103

- Northwest Izhma-Pechora Depression Assessment Unit 10080101
- Main Basin Platform Assessment Unit 10080102
- Foredeep Basins Assessment Unit 10080103
- Timan-Pechora Basin Geologic Province 1008



Domanik-Paleozoic Total Petroleum System - 100801

EXPLANATION

- Hydrography
- Shoreline
- 1008 Geologic province code and boundary
- Country boundary
- Gas field centerpoint
- Oil field centerpoint
- 100801 — Total Petroleum System code and boundary

Projection: Equidistant Conic. Central meridian: 100. Standard Parallel: 58 30

**Domanik-Paleozoic, Total Petroleum System 100801
Assessment Results Summary**

[MMBO, million barrels of oil. BCFG, billion cubic feet of gas. MMBNGL, million barrels of natural gas liquids. MFS, minimum field size assessed (MMBO or BCFG). Prob., probability (including both geologic and accessibility probabilities) of at least one field equal to or greater than the MFS. Results shown are fully risked estimates. For gas fields, all liquids are included under the NGL (natural gas liquids) category. F95 represents a 95 percent chance of at least the amount tabulated. Other fractiles are defined similarly. Fractiles are additive under the assumption of perfect positive correlation. Shading indicates not applicable]

| Code and Field Type | MFS | Prob. (0-1) | Undiscovered Resources | | | | | | | | | | | |
|--|-----|-------------|------------------------|-------|-------|-------|------------|--------|--------|--------|--------------|-------|-------|-------|
| | | | Oil (MMBO) | | | | Gas (BCFG) | | | | NGL (MMBNGL) | | | |
| | | | F95 | F50 | F5 | Mean | F95 | F50 | F5 | Mean | F95 | F50 | F5 | Mean |
| 10080101 Northwest Izhma-Pechora Depression Assessment Unit | | | | | | | | | | | | | | |
| Oil Fields | 5 | 0.40 | 0 | 0 | 76 | 18 | 0 | 0 | 54 | 13 | 0 | 0 | 3 | 1 |
| Gas Fields | 30 | | | | | | 0 | 0 | 459 | 107 | 0 | 0 | 19 | 4 |
| Total | | 0.40 | 0 | 0 | 76 | 18 | 0 | 0 | 513 | 120 | 0 | 0 | 22 | 5 |
| 10080102 Main Basin Platform Assessment Unit | | | | | | | | | | | | | | |
| Oil Fields | 5 | 1.00 | 2,462 | 4,661 | 8,298 | 4,938 | 1,579 | 3,208 | 6,144 | 3,452 | 85 | 188 | 393 | 207 |
| Gas Fields | 30 | | | | | | 3,872 | 10,157 | 21,222 | 11,062 | 143 | 396 | 902 | 443 |
| Total | | 1.00 | 2,462 | 4,661 | 8,298 | 4,938 | 5,451 | 13,365 | 27,366 | 14,515 | 228 | 585 | 1,295 | 650 |
| 10080103 Foredeep Basins Assessment Unit | | | | | | | | | | | | | | |
| Oil Fields | 5 | 1.00 | 54 | 187 | 468 | 214 | 53 | 188 | 493 | 219 | 3 | 11 | 31 | 13 |
| Gas Fields | 30 | | | | | | 7,962 | 18,822 | 34,257 | 19,671 | 290 | 729 | 1,472 | 786 |
| Total | | 1.00 | 54 | 187 | 468 | 214 | 8,014 | 19,010 | 34,749 | 19,891 | 293 | 740 | 1,503 | 800 |
| 100801 Total: Domanik-Paleozoic Total Petroleum System | | | | | | | | | | | | | | |
| Oil Fields | | 1.00 | 2,516 | 4,848 | 8,841 | 5,170 | 1,632 | 3,396 | 6,691 | 3,684 | 88 | 199 | 427 | 221 |
| Gas Fields | | | | | | | 11,834 | 28,979 | 55,937 | 30,841 | 433 | 1,125 | 2,392 | 1,233 |
| Total | | 1.00 | 2,516 | 4,848 | 8,841 | 5,170 | 13,465 | 32,375 | 62,628 | 34,525 | 521 | 1,325 | 2,820 | 1,454 |