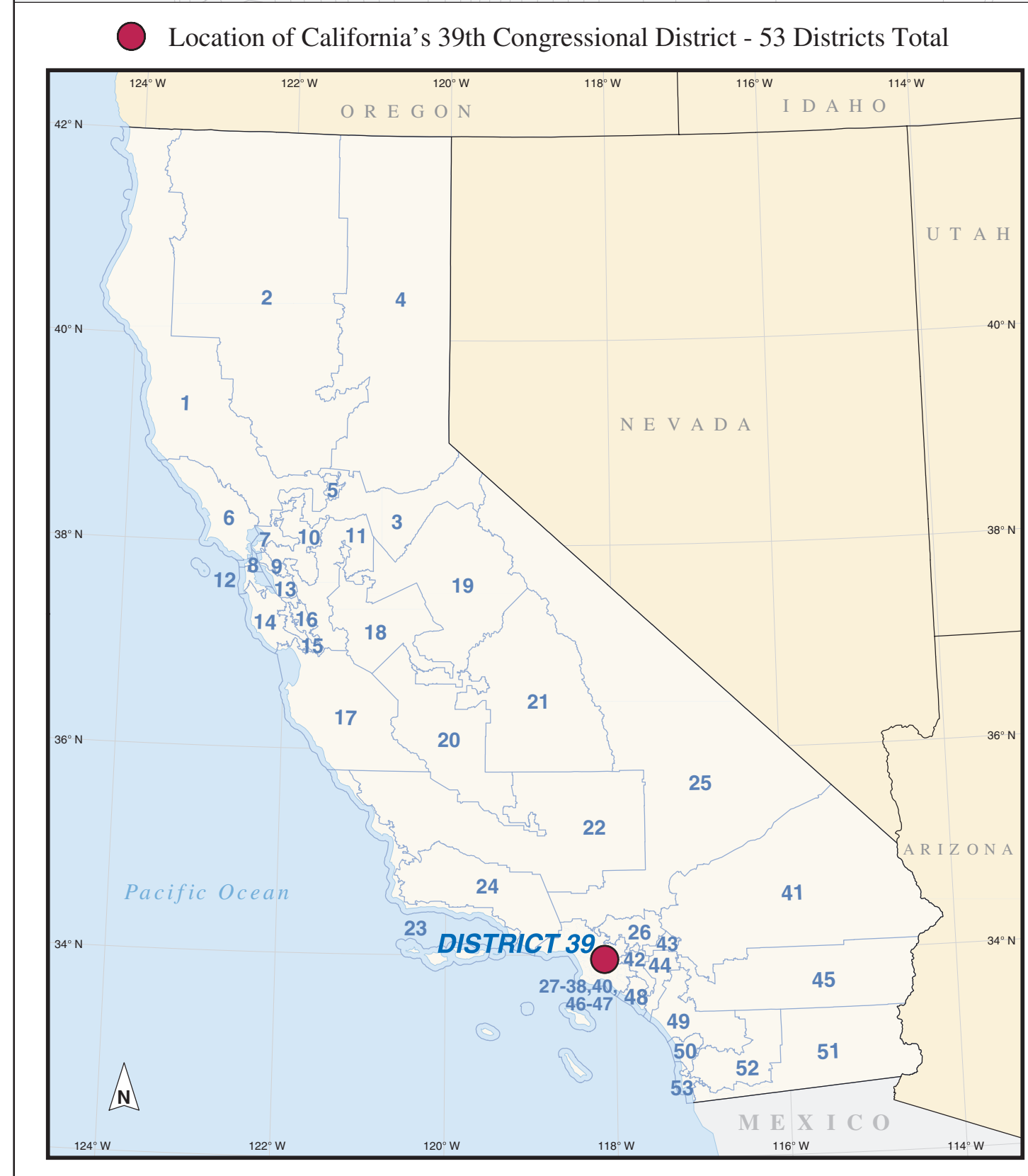
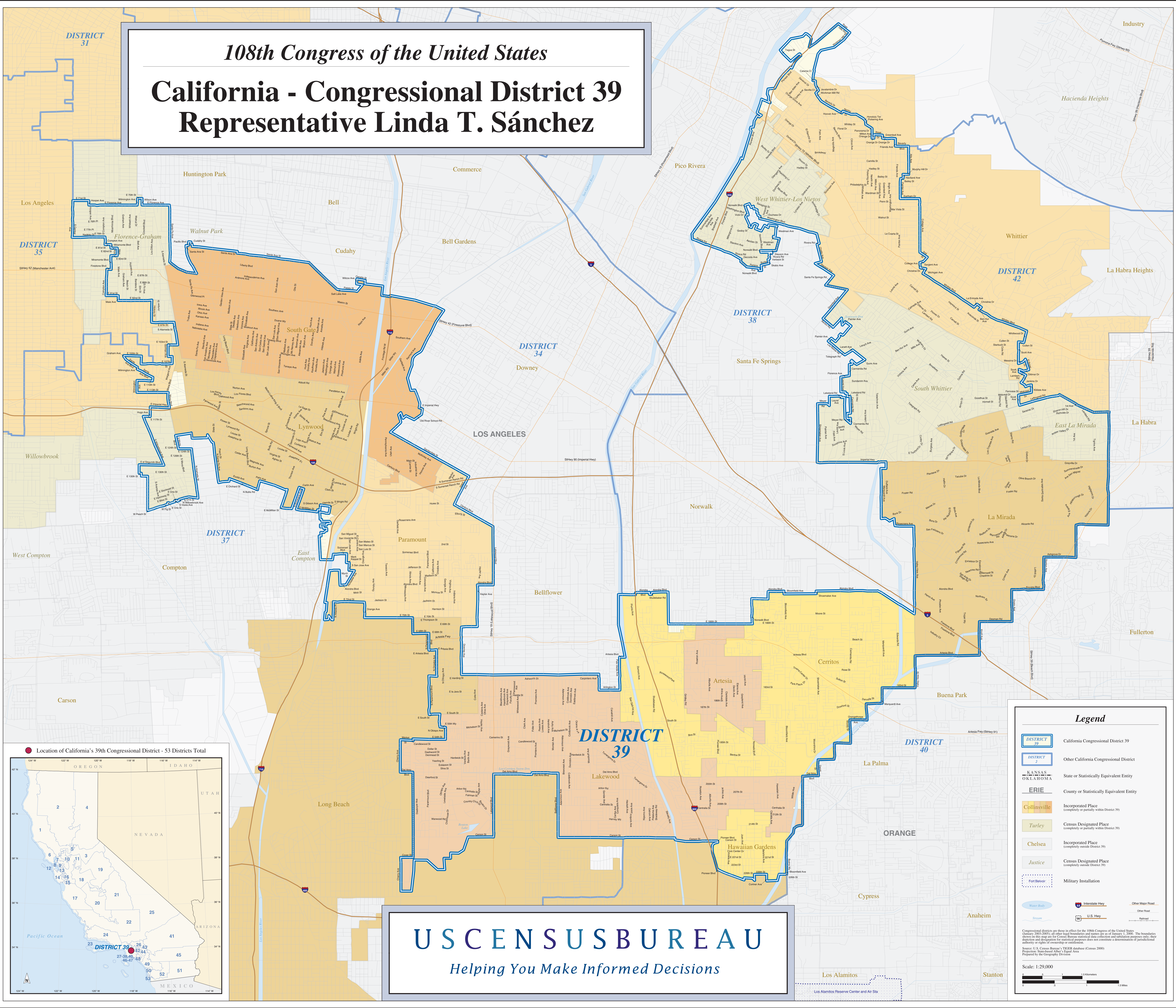


108th Congress of the United States  
**California - Congressional District 39**  
**Representative Linda T. Sánchez**



**Legend**

- DISTRICT 39 California Congressional District 39
- DISTRICT 2 Other California Congressional District
- KANSAS, OKLAHOMA State or Statistically Equivalent Entity
- ERIE County or Statistically Equivalent Entity
- Collinsville Incorporated Place (completely or partially within District 39)
- Turley Census Designated Place (completely or partially within District 39)
- Chelsea Incorporated Place (completely outside District 39)
- Justice Census Designated Place (completely outside District 39)
- Fort Belvoir Military Installation
- Water Body Water Body
- Interstate Hwy Interstate Hwy
- U.S. Hwy U.S. Hwy
- Other Major Road Other Major Road
- Other Road Other Road
- Railroad Railroad

Congressional districts are those in effect for the 108th Congress of the United States (January 3, 2005) to all other legislative and executive sessions of January 3, 2005. The boundaries shown on this map are for Census Bureau statistical data collection and tabulation purposes only; they do not constitute a determination of jurisdictional authority or rights of ownership or control.

Source: U.S. Census Bureau, PL93-98 (Statistical Areas - Census 2000)  
 Projection: Statewide Albers' Equal Area  
 Prepared by the Geography Division

Scale: 1:29,000

**US CENSUS BUREAU**  
*Helping You Make Informed Decisions*