



BLM NEVADA MINERALS PROGRAM

***Presented by:
Gary Johnson
Deputy State Director -Minerals
775/861-6585
gjohnson@blm.gov***

THIS PRESENTATION INCLUDES:



✦ ***SOLID
MINERALS***



✦ ***FLUID
MINERALS***

SOLID MINERALS

◆ ***LOCATABLES***

◆ ***SALEABLES***

◆ ***LEASABLES***

◆ ***ABANDONED
MINE LANDS***

◆ ***HAZARDOUS
MATERIALS***

LOCATABLES: GOLD MINING IN NEVADA



26 TYPES OF LOCATABLE MINERALS MINED ON PUBLIC LANDS IN NEVADA

- ◆ ***GOLD***
- ◆ ***SILVER***
- ◆ ***COPPER***
- ◆ ***ALUMINUM***
- ◆ ***ANTIMONY***
- ◆ ***BARITE***
- ◆ ***CALCIUM***
- ◆ ***CLAY***
- ◆ ***BENTONITE
(CLAY)***
- ◆ ***DIATOMITE***
- ◆ ***FELDSPAR***
- ◆ ***GEMSTONE***
- ◆ ***GYP SUM***
- ◆ ***LIMESTONE***
- ◆ ***LITHIUM***
- ◆ ***DOLOMITE***
- ◆ ***MOLYBDENUM***

(Continue)

- ◆ *PERLITE*
- ◆ *RARE EARTHS*
- ◆ *SILICON*
- ◆ *SODIUM*
- ◆ *STONE*
- ◆ *TALC*
- ◆ *TUNGSTEM*
- ◆ *URANIUM*
- ◆ *ZEOLITES*

MINERAL PRICES

✦ **GOLD**

✦ **\$754/OZ**

✦ **SILVER**

✦ **\$10/OZ**

✦ **COPPER**

✦ **\$1.72/LB**



2007 PRODUCTION

✦ **GOLD**

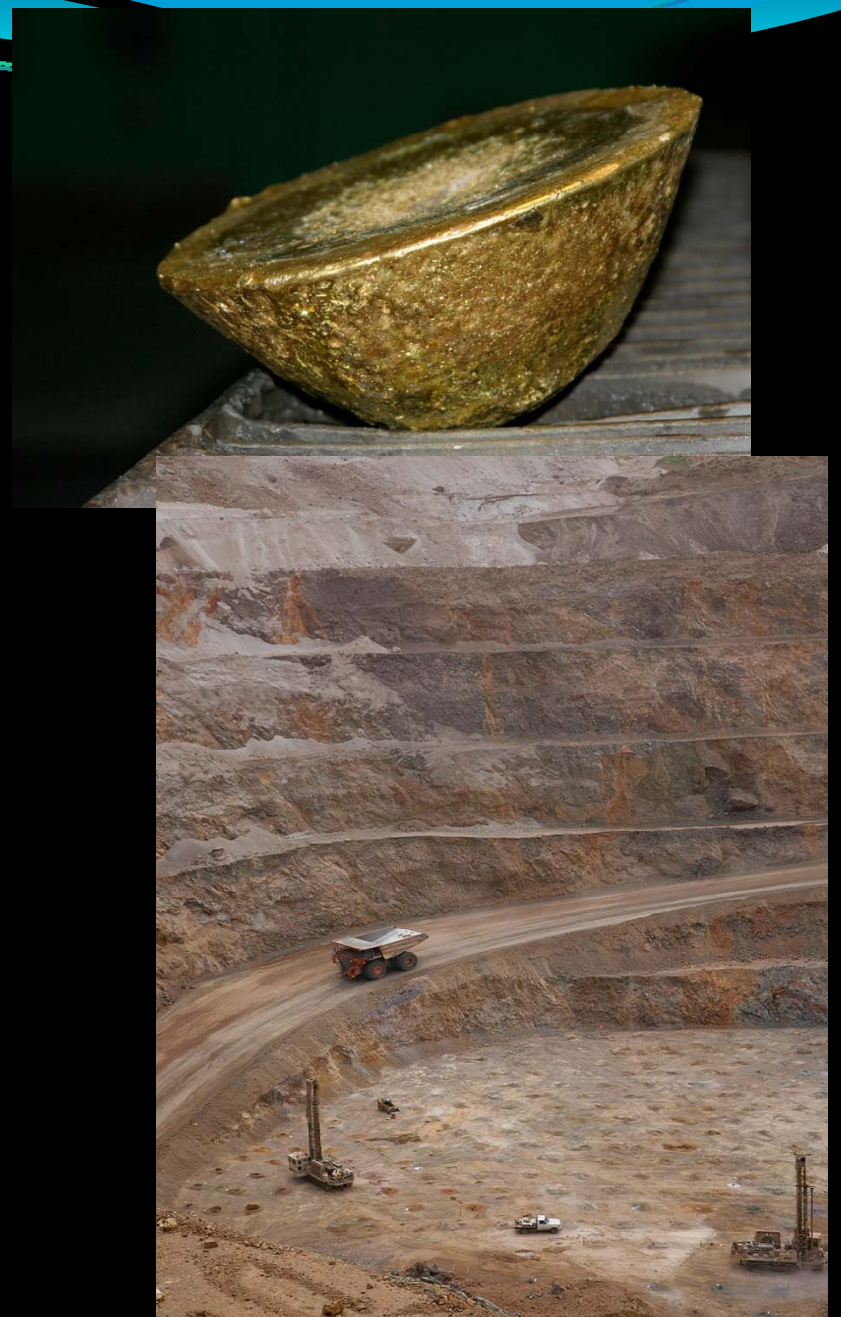
6,037,000 OZ

✦ **SILVER**

8,430,000 OZ

✦ **COPPER**

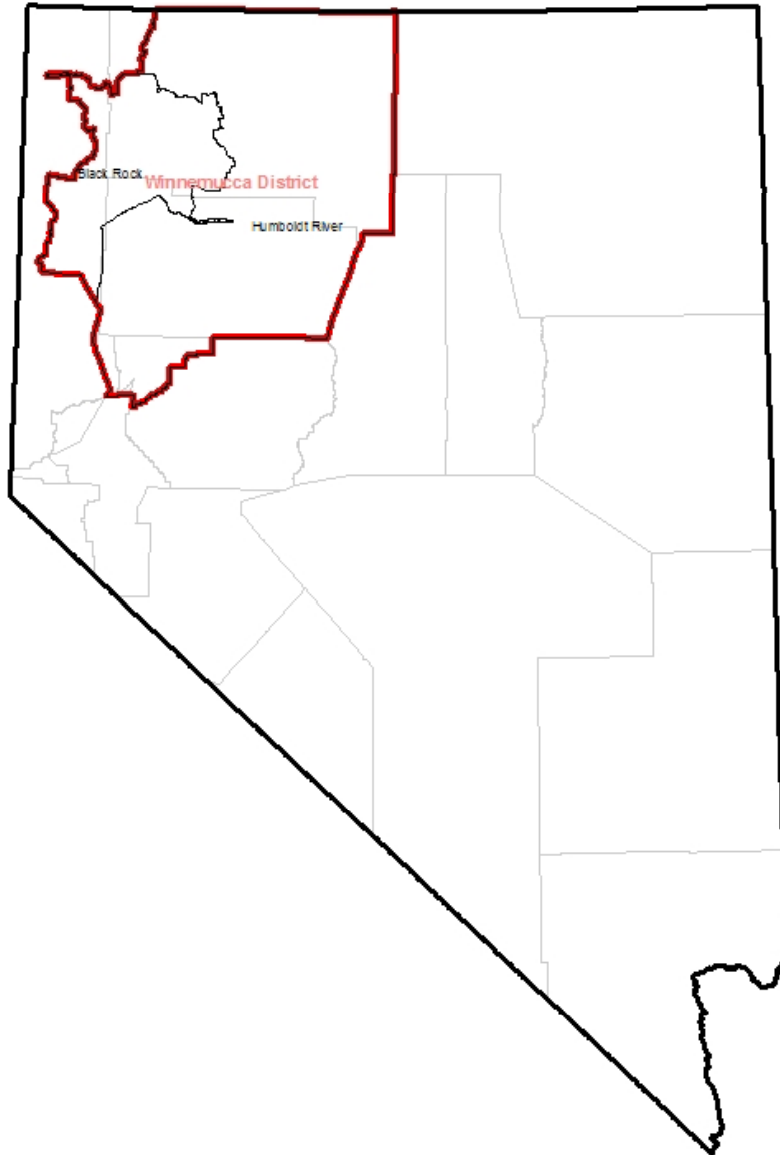
143,000,000 LB



MAJOR MINES IN NEVADA

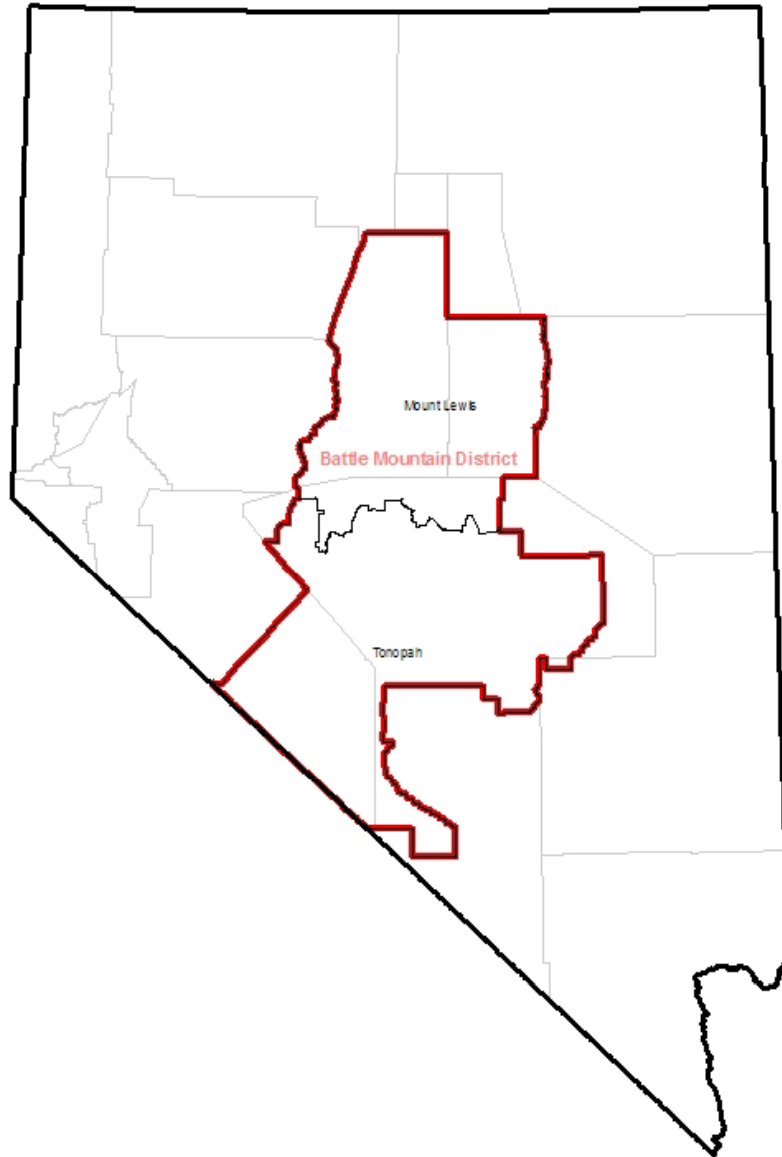


WINNEMUCCA DISTRICT



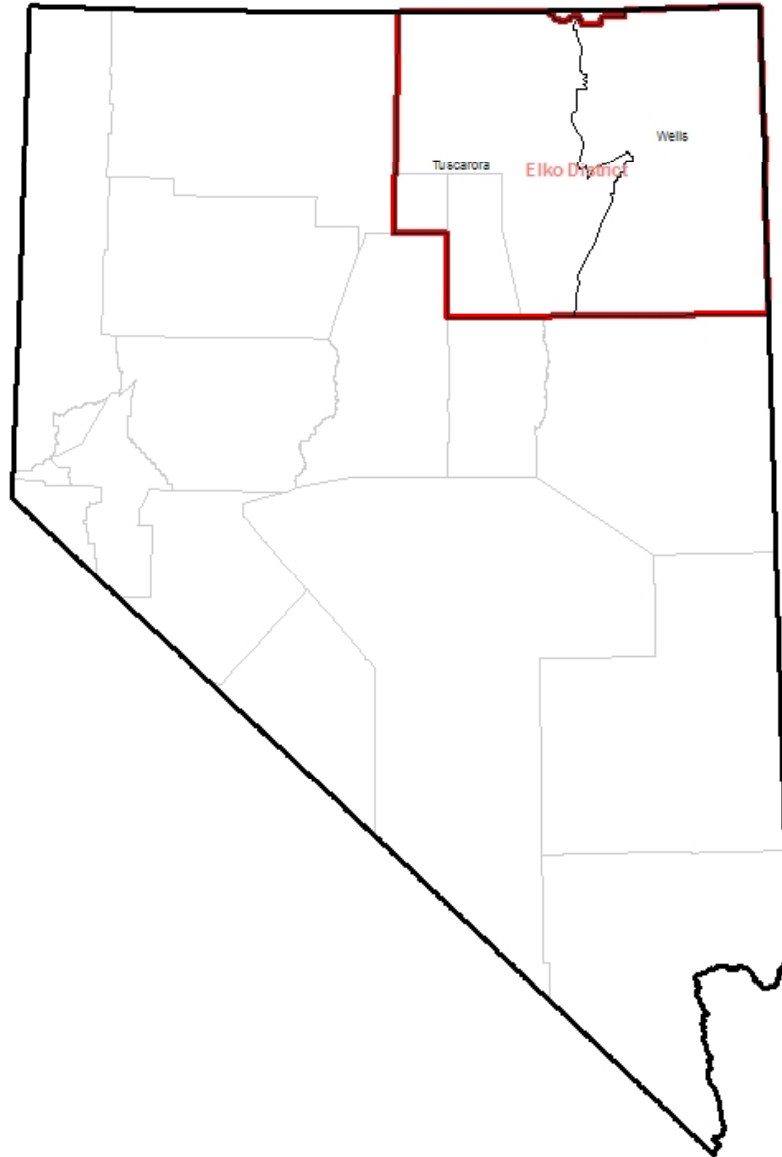
- ◆ ***ASHDOWN MINE***
- ◆ ***MARIGOLD MINE***
- ◆ ***TURQUOISE RIDGE JOINT VENTURE***
- ◆ ***TWIN CREEKS MINE***
- ◆ ***COEUR ROCHESTER MINE***
- ◆ ***FLORIDA CANYON MINE***

BATTLE MOUNTAIN DISTRICT



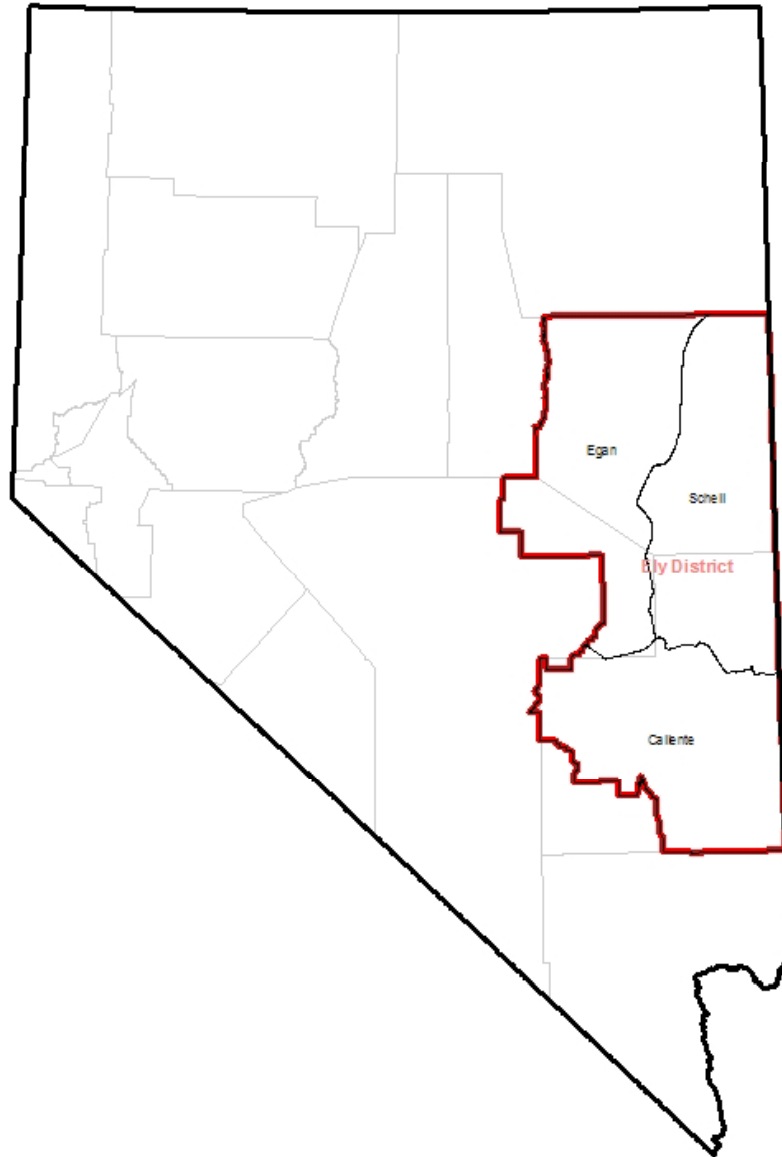
- ✦ ***RUBY HILL MINE***
- ✦ ***CORTEZ MINES***
- ✦ ***PHOENIX PROJECT***
- ✦ ***SMOKY VALLEY COMMON OPERATIONS***

ELKO DISTRICT



- ◆ ***BETZE-POST MINE***
- ◆ ***EASTERN NEVADA
OPERATION – (INCLUDES
CARLIN, GOLD QUARRY &
LEEVILLE MINES)***
- ◆ ***MEIKLE MINE***
- ◆ ***MIDAS MINE***

ELY DISTRICT



ELY DISTRICT

✦ ***BALD MOUNTAIN MINE***

✦ ***ROBINSON MINE***

NORTH VS. SOUTH



✦ ***LARGE HEAP
LEACH GOLD
MINES***

✦ ***VALIDITY
ISSUES***



SALEABLE: LAS VEGAS – LARGEST IN BUREAU



9.1.2005 09:21



United States Department of the Interior

BUREAU OF LAND MANAGEMENT
Las Vegas Field Office
4701 N. Torrey Pines Drive
Las Vegas, Nevada 89130-2301



In Reply Refer to:
N-81369
3809 (NV-053)

CERTIFIED MAIL NO.
RETURN RECEIPT REQUESTED

Canyon Resources Corporation
Attn: Joy Moseley
14142 Denver West Parkway, Suite 250
Golden, CO 80401-3119

Dear Ms. Moseley:

Mining notice, N-81369, to conduct exploratory work in sections 2, T. 13 S., R. 47 E., M.D.M., Nye County, Nevada was received complete in this office on April 19, 2006. The proposed work will disturb around 1.7 acres of public lands managed by the Bureau of Land Management (BLM). Disturbance will include the construction of new access routes, the construction of 20 drill pads and the drilling of 20 rotary drill holes.

This office has reviewed this notice and has determined that the document contains the required information as prescribed by regulation for surface disturbing activities. In addition, a reclamation bond has been posted with and accepted by the BLM, Nevada State Office. You may proceed with the proposed operations listed in your notice, according to Federal regulations at *43 CFR 3809* and *43 CFR 3715*. Please notify this office at least five working days prior to the initiation of operations and provide us with an estimate of your operating period.

This acknowledgment does not relieve the operator of the following obligations:

- Prevention of unnecessary or undue degradation of public lands and resources.
- Reclamation of lands disturbed by the proposed operations.
- Compliance with all applicable Federal, State and local laws and regulations. Obtain all appropriate Federal, State and local authorizations and permits.

✦ **NOTICES**
(Less than
5 Acres)

**Round Mountain
2006 Expansion
Plan of Operations Amendment
N-72662**



Submitted to:
**United States Department of the Interior
Bureau of Land Management**

Prepared by:



**Round Mountain Gold Corporation
P.O. Box 480
#1 Smoky Valley Mine Road
Round Mountain, NV 89045**

and

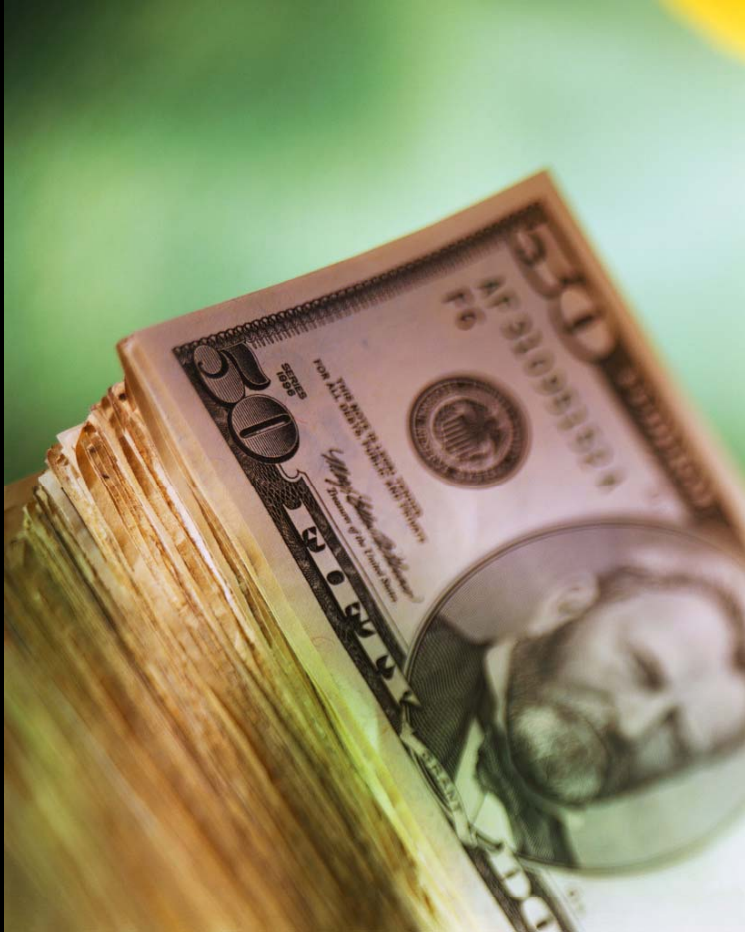


**1250 Lamolle Hwy, Suite 520
Elko, NV 89801**

June 2006

**✦ PLAN OF
OPERATIONS**

BONDING



◆ **OVER**

\$1,000,000,000
HELD IN BONDS FOR
FINAL
RECLAMATION

RECLAMATION COST ESTIMATES



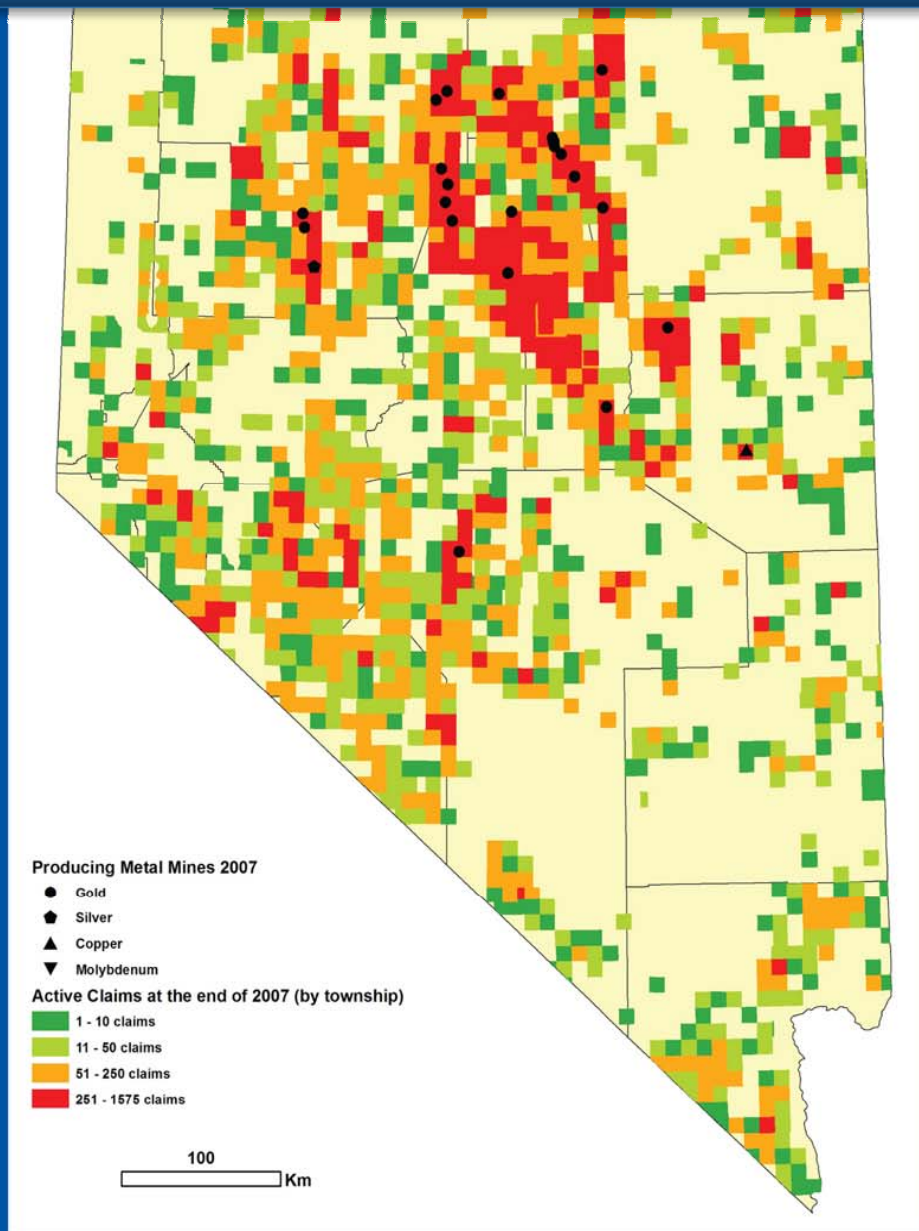
RCE COMPUTER MODELS

- ✦ ***NEVADA
COMPUTER MODEL
(SRCE)***
- ✦ ***NATIONAL
COMPUTER MODEL
(SHERPA)***

ADJUDICATION

Active Claims 2007

(by township)



SUSTAINABLE DEVELOPMENT



WHAT DOES THE FUTURE HOLD?

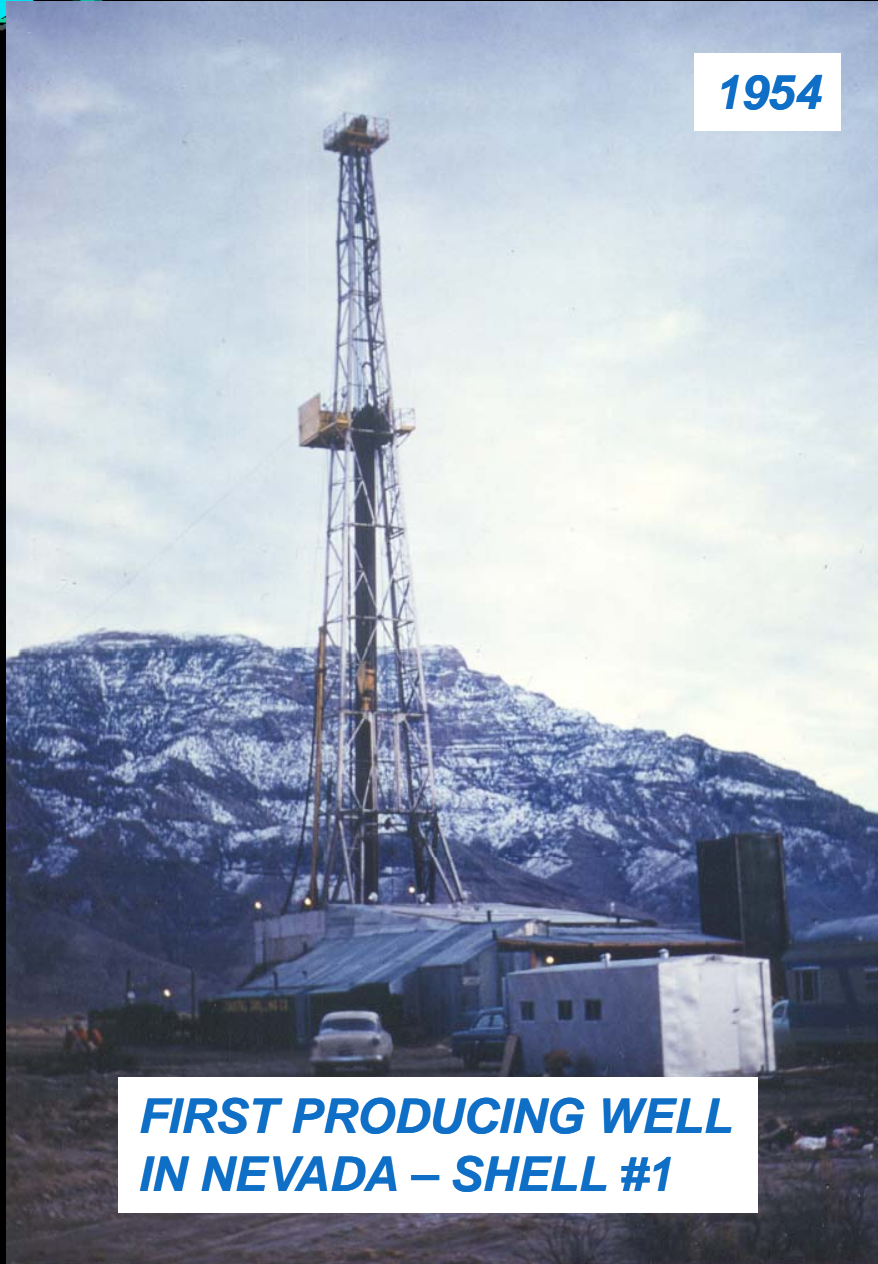
FLUID MINERALS

✦ ***GEO THERMAL***

✦ ***OIL AND GAS***

OIL AND GAS

1954



**FIRST PRODUCING WELL
IN NEVADA – SHELL #1**

2008



DRY HOLE

BLM NEVADA
DEPUTY STATE DIRECTOR
GOALS

PREVENT UNNECESSARY OR UNDUE DEGRADATION

STREAMLINE PERMITTING PROCESSES

KEEP UP WITH LARGE WORKLOADS

IMPROVE COMMUNICATIONS

DEVELOP MINERALS FOR BENEFIT TO THE PUBLIC
IN AN ENVIRONMENTALLY RESPONSIBLE WAY

NEVADA

BLM

THE END

