

RNAV (GPS) RWY 27

LOGANSPORT/CASS COUNTY (GGP)

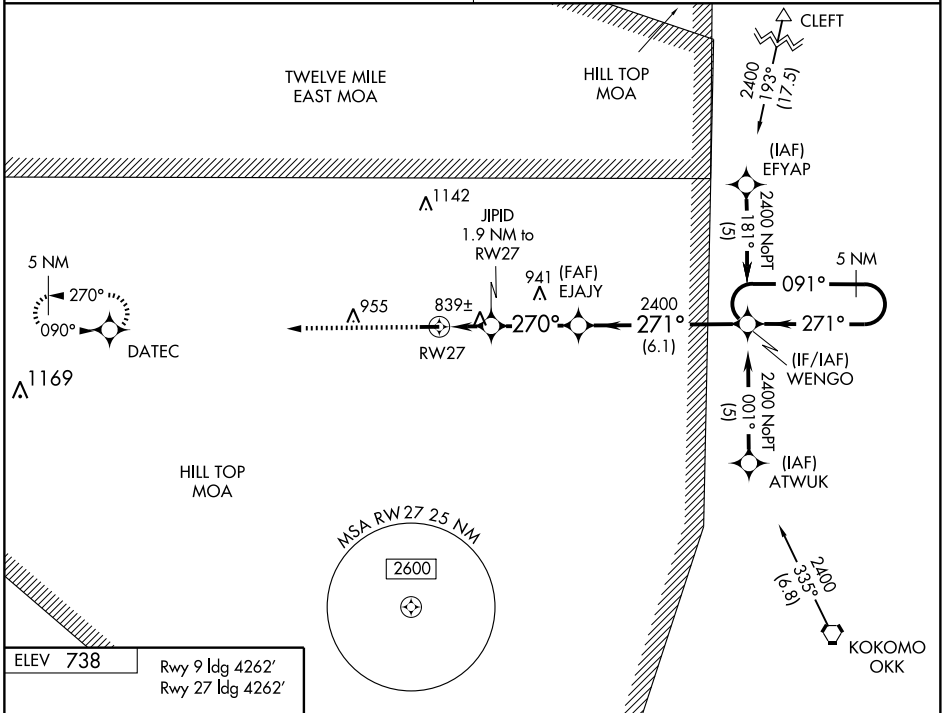
WAAS CH 70703 W27A	APP CRS 270°	Rwy ldg 4262 TDZE 738 Apt Elev 738
--	------------------------	---

▼ Obtain local altimeter setting on CTAF; when not received, use Lafayette altimeter setting and increase DA 91 feet and visibility all Cats ¼ mile; increase all MDAs 100 feet and LNAV visibility Cats C and D ¼ mile. Visibility reduction by helicopters NA. DME/DME RNP-0.3 NA.

MISSED APPROACH: Climb to 2400 direct DATEC and hold.

GRISSEM APP CON*
121.05 379.3

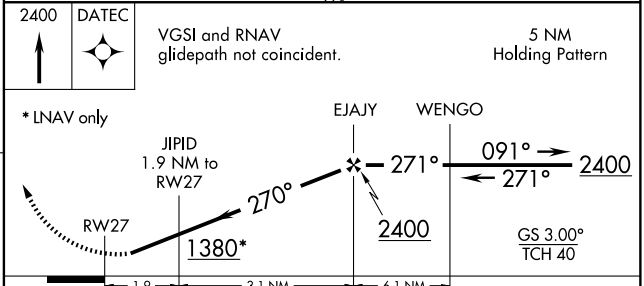
UNICOM
122.8 (CTAF) 0



EC-2, 05 JUL 2007 to 02 AUG 2007

EC-2, 05 JUL 2007 to 02 AUG 2007

ELEV 738	Rwy 9 ldg 4262' Rwy 27 ldg 4262'
----------	-------------------------------------



CATEGORY	A	B	C	D
LPV DA	988-1 250 (300-1)			
LNAV MDA	1100-1 362 (400-1)			1100-1¼ 362 (400-1¼)
CIRCLING	1140-1 402 (500-1)	1200-1 462 (500-1)	1200-1½ 462 (500-1½)	1300-2 562 (600-2)