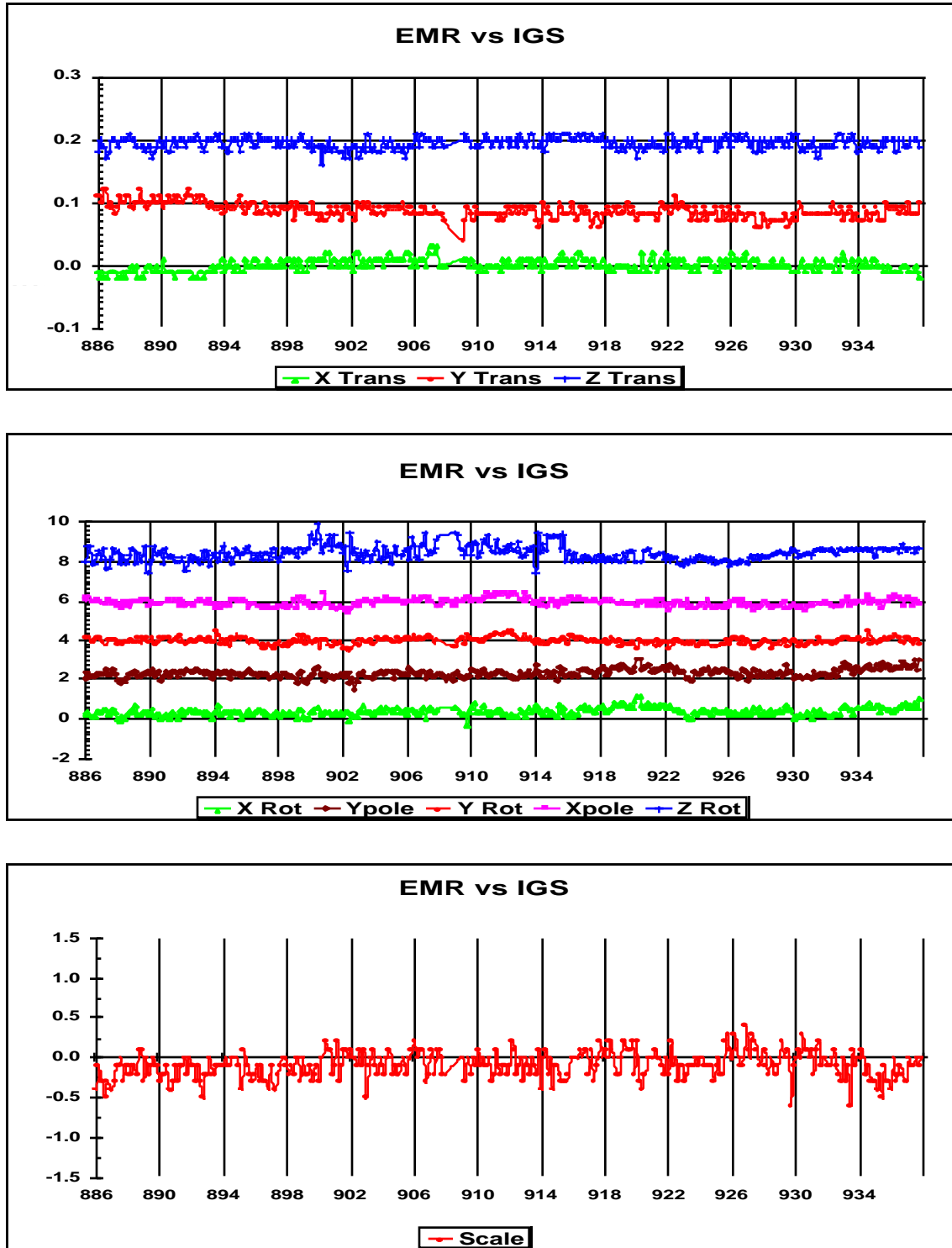
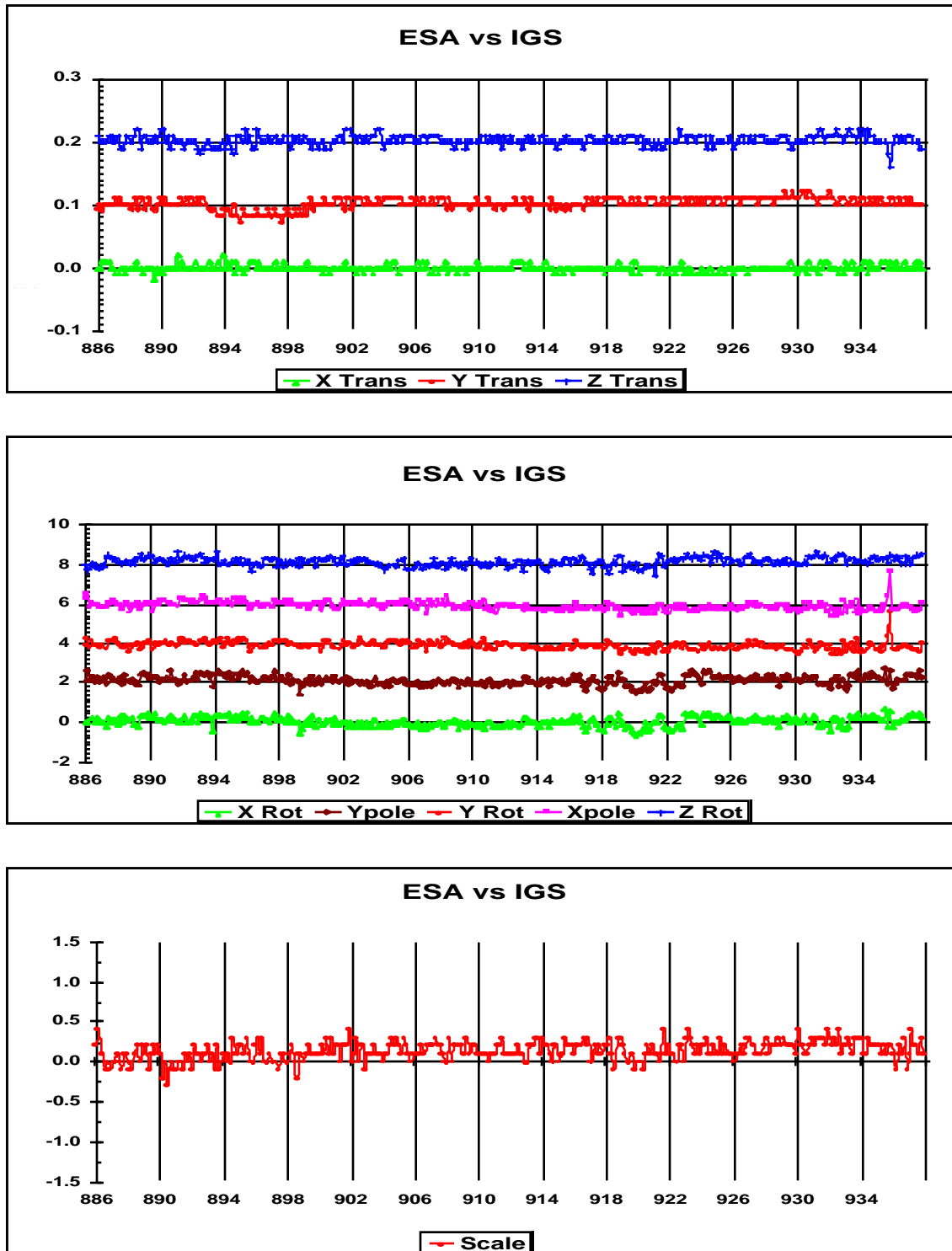


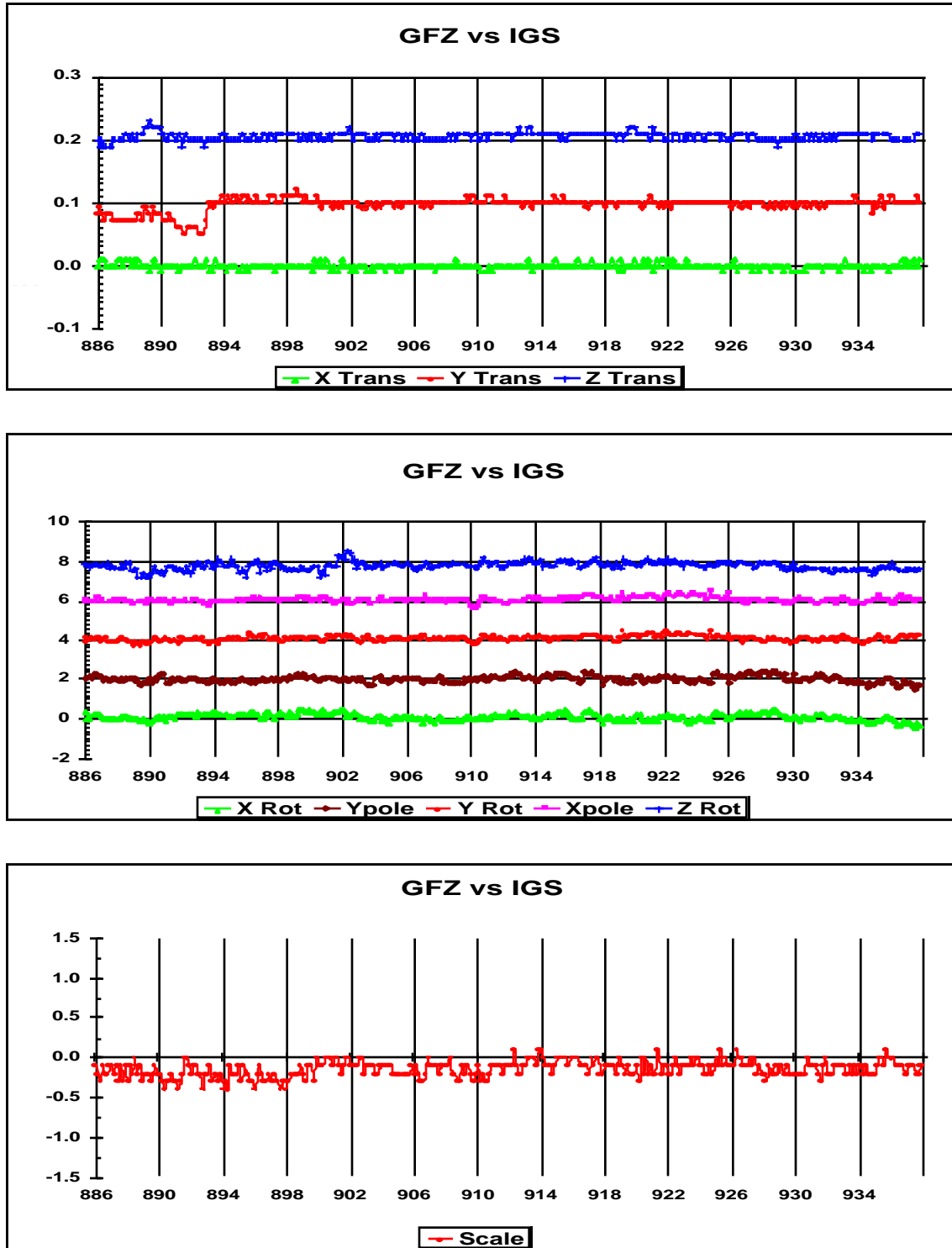
**Figure 18.** COD 1997: Final daily seven-parameter Helmert transformations (X, Y and Z Translations are each offset by 0.1 metre; X, Y, Z Rotations and Y and X pole differences are each offset by 2 mas)



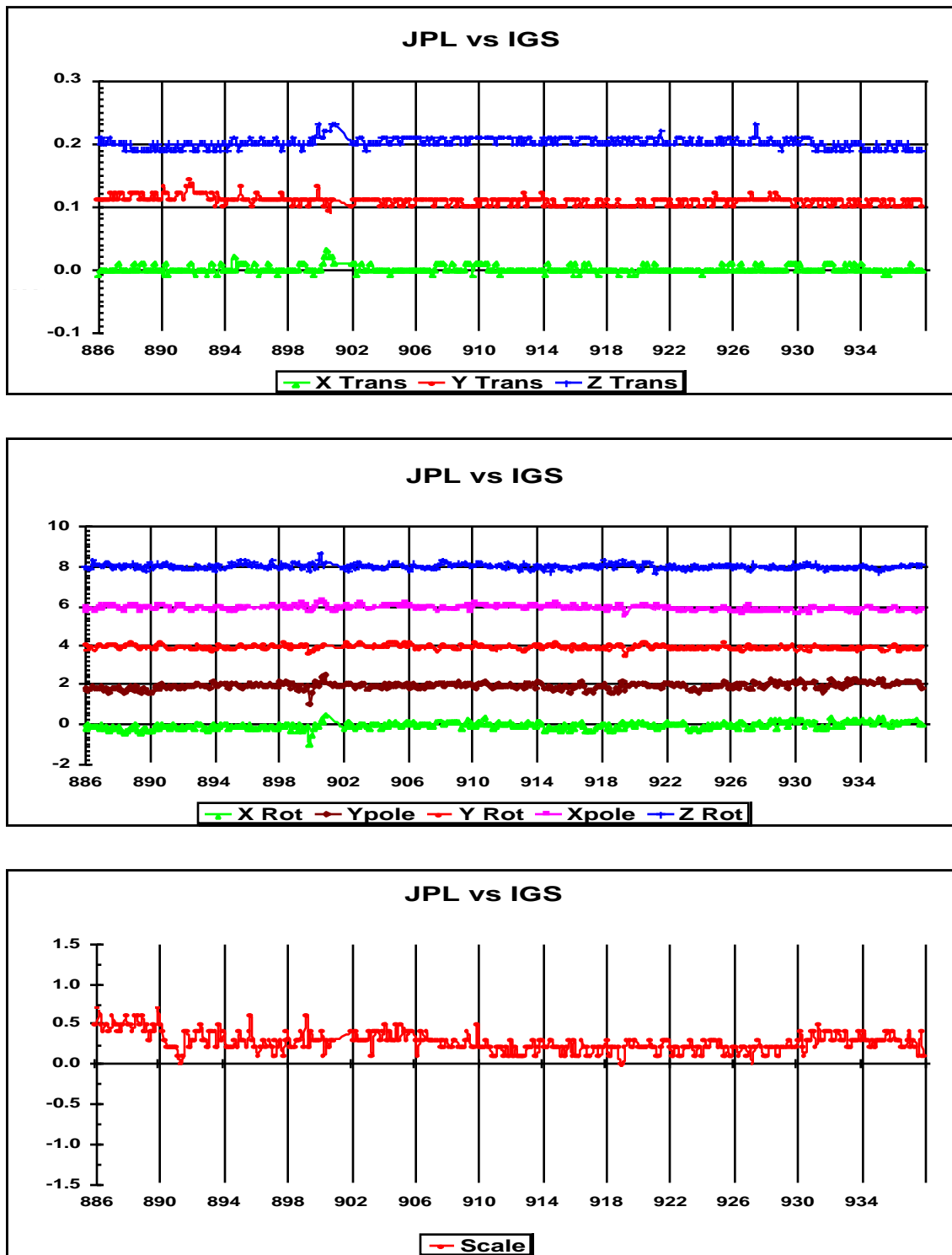
**Figure 19.** EMR 1997: Final daily seven-parameter Helmert transformations (X, Y and Z Translations are each offset by 0.1 metre; X, Y, Z Rotations and Y and X pole differences are each offset by 2 mas)



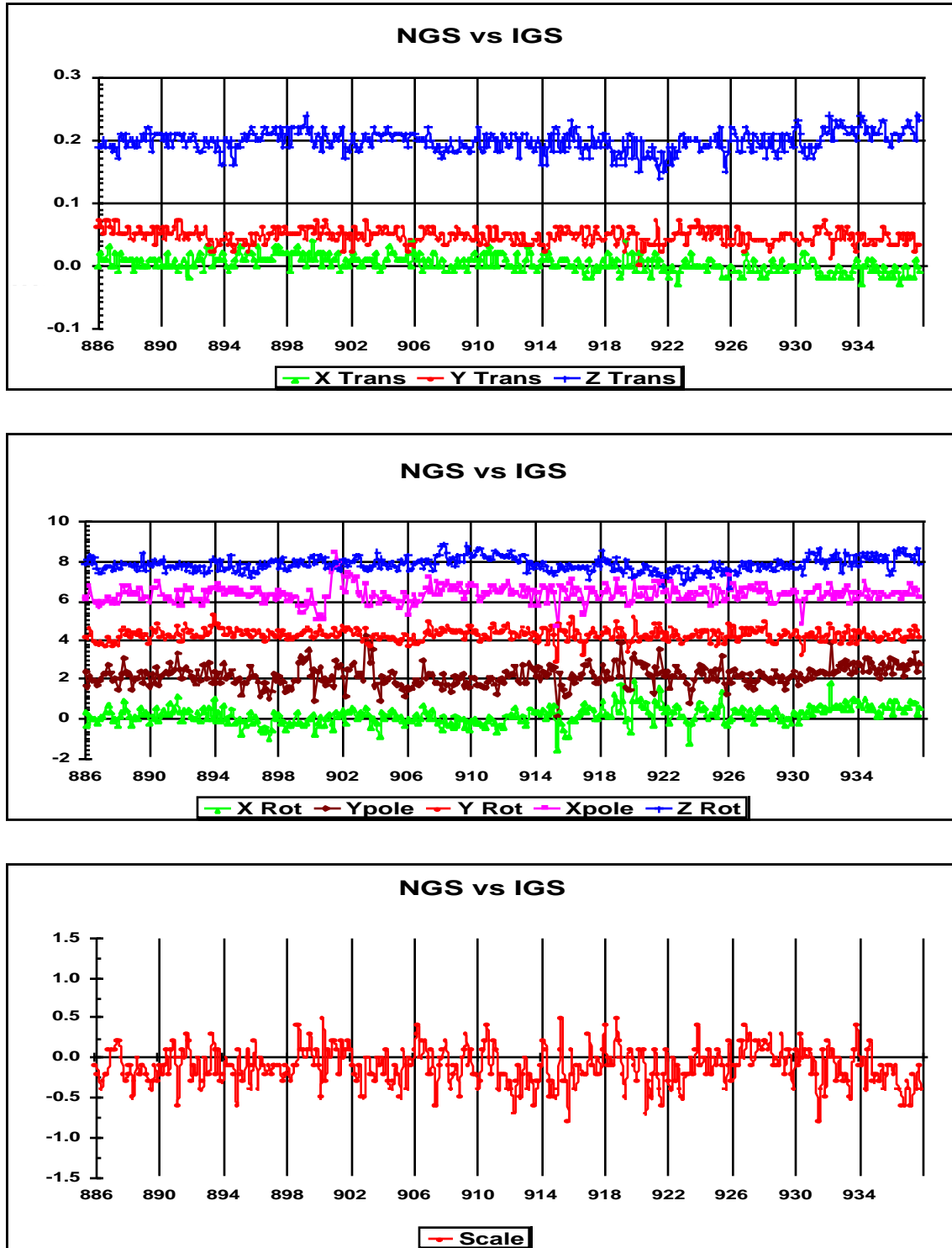
**Figure 20.** ESA 1997: Final daily seven-parameter Helmert transformations (X, Y and Z Translations are each offset by 0.1 metre; X, Y, Z Rotations and Y and X pole differences are each offset by 2 mas)



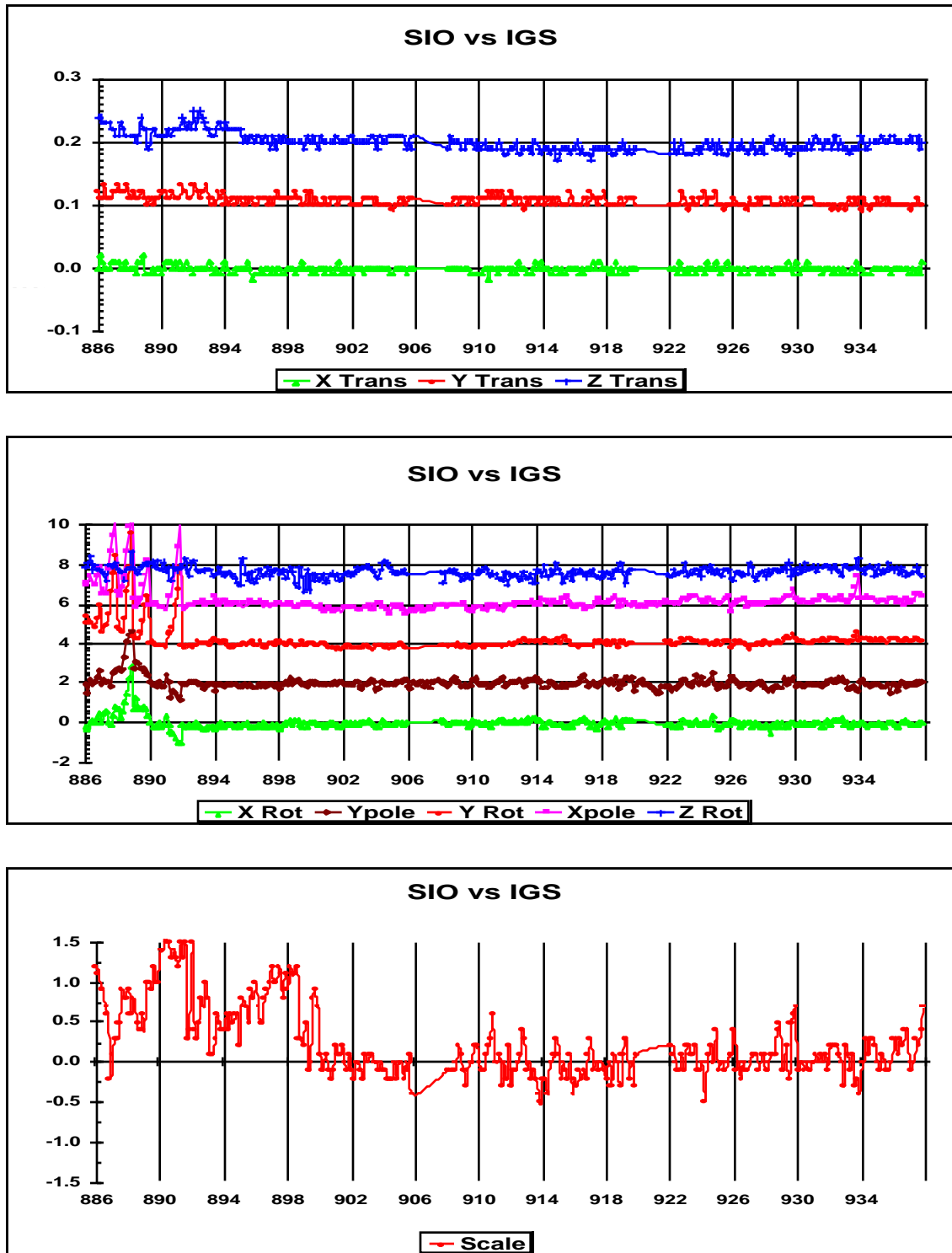
**Figure 21.** GFZ 1997: Final daily seven-parameter Helmert transformations (X, Y and Z Translations are each offset by 0.1 metre; X, Y, Z Rotations and Y and X pole differences are each offset by 2 mas)



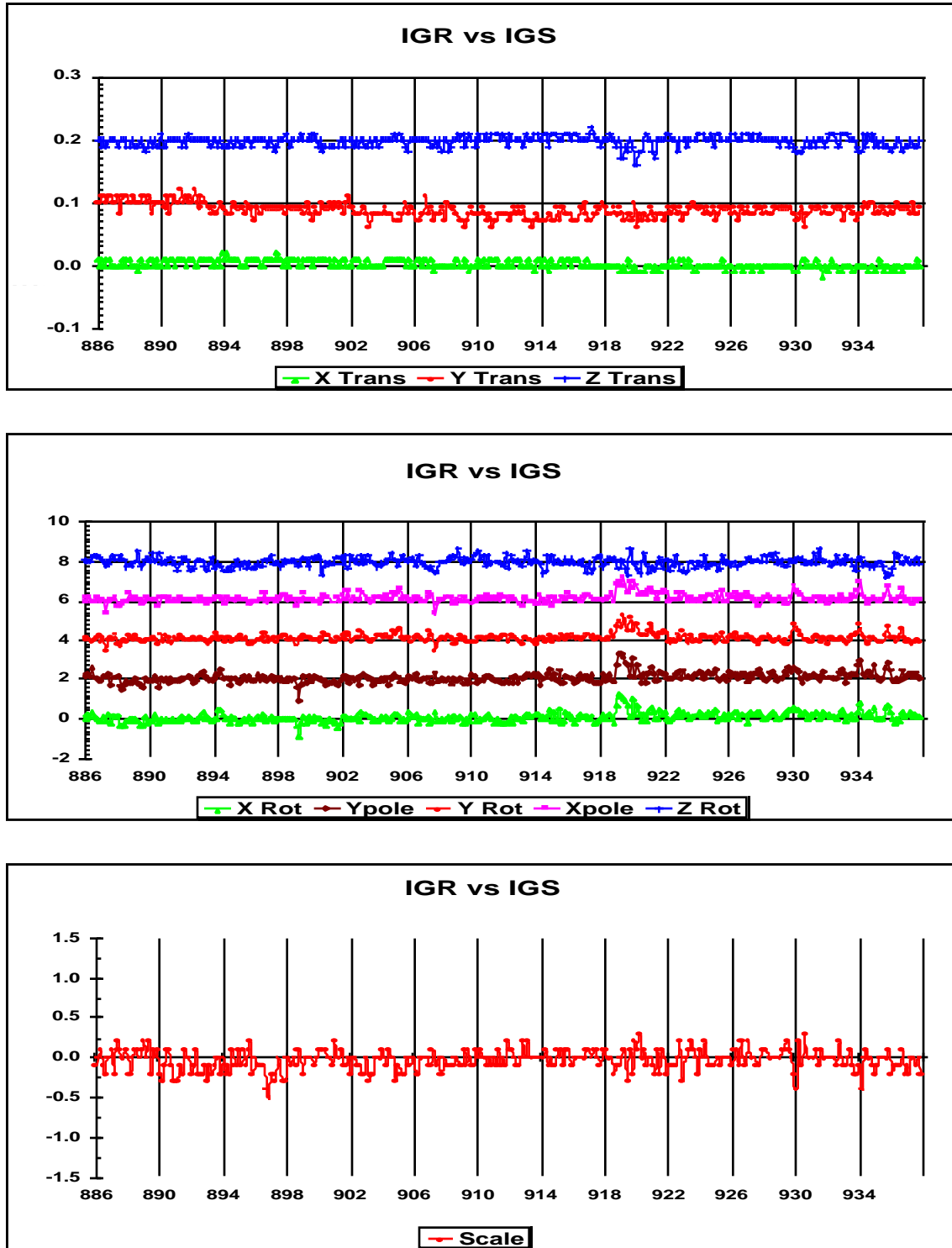
**Figure 22. JPL 1997:** Final daily seven-parameter Helmert transformations (X, Y and Z Translations are each offset by 0.1 metre; X, Y, Z Rotations and Y and X pole differences are each offset by 2 mas)



**Figure 23.** NGS 1997: Final daily seven-parameter Helmert transformations (X, Y and Z Translations are each offset by 0.1 metre; X, Y, Z Rotations and Y and X pole differences are each offset by 2 mas)



**Figure 24.** SIO 1997: Final daily seven-parameter Helmert transformations (X, Y and Z Translations are each offset by 0.1 metre; X, Y, Z Rotations and Y and X pole differences are each offset by 2 mas)



**Figure 25.** IGR 1997: Final daily seven-parameter Helmert transformations (X, Y and Z Translations are each offset by 0.1 metre; X, Y, Z Rotations and Y and X pole differences are each offset by 2 mas)