

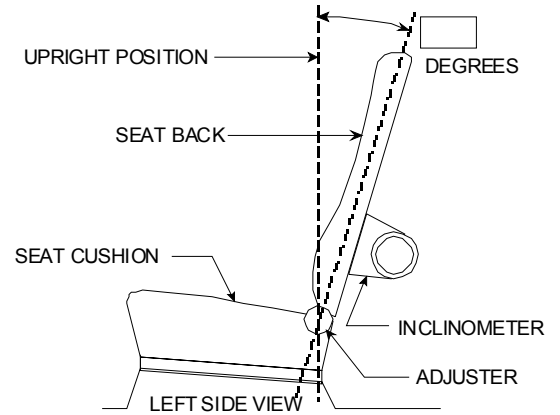


Table 1. Seating Positions<sup>1</sup> and Torso Angles

|                      |            | Left (Driver Side) | Center (if any) | Right             |
|----------------------|------------|--------------------|-----------------|-------------------|
| A1                   |            | (Driver)           |                 | (Front Passenger) |
| A2                   |            |                    |                 |                   |
| A3                   |            |                    |                 |                   |
| B                    |            |                    |                 |                   |
| C                    |            |                    |                 |                   |
| D                    |            |                    |                 |                   |
| Torso Angle (degree) | Front Row  |                    |                 |                   |
|                      | Second Row |                    |                 |                   |
|                      | Third Row  |                    |                 |                   |

Note: 1. All dimensions are in mm. If not, provide the unit used.

**NOMINAL DESIGN RIDING POSITION –**  
For adjustable driver, passenger, 2<sup>nd</sup> row and 3<sup>rd</sup> row seat backs, describe how to position the inclinometer to measure the seat back angle. Include description of the location of the adjustment latch detent if applicable. Indicate if applicable, how the detents are numbered (Is the first detent “0” or “1”?). Indicate if the seat back angle is measured with the dummy in the seat.



Seat back angle for driver's seat = \_\_\_ degrees  
Measurement Instructions:

---

---

---

Seat back angle for passenger's seat = \_\_\_ degrees  
Measurement Instructions:

---

---

---

Seat back angle for 2<sup>nd</sup> row seat = \_\_\_ degrees  
Measurement Instructions:

---

---

---

Seat back angle for 3<sup>rd</sup> row seat = \_\_\_ degrees  
Measurement Instructions:

---

---

---

SEATING REFERENCE POINT  
FOR FMVSS 225

(All dimensions in mm)

(Note: The Child Restraint Anchorage Location determines the 225 SRP locations)

Model Year: \_\_\_\_\_; Make: \_\_\_\_\_; Model: \_\_\_\_\_; Bod9y Style: \_\_\_\_\_  
Seat Style: Front row: \_\_\_\_\_; Second row: \_\_\_\_\_; Third row: \_\_\_\_\_

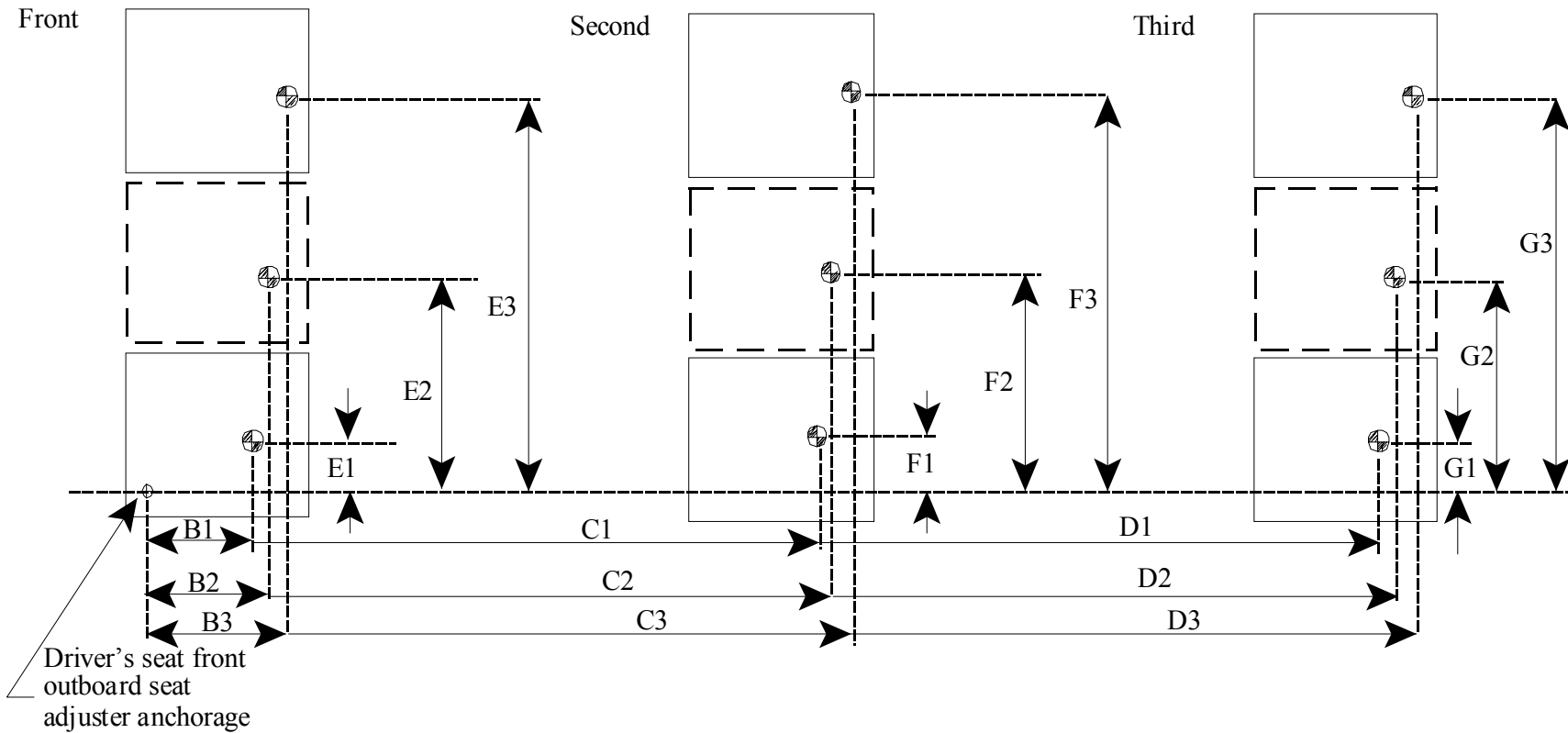


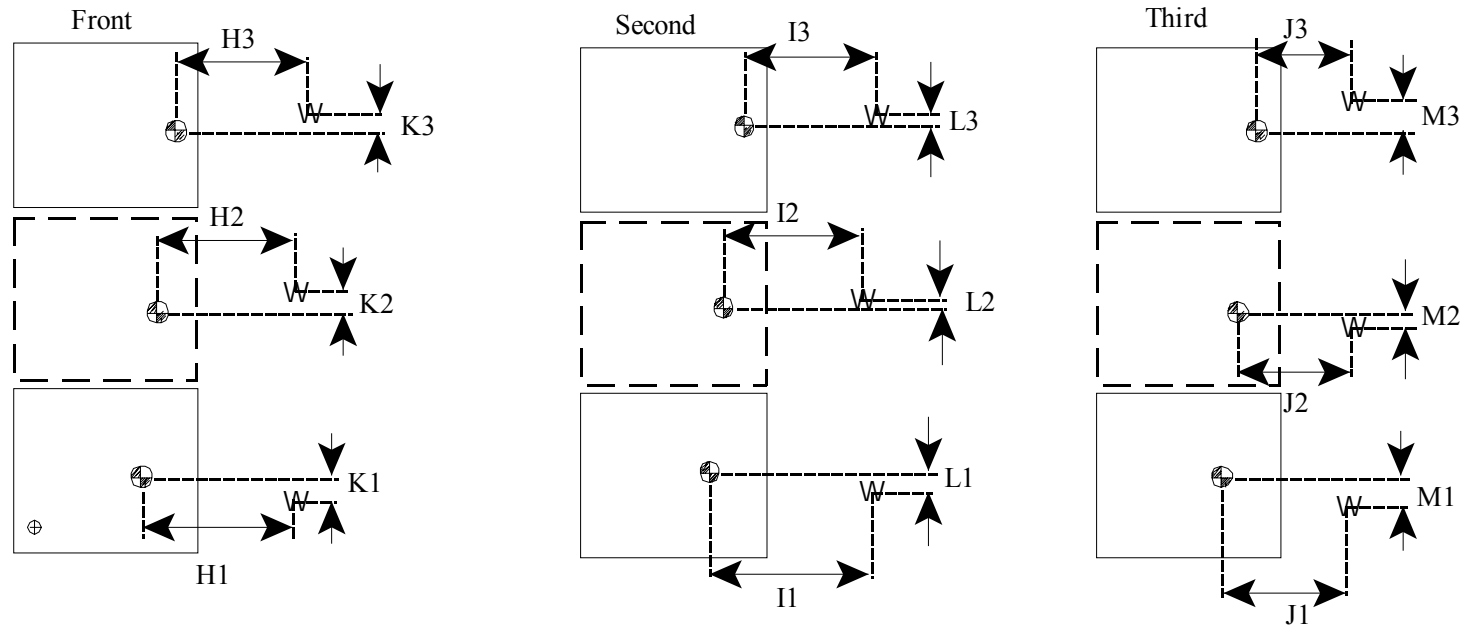
Table 2. Seating Reference Point and Tether Anchorage Locations

| Seating Reference Point (SRP) |    | Distance from Driver's front outboard seat adjuster anchorage <sup>1</sup> |
|-------------------------------|----|--|
| Front Row                     | B1 |  |
|                               | E1 |  |
|                               | B2 |  |
|                               | E2 |  |
|                               | B3 |  |
|                               | E3 |  |
| Second Row                    | C1 |  |
|                               | F1 |  |
|                               | C2 |  |
|                               | F2 |  |
|                               | C3 |  |
|                               | F3 |  |
| Third Row                     | D1 |  |
|                               | G1 |  |
|                               | D2 |  |
|                               | G2 |  |
|                               | D3 |  |
|                               | G3 |  |

Note: 1. Use the center of anchorage.

TETHER ANCHORAGE LOCATIONS  
FOR FMVSS 225  
(All dimensions in mm)

Model Year: \_\_\_\_\_; Make: \_\_\_\_\_; Model: \_\_\_\_\_; Body Style: \_\_\_\_\_  
Seat Style: Front row: \_\_\_\_\_; Second row: \_\_\_\_\_; Third row: \_\_\_\_\_



⊕: SRP

W: Tether anchorage

Note: 1. The location shall be measured at the center of anchorage.

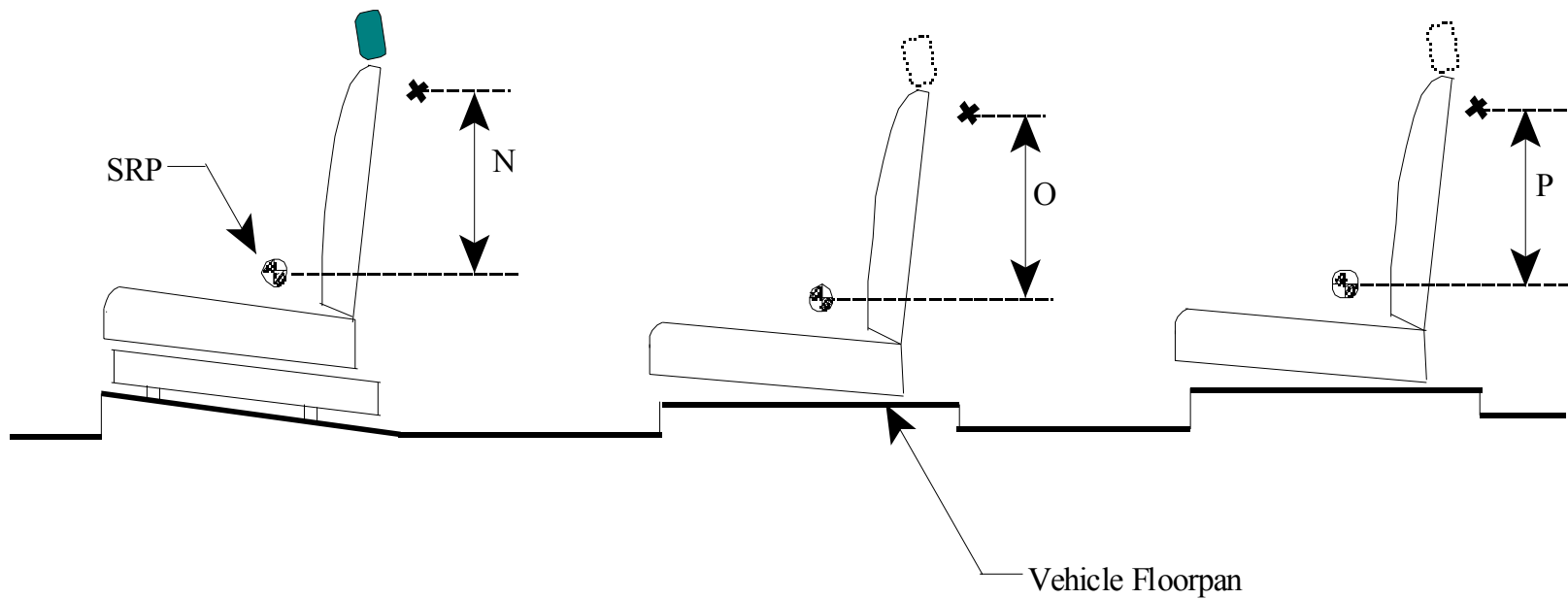
Table 3. Seating Reference Point and Tether Anchorage Locations

| Seating Reference Point (SRP) | Distance from SRP |  |
|-------------------------------|-------------------|--|
| Front Row                     | H1                |  |
|                               | K1                |  |
|                               | H2                |  |
|                               | K2                |  |
|                               | H3                |  |
|                               | K3                |  |
| Second Row                    | I1                |  |
|                               | L1                |  |
|                               | I2                |  |
|                               | L2                |  |
|                               | I3                |  |
|                               | L3                |  |
| Third Row                     | J1                |  |
|                               | M1                |  |
|                               | J2                |  |
|                               | M2                |  |
|                               | J3                |  |
|                               | M3                |  |

Note: 1. Use the center of anchorage.

TETHER ANCHORAGE LOCATIONS - VERTICAL  
FOR FMVSS 225  
(All dimensions in mm)

Model Year: \_\_\_\_\_; Make: \_\_\_\_\_; Model: \_\_\_\_\_; Body Style: \_\_\_\_\_  
Seat Style: Front row: \_\_\_\_\_; Second row: \_\_\_\_\_; Third row: \_\_\_\_\_



LEFT SIDE VIEW OF TEST VEHICLE



Table 4. Vertical Dimension For The Tether Anchorage

| Seating Row | Vertical Distance from Seating Reference Point |     |
|-------------|--|-----|
| Front Row   | N1 (Driver)                                    | N/A |
|             | N2 (Center)                                    |     |
|             | N3 (Right)                                     |     |
| Second Row  | O1 (Left)                                      |     |
|             | O2 (Center)                                    |     |
|             | O3 (Right)                                     |     |
| Third Row   | P1 (Left)                                      |     |
|             | P2 (Center)                                    |     |
|             | P3 (Right)                                     |     |

Note: 1. All dimensions are in mm. If not, provide the unit anchorage.

**Test Procedures Used for Compliance Tests**

Lower Anchorages

|   |                 |  |                                       |                |                |
|---|-----------------|--|---------------------------------------|----------------|----------------|
| For each seating location in each row record applicable FMVSS Section |                 | FMVSS 225 Section(s)   |                                       |                |                |
| Block 1   |                 | Lower anchorage location certification method used (Enter applicable section used in block 1 of each position by circling A or B)<br><br>A) 9.2.1 or B) 15.1.2.2                                       |                                       |                |                |
| Block 2   |                 | Lower anchorage dimension (Enter applicable section used in block 2 by circling A or B)<br><br>A) 9.1.1 or B) 15.1.2.2 (also provide roll and yaw angles)<br>pitch _____°<br>roll _____°<br>yaw _____° |                                       |                |                |
| Block 3   |                 | Lower anchorage marking (Enter applicable section used in block 3 by circling A or B)<br>A) 9.5 or B) 15.4   |                                       |                |                |
| Block 4   |                 | Strength requirement (Enter applicable section used in block 4 by circling A or B)<br><br>A) Section 9 or B) Section 15  |                                       |                |                |
| Front   | Driver          | N/A  |                                       |                |                |
|   | Center (if any) | Block 1<br>A B   | Block 2 A B<br>Pitch °, Roll °, Yaw ° | Block 3<br>A B | Block 4<br>A B |
|   | Right (if any)  | Block 1<br>A B   | Block 2 A B<br>Pitch °, Roll °, Yaw ° | Block 3<br>A B | Block 4<br>A B |
| Second  | Left            | Block 1<br>A B   | Block 2 A B<br>Pitch °, Roll °, Yaw ° | Block 3<br>A B | Block 4<br>A B |
|   | Center          | Block 1<br>A B   | Block 2 A B<br>Pitch °, Roll °, Yaw ° | Block 3<br>A B | Block 4<br>A B |
|   | Right (if any)  | Block 1<br>A B   | Block 2 A B<br>Pitch °, Roll °, Yaw ° | Block 3<br>A B | Block 4<br>A B |
| Third   | Left            | Block 1<br>A B   | Block 2 A B<br>Pitch °, Roll °, Yaw ° | Block 3<br>A B | Block 4<br>A B |
|   | Center          | Block 1<br>A B   | Block 2 A B<br>Pitch °, Roll °, Yaw ° | Block 3<br>A B | Block 4<br>A B |
|   | Right           | Block 1<br>A B   | Block 2 A B<br>Pitch °, Roll °, Yaw ° | Block 3<br>A B | Block 4<br>A B |
| Fourth  | Left            | Block 1<br>A B   | Block 2 A B<br>Pitch °, Roll °, Yaw ° | Block 3<br>A B | Block 4<br>A B |
|   | Center          | Block 1<br>A B   | Block 2 A B<br>Pitch °, Roll °, Yaw ° | Block 3<br>A B | Block 4<br>A B |
|   | Right           | Block 1<br>A B   | Block 2 A B<br>Pitch °, Roll °, Yaw ° | Block 3<br>A B | Block 4<br>A B |

**Test Procedures Used for Compliance Tests**

Tether Anchorages

|   |                 |  |   |   |   |   |   |   |         |   |   |         |   |   |   |
|---|-----------------|--|---|---|---|---|---|---|---------|---|---|---------|---|---|---|
| For each seating location in each row record applicable FMVSS Section |                 | FMVSS Section(s) - Req.  |   |   |   |   |   |   |         |   |   |         |   |   |   |
| Block 1   |                 | Tether anchorage location certification method used (Enter applicable section used in block 1 by circling A, B, C, D, E or F)<br><br>A) 6.2.1 B) 6.2.1.1 C) 6.2.1.2 D) 6.2.2 E) 6.2.2.1 F) 6.2.2.2 |   |   |   |   |   |   |         |   |   |         |   |   |   |
| Block 2   |                 | Number or tether anchorages based upon the applicable section (Enter applicable section used in block 2 by circling A or B)<br><br>A) 4.4 B) 4.5   |   |   |   |   |   |   |         |   |   |         |   |   |   |
| Block 3   |                 | Tether anchorage strength requirement (Enter applicable section used in block 3 by circling A, B, or C)<br><br>A) 6.3.1 B) 6.3.2 C) 6.3.4  |   |   |   |   |   |   |         |   |   |         |   |   |   |
| Front   | Driver          | N/A  |   |   |   |   |   |   |         |   |   |         |   |   |   |
|   | Center (if any) | Block 1  | A | B | C | D | E | F | Block 2 | A | B | Block 3 | A | B | C |
|   | Right (if any)  | Block 1  | A | B | C | D | E | F | Block 2 | A | B | Block 3 | A | B | C |
| Second  | Left            | Block 1  | A | B | C | D | E | F | Block 2 | A | B | Block 3 | A | B | C |
|   | Center          | Block 1  | A | B | C | D | E | F | Block 2 | A | B | Block 3 | A | B | C |
|   | Right           | Block 1  | A | B | C | D | E | F | Block 2 | A | B | Block 3 | A | B | C |
| Third   | Left            | Block 1  | A | B | C | D | E | F | Block 2 | A | B | Block 3 | A | B | C |
|   | Center          | Block 1  | A | B | C | D | E | F | Block 2 | A | B | Block 3 | A | B | C |
|   | Right           | Block 1  | A | B | C | D | E | F | Block 2 | A | B | Block 3 | A | B | C |
| Fourth  | Left            | Block 1  | A | B | C | D | E | F | Block 2 | A | B | Block 3 | A | B | C |
|   | Center          | Block 1  | A | B | C | D | E | F | Block 2 | A | B | Block 3 | A | B | C |
|   | Right           | Block 1  | A | B | C | D | E | F | Block 2 | A | B | Block 3 | A | B | C |