

# Great Falls Transit District (GFT)

3905 North Star Boulevard  
Great Falls, MT 59403-2353  
(406)727-0382

Chief Executive Officer: Marlys J. Sittner,  
General Manager  
ID Number: 8012

## System Wide Information

### General Information

#### Urbanized Area (UZA) Statistics - 1990 Census

<b>Great Falls, MT</b>	
Square Miles	20
Population	63,506
Population Ranking Out of 405 UZA's	322

#### Service Area Statistics

Square Miles	18
Population	64,800

#### Service Consumption

Annual Passenger Miles	1,320,696
Annual Unlinked Trips	478,786
Average Weekday Unlinked Trips	1,747
Average Saturday Unlinked Trips	674
Average Sunday Unlinked Trips	0

#### Service Supplied

Annual Vehicle Revenue Miles	491,580
Annual Vehicle Revenue Hours	39,656
Total Fleet	32
Vehicles Operated in Maximum Service	29
Base Period Requirement	8

#### Vehicles Operated in Maximum Service

	Directly Operated	Purchased Transportation
Bus	14	0
Demand Response	0	15
<b>Total</b>	<b>14</b>	<b>15</b>

### Financial Information

#### Sources of Operating Funds Expended

Passenger Fares	\$126,075
Local Funds	884,560
State Funds	0
Federal Assistance	360,336
Other Funds	81,664
<b>Total Operating Funds Expended</b>	<b>\$1,452,635</b>

#### Summary of Operating Expenses

Salaries/Wages/Benefits	\$869,162
Materials & Supplies	203,500
Purchased Transportation	101,778
Other Operating Expenses	278,195
<b>Total Operating Expenses</b>	<b>\$1,452,635</b>

Reconciling Cash Expenditures	\$0
-------------------------------	-----

#### Sources of Capital Funds Expended

Local Funds	\$1,108,526
State Funds	23,052
Federal Assistance	360,336
<b>Total Capital Funds Expended</b>	<b>\$1,491,914</b>

#### Uses of Capital Funds

	Rolling Stock	Facilities and Other	Total
Bus	\$124,148	\$1,367,766	\$1,491,914
Demand Response	0	0	0
<b>Total</b>	<b>\$124,148</b>	<b>\$1,367,766</b>	<b>\$1,491,914</b>

## Modal Information

### Characteristics

	Bus	Demand Response
Operating Expense	\$1,350,857	\$101,778
Capital Funding	\$1,491,914	\$0
Annual Passenger Miles	1,293,464	27,232
Annual Vehicle Revenue Miles	464,348	27,232
Annual Unlinked Trips	467,944	10,842
Average Weekday Unlinked Trips	1,708	39
Annual Vehicle Revenue Hours	36,192	3,464
Fixed Guideway Directional Route Miles	0.0	N/A
Total Fleet	17	15
Average Fleet Age in Years	7.6	0.0
Vehicles Operated in Maximum Service	14	15
Peak to Base Ratio	1.8	N/A
Percent Spares	21%	0%

### Performance Measures

#### Service Efficiency

Operating Expense/Vehicle Revenue Mile	\$2.91	\$3.74
Operating Expense/Vehicle Revenue Hour	\$37.32	\$29.38

#### Cost Effectiveness

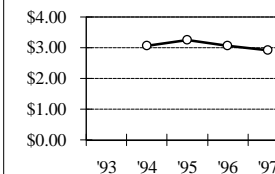
Operating Expense/Passenger Mile	\$1.04	\$3.74
Operating Expense/Unlinked Passenger Trip	\$2.89	\$9.39

#### Service Effectiveness

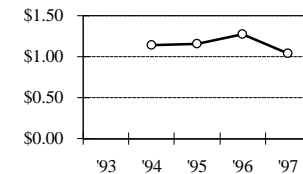
Unlinked Passenger Trips/Vehicle Revenue Mile	1.01	0.40
Unlinked Passenger Trips/Vehicle Revenue Hour	12.93	3.13

#### Bus

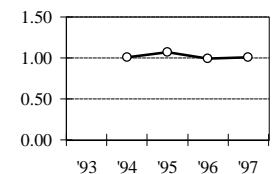
##### Operating Expense Per Vehicle Revenue Mile



##### Operating Expense Per Passenger Mile

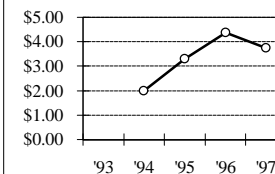


##### Passenger Trips Per Vehicle Revenue Mile

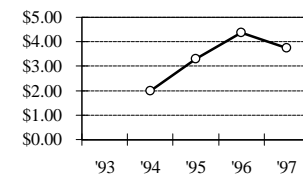


#### Demand Response

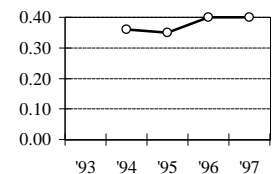
##### Operating Expense Per Vehicle Revenue Mile



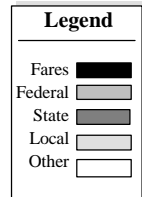
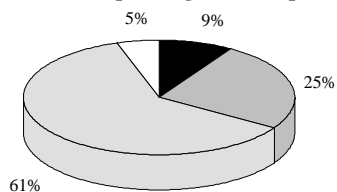
##### Operating Expense Per Passenger Mile



##### Passenger Trips Per Vehicle Revenue Mile



### Sources of Operating Funds Expended



### Sources of Capital Funds Expended

