



# Commercial Remote Sensing

Corena Alexander, Deputy Chief, Sensor Assimilation  
Division (ASX)

25 March 2008

JACIE: Civil Commercial Imagery Evaluation Workshop

[Corena.Alexander@nga.mil](mailto:Corena.Alexander@nga.mil)



# Agenda

- Why Commercial Remote Sensing (CRS)
- CRS Capabilities/Programs
- Since Last Year
- What Lies Ahead



# The Importance of CRS

## -- Ever Increasing

Support during Political Crisis

- Taepodong Missile Incident

Support to Military Operations

- Sharing with Coalition Partners and Locals

Support to natural disaster recovery operations

- Bangladesh
- California Wildfires
- Cyclone Sidr
- Hurricanes Rita and Katrina

Special Events

- Super bowl
- Olympics



Quickbird © 2006DigitalGlobe



WoldViiew 1 © 2007DigitalGlobe



Qickbird ©200DigitalGlobe



# CRS Capabilities

## High Resolution

GeoEye - IKONOS

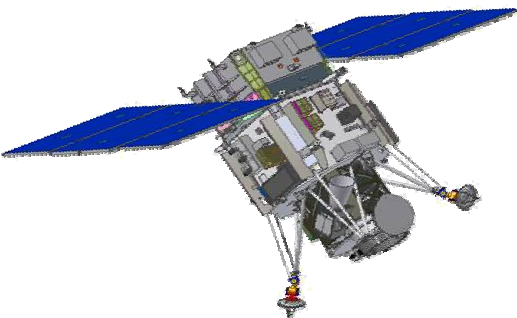
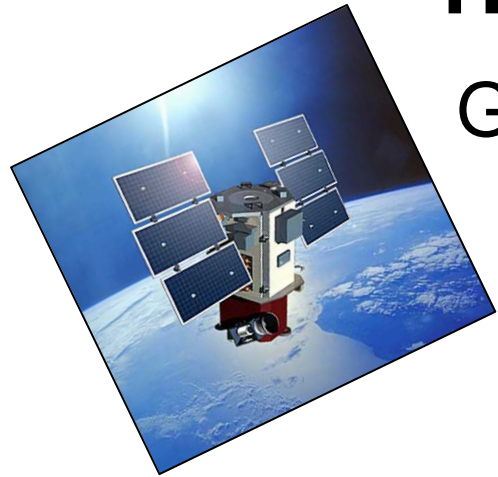
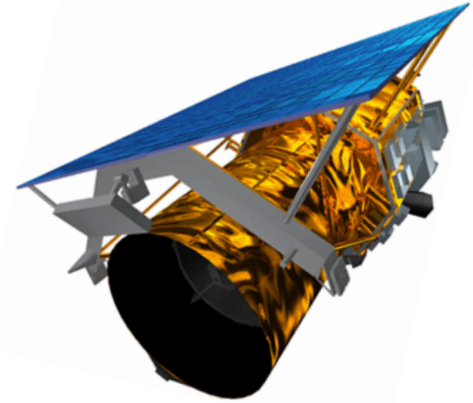
DigitalGlobe - Quickbird

GeoEye - OrbView 3 (archive only)

DigitalGlobe - WorldView 1

GeoEye - GeoEye 1 (2008)

NGA has contracts to buy imagery from each of these platforms





# CRS Capabilities

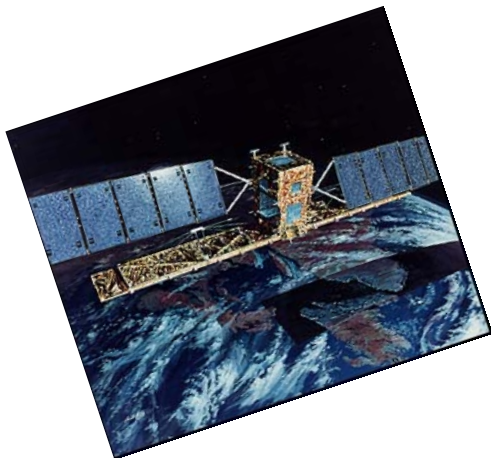
## Medium Resolution

ESA - Spot 4 and 5

Indian Remote Sensing

MDA Radarsat 1

USGS/NASA satellites



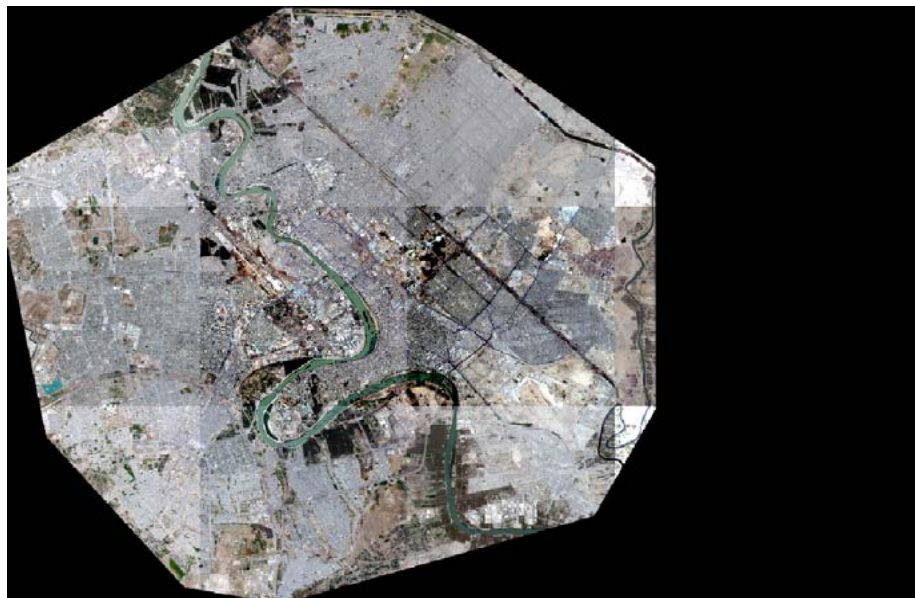
NGA has contracts to buy imagery from each of these platforms



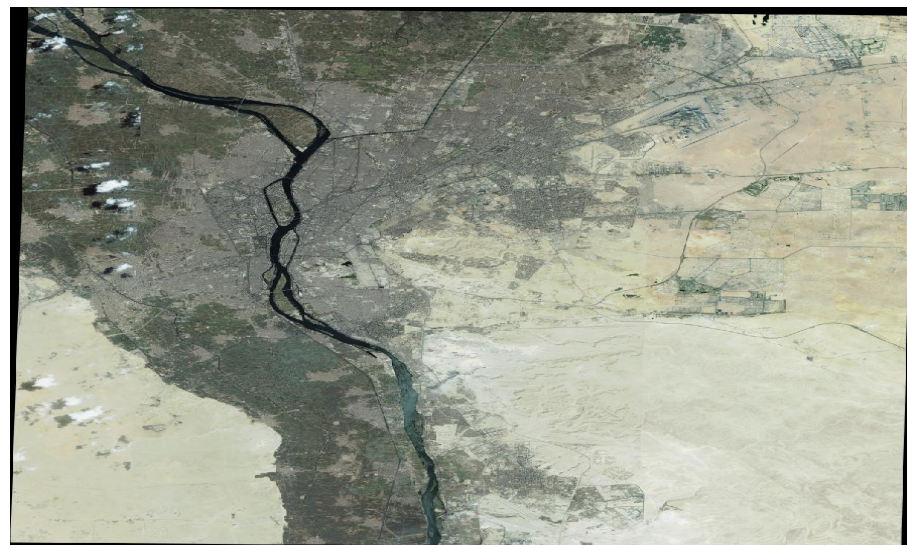
# Value Added Program/Products

*Utilizes the Nextview contract to provide imagery derived products (IDPs) to customers*

- CitySphere™
- 3 Day Orthomosaic
- “Medium Density” orthomosaic datasets



CitySphere™ © 2007Digital Globe



Quickbird© 2007DigitalGlobe



# Since Last Year

- Support Activities
  - Interagency Partnerships (SMOC, SET, IADIWG, GWG, etc.)
  - CRS Guide Version 2 Published September 2007
  - Outreach Program Growth
    - Support to DoD Commands & Services/NATO/Civil Agencies
    - 55 site visits in FY07; 25% increase over FY06
  - First CRS training course offered at NGA College  
“Sensor Enabling Technology (SET) 105: Introduction to Commercial Remotely Sensed Imagery”



# Since Last Year (cont.)

- Interoperability/Standards
  - NITF 2.1, JPEG 2000 – Fully implemented
  - GeoTIFF implementation profile in GWG approval process
- Contracts: Service Level Agreements being explored
- New Sensors
  - WorldView 1 launched September 2007
  - Foreign SAR launches:
    - RadarSat 2
    - TerraSARX
    - Cosmo SkyMed





# What Lies Ahead

- Support Activities
  - Continued commitment to interagency partnerships
  - CRS Guide Version 3
  - Expansion and strengthening of CRS training
- Standards/Interoperability
  - Approval and implementation of GeoTIFF Standard (GWG)
- Contracts
  - NextView Follow-on
  - Further explore service level agreements



# What Lies Ahead (cont.)

- New Sensors
  - GeoEye 1 launch - summer 2008
  - WorldView 2 launch – 2009
  - Exploration & evaluation of alternative sources (e.g. Foreign SAR, Airborne, etc.)



# Questions?

[www.nga.mil](http://www.nga.mil)

Approved for Public Release 08-243

»» THE UNITED STATES OF AMERICA