

VII. APPENDICES

A. Additional Vegetation Tables

Table A1. Overview of species encountered during all vegetation sampling at the Tranquillity HRS site.

Family	Binomial ¹	Life history ²	Origin ³	Pre-project inventory ⁴				HRS sampling ⁶		
				Sec. 10	Sec. 15	Sec. 16	Apnd E ⁵	1999	2000	2001
Amaranthaceae	<i>Amaranthus</i> sp.	AH	N.A.	-	-	+	+	-	-	-
Asclepiadaceae	<i>Asclepias fascicularis</i>	PH	N	-	-	-	-	-	+ ⁷	-
Asteraceae	<i>Carthamus tinctorius</i>	AH	I	+	-	-	+	-	-	-
	<i>Centaurea solstitialis</i>	AH	I	+	-	+	+	-	-	-
	<i>Conyza canadensis</i>	AH	N	+	+	-	+	-	-	-
	<i>Helianthus annuus</i>	AH	N	+	+	-	+	-	-	-
	<i>Hemizonia pungens</i> *	AH	N	-	-	-	-	-	-	+
	<i>Isocoma acradenia</i> *	S	N	-	-	-	-	-	+	-
	<i>Lactuca serriola</i>	AH	I	+	+	-	+	+	+	+
	<i>Lasthenia californica</i> *	AH	N	-	-	-	-	-	+	+
	<i>Microseris</i> sp.	AH (?)	N	-	-	+	-	-	-	-
	<i>Picris echioides</i>	A/PH	I	-	-	-	-	-	-	-
	<i>Senecio vulgaris</i>	AH	I	-	-	+	+	+	+	-
	<i>Sonchus asper</i>	AH	I	+	-	-	+	+	-	-
	<i>Sonchus oleraceus</i>	AH	I	+	+	+	+	+	+	+
	<i>Xanthium strumarium</i>	AH	N	-	-	+	+	-	-	-
Boraginaceae	<i>Amsinckia menziesii</i>	AH	N	-	-	-	-	-	-	+
	<i>Heliotropium curassavicum</i> *	PH	N	-	-	-	+	-	-	-
Brassicaceae	<i>Brassica nigra</i>	AH	I	-	-	-	+	+	+	+
	<i>Capsella bursa-pastoris</i>	AH	I	-	+	-	+	+	+	+
	<i>Hirschfeldia incana</i>	PH	I	+	-	+	+	-	-	-
	<i>Raphanus sativus</i>	A/BH	I	+	-	-	+	-	-	-
	<i>Sisymbrium irio</i>	AH	I	-	-	-	+	+	+	+
Chenopodiaceae	<i>Atriplex argentea</i>	AH	N	+	+	-	-	+	+	+
	<i>Atriplex patula</i>	AH	N	-	-	-	-	-	-	-
	<i>Atriplex polycarpa</i> *	S	N	-	-	-	-	-	-	-
	<i>Beta vulgaris</i>	PH	I	-	-	-	+	+	+	+
	<i>Chenopodium album</i>	AH	I	-	-	+	+	+	+	-
	<i>Monolepis nuttalliana</i>	AH	N	-	-	-	-	-	+	-

Land Retirement Demonstration Program: Year 3

Family	Binomial ¹	Life history ²	Origin ³	Pre-project inventory ⁴				HRS sampling ⁶		
				Sec. 10	Sec. 15	Sec. 16	Apnd E ⁵	1999	2000	2001
Chenopodiaceae	<i>Salsola tragus</i>	AH	I	+	-	-	+	-	-	+
	<i>Suaeda moquini</i> *	PH	N	-	-	-	-	-	+	+
Convolvulaceae	<i>Calystegia</i> sp.	V (?)	N	-	-	+	-	-	-	-
	<i>Convolvulus arvensis</i>	PH/V	I	-	-	-	+	+	+	-
Fabaceae	<i>Medicago sativa</i>	PH	I	-	-	-	-	-	-	+
	<i>Mellilotus indica</i>	AH	I	+	+	+	+	+	+	+
Frankeniaceae	<i>Frankenia salina</i> *	PH	N	-	-	-	-	-	+	-
Geraniaceae	<i>Erodium cicutarium</i>	AH	I	-	-	-	+	+	+	+
Hydrophyllaceae	<i>Phacelia distans</i>	AH	N	-	-	-	+	+	+	+
Juncaceae	<i>Juncus</i> sp.	N.A.	N.A.	-	-	-	+	-	-	-
Malvaceae	<i>Eremalche parryi</i>	AH	N	-	-	-	+	+	+ ⁷	-
	<i>Malva parviflora</i>	AH	I	-	-	-	-	+	+	-
	<i>Malvella leprosa</i>	PH	N	-	-	+	+	-	+	-
Onagraceae	<i>Epilobium brachycarpum</i>	AH	N	+	-	-	+	-	-	-
Poaceae	<i>Avena fatua</i>	AH	I	+	-	+	+	+	+	+
	<i>Bromus carinatus</i> *	AH	N	-	-	-	-	-	+	+
	<i>Bromus diandrus</i>	AH	I	-	-	-	-	-	-	+
	<i>Bromus hordeaceus</i>	AH	I	+	-	-	+	-	-	-
	<i>Bromus madritensis</i>	AH	I	+	-	+	+	+	+	+
	<i>Crypsis schoenoides</i>	AH	I	-	-	+	+	-	-	-
	<i>Cynodon dactylon</i>	PH	I	-	-	-	-	-	-	-
	<i>Distichlis spicata</i>	PH	N	+	-	-	+	-	-	-
	<i>Hordeum depressum</i>	AH	N	-	-	-	+	+	+	-
	<i>Hordeum marinum</i>	AH	I	+	-	+	+	-	-	-
	<i>Hordeum murinum</i>	AH	I	+	-	-	+	+	+	+
	<i>Hordeum vulgare</i>	AH	C	-	-	-	+	+	+	+
	<i>Leptochloa uninervia</i>	AH	N	-	-	+	+	-	-	-
<i>Leymus triticoides</i> *	PH	N	-	-	-	-	-	-	+	
<i>Phalaris minor</i>	AH	I	+	+	+	+	-	+	+ ⁸	
<i>Polypogon monspeliensis</i>	AH	I	-	+	-	+	-	-	-	
<i>Vulpia microstachys</i> *	AH	N	-	-	-	-	-	+	+	
Polemoniaceae	<i>Gilia tricolor</i>	AH	N	-	-	-	-	-	-	-
Polygonaceae	<i>Polygonum</i> sp.	N.A.	N.A.	-	-	-	-	-	-	-
	<i>Rumex crispus</i>	PH	I	+	-	+	+	-	-	-
Sapotaceae	<i>Bassia hyssopifolia</i>	AH	I	-	-	-	-	-	-	+
Solanaceae	<i>Physalis lanceifolia</i>	AH	I	+	-	+	+	-	-	-
	<i>Solanum americanum</i>	A/PH	N	-	-	-	-	-	+	-
Tamaricaceae	<i>Tamarix ramosissima</i>	T or S	I	-	-	-	+	-	-	-

Land Retirement Demonstration Program: Year 3

Table A2. Overview of species encountered in Tranquillity HRS vegetation sampling, 2001. Species marked with an asterisk are imprinted species. Roman numerals indicate study Block. Numerical values in cells indicate mean percent cover for that particular species in that plot.

Taxon code	O ²	Contoured/imprinted					Not contoured/ imprinted					Contoured/not imprinted					Not contoured/not Imprinted				
		I	II	III	IV	V	I	II	III	IV	V	I	II	III	IV	V	I	II	III	IV	V
AMME	N	-	-	-	-	-	-	-	-	-	-	-	-	-	-	-	0.13	-	-	-	-
ATAR	N	0.19	-	18.90	0.15	0.02	1.54	-	3.23	6.29	-	0.13	-	0.25	0.63	-	-	0.02	3.56	4.29	0.02
AVFA	I	0.13	2.00	-	-	-	-	1.69	4.46	-	0.13	0.19	3.19	6.19	-	1.25	-	14.10	21.04	-	-
BAHY	I	-	-	-	-	-	-	-	-	-	-	-	-	-	0.02	-	-	-	-	-	
BEVU	I	7.15	-	-	-	0.13	-	-	-	-	-	0.02	-	-	-	-	-	-	-	-	
BRCA*	N	-	-	0.02	-	-	-	-	-	0.13	-	-	-	-	-	-	-	-	-	-	
BRDI	I	0.02	-	-	-	-	-	-	0.13	-	-	-	-	-	-	-	-	-	-	-	
BRMA	I	11.65	-	-	-	-	25.31	0.02	0.02	-	-	18.46	-	-	3.23	-	66.67	-	-	-	0.25
BRNI	I	0.90	-	-	-	16.19	0.79	-	0.02	3.54	4.94	0.02	-	-	-	38.23	0.58	0.71	-	0.13	-
CABU	I	-	2.63	-	0.13	0.21	-	8.19	0.50	-	0.13	-	1.35	-	-	0.25	-	1.15	4.31	-	0.04
ERCI	I	1.19	-	-	-	-	0.33	-	-	-	-	0.52	-	-	-	-	1.00	-	-	-	-
HEPU*	N	-	-	-	-	-	-	-	0.02	-	-	-	-	-	-	-	-	-	-	-	-
HOMU	I	5.13	-	-	-	0.13	21.73	-	0.02	-	0.75	33.75	-	-	2.56	3.54	1.04	-	-	-	0.63
HOVU	C	0.56	16.31	1.94	0.02	0.15	0.19	13.58	4.48	0.81	-	0.19	6.46	6.19	0.15	-	0.56	17.60	1.31	0.15	-
LACA*	N	-	0.15	0.02	-	-	0.06	0.21	0.04	0.04	-	-	-	-	-	-	-	-	-	-	-
LASE	I	0.04	0.56	1.46	1.02	-	0.04	0.17	0.90	0.21	-	0.06	0.27	1.40	-	-	-	1.83	2.19	4.63	-
LETR	N	0.02	0.02	-	-	-	-	0.06	0.15	-	-	-	-	-	-	-	-	-	-	-	-
MEIN	I	3.94	0.15	0.69	-	-	5.88	0.02	2.98	-	-	7.17	0.02	6.44	-	-	9.13	1.52	2.77	-	-
MESA	I	-	-	-	-	-	-	-	-	-	-	-	-	-	-	-	-	-	-	0.02	-
PHSP	NA	0.08	-	-	-	-	0.02	-	-	-	-	0.13	-	-	-	-	-	0.02	-	-	0.13
PHDI	N	1.52	-	-	-	-	-	-	-	-	-	-	-	-	-	-	-	-	-	-	-
SATR	I	-	-	4.33	0.65	-	-	-	-	-	-	-	-	0.75	-	-	0.13	-	1.71	-	-
SIIR	I	-	9.04	7.50	1.44	19.42	-	11.92	6.35	13.96	19.06	-	15.77	0.88	16.54	27.69	-	4.94	5.85	9.08	53.33
SOOL	I	0.10	0.63	1.92	0.13	-	0.02	0.23	1.65	-	-	0.02	0.02	0.13	-	-	0.02	0.15	1.00	1.31	-
SUMO*	N	-	0.63	0.02	-	-	-	-	-	-	-	-	-	-	-	-	-	-	-	-	-
VUMI*	N	-	0.94	-	-	-	0.02	0.71	0.13	-	-	-	-	-	-	-	-	-	-	-	-
Spp. Rich.³:		15	11	10	7	7	12	11	16	7	5	12	7	8	6	5	9	10	9	7	6

1. Taxon Code: AMME, Amsinckia menziesii; ATAR, Atriplex argentea; AVFA, Avena fatua; BAHY, Bassia hyssopifolia; BEVU, Beta vulgaris; BRCA, Bromus carinatus; BRDI, Bromus diandrus; BRMA, Bromus madritensis subsp. rubens; BRNI, Brassica nigra; CABU, Capsella bursa-pastoris; ERCI, Erodium cicutarium; HEPU, Hemizonia pungens; HOMU, Hordeum murinum; HOVU, Hordeum vulgaris (Barley); LACA, Lasthenia californica; LASE, Lactuca serriola; LETR, Leymus triticoides; MEIN, Melilotus indica; MESA, Medicago sativa; PHSP, Phalaris sp.; PHDI, Phacelia distans; SATR, Salsola tragus; SIIR, Sisymbrium irio; SOOL, Sonchus oleraceus; SUMO, Suaeda moquinii; VUMI, Vulpia microstachys.

2. Origin: N, Native; I, Introduced; C, Cultivar (Barley); NA, not known.

3. Species Richness: number of species observed in a particular plot.

Table A3. Frequency of species noted during vegetation sampling, 2001. Species marked with an asterisk are those included in the seed mix.

Species	Origin	Plot¹	Quadrat²
<i>Amsinckia menziesii</i>	Native	1	1
<i>Atriplex argentea</i>	Native	14	50
<i>Avena fatua</i>	Introduced	11	82
<i>Bassia hyssopifolia</i>	Introduced	1	1
<i>Beta vulgaris</i>	Introduced	3	13
<i>Bromus carinatus</i> *	Native	2	2
<i>Bromus diandrus</i>	Introduced	2	2
<i>Bromus madritensis</i> subsp. <i>rubens</i>	Introduced	8	94
<i>Brassica nigra</i>	Introduced	11	72
<i>Capsella bursa-pastoris</i>	Introduced	11	70
<i>Erodium cicutarium</i>	Introduced	4	28
<i>Hemizonia pungens</i> *	Native	1	1
<i>Hordeum murinum</i>	Introduced	10	82
<i>Hordeum vulgare</i> (Barley)	Introduced	17	159
<i>Lasthenia californica</i> *	Native	6	15
<i>Lactuca serriola</i>	Introduced	14	76
<i>Leymus triticoides</i> *	Native	4	7
<i>Melilotus indica</i>	Introduced	12	98
<i>Medicago sativa</i>	Introduced	1	1
<i>Phalaris</i> sp.	Introduced	5	13
<i>Phacelia distans</i>	Native	1	5
<i>Salsola tragus</i>	Introduced	5	13
<i>Sisymbrium irio</i>	Introduced	16	264
<i>Sonchus oleraceus</i>	Introduced	14	40
<i>Suaeda moquinii</i>	Native	2	2
<i>Vulpia microstachys</i>	Native	4	18
Summed Frequency of Introduced Species:			1,108
Summed Frequency of Native Species:			101
1. Frequency of plots in which a particular species was noted.			
2. Frequency of quadrats in which a particular species was noted.			

Land Retirement Demonstration Program: Year 3

Table A4. Overview of species encountered during the pre-project inventory of the Atwell Island site and baseline vegetation sampling of the Atwell Island HRS plots.

Freq. ¹	Cover ²	Site cover ³	Species/morpho-species	Family	Origin ⁴	Life history ⁵	A ⁶	B ⁷	C ⁸
381	30.96	31.120	<i>Hordeum vulgare</i> {Barley}	Poaceae	B	AH	-	-	-
208	4.52	2.497	<i>Hordeum murinum</i>	Poaceae	I	AH	+	+	+
168	5.20	2.289	<i>Mellilotus indica</i>	Fabaceae	I	AH	+	+	+
124	1.75	0.565	<i>Amsinckia menziesii</i>	Boraginaceae	N	AH	+	+	+
124	6.42	2.107	<i>Phalaris minor</i>	Poaceae	I	AH	-	+	+
114	10.14	3.089	<i>Avena sativa</i>	Poaceae	I	A/P	-	-	-
111	3.63	1.059	<i>Erodium cicutarium</i>	Geraniaceae	I	AH	+	+	+
77	5.31	1.065	<i>Medicago polymorpha</i>	Fabaceae	I	AH	-	-	-
52	1.21	0.164	<i>Chenopodium</i> sp.	Chenopodiaceae	N.A.	H	-	-	-
51	1.65	0.219	<i>Sisymbrium irio</i>	Brassicaceae	I	AH	+	+	+
50	0.80	0.104	<i>Bromus m. subsp. rubens</i>	Poaceae	I	AH	+	+	+
49	0.86	0.109	<i>Capsella bursa-pastoris</i>	Brassicaceae	I	AH	-	-	-
38	0.62	0.061	Unknown Cordate Leaved	N.A.	N.A.	N.A.	-	-	-
36	1.88	0.176	<i>Atriplex argentea</i>	Chenopodiaceae	N	AH	+	+	+
36	0.71	0.066	<i>Vulpia myuros</i>	Poaceae	I	AH	-	-	-
24	0.92	0.057	Narrow Leaf Grass	Poaceae	N.A.	H	-	-	-
24	0.71	0.044	<i>Sonchus oleraceus</i>	Asteraceae	I	AH	-	+	-
24	4.29	0.268	<i>Spergularia</i> sp.	Caryophyllaceae	N.A.	H	-	-	-
22	1.07	0.061	<i>Poa annua</i>	Poaceae	I	AH	-	-	-
21	7.50	0.410	<i>Polygonum</i> sp.	Polygonaceae	N.A.	H	-	-	-
18	3.61	0.169	<i>Polypogon monspeliensis</i>	Poaceae	I	AH	-	+	-
14	1.21	0.044	<i>Lactuca serriola</i>	Asteraceae	I	AH	+	+	-
12	26.88	0.840	<i>Bassia hyssopifolia</i>	Chenopodiaceae	I	AH	+	+	+
11	2.09	0.060	<i>Bromus diandrus</i>	Poaceae	I	AH	-	+	+
11	0.73	0.021	<i>Lolium</i> sp.	Poaceae	I	H	-	-	-
10	0.75	0.020	Shiny Grass	Poaceae	N.A.	H	-	-	-
10	0.50	0.013	<i>Sonchus</i> sp.	Asteraceae	I	H	-	-	-
8	4.19	0.087	<i>Brassica nigra</i>	Brassicaceae	I	AH	-	+	-
7	2.57	0.047	<i>Atriplex</i> sp.	Chenopodiaceae	N.A.	S (?)	-	-	-
6	0.50	0.008	<i>Cressa truxillensis</i>	Convolvulaceae	N	PH	+	+	+
5	0.50	0.007	<i>Malva parviflora</i>	Malvaceae	I	AH	-	+	+
4	4.75	0.050	<i>Carthamus tinctorius</i>	Asteraceae	I	AH	-	-	-
4	1.13	0.012	Unknown Narrow Leaved	N.A.	N.A.	N.A.	-	-	-
4	2.38	0.025	Unknown Shiny Leaf	N.A.	N.A.	N.A.	-	-	-
2	1.75	0.009	Annual <i>Atriplex</i>	Chenopodiaceae	N.A.	S (?)	-	-	-
2	1.75	0.009	Unknown toothed leaf.	N.A.	N.A.	N.A.	-	-	-
2	0.50	0.003	Unknown w/ red cotyledons	N.A.	N.A.	N.A.	-	-	-
2	0.50	0.003	Unknown with Fleshy Leaf	N.A.	N.A.	N.A.	-	-	-
1	3.00	0.008	<i>Digitaria</i> sp.	Poaceae	I	H	-	-	-
1	0.50	0.001	<i>Hemizonia pungens</i>	Asteraceae	N	AH	+	+	+
1	15.00	0.039	<i>Hordeum</i> sp.	Poaceae	N.A.	H	-	-	-
1	0.50	0.001	<i>Monolepis nuttalliana</i>	Chenopodiaceae	N	AH	-	+	-
1	0.50	0.001	<i>Senecio vulgaris</i>	Asteraceae	N.A.	AH	-	-	-
1	0.50	0.001	Unknown Grass	Poaceae	N.A.	H	-	-	-
1	0.50	0.001	Unknown Hairy Leaved	N.A.	N.A.	N.A.	-	-	-
1	0.50	0.001	Unknown Hairy Ovate Leaved	N.A.	N.A.	N.A.	-	-	-
1	0.50	0.001	Unknown Lanceolate	N.A.	N.A.	N.A.	-	-	-

Land Retirement Demonstration Program: Year 3

Freq. ¹	Cover ²	Site cover ³	Species/morpho-species	Family	Origin ⁴	Life history ⁵	A ⁶	B ⁷	C ⁸
Leaved									
1	0.50	0.001	Unknown Mustard	Brassicaceae	N.A.	H	-	-	-
1	0.50	0.001	Unknown species	N.A.	N.A.	N.A.	-	-	-
-	-	-	<i>Acrotilon repens</i>	Asteraceae	I	PH	-	+	-
-	-	-	<i>Allenrolfea occidentalis</i>	Chenopodiaceae	N	S	+	-	-
-	-	-	<i>Distichlis spicata</i>	Poaceae	N	PH	+	+	+
-	-	-	<i>Helianthus annuus</i>	Asteraceae	N	AH	+	+	-
-	-	-	<i>Heliotropium curassavicum</i>	Boraginaceae	N	PH	+	+	-
-	-	-	<i>Isocoma acradenia</i>	Asteraceae	N	S	+	+	-
-	-	-	<i>Malvella leprosa</i>	Malvaceae	N	PH	-	+	-
-	-	-	<i>Medicago sativa</i>	Fabaceae	I	PH	-	+	-
-	-	-	<i>Rumex crispus</i>	Polygonaceae	I	PH	-	+	+
-	-	-	<i>Salsola tragus</i>	Chenopodiaceae	I	AH	+	+	-
-	-	-	<i>Scirpus acutus</i>	Cyperaceae	N	PH	-	-	+
-	-	-	<i>Sesuvium verrucosum</i>	Aizoaceae	N	PH	+	+	+
-	-	-	<i>Tamarix parviflora</i>	Tamaricaceae	I	T or S	+	-	-
<p>1. Frequency: the number of quadrats in which the taxon was noted. Species with no values listed were those encountered during the pre-project Inventory (2000) that were not observed in sampling quadrats during the baseline survey (2001).</p> <p>2. Estimated mean percent cover of the taxon calculated from only those quadrats in which the species was noted. Percent cover values were estimated from midpoints of the cover class (e.g., a species with an estimated cover of 5-25% was evaluated as having a cover of 15%).</p> <p>3. Estimated site-wide mean percent cover calculated from the summed cover data divided by the total number (384) of quadrats.</p> <p>4. Key to Origins: B, Barley; I, Introduced; N, Native; N.A., Not Known.</p> <p>5. Key to Life History: ,H, Herb; AH, Annual Herb; PH, Perennial Herb; APH, Annual or Perennial Herb; S, Shrub; T, Tree; N.A., Not Known.</p> <p>6. Species encountered in Area A during the pre-project Inventory (see Figure 19).</p> <p>7. Species encountered in Area B during the pre-project Inventory (see Figure 19).</p> <p>8. Species encountered in Area C during the pre-project Inventory (see Figure 19).</p>									

B. Rank-abundance Graphs Generated from Vegetation Sampling on the Tranquillity Habitat Restoration Study Plots, 1999-2001

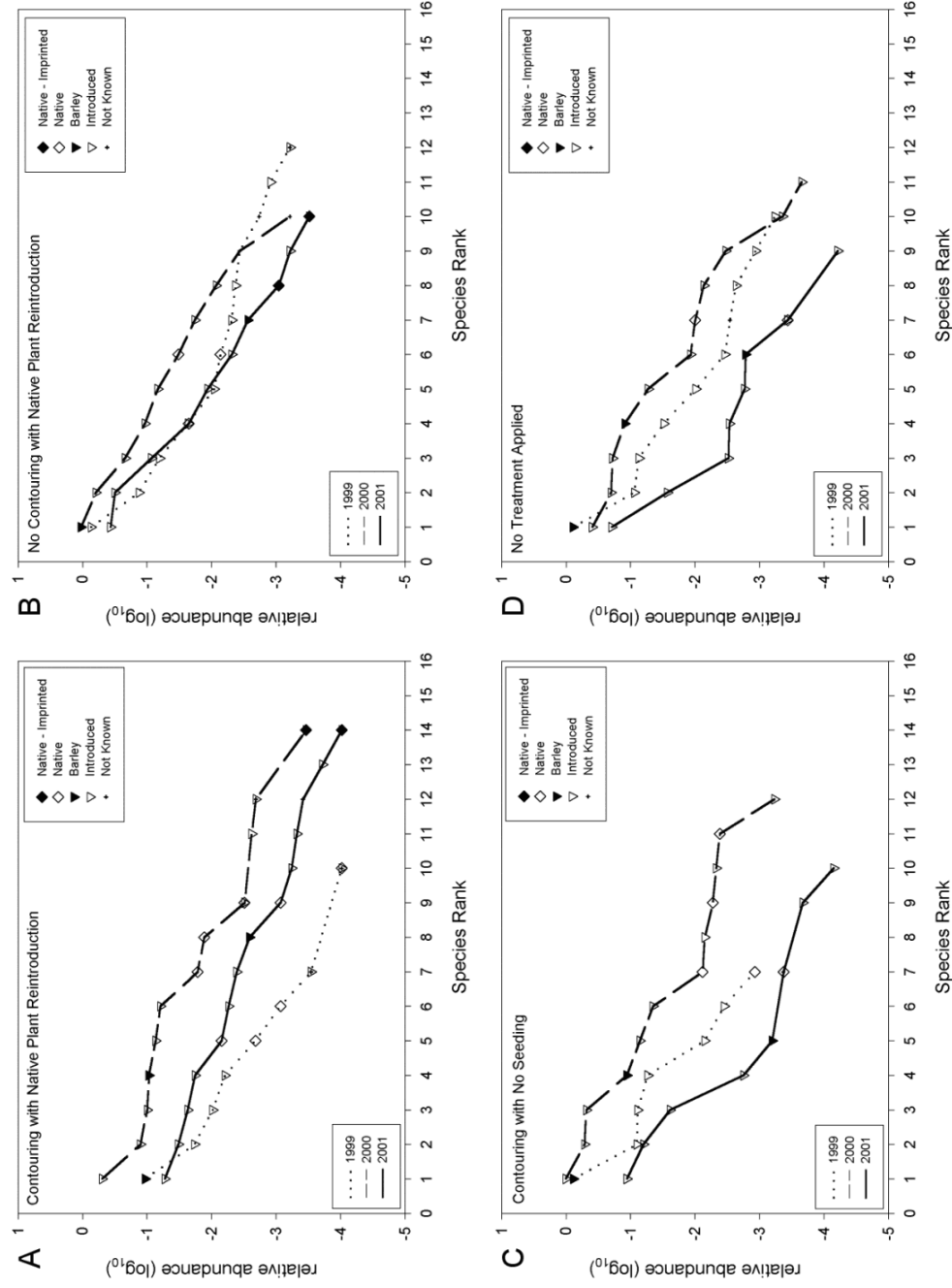


Figure B1. Rank-abundance curves for the Block 1 study plots, Tranquillity HRS.

Land Retirement Demonstration Program: Year 3

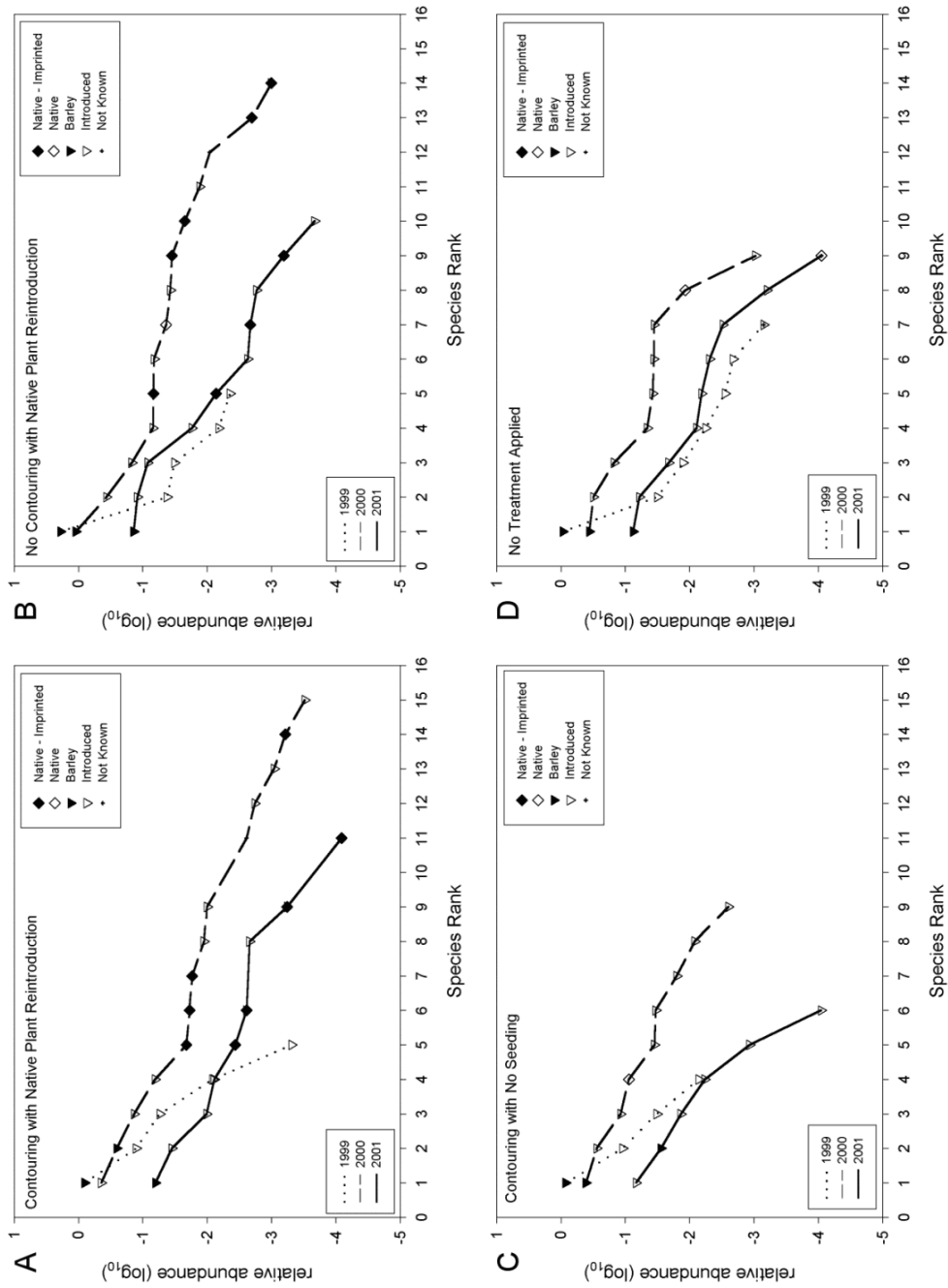


Figure B2. Rank-abundance curves for the Block 2 study plots, Tranquillity HRS.

Land Retirement Demonstration Program: Year 3

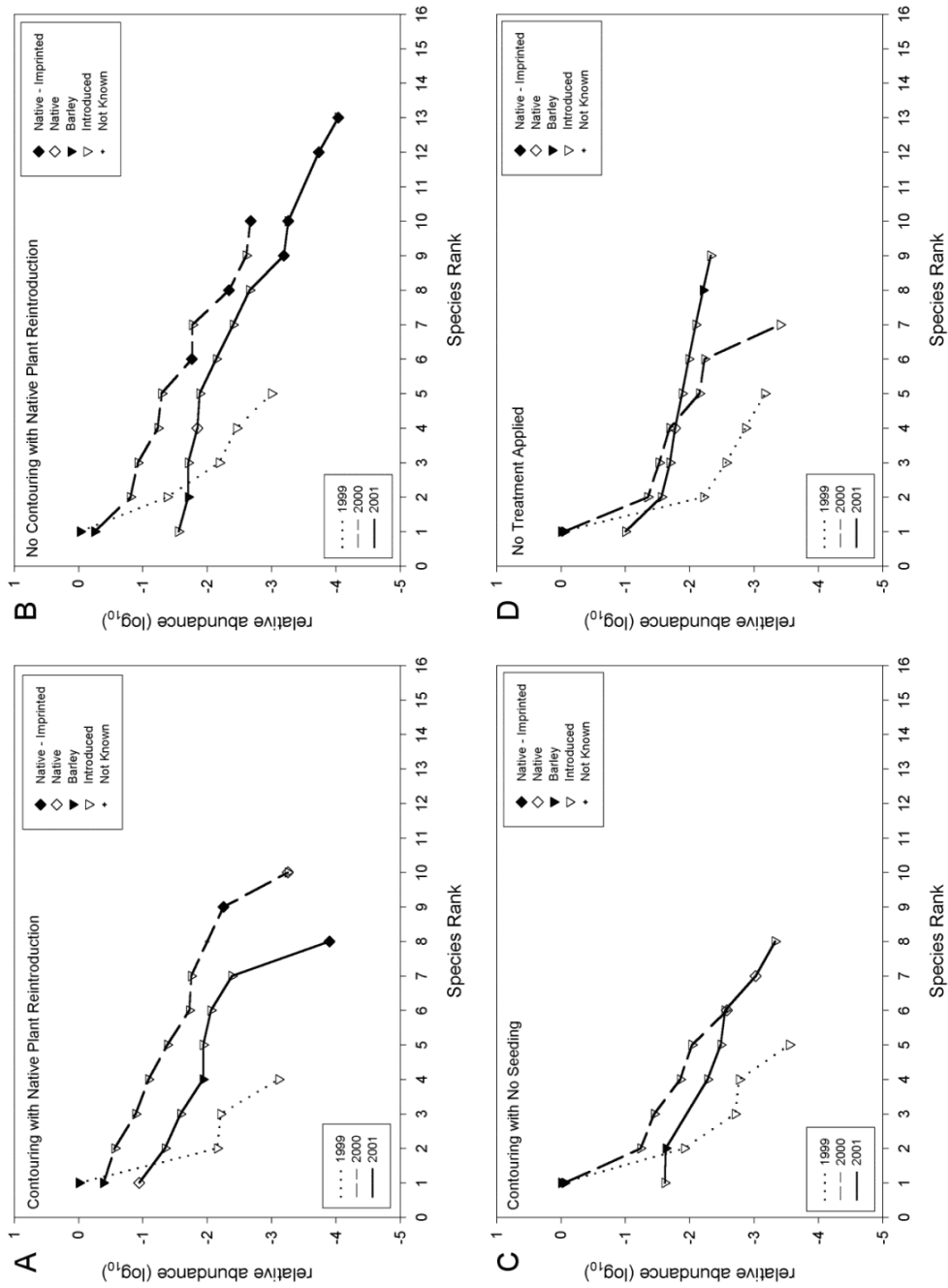


Figure B3. Rank-abundance curves for the Block 3 study plots, Tranquillity HRS.

Land Retirement Demonstration Program: Year 3

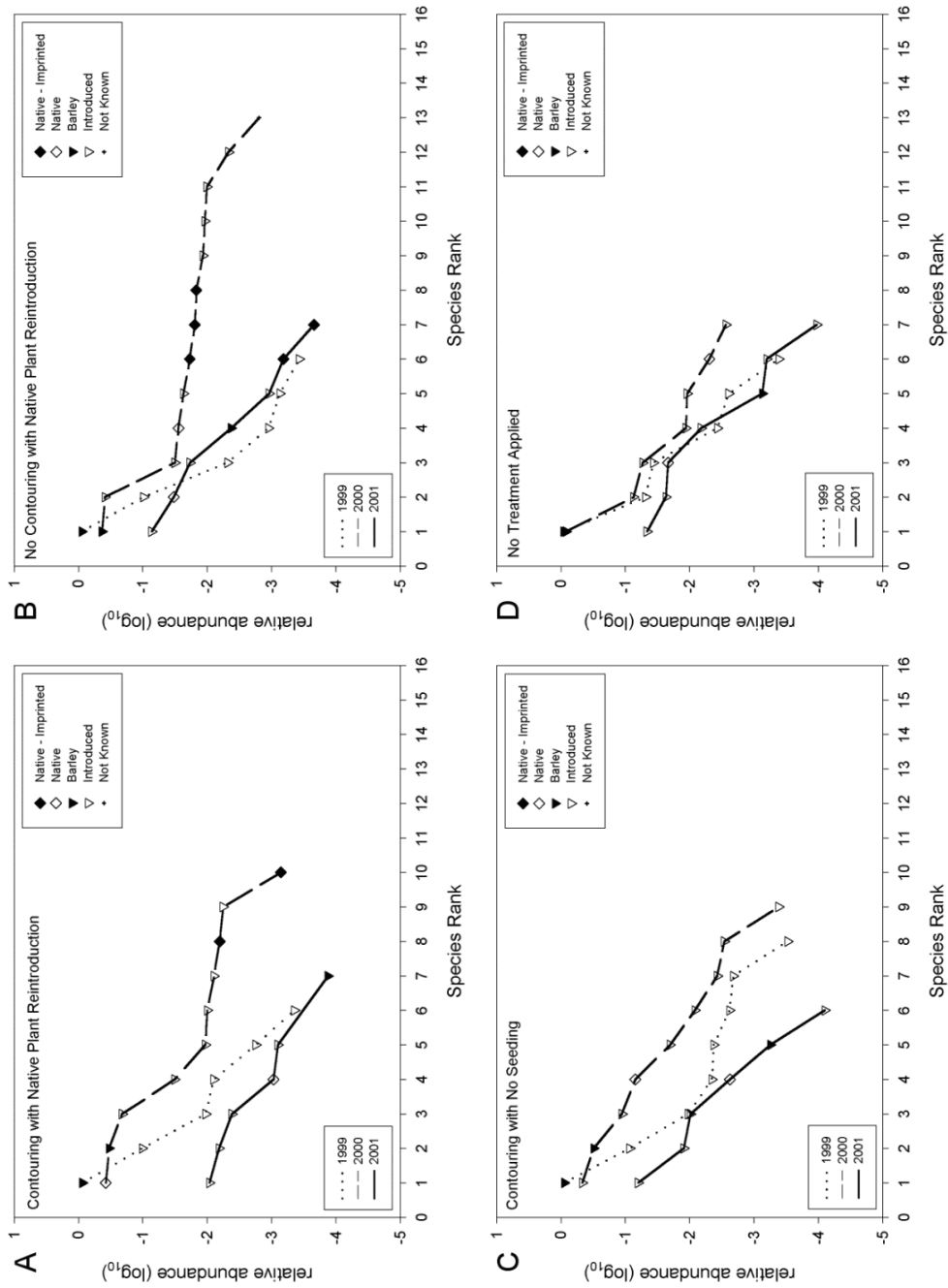


Figure B4. Rank-abundance curves for the Block 4 study plots, Tranquillity HRS.

Land Retirement Demonstration Program: Year 3

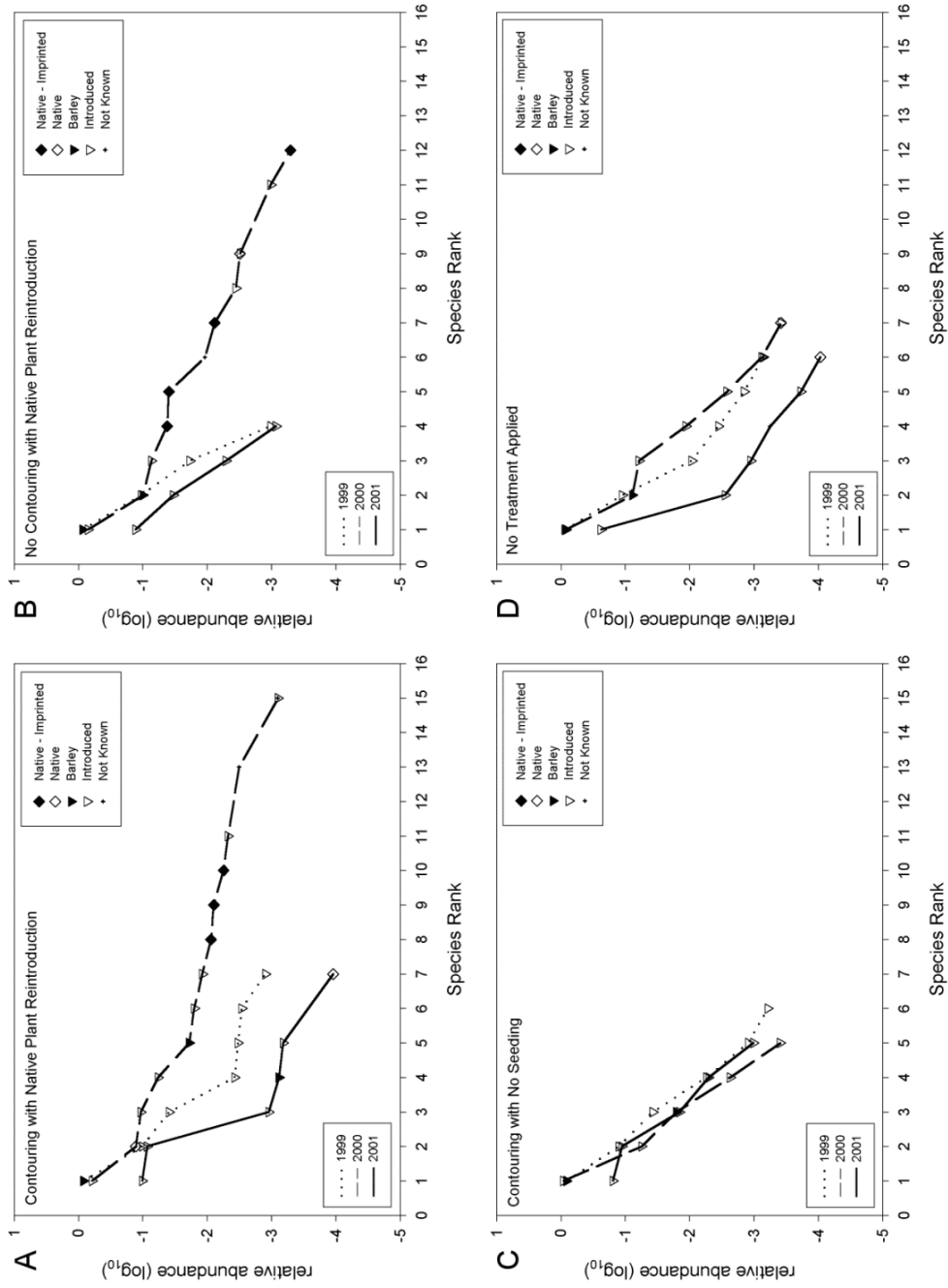


Figure B5. Rank-abundance curves for the Block 5 study plots, Tranquillity HRS.

C. Avian Species Observed on the Tranquillity Habitat Restoration Study Plots, 1999-2001

Table C1. Avian species observed on the Tranquillity HRS plots, 1999-2001.

Avian code	Common name ¹	Scientific name	Status ²	1999	2000	2001
AMCR	American Crow	<i>Corvus brachyrhynchos</i>		+	+	+
AMKE	American Kestrel*	<i>Falco sparverius</i>		+	+	+
AMPI	American Pipit**	<i>Anthus rubescens</i>		+	-	+
BAOW	Barn Owl*	<i>Tyto alba</i>		-	+	+
BARS	Barn Swallow	<i>Hirundo rustica</i>		+	+	+
BHCO	Brown-headed Cowbird*	<i>Molothrus ater</i>		-	-	+
BNST	Black-necked Stilt	<i>Himantopus mexicanus</i>		+	-	-
BRBL	Brewer's Blackbird*	<i>Euphagus cyanocephalus</i>		+	+	+
BUOW	Burrowing Owl**	<i>Athene cunicularia</i>	FSC/CSC	-	-	+
CLSW	Cliff Swallow	<i>Petrochelidon pyrrhonota</i>		+	+	+
CORA	Common Raven	<i>Corvus corax</i>		+	+	-
HOFI	House Finch	<i>Carpodacus mexicanus</i>		+	+	+
HOLA	Horned Lark**	<i>Eremophila alpestris</i>	CSC	+	+	+
KILL	Killdeer*	<i>Charadrius vociferus</i>		+	+	+
LASP	Lark Sparrow*	<i>Chondestes grammacus</i>		+	-	-
LBCU	Long-billed Curlew**	<i>Numenius americanus</i>	CSC	+	+	+
LOSH	Loggerhead Shrike*	<i>Lanius ludovicianus</i>	FSC/CSC	+	+	+
MALL	Mallard*	<i>Anas platyrhynchos</i>		+	+	+
MOPL	Mountain Plover**	<i>Charadrius montanus</i>	FPT/CSC	-	+	-
NOHA	Northern Harrier**	<i>Circus cyaneus</i>	CSC	+	+	+
NOMO	Northern Mockingbird	<i>Mimus polyglottos</i>		+	-	+
PRFA	Prairie Falcon*	<i>Falco mexicanus</i>	CSC	-	+	-
RNPH	Ring-necked Pheasant*	<i>Phasianus colchicus</i>		-	+	+
RTHA	Red-tailed Hawk	<i>Buteo jamaicensis</i>		-	+	-
RWBL	Red-winged Blackbird*	<i>Agelaius phoeniceus</i>		+	+	+
SAPH	Say's Phoebe*	<i>Sayornis saya</i>		-	-	+
SAVS	Savannah Sparrow**	<i>Passerculus sandwichensis</i>		+	+	+

Land Retirement Demonstration Program: Year 3

Avian code	Common name ¹	Scientific name	Status ²	1999	2000	2001
SEOW	Short-eared Owl**	<i>Asio flammeus</i>	CSC	-	+	+
SOSP	Song Sparrow	<i>Melospiza melodia</i>		-	+	+
WCSP	White-crowned Sparrow	<i>Zonotrichia leucophrys</i>		+	+	+
WEKI	Western Kingbird*	<i>Tyrannus verticalis</i>		+	+	+
WEME	Western Meadowlark**	<i>Sturnella neglecta</i>		+	+	+
WESA	Western Sandpiper	<i>Calidris mauri</i>		+	-	-
WHIM	Whimbrel	<i>Numenius phaeopus</i>		+	-	-
WTKI	White-tailed Kite	<i>Elanus leucurus</i>		+	+	+
YHBL	Yellow-headed Blackbird	<i>Xanthocephalus xanthocephalus</i>		+	-	-
YRWA	Yellow-rumped Warbler	<i>Dendroica coronata</i>		-	-	+

1 * = Facultative grassland specialist; **, Obligate grassland specialist as in Vickery et al. 1999.

3 Key to status: FSC, Federal Special Concern species; CSC, CA Special Concern Species; FPT, Federally proposed for listing as Threatened.