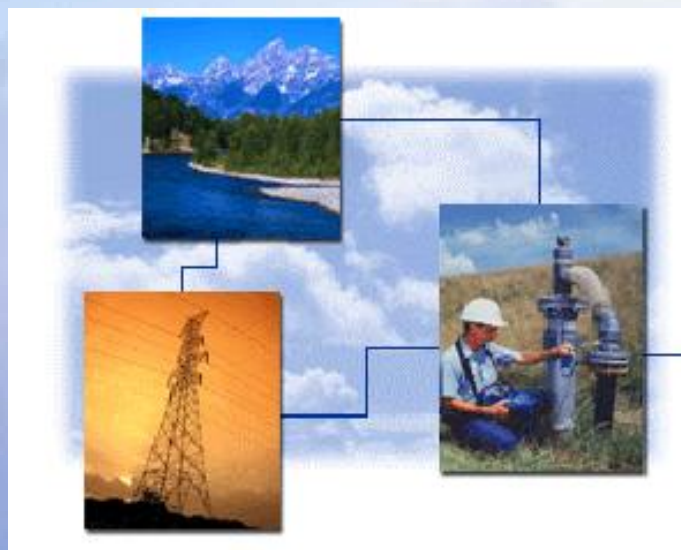




**2006
LMOP Project Expo**

ALBERT LEA LANDFILL

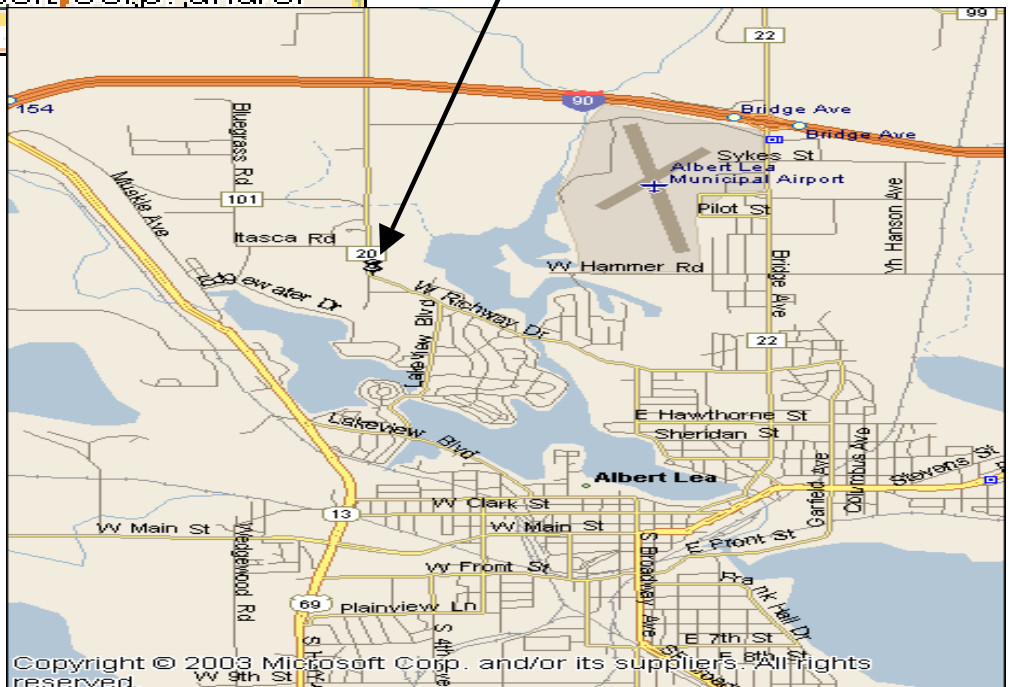
ALBERT LEA, MINNESOTA



LANDFILL LOCATION MAP



**Albert Lea
Landfill**

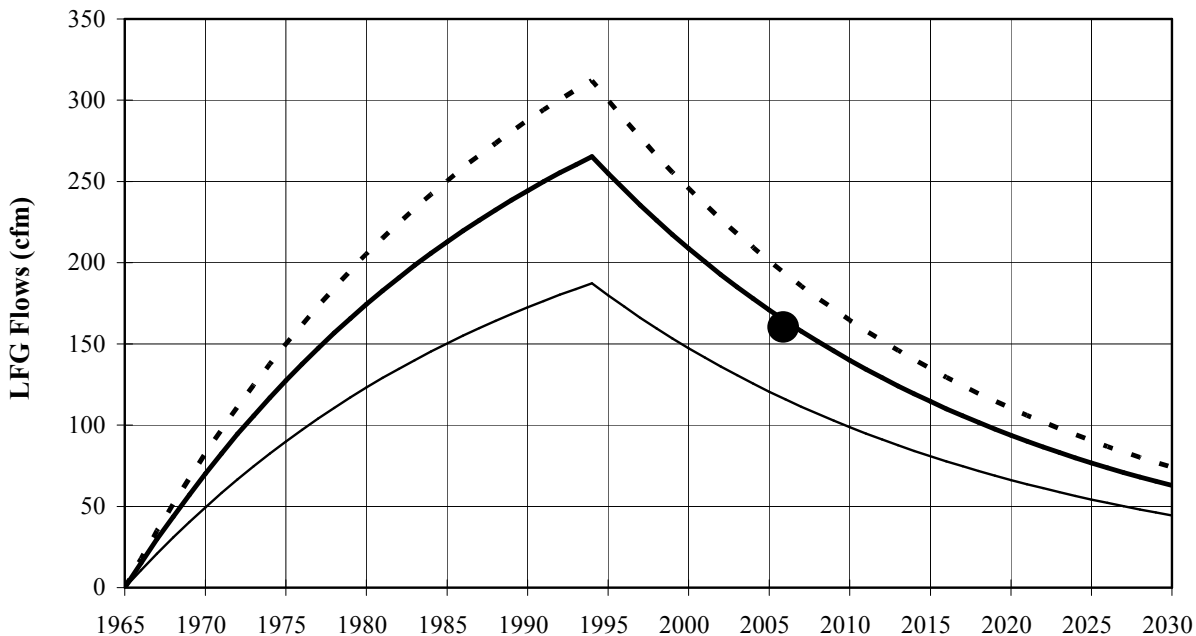




LFG GENERATION



- Owner: MPCA
- Physical Location: City of Albert Lea, MN
- Open Year: 1965
- Closure Year: 1993
- Waste in Place: 1 Million Tons
- Design Capacity: 1 Million Tons
- Annual Acceptance: n/a
- Landfill Area: 26 acres
- Wells in Place - Yes
- Flare - Yes
- LFG Flow - 200 scfm
- Methane Content - Estimated 40%
- Landgem Estimation - 150+ CFM (Peak)



LFG Generation
LFG Recovery at 85% Collection Efficiency
LFG Recovery at 60% Collection Efficiency
Actual LFG Recovery in July 2005



CONTACT INFORMATION



Contact:	Martina Cameron Operational Support Division
Organization:	Minnesota Pollution Control Agency
Address:	520 Lafayette Road Saint Paul, Minnesota 55155
Phone:	651.296.7755
E-mail:	<u>martina.cameron@pca.state.mn.us</u>

RFP has been issued. Proposals are due January 31, 2006.