

# UFAD – The Good The Bad and the Ugly

## CASE STUDY

### BOSTON COLLEGE ADMINISTRATION BUILDING

WAGDY ANIS AIA, PRINCIPAL,  
Director of Technical Resources

SHEPLEY BULFINCH RICHARDSON AND ABBOTT  
ARCHITECTS

BOSTON, MA

**TRINITY CHURCH  
BOSTON, MA**





# BRONSON METHODIST HOSPITAL KALAMAZOO, MICHIGAN



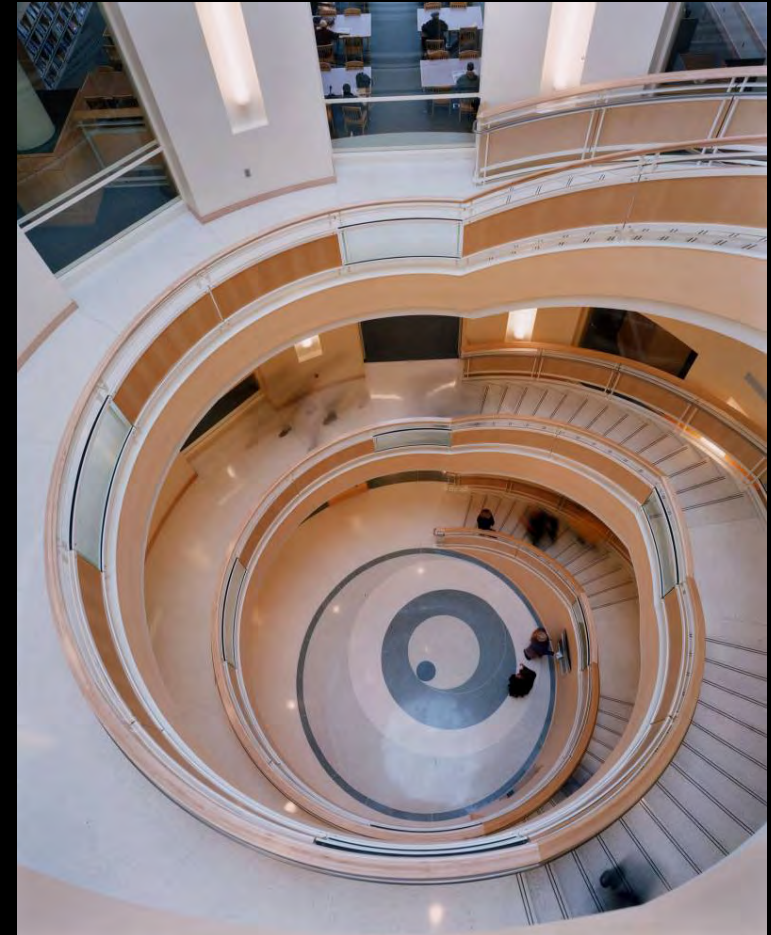


# AGNES SCOTT COLLEGE SCIENCE CENTER – ATLANTA, GEORGIA





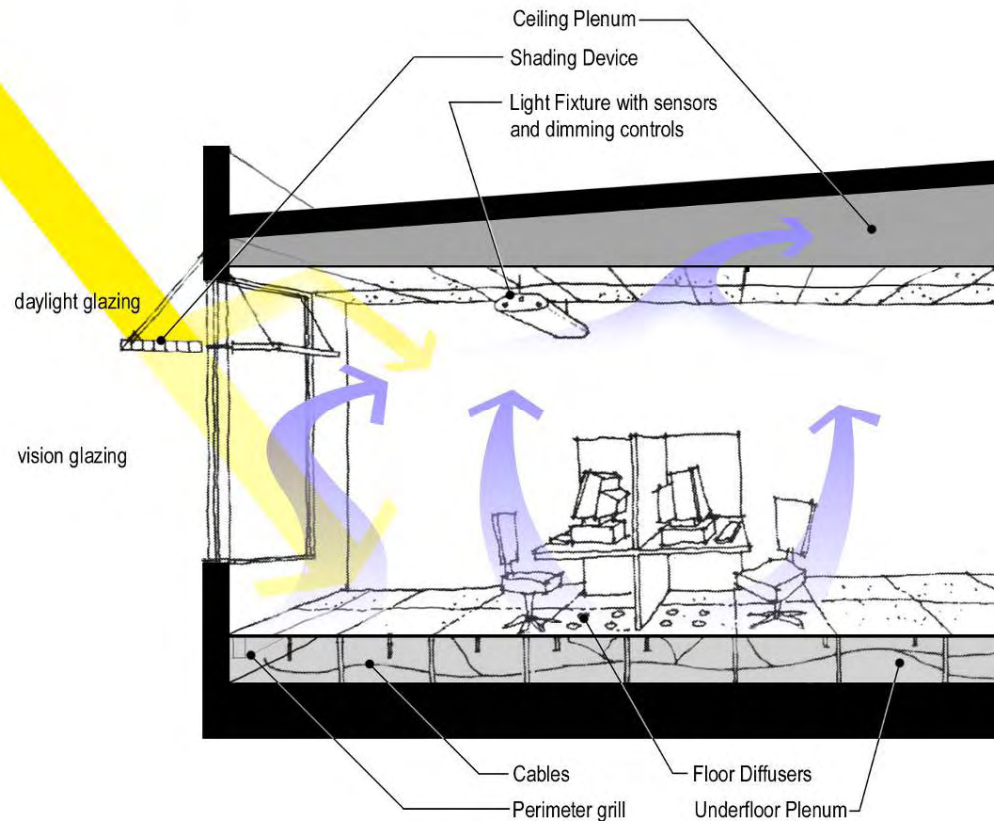
# EUGENE PUBLIC LIBRARY EUGENE, OREGON



**WARREN B. RUDMAN US COURTHOUSE,  
CONCORD, NH**



# EQ 2 – Increase Ventilation Effectiveness - EQ 6.1 and 6.2 Controllability of Systems

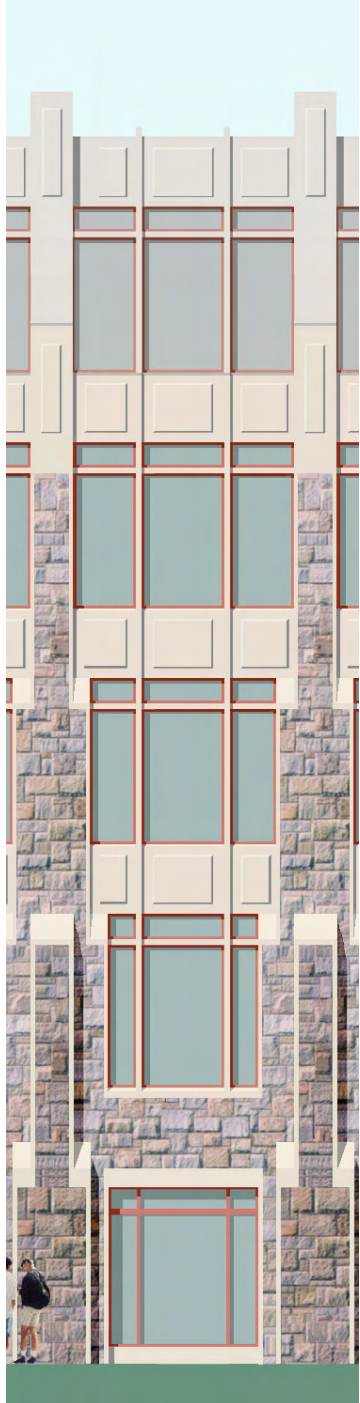






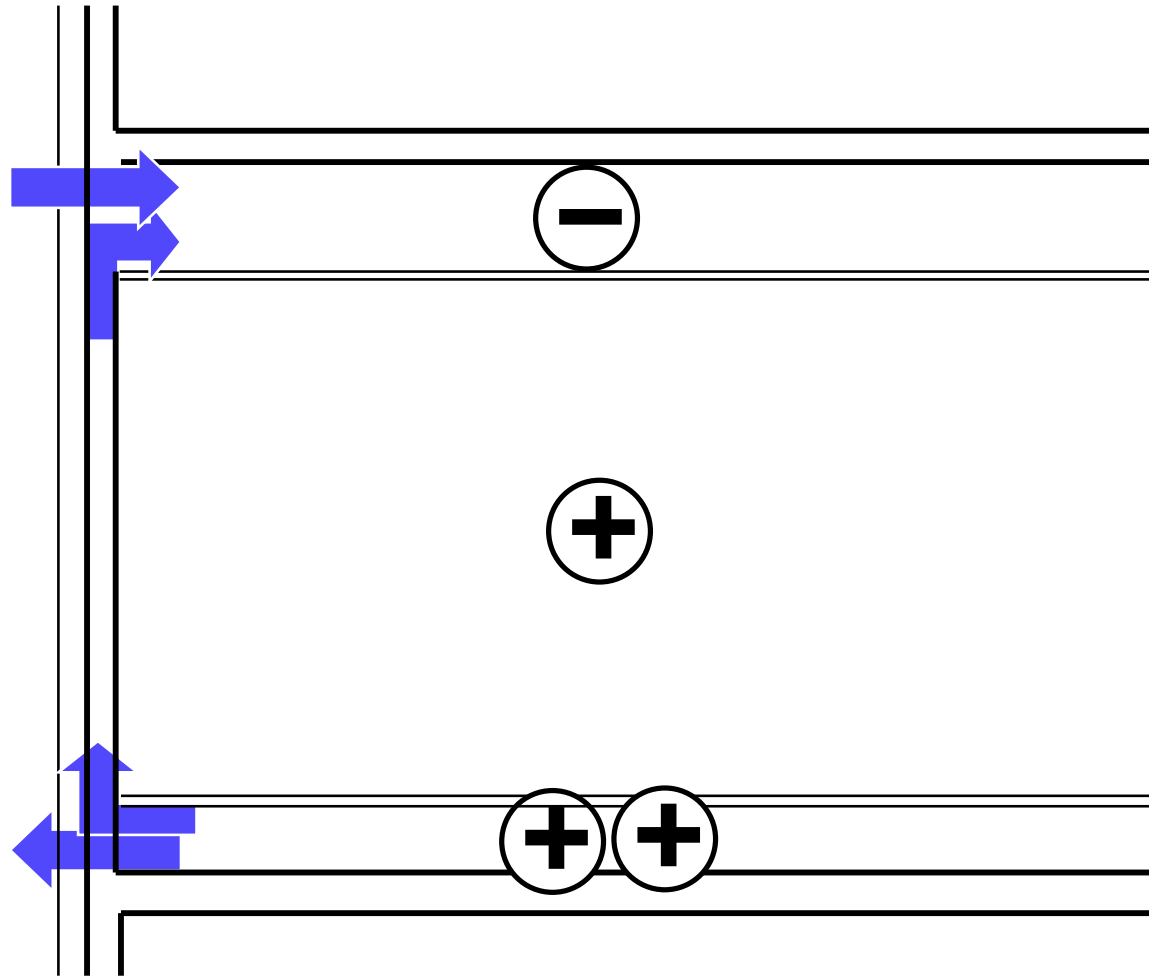




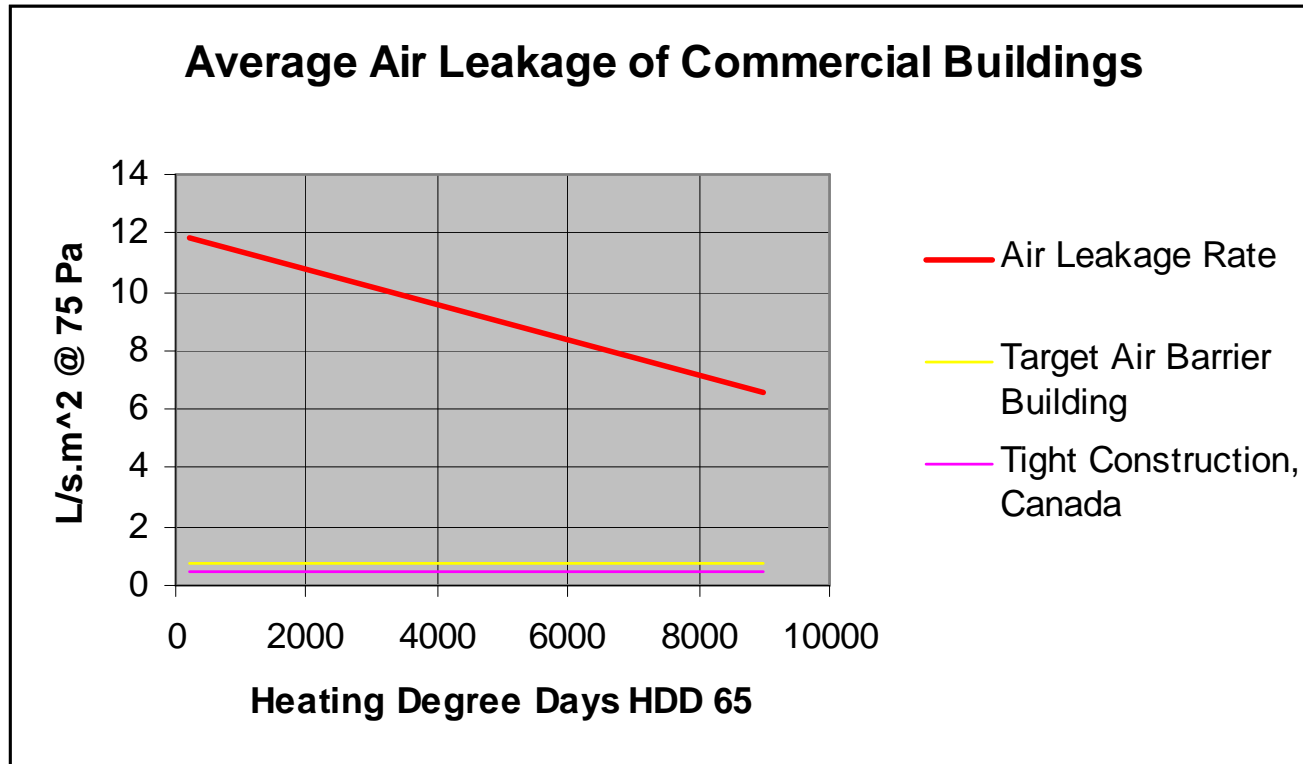




# Are you trying to inflate a balloon with holes?



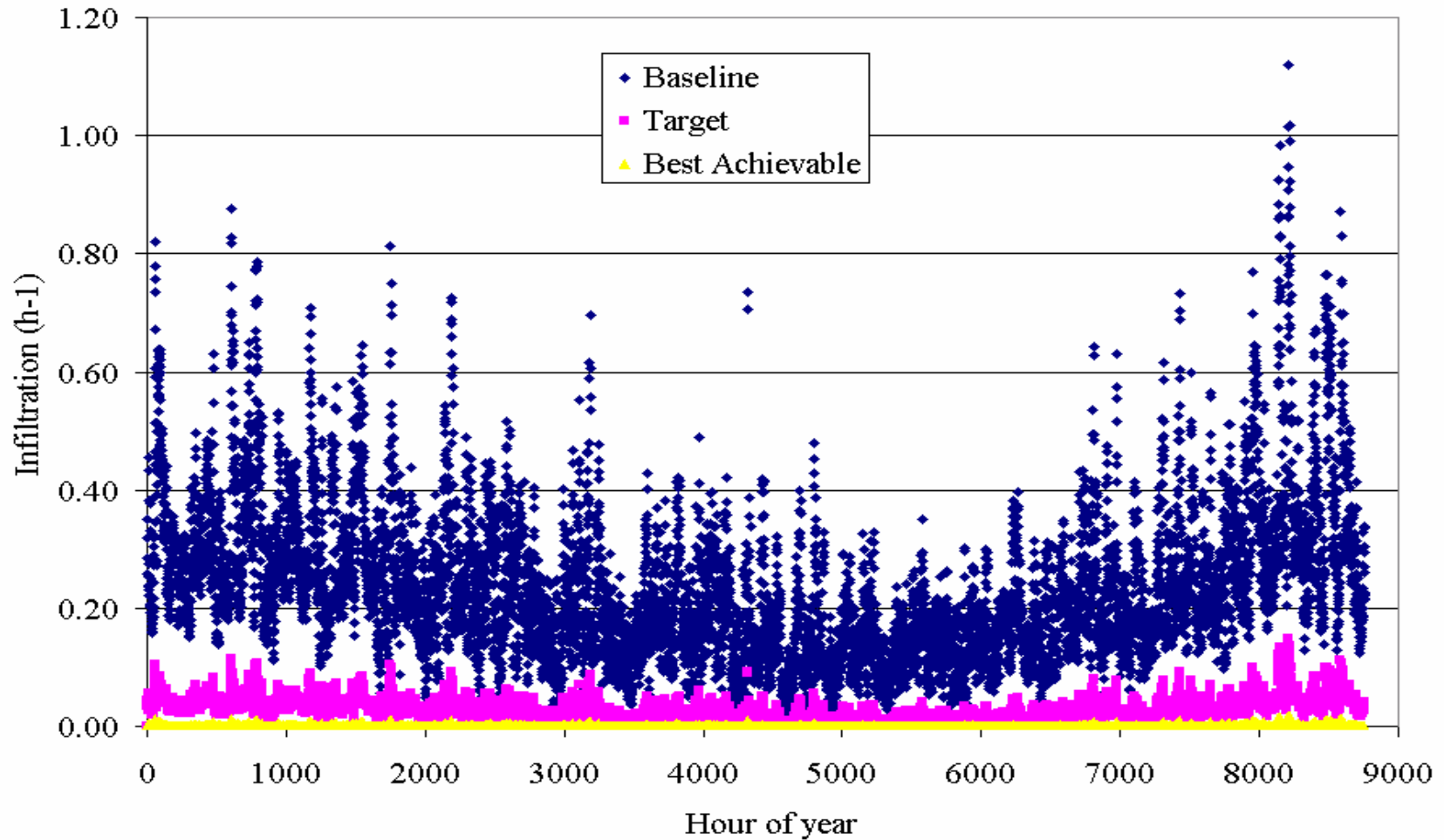
# INFILTRATION RATES



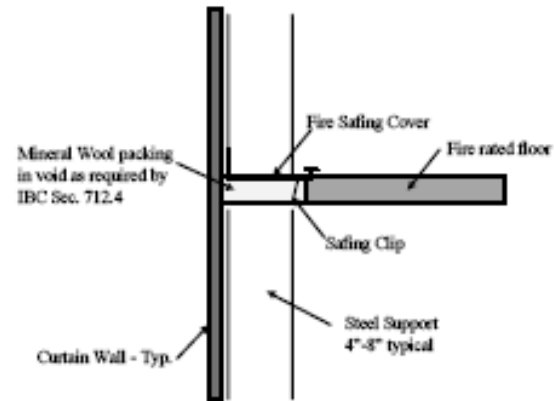


# Hourly Infiltration - St. Louis

## NISTIR 7238



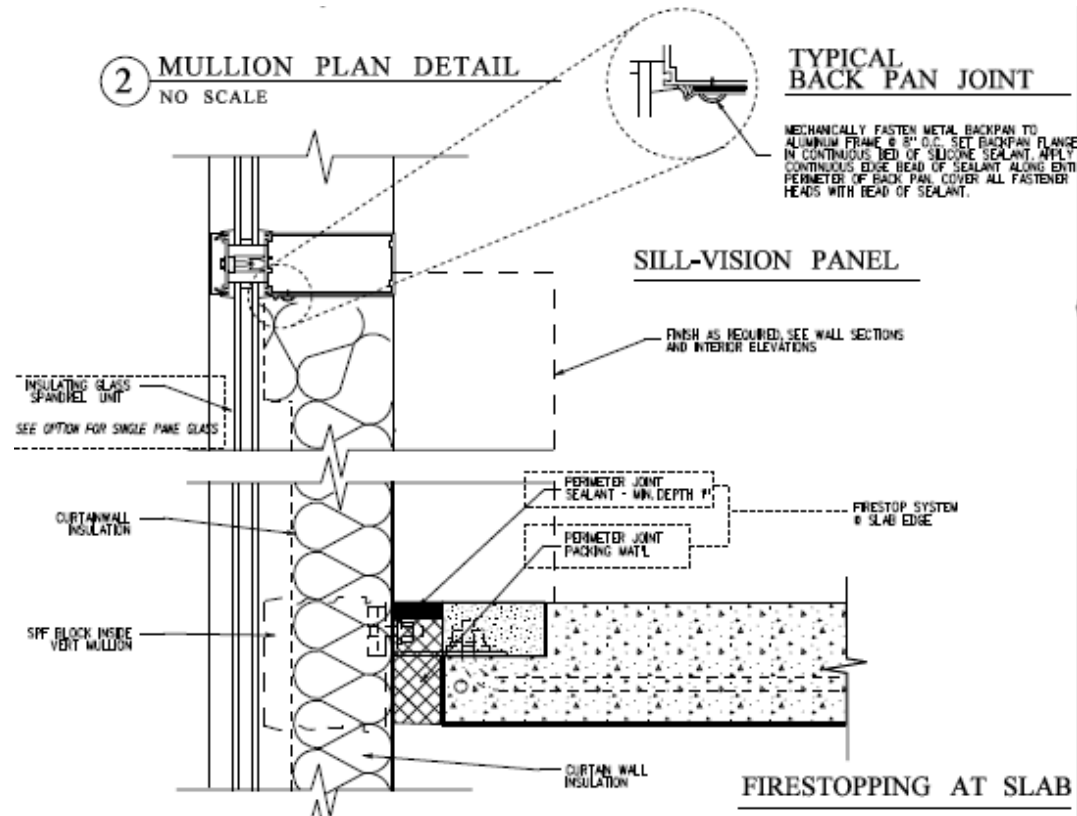
# Curtain Wall Firestopping



**Fig.2 Exterior Curtain Wall/Floor Intersection with no interior wall**



# Curtain Wall Backpan and Firestopping



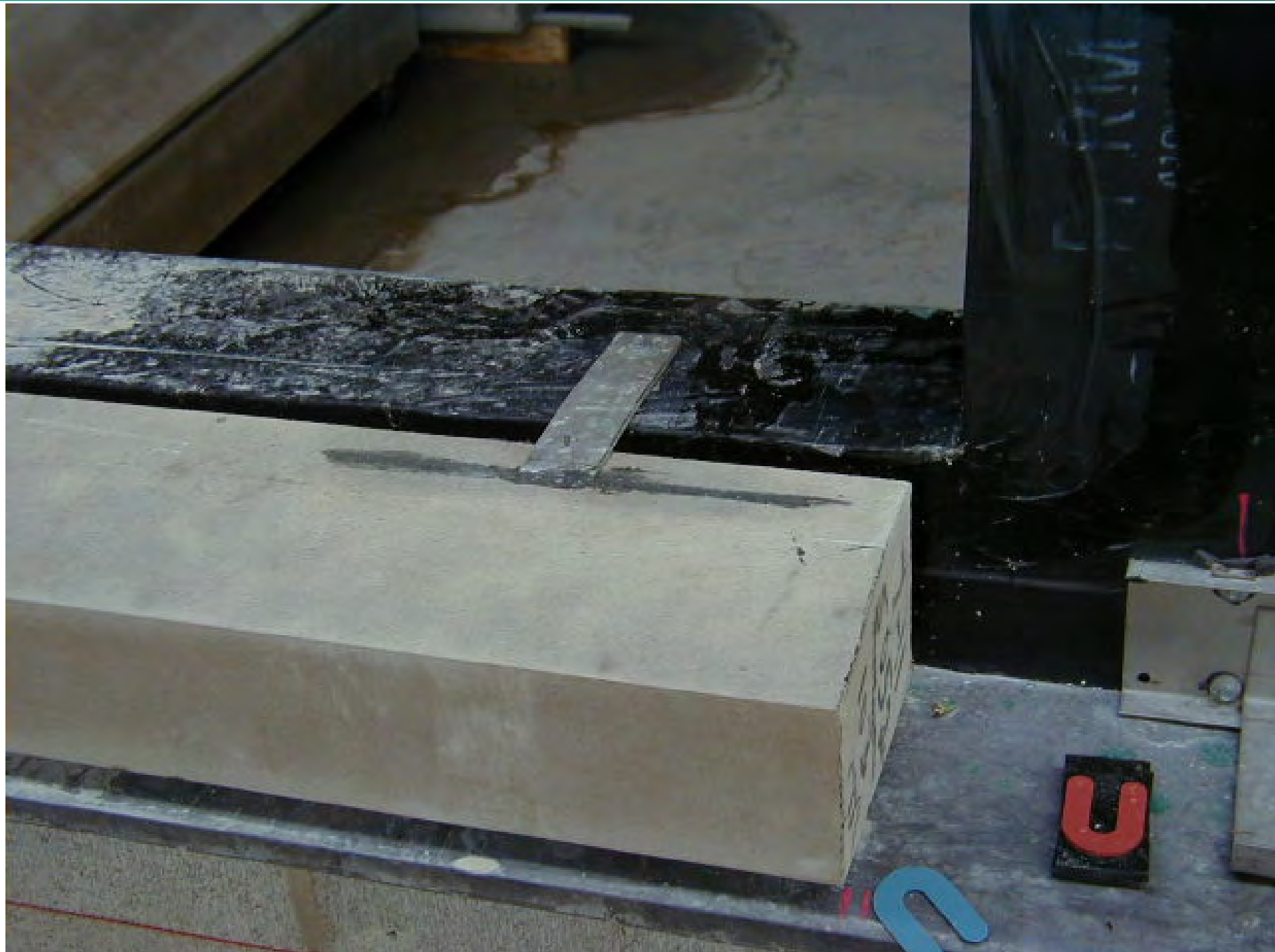






















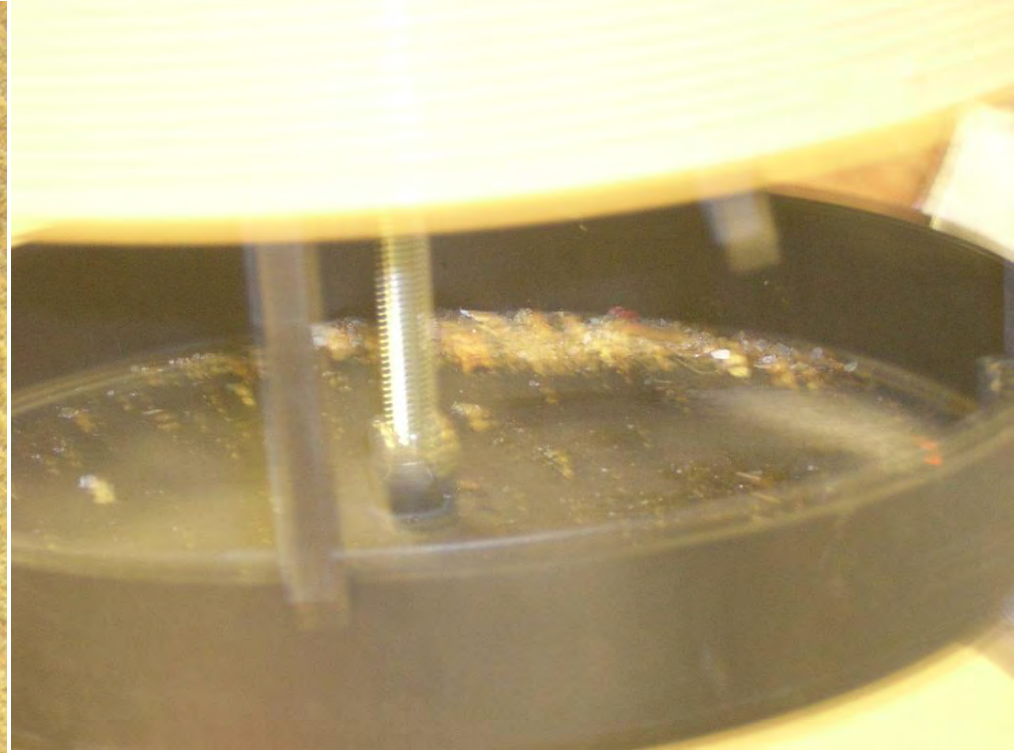


Corporate Express  
Copy Paper  
92 20 5000











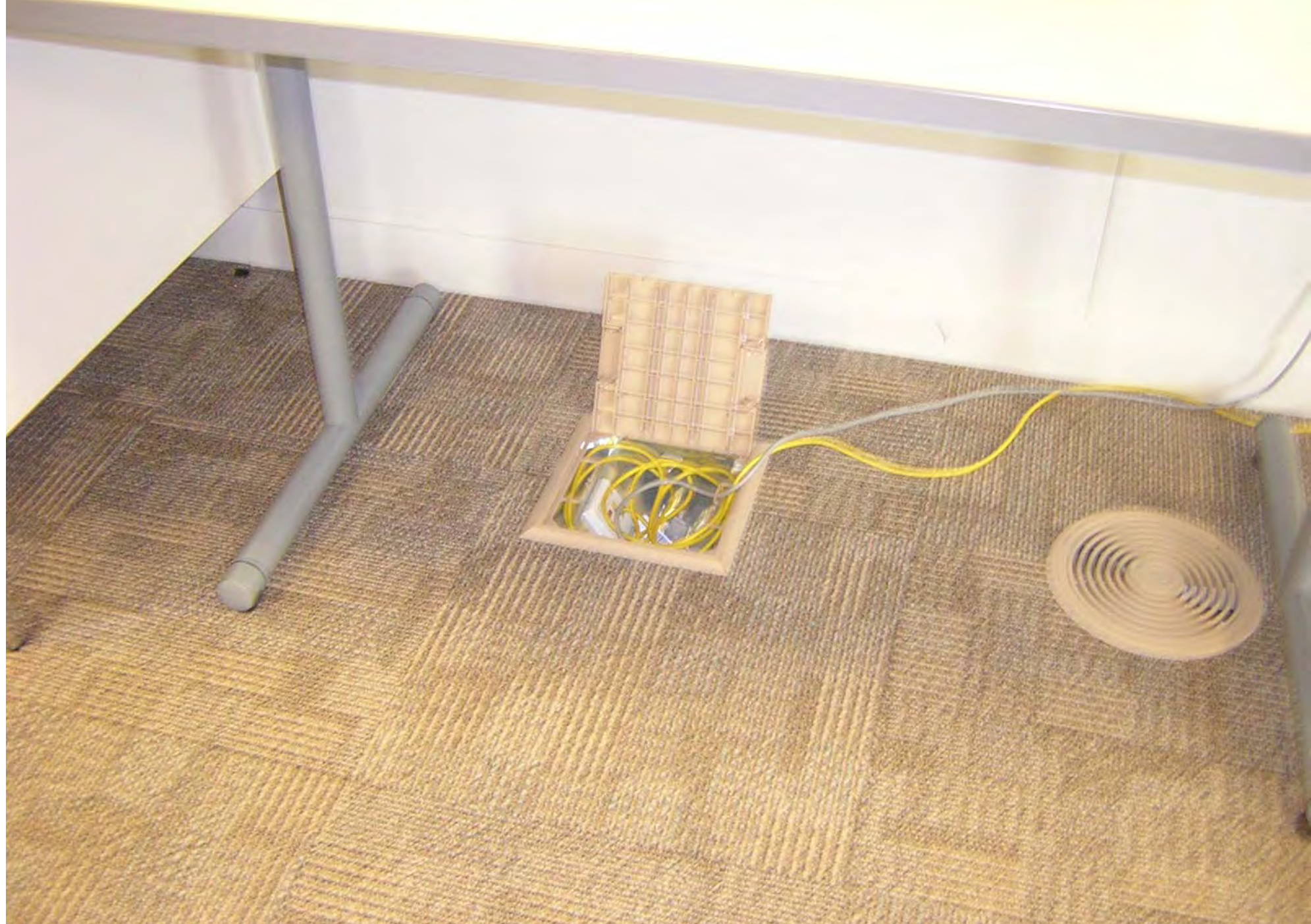














# Conclusions

- ◆ **Compartmentalize UFAD zones in accordance with fan service zone**
- ◆ **Fans with VSD's and pressure sensors**
- ◆ **Catastrophic water leak: structural collapse: Indirect drains with solenoid valves activated by water/sensors/alarms.**
- ◆ **Insulation of slabs on grade and other slabs**
- ◆ **Seal conduits esp. to thermostat**
- ◆ **No MC Cable**
- ◆ **Filters on fan boxes need access**

# Conclusions

- ◆ NIBS – GSA Standard for UFAD systems.
- ◆ Pressure test plenums. Leakage 12% max. achievable.
- ◆ Educate building users. Users' manual?
- ◆ Coordinate outlet locations w/ workstations.
- ◆ Provide longer “whips” on outlets
- ◆ Building uses “less energy than budgeted”
- ◆ Fewer occupant complaint building

# Conclusions

- ◆ NIBS – GSA Standard for UFAD systems.
- ◆ Pressure test plenums. Leakage 12% max. achievable.
- ◆ Educate building users. Users' manual?
- ◆ Coordinate outlet locations w/ workstations.
- ◆ Provide longer “whips” on outlets
- ◆ Building uses “less energy than anticipated”
- ◆ Fewer occupant complaint building