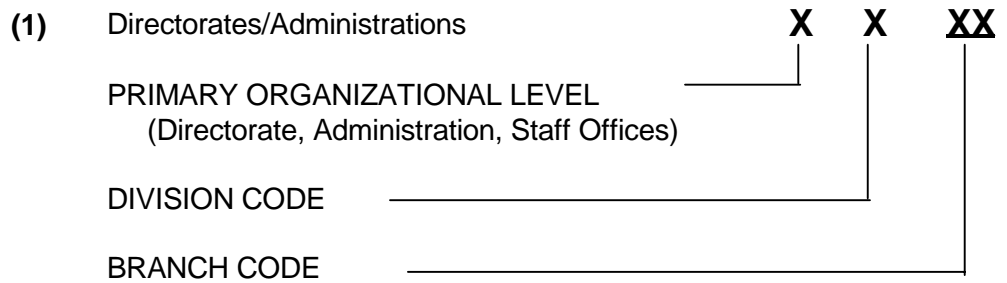


Chapter 5

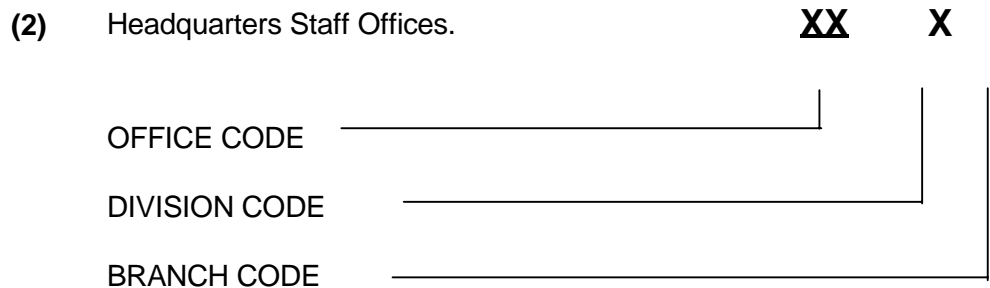
Organization Codes

5-1. Introduction. The organizational coding structure for CY as shown in the diagram below is used to provide basic accounting information applicable to each organizational element within FEMA. For Headquarters Directorates and Administrations, the first digit indicates the primary organizational funding level (e.g., Mitigation Directorate); the next digit indicates the immediate office of the Associate Director/Administrator or a Division; and the remaining digits indicate the branch within each division. For Staff Offices and the Office of the Inspector General, the first two digits indicate the office, the third digit represents the division within the office or the immediate office of the Office Director, and the last digit denotes the branch within the division.

a. Headquarters Organization Codes.

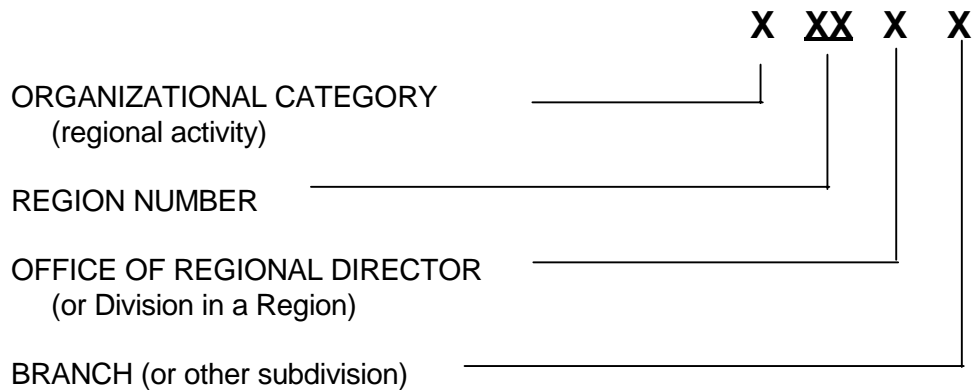


X



b. Regional Organization Codes.

The organizational code for FEMA regions is defined as follows: The first digit indicates organizational category (i.e., regional), the second and third digits indicate region (i.e., 01 for region 1, 10 for region 10), and the fourth digit indicates the Office of the Regional Director or the division under each region. A fifth digit may be used to denote the branch or other subdivision (e.g., 90111 represents the Disaster Assistance Employee Cadre in the Office of the Regional Director in Region I).



c. Special Administrative Codes.

Two special administrative codes are used to set aside funds that are not available for organizations to spend even though the PROGRAM CODE is among those normally used by the organization. These codes are (1) **1001**, which is used for funds set-aside to meet obligations resulting from prior year requirements that cannot be met with prior year funds (M-account) and (2) **1002**, which denotes funds set-aside for postage.

5-2. List of Organization Codes. The organization codes on pages 5-2 through 5-12 represent the highlighted, underlined digits in the following example:

CY - 09 - 1000 - 1040 - 2610 - D

| | <u>Organization Code</u> |
|--|--------------------------|
| <u>Office of the Director</u> | 01000 |
| <u>Office of National Security Coordinator</u> | 03000 |
| <u>Office of General Counsel</u> | 05000 |
| Office of the General Counsel | 05100 |

| | |
|--|---------------------|
| General Law Division | 05200 |
| Litigation Division | 05300 |
| | Organization |
| Code | |
| Program Law Division | 05400 |
| Office of Congressional and Legislative Affairs | 06000 |
| Office of Public Affairs | 07000 |
| Office of the Director | 07100 |
| Office of Human Resources Management | 08000 |
| Office of the Director | 08100 |
| Headquarters Personnel Operations Division | 08200 |
| Field Personnel Operations Division | 08300 |
| Employee and Labor Relations Division | 08400 |
| Disaster Personnel Operations Division | 08600 |
| Office of Equal Rights | 09000 |
| Office of Financial Management | 10000 |
| Chief Financial Officer | 10100 |
| CFO's Field Support Team | 10110 |
| Financial Planning and Analysis Division | 10200 |
| Financial Systems Division | 10300 |
| Systems Operations Branch | 10310 |
| Systems Administration Branch | 10330 |
| Accounting Services Division | 10400 |
| Disbursements and Receivables Branch | 10410 |
| Reporting and Analysis Branch | 10420 |
| Financial Policy Division | 10500 |
| Policy and Standards Branch | 10510 |
| Disaster Finance Division | 10800 |
| Disaster Operations Branch | 10810 |
| Disaster Reports and Analysis Branch | 10820 |
| Grants and Acquisition Support Division | 10600 |
| Flood, Fire, and Mitigation Division | 10700 |
| Operations, Recovery, and Preparedness Division | 10900 |
| Office of Policy and Regional Operations | 11000 |

| | |
|--|----------------------------|
| <u>Office of Inspector General</u> | 12000 |
| Office of the Inspector General..... | 12100 |
| | <u>Organization</u> |
| <u>Code</u> | |
| Audits Division | 12200 |
| Financial Management Branch | 12210 |
| Program Operations Branch..... | 12220 |
| Eastern District Audit Office..... | 12230 |
| Western District Audit Office..... | 12240 |
| Inspections Division | 12300 |
| Investigations Division | 12400 |
| Atlanta Investigations Branch | 12410 |
| Western District Investigations Branch..... | 12420 |
| Management Services Division..... | 12500 |
| <u>Office of Intergovernmental Affairs</u> | 13000 |
| <u>Office of Cerro Grande Fire Claims</u> | 14000 |
| <u>Mitigation Directorate</u> | 20000 |
| Office of the Associate Director | 21000 |
| Support Services Liaison Staff..... | 21100 |
| Project Impact Staff | 21200 |
| Technical Services Division | 22000 |
| Mapping Support Branch | 22100 |
| Hazards Study Branch..... | 22200 |
| Policy, Assessment and Outreach Division | 23000 |
| Outreach Branch..... | 23100 |
| Assessment Branch..... | 23200 |
| Policy Branch..... | 23300 |
| Program Support Division..... | 24000 |
| Program Delivery Branch..... | 24100 |
| Program Planning Branch..... | 24200 |
| National Earthquake Program Office..... | 25000 |
| National Dam Safety Program Office..... | 26000 |
| <u>Preparedness, Training and Exercises Directorate</u> | 30000 |
| Office of the Associate Director | 31000 |

| | |
|---------------------------------|-------|
| International Affairs Unit..... | 31300 |
| Customer Service Unit..... | 31400 |
| Support Services Unit..... | 31500 |

Organization

Code

| | |
|--|-------|
| Training Division | 34000 |
| Response and Recovery Branch | 34200 |
| Mitigation Branch | 34300 |
| Preparedness Branch | 34400 |
| Support Systems Branch | 34500 |
| Conference and Training Branch..... | 34700 |
| Employee Development Branch | 34800 |
| Mount Weather Management Division..... | 36000 |
| Site Support Services Branch..... | 36100 |
| Facilities Management Branch..... | 36600 |
| Engineering Branch | 36700 |
| Customer Care Branch..... | 36800 |
| Partnership and Outreach Division | 37000 |
| Policy Planning Branch | 37200 |
| Outreach Branch..... | 37300 |
| Readiness Division | 38000 |
| Assessment Branch..... | 38100 |
| Program Development Branch | 38200 |
| Chemical and Radiological Preparedness Division..... | 39000 |
| Hazmat Unit..... | 39100 |
| Radiological Emergency Preparedness Branch | 39200 |
| Chemical Stockpile Emergency Preparedness Branch | 39300 |

Response and Recovery Directorate 40000

| | |
|---|-------|
| Office of the Executive Associate Director..... | 41000 |
| Northridge Recovery Office | 41300 |
| Operations and Planning Division..... | 44000 |
| Operations Center Branch | 44100 |
| Assessment and Analysis Branch..... | 44200 |
| Emergency Services Branch | 44300 |
| Planning and Coordination Branch | 44400 |
| Mobile Operations Division | 45000 |
| MERS-Maynard | 45100 |
| MERS-Thomasville | 45200 |
| MERS-Denton..... | 45300 |
| MERS-Denver..... | 45400 |
| MERS-Bothell | 45500 |

| | |
|---|-------|
| Human Services Division | 46000 |
| Program Guidance and Implementation Branch..... | 46100 |
| Housing Resources Branch | 46200 |
| National Teleregistration Center Branch..... | 46300 |

Organization

Code

| | |
|--|-------|
| National Processing Services Center (NPSC) Branch..... | 46400 |
| NPSC Branch, Hyattsville, Maryland..... | 46700 |
| NPSC Branch, Denton, Texas | 46800 |
| NPSC Branch, Mt Weather Emergency Assistance Center (MWEAC)..... | 46900 |

| | |
|--------------------------------|-------|
| Infrastructure Division | 47000 |
| Community Services Branch..... | 47100 |
| Engineering Branch | 47200 |

| | |
|---|-------|
| Readiness Coordination Division | 48000 |
| Administrative Team | 48100 |
| Correspondence Team..... | 48200 |
| Strategic Planning and Evaluation Team..... | 48300 |
| Federal Disaster Declaration Team | 48400 |

Federal Insurance Administration 50000

| | |
|-----------------------------------|-------|
| Office of the Administrator | 51000 |
|-----------------------------------|-------|

| | |
|---|-------|
| Operations Division..... | 52000 |
| Direct Program Services Branch | 52100 |
| Bureau and Information Management Branch..... | 52200 |

| | |
|---|-------|
| Financial and Administration Division | 53000 |
|---|-------|

| | |
|--|-------|
| Claims and Underwriting Division | 54000 |
| Claims Branch | 54100 |
| Underwriting Branch | 54200 |

| | |
|-------------------------|-------|
| Marketing Division..... | 55000 |
|-------------------------|-------|

US Fire Administration 60000

| | |
|-----------------------------------|-------|
| Office of the Administrator | 61000 |
| Chief Operating Officer..... | 61100 |

| | |
|---------------------------------|-------|
| National Fire Data Center | 62000 |
|---------------------------------|-------|

| | |
|----------------------------|-------|
| National Fire Academy..... | 63000 |
|----------------------------|-------|

| | |
|-----------------------------|-------|
| National Fire Programs..... | 64000 |
| Antiterrorism | 64000 |
| Response Branch | 64100 |

Mitigation Branch 64200

| <u>Code</u> | <u>Organization</u> |
|---|----------------------------|
| <u>Operations Support Directorate</u> | 70000 |
| Office of the Associate Executive Director | 71000 |
| Support Services Liaison Staff | 71100 |
| Occupational Safety and Health Office | 71200 |
| Program Services Division | 72000 |
| Operations Services Branch | 72100 |
| Records Management Branch | 72200 |
| Printing, Publications, and Graphics Branch | 72300 |
| Logistics Division | 74000 |
| Logistics Services Branch | 74100 |
| Logistics Readiness Branch | 74200 |
| Security Division | 79000 |
| Personnel and Information Security Branch | 79100 |
| Response and Facility Security Branch | 79200 |
| <u>Information Technology Services Directorate</u> | 80000 |
| Office of the Executive Associate Director | 81000 |
| Program Management Group | 81100 |
| Management Division | 82000 |
| Policy and Requirements Branch | 82100 |
| Resources Branch | 82200 |
| Configuration Management Branch | 82300 |
| Operations Division | 83000 |
| National Networks Operations Branch | 83100 |
| Headquarters Operations Branch | 83200 |
| MWEAC Operations Branch | 83300 |
| Disaster Operations and Maintenance Branch | 83400 |
| Engineering Division | 84000 |
| Development and Implementation Branch | 84100 |
| Disaster Response Branch | 84200 |
| <u>Regional Offices</u> | 90000 |
| <u>Region I</u> | 90100 |

Office of the Regional Director..... 90110
 Disaster Assistance Employee Cadre..... 90111

Mitigation Division 90120
 Hazard Identification and Risk Assessment Branch 90121
 Community Mitigation Programs Branch 90122

Organization

Code

Preparedness, Training and Exercises Division 90130
 State and Local Assistance Branch 90131
 Training, Exercises and Evaluation Branch 90132

Response and Recovery Division 90140
 Human Services Branch 90141
 Infrastructure Branch 90142

Operations and Planning Branch..... 90143

Operations Support Division 90150
 Information Systems Branch..... 90151
 Program Services Branch..... 90152

Region II..... 90200

Office of the Regional Director..... 90210
 Disaster Assistance Employee Cadre..... 90211

Mitigation Division 90220
 Hazard Identification and Risk Assessment Branch 90221
 Community Mitigation Programs Branch 90222

Preparedness, Training and Exercises Division 90230
 State and Local Assistance Branch 90231
 Training, Exercises and Evaluation Branch 90232

Response and Recovery Division 90240
 Human Services Branch 90241
 Infrastructure Branch 90242
 Operations and Planning Branch..... 90243

Operations Support Division 90250
 Information Systems Branch..... 90251
 Program Services Branch..... 90252

Caribbean Division 90260

Region III..... 90300

| | |
|--|-------|
| Office of the Regional Director..... | 90310 |
| Disaster Assistance Employee Cadre..... | 90311 |
| Mitigation Division | 90320 |
| Hazard Identification and Risk Assessment Branch | 90321 |
| Community Mitigation Programs Branch | 90322 |

Organization**Code**

| | |
|---|-------|
| Preparedness, Training and Exercises Division | 90330 |
| State and Local Assistance Branch | 90331 |
| Training, Exercises and Evaluation Branch | 90332 |
| Response and Recovery Division | 90340 |
| Human Services Branch | 90341 |
| Infrastructure Branch | 90342 |
| Operations and Planning Branch..... | 90343 |
| Recovery Programs Branch..... | 90344 |
| Response Operations Branch..... | 90345 |
| Operations Support Division | 90350 |
| Information Systems Branch..... | 90351 |
| Program Services Branch..... | 90352 |

Region IV 90400

| | |
|--|-------|
| Office of the Regional Director..... | 90410 |
| Disaster Assistance Employee Cadre..... | 90411 |
| Mitigation Division | 90420 |
| Hazard Identification and Risk Assessment Branch | 90421 |
| Community Mitigation Programs Branch | 90422 |

| | |
|---|-------|
| Preparedness, Training and Exercises Division | 90430 |
| State and Local Assistance Branch | 90431 |
| Training, Exercises and Evaluation Branch | 90432 |

| | |
|--------------------------------------|-------|
| Response and Recovery Division | 90440 |
| Human Services Branch | 90441 |
| Infrastructure Branch | 90442 |
| Operations and Planning Branch..... | 90443 |

| | |
|-----------------------------------|-------|
| Operations Support Division | 90450 |
| Information Systems Branch..... | 90451 |
| Program Services Branch..... | 90452 |

Region V 90500

| | |
|---|-------|
| Office of Regional Director..... | 90510 |
| Disaster Assistance Employee Cadre..... | 90511 |

| | |
|--|----------------------------|
| Mitigation Division | 90520 |
| Hazard Identification and Risk Assessment Branch | 90521 |
| Community Mitigation Programs Branch | 90522 |
| Preparedness, Training and Exercises Division | 90530 |
| State and Local Assistance Branch | 90531 |
| Training, Exercises and Evaluation Branch | 90532 |
| | <u>Organization</u> |
| <u>Code</u> | |
| Response and Recovery Division | 90540 |
| Human Services Branch | 90541 |
| Infrastructure Branch | 90542 |
| Operations and Planning Branch | 90543 |
| Operations Support Division | 90550 |
| Information Systems Branch | 90551 |
| Program Services Branch | 90552 |
| <u>Region VI</u> | 90600 |
| Office of Regional Director | 90610 |
| Disaster Assistance Employee Cadre | 90611 |
| Mitigation Division | 90620 |
| Hazard Identification and Risk Assessment Branch | 90621 |
| Community Mitigation Programs Branch | 90622 |
| Preparedness, Training and Exercises Division | 90630 |
| State and Local Assistance Branch | 90631 |
| Training, Exercises and Evaluation Branch | 90632 |
| Response and Recovery Division | 90640 |
| Human Services Branch | 90641 |
| Infrastructure Branch | 90642 |
| Operations and Planning Branch | 90643 |
| Operations Support Division | 90650 |
| Information Systems Branch | 90651 |
| Program Services Branch | 90652 |
| <u>Region VII</u> | 90700 |
| Office of Regional Director | 90710 |
| Disaster Assistance Employee Cadre | 90711 |
| Mitigation Division | 90720 |
| Hazard Identification and Risk Assessment Branch | 90721 |
| Community Mitigation Programs Branch | 90722 |
| Preparedness, Training and Exercises Division | 90730 |
| State and Local Assistance Branch | 90731 |

| | |
|---|-------|
| Training, Exercises and Evaluation Branch | 90732 |
| Response and Recovery Division | 90740 |
| Human Services Branch | 90741 |
| Infrastructure Branch | 90742 |
| Operations and Planning Branch | 90743 |

| <u>Code</u> | <u>Organization</u> |
|--|----------------------------|
| Operations Support Division | 90750 |
| Information Systems Branch..... | 90751 |
| Program Services Branch..... | 90752 |
| <u>Region VIII</u> | 90800 |
| Office of Regional Director..... | 90810 |
| Disaster Assistance Employee Cadre..... | 90811 |
| Mitigation Division | 90820 |
| Hazard Identification and Risk Assessment Branch | 90821 |
| Community Mitigation Programs Branch | 90822 |
| Preparedness, Training and Exercises Division | 90830 |
| State and Local Assistance Branch | 90831 |
| Training, Exercises and Evaluation Branch | 90832 |
| Response and Recovery Division | 90840 |
| Human Services Branch | 90841 |
| Infrastructure Branch | 90842 |
| Operations and Planning Branch..... | 90843 |
| Operations Support Division | 90850 |
| Information Systems Branch..... | 90851 |
| Program Services Branch..... | 90852 |
| <u>Region IX</u> | 90900 |
| Office of Regional Director..... | 90910 |
| Disaster Assistance Employee Cadre..... | 90911 |
| Mitigation Division | 90920 |
| Hazard Identification and Risk Assessment Branch | 90921 |
| Community Mitigation Programs Branch | 90922 |
| Preparedness, Training and Exercises Division | 90930 |
| State and Local Assistance Branch | 90931 |
| Training, Exercises and Evaluation Branch | 90932 |

| | | |
|--------------------------------------|-------|-------|
| Response and Recovery Division | 90940 | |
| Human Services Branch | 90941 | |
| Infrastructure Branch | 90942 | |
| Operations and Planning Branch..... | 90943 | |
| Operations Support Division | 90950 | |
| Information Systems Branch..... | 90951 | |
| Program Services Branch..... | 90952 | |
| Pacific Division..... | | 90960 |

| <u>Code</u> | <u>Organization</u> | |
|--|----------------------------|--------------|
| <u>Region X</u> | | 91000 |
| Office of the Regional Director..... | | 91010 |
| Disaster Assistance Employee Cadre..... | | 91011 |
| Mitigation Division | | 91020 |
| Hazard Identification and Risk Assessment Branch | | 91021 |
| Community Mitigation Programs Branch | | 91022 |
| Preparedness, Training and Exercises Division | | 91030 |
| State and Local Assistance Branch | | 91031 |
| Training, Exercises and Evaluation Branch | | 91032 |
| Response and Recovery Division | | 91040 |
| Human Services Branch | | 91041 |
| Infrastructure Branch | | 91042 |
| Operations and Planning Branch..... | | 91043 |
| Operations Support Division | | 91050 |
| Information Systems Branch..... | | 91051 |
| Program Services Branch..... | | 91052 |