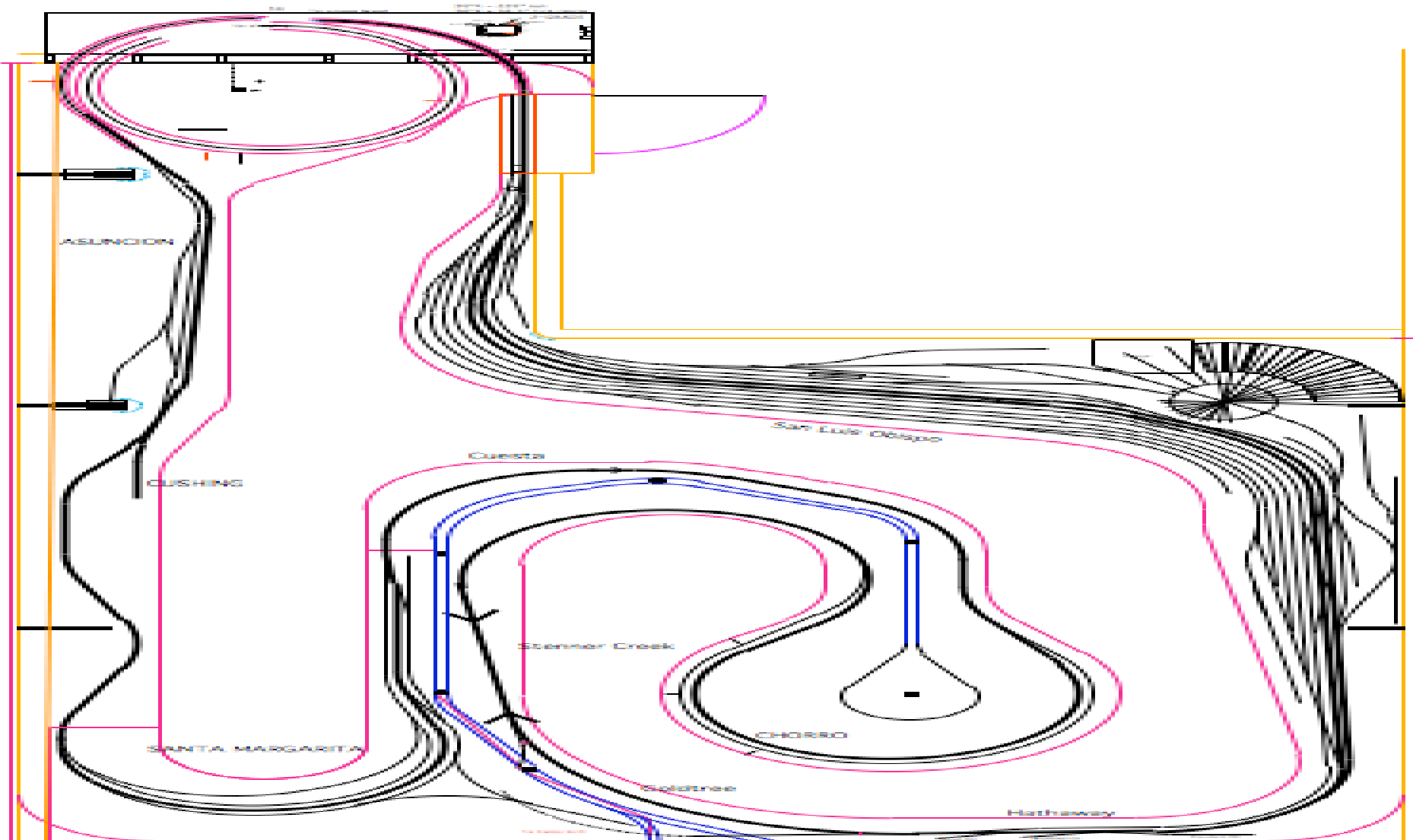


Los Osos Valley Railroad

- Modeling the SP Coast Line in 1949
- San Luis Obispo to Paso Robles CA
- HO, Code 83 main, Code 70 Other
- Hand Laid
- Steel Benchwork
- Masonite Splines and Plywood
Subroadbed

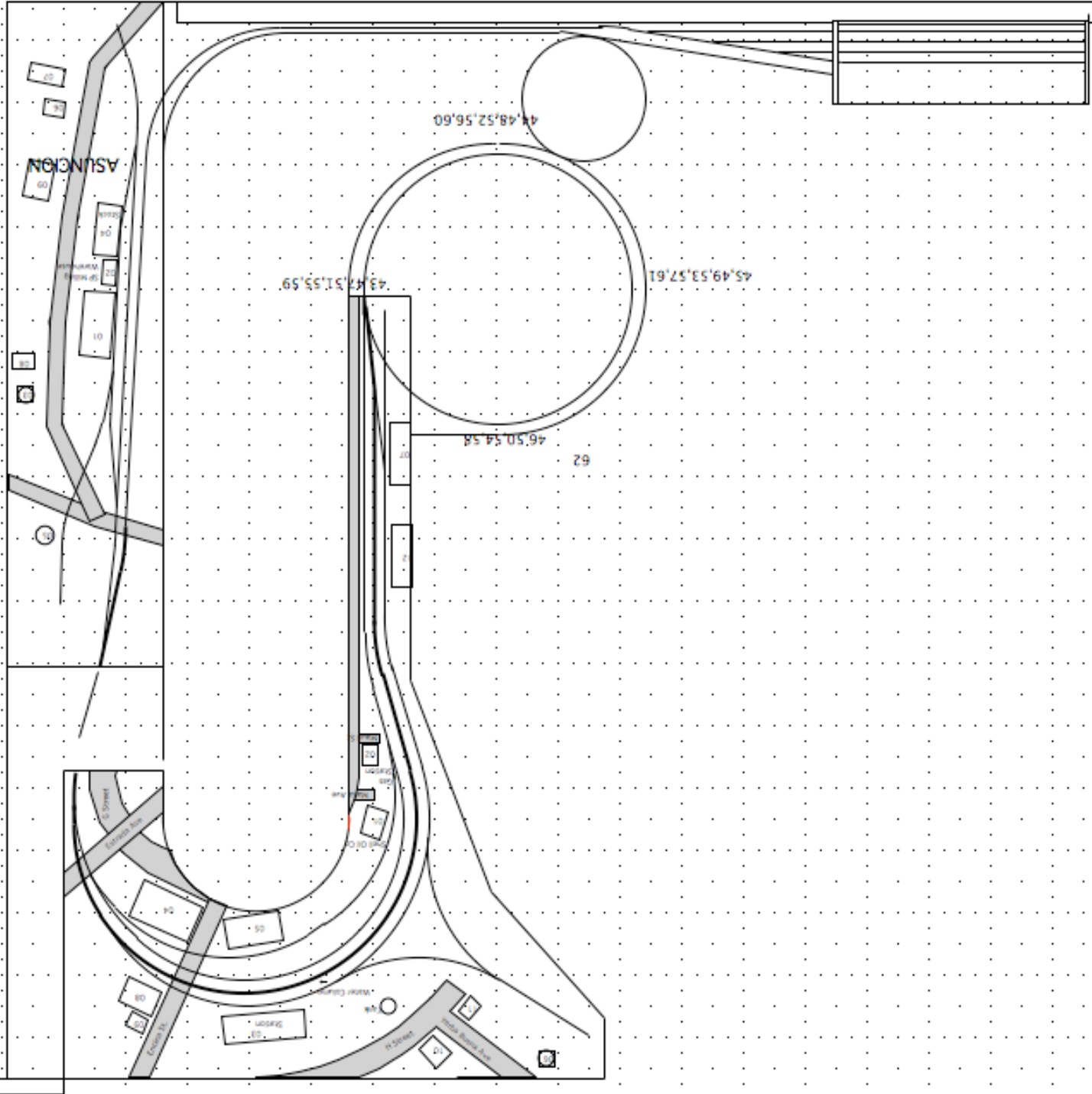
1995 - 2002

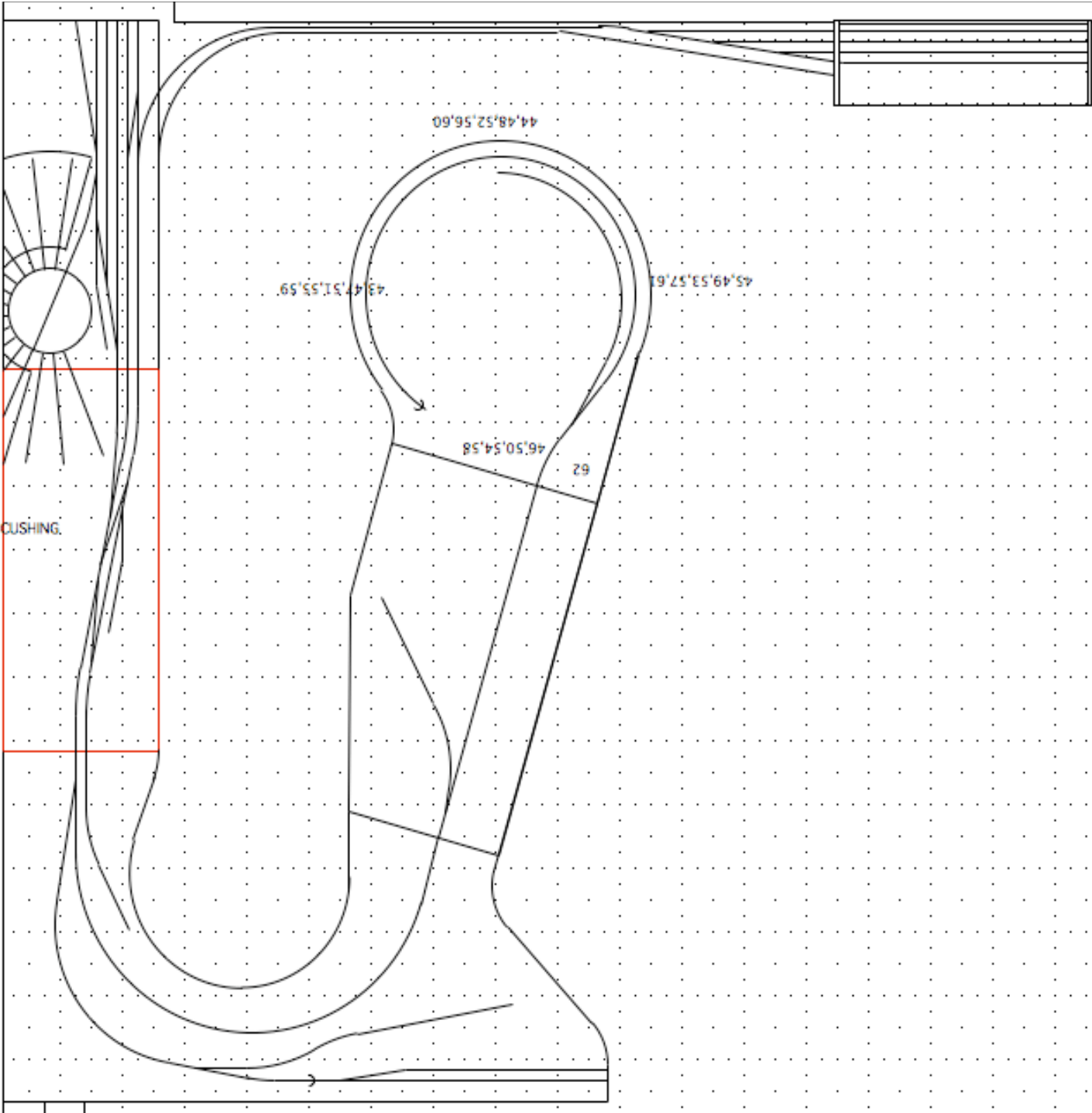
- 22' x 34' Railroad room
- San Luis Obispo to King City
- Construction Status
 - Benchwork complete
 - Mainline complete
 - Other track-work 25%
- Lost Trackage Rights



1995 - 2002

- False Starts
 - Temporary Layouts in Rental Garage
 - Utilizing Salvaged sections from old layout
 - Utilizing Old Module Sections
- Construction Status
 - Benchwork completed
 - Sections and Modules installed
- Never really happy with Design





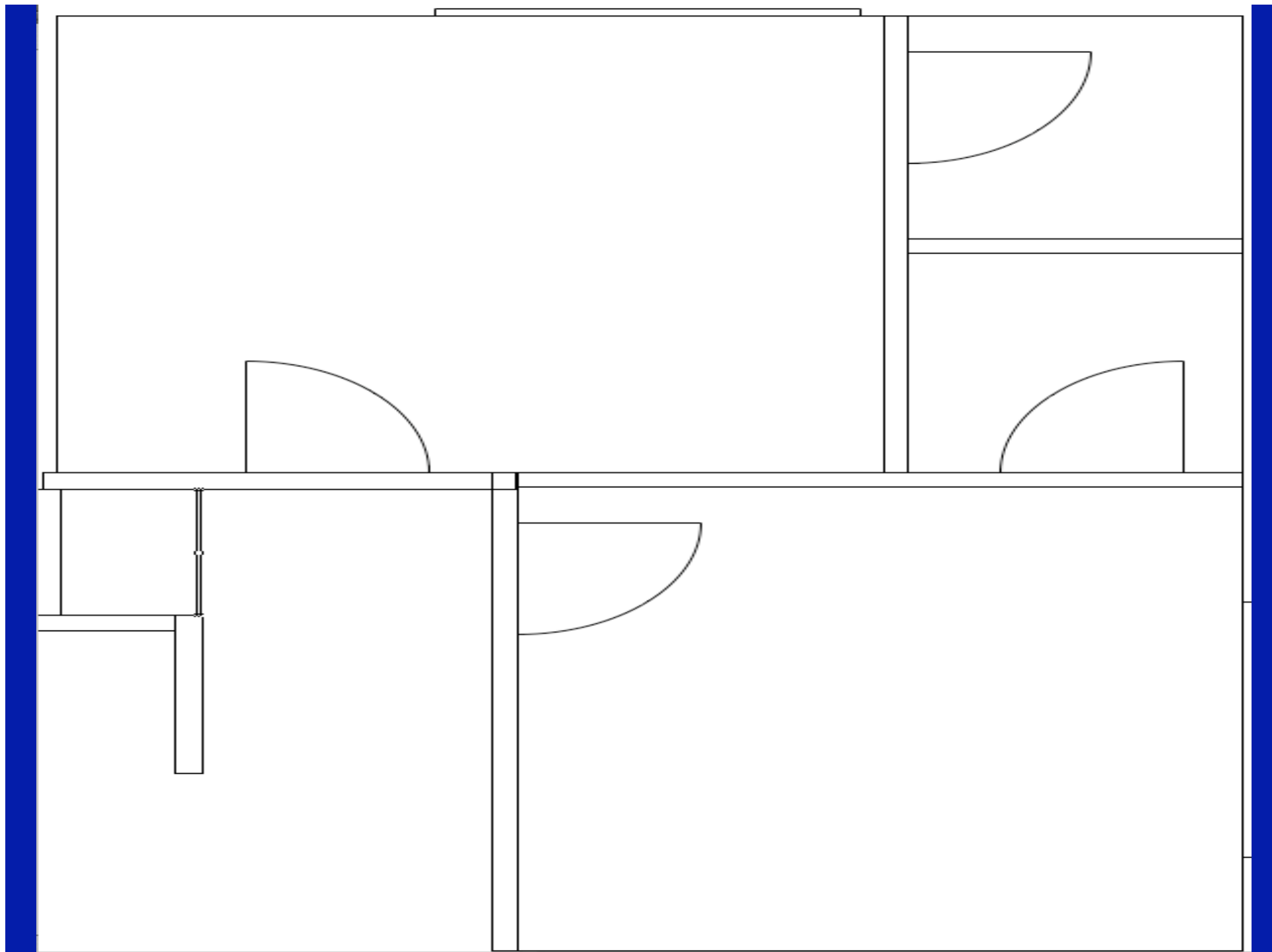


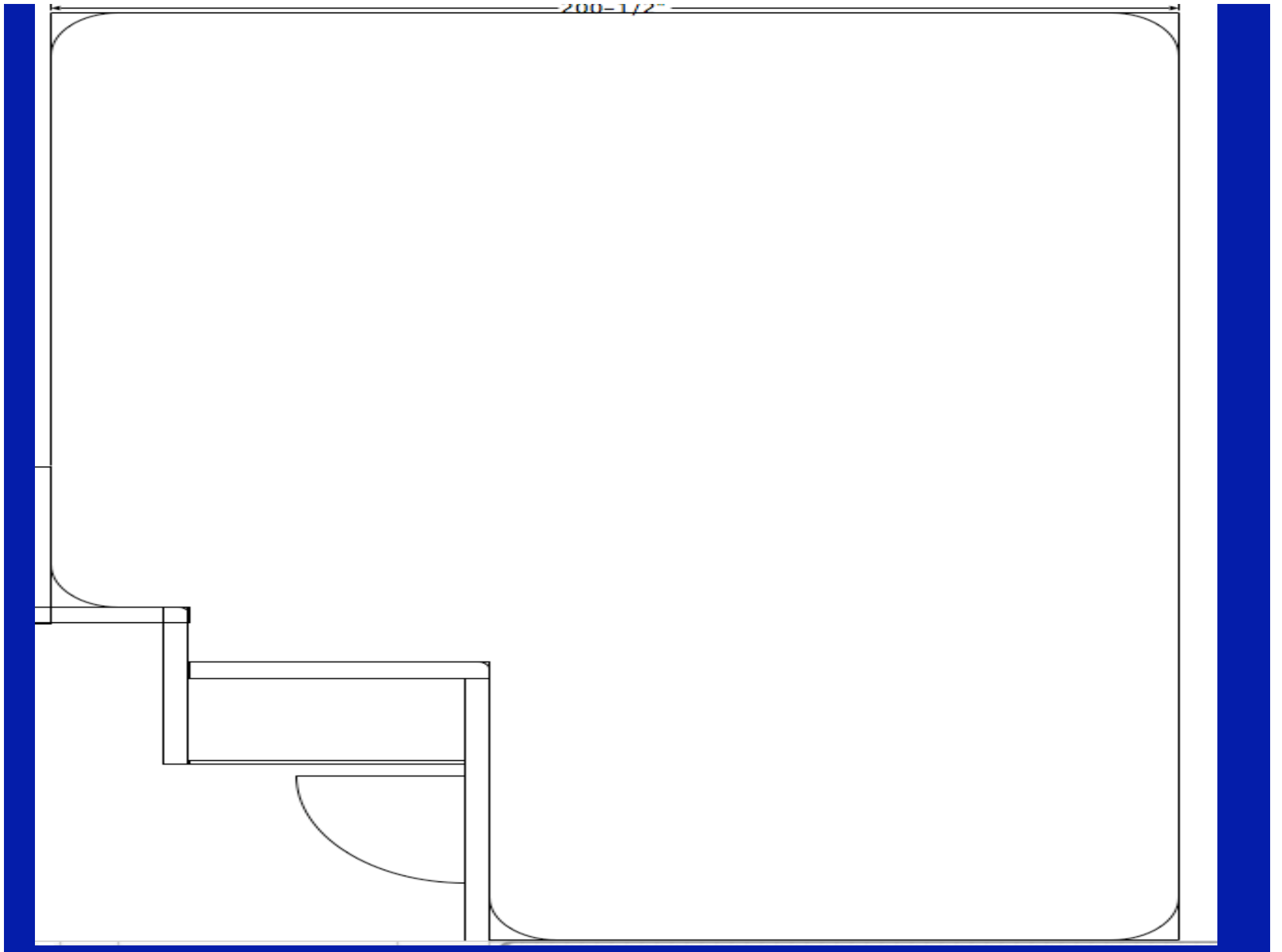
2006 to date

- Married a woman who enjoys trains
 - Went on Layout Visits
 - Recommended I use front corner of house for layout room
- Start Planning new layout
 - Start with a clean slate

The Space

- 21' x 16' Layout Space
- Use Garage as shop
- Room is climate controlled!
- A clean Slate
- Coved corners
- Layout lighting



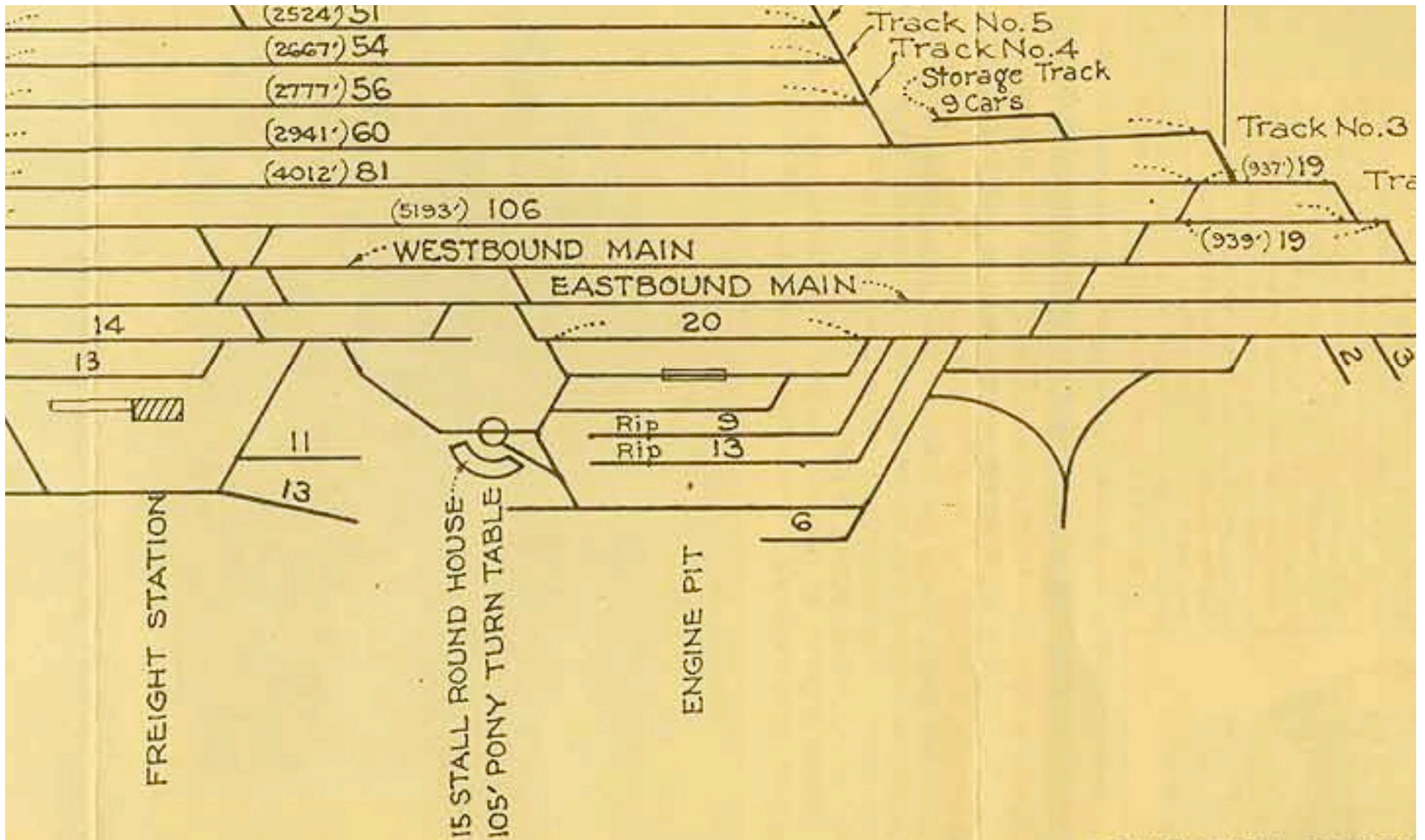


Planning Starts

- San Luis Obispo to Paso Robles CA
 - San Luis Obispo
 - Cuesta Grade
 - Santa Margarita
 - Atascadero
 - Paso Robles

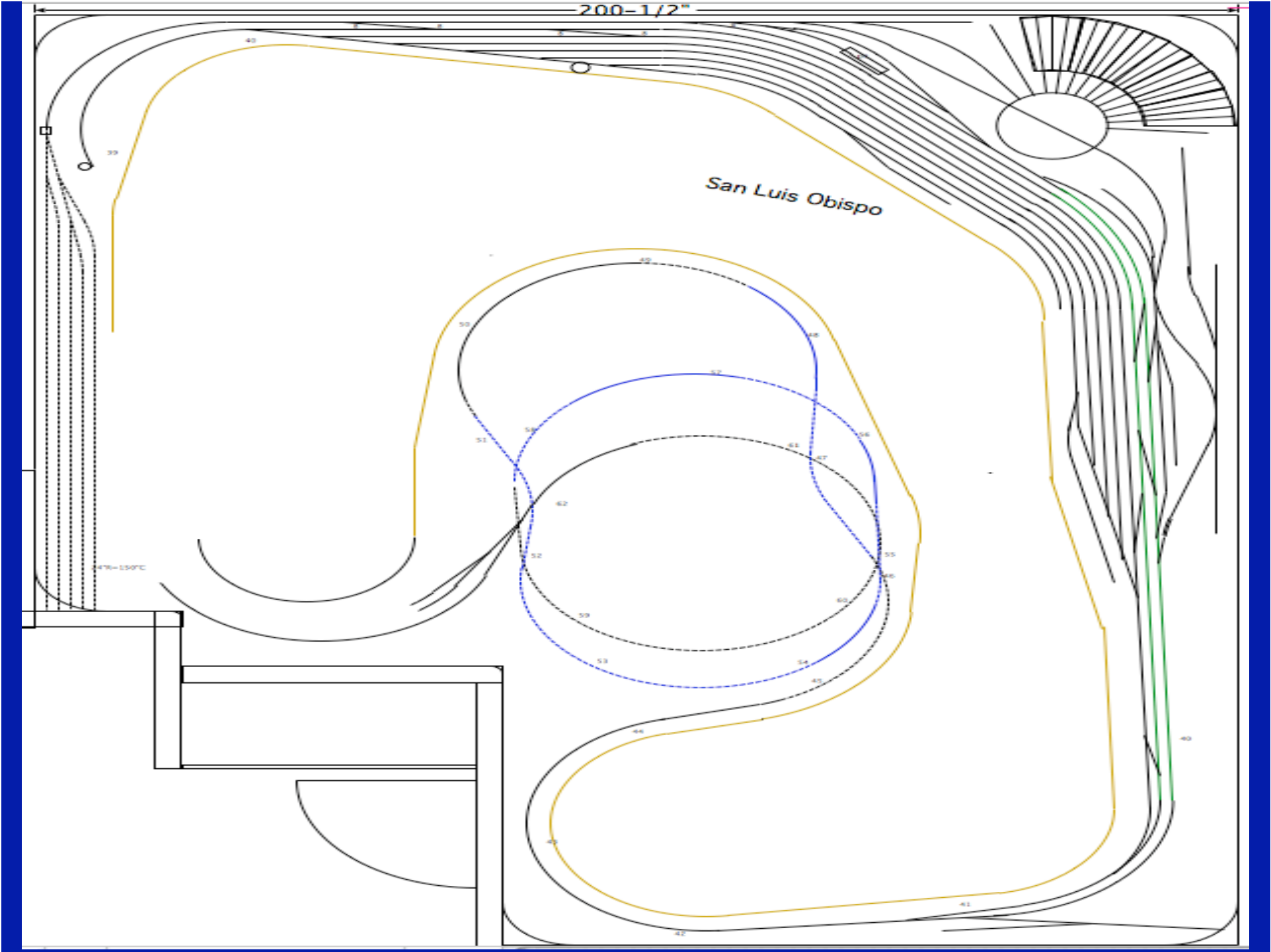
Research Tools

- Books
 - Coast Line series
 - Local History Books
- Station Plans
 - CSRRM
- Sanborn maps
- MacDraft



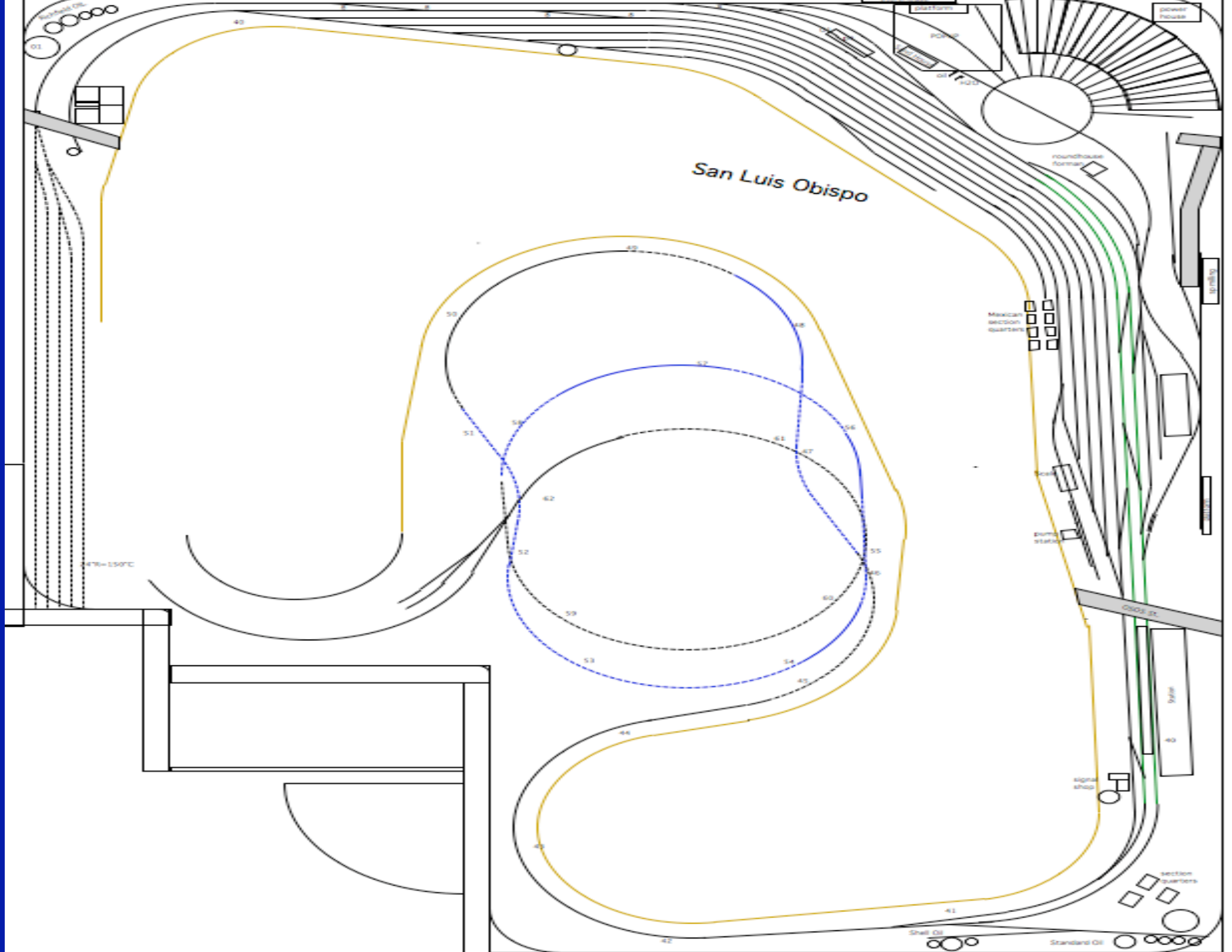
ntthesis, thus (341'),
 t from a point 50' East or
 to the Clear Point, or between

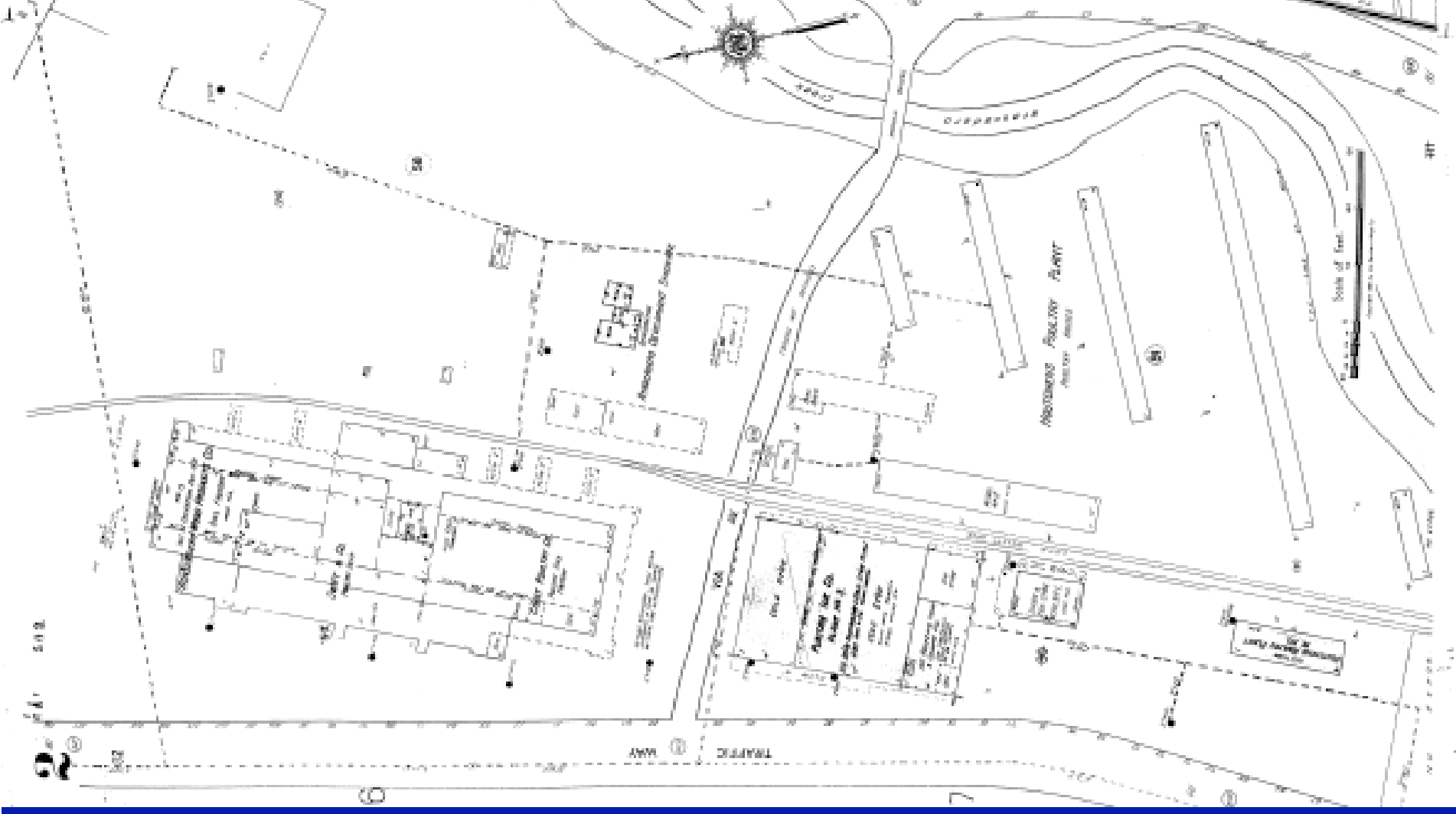
SOUTHERN PACIFIC
 PACIFIC LINE
SAN LUIS O
 Clear Standing



200-1/2"

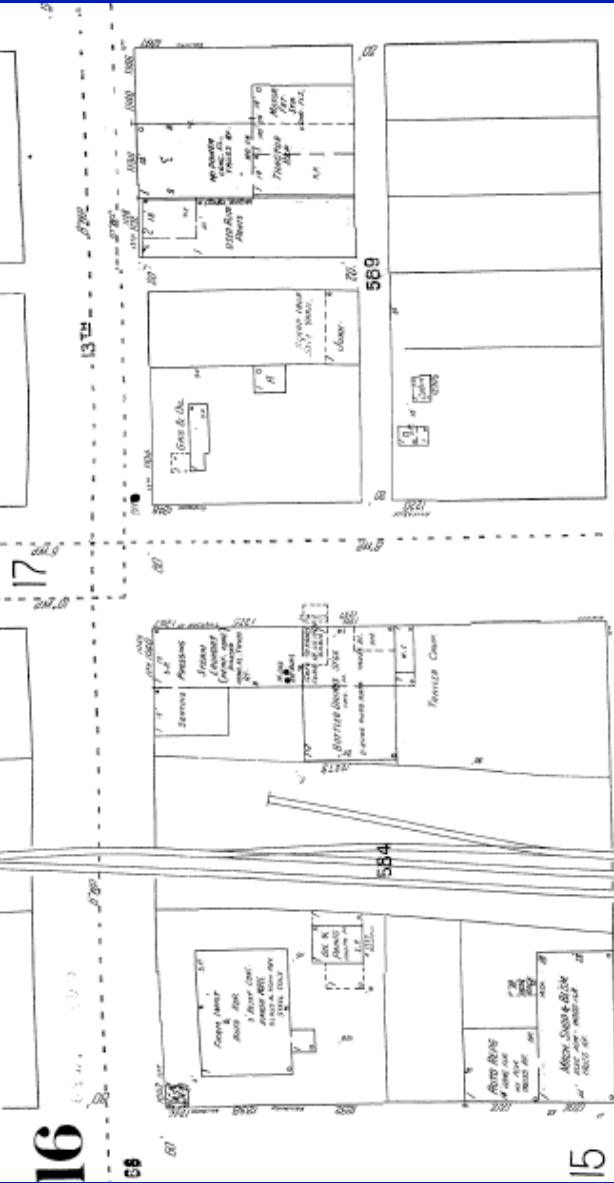
San Luis Obispo



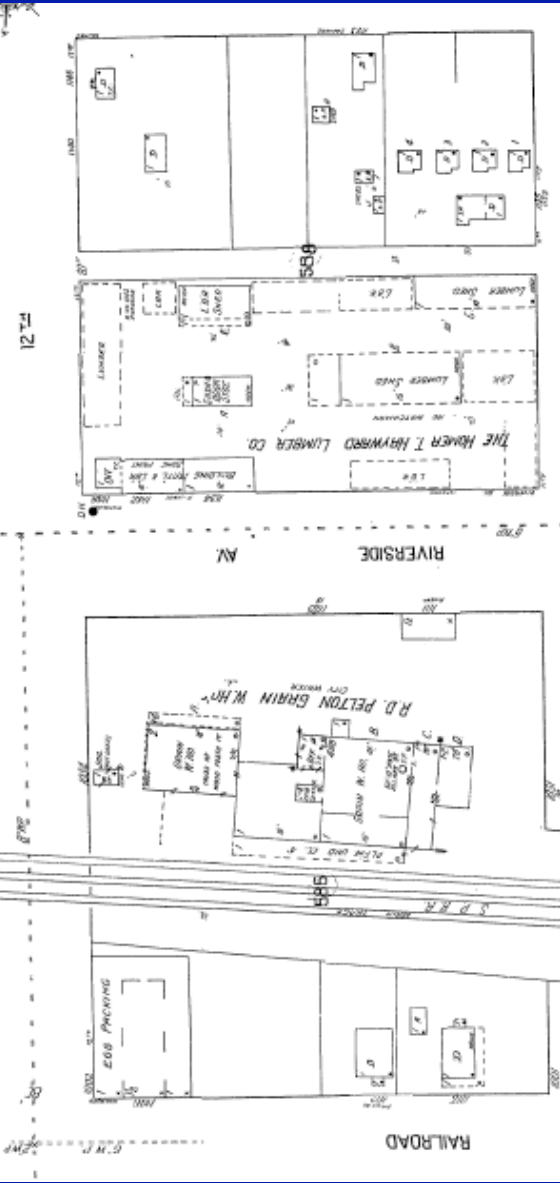


16

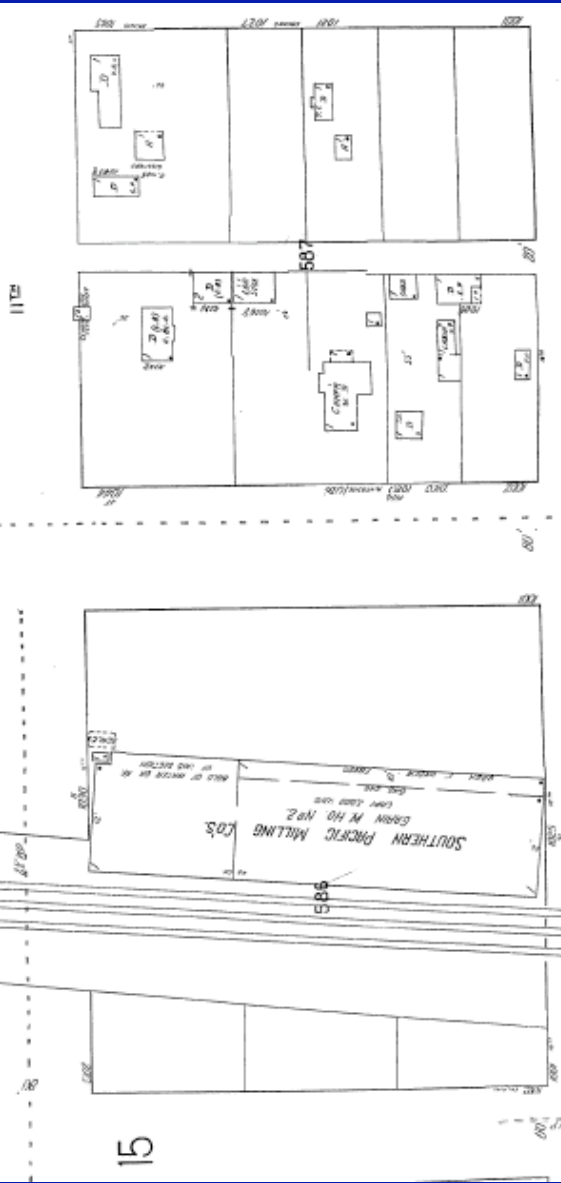
58



15



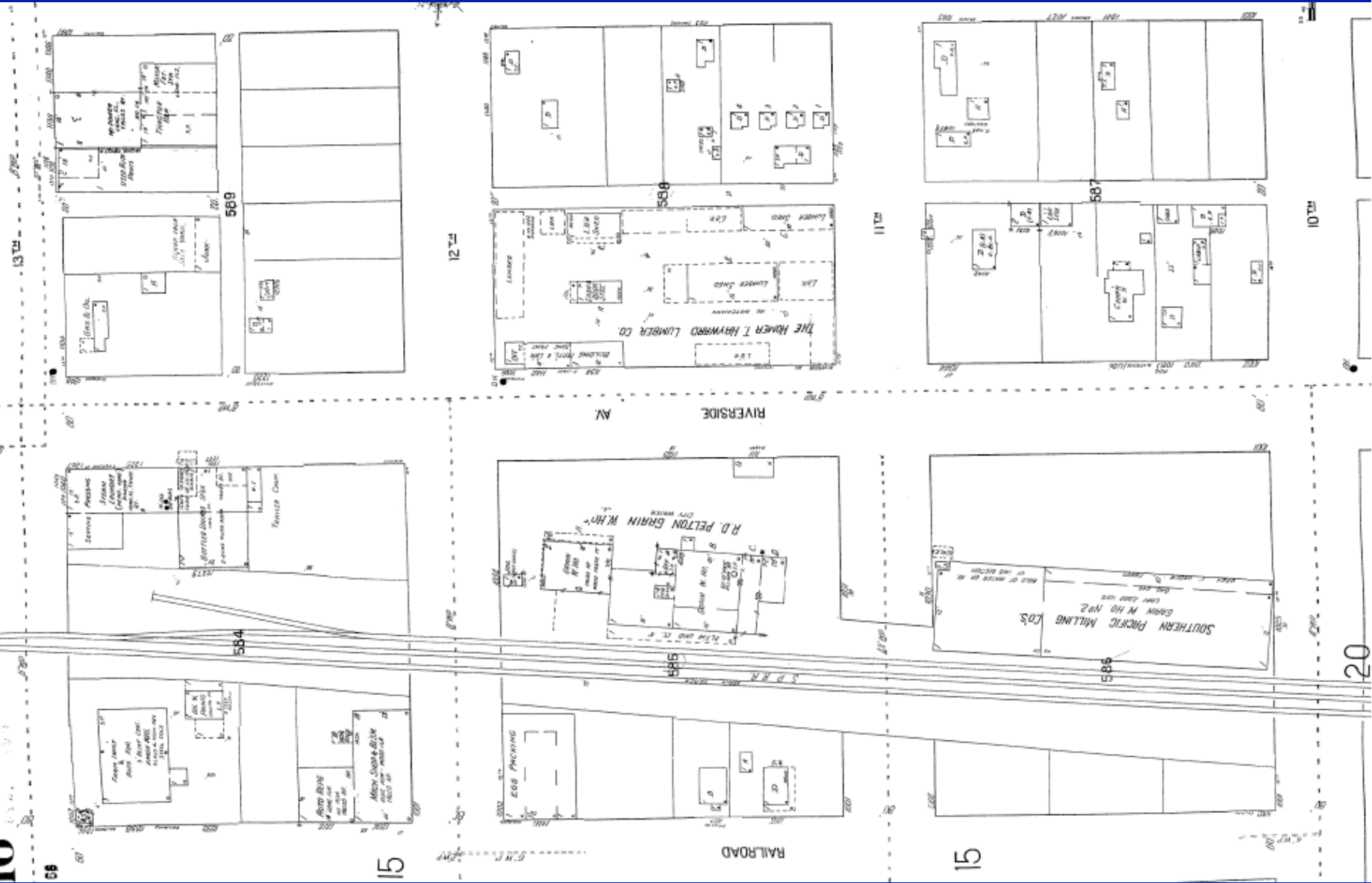
15

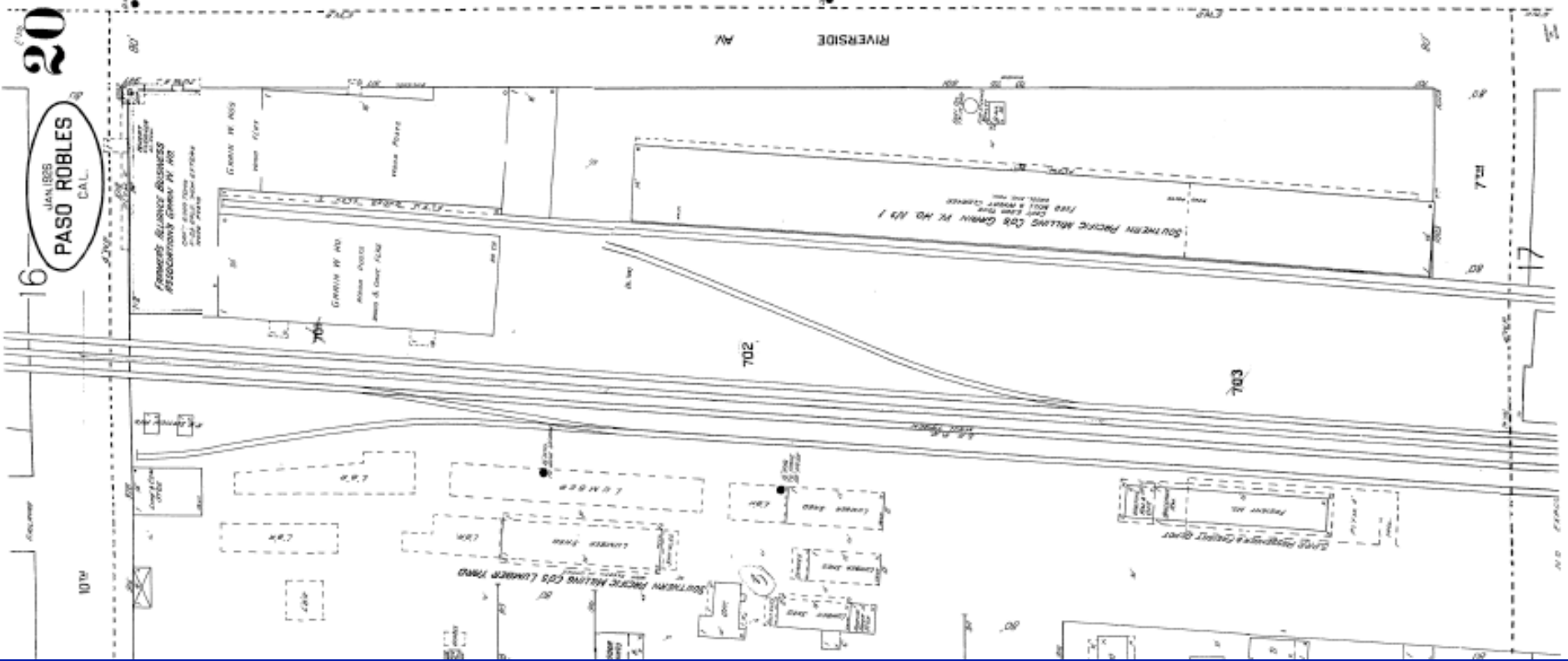


20

10.01

17



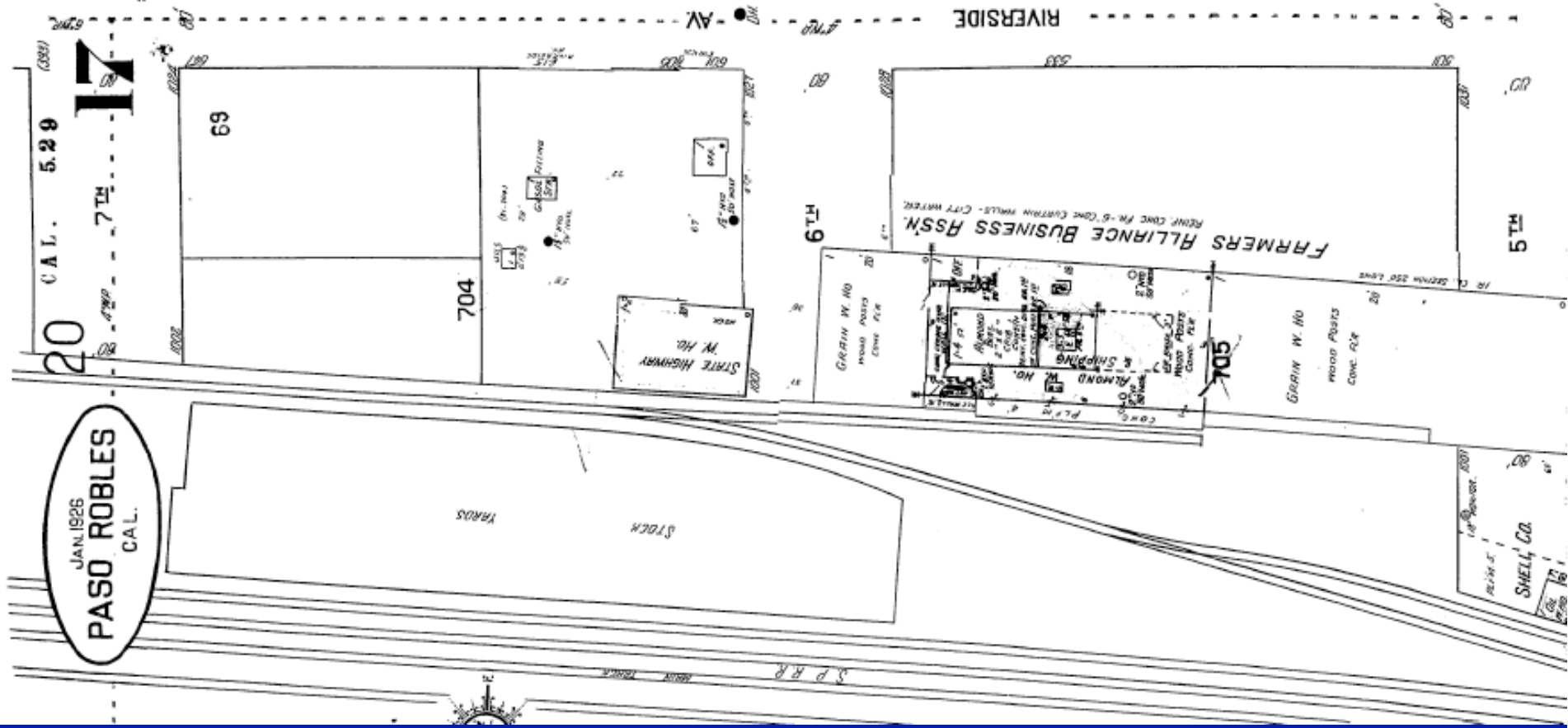


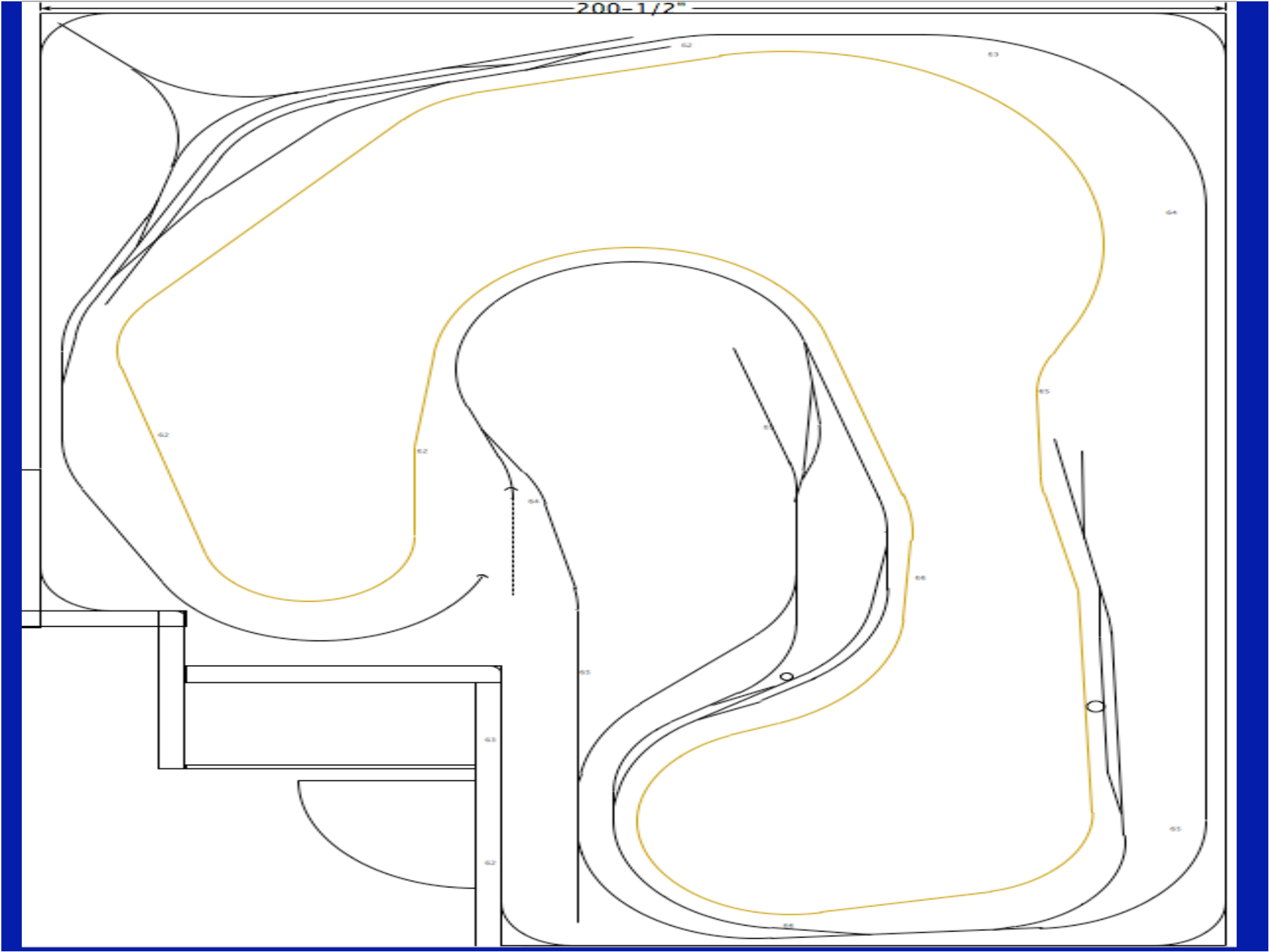
16
 20
 PASO ROBLES
 CAL.



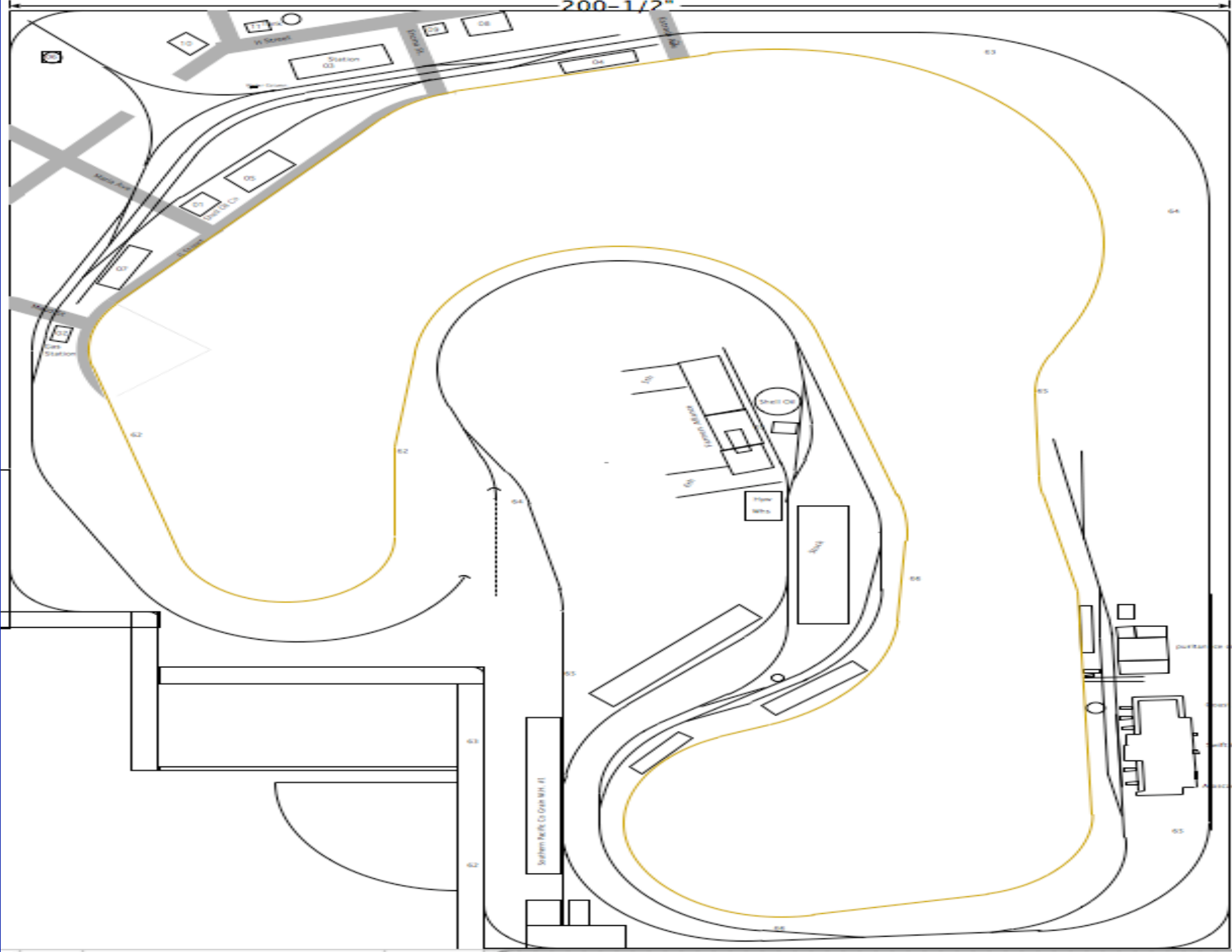
JAN 1926
PASO ROBLES
CAL.

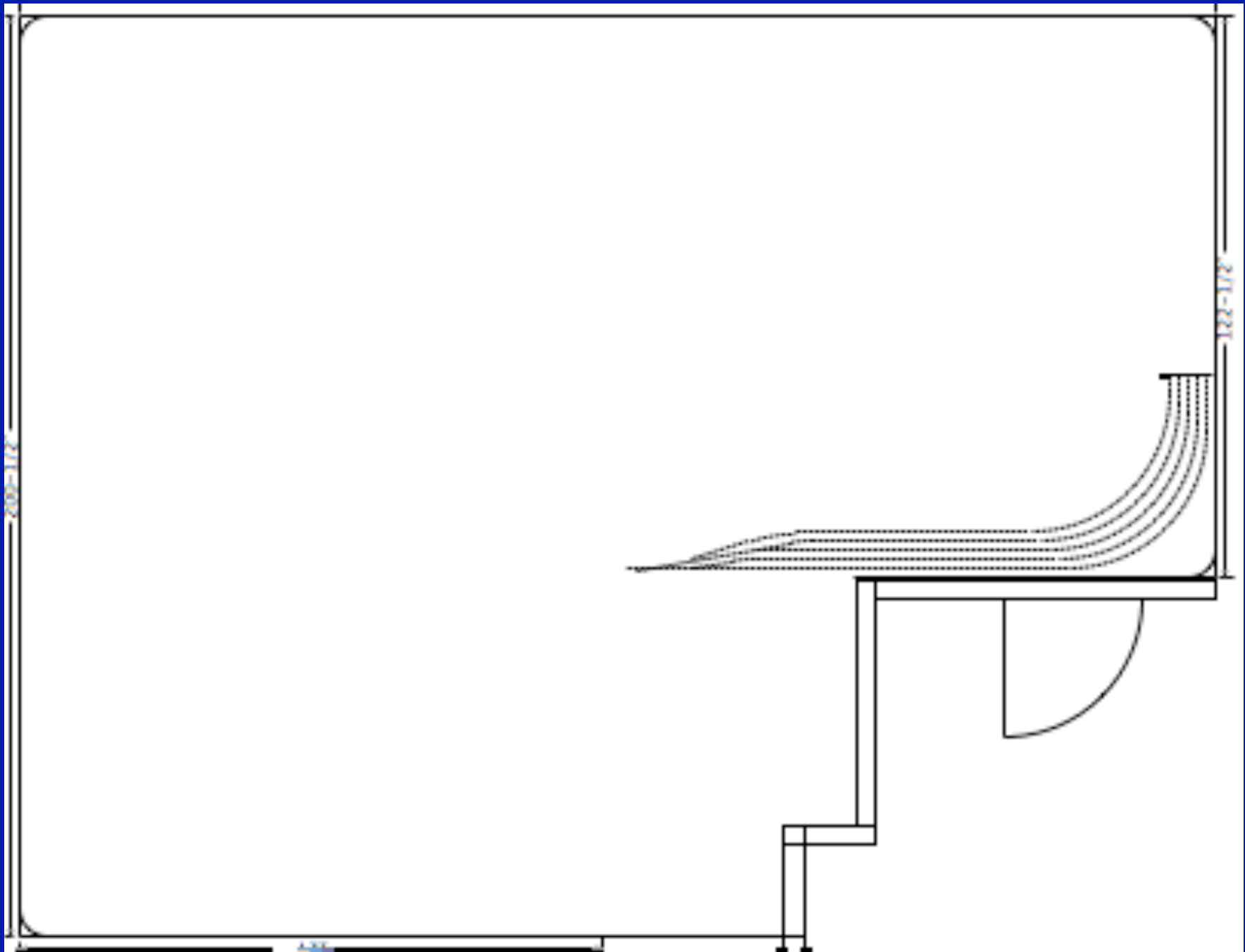
20 CAL. 5.29
7TH





200-1/2"





Whats Next?

Construction Scheduled

April 2007



TO BE CONTINUED