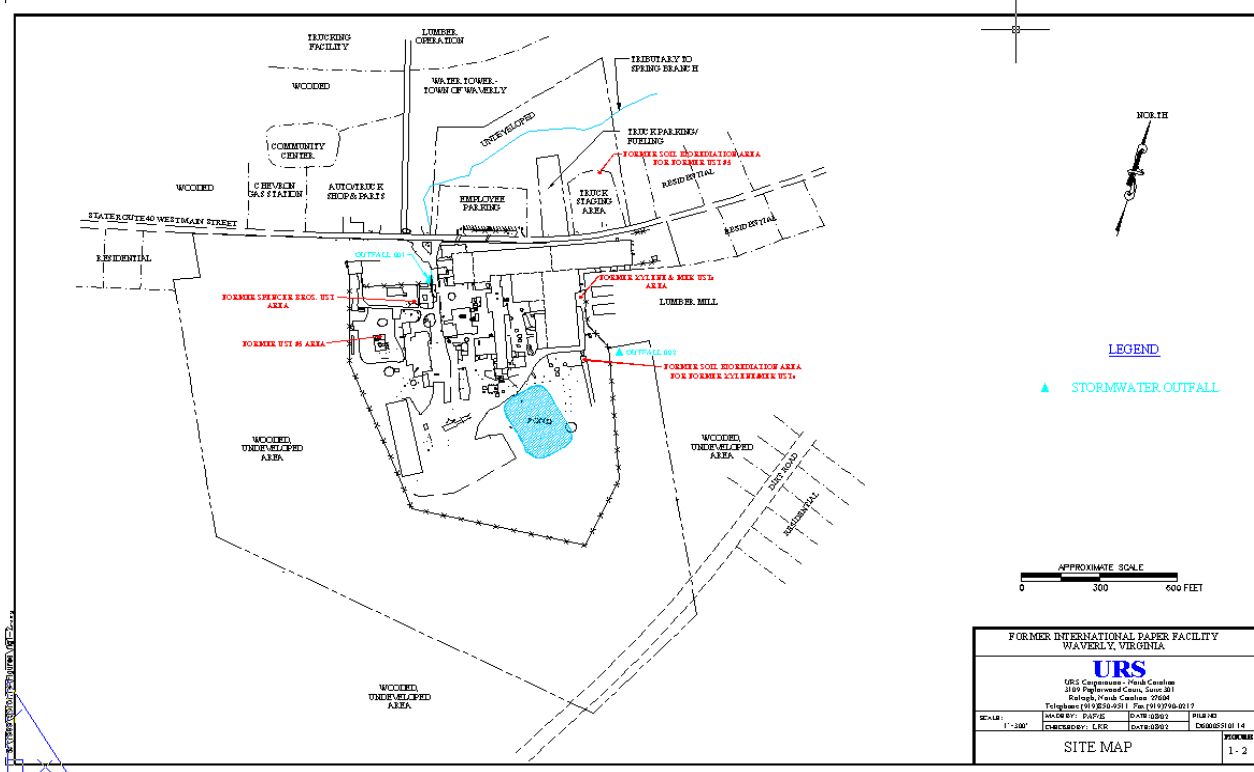


Region 3 GPRA Baseline RCRA Corrective Action Facility

Nevamar Co. LLC (Formerly: International Paper - Masonite Corp.)

721 West Main Street
Waverly, VA 23890-2600
Congressional District 4
EPA ID #: VAD044736213



Last Updated: 02/01/2009

Current Progress at the Site

On May 5, 2000, International Paper submitted a work plan which EPA approved in June 2000 with minor modifications. The work plan tasks include site wide surface water and groundwater sampling and installation of monitoring wells to determine the extent of site contamination. All tasks described in the work plan and additional tasks amended to the work plan were completed by 2001. The investigation revealed that, among several areas of concern, only one area, the

former fuel oil UST site, was found to be contaminated above regulatory limit and therefore requires further remediation.

Diesel grade oil was detected in one well located in the former UST excavation zone. Pursuant to RCRA Subtitle I regulations, EPA required International Paper to recover product from the well by bailing on periodic basis. Since September 2000, about 70 gallon of product was recovered and product thickness has reduced from 7 feet initially to around 2 feet by the end of 2002. Several studies were conducted at the former UST site during 2001 by geoprobes, cone penetrometers and vacuum recovery to better define the extent of the plume and to enhance product recovery.

In November 2002, International Paper submitted the RCRA Facility Lead Investigation and Proposed Corrective Measures report to EPA in which International Paper proposes to continue hand bailing as the final remedy. With concurrence by VADEQ, EPA approved the RCRA Facility Lead Investigation and Proposed Corrective Measures report.

As of July 1, 2002, Nevemar Company, LLC became the new owner of the facility. International Paper informed EPA by letter of July 12, 2002 that it will continue to obligate the work committed in the RCRA Facility Lead Program Agreement. On July 9, 2003, Nevemar announced the decision to close the Waverly facility. International Paper assured EPA that it will continue to meet the remediation requirements described in the EPA approved Corrective Measures report pursuant to the RCRA Facility Lead Agreement.

In accordance with EPA's approved remedy, International Paper has been conducting weekly product bailing and semi-annual groundwater sampling. The work is recorded in semi-annual summary reports submitted to EPA. The frequency of groundwater sampling will be reduced to annual basis after May 2005. As of October 2007, a total of 189 gallons (52gallons from GP-5 and 137 MW-R03) was recovered since weekly bailing began in October 2002. During the same period, the product thickness in the bailed wells has reduced from over 7 ft to 1.16 ft in MW-R03 and from over 8 feet to 1.86 feet in GP-5. In October 2006, an anomaly was observed in GP-5 in which the product thickness has rebounded to 5.5 ft. Subsequent investigation has ruled out any evidence of a new release and the anomaly was likely caused by natural water table fluctuations and apparent product thickness exaggeration due to uncorrected depth to water measurement in a small diameter (one inch) well. In October 2007, the product thickness in MW-R03 has returned to 1.86 feet.

As of October 2008, a total of 153 gallons of product was recovered from MW-R03, and 55 gallons was recovered from GP-5. The apparent product thickness was measured at 0.14 feet in GP-5, and 2.95 feet at MW-R03, and are within the expected fluctuation range.

Site Description

The International Paper, Masonite Corporation Waverly plant manufactures different grades of particle board. The plant was purchased by International Paper from Gray Products Company in

1966 and has been in operation since March 1967. The facility purchased scrap wood and saw dust as a raw material for the production of pressed flake board. The scrap wood is screened to remove impurities, ground to a fine particle size, and dried. The processed material has the consistency of fine powder which is bonded together with urea formaldehyde resin to form particle board. The wood powder is also used as the principal fuel for the facility boiler plant. Previous vinyl laminating processing involved the use of xylene and MEK as solvents. An onsite water aeration/settling basin is employed to reduce suspended solids and BOD discharge under a pre-treatment permit to a regional sewage treatment plant. Three former underground tank farms used for the storage of diesel fuel, gasolene, xylene and MEK were removed under the supervision of VADEQ.

Site Responsibility

The RCRA Corrective Action activities at the International Paper, Masonite Waverly plant are being conducted under a Facility Lead Agreement between EPA and International Paper, signed January 11, 2000.

Contaminants

The primary contaminants are xylene, MEK solvents and fuel oil constituents (BTEX and PAHs).

Community Interaction

There is no community interest or involvement at this time.

Institutional Controls

No institutional controls are currently in place.

Government Contacts

EPA Project Manager
Mr. Andrew Fan - 3LC20
U.S. Environmental Protection Agency - Region III
1650 Arch Street
Philadelphia, PA 19103-2029
Phone: (215) 814-3426
Email: fan.andrew@epa.gov

Richard Criqui

Virginia Department of Environmental Quality
P.O. Box 10009
Richmond, VA 23240-0009
Email: rjcriqui@deq.virginia.gov

For more information about EPA's corrective action webpage, including Environmental Indicators, please visit our site at: www.epa.gov/reg3wcmd/correctiveaction.htm

Facility Contact

Phil Slowiak
Project Manager
INTERNATIONAL PAPER
7445 New Ridge Road
Hanover, MD 21076
Tel: (410) 694-8680
Fax: (410) 694-8659
Cell: (410) 693-9604