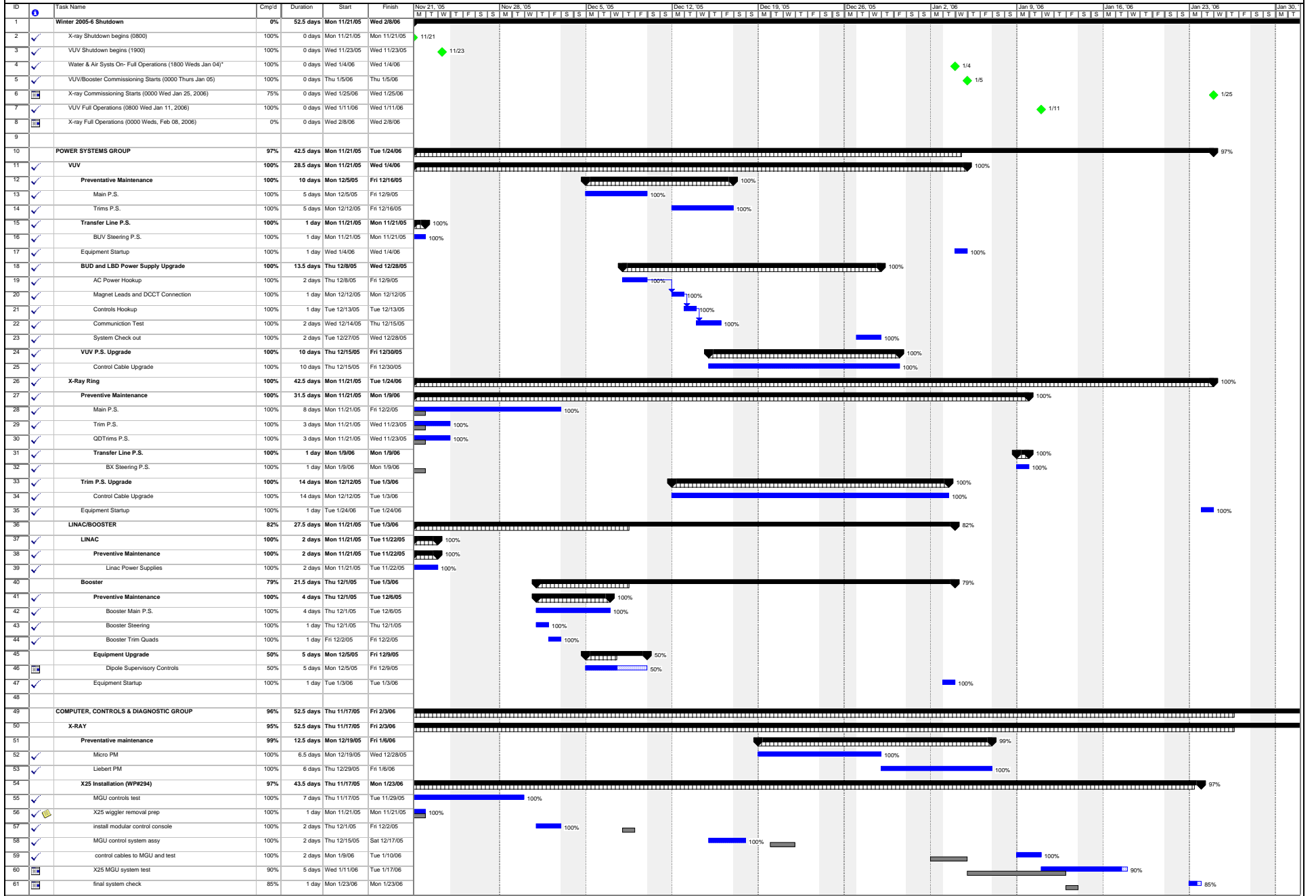


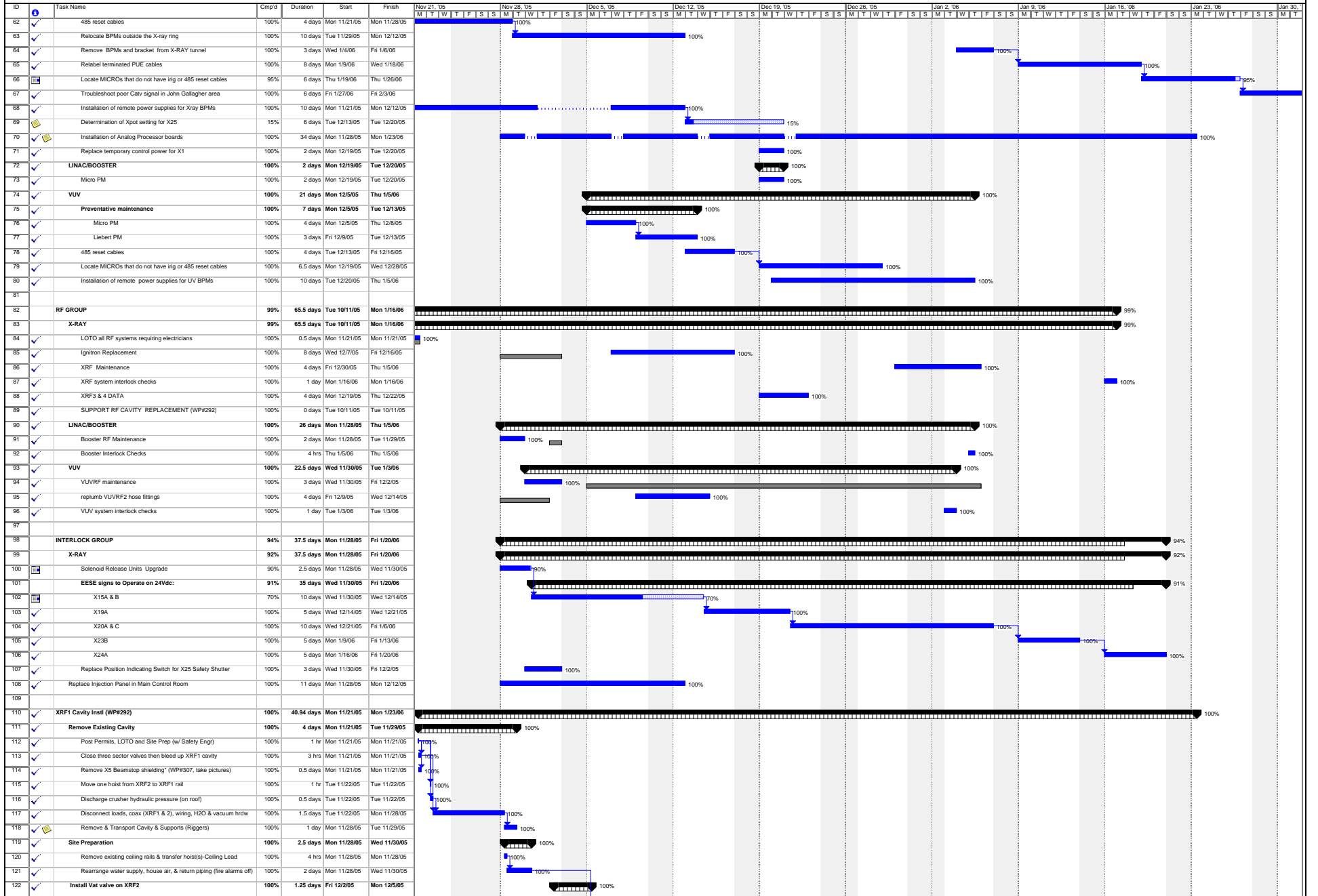
Operations and Engineering Division

Shutdown Overview



Operations and Engineering Division

Shutdown Overview



Project: NLS Winter Shutdown 2005
Date: Fri 2/3/06



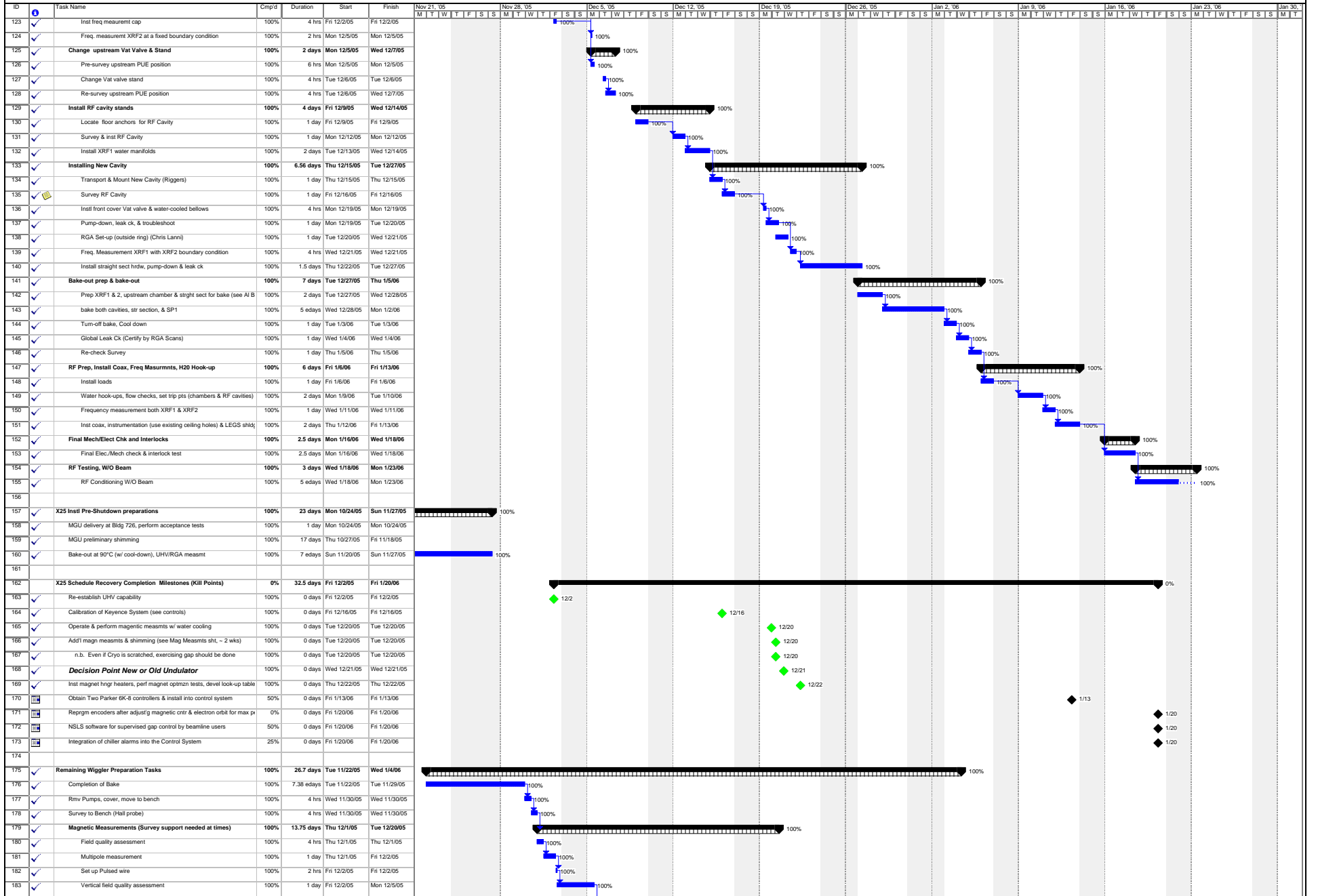
Latest Possible removal of X-25 Wiggler (Operations Winter Shutdown 2006 February 3rd Status.mpp)

Revised 7 January 2006

Printed 1:55 PM Fri 2/3/06

Operations and Engineering Division

Shutdown Overview



Project: NSLS Winter Shutdown 2005
Date: Fri 2/3/06



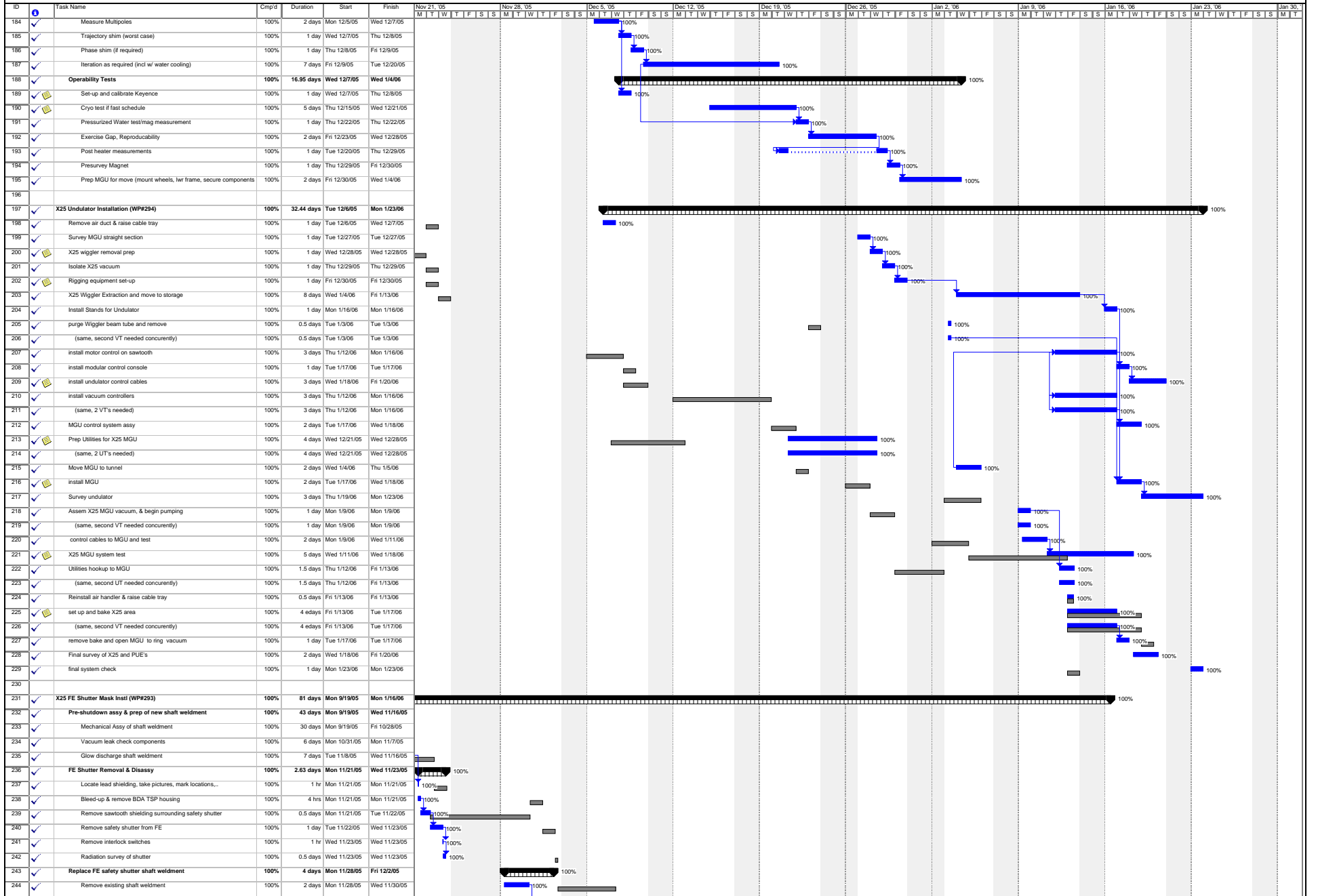
Latest Possible removal of X-25 Wiggler (Operations Winter Shutdown 2006 February 3rd Status.mpp)

Revised 7 January 2006

Printed 1:55 PM Fri 2/3/06

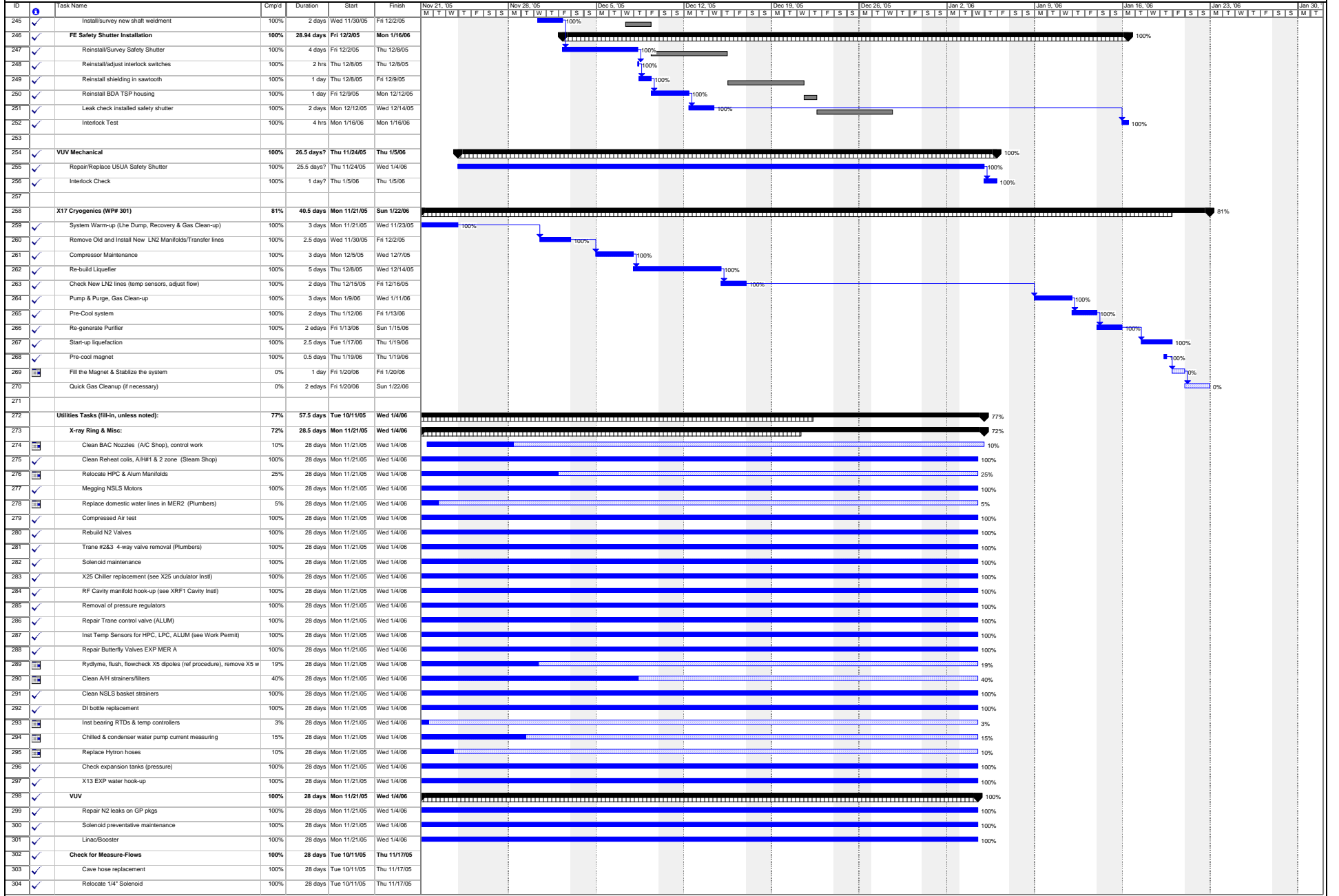
Operations and Engineering Division

Shutdown Overview



Operations and Engineering Division

Shutdown Overview



Project: NSLS Winter Shutdown 2005
Date: Fri 2/3/06

■ Critical
▬ Critical Progress
▬ Split
▬ Task Progress
▬ Baseline Split
▬ Task Progress
▬ Baseline
▬ Baseline Milestone
▬ Milestone
▬ Summary Progress
▬ Summary
▬ Project Summary
▬ External Milestone
▬ External Tasks
▬ Deadline

Latest Possible removal of X-25 Wiggler (Operations Winter Shutdown 2006 February 3rd Status.mpp)

Revised 7 January 2006

Printed 1:55 PM Fri 2/3/06