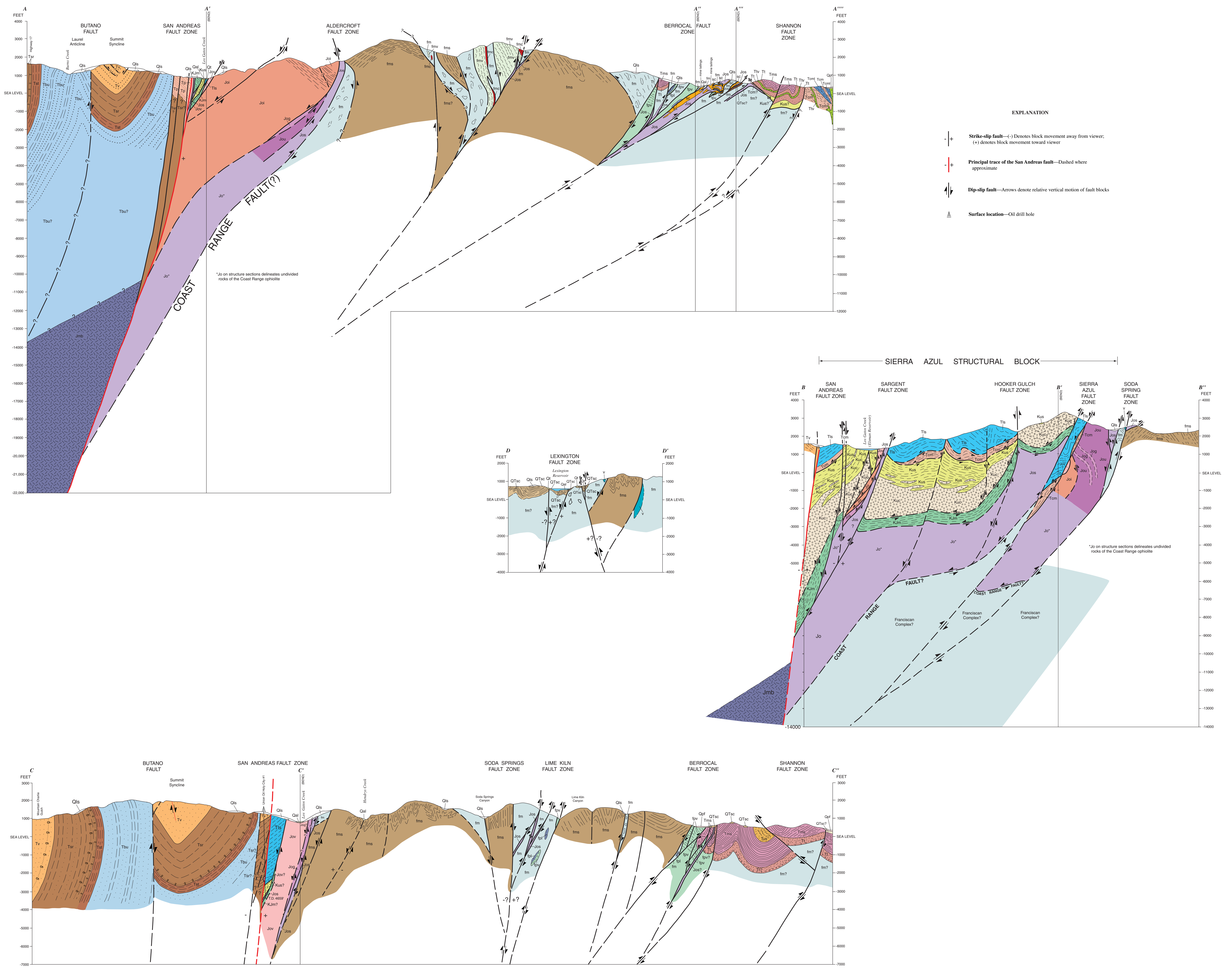


STRUCTURE SECTIONS OF THE LOS GATOS QUADRANGLE



GEOLOGIC MAPS AND STRUCTURE SECTIONS OF THE SOUTHWESTERN SANTA CLARA VALLEY AND SOUTHERN SANTA CRUZ MOUNTAINS, SANTA CLARA AND SANTA CRUZ COUNTIES, CALIFORNIA

By
R.J. McLaughlin, J.C. Clark, E.E. Brabb, E.J. Helley, and C.J. Colón
2001

Edited by J.L. Ziegler
Manuscript approved for publication July 20, 2001

Any use of trade, firm, or product names in this publication is for descriptive purposes only and does not imply endorsement by the U.S. Government.

This map was prepared on an electronic plotter directly from digital files. Dimensional calibration may vary between electronic files and between A and V directions on the same plotter, and paper may change size due to atmospheric conditions. Therefore, scale and proportions may not be true on plots of this map.

For sale by U.S. Geological Survey, Information Services, Box 25286, Federal Center, Denver, CO 80225, 1-888-456-4855

Digital files available on World Wide Web at <http://pubs.usgs.gov/of/2001/mf2373/>