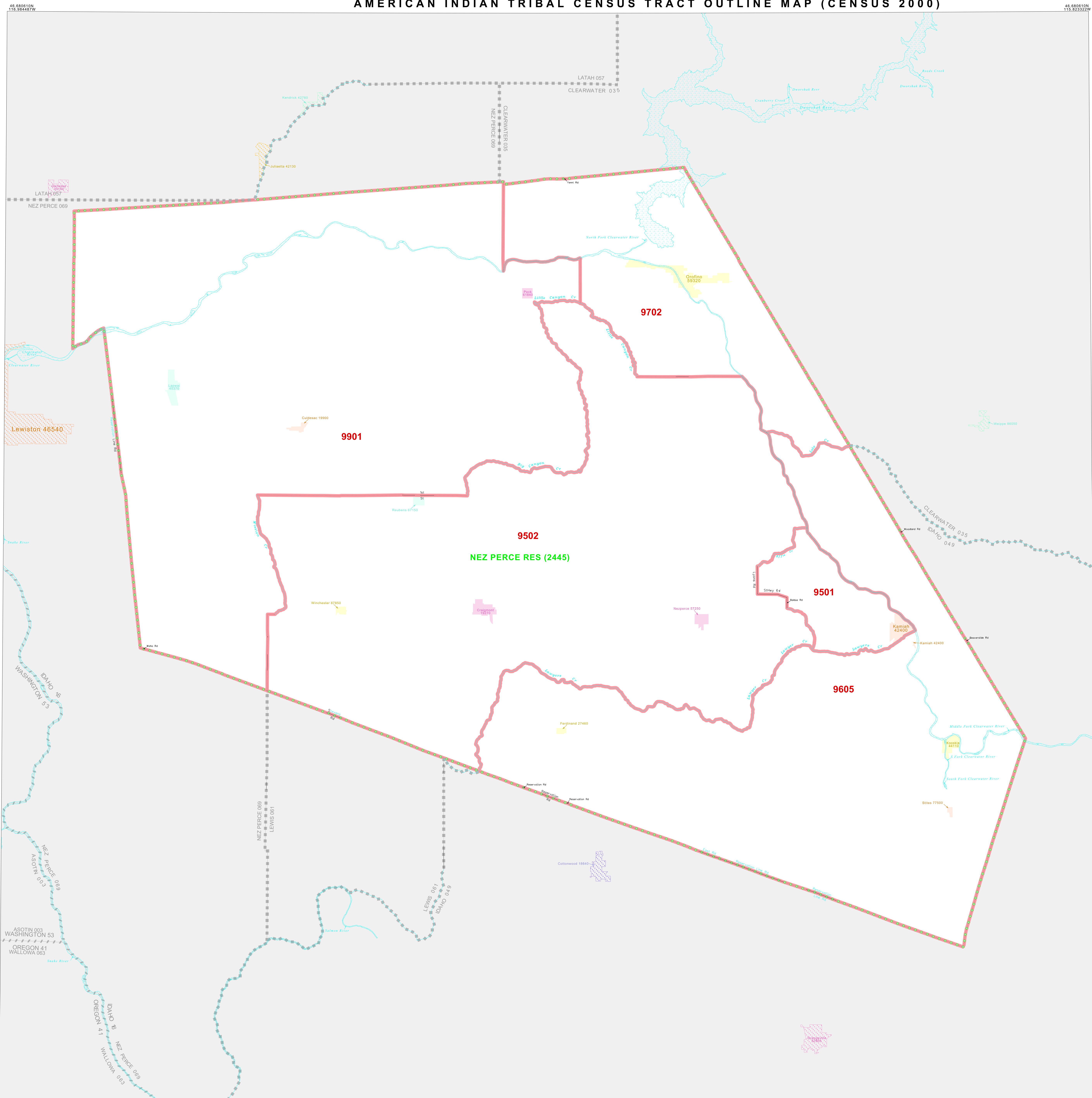


AMERICAN INDIAN TRIBAL CENSUS TRACT OUTLINE MAP (CENSUS 2000)



LEGEND

| SYMBOL | NAME STYLE |
|--------|---|
| ***** | INTERNATIONAL |
| ***** | AIR (FEDERAL) |
| ***** | Trust Land |
| ***** | OTSA / TDSA |
| ***** | AMERICAN INDIAN TRIBAL SUBDIVISION |
| ***** | AIR (State) |
| ***** | SDA/ISA |
| ----- | STATE (or statistically equivalent entity) |
| ----- | COUNTY (or statistically equivalent entity) |
| ----- | Place within Subject Entity |
| ----- | Incorporated Place / GDP |
| ----- | Place outside of Subject Entity |
| ----- | Incorporated Place / GDP |
| ----- | Tribal Census Tract¹ |

ABBREVIATION REFERENCE: AIR - American Indian Reservation; Trust Land - Off-Reservation Trust Land; OTSA - Oklahoma Tribal Statistical Area; TDSA - Tribal Designated Statistical Area; SDA/ISA - State Designated American Indian Statistical Area; GDP - Census Designated Place

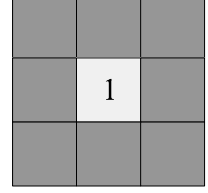
FEATURES

| | |
|--------------------|---------------------|
| All Roads | Stream/Shoreline |
| Railroad | Inter-Tribal Stream |
| Pipe/Pump Line | River/Lake |
| Physical Feature | Glacier |
| Nonviable Boundary | |

Inset **Out Area**

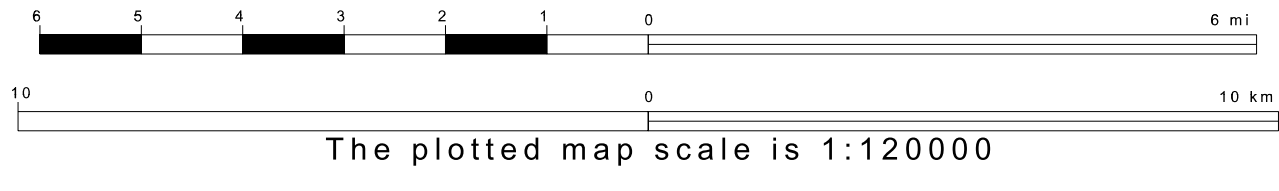
¹ This map shows tribal census tract boundaries and numbers. A tribal census tract is a type of census tract defined within a federally recognized American Indian reservation or off-reservation trust land for the purpose of providing data based on an American Indian hierarchy rather than by state and county.

Key to Adjacent Sheets



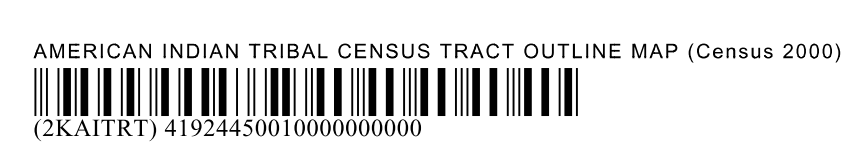
SHEET 1 OF 1 PARENT SHEET
TOTAL SHEETS: 1 (Index 0; Parent 1; Inset 0)

45.878072N
116.984487W



45.878072N
116.984487W

ENTITY TYPE: American Indian Reservation
NAME: Nez Perce Reservation (2445)
ST: Idaho



All legal boundaries and names are as of January 1, 2000. The boundaries shown on this map are for Census Bureau statistical data collection and tabulation purposes only; their depiction and designation for statistical purposes does not constitute a determination of jurisdictional authority or rights of ownership or entitlement. Source: U.S. Census Bureau's TIGER database (Census 2000). Projection: State-based Albers' Equal Area