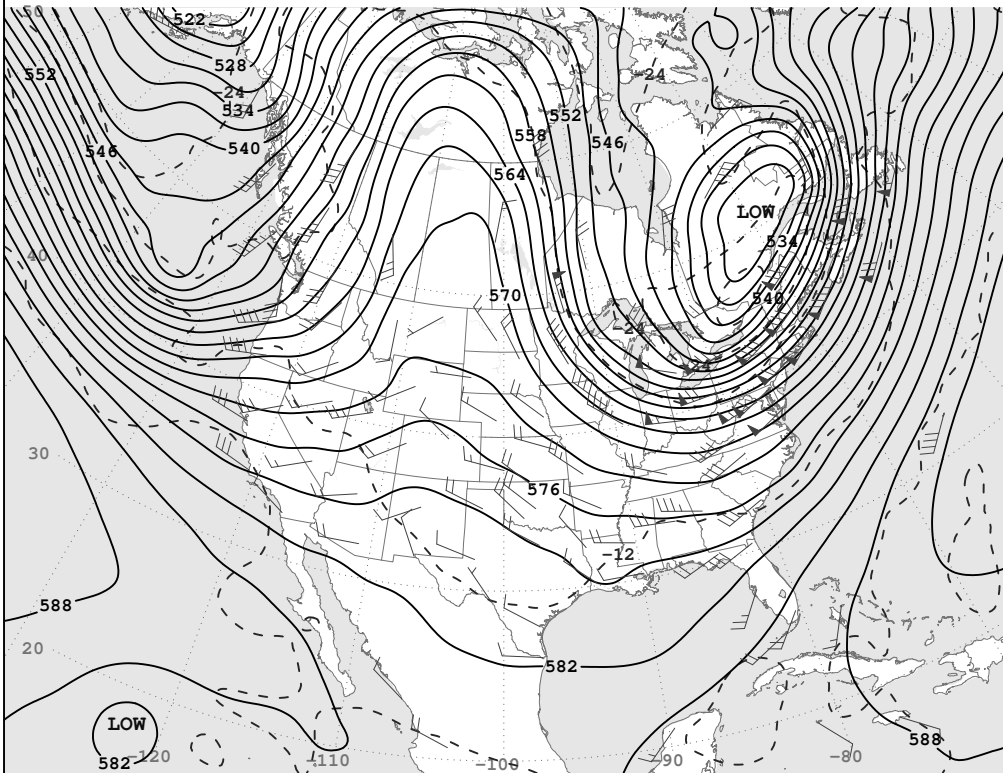
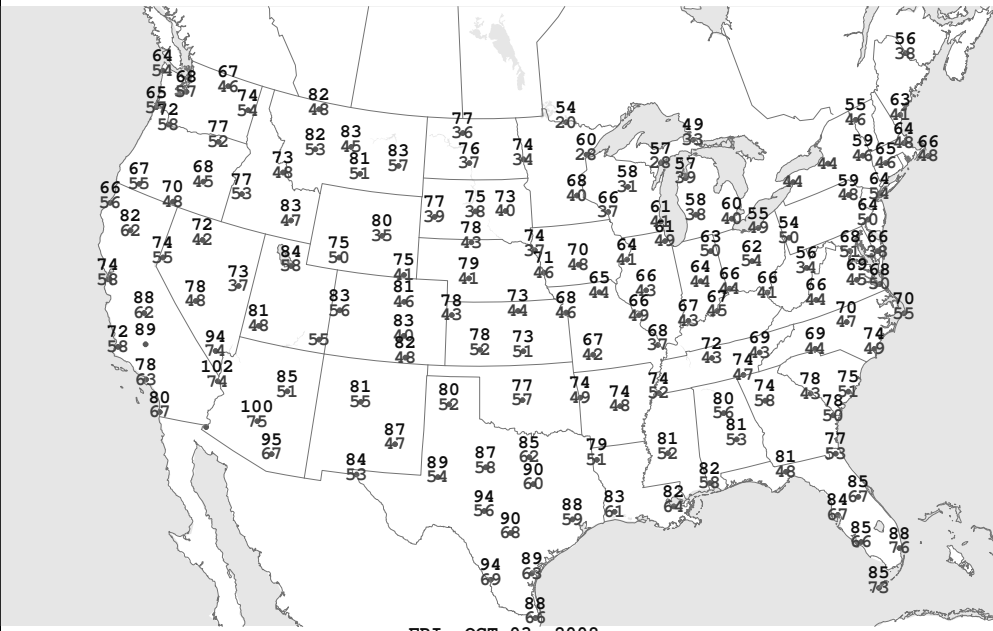


Surface Weather Map and Station Weather at 7:00 A.M. E.S.T.



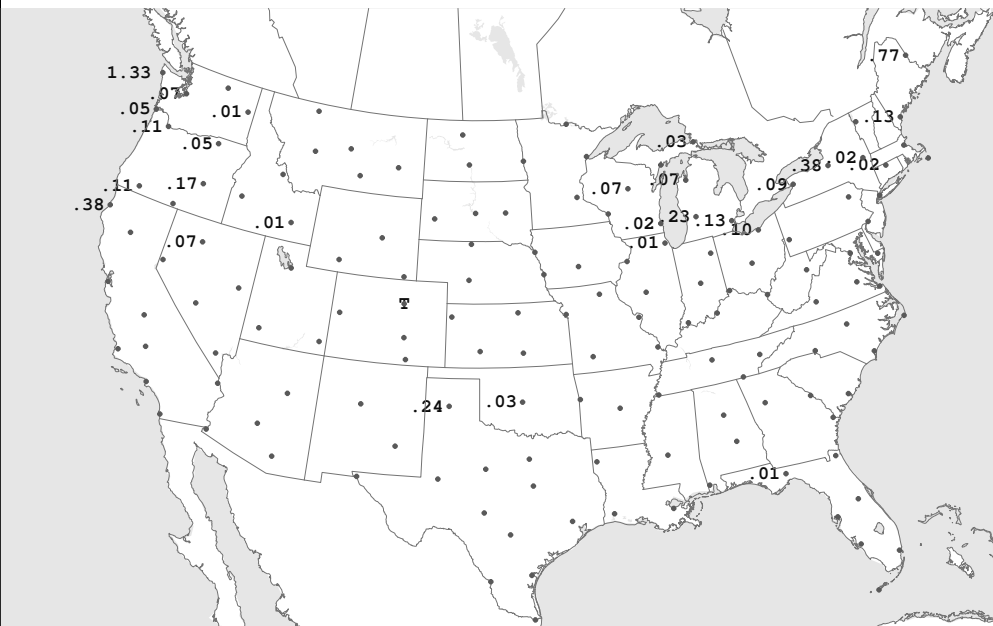
FRI, OCT 03, 2008

500-Millibar Height Contours at 7:00 A.M. E.S.T.



FRI, OCT 03, 2008

Highest and Lowest Temperature



FRI, OCT 03, 2008

24-hour Precipitation Areas and Amounts Ending 7:00 A.M. E.S.T.