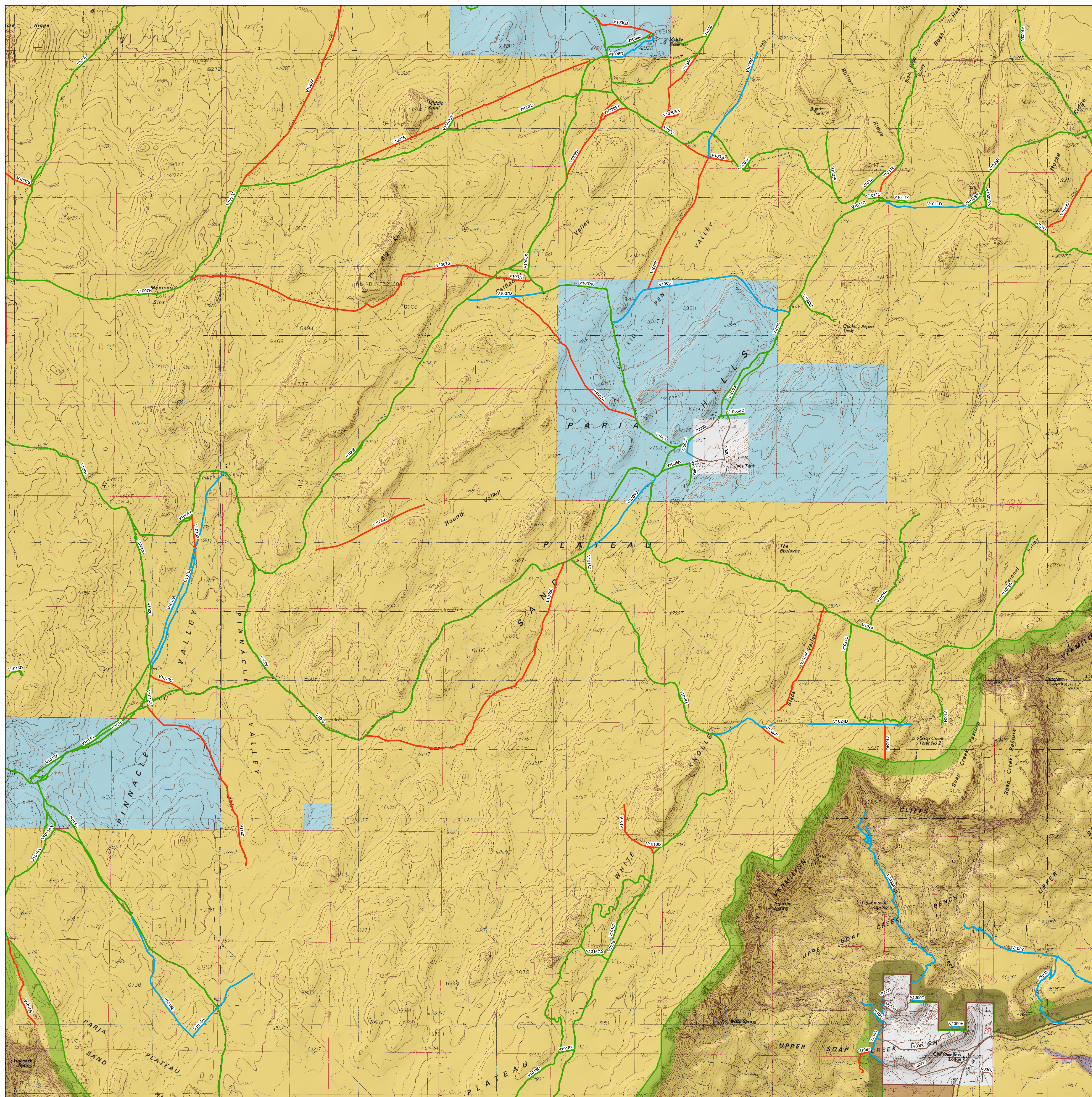
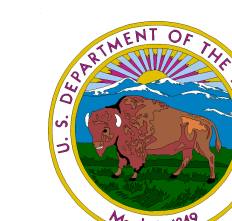


PROPOSED ROUTE DESIGNATIONS

LOCATION #: J2

Bureau of Land Management
Arizona Strip District Office
National Park Service
Lake Mead National Recreation Area



Legend

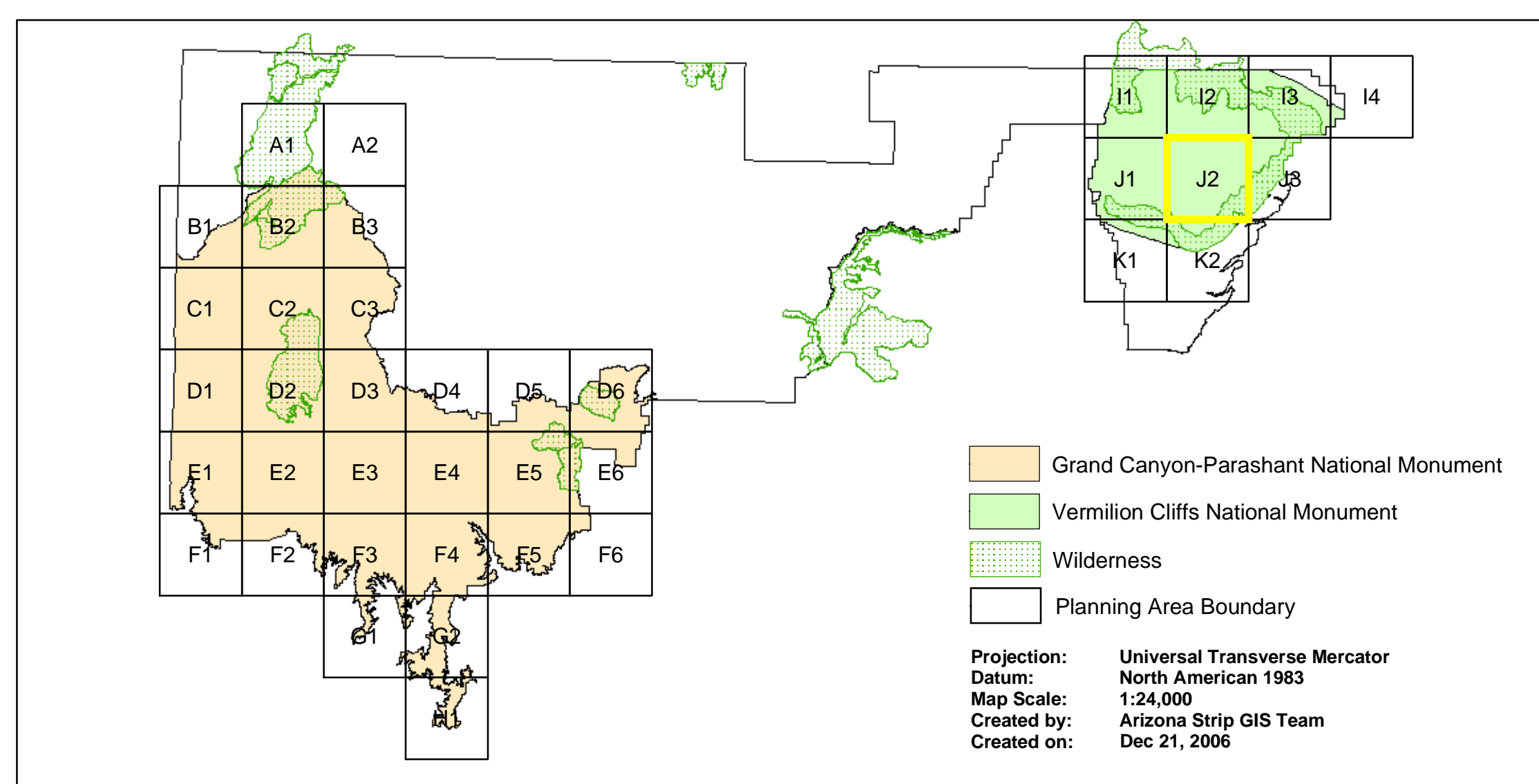
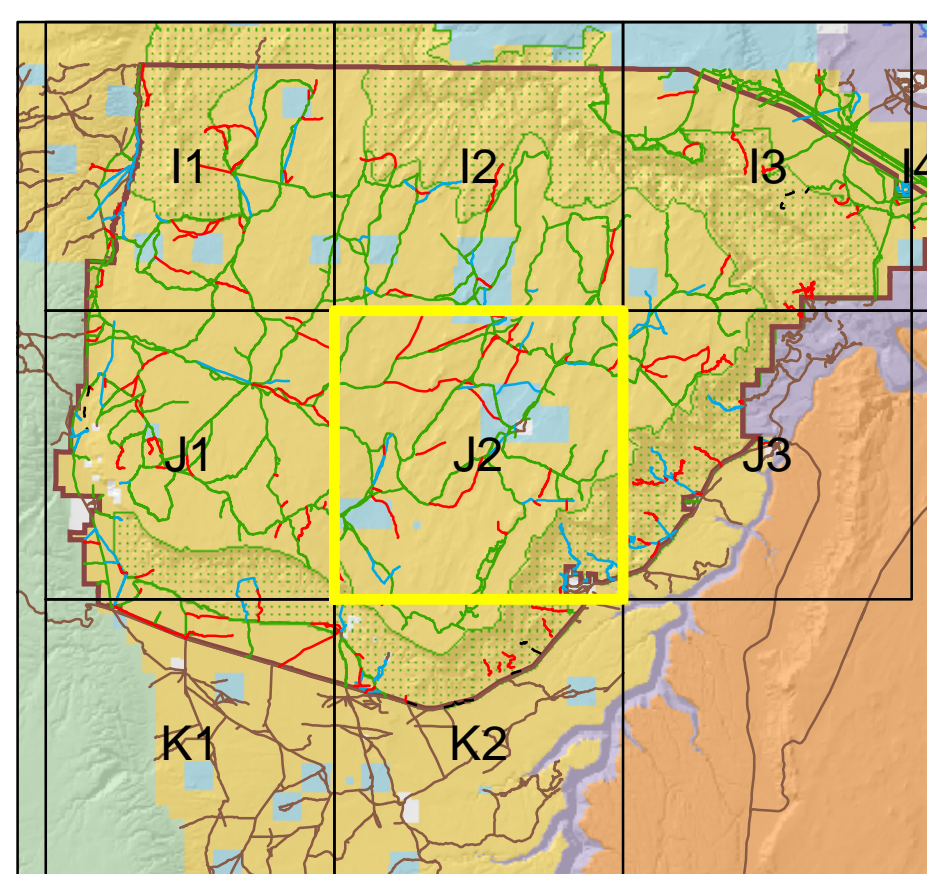
Proposed Route Designation

- Open to All Users (mitigating measures may apply)
- - - Open to All Users for ATV use only.
- Open to All Users with Seasonal Restrictions
- - - - - Open to All Users for Non-Motorized Uses; Mechanized use limits may vary
- Administrative Use Only (open to administrative motorized uses and non-motorized public uses; public mechanized use limits may vary)
- Closed to All Motorized Use and Mechanized Use (permanent closure as a route)
- Undesignated Routes (outside jurisdiction i.e. private and other federal land, or routes to be designated in future planning)

Land Status

- Bureau of Land Management
- Native American Reservation
- National Park Service
- National Recreation Area (NPS)
- Private
- State or Arizona
- Monument Boundary
- Wilderness Boundary

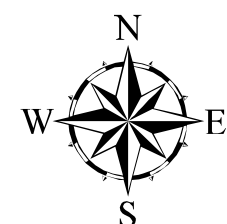
Note: Decisions in this document only apply to Bureau of Land Management (BLM) and National Park Service (NPS) lands in the Planning Area.



Not all routes are labeled. Many smaller routes were not labeled due to overlap problems. If you have questions on specific routes that you cannot answer by viewing these maps, you can either contact the BLM or review the GIS data.

This product may not meet BLM standards for accuracy and content. Different data sources and input scales may cause some misalignment of data layers.

1 0 1 2 Kilometers



1 0 1 2 Miles

Projection: Universal Transverse Mercator
Datum: North American 1983
Map Scale: 1:24,000
Created by: Arizona Strip GIS Team
Created on: Dec 21, 2006