



2004 Water Year SCHUYLKILL RIVER BASIN

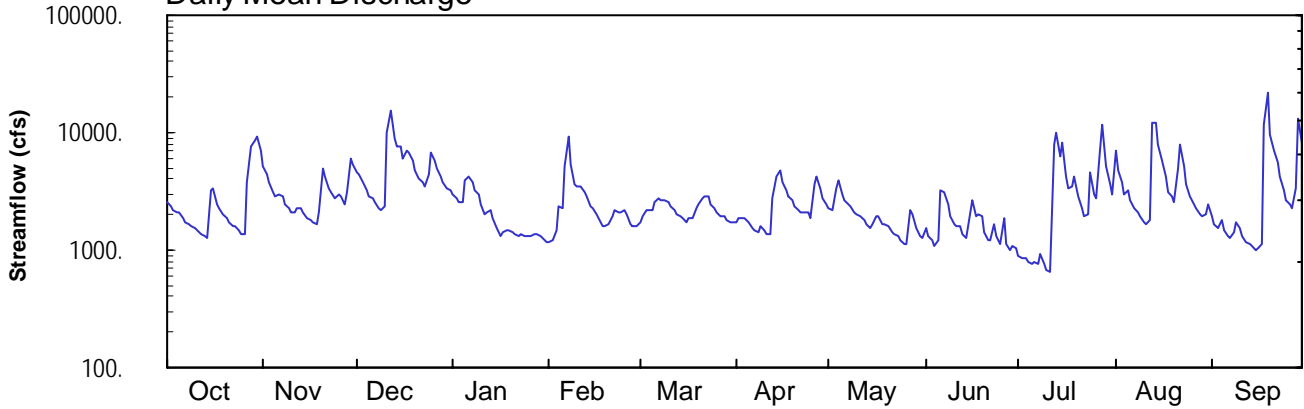
01472000 Schuylkill River at Pottstown, PA

Latitude: 40° 14' 30"
Montgomery County

Longitude: 075° 39' 07"
Datum: 117.86 feet

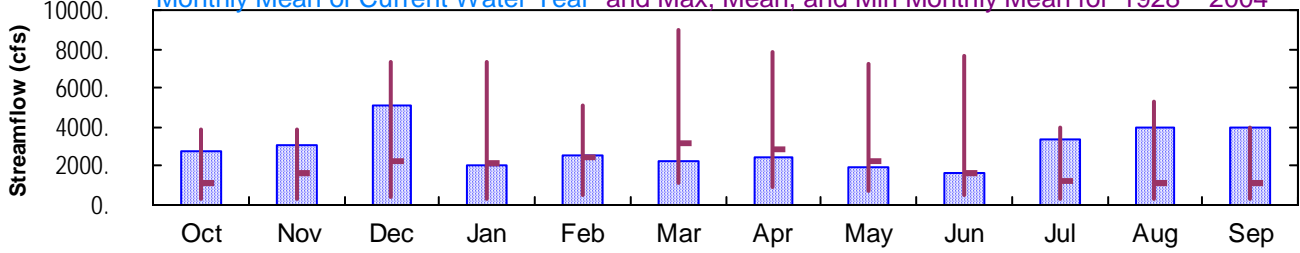
Hydrologic Unit Code: 02040203
Drainage Area: 1147. mi²

Daily Mean Discharge

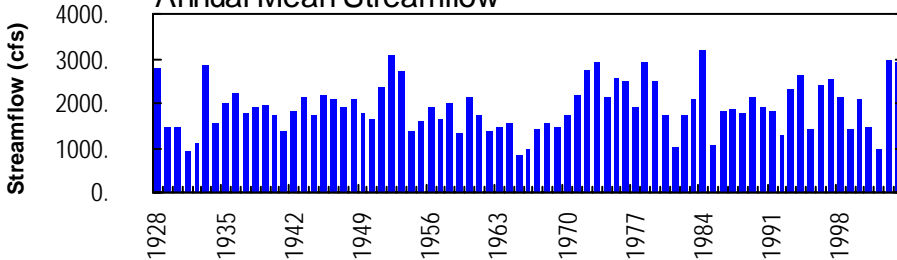


Monthly Statistics

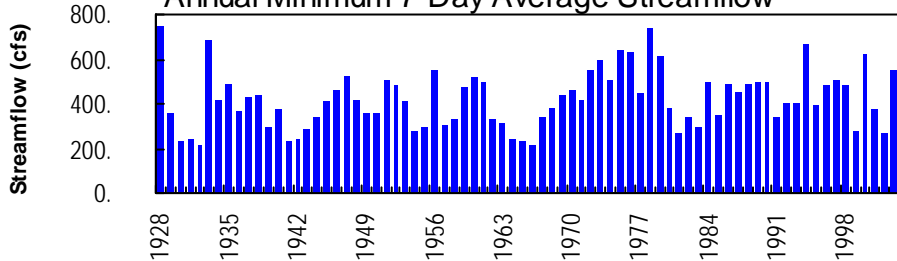
Monthly Mean of Current Water Year and Max, Mean, and Min Monthly Mean for 1928 – 2004



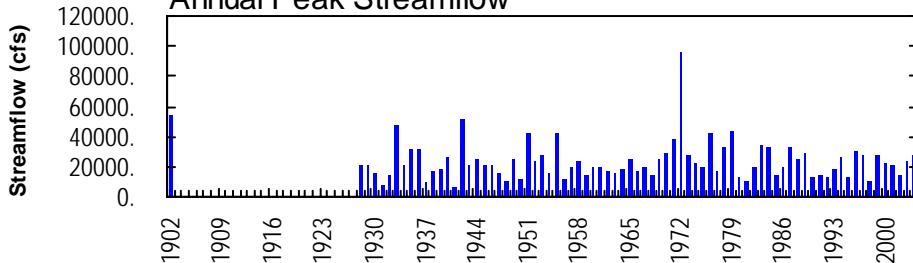
Annual Mean Streamflow



Annual Minimum 7-Day Average Streamflow



Annual Peak Streamflow



01472000-Schuylkill River at Pottstown

SCHUYLKILL RIVER BASIN

01472000 SCHUYLKILL RIVER AT POTTSTOWN, PA
(Pennsylvania Water-Quality Network Station)

LOCATION.--Lat 40°14'30", long 75°39'07", Montgomery County, Hydrologic Unit 02040203, on right bank 75 ft upstream from bridge on Hanover Street in Pottstown, and 0.3 mi downstream from Manatawny Creek.

DRAINAGE AREA.--1,147 mi².

WATER-DISCHARGE RECORDS

PERIOD OF RECORD.--October 1927 to current year.

GAGE.--Water-stage recorder and crest-stage gage. Datum of gage is 117.86 ft above National Geodetic Vertical Datum of 1929. October 1927 to Nov. 22, 1928, nonrecording gage, and Nov. 23, 1928, to Dec. 26, 1972, recording gage at site 100 ft downstream at same datum. Dec. 27, 1972, to May 10, 1974, nonrecording gage 1.0 mi downstream at datum 2.83 ft lower.

REMARKS.--Records good except those for estimated daily discharges, which are poor. Flow regulated by Blue Marsh Lake (station 01470870) since April 1979, by Still Creek Reservoir (station 01469200) since February 1933, and by Lake Ontelaunee. Satellite and landline telemetry at station.

EXTREMES OUTSIDE PERIOD OF RECORD.--Maximum stage known prior to October 1926, 21.0 ft, Feb. 28, 1902, from floodmarks, discharge, about 53,900 ft³/s.

DISCHARGE, CUBIC FEET PER SECOND, WATER YEAR OCTOBER 2003 TO SEPTEMBER 2004
DAILY MEAN VALUES

DAY	OCT	NOV	DEC	JAN	FEB	MAR	APR	MAY	JUN	JUL	AUG	SEP
1	2560	5200	4550	2950	e1180	1720	1700	2310	1550	896	7110	1920
2	2400	4380	4390	2770	e1200	1920	1830	2200	1320	861	4770	1640
3	2210	3800	3840	2580	1460	2170	1860	3410	1200	843	3730	1520
4	2060	3050	3270	2570	2350	2160	1890	3930	1080	788	3000	1810
5	2120	2850	2890	3850	2270	2200	1760	3020	1190	770	3190	1460
6	1900	3030	2730	4270	5180	2500	1550	2650	3240	785	2670	1330
7	1740	2840	2520	3720	9130	2720	1450	2420	3120	769	2270	1290
8	1650	2500	2310	3210	5360	2620	1440	2370	2490	934	2080	1410
9	1570	2260	2180	3020	3570	2690	1600	2100	1950	756	1940	1720
10	1520	2130	2330	e2500	3450	2500	1500	2050	1680	679	1750	1560
11	1430	2070	9810	e2000	3430	2330	1390	1920	1620	639	1630	1340
12	1360	2250	15200	e2100	3080	2170	1390	1800	1580	7810	1820	1180
13	1300	2260	8880	e2200	2840	2050	2740	1650	1350	9990	12200	1110
14	1280	2070	7540	e1850	2400	1950	4170	1560	1250	6140	12000	1070
15	3240	1860	7600	e1550	2240	1880	4850	1640	1610	8140	7960	1010
16	3340	1790	6120	e1300	2030	1750	3790	1970	2700	4320	5770	1030
17	2410	1740	7140	e1400	1870	1840	3220	1970	1960	3300	4200	1110
18	2240	1690	6790	e1450	1600	1860	2890	1660	1980	3440	3040	11700
19	2010	2120	5680	e1500	1590	2280	2620	1690	1910	4210	2820	21500
20	1830	4880	4690	e1400	1690	2440	2350	1590	1410	2830	2590	9690
21	1720	4300	4110	e1350	1920	2740	2220	1440	1230	2240	4930	6980
22	1620	3410	3720	e1300	2190	2860	2130	1390	1190	1970	7940	5540
23	1570	3050	3490	e1350	2100	2840	2070	1320	1650	2020	5160	4230
24	1460	2800	4360	e1300	2100	2440	2090	1230	1320	4570	3640	3210
25	1390	3030	6830	e1320	2170	2300	1870	1110	1140	3010	2910	2660
26	1350	2880	5770	e1340	1990	2070	3660	1120	1850	2740	2450	2440
27	3770	2440	4880	e1360	1670	1980	4250	2220	1140	7000	2230	2240
28	7550	3070	4260	e1380	1600	1920	3400	2010	992	11500	2060	3320
29	8510	5980	3800	e1300	1620	1790	2720	1540	1080	5080	1970	13300
30	9150	5350	3370	e1250	---	1700	2460	1290	1030	3640	2020	8240
31	6910	---	3180	e1150	---	1700	---	1270	---	2940	2440	---
TOTAL	85170	91080	158230	62590	75280	68090	72860	59850	48812	105610	124290	118560
MEAN	2747	3036	5104	2019	2596	2196	2429	1931	1627	3407	4009	3952
MAX	9150	5980	15200	4270	9130	2860	4850	3930	3240	11500	12200	21500
MIN	1280	1690	2180	1150	1180	1700	1390	1110	992	639	1630	1010

STATISTICS OF MONTHLY MEAN DATA FOR WATER YEARS 1928 - 2004, BY WATER YEAR (WY)

MEAN	1161	1674	2208	2182	2422	3180	2907	2261	1621	1275	1072	1125
MAX	3870	3897	7359	7383	5117	8948	7820	7220	7634	3940	5290	3952
(WY)	1977	1951	1997	1979	1971	1936	1983	1989	1972	1984	1933	2004
MIN	258	309	419	316	540	1101	875	729	462	302	301	256
(WY)	1931	1931	1931	1981	1934	1981	1985	1965	1965	1966	1966	1932

e Estimated.

SCHUYLKILL RIVER BASIN

01472000 SCHUYLKILL RIVER AT POTTSTOWN, PA--Continued

SUMMARY STATISTICS	FOR 2003 CALENDAR YEAR		FOR 2004 WATER YEAR		WATER YEARS 1928 - 2004	
ANNUAL TOTAL	1177450		1070422			
ANNUAL MEAN	3226		2925		1921	
HIGHEST ANNUAL MEAN					3211	1984
LOWEST ANNUAL MEAN					843	1965
HIGHEST DAILY MEAN	19700	Jun 21	21500	Sep 19	71200	Jun 23 1972
LOWEST DAILY MEAN	e600	Feb 17	639	Jul 11	175	Sep 19 1932
ANNUAL SEVEN-DAY MINIMUM	a714	Feb 13	762	Jul 5	210	Sep 19 1932
MAXIMUM PEAK FLOW			27800	Sep 19	b95900	Jun 23 1972
MAXIMUM PEAK STAGE			14.59	Sep 19	c29.97	Jun 23 1972
10 PERCENT EXCEEDS	6310		5410		3870	
50 PERCENT EXCEEDS	2500		2180		1310	
90 PERCENT EXCEEDS	1120		1280		477	

- a** Computed using estimated daily discharges.
- b** From rating curve extended above 50,400 ft³/s.
- c** From floodmark.
- e** Estimated.

SCHUYLKILL RIVER BASIN

01472000 SCHUYLKILL RIVER AT POTTSTOWN, PA--Continued
(Pennsylvania Water-Quality Network Station)

WATER-QUALITY RECORDS

PERIOD OF RECORD.--April 2002 to current year.

COOPERATION.--Samples were collected as part of the Pennsylvania Department of Environmental Protection Water-Quality Network (WQN) with cooperation from the Pennsylvania Department of Environmental Protection.

WATER-QUALITY DATA, WATER YEAR OCTOBER 2003 TO SEPTEMBER 2004

Date	Time	Agency collecting sample, code (00027)	Agency analyzing sample, code (00028)	Instantaneous discharge, cfs (00061)	Dissolved oxygen, mg/L (00300)	pH, water, unfltrd field, std units (00400)	pH, water, unfltrd lab, std units (00403)	Specif. conductance, wat unfltrd lab, µS/cm 25 degC (90095)	Specif. conductance, wat unfltrd lab, µS/cm 25 degC (00095)	Temperature, water, deg C (00010)	Hardness, water, mg/L as CaCO3 (00900)	Calcium water unfltrd recover -able, mg/L (00916)	Magnesium, water, unfltrd recover -able, mg/L (00927)
OCT 2003													
02...	1445	1028	9813	2390	11.5	7.7	7.6	306	312	14.7	120	31.7	10.9
DEC 02...	1000	1028	9813	4420	11.9	7.8	7.8	268	275	6.3	110	28.9	9.1
FEB 2004													
19...	1140	1028	9813	1580	14.4	7.9	7.9	382	378	3.9	140	35.6	13.4
APR 28...	0940	1028	9813	3430	10.2	7.8	7.7	298	297	12.2	110	30.2	8.6
JUN 16...	1140	1028	9813	2730	7.2	7.4	7.4	241	278	21.8	91	22.3	8.7
AUG 12...	0900	1028	9813	1650	7.8	7.6	7.7	377	369	21.4	140	35.6	12.5

Date	ANC, wat unfltrd fixed end pt, lab, mg/L as CaCO3 (00417)	Fluoride, water, unfltrd mg/L (00951)	Sulfate, water, fltrd, mg/L (00945)	Residue on evap. at 105degC wat flt mg/L (00515)	Residue total at 105 deg. C, suspended, mg/L (00530)	Ammonia water, unfltrd mg/L as N (00610)	Nitrate water, unfltrd mg/L as N (00620)	Nitrite water, unfltrd mg/L as N (00615)	Ortho-phosphate, water, unfltrd mg/L as P (70507)	Phosphorus, water, unfltrd mg/L (00665)	Total nitrogen, water, unfltrd mg/L (00600)	Organic carbon, water, unfltrd mg/L (00680)	Aluminum, water, unfltrd recover -able, µg/L (01105)
OCT 2003													
02...	72	<.2	41.3	214	4	.030	3.11	<.040	.05	.077	--	2.4	<200
DEC 02...	67	<.2	31.0	194	<2	.060	3.47	<.040	.04	.066	3.9	1.9	200
FEB 2004													
19...	81	<.2	46.8	268	<2	.220	3.69	.040	.08	.088	4.3	1.9	<200
APR 28...	66	<.2	33.9	222	14	.080	2.70	.050	.04	.085	3.3	2.7	300
JUN 16...	53	<.2	27.4	228	134	.100	2.13	.050	.09	.298	3.3	5.4	4300
AUG 12...	87	<.2	44.4	268	4	<.020	2.98	<.040	.08	.101	3.2	2.8	200

Date	Copper, water, unfltrd recover -able, µg/L (01042)	Cyanide amenable to chlorination wat unfltrd mg/L (00722)	Iron, water, unfltrd recover -able, µg/L (01045)	Lead, water, unfltrd recover -able, µg/L (01051)	Manganese, water, unfltrd recover -able, µg/L (01055)	Nickel, water, unfltrd recover -able, µg/L (01067)	Zinc, water, unfltrd recover -able, µg/L (01092)	Phenolic compounds, water, unfltrd µg/L (32730)	Gross alpha radioac water unfltrd pCi/L (01519)	Gross beta radioac water unfltrd pCi/L (85817)	Tritium water unfltrd pCi/L (07000)
OCT 2003											
02...	<10	<1.00	240	<1.0	60	<50	<10	<5	.40	3	20
DEC 02...	<10	<1.00	360	<1.0	90	<50	10	<5	.33	2	22
FEB 2004											
19...	<10	<1.00	220	<1.0	160	<50	20	<5	.05	2	63
APR 28...	<10	<1.00	580	2.0	120	<50	10	8	--	2	--
JUN 16...	10	<1.00	5970	10	320	<50	100	<5	.78	4	40
AUG 12...	<10	<1.00	300	1.0	60	<50	80	<5	.71	2	106

SCHUYLKILL RIVER BASIN

01472000 SCHUYLKILL RIVER AT POTTSTOWN, PA--Continued

BIOLOGICAL DATA
BENTHIC MACROINVERTEBRATES

REMARKS.--Samples were collected using a D-Frame net with a mesh size of 500 µm. Samples represent counts per 100 (approximate) subsamples.

Date	09/09/03	
Benthic Macroinvertebrate	Count	
Platyhelminthes		
Turbellaria (FLATWORMS)		
Tricladida		
Planariidae	3	
Mollusca		
Bivalvia (CLAMS)		
Veneroidea		
Sphaeriidae		
<i>Sphaerium</i>	4	
Annelida		
Oligochaeta (AQUATIC EARTHWORMS)		
Lumbriculida		
Lumbriculidae	3	
Arthropoda		
Insecta		
Ephemeroptera (MAYFLIES)		
Baetidae		
<i>Acentrella</i>	22	
<i>Baetis</i>	17	
Ephemerellidae	1	
Heptageniidae		
<i>Stenonema</i>	4	
Plecoptera (STONEFLIES)		
Perlidae		
<i>Agnatina</i>	1	
Trichoptera (CADDISFLIES)		
Hydropsychidae		
<i>Cheumatopsyche</i>	20	
<i>Hydropsyche</i>	28	
Coleoptera (BEETLES)		
Elmidae (RIFFLE BEETLES)		
<i>Stenelmis</i>	52	
Psephenidae (WATER PENNIES)		
<i>Psephenus</i>	2	
Diptera (TRUE FLIES)		
Chironomidae (MIDGES)		
Empididae (DANCE FLIES)		
<i>Hemerodromia</i>	1	
Simuliidae (BLACK FLIES)		
<i>Simulium</i>	10	
Total Organisms		180
Total Taxa		15

SCHUYLKILL RIVER BASIN

01472000 SCHUYLKILL RIVER AT POTTSTOWN, PA--Continued

BIOLOGICAL DATA
BENTHIC MACROINVERTEBRATES

REMARKS.--Samples were collected using a D-Frame net with a mesh size of 500 µm. Samples represent counts per 100 (approximate) subsamples.

Date	09/09/03	
Benthic Macroinvertebrate	Count	
Platyhelminthes		
Turbellaria (FLATWORMS)		
Tricladida		
Planariidae	3	
Mollusca		
Bivalvia (CLAMS)		
Veneroida		
Sphaeriidae		
<i>Sphaerium</i>	4	
Annelida		
Oligochaeta (AQUATIC EARTHWORMS)		
Lumbriculida		
Lumbriculidae	3	
Arthropoda		
Insecta		
Ephemeroptera (MAYFLIES)		
Baetidae		
<i>Acentrella</i>	22	
<i>Baetis</i>	17	
Ephemerellidae	1	
Heptageniidae		
<i>Stenonema</i>	4	
Plecoptera (STONEFLIES)		
Perlidae		
<i>Agnatina</i>	1	
Trichoptera (CADDISFLIES)		
Hydropsychidae		
<i>Cheumatopsyche</i>	20	
<i>Hydropsyche</i>	28	
Coleoptera (BEETLES)		
Elmidae (RIFFLE BEETLES)		
<i>Stenelmis</i>	52	
Psephenidae (WATER PENNIES)		
<i>Psephenus</i>	2	
Diptera (TRUE FLIES)		
Chironomidae (MIDGES)		
Empididae (DANCE FLIES)		
<i>Hemerodromia</i>	1	
Simuliidae (BLACK FLIES)		
<i>Simulium</i>	10	
Total Organisms		180
Total Taxa		15

SCHUYLKILL RIVER BASIN

01472000 SCHUYLKILL RIVER AT POTTSTOWN, PA--Continued

BIOLOGICAL DATA
BENTHIC MACROINVERTEBRATES

REMARKS.--Samples were collected using a D-Frame net with a mesh size of 500 µm. Samples represent counts per 100 (approximate) subsamples.

Date	09/09/03	
Benthic Macroinvertebrate	Count	
Platyhelminthes		
Turbellaria (FLATWORMS)		
Tricladida		
Planariidae	3	
Mollusca		
Bivalvia (CLAMS)		
Veneroidea		
Sphaeriidae		
<i>Sphaerium</i>	4	
Annelida		
Oligochaeta (AQUATIC EARTHWORMS)		
Lumbriculida		
Lumbriculidae	3	
Arthropoda		
Insecta		
Ephemeroptera (MAYFLIES)		
Baetidae		
<i>Acentrella</i>	22	
<i>Baetis</i>	17	
Ephemerellidae	1	
Heptageniidae		
<i>Stenonema</i>	4	
Plecoptera (STONEFLIES)		
Perlidae		
<i>Agnatina</i>	1	
Trichoptera (CADDISFLIES)		
Hydropsychidae		
<i>Cheumatopsyche</i>	20	
<i>Hydropsyche</i>	28	
Coleoptera (BEETLES)		
Elmidae (RIFFLE BEETLES)		
<i>Stenelmis</i>	52	
Psephenidae (WATER PENNIES)		
<i>Psephenus</i>	2	
Diptera (TRUE FLIES)		
Chironomidae (MIDGES)		
Empididae (DANCE FLIES)		
<i>Hemerodromia</i>	1	
Simuliidae (BLACK FLIES)		
<i>Simulium</i>	10	
Total Organisms		180
Total Taxa		15