

RNAV (GPS) RWY 4

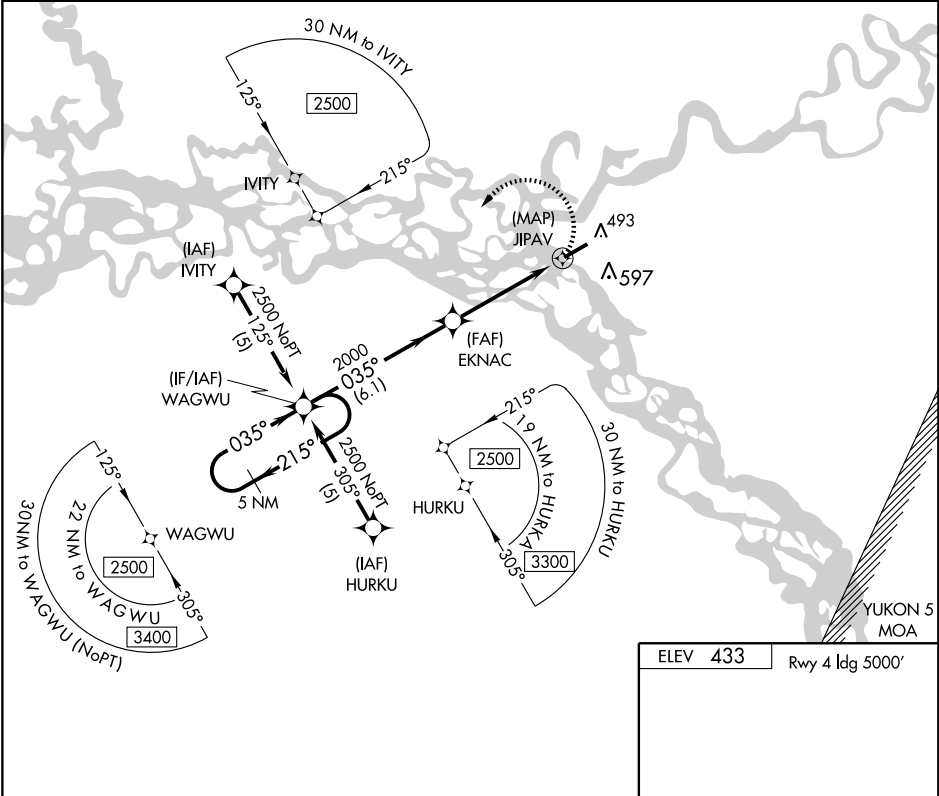
FORT YUKON (FYU) (PFYU)

APP CRS	Rwy ldg	5000
035°	TDZE	433
	Apt Elev	433

▼ Circling NA south of Rwy 4-22. DME/DME RNP-0.3 NA. Visibility reduction by helicopters NA.

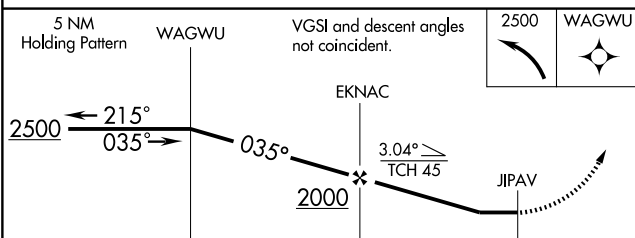
MISSED APPROACH: Climbing left turn to 2500 direct WAGWU and hold.

AWOS-3 125.8	ANCHORAGE CENTER 135.0 381.6	FAIRBANKS RADIO 122.1	CTAF 122.5
------------------------	--	---------------------------------	----------------------



AK, 10 MAY 2007 to 07 JUN 2007

AK, 10 MAY 2007 to 07 JUN 2007



ELEV 433	Rwy 4 ldg 5000'
----------	-----------------

Runway layout diagram showing the runway width of 5810 x 150 feet. The TDZE is 433 feet. Various altitudes are marked: 477±, 546, 550±, and 584. The approach path is shown as 035° to JIPAV.

CATEGORY	A	B	C	D
LNNAV MDA	860-1	427 (500-1)	860-1¼ 427 (500-1¼)	860-1½ 427 (500-1½)
CIRCLING	860-1 427 (500-1)	900-1 467 (500-1)	900-1½ 467 (500-1½)	1000-2 567 (600-2)