

Figure 1: ICD Single Channel Block Diagram Schematic

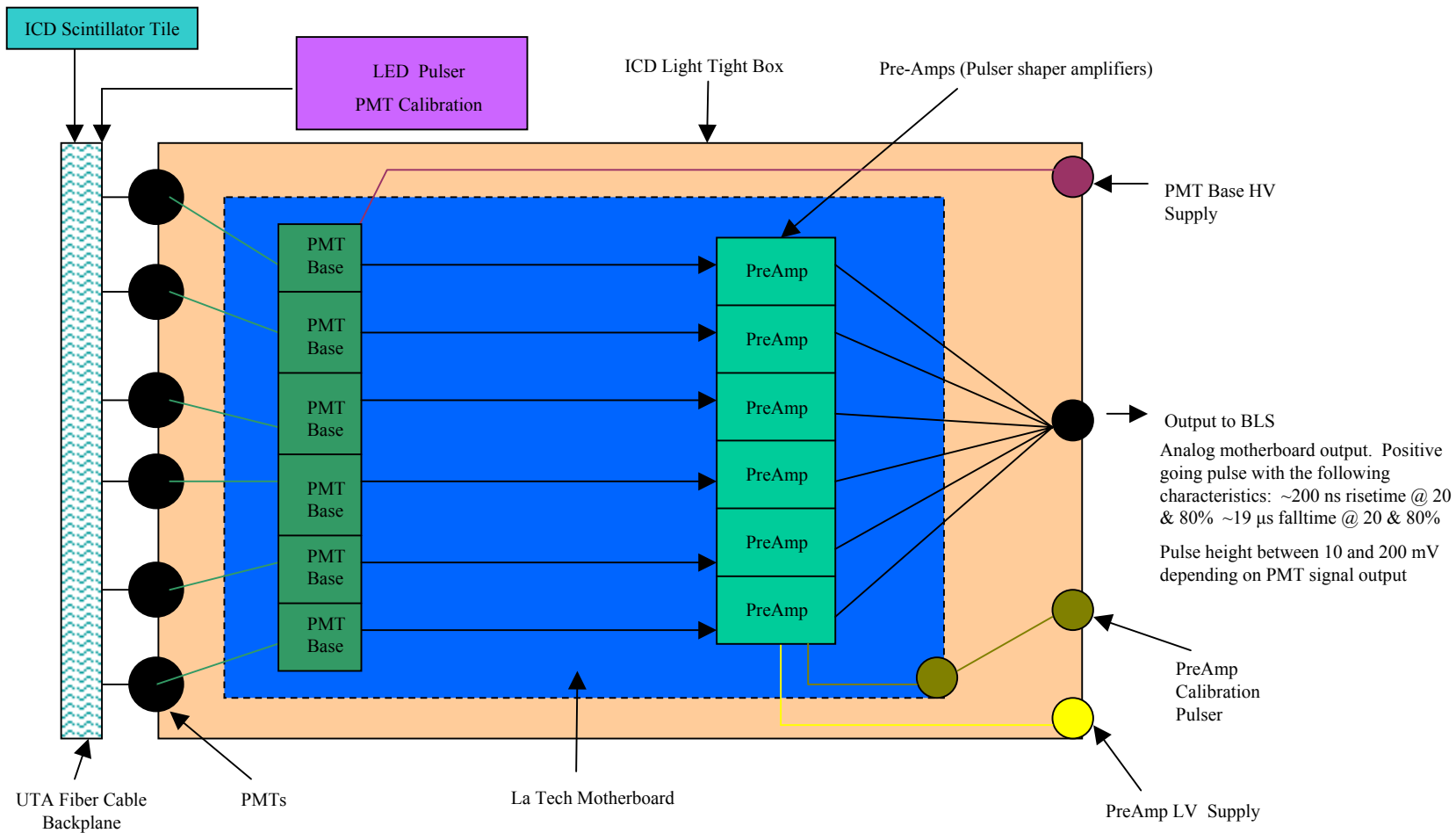


Figure 2: La Tech ICD Motherboard

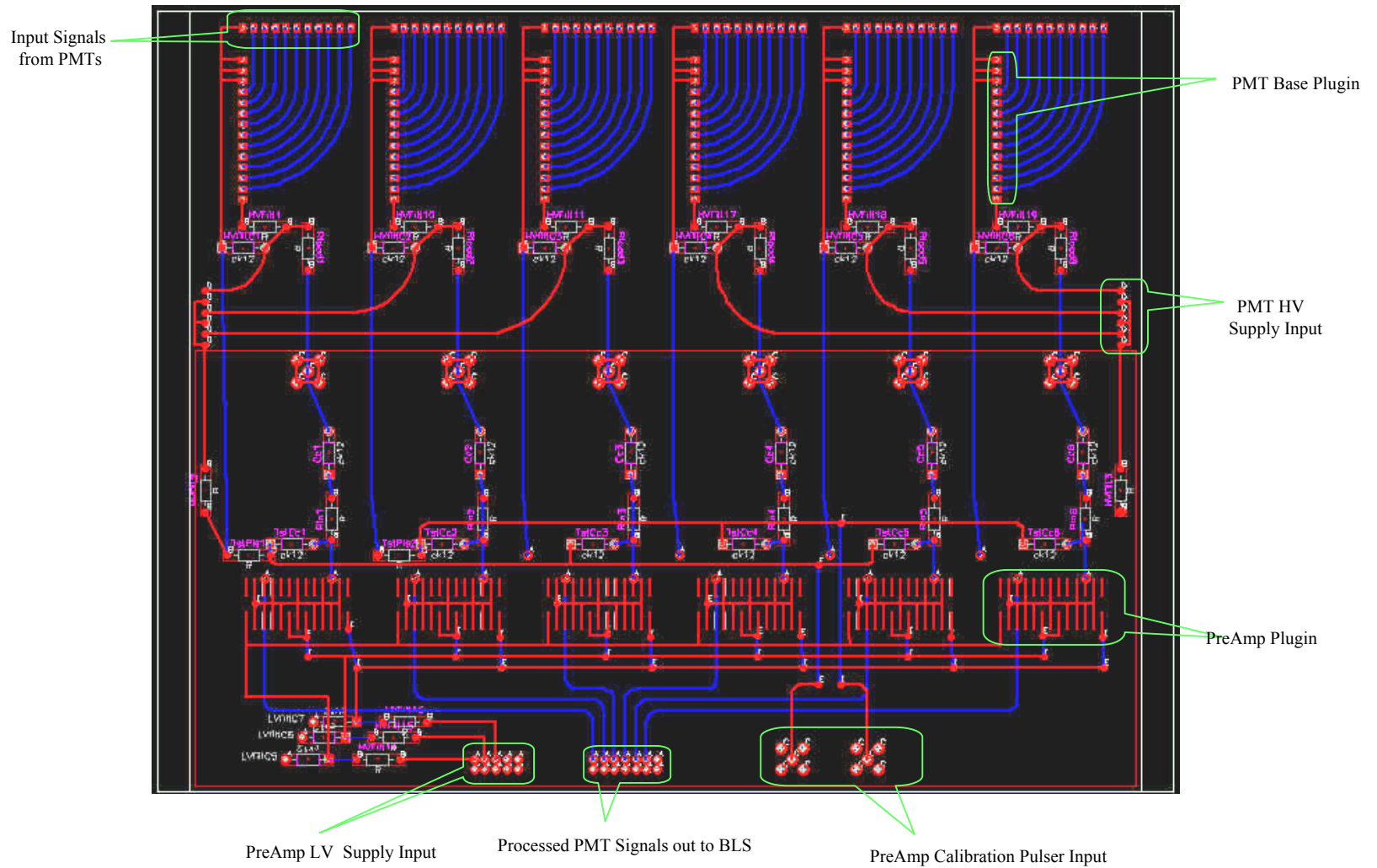


Figure 2a: Picture of the production ICD Motherboard with inputs and outputs marked

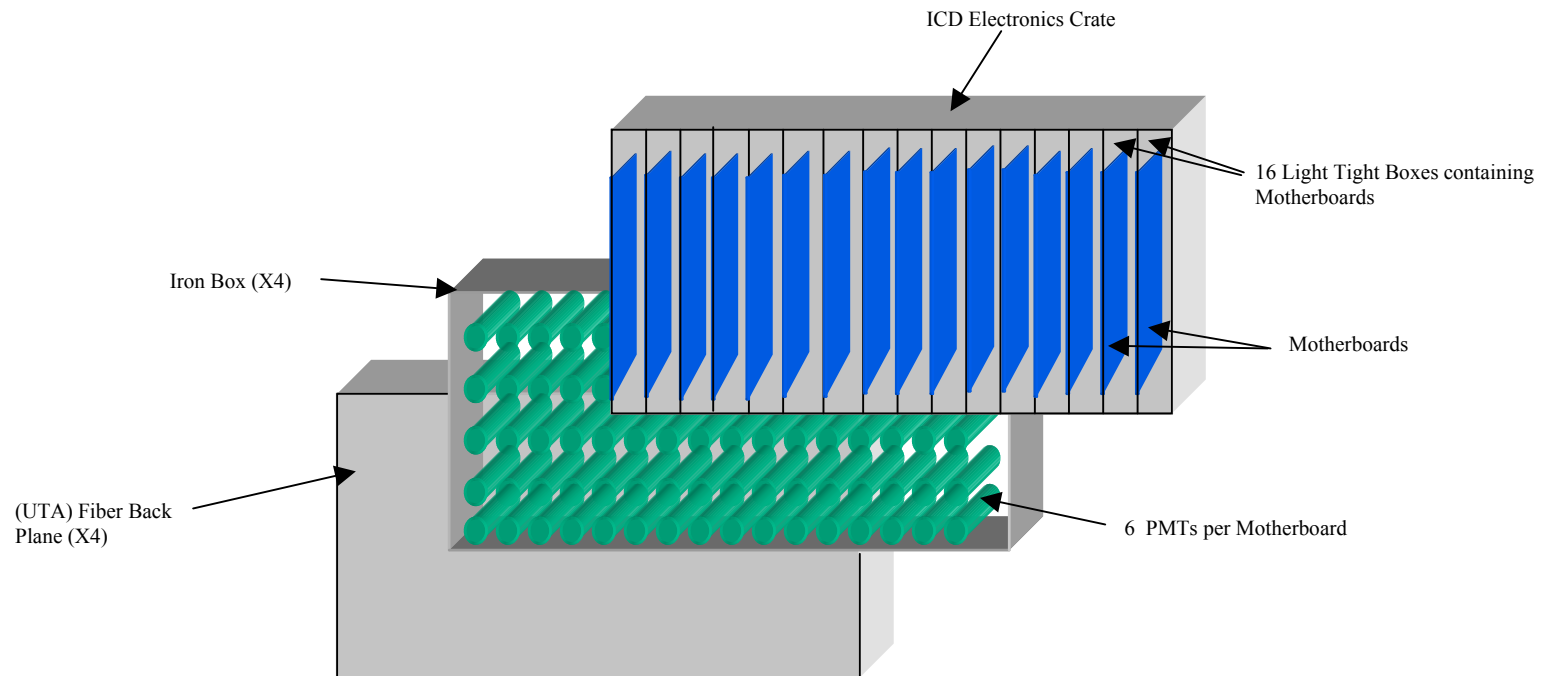


Figure 3: Layout of ICD Crate Electronics and Motherboard

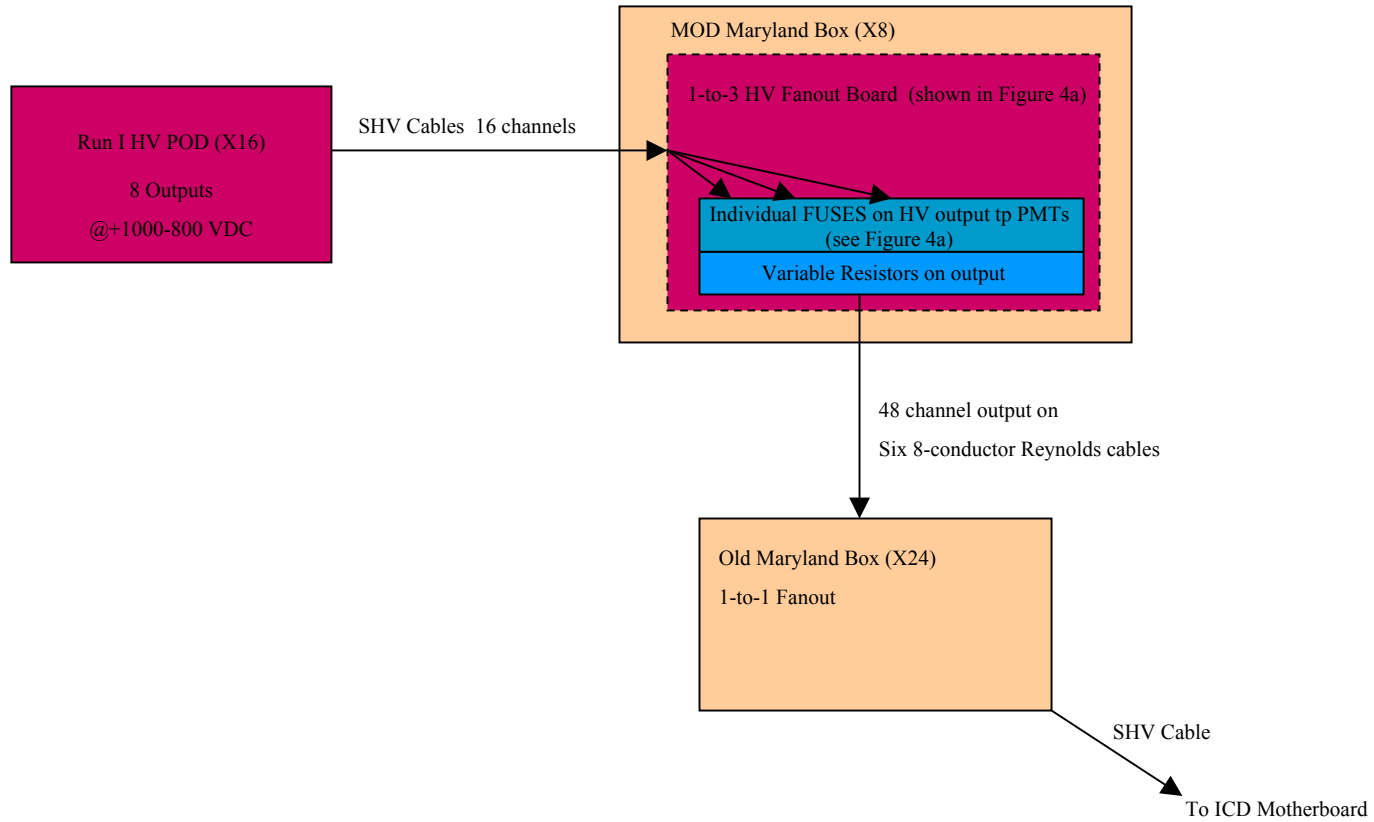


Figure 4: High Voltage Supply Block Diagram

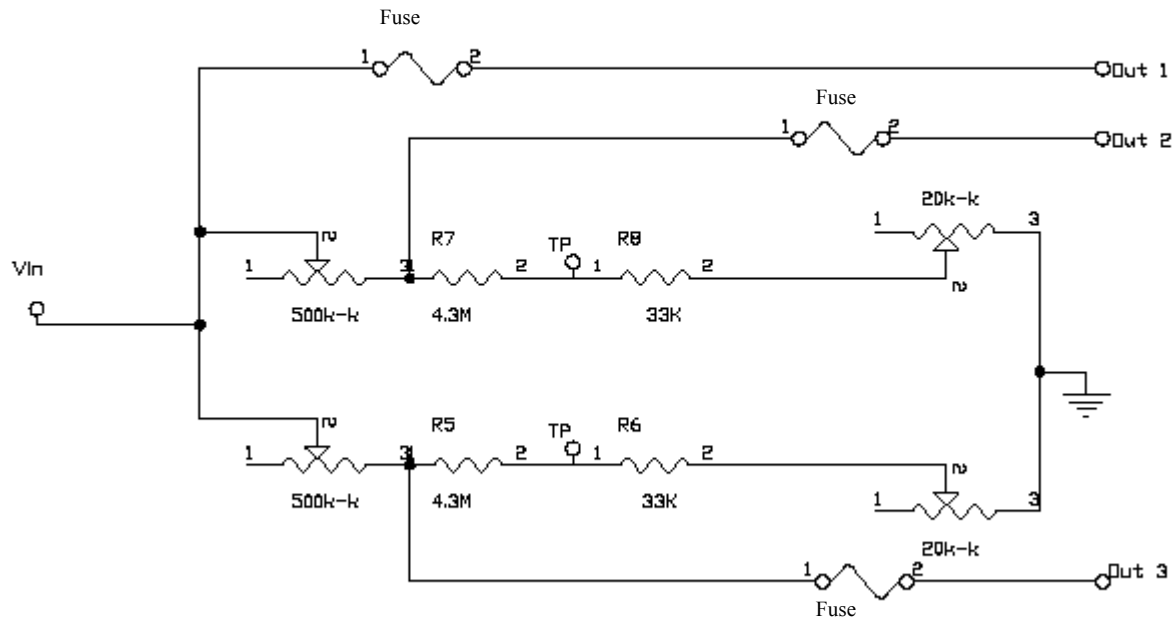


Figure 4a: Circuit Diagram for the High Voltage Fanout Board

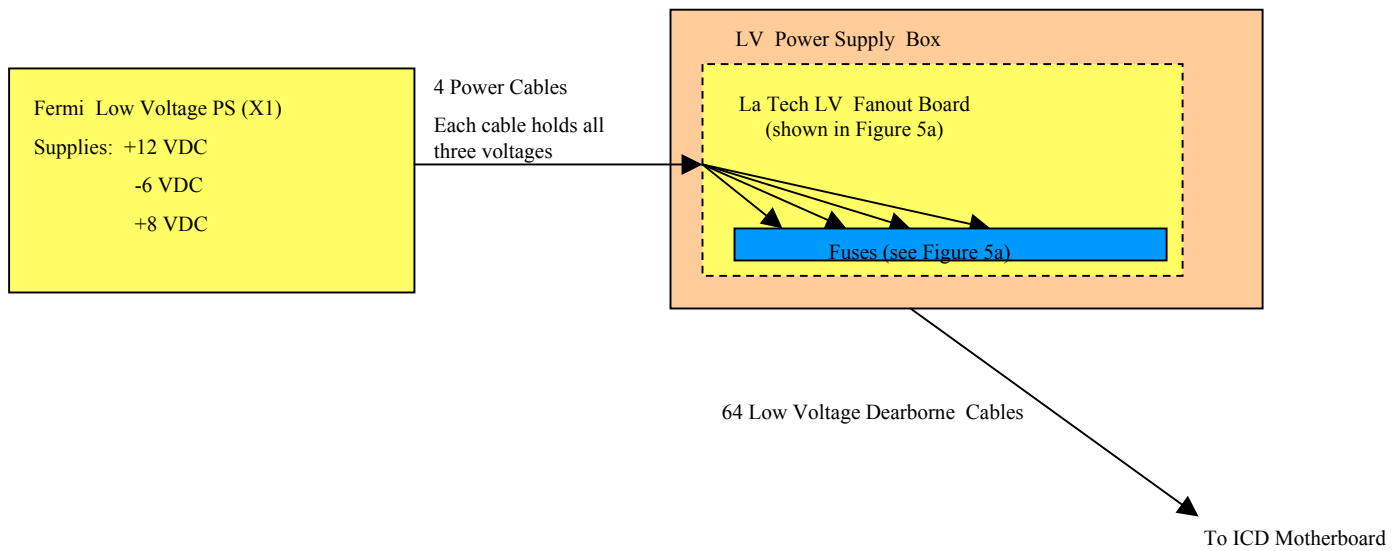


Figure 5: Low Voltage Power Supply Block Diagram

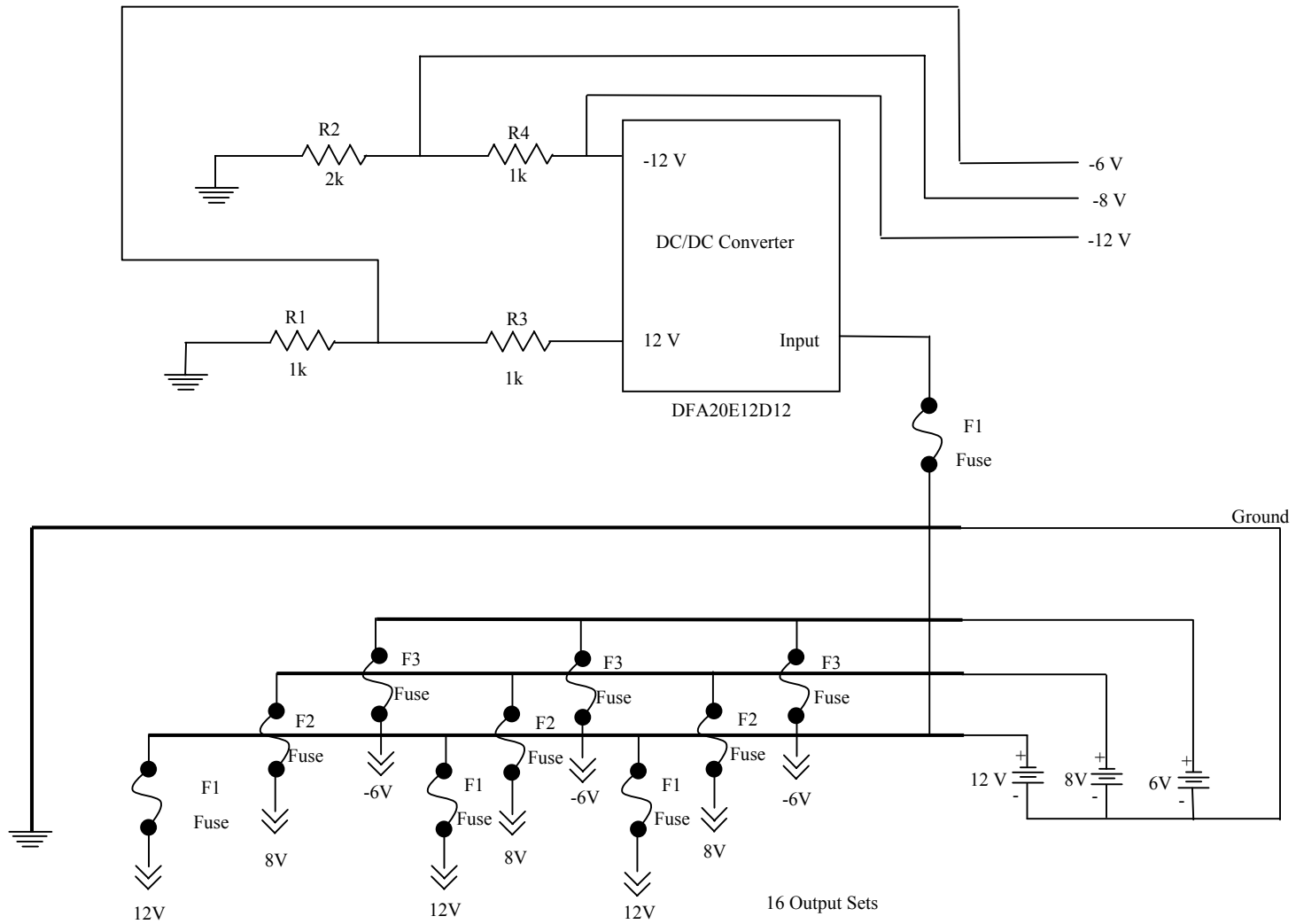


Figure 5a: Circuit Diagram for the Low Voltage Fanout Board

12 channels, each limited to 2.5 V maximum output. X4 opamp and resistively added for a 10 V max output. 2 delay lines of 8 20ns steps and 16 2ns steps.

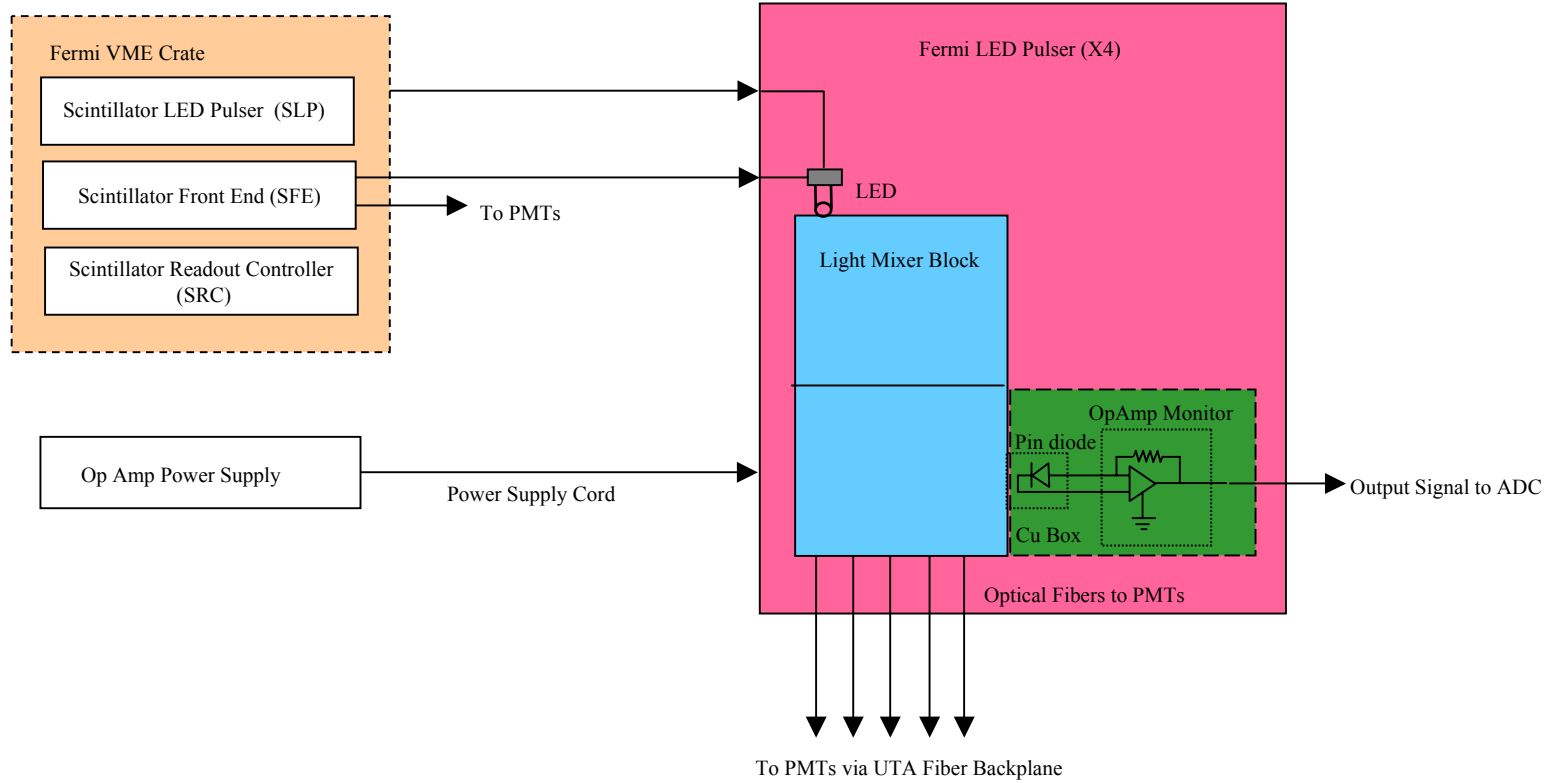


Figure 6: PMT LED Calibration Pulser Diagram

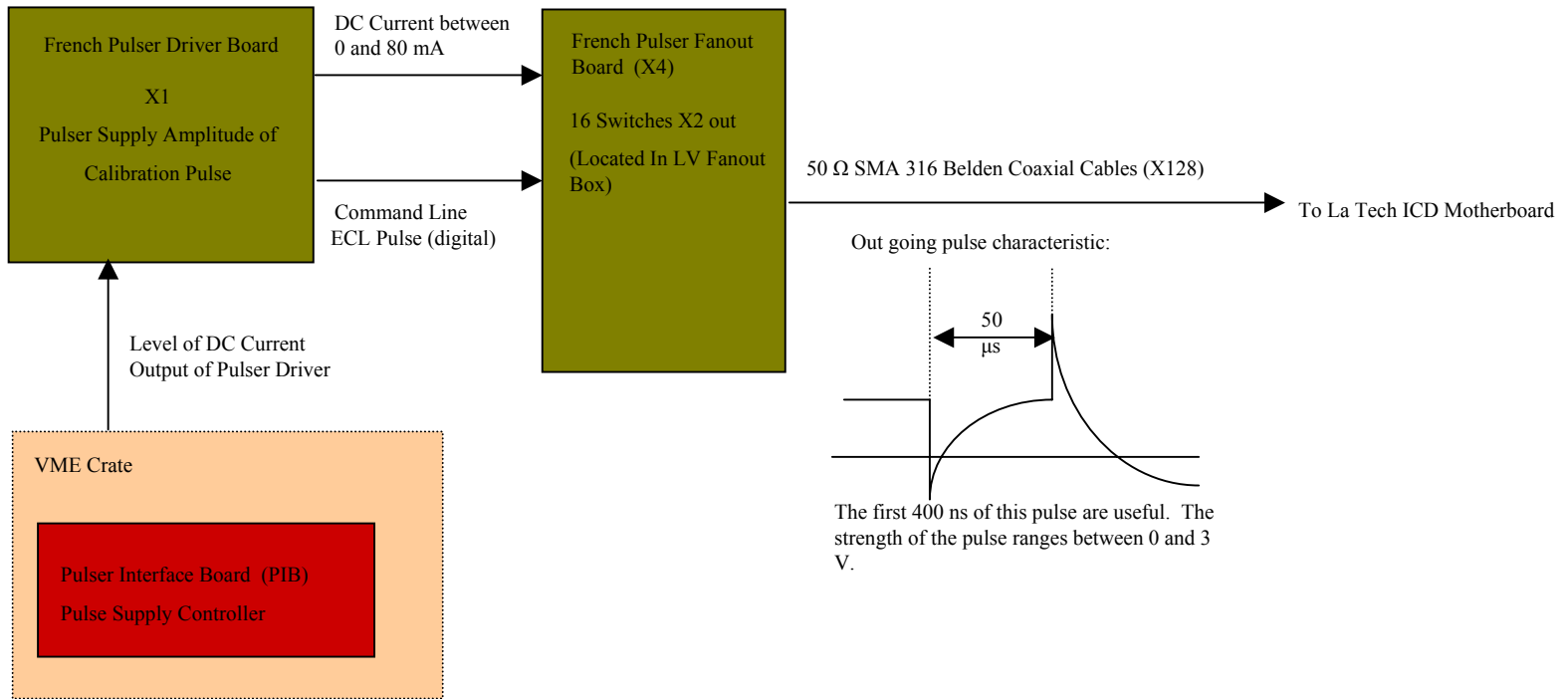


Figure 7: PreAmp Calibration Pulser Diagram

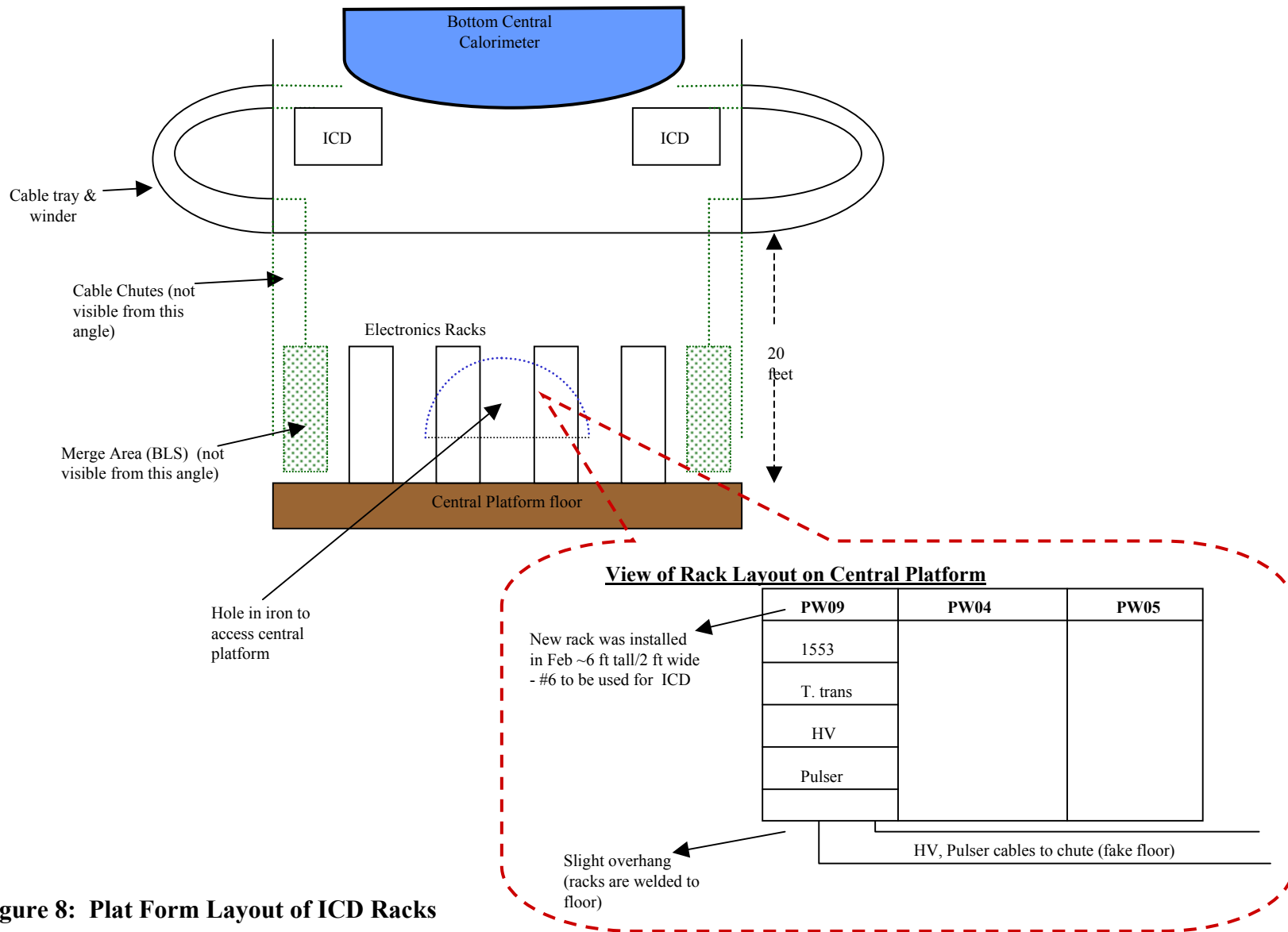


Figure 8: Plat Form Layout of ICD Racks

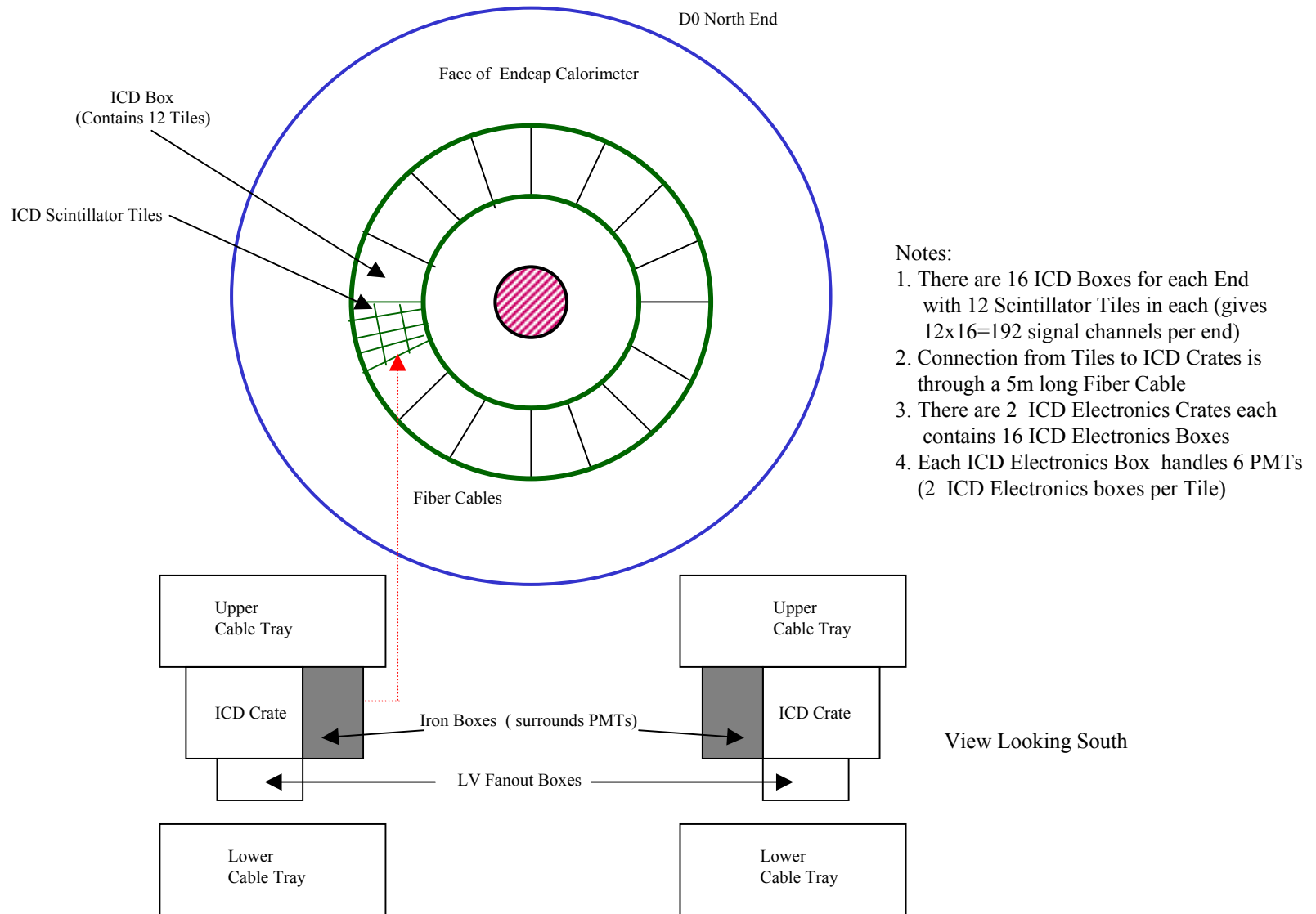


Figure 9: Inner Cryostat Detector System - ICD

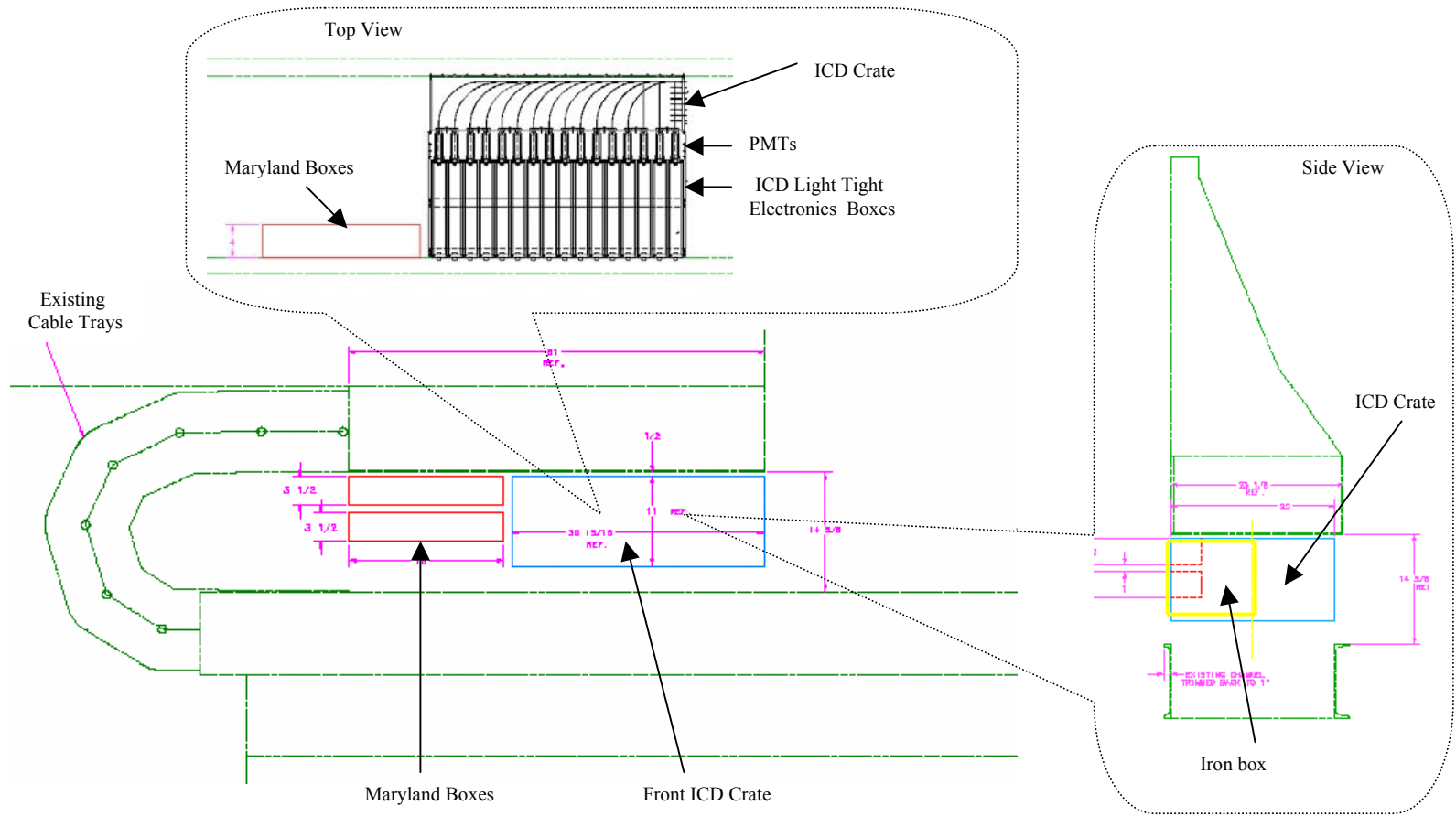


Figure 10: Expanded view of ICD Layout with dimensions.