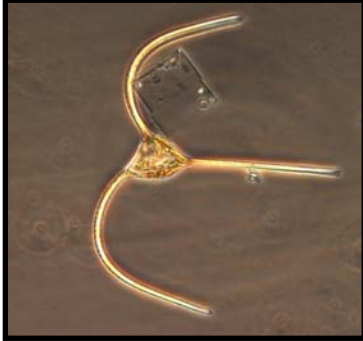


SEPMN SPECIES LIST

These are microscope pictures for the species on the SEPMN Data Sheet.

DINOFLAGELLATES

Ceratium longipes



Ceratium fusus



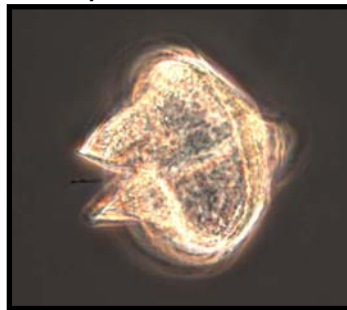
Ceratium furca



Dinophysis caudata



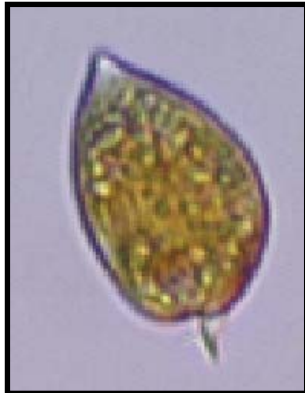
Protoperidinium



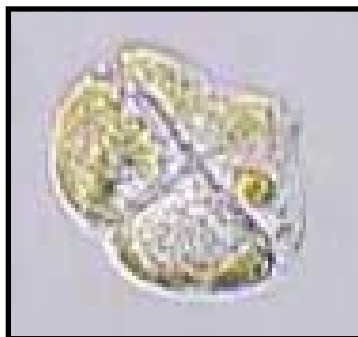
Akashiwo sanguinea



Prorocentrum micans



Karenia brevis

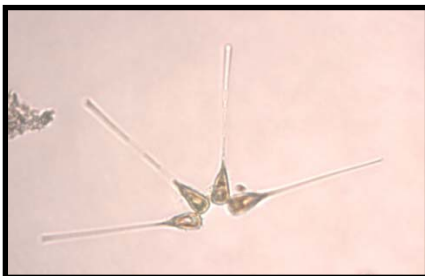


Prorocentrum lima



DIATOMS

Asterionella



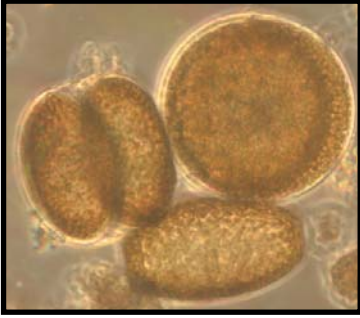
Bacillaria



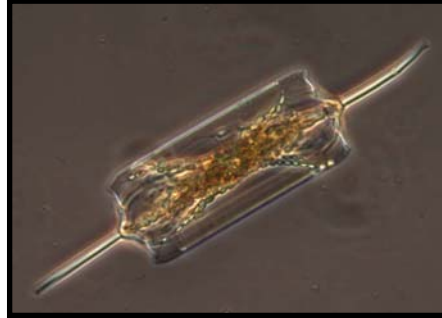
Chaetoceros



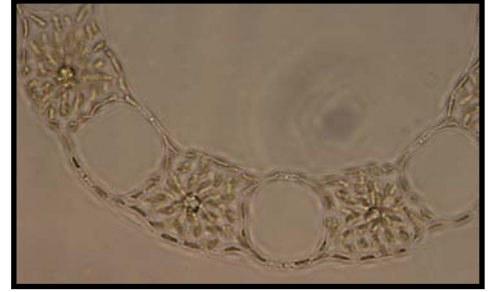
Coscinodiscus



Ditylum



Eucampia



Guinardia



Nitzschia



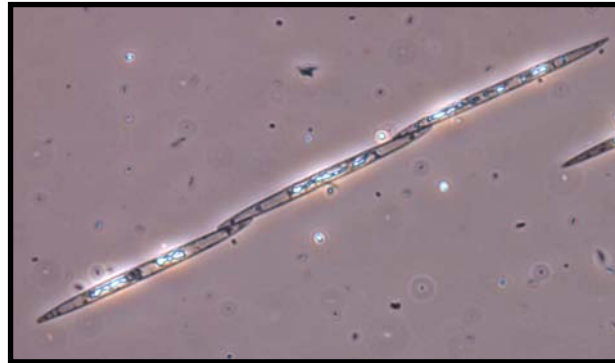
Odontella



Pleurosigma



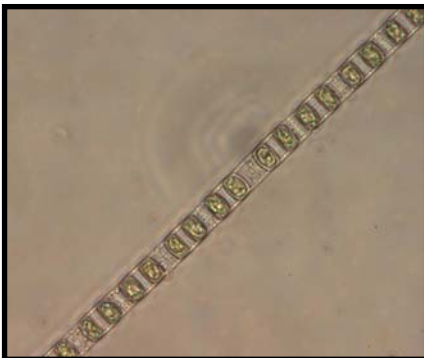
Pseudo-nitzschia



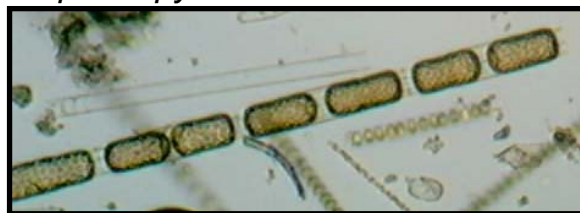
Rhizosolenia



Skeletonema



Stephanopyxis



Thalassionema

