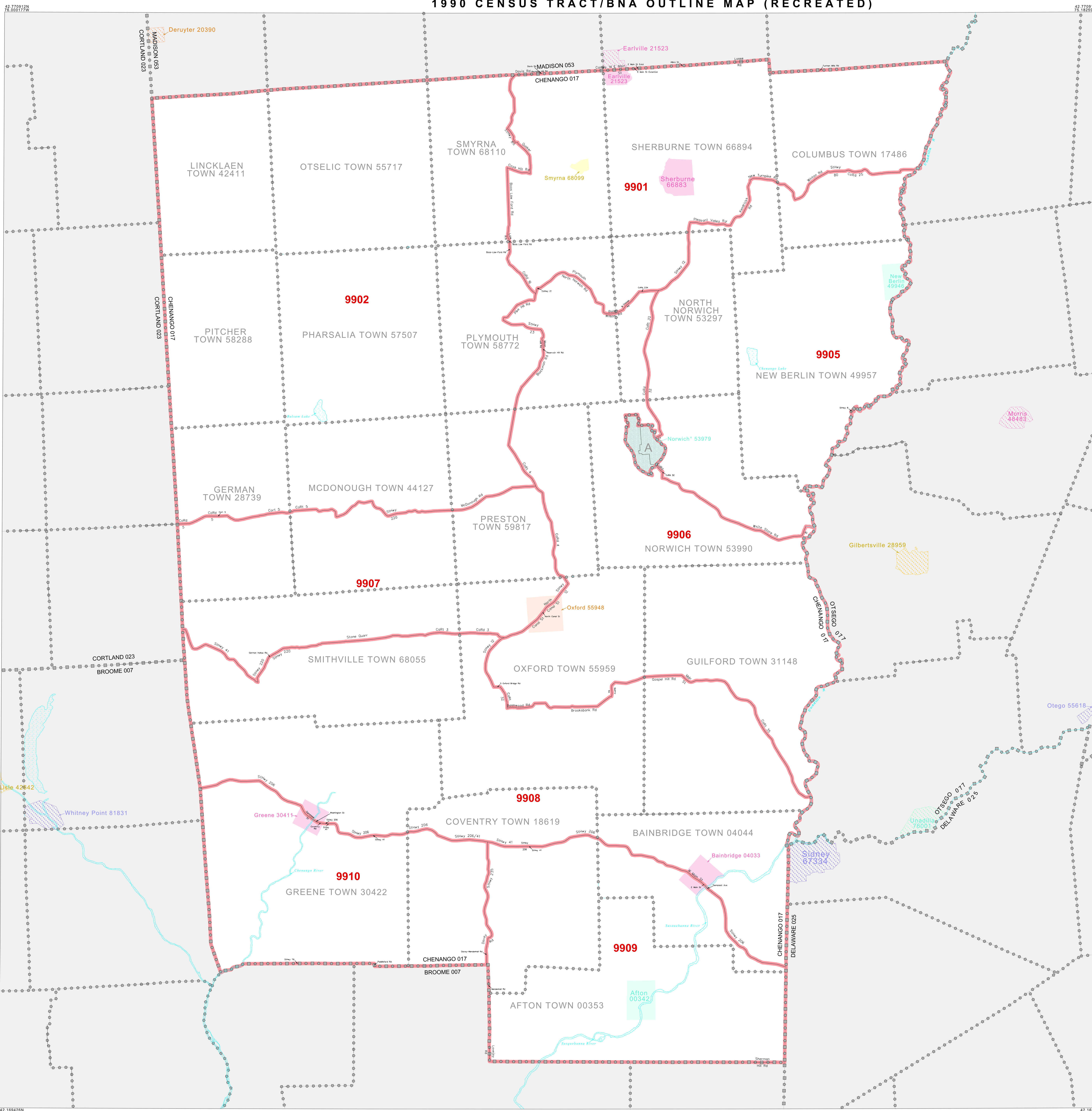


# 1990 CENSUS TRACT/BNA OUTLINE MAP (RECREATED)



### LEGEND

SYMBOL	NAME STYLE
*****	INTERNATIONAL
*****	AIR
*****	Trust Land
*****	TJSA / TDSA / ANVSA
*****	ANRC
-----	MINOR CIVIL DIV' / CCD
-----	Place within Subject Entity
-----	Incorporated Place / CDP <sup>1</sup>
-----	Place outside of Subject Entity
-----	Incorporated Place / CDP <sup>1</sup>
-----	Census Tract / BNA <sup>2</sup>

**ABBREVIATION REFERENCE:** AIR - American Indian Reservation; Trust Land - OIP-Reservation Trust Land; TDSA - Tribal Jurisdiction Statistical Area; TJSA - Tribal Designated Statistical Area; ANVSA - Alaska Native Village Statistical Area; ANRC - Alaska Native Regional Corporation; CCD - Census Civil Division; CDP - Census Designated Place; BNA - Block Numbering Area

### FEATURES

All Roads	Stream/Shareline
Railroad	Canal/Levee/Stream
Pipe/Flag Line	Wetland
Physical Feature	Electric
Natural Boundary	

Inset      Out Area

Where international, state, and/or county boundaries coincide, the map shows the boundary symbol for only the highest-ranking of these boundaries.  
<sup>1</sup> A "1" following a place name indicates that the place is also a false MCD.  
<sup>2</sup> In 1990, the census-90 census population of ships at sea was allocated to census tracts with a "99" suffix. An anchor symbol appeared on the 1990 maps locating a census-90 vessel tract. These maps show a very small area symbolized as a census tract with the census tract number shown near the area.