



U.S. Department
of Homeland Security
**United States
Coast Guard**

**LOCAL NOTICE TO MARINERS
WEEKLY EDITION**

District: 7

Week: 08/07

Issued by:
Commander, Seventh Coast Guard District
909 SE 1st Avenue, Miami, Florida 33131-3050
Telephone (305) 415-6730 or (305) 415-6751
Fax (305) 415-6757
Office hours 7:30 a.m. - 4:00 p.m., M-F

BROADCAST NOTICE TO MARINERS

Navigation information having been of immediate concern to the Mariner, and promulgated by the following broadcasts, has been incorporated in this notice when still effective:

- CCGD7 (D7) BNM 309-07 to 363-07
- SECTOR CHARLESTON (CHA) BNM 030-07 to 032-07
- SECTOR JACKSONVILLE (MAY) BNM 024-07 to 054-07
- SECTOR MIAMI (MIA) BNM 040-07 to 070-07
- SECTOR KEY WEST (KEY) BNM 017-07 to 024-07
- SECTOR ST. PETERSBURG (STP) BNM 127-07 to 130-07
- SECTOR SAN JUAN (GAN) BNM 004-07 to 018-07

NOTES: (1) Unless otherwise indicated, missing and destroyed structures are presumed to be in the immediate vicinity, mariners should proceed with caution.

(2) The Local Notice to Mariners consists of a Weekly Edition.

(3) Inquiries, Published Articles or Information: (e-mail) Bernard.A.Dukes@uscg.mil

REFERENCES: Light List, Vol. III, Atlantic and Gulf Coasts, 2006 Edition (COMDTPUB P16502.3).
U.S. Coast Pilot 4, Atlantic Coast: Cape Henry to Key West, 2006 (38th Edition).
U.S. Coast Pilot 5, Atlantic Coast: Gulf of Mexico, Puerto Rico and Virgin Islands 2006 (34rd) Edition.

The Local Notice to Mariners is available online at:
<http://www.navcen.uscg.gov/lnm/d7>

The United States Coast Guard Navigation Information Service (NIS)

The United States Coast Guard Navigation Information Service (NIS), operated by the USCG Navigation Center, is staffed 24 hours a day, 7 days a week. The NIS provides information on the current operational status, effective policies, and general information for GPS, DGPS, and LORAN-C. The NIS also disseminates Safety Broadcasts (BNM), Local Notice to Mariners (LNM), and the latest Notice Advisory to Navstar Users (NANU). NANU notices can be obtained via email subscription through the USCG Navigation Center website: <http://www.navcen.uscg.gov/gps/status/default.htm>.

In addition, the NIS investigates all reports of degradation or loss of GPS, DGPS or LORAN service. Mariners are encouraged to report all degradation or loss of radio navigation services to the NIS via any of the following: Phone: (703) 313-5900, Email: webmaster@smtp.navcen.uscg.mil, or on the World Wide Web at: <http://www.navcen.uscg.gov>

REPORT DISCREPANCIES IN AIDS TO NAVIGATION TO THE NEAREST COAST GUARD UNIT

SAFE BOATING AND SEAMANSHIP PROGRAMS: (See Enclosure Section)

ABBREVIATIONS

A through I

ACOE - Army Corps of Engineers
ADRIFT - Buoy Adrift
AICW - Atlantic Intracoastal Waterway
B - Buoy
BKW - Breakwater
B - Refer to Light List
BNM - Broadcast Notice to Mariner
CG - Refer to Light List
CHAN - Channel
CGD - Coast Guard District
CR - Refer to Light List
C/O - Cut Off
CONT - Contour
CONSTR - Construction
CRK - Creek
CONST - Construction
DBN - Daybeacon
DBD/DAYBD - Dayboard
DBN/DEST - Daybeacon Destroyed
DBN IMCH - Daybeacon Improper Characteristic
DISCON - Discontinued
DMGD - Daybeacon Damaged
EST - Established Aid
EVAL - Evaluation
EXT - Extinguished
FL - Flashing
FS - Fog Signal
HAZ - Hazard to Navigation
HBR - Harbor
HOR - Horizontal Clearance
HT - Height
ICW - Intracoastal Waterway
IMCH - Improper Characteristic
INL - Inlet
INOP - Not Operating
ISL - Islet
-

K through M

KBG - Refer to Light List
KBG-I - Refer to Light List
KBR - Refer to Light List
KBR-I - Refer to Light List
KBW - Refer to Light List
KGB - Refer to Light List
KGB-I - Refer to Light List
KGR - Refer to Light List
KGR-I - Refer to Light List
KGW - Refer to Light List
KGW-I - Refer to Light List
KRB - Refer to Light List
KRB-I - Refer to Light List
KRG - Refer to Light List
KRG-I - Refer to Light List
KRW - Refer to Light List
KWB - Refer to Light List
KWB-I - Refer to Light List
KWG - Refer to Light List
KWG-I - Refer to Light List
KWR - Refer to Light List
KWR-I - Refer to Light List
LAT - Latitude
LB - Lighted Buoy
LBB - Lighted Bell Buoy
LHB - Lighted Horn Buoy
LGB - Lighted Gong Buoy
LONG - Longitude
LNM - Local Notice to Mariners
LT - Light
LT CONT - Light Continuous
LWB - Lighted Whistle Buoy
LWP - Left Watching Properly
MISS - Missing
MR - Refer to Light List
MR-I - Refer to Light List

N through Z

NB - Refer to Light List
N/C - Not Charted
ND - Refer to Light List
NG - Refer to Light List
NGA - National Geospatial-Intelligence Agency
NL - Refer to Light List
NO - Number
NOS - National Ocean Service
NR - Refer to Light List
NW - Refer to Light List
NW - Notice Writer
NY - Refer to Light List
OBSCU - Obscured
OBST - Obstruction
OBSTR - Obstruction
PRIV - Private Aid
RBN - Radio Beacon
REBUILT - Aid Rebuilt
RECOVERED - Aid Recovered
RED - Red Buoy
REDINT - Reduced Intensity
RRL - Range Rear Light
RELIGHTED - Aid Relighted
RELOC - Relocated
RESET ON STATION - Aid Reset on Station
RFL - Range Front Light
RIV - River
SEC - Section
SG - Green Square
SG-SY - Green Square with Yellow Square
SHL - Shoaling
SND - Sound
TEMP - Temporary Aid Change
St M - Statute Mile
TR - Red Triangle
TRLB - Temporarily Replaced by Lighted Buoy
TRLT - Temporarily Replaced by Light
TR-TY - Red Triangle with Yellow Triangle
TRUB - Temporarily Replaced by Unlighted Buoy

Additional Abbreviations Specific to this LNM Edition: None

SECTION I - SPECIAL NOTICES

This section contains information of special concern to the Mariner.

DGPS TAMPA, FLORIDA OFF AIR TIMES

DGPS Tampa Broadcast site will be off air/unusable on February 21, 2007, from 1200Z-2200Z.

LNM: 08/07

LORAN-C OPERATIONS, GREAT LAKES CHAIN (RATE 8970) AND NORTH EAST CHAIN (RATE 9960)

The Great Lakes Chain (Rate 8970) and the North East Chain (Rate 9960) Transitioned to time of Transmission Control at 0300Z (0700), January 17, 2007. Address inquiries to the Chain Operations Control Officer (LT J.Bailey) at (703) 313-5873.

Current Loran-C Status is available twenty-four (24) hours per day through Internet address: [HTTP://WWW.Navcen.USCG.Gov](http://WWW.Navcen.USCG.Gov)

LNM: 04/07

NORTH ATLANTIC RIGHT WHALES WARNING:

From December to March the coastal waters between Altamaha Sound, GA, and Sebastian Inlet, FL, are used as calving grounds by the severely endangered North Atlantic Right Whale. This is the world's only known calving ground for this species. Right Whales are the rarest whales in the world and are protected under law from disturbance or injury by the endangered species act of 1973, and the Marine Mammal Protection act of 1972. Right Whales, especially females and their calves, are slow swimmers and frequently lie at the surface. This behavior

NORTH ATLANTIC RIGHT WHALES WARNING:

makes them vulnerable to collisions with ships, which are a significant source of mortality. Vessels operating within 25 miles of shore between 31-27N and 29-50N and within five miles of shore from 29-50N and 28-00N should take precautions to avoid collisions with Right Whales.

For Complete Text of Message See Enclosure (1).

LNM: 44/06

SPECIAL WARNING NUMBER 123, SOMALI.

Due to continuing conditions of armed conflict and lawlessness in Somalia and waters off its coast. Mariners are advised to avoid the Port of Mogadishu and to remain at least 200 nautical miles distant from the Somali Coast.

For Complete Text of Message see Enclosure (2).

LNM: 47/05

OPERATION "ON GUARD"

U. S. Coast Guard Marine Safety Office Miami announces Operation "ON GUARD". This operation is designed to employ Coast Guard - active duty, reserve and auxiliary, Federal Bureau of Investigation, US Customs Service, US Immigration and Naturalization Service and the Florida Department of Law Enforcement personnel in response to suspected terrorist activity at the waterfront facilities of the United States.

For Complete Text of Message See Enclosure (3).

NAVAL PROTECTION ZONES

The U. S. Coast Guard has established protection zones around U. S. Naval vessels within U. S. navigable waters. Naval vessels protection zones are established within 100 yards of any U. S. Naval vessel. This includes any vessel owned, operated, chartered, or leased by the U. S. Navy or under the operational control of the U. S. Navy.

Vessels within 500 yards of a U.S. Naval vessel shall operating at the minimum speed necessary to maintain a safe course and proceed as directed by the official patrol. Mariners may contact the U.S. Coast Guard on VHF Channel 16 regarding this message.

DATES OF LATEST EDITIONS, NAUTICALS CHARTS AND MISCELLANEOUS MAPS

The Dates of Latest Editions, Nautical Charts and Miscellaneous Maps, dated January 1, 2007, published by the National Ocean Service, is available for issue. It may be obtained free by mail from the FAA/National Aeronautical Charting Office, Distribution Division AVN-530, 10201, Good Luck Road, Glenn Dale, MD, 20769-9700, by telephone at 1-800-638-8972 or from your local authorized nautical chart sales agent. This is a quarterly publication listing the most recent editions of nautical charts, miscellaneous maps and publications relating to navigation, weather, etc. with brief descriptions and up-to-date prices for most of the publications listed. Much of this information may also be obtained online at: <http://chartmaker.ncd.noaa.gov/mcd/dole.htm>

LNM: 05/07

INTERNET DELIVERY OF U.S. NOTICE TO MARINERS

The National Geospatial-Intelligence Agency (NGA) has changed the way the U.S. Notice to Mariners are made available to the maritime community. NGA will continue to provide U.S. Notice to Mariners to the public but only in the digital version exclusively via the Internet.

U.S. COAST PILOT 4, ATLANTIC COAST: CAPE HENRY, VA TO KEY WEST, FL

PUBLICATION - National Ocean Service - U.S. Coast Pilot 4, Atlantic Coast: Cape Henry, VA to Key West, FL, 2006, 38th Edition, is ready for issue and may be obtained from:

Federal Aviation Administration
National Aeronautical Charting Office
Distribution Division, AVN - 530
10201 Good Luck Road
Glenn Dale, MD 20769-9700

and authorized agents of the National Ocean Service. Price \$26.00. The 2006 Edition cancels the preceding

U.S. COAST PILOT 4, ATLANTIC COAST: CAPE HENRY, VA TO KEY WEST, FL

2005 Edition. All corrections to the previous edition issued in Notices to Mariners are incorporated in this edition.

Mariners are encouraged to use the convenient -RECORD OF CHANGES- form on Page VI of this book. All Coast Pilot changes published in the U.S. Coast Guard Local Notice to Mariners, National Geospatial-Intelligence Agency Notice to mariners, and on the Internet at: <http://nauticalcharts.noaa.gov/nsd/cpdownload.htm>. are serially numbered (i.e., Changes No. 1, Changes No. 2. etc.) to assist you in tracking the changes.

SECTION II - DISCREPANCIES

This section lists all reported and corrected discrepancies related to Aids to Navigation in this edition. A discrepancy is a change in the status of an aid to navigation that differs from what is published or charted.

DISCREPANCIES (FEDERAL AIDS)

LLNR	Aid Name	Status	Chart No.	BNM Ref.	LNM St	LNM End
515	St Simons Lighted Whistle Buoy STS	LT EXT/RAC INOP	11504	NA	05/07	
720	St Lucie Entrance Lighted Buoy 2	OFF STA	11474	068-07 MIA	07/07	
805	Port Everglades Spoil Bank East Daybeacon	TRUB	11470	506-05 MIA	47/05	
950	Elbow Reef Light 6	TRLB	11451	301-05 KWT	39/05	
970	Davis Reef Light 14	TRUB	11464	106-06 KWT	39/05	
975	Crocker Reef Buoy 16	TRUB	11464	209-06 KWT	48/06	
1005	Big Pine Shoal Light 22	TRLB	11446	567-05 KWT	40/05	
1010	Looe Key Light 24	TRLB	11442	187-06 KWT	39/05	
1080	Twenty-Eight Foot Shoal Light	TRLB/RAC INOP	11439	174-06 KWT	40/05	
1085	Halfmoon Shoal Light WR2	TRLB	11439	112-06 KWT	30/05	
1090	Rebecca Shoal Light	TRLT/DBN DMGD/DBD DEST	11439	113-06 KWT	42/05	
1190	New Ground Rocks Light	DBD DEST	11439	373-05 KWT	42/05	
1230	Cape Romano Shoals Light	TRLB	11430	058-06 STP	47/05	
1300	Charlotte Harbor Entrance Lighted Bell Buoy 2	OFF STA	11425	1558-06 STP	51/06	
1620	Cedar Keys Main Channel Light 1	TRLB	11408	0337-06 STP	12/05	
1625	Cedar Keys Northwest Channel Approach Light 2	TRLB	11408	0673-06 STP	19/06	
1645	Horseshoe Beach Approach Light 2	TRLB/LT EXT/DBN DEST	11407	0859-06 STP	25/06	
1750	Little River Inlet Daybeacon 18	TRUB	11534	NA	47/06	
1920	Winyah Bay Channel Lighted Buoy 9	REDUCED INT	11532	380-06 CHA	51/06	
4275	Beaufort River Range B Rear Light	DBD DEST	11507	019-07 CHA	03/07	
5090	Port Wentworth Channel Light 22	LT EXT/DBN DEST	11514	367-06 CHA	49/06	
5095	Port Wentworth Channel Range B Front Light	DBN DMGD	11514	344-06 CHA	46/06	
5165	Port Wentworth Channel Daybeacon 36	TRUB	11514	NA	04/07	
5740	Ossabaw Sound Preferred Channel Buoy N	TRUB	11511	332-06 CHA	42/06	
6030	St Simons Lighted Whistle Buoy STS	LT EXT/RAC INOP	11504	NA	05/07	
6575	St Marys Entrance Lighted Buoy 11	OFF STA	11503	060-07 JAX	08/07	
6780	Cumberland Sound Range Buoy Range Front Light	LT EXT	11503	NA	07/07	
6855	Cumberland Sound Upper Range C Rear Light	LT EXT	11503	NA	07/07	
6975	Kings Bay South Degaussing R F DB	TRLB	11503	443-06 JAX	51/06	
7120	St Johns Bar Cut Range Rear Light	OBSTRUCTED	11491	054-07 JAX	07/07	
7595	Chaseville Middle Ground Shoal Daybeacon N	TRUB	11491	31-07 JAX	04/07	

7600	Chaseville Middle Ground Shoal Daybeacon S	TRUB	11491	031-07 JAX	04/07
7845	Ragged Point Light 12	TRUB	11492	910-06 JAX	40/06
8490	Mount Royal Daybeacon 60	TRUB	11487	057-07 JAX	07/07
9210	Butchers Bend Cutoff Daybeacon 111	TRUB	11498	293-06 JAX	35/06
9845	Fort Pierce Inlet Inner Harbor Lighted Buoy 10	TRLB	11475	NA	02/07
9995	St Lucie Entrance Lighted Buoy 2	OFF STA	11474	068-07 MIA	07/07
10000	St Lucie Inlet Buoy 4	OFF STA	11472	047-07 MIA	05/07
10135	St Lucie Inlet Buoy 7	OFF STA	11472	063-07 MIA	05/07
10303	Hillsboro Inlet Entrance Daybeacon 5	TRUB	11467	571-06 MIA	45/06
10465	Miami Main Channel Entrance Range Rear Light	DBD DEST	11468	NA	50/06
10505	Government Cut Range Front Light	LT EXT	11468	NA	07/07
10775	Biscayne Bay Light 50	TRUB	11468	086-07 MIA	08/07
10850.5	Biscayne Channel Daybeacon 13	TRUB		NA	50/06
11185	Angelfish Creek Daybeacon 1	TRLB	11464	017-07 KWT	52/06
11200	Angelfish Creek Daybeacon 3A	TRLB	11463	613-06 KWT	48/06
12560	Little Money Key Shoal Daybeacon	DBN DEST	11449	004-07 KWT	02/07
12655	Big Spanish Channel Daybeacon 52	TRLB	11448	150-06 KWT	32/06
13610	East Turtle Shoal Light 45	TRUB	11449	566-05 KWT	41/05
13815	Boot Key Harbor Daybeacon 21	TRUB/DBN DEST	11449	207-06 KWT	46/06
15220	Key West Northwest Channel Light 12	TRLB	11441	202-06 KWT	46/06
15365	Calda Channel Daybeacon 11	TRUB	11441	403-05 KWT	45/05
15440	Dry Tortugas Southeast Channel Light 1	LT EXT/DBN DEST	11438	166-04 KWT	34/04
15450	Dry Tortugas Southeast Channel Light 3	TRLB	11438	285-05 KWT	41/05
15455	Dry Tortugas Southeast Channel Daybeacon 4	TRUB	11438	107-06 KWT	37/05
15505	Dry Tortugas Southwest Channel Daybeacon 3	OFF STA /TRLB	11438	517-05 KWT	45/05
15705	Flamingo Channel Daybeacon 14	TRUB	11433	267-04 MIA	24/04
15835	Whitewater Bay Daybeacon 36	DBD DMGD	11433	206-06 MIA	16/06
16030	Indian Key Pass Light 15	TRLB	11430	031-07 STP	03/07
16175	Barron River Channel Daybeacon 35	TRLB	11430	NA	08/07
17415	Big Marco Pass-Gordon Pass Daybeacon 65	TRUB	11430	NA	42/06
17505	Gordon Pass Channel Light 9	LT EXT	11430	107-07 STP	06/07
17520	Gordon Pass Channel Light 13	TRLB	11430	103-07 STP	02/07
17595	Naples Bay Channel Daybeacon 25	TRUB/DBN DEST	11430	1609-06 STP	52/06
17600	Naples Bay Channel Daybeacon 26	TRLB	11430	1322-06 STP	42/06
18090	Matanzas Pass Channel Daybeacon 3	TRLB	11427	1416-06 STP	45/06
18095	Matanzas Pass Channel Daybeacon 4	TRUB	11427	1598-06 STP	52/06
18275	Matanzas Pass Channel Daybeacon 18	TRUB	11427	154-07 STP	07/07
18295	Matanzas Pass Channel Daybeacon 26	TRUB	11427	NA	07/07
19895	Charlotte Harbor Entrance Lighted Bell Buoy 2	OFF STA	11425	1558-06 STP	51/06
19925	Charlotte Harbor Channel Lighted Buoy 5	LT EXT	11425	137-07 STP	07/07
20675	Peace River Daybeacon 4	DBD DEST	11426	NA	05/07
22175	Terra Ceia Bay Daybeacon 10	LT EXT	11411	NA	06/07
22355	Mullet Key Channel Range Front Light	DBD DMGD	11415	0899-06 STP	27/06
22395	Mullet Key Channel Lighted Buoy 26	BUOY DMGD	11416	180-06 STP	08/07
23240	Alafia River Range Front Light	LT EXT	11416	156-07 STP	08/07
24715.5	Point Pinellas Channel Light 5	TRLB	11415	1535-06 STP	50/06
26165	Anclote River Entrance Daybeacon 6	TRUB	11411	1405-06 STP	44/06
26190.5	Anclote River Daybeacon 12	TRUB	11411	114/106-07 STP	04/07
28370	Homosassa Bay Light 4	LT EXT	11409	052-07 STP	04/07
28635	Homosassa River Daybeacon 69A	TRUB	11409	0331-06 STP	10/06

29240	Cross Florida Greenway Light 22	TRUB	11408	1072-06 STP	32/06
29455	Withlacoochee River Entrance Daybeacon 16	TRUB	11408	1478-06 STP	47/06
29755	Cedar Keys Main Channel Light 1	TRLB	11408	0337-06 STP	12/05
29920	Cedar Keys Northwest Channel Approach Light 2	TRLB	11408	0673-06 STP	19/06
30360	Horseshoe Beach Approach Light 2	TRLB/LT EXT/DBN DEST	11407	0859-06 STP	25/06
30370	Horseshoe Beach Approach Daybeacon 5	TRLB	11407	0857-06 STP	25/06
30740	Cabras Light	LT EXT/DBN DEST	25670	229-06 SJN	37/06
30845	Army Terminal Channel Lighted Buoy A	LT EXT	25670	055-07 SJN	08/07
31085	Graving Dock Channel Lighted Buoy 4	LT EXT	25670	055-07 SJN	08/07
31155	Cabo San Juan Light	LT IMCH	25667	261-06 SJN	37/06
31655	Punta Colorada Lighted Buoy 9	LT EXT	25654	052-07 SJN	08/07
32290	Cabo Rojo Light	LT IMCH	25671	027-07 SJN	06/07
32295	Isla de Mona Light	LT IMCH	25671	054-07 SJN	08/07
32610	East Gregerie Channel Lighted Buoy WR1	SINKING	11507	NA	08/07
32880	Christiansted Harbor Channel Lighted Buoy 3	SINKING	25645	269-06 SJN	43/06
33345	Southwest Cape Shoal Buoy 2	TRUB	25644	073-06 SJN	13/06
33410	St Nicolas Point Channel Light 6	TRUB	26230	067-05 GAN	11/05
33535	Mud Island Light 1	TRUB	26230	068-05 GAN	11/05
33610	Little River-Winyah Bay Light 4	TRLB	11534	NA	42/06
34505	Winyah Bay-Charleston Harbor Light 116	TRLB	11518	374-06 CHA	50/06
35070	South Edisto River Range A Front Light	REDUCED INT	11517	415-05 CHA	50/05
35535	Beaufort River Range B Rear Light	DBD DEST	11507	019-07 CHA	03/07
36555	Johnson Creek Daybeacon 131	TRUB	11507	330-06 CHA	44/06
36620	South Newport River Light 135	TRLB	11507	298-06 CHA	38/06
36785	Old Teakettle Creek Light 173	DBN DMGD	11507	364-06 CHA	48/06
37355	Jekyll Creek Daybeacon 24	TRUB	11489	271-06 CHA	36/06
37775	Cumberland Sound Upper Range C Rear Light	LT EXT	11503	NA	07/07
37815	Cumberland Sound Range Buoy Range Front Light	LT EXT	11503	NA	07/07
38075	South Amelia River Light 28	TRLB	11489	052-07 JAX	06/07
38195	Sawpit Creek Daybeacon 50	TRUB	11489	010-07 JAX	51/06
39061	Mantanzas River Daybeacon 7	TRUB	11485	399-06 JAX	47/06
40195	Halifax River Daybeacon 44	TRUB	11485	174-06 JAX	20/06
40615	Ponce de Leon Cut Junction Daybeacon	TRUB	11485	493-05 JAX	51/05
40625	New Smyrna Beach Light 21	TRLB	11485	406-06 JAX	49/06
40660	New Smyrna Beach Daybeacon 32	TRUB	11485	455-06	01/07
40845	New Smyrna Beach Daybeacon 62	TRUB/DBN DEST	11485	437-06 JAX	51/06
40960	Mosquito Lagoon Daybeacon 14	TRUB	11485	348-06 JAX	41/06
41025	Mosquito Lagoon Daybeacon 30	DBN DEST	11485	456-06 JAX	02/07
41190	Indian River (North Section) Daybeacon 23	TRUB	11485	255-06 JAX	29/06
41225	Titusville Yacht Basin Daybeacon 4	TRUB	11485	063-07 JAX	08/07
41725	Banana River North Daybeacon 13A	TRLB	11478	309-06 JAX	37/06
42225	Indian River (North Section) Light 85	TRLB	11485	028-07 JAX	05/07
42330	Indian River (North Section) Daybeacon 98	TRUB	11472	434-06 JAX	50/06
42335	Indian River (North Section) Daybeacon 99	TRUB	11472	400-06 JAX	47/06
43545	Indian River (South Section) Daybeacon 58	TRUB	11472	621-06 MIA	48/06
43805	Indian River (South Section) Light 85	DBD DEST	11472	027-07 JAX	05/07
45100	Taylor Creek Channel Daybeacon 3	TRUB	11475	018-07 MIA	02/07

45280	Indian River (South Section) Daybeacon 194	TRUB	11472	NA	50/06
45935	Great Pocket Daybeacon 3A	TRUB	11472	019-07 MIA	03/07
46130	Hobe Sound Daybeacon 36	TRUB	11472	040-07 MIA	04/07
46400	Lake Worth Creek Daybeacon 15	TRUB	11472	064-07 MIA	06/07
46880	Lake Worth South Daybeacon 14	TRUB	11472	029-07 MIA	49/06
46985	Lake Worth South Daybeacon 40	TRUB	11467	077-07 MIA	07/07
47190	Hillsboro River Daybeacon 68	TRUB	11467	011-07 MIA	02/07
47200	Hillsboro River Daybeacon 68B	TRUB	11467	651-06 MIA	51/06
47720	Dumfoundling Bay Daybeacon 53	TRUB	11467	070-07 MIA	07/07
47760	Biscayne Creek Light 60	TRUB	11467	012-07 MIA	02/07
47840	Biscayne Bay Daybeacon 11	TRLB	11467	048-07 MIA	05/07
48470	Biscayne Bay Light 50	TRUB	11468	086-07 MIA	08/07
50100	Pelican Bank Southwest Shoal Daybeacon	MISSING	11463	NA	08/07
50710	St Lucie River Daybeacon 8	TRUB	11472	270-06 MIA	21/06
50720	St Lucie River Light 11	TRLB/DBN DMGD	11472	563-06 MIA	45/06
50760	Woods Point Daybeacon 1	TRUB	11472	079-07 MIA	07/07
51120	St Lucie Canal Daybeacon 38	TRUB	11428	109-06 MIA	09/06
51125	St Lucie Canal Daybeacon 39	TRUB	11428	566-06 MIA	45/06
51130	St Lucie Canal Daybeacon 39A	TRUB	11428	017-07 MIA	02/07
51270	Clewiston Channel (Rt 1B) Daybeacon 4	TRUB	11428	547-06 MIA	44/06
51285	Clewiston Channel (Rt 1B) Daybeacon 7	TRUB	11428	548-06 MIA	43/06
51445	Lake Okeechobee (Rt 2) Daybeacon 13	TRUB	11428	001-06 MIA	45/05
51465	Lake Okeechobee (Rt 2) Daybeacon 19	TRUB	11428	N/A	45/05
51475	Lake Okeechobee (Rt 2) Daybeacon 21	TRUB	11428	020-07 MIA	03/07
51475	Lake Okeechobee (Rt 2) Daybeacon 21	TRUB	11428	673-05 MIA	45/05
51500	Lake Okeechobee (Rt 2) Daybeacon 26	TRUB	11428	002-06 MIA	45/05
51510	Lake Okeechobee (Rt 2) Daybeacon 28	TRUB	11428	N/A	45/05
51535	Lake Okeechobee (Rt 2) Daybeacon 34	TRUB	11428	003-06 MIA	45/05
51565	Lake Okeechobee (Rt 2) Daybeacon 41	TRUB	11428	004-06 MIA	45/05
51600	Lake Okeechobee (Rt 2) Daybeacon 53	TRUB	11428	N/A	45/05
51605	Lake Okeechobee (Rt 2) Daybeacon 54	TRUB	11428	N/A	45/05
51730	Bacom Point Channel Daybeacon 2	TRUB	11428	N/A	45/05
51750	Bacom Point Channel Daybeacon 6	TRUB	11428	006-06 MIA	02/06
51770	Lake Okeechobee (Rt 2) Daybeacon 80	TRUB	11428	N/A	45/05
51780	Lake Okeechobee (Rt 2) Daybeacon 84	TRLB	11428	N/A	45/05
51785	Lake Okeechobee (Rt 2) Daybeacon 86	TRUB	11428	005-06 MIA	45/05
51795	Lake Okeechobee (Rt 2) Daybeacon 89	TRUB	11428	546-06 MIA	45/05
51800	Lake Okeechobee (Rt 2) Daybeacon 91	TRUB	11428	N/A	45/05
51830	Lake Okeechobee (Rt 2) Daybeacon 98	TRUB	11428	545-06 MIA	45/05
51900	Taylor Creek Daybeacon 3	DBN DEST	11428	013-07 MIA	02/07
54280	Caloosahatchee River Daybeacon 84	TRUB	11427	153-07 STP	08/07
54760	Caloosahatchee River Daybeacon 94	TRLB/DBN DEST	11427	1448-06 STP	46/06
54775	Caloosahatchee River Range Rear Light H/I	DBD DEST	11427	0480-06 STP	16/06
55297	Pine Island Sound Daybeacon 11A	TRUB	11427	036-07 STP	03/07
56105	Pine Island Sound Light 63	TRLB/DBD DEST	11427	1232-06 STP	39/06
56125	Pine Island Sound Light 69	TRLB	11427	NA	44/06
57055	Gasparilla Sound Channel Daybeacon 27	TRLB/DBD DMGD	11425	1613-06 STP	52/06
57550	Lemon Bay Channel Daybeacon 33	TRUB	11425	1501-06 STP	48/06
58810	Siesta Key-Tampa Bay Light 17	DBN DMGD	11425	172-06 STP	08/07
59325	Siesta Key-Tampa Bay Daybeacon 36	TRUB	11425	1602-06 STP	52/06
60290	Mullet Key Channel Lighted Buoy 26	BUOY DMGD	11416	180-06 STP	08/07
60380	Sunshine Skyway Channel Daybeacon 15	TRLB	11411	1596-06 STP	52/06
60525.5	Point Pinellas Channel Light 5	TRLB	11415	1535-06 STP	50/06

61405	Sand Key Daybeacon 10	TRUB	11411	074-07 STP	04/07
62295	St Joseph Sound Daybeacon 42	DBN DMGD	11411	184-07 STP	08/07
	AUTEC Site 4 Light 2	LT EXT	26312	387-04 D7	09/04
	Cap Haitien Daybeacon 13	DBD DEST	26147	NA	07/06
	Cap Haitien Daybeacon 13	DBN DMGD	26147	NA	07/06

DISCREPANCIES (FEDERAL AIDS) CORRECTED

LLNR	Aid Name	Status	Chart No.	BNM Ref.	LNM St	LNM End
7125	St Johns River Entrance Lighted Buoy 3	WATCHING PROPERLY	11491	NA	07/07	08/07
7500	Drummond Creek Cut Lighted Buoy 59	WATCHING PROPERLY	11491	NA	08/07	08/07
7645	Commodore Point Shoal Lighted Buoy 80	WATCHING PROPERLY	11491	NA	07/07	08/07
10485	Miami Main Channel Lighted Buoy 4	WATCHING PROPERLY	11468	NA	08/07	08/07
10490	Miami Main Channel Lighted Buoy 5	WATCHING PROPERLY	11468	NA	06/07	08/07
14835	Key West Main Channel Lighted Buoy 6	WATCHING PROPERLY	11447	NA	07/07	08/07
18000	San Carlos Bay Channel Light 2	WATCHING PROPERLY	11427	NA	08/07	08/07
21730	Siesta Key-Tampa Bay Junction Daybeacon NP	WATCHING PROPERLY	11425	NA	07/07	08/07
22740	Tampa Bay Cut D Channel Lighted Buoy 6D	WATCHING PROPERLY	11416	NA	08/07	08/07
23190	Hillsborough Cut C Channel Outbound Range Rear Light	WATCHING PROPERLY	11416	NA	08/07	08/07
23440	Hillsborough Cut C Channel Inbound Range Rear Light	WATCHING PROPERLY	11416	NA	05/07	08/07
23670	Tampa Bay Cut G Channel Range Rear Light	WATCHING PROPERLY	11416	NA	07/07	08/07
23705	Tampa Bay Cut J Channel Lighted Buoy 10J	WATCHING PROPERLY	11416	NA	05/07	08/07
31610	Cabezas Puercas Buoy 4	WATCHING PROPERLY	25653	NA	08/07	08/07
32640	West Gregerie Channel Lighted Buoy 4	WATCHING PROPERLY	25649	NA	08/07	08/07
42175	Indian River (North Section) Daybeacon 79	WATCHING PROPERLY	11485	NA	01/07	08/07
47150	Lake Boca Raton Daybeacon 64	WATCHING PROPERLY	11467	NA	51/06	08/07
55295	Pine Island Sound Light 11	WATCHING PROPERLY	11427	NA	08/07	08/07
58565	Siesta Key-Tampa Bay Junction Daybeacon NP	WATCHING PROPERLY	11425	NA	07/07	08/07
60435	Sunshine Skyway Channel Light 26	WATCHING PROPERLY	11411	NA	08/07	08/07

DISCREPANCIES (PRIVATE AIDS)

LLNR	Aid Name	Status	Chart No.	BNM Ref.	LNM St	LNM End
425	Georgia Fish Haven Buoy L	DBN DMGD	11480	NA	05/07	
655	Sebastian Inlet North Jetty Light	LT IMCH	11476	N/A	33/04	
774	Boca Raton Inlet South Jetty Light 1	LT EXT	11472	337-04 MIA	01/04	
840	NOAA DATA Lighted Buoy 41009	OFF STA	11480	560-04 MAY	37/04	
855	NOAA DATA Lighted Buoy 42036	ADRIFT	11400	1044-05 MIA	29/05	
965.3	NOAA Life Support Lighted Buoy (AQUARIUS)	OFF STA	11463	019-04 KWT	05/04	
1430	Redington Shores Fishing Pier North Light	LT EXT	11412	0927-05 STP	28/05	
2665	Cooper River Degaussing Range E PI Light	LT EXT	11524	747-00 GD7	33/00	
2670	Cooper River Degaussing Range West PI Light	LT EXT	11524	015-00 CHA	02/00	
2815	U South Navy Pier P Light (1)	LT EXT	11524	N/A	28/05	
2865	U.S. Navy Pier B Light	LT EXT	11524	N/A	28/05	
3015	Cooper River Ammunition Pier Light	LT EXT	11527	N/A	28/05	
3115	Amoco South Btg Dolphin Obstruction Light	LT EXT	11527	004-07 SJN	02/07	
3245	Cooper River Mon Sta Obstruction Light E	LT IMCH	11527	N/A	28/05	

3260	South Carolina Gas & Elec North Pier Light	LT EXT	11527	NA	38/06
3265	South Carolina Gas & Elec South Pier Light	LT EXT	11527	NA	38/06
4355	Baynard Cove Creek Daybeacon 4	DBN DEST	11516	N/A	05/05
4360	Baynard Cove Creek Daybeacon 6	DBN IMCH	11516	N/A	05/05
6027	Cloister Hotel North Obstruction Light	LT EXT	11508	N/A	17/05
7425	Blount Island Wharf Southwest Light	LT IMCH	11491	112-06 JAX	13/06
7430	Blount Island Wharf Northwest Light	LT IMCH	11491	111-06 JAX	13/06
9765	Sebastian Inlet Channel Daybeacon 8	DBN IMCH	11472	N/A	05/05
9770	Sebastian Inlet Channel Daybeacon 9	DBN DEST	11472	NA	09/06
9775	Sebastian Inlet Channel Daybeacon 10	DBN IMCH	11472	N/A	05/05
9795	Sebastian Inlet Channel Daybeacon 14	DBN DEST	11472	507-06 MIA	40/06
9880	Banty Saunders Rec Area Daybeacon 8	DBN IMCH	11475	N/A	13/05
11030	Caesar Creek Daybeacon 10	TRUB	11463	534-06 MIA	43/06
11045	Caesar Creek Daybeacon 13	TRUB	11464	536-06 MIA	43/06
11550	Garden Cove Daybeacon 3	DBD DEST	11463	423-05 KWT	44/05
11560	Garden Cove Daybeacon 5	DBN DEST	11463	161-05 KWT	29/05
11565	Garden Cove Daybeacon 6	DBD DEST	11463	NA	44/05
11570	Garden Cove Daybeacon 7	DBD DEST	11463	NA	44/05
11575	Garden Cove Daybeacon 8	DBD DMGD	11463	NA	19/06
11580	Garden Cove Daybeacon 9	DBD DEST	11463	NA	44/05
11585	Garden Cove Daybeacon 10	DBD DEST	11464	428-05 KWT	38/05
11590	Garden Cove Daybeacon 11	DBD DMGD	11463	429-05 KWT	39/05
11605	Garden Cove Daybeacon 13	DBD DMGD	11464	327-05 KWT	39/05
11615	Garden Cove Daybeacon 15	DBD DMGD	11463	NA	19/06
11695	John Pennekamp Coral Reef Park Buoy F	MISSING	11451	NA	13/06
11730	Grecian Rocks Obstruction Daybeacon	DBN DEST	11451	333 / 553 KWT	39/05
11740	Mosquito Bank Obstruction Daybeacon	DBN DEST	11451	554-05 KWT	47/05
11745	White Bank Obstruction Daybeacon	DBN DEST	11451	332-05 KWT	39/05
11750	French Reef Obstruction Daybeacon	DBN DEST	11451	NA	15/06
11760	Molasses Reef North Obstruction Daybeacon	DBN DEST	11451	N/A	09/06
11765.1	Port Largo Channel Daybeacon 4	DBN DEST	11463	012/329/489 KE	02/05
11765.2	Port Largo Channel Daybeacon 6	DBN DEST	11464	578-05 KWT	52/05
11851	Newport Bay Daybeacon 1	DBN DMGD	11464	488-05 KWT	44/05
11851.4	Newport Bay Daybeacon 5	DBD DEST	11464	484-05 KWT	44/05
11851.5	Newport Bay Daybeacon 6	DBN DEST	11464	485-05 KWT	24/04
11851.6	Newport Bay Daybeacon 7	DBN DMGD	11464	486-05	44/05
11851.8	Newport Bay Daybeacon 9	DBN DEST	11464	487-05 KWT	24/04
11851.9	Newport Bay Daybeacon 10	DBN DEST	11464	N/A	24/04
11852.2	Newport Bay Daybeacon 15	DBN DEST	11464	N/A	24/04
11853.3	Newport Bay Auxiliary Channel Daybeacon 4	MISSING	11464	N/A	09/06
11915	Harborage Yacht Club Entrance Light 2	DBN IMCH/FADED	11451	NA	15/06
11917.5	Mariners Club Marina Daybeacon 8	DBD DEST	11463	328-05 KWT	39/05
11945	Key Largo Ocean Resort Light 2	LT EXT	11451	005-06 KWT	03/06
12501.4	Vaca Cut Daybeacon 8	DBN DEST	11453	140-06 KWT	30/06
12865	Yellow Shark Channel Buoy 17	DBN DEST	11449	NA	40/06
13060	Shell Key Channel Daybeacon 18	DBD DEST	11449	315-05 KEY	39/05
13195	Indian Key Channel Daybeacon 12	DBD DEST	11449	NA	40/06
13345	Lignumvitae Channel Daybeacon 15	DBD DMGD	11449	NA	31/06
13355	Caloosa Cove Channel Light 2	LT EXT/DBN DEST	11442	050-06 KWT	11/06
13365	Caloosa Cove Channel Daybeacon 6	DBD DEST	11442	496-05 KWT	44/05
13920	Ramrod Key Channel Daybeacon 1	MISSING	11446	NA	03/06
14067	Summerland Key Daybeacon 6	DBN IMCH	11445	N/A	28/05
14230	Upper Sugarloaf Sound Daybeacon 11	MISSING	11446	148-06 KWT	32/06

14310	Cudjoe Key Daybeacon 11	DBD DEST	11446	161-06 KWT	34/06
14665	Key West Oceanside Marina Daybeacon 1	DBN IMCH	11446	N/A	09/05
14705	Key West Oceanside Marina Daybeacon 9	DBN IMCH	11445	N/A	12/03
14980.2	Key West Mooring Field Light B	LT IMCH	11447	N/A	39/04
15320	Lake Passage Channel Daybeacon 17	DBD DEST	11441	N/A	40/05
16110	NPS Boat Basin South Channel Daybeacon 2	DBN IMCH	11429	1303-04 STP	35/04
16120	NPS Boat Basin South Channel Daybeacon 4	DBN IMCH	11429	1304-04 STP	48/03
16135	NPS Boat Basin West Channel Daybeacon 1	DBN IMCH	11430	1302-04 STP	35/04
16145	NPS Boat Basin West Channel Daybeacon 4	DBN IMCH	11429	1301-04 STP	35/04
16150	NPS Boat Basin West Channel Daybeacon 5	DBN IMCH	11429	1300-04 STP	48/03
16160	NPS Boat Basin West Channel Daybeacon 7	DBN DEST	11429	1299-04 STP	48/03
16665	Blackwater River Daybeacon 56	DBN DEST	11430	NA	13/06
16905	Caxambas Pass Entrance Light C	DBN DEST	11430	NA	44/05
17105	Isles of Capri Daybeacon 2	DBN IMCH	11430	N/A	48/03
17120	Isles of Capri Daybeacon 5	DBN DEST	11430	NA	13/06
17140	Isles of Capri Daybeacon 9	DBN IMCH	11430	0934-05 STP	13/05
17710	Doctors Pass Daybeacon 1A	MISSING	11430	1160-06 STP	36/06
17760	Doctors Pass Daybeacon 12	MISSING	11430	1161-06 STP	36/06
17965	New Pass Lighted Buoy 2	MISSING	11427	182-07 STP	08/07
18875	Mullock Creek Daybeacon 28	MISSING	11427	1505-06 STP	48/06
18995	Alternate Route Channel Daybeacon 3	DBN DEST	11427	N/A	18/03
18995.06	Estero Pointe Channel Daybeacon 12	DBN IMCH	11427	1316-04 STP	35/04
19000	Alternate Route Channel Daybeacon 4	DBN DMGD	11427	NA	13/06
19005	Alternate Route Channel Daybeacon 5	DBN DMGD	11427	NA	13/06
19015	Alternate Route Channel Daybeacon 7	DBN DEST	11427	1319-04 STP	15/04
19025	Alternate Route Channel Daybeacon 9	DBN DEST	11427	N/A	15/04
19030	Alternate Route Channel Daybeacon 10	DBN IMCH	11427	N/A	18/03
19065	Coconut Channel Daybeacon 7	DBN IMCH	11427	N/A	17/04
19080	Coconut Channel Daybeacon 10	DBN DEST	11427	596-04 STP	18/04
19250	Southern Passage Daybeacon 5	DBD DEST	11427	NA	13/06
19270	Southern Passage Daybeacon 9	DBD DEST	11427	NA	13/06
19275	Southern Passage Daybeacon 10	DBN IMCH	11427	N/A	17/04
19280	Southern Passage Daybeacon 11	DBN IMCH	11427	NA	13/06
19300	Southern Passage Daybeacon 15	DBD DEST	11427	NA	51/05
19305	Southern Passage Daybeacon 16	DBN IMCH	11427	1325-04 STP	35/04
19320	Southern Passage Daybeacon 19	DBN IMCH	11427	N/A	35/04
19335	Spring Creek Daybeacon 2	DBD DMGD	11427	NA	13/06
19340	Spring Creek Daybeacon 4	DBN DEST	11427	N/A	28/05
19350	Spring Creek Daybeacon 6	DBN DMGD/DBN IMCH	11427	1001-05 STP	28/05
19360	Spring Creek Daybeacon 8	DBN IMCH/DBD DEST	11427	1002-05 STP	28/05
19365	Spring Creek Daybeacon 9	DBN IMCH	11427	N/A	28/05
19370	Spring Creek Daybeacon 11	DBN DEST	11427	N/A	28/05
19430	Spring Creek Daybeacon 26	DBN IMCH	11427	N/A	28/05
19445	Spring Creek Daybeacon 30	DBN IMCH/DBD DEST	11427	N/A	35/04
19510	Spring Creek Daybeacon 50	DBN DEST	11427	N/A	28/05
20355	Upper Myakka River Daybeacon A	DBN IMCH	11426	N/A	44/04
20450	Ponce De Leon Park Channel Light 2	LT IMCH	11426	N/A	44/04
20460	Ponce De Leon Park Channel Daybeacon 6	DBN DEST	11426	N/A	02/05
20525	Isles Channel Daybeacon 7	DBN IMCH	11426	N/A	02/05
20560	Isles Cross Channel Daybeacon 3	DBN DEST	11426	N/A	02/05

21245	Charlotte Harbor Yacht Club Daybeacon 1	DBN IMCH	11426	N/A	08/04
21250	Charlotte Harbor Yacht Club Daybeacon 2	DBN IMCH	11426	N/A	02/05
21255	Charlotte Harbor Yacht Club Daybeacon 3	DBN IMCH	11426	N/A	08/04
21260	Charlotte Harbor Yacht Club Daybeacon 4	DBN IMCH	11426	N/A	02/05
21265	Charlotte Harbor Yacht Club Daybeacon 5	DBN IMCH	11426	N/A	08/04
21270	Charlotte Harbor Yacht Club Daybeacon 6	DBN IMCH	11426	N/A	02/05
21275	Charlotte Harbor Yacht Club Daybeacon 7	DBN IMCH	11426	N/A	02/05
21280	Charlotte Harbor Yacht Club Daybeacon 8	DBN IMCH	11426	N/A	02/05
21285	Charlotte Harbor Yacht Club Daybeacon 9	DBN IMCH	11426	N/A	08/04
21355	Stump Pass Daybeacon 4	DBN DEST	11425	722-06 STP	22/06
21360	Stump Pass Daybeacon 5	DBN DEST	11425	N/A	22/06
21370	Stump Pass Daybeacon 6	DBN DEST	11425	720-06 STP	22/06
21375	Stump Pass Daybeacon 7	DBN DEST	11425	719-06 STP	22/06
21395	Stump Pass Marina Daybeacon 3	DBN DEST	11425	1669-05 STP	45/05
21400	Stump Pass Marina Daybeacon 4	OFF STA	11425	1670-05 STP	45/05
21405	Stump Pass Marina Daybeacon 5	OFF STA	11425	1671-05 SEC ST	45/05
21410	Stump Pass Marina Daybeacon 6	OFF STA	11425	1672 / 1697 STP	45/05
21415	Stump Pass Marina Light	LT IMCH	11425	N/A	19/03
21456.03	Dona Bay Channel Daybeacon 13	DBN DEST	11425	0874-05 STP	23/05
21456.12	Dona Bay Channel Daybeacon 21	DBN IMCH	11425	0875-05 STP	23/05
21500.1	Big Sarasota Pass Daybeacon 1	DBD DEST	11425	NA	37/05
21505	Big Sarasota Pass Daybeacon 9	DBN DEST	11425	679-06 STP	22/06
21520	Big Sarasota Pass Daybeacon 14	DBN DEST	11425	1267-06 STP	41/06
21567.5	Lido Key Channel Daybeacon 16	DBD DMGD	11425		22/06
21570.2	North Siesta Key Daybeacon 3	DBD DEST	11425	0354-06 STP	11/06
21660	Country Club Shores Daybeacon 2	DBN IMCH	11425	N/A	28/05
21665	Country Club Shores Daybeacon 4	DBN IMCH	11425	N/A	28/05
21670	Country Club Shores Daybeacon 6	DBD DEST	11425	0840-05 STP	23/05
21675	Country Club Shores Daybeacon 8	DBD DMGD	11425		22/06
21680	Country Club Shores Daybeacon 10	DBN IMCH	11425	N/A	28/05
21685	Country Club Shores Daybeacon 12	DBD DEST	11425	N/A	28/05
21690	Country Club Shores Daybeacon 14	DBN DEST	11425	N/A	28/05
21800	Leffis Key Channel Daybeacon 5	DBN IMCH/NUM MSNG/DAMGD	11425	094-07 STP	06/07
21805	Leffis Key Channel Daybeacon 6	DBN DEST	11425	093-07 STP	06/07
21810	Leffis Key Channel Daybeacon 7	DBN IMCH/NUM MSNG/DAMGD	11425	095-07 STP	06/07
21950	Fifty-Ninth Street Boat Ramp Daybeacon 3	DBN DEST	11415	N/A	28/05
22290	Tampa Bay P.O.R.T.S. Monitor Light P	DBD DEST	11412	157-07 STP	08/07
22815.5	MacDill Air Force Base Prohibited Area Daybeacon (24)	DBN DEST	11416	N/A	24/03
23130	Big Bend Channel East Range Front Light	LT EXT	11416	110-07 STP	06/07
23130	Big Bend Channel East Range Front Light	LT EXT	11416	110-07 STP	50/06
23135	Big Bend Channel East Upper Range Rear Light	LT EXT	11400	1031-06 STP	29/06
23795	Weedon Island Channel Entrance Lighted Buoy 1	LT EXT	11416	109-07 STP	06/07
23950.5	Old Tampa Bay Pipeline West Light	LT EXT	11416	NA	13/06
23985	Culbreath Cay Daybeacon 1	DBN DEST	11416	0876-05 STP	13/05
23990	Culbreath Cay Daybeacon 2	DBN DEST	11416	0877-05 STP	13/05
23995	Culbreath Cay Daybeacon 4	DBN DEST	11416	N/A	13/05

24005	Culbreath Cay Daybeacon 6	DBN IMCH	11416	856-04 STP	26/04
24015	Culbreath Cay Daybeacon 8	DBN DEST	11416	857-04 STP	26/04
24040	Bridgeview Channel Daybeacon 1	DBN DEST	11416	N/A	13/05
24050	Bridgeview Channel Daybeacon 3	DBN DMGD	11416	N/A	14/01
24055	Bridgeview Channel Daybeacon 4	DBN IMCH	11416	390-04 STP	12/04
24195	Dana Shores Daybeacon 6	DBN DEST	11416	1461-06 STP	47/06
24250	Dana Shores Daybeacon 22	DBN DMGD	11416	1462-06 STP	47/06
24265	Bay Crest Daybeacon 3	MISSING	11416	1456-06 STP	47/06
24270	Bay Crest Daybeacon 4	DBN DMGD	11416	1457-060 STP	47/06
24280	Bay Crest Daybeacon 6	DBN DMGD	11416	1458-06	47/06
24340	Cabbagehead Bayou Daybeacon 12	DBN DEST		1204-06 STP	38/06
24525	Bahia Beach Daybeacon 9	DBD DEST	11416	054-07 STP	04/07
24575	Bahia Beach Marina Daybeacon 4	MISSING	11416	053-07 STP	04/07
24620	Apollo Beach Jetty Obstruction Daybeacon	DBN DEST	11416	NA	45/06
24625	Apollo Beach Daybeacon 4	DBN DMGD	11416	1463-06 STP	47/06
24653	Symphony Isles Danger Daybeacon	DBN IMCH	11416	1464-06 STP	47/06
25250	Bayou Grande Channel Daybeacon 52	MISSING	11416	045-07 STP	03/07
25430	Bunces Pass Daybeacon 12	HAZ NAV/DBN DEST	11415	1333-06 STP	43/06
25510.1	Dent Channel Daybeacon 2	DBN DEST	11411	0538-06 STP	18/06
25515	Dent's Channel Daybeacon 3	TRLB	11415	1200-05 STP	29/05
25555	South Dent Channel Daybeacon 7	DBN DEST	11411	N/A	24/03
25600.01	Treasure Island North Terminal Groin Obstruction Light	LT EXT	11411	1089-06 STP	33/06
25655	Clearwater Beach Lighted Buoy A	OFF STA	11412	N/A	11/05
25660	Clearwater Beach Lighted Buoy B	OFF STA	11412	N/A	11/05
25665	Clearwater Beach Lighted Buoy C	OFF STA	11412	0936-05 STP	11/05
25670	Clearwater Beach Lighted Buoy D	OFF STA	11412	0935-05 STP	11/05
25675	Clearwater Beach Lighted Buoy E	OFF STA	11412	N/A	11/05
27080	Hudson Creek Daybeacon 18	DBN DEST	11409	NA	18/06
27190	Sea Pines Channel Daybeacon 14	DBN DEST	11409	NA	13/06
28715	Homosassa River Daybeacon 2	DBD DMGD/DBD DEST	11409	1237-06 STP	40/06
28773	Crystal Bay Scallop Platform Light	LT IMCH	11409	1559-06 STP	51/06
28915	Salt River Daybeacon 2	DBN IMCH	11409	NA	13/06
28920	Salt River Daybeacon 3	DBN IMCH	11409	NA	13/06
28925	Salt River Daybeacon 5	DBN IMCH	11409	NA	13/06
28930	Salt River Daybeacon 6	DBN IMCH	11409	NA	13/06
28935	Salt River Daybeacon 7	DBN IMCH	11409	NA	13/06
28940	Salt River Daybeacon 8	DBN DMGD/DBN IMCH	11409	0418-06 STP	13/06
28945	Salt River Daybeacon 9	DBN IMCH	11409	NA	13/06
28950	Salt River Daybeacon 10A	DBN IMCH	11409	NA	13/06
28960	Florida Power Corporation Channel Light 3	LT EXT	11408	1328-06 STP	42/06
28965	Florida Power Corporation Channel Light 4	DBN IMCH	11408	1284-06 STP	38/06
28975	Florida Power Corporation Channel Light 6	LT IMCH	11408	1285-06 STP	42/06
28985	Florida Power Corporation Channel Light 8	LT IMCH	11408	1286-06 STP	42/06
28990	Florida Power Corporation Channel Light 9	LT IMCH	11408	1287-06 STP	42/06
28995	Florida Power Corporation Channel Light 10	LT EXT	11408	1288-06 STP	38/06
29000	Florida Power Corporation Channel Light 12	LT IMCH	11408	1289-06 STP	42/06
29005	Florida Power Corporation Channel Light 13	LT IMCH	11408	1290-06 STP	42/06
29015	Florida Power Corporation Channel Light 16	LT IMCH	11408	1292-06 STP	42/06

29020	Florida Power Corporation Channel Light 17	LT IMCH	11408	1293-06 STP	42/06
29025	Florida Power Corporation Channel Light 18	LT IMCH	11408	1294-06 STP	42/06
29040	Florida Power Corporation Channel Light 23	LT IMCH	11408	1297-06 STP	42/06
29045	Florida Power Corporation Channel Light 25	LT IMCH	11408	1298-06 STP	42/06
29050	Florida Power Corporation Channel Light 26	LT IMCH	11408	1299-06 STP	42/06
29055	Florida Power Corporation Channel Light 27	LT IMCH	11408	1300-06 STP	42/06
29065	Florida Power Corporation Channel Light 29	LT IMCH	11408	1301-06 STP	42/06
29070	Florida Power Corporation Channel Light 31	LT IMCH	11408	1302-06 STP	42/06
29085	Florida Power Corporation Channel Light 34	LT EXT	11408	1304-06 STP	42/06
29090	Florida Power Corporation Channel Light 35	LT IMCH	11408	1305-06 STP	42/06
29095	Florida Power Corporation Channel Light 36	LT IMCH	11408	1306-06 STP	42/06
29100	Florida Power Corporation Channel Light 37	LT EXT	11408	1307-06 STP	38/06
29120	Florida Power Corporation Channel Light 41	LT IMCH	11408	NA	42/06
29135	Florida Power Corporation Channel Light 44	LT IMCH	11408	1310-06 STP	42/06
29140	Florida Power Corporation Channel Light 45	LT EXT	11408	1311-06 STP	38/06
29160	Florida Power Corporation Channel Light 50	LT IMCH	11408	1560-06 STP	51/06
29165	Florida Power Corporation Channel Light 51	LT IMCH	11408	1561-06 STP	51/06
29170	Florida Power Corporation Channel Light 52	LT IMCH	11408	1562-06 STP	51/06
30085	Suwannee River Alligator Pass Light 2	DBD DEST	11408	NA	17/06
30170	Suwannee River McGriff Pass Daybeacon 1	LT EXT	11408	NA	13/06
30270	Salt Creek Daybeacon 2	HAZ NAV/DBN DEST	11408	NA	13/06
30280	Salt Creek Daybeacon 5	DBD DMGD	11408	NA	13/06
30315	Salt Creek Daybeacon 17	HAZ NAV/DBN DEST	11408	1373-05 STP	35/05
30330	Salt Creek Daybeacon 21	DBN DMGD	11408	NA	13/06
30690	Cedar Island Daybeacon 1	DBN DMGD	11407	506-01 STP	28/01
30695	Cedar Island Daybeacon 2	DBN DMGD	11407	507-01 STP	28/01
30825	TMT Outer Dolphin Obstruction Light	LT EXT	25670	319-05 SJN	47/05
30830	TMT Middle Dolphin Obstruction Light	LT EXT	25670	320-05 SJN	47/05
31230	Sea Lovers Pier Buoy West Light	LT EXT	25667	N/A	41/04
31335.1	Puerto del Ray North Channel Lighted Buoy 6	LT EXT	25663	231-06 SJN	37/06
31527	Caballo Blanco Light	LT EXT	25664	348-06 SJN	02/07
31535	Sonda de Vieques Obstruction Lighted Buoy LAE	MISSING	25664	N/A	16/97
31915	Aguirre Power Plant Lighted Buoy 6	LT EXT	25687	096-06 SJN	16/06
32420	Redhook Bay Buoy 1	BUOY DMGD	25647	365-02 GAN	45/02
32425	Redhook Bay Buoy 2	OFF STA	25647	N/A	45/04
32430	Redhook Bay Buoy 3	DBN DMGD	25647	NA	19/06
32440	Redhook Bay Junction Buoy P	OFF STA	25647	N/A	45/04
32450	Redhook Bay South Channel Buoy 2	OFF STA	25647	N/A	45/04
32455	Redhook Bay Buoy 5	MISSING	25647	NA	19/06
32460	Redhook Bay Buoy 6	MISSING	25647	N/A	45/04
32780	Cruz Bay Buoy 1	MISSING	25647	359-02 GAN	45/02
32805	Cruz Creek Channel Buoy 1C	MISSING	25647	360-02 GAN	45/02

32810	Cruz Creek Channel Buoy 2C	MISSING	25647	NA	19/06
33200	Lime Tree Bay Port Basin Light 15	LT EXT	25641	067-06 SJN	13/06
33230	Krause Lagoon Channel Lighted Buoy 4A	LT EXT	25641	NA	08/07
33315	Krause Lagoon Cross Channel Lighted Buoy 1	MISSING	25641	065-06 SJN	13/06
34745	Johns Island Dock Obstruction Light	LT EXT/DBN DEST	11518	N/A	27/04
35425	Marsh Harbor Marina Daybeacon 4	DBD DMGD	11518	N/A	51/04
35585	Trenchards Inlet Tide Gauge Daybeacon	DBN IMCH	11516	N/A	03/04
35590	Station Creek West Tide Gauge Daybeacon	DBN DEST	11516	N/A	03/04
35630	Ribaut Island Dock Light G	LT EXT	11507	N/A	04/05
36232	Delegal Creek Channel Buoy 3	MISSING	11507	N/A	28/05
36233	Delegal Creek Channel Buoy 4	MISSING	11507	N/A	28/05
36235	Delegal Creek Channel Buoy 5	BUOY DMGD	11507	N/A	28/05
38843.6	Vilano Marina North Channel Daybeacon 4	DBN IMCH	11485	N/A	06/04
42290	Diamond 99 Marina Daybeacon 1	DBD DEST	11485	NA	14/06
42300	Diamond 99 Marina Daybeacon 3	DBD DEST	11472	NA	14/06
42310	Diamond 99 Marina Daybeacon 5	DBD DEST	11472	NA	14/06
42490.1	Manatee Cove Marina Daybeacon 1	DBN DEST	11476	N/A	31/04
42490.3	Manatee Cove Marina Daybeacon 3	DBN IMCH	11476	N/A	02/05
42491	Manatee Cove Marina Range Front Light	LT EXT	11476	N/A	19/04
42492	Manatee Cove Marina Range Rear Light	LT EXT/DBN DEST	11476	N/A	44/04
42830	Central Avenue Entrance Channel Light 2	LT EXT	11476	480-05 JAX	49/05
43030	Kelly Park Channel Light 1	LT EXT	11476	N/A	16/04
43045	Kelly Park Channel Daybeacon 4	DBN DEST	11476	NA	13/06
43055	Kelly Park Channel Daybeacon 7	DBN DEST	11476	NA	13/06
43115	Intracoastal Marina Channel Daybeacon 1	DBN IMCH	11476	N/A	07/05
43120	Intracoastal Marina Channel Daybeacon 2	DBN IMCH	11476	N/A	07/05
43125	Intracoastal Marina Channel Daybeacon 3	DBN DEST	11476	N/A	14/05
43135	Intracoastal Marina Channel Daybeacon 5	DBN IMCH	11476	N/A	14/05
43140	Intracoastal Marina Channel Daybeacon 6	DBN IMCH	11476	N/A	14/05
43145	Intracoastal Marina Channel Daybeacon 7	DBN IMCH	11476	N/A	14/05
43160	Intracoastal Marina Channel Daybeacon 10	DBN IMCH	11476	N/A	14/05
43350	Tucker Channel Daybeacon 1	DBN DMGD	11472	N/A	19/04
43355	Tucker Channel Daybeacon 2	DBN DMGD	11472	N/A	19/04
43575	Coconut Point Daybeacon 1	DBN IMCH	11472	N/A	44/04
43580	Coconut Point Daybeacon 2	DBN IMCH	11472	N/A	44/04
43585	Coconut Point Daybeacon 3	DBN IMCH	11472	N/A	11/05
43590	Coconut Point Daybeacon 4	DBN IMCH	11472	N/A	11/05
43595	Coconut Point Daybeacon 5	DBN IMCH	11472	N/A	11/05
43600	Coconut Point Daybeacon 6	DBN IMCH	11472	N/A	44/04
43685.2	Channel 68 Marina Daybeacon 2	DBN DEST	11472	N/A	10/03
43700	River Run Daybeacon 1	DBN IMCH/DBD DEST	11472	N/A	17/05
43710	River Run Daybeacon 3	DBN IMCH/DBD DEST	11472	N/A	17/05
43720	River Run Daybeacon 5	DBN IMCH	11472	N/A	21/05
44005	Grand Harbor Marina Daybeacon 8	DBN IMCH	11472	N/A	28/05
44025	Grand Harbor Marina Daybeacon 12	DBN IMCH	11472	N/A	28/05
44035	Grand Harbor Marina Daybeacon 14	DBN DEST	11472	N/A	28/05
44045	Grand Harbor Marina Daybeacon 16	DBN IMCH	11472	N/A	28/05
44065	Bermuda Bay Daybeacon 1	DBN DEST/DBN IMCH	11472	N/A	08/04
44070	Bermuda Bay Daybeacon 2	DBN IMCH	11472	N/A	28/05

44075	Bermuda Bay Daybeacon 3	DBN IMCH	11472	N/A	28/05
44080	Bermuda Bay Daybeacon 4	DBN DEST	11472	N/A	29/05
44085	Bermuda Bay Daybeacon 5	DBN IMCH	11472	N/A	10/03
44090	Bermuda Bay Daybeacon 6	DBN DEST	11472	N/A	28/05
44095	Bermuda Bay Daybeacon 7	DBN IMCH	11472	N/A	28/05
44105	Bermuda Bay Daybeacon 9	DBN IMCH	11472	N/A	28/05
44110	Bermuda Bay Daybeacon 10	DBN DEST/DBN IMCH	11472	N/A	08/04
44115	Bermuda Bay Daybeacon 11	DBN IMCH	11472	N/A	10/03
44120	Bermuda Bay Daybeacon 12	DBN IMCH	11472	N/A	08/04
44845	Linkport Channel Daybeacon 1	DBN DEST	11472	NA	36/06
44848	Linkport Channel Daybeacon 2	DBD DEST	11472	NA	36/06
44850	Linkport Channel Daybeacon 3	DBD DEST	11472	NA	36/06
44855	Linkport Channel Daybeacon 4	DBD DEST	11472	NA	38/06
44860	Linkport Channel Daybeacon 5	DBN DEST	11472	NA	38/06
44870	Linkport Channel Daybeacon 7	MISSING	11472	NA	38/06
44875	Linkport Channel Daybeacon 8	DBD DEST	11472	NA	38/06
44980	Village Marina Daybeacon 1	DBN DEST	11476	N/A	27/04
45540	Fairwinds Cove Daybeacon 7	DBN IMCH	11476	N/A	15/04
45560	Fairwinds Cove Daybeacon 12	DBN IMCH	11476	N/A	15/04
45585	Rigels Cove Channel Daybeacon 1	DBN IMCH	11472	N/A	15/04
45590	Rigels Cove Channel Daybeacon 2	DBN IMCH	11472	N/A	15/04
45595	Rigels Cove Channel Daybeacon 3	DBN IMCH	11472	N/A	15/04
45600	Rigels Cove Channel Daybeacon 4	DBN IMCH	11472	N/A	15/04
45605	Rigels Cove Channel Daybeacon 5	DBN IMCH	11472	N/A	15/04
45610	Rigels Cove Channel Daybeacon 6	DBN IMCH	11472	N/A	15/04
45615	Rigels Cove Channel Daybeacon 7	DBN DEST	11472	N/A	15/04
45620	Rigels Cove Channel Daybeacon 8	DBN IMCH	11472	N/A	15/04
45625	Rigels Cove Channel Daybeacon 9	DBN IMCH	11472	N/A	15/04
45630	Rigels Cove Channel Daybeacon 10	DBN IMCH	11472	N/A	15/04
45980	Miles Grant Daybeacon 2	DBN IMCH	11476	N/A	21/04
46005	St Lucie Inlet State Park Channel Daybeacon 1	DBD DEST	11476	646-05 MIA	45/05
46010	St Lucie Inlet State Park Channel Daybeacon 2	DBD DEST	11476	647-05 MIA	45/05
46625	New Port Cove Marine Ctr Daybeacon 3	DBN DEST	11472	N/A	28/05
46630	New Port Cove Marine Ctr Daybeacon 4	DBN DEST	11472	N/A	28/05
46640	New Port Cove Marine Ctr Daybeacon 6	DBN DEST	11472	N/A	28/05
46650	New Port Cove Marine Ctr Daybeacon 8	DBN DEST	11472	NA	51/05
46855	West Palm Beach Daybeacon 1	DBN IMCH	11476	N/A	28/05
46865	West Palm Beach Daybeacon 3	DBN DEST	11476	N/A	28/05
47640	Golden Gates Marina South Obstruction Light	DBN DEST	11467	499-05 MIA	37/05
47645	Williams Island Daybeacon 1	DBN DEST	11467	286-03 MIA	22/03
47850	Keystone Point Channel Daybeacon 4	DBN DEST	11467	307-06 MIA	24/06
47880	Keystone Point Channel Daybeacon 16	DBN DEST	11467	308-06	24/06
48250	Miami Shores Channel Daybeacon 8	MISSING	11467	075-06	05/06
48500	Cloughton Island North Obstruction Daybeacon	DBN DMGD	11465	330-06 MIA	27/06
48505	Cloughton Island Middle Obstruction Daybeacon	DBN DEST	11465	637-04 MIA	51/04
48570	Villa Regina Daybeacon 5	DBN DEST	11465	587-03 MIA	49/03
48620	Deering Channel Daybeacon 3	DBN DEST	11465	437-06 MIA	38/06
48640	Deering Channel Daybeacon 7	MISSING	11465	438-06 MIA	38/06
48845	Crandon Park Marina Channel Light 14	DBN DEST	11467	540-6 652-6 MI	43/06
49040	Dinner Key Marina South Channel Light 13	LT EXT	11465	406-06 MIA	35/06
49085	Key Biscayne Yacht Club Light 4	LT IMCH	11465	597-02 MIA	49/02

49160	Four Way Channel Directional Daybeacon	DBN DEST	11465	N/A	39/97
49190	Four Way Channel Daybeacon 8	DBN DEST	11465	065-03 MIA	05/03
49225	Hughes Cove East Obstruction Daybeacon	DBN DMGD	11465	N/A	24/98
49245	Entrada Channel Daybeacon 3	DBN DEST	11465	340-04 MIA	29/04
49340	Gables Estates Light 2	DBD DEST	11465	NA	17/06
49345	Gables Estates Daybeacon 2A	DBD DEST	11465	NA	17/06
49350	Gables Estates Daybeacon 3	DBD DEST	11465	NA	17/06
49360	Gables Estates Daybeacon 5	DBD DEST	11465	NA	17/06
49678.5	Boca Chita Channel Buoy 4	MISSING	11465	NA	42/06
49679.5	Boca Chita Channel Buoy 6	MISSING	11465	NA	42/06
49790	Black Point Channel Daybeacon 12	DBN IMCH/NUM MSNG/DAMGD	11464	NA	42/06
49805	Black Point Channel Daybeacon 15	DBN DEST	11464	NA	42/06
49815	Black Point Channel Daybeacon 17	MISSING	11464	NA	42/06
49865	Convoy Point Light 1	LT EXT	11467	014-07 MIA	47/06
49870	Convoy Point Light 2	LT EXT	11467	015-07 MIA	47/06
49955	Turkey Point Channel Light 2	LT EXT/DBD DEST	11464	182-06 MIA	15/06
49955	Turkey Point Channel Light 2	LT EXT/DBN DEST	11464	182-06 MIA	35/05
49975	Turkey Point Channel Buoy 4A	MISSING	11464	039-07 MIA	05/07
49975	Turkey Point Channel Buoy 4A	MISSING	11464	461-05 MIA	38/05
49995	Turkey Point Channel Buoy 8	LT EXT	11464	520-06 MIA	41/06
50160	Grayvik Daybeacon 1	DBN IMCH	11451	N/A	28/05
50170	Grayvik Daybeacon 3	DBN IMCH/FADED	11451	NA	17/06
50175	Grayvik Daybeacon 4	DBN DEST	11451	NA	17/06
50295	The Moorings Daybeacon 2	DBN DEST	11451	NA	19/06
50300	The Moorings Daybeacon 3	DBD DEST	11451	NA	19/06
50305	The Moorings Daybeacon 4	DBD DEST	11451		19/06
50505.05	Hammer Point Harbor Obstruction Daybeacon C	MISSING	11463	NA	09/06
50505.06	Hammer Point Harbor Obstruction Daybeacon D	MISSING	11463	NA	09/06
50506.02	Hammer Point Harbor Obstruction Daybeacon J	DBN DMGD	11463	NA	09/06
50506.08	Hammer Point Harbor Obstruction Daybeacon P	MISSING	11463	N/A	09/06
50506.09	Hammer Point Harbor Obstruction Daybeacon Q	MISSING	11463	NA	09/06
50905	St. Lucie River (North Fork) Daybeacon 11	DBN IMCH	11428	N/A	04/03
50915	St. Lucie River (North Fork) Daybeacon 13	DBN DMGD/DBD DEST	11428	723-05 MIA	47/05
50955	St. Lucie River (North Fork) Daybeacon 25	DBD DEST	11428	NA	13/06
51975	Buckhead Ridge Canal Light BR	LT IMCH	11428	N/A	53/02
52385	Admiralty Yacht Club Daybeacon 8	DBN IMCH	11428	1716-04 STP	43/04
52420	Indian Creek Daybeacon 1	DBN IMCH	11428	1717-04 STP	43/04
52435	Indian Creek Daybeacon 4	DBN IMCH	11428	N/A	39/04
52440	Indian Creek Daybeacon 5	DBN IMCH	11428	N/A	39/04
52445	Indian Creek Daybeacon 6	DBN IMCH	11428	N/A	39/04
52450	Indian Creek Daybeacon 7	DBN IMCH	11428	1718-04 STP	39/04
52455	Indian Creek Daybeacon 8	DBN IMCH	11428	N/A	39/04
52460	Indian Creek Daybeacon 9	DBN IMCH	11428	N/A	39/04
52465	Indian Creek Daybeacon 10	DBN IMCH	11428	N/A	39/04
52660	Marinatown Daybeacon 2	DBN DEST	11428	0559-06 STP	42/04
52685	Marinatown Daybeacon 7	DBN IMCH	11428	N/A	39/04
52745	Marinatown Daybeacon 19	DBN IMCH/DBD DEST	11428	0564-06 STP	39/04
52775	Marinatown Daybeacon 25	DBN DEST	11428	0566-06 STP	39/04
53515	McGregor Isles Daybeacon 5	MISSING	11427	0569-06 STP	18/06

53565	Harney Point Rim Channel Daybeacon 8	DBN DEST	11427	N/A	27/04
53590	Harney Point Rim Channel Daybeacon 14	DBD DMGD	11427	NA	14/06
54135	Redfish Point Rim Channel Light 20	LT EXT	11427	NA	14/06
54195	Peppertree Pointe E Obstruction Daybeacon	DBD DMGD	11427	0926-06 STP	27/06
54210	Peppertree Pointe Daybeacon 3	DBD DEST	11427	0925-06 STP	14/06
54220	Peppertree Pointe Daybeacon 5	DBD DEST	11427	0924-06 STP	14/06
54225	Peppertree Pointe Daybeacon 6	DBD DMGD	11427	0923-06 STP	27/06
54230	Peppertree Pointe Daybeacon 7	DBD DMGD	11427	0922-06 STP	27/06
54235	Peppertree Pointe Daybeacon 8	DBD DMGD	11427	0921-06 STP	27/06
54240	Peppertree Pointe Daybeacon 9	DBD DMGD	11427	0920-06 STP	27/06
54560	Saint Charles Harbour Daybeacon 15	DBD DMGD	11427	0939-06 STP	27/06
54590	Saint Charles Harbour Daybeacon 21	DBD DMGD	11427	0937-06 STP	27/06
54730	Shell Point Village Daybeacon 5	DBN IMCH	11427	N/A	28/05
54930	Manatee Bay Property Channel Daybeacon 1	DBN IMCH/STRUCT DEFAC	11427	0940-06 STP	27/06
55315	Paradise Canal Daybeacon 2	DBD DEST	11427	0929-06 STP	14/06
55320	Paradise Canal Daybeacon 3	DBD DEST	11427	0930-06 STP	14/06
55325	Paradise Canal Daybeacon 4	DBD DEST	11427	0931-06 STP	14/06
55815	South Seas Plantation Daybeacon 8	DBD DEST	11427	0935-06 STP	27/06
55880	South Seas Plantation Daybeacon 21	DBD DEST	11427	0936-06 STP	10/06
56778	Placida Pier Northeast Obstruction Light	LT EXT	11425	990-02 STP	33/02
56778.5	Placida Pier Southeast Obstruction Light	LT EXT	11425	990-02 STP	33/02
57295	Daughtrey Landing Daybeacon 3	DBN DEST	11425	724-06 STP	21/05
57358.3	Gottfried Creek Daybeacon 22	DBN DEST	11425	0968-06 STP	17/04
57359.7	Englewood Channel Daybeacon 12	DBN IMCH	11425	N/A	21/03
57440	Indian Mound Pk Daybeacon 2	DBN DEST	11425	0969-06 STP	28/05
57470	Royal Palm Marina Buoy 1	BUOY DMGD	11425	0943-06 STP	21/04
57475	Royal Palm Marina Buoy 2	MISSING	11425	0949-06 STP	28/05
57480	Royal Palm Marina Buoy 4	MISSING	11425	0948-06 STP	28/05
57485	Royal Palm Marina Buoy 5	MISSING	11425	N/A	28/05
57490	Royal Palm Marina Buoy 6	BUOY DMGD	11425	0945-06 STP	28/05
57495	Royal Palm Marina Buoy 8	MISSING	11425	0944-06 STP	28/05
57500	Royal Palm Marina Buoy 10	ADRIFT	11425	0967-06 STP	28/05
57505	Royal Palm Marina Buoy 11	MISSING	11425	0966-06 STP	28/05
57510	Royal Palm Marina Buoy 12	BUOY DMGD	11425	0965-06 STP	28/05
57515	Royal Palm Marina Buoy 13	BUOY DMGD	11425	0964-06 STP	28/05
57520	Royal Palm Marina Buoy 14	BUOY DMGD	11425	0963-06 STP	28/05
57525	Royal Palm Marina Buoy 15	MISSING	11425	0962-06 STP	28/05
57530	Royal Palm Marina Buoy 16	MISSING	11425	0960-06 STP	28/05
57535	Royal Palm Marina Buoy 18	BUOY DMGD	11425	0961-06 STP	28/05
57570	Lemon Bay Daybeacon 3	DBD DMGD	11425	714-06 STP	22/06
57619.5	Forked Creek Southeast Obstruction Daybeacon	DBN DEST	11425	715-06 STP	28/05
58175	Midnight Pass Lagoon Daybeacon 2	DBN IMCH	11425	N/A	13/05
58205.4	Midnight Pass Daybeacon 15	DBN DEST	11425	1893-05 STP	51/05
58530	Sarasota Bay Artificial Reef Daybeacon E	DBN DEST	11425	N/A	10/04
58540	Tony Saprito Fishing Pier South Light	LT EXT	11425	N/A	28/05
58545	Tony Saprito Fishing Pier North Light	LT EXT	11425	N/A	28/05
58645	Bay Isles South Channel Daybeacon 2	DBN IMCH	11425	NA	22/06
58655	Bay Isles South Channel Daybeacon 6	DBN IMCH	11425	0847-05 STP	23/05
58665	Bay Isles South Channel Daybeacon 10	DBN IMCH	11425	NA	22/06
58667.35	Bay Isles Perimeter Channel Daybeacon 12	DBN DMGD	11425	699-06 STP	28/05
58667.6	Bay Isles Perimeter Channel Daybeacon 20	DBN IMCH/STRUCT DEFAC	11425	697-06 STP	22/06

58667.65	Bay Isles Perimeter Channel Daybeacon 22	DBN IMCH/STRUCT DEFAC	11425	698-06	22/06
58680	Longboat Key Moorings Light 1	LT EXT	11425	0576-06 STP	18/06
58685	Longboat Key Moorings Light 2	MISSING	11425	0578 / 706-06	28/05
58690	Longboat Key Moorings Daybeacon 3	DBN DEST	11425	N/A	17/04
58710	Longboat Key Moorings Daybeacon 7	DBD DEST	11425	705-06 STP	22/06
58715	Longboat Key Moorings Daybeacon 8	DBD DEST	11425	704-06 STP	22/06
58725	Longboat Key Moorings Daybeacon 10	DBN IMCH	11425	N/A	18/05
58730	Longboat Key Moorings Daybeacon 11	DBN IMCH	11425	N/A	18/05
58740	Sarasota Bay Obstruction Daybeacon	DBN IMCH	11425	703-06 STP	39/04
59030	Longboat Harbor Channel Daybeacon 11	DBD DMGD	11425	696-06 STP	22/06
59145	Longboat Harbor North Marina Daybeacon 6	DBD DEST	11425	729-06 STP	22/06
59245	Buccaneer Inn Daybeacon 10	DBN DEST	11425	698-06 STP	22/06
59265	Buccaneer Inn Daybeacon 14	DBD DMGD	11425	688-06 STP	22/06
59270	Buccaneer Inn Daybeacon 16	DBD DMGD	11425	687-06 STP	22/06
59280	Buccaneer Inn Daybeacon 18	DBN IMCH	11425	0982-06 STP	21/05
59305	Buccaneer Inn Daybeacon 26	DBN DMGD	11425	0981-06 STP	23/05
59380	Coral Shores Channel Daybeacon 4	DBN IMCH/NUM MSNG/DAMGD	11425	096-07 STP	06/07
59430	Coral Shores Channel Daybeacon 14	DBN IMCH/NUM MSNG/DAMGD	11425	098-07 STP	06/07
59440	Coral Shores Channel Daybeacon 16	DBN IMCH/NUM MSNG/DAMGD	11425	099-07 STP	06/07
59475	Coral Shores Channel Daybeacon 23	DBN IMCH/NUM MSNG/DAMGD	11425	100-07 STP	06/07
59485	Coral Shores Channel Daybeacon 25	DBN IMCH	11425	101-07 STP	28/05
59510	Coral Shores Channel Daybeacon 30	DBN IMCH	11425	0975-06 STP	27/06
59540	Mt Vernon & Coral Shores Daybeacon 2N	DBN IMCH	11425	N/A	28/05
59650	Cove Sound Moorings Daybeacon 1	DBD DEST	11425	0915-06 STP	27/06
59655	Cove Sound Moorings Daybeacon 2	DBD DEST	11425	0916-06 STP	27/06
59657	Cove Sound Moorings Channel Daybeacon 3	DBD DEST	11425	0941-06 STP	27/06
59657.5	Cove Sound Moorings Channel Daybeacon 4	DBD DEST	11425	0942-06 STP	27/06
59660	Palma Sola Bay Channel Daybeacon 7	DBN IMCH	11425	N/A	18/03
59730	Perico Bayou Channel Daybeacon 12	DBN IMCH	11415	N/A	19/04
59745	Perico Bayou Channel Daybeacon 14A	DBN DMGD	11415	N/A	19/04
59815	Palma Sola Bay Channel Daybeacon 9	DBN DEST	11425	0283-06 STP	09/06
59860	Palma Sola Bay Channel Daybeacon 18	DBD DEST	11425	0914-06 STP	27/06
60010	Kingfish Boat Ramp Daybeacon 2	DBD DMGD	11415	0416-06 STP	14/06
60020	Kingfish Boat Ramp Daybeacon 5	DBN DMGD	11415	0599-06 STP	14/06
60025	Kingfish Boat Ramp Daybeacon 6	DBD DEST	11415	1562-04 834-06	39/04
60030	Kingfish Boat Ramp Daybeacon 7	DBD DMGD	11415	0598-06 STP	14/06
60035	Kingfish Boat Ramp Daybeacon 8	DBD DEST	11425	0412-06 STP	14/06
60045	Kingfish Boat Ramp Daybeacon 10	DBD DEST	11415	0413-06 STP	14/06
60050	Kingfish Boat Ramp Daybeacon 11	DBD DEST	11415	0414-06 STP	14/06
60055	Kingfish Boat Ramp Daybeacon 12	DBN IMCH	11415	N/A	21/03
60190	Anna Maria Channel Daybeacon 1	DBD DMGD	11415	0539-06 STP	17/06
60245	Anna Maria Channel Daybeacon 12	DBN IMCH	11415	0910-06 STP	05/05
60250	Anna Maria Channel Shoal Daybeacon A	DBN IMCH	11415	N/A	05/05
60640	Bayway Isles Channel Daybeacon 5	DBN IMCH	11411	0940-05 STP	13/05
60670	Bayway Isles Channel Daybeacon 14	DBN IMCH	11411	N/A	13/05
61165	Jungle Beach Daybeacon 1	DBD DMGD	11411	1278-06 STP	42/06
61190	Jungle Beach Daybeacon 6	DBN DEST		1279-06 STP	42/06
62245	Tarpon Cove Daybeacon 20	DBD DMGD	11411	NA	17/06
	Ribaut Island Dock Light A	LT EXT	11507	N/A	04/05
	Ribaut Island Dock Light C	LT EXT	11507	N/A	04/05
	Upper Cooper River Daybeacon 19	DBN DEST	11527	186-05 CHA	23/05

DISCREPANCIES (PRIVATE AIDS) CORRECTED

LLNR	Aid Name	Status	Chart No.	BNM Ref.	LNM St	LNM End
18040	Punta Rassa Boat Ramp Channel Daybeacon 1	WATCHING PROPERLY	11427	N/A	04/07	08/07

PLATFORM DISCREPANCIES

Name	Status	Position	BNM Ref.	LNM St	LNM End
None					

PLATFORM DISCREPANCIES CORRECTED

Name	Status	Position	BNM Ref.	LNM St	LNM End
None					

SECTION III - TEMPORARY CHANGES and TEMPORARY CHANGES CORRECTED

This section contains temporary changes and corrections to Aids to Navigation for this edition. When charted aids are temporarily relocated for dredging, testing, evaluation, or marking an obstruction, a temporary correction shall be listed in Section IV giving the new position.

TEMPORARY CHANGES

LLNR	Aid Name	Status	Chart No.	BNM Ref.	LNM St	LNM End
625	Cape Canaveral Light	DISCONTINUED	11481	015-06 Jax	03/06	
4570	Tybee Range Lighted Buoy 6	RELOCATED FOR DREDGING	11505	011-07 CHA	03/07	
4580	Bloody Point Range Lighted Bell Buoy 8	RELOCATED FOR DREDGING	11505	017-07 CHA	03/07	
4600	Bloody Point Range Lighted Buoy 10	RELOCATED FOR DREDGING	11505	013-07 CHA	03/07	
4605	Bloody Point Range Lighted Buoy 11	RELOCATED FOR DREDGING	11505	014-07 CHA	03/07	
4615	Bloody Point Range Lighted Buoy 13	RELOCATED FOR DREDGING	11505	015-07 CHA	03/07	
4640	Jones Island Range Lighted Bell Buoy 17	RELOCATED FOR DREDGING	11505	16-07 CHA	03/07	
4730	Tybee Knoll Cut Range Lighted Buoy 20	RELOCATED FOR DREDGING	11505	017-07 CHA	03/07	
4735	Tybee Knoll Cut Range Lighted Buoy 21	RELOCATED FOR DREDGING	11505	10-07 CHA	03/07	
6220	Brunswick Point Cut Lighted Buoy 26	RELOCATED FOR DREDGING	11489	N/A	12/06	
6225	Brunswick Point Cut Lighted Buoy 27	RELOCATED FOR DREDGING	11489	N/A	12/06	
22500	Tampa Bay Cut B Channel Lighted Buoy 6B	RELOCATED FOR DREDGING	11416	1801-04 STP	44/04	
22515	Port Manatee Channel Lighted Buoy 1	RELOCATED FOR DREDGING	11415	N/A	02/06	
22520	Port Manatee Channel Lighted Buoy 2	RELOCATED FOR DREDGING	11415	016-06 STP	02/06	
22530	Port Manatee Channel Lighted Buoy 3	RELOCATED FOR DREDGING	11415	1977-04 STP	48/04	
22550	Port Manatee Channel Light 7	RELOCATED FOR DREDGING	11415	021-06 STP	02/06	
23495	Hillsborough Cut C Channel Buoy 32	RELOCATED FOR DREDGING	11416	117-07 STP	06/07	14/07
23600	Port Sutton Channel Lighted Buoy 5	RELOCATED FOR DREDGING	11416	113-07 STP	06/07	14/07
31160	Las Cucarachas Light	DISCONTINUED	25667	330-06 GAN	52/06	

TEMPORARY CHANGES CORRECTED

LLNR	Aid Name	Status	Chart No.	BNM Ref.	LNM St	LNM End
None						

PLATFORM TEMPORARY CHANGES

Name	Status	Position	BNM Ref.	LNM St	LNM End
None					

PLATFORM TEMPORARY CHANGES CORRECTED

Name	Status	Position	BNM Ref.	LNM St	LNM End
None					

SECTION IV - CHART CORRECTIONS

This section contains corrections to federally and privately maintained Aids to Navigation, as well as NOS corrections.						
This section contains corrective actions affecting chart(s). Corrections appear numerically by chart number, and pertain to that chart only. It is up to the mariner to decide which chart(s) are to be corrected. The following example explains individual elements of a typical chart correction.						
Chart Number	Chart Edition	Edition Date	Last Local Notice to Mariners	Horizontal Datum Reference	Source of Correction	Current Local Notice to Mariners
12327	91st Ed.	19-APR-97	Last LNM: 26/97	NAD 83		27/97
Chart Title: NY-NJ-NEW YORK HARBOR - RARITAN RIVER						
Main Panel 2245 NEW YORK HARBOR					CGD01	
(Temp)	ADD	NATIONAL DOCK CHANNEL BUOY 3			at 40-41-09.001N	074-02-48.001W
		Green can				
	Corrective Action	Object of Corrective Action				Position
(Temp) indicates that the chart correction action is temporary in nature. Courses and bearings are given in degrees clockwise from 000 true. Bearings of light sectors are toward the light from seaward. The nominal range of lights is expressed in nautical miles (NM) unless otherwise noted.						

1113	A	28th Ed.	01-JUL-05	Last LNM: 28/06	NAD 83	08/07
ChartTitle: Havana to Tampa Bay (Oil and Gas Leasing Areas)						
Main Panel 2993 LEASE BLOCK FOR HAVANA TO TAMPA BAY. Page/Side: N/A						
	ADD	Research Natural Area PT A 1 OF 3; Chart No. 1: N22 RESEARCH NATURAL AREA (protected area: 36 CFR part 7) (NOS NW-13814)			NOS 24-43-32.040N	082-51-00.000W
	ADD	Research Natural Area PT A 2 OF 3; Chart No. 1: N22 RESEARCH NATURAL AREA (protected area: 36 CFR part 7) (NOS NW-13814)			NOS 24-36-00.000N	082-51-00.000W
	ADD	Research Natural Area PT A 3 OF 3; Chart No. 1: N22 RESEARCH NATURAL AREA (protected area: 36 CFR part 7) (NOS NW-13814)			NOS 24-36-00.000N	082-58-00.000W
11006		32nd Ed.	01-AUG-05	Last LNM: 06/07	NAD 83	08/07
ChartTitle: Gulf Coast - Key West to Mississippi River						
Main Panel 44 KEY WEST TO THE MISSISSIPPI RIVER. Page/Side: N/A						
	ADD	Research Natural Area PT B 1 OF 3; Chart No. 1: N22 RESEARCH NATURAL AREA (protected area: 36 CFR part 7) (NOS NW-13814)			NOS 24-43-32.040N	082-51-00.000W
	ADD	Research Natural Area PT B 2 OF 3; Chart No. 1: N22 RESEARCH NATURAL AREA (protected area: 36 CFR part 7) (NOS NW-13814)			NOS 24-36-00.000N	082-51-00.000W
	ADD	Research Natural Area PT B 3 OF 3; Chart No. 1: N22 RESEARCH NATURAL AREA (protected area: 36 CFR part 7) (NOS NW-13814)			NOS 24-36-00.000N	082-58-00.000W
11013		46th Ed.	01-NOV-05	Last LNM: 48/06	NAD 83	08/07
ChartTitle: Straits of Florida and Approaches						

Main Panel 379 STRAITS OF FLORIDA AND APPROACHES. Page/Side: N/A

ADD	Research Natural Area PT C 1 OF 3; Chart No. 1: N22 RESEARCH NATURAL AREA (protected area: 36 CFR part 7) (NOS NW-13814)	NOS 24-43-32.040N	082-51-00.000W
ADD	Research Natural Area PT C 2 OF 3; Chart No. 1: N22 RESEARCH NATURAL AREA (protected area: 36 CFR part 7) (NOS NW-13814)	NOS 24-36-00.000N	082-51-00.000W
ADD	Research Natural Area PT C 3 OF 3; Chart No. 1: N22 RESEARCH NATURAL AREA (protected area: 36 CFR part 7) (NOS NW-13814)	NOS 24-36-00.000N	082-58-00.000W

11407 18th Ed. 26-JAN-02 Last LNM: 26/06 NAD 83 08/07

ChartTitle: Horseshoe Point to Rock Islands; Horseshoe Beach

CHART FL-HORSESHOE POINT TO ROCK ISLANDS. Page/Side: N/A

RELOCATE	Horseshoe Beach Approach Daybeacon 4	CGD07 from 29-23-39.813N to 29-23-39.634N	083-19-44.902W 083-19-45.159W
----------	--------------------------------------	---	----------------------------------

11408 28th Ed. 01-NOV-02 Last LNM: 52/06 NAD 83 08/07

ChartTitle: Crystal River to Horseshoe Point; Suwannee River; Cedar Keys

CHART FL-CRYSTAL RIVER TO HORSESHOE POINT. Page/Side: N/A

RELOCATE	Horseshoe Beach Approach Daybeacon 4	CGD07 from 29-23-39.813N to 29-23-39.634N	083-19-44.902W 083-19-45.159W
----------	--------------------------------------	---	----------------------------------

11420 28th Ed. 01-JUL-05 Last LNM: 48/06 NAD 83 08/07

ChartTitle: Havana to Tampa Bay

Main Panel 374 HAVANA TO TAMPA BAY. Page/Side: N/A

ADD	Research Natural Area PT 1 OF 3; Chart No. 1: N22 RESEARCH NATURAL AREA (protected area: 36 CFR part 7) (NOS NW-13814)	NOS 24-43-32.040N	082-51-00.000W
ADD	Research Natural Area PT 2 OF 3; Chart No. 1: N22 RESEARCH NATURAL AREA (protected area: 36 CFR part 7) (NOS NW-13814)	NOS 24-36-00.000N	082-51-00.000W
ADD	Research Natural Area PT 3 OF 3; Chart No. 1: N22 RESEARCH NATURAL AREA (protected area: 36 CFR part 7) (NOS NW-13814)	NOS 24-36-00.000N	082-58-00.000W

11426 37th Ed. 01-MAR-06 Last LNM: 43/06 NAD 83 08/07

ChartTitle: Estero Bay to Lemon Bay, including Charlotte Harbor; Continuation of Peace River

CHART FL-ESTERO BAY TO LEMON BAY INCLUDING CHARLOTTE HARBOR. Page/Side: N/A

RELOCATE	Pine Island Sound Light 11	CGD07 from 26-29-04.425N to 26-29-04.494N	082-03-52.522W 082-03-52.882W
----------	----------------------------	---	----------------------------------

11427 34th Ed. 01-MAY-05 Last LNM: 07/07 NAD 83 08/07

ChartTitle: Intracoastal Waterway Fort Myers to Charlotte Harbor and Wiggins Pass

CHART FL-ICW-FORT MYERS TO CHARLOTTE HARBOR & WIGGINS PASS. Page/Side: N/A

RELOCATE	Pine Island Sound Light 11	CGD07 from 26-29-04.425N to 26-29-04.494N	082-03-52.522W 082-03-52.882W
----------	----------------------------	---	----------------------------------

11434 27th Ed. 01-OCT-06 Last LNM: 23/06 NAD 83 08/07

ChartTitle: Florida Keys Sombrero Key to Dry Tortugas

Main Panel 373 FLORIDA KEYS SOMBRERO KEY TO DRY TORTUGAS. Page/Side: N/A

ADD	Research Natural Area PT 1 OF 3; Chart No. 1: N22 RESEARCH NATURAL AREA (protected area: 36 CFR part 7) (NOS NW-13814)	NOS 24-43-32.040N	082-51-00.000W
ADD	Research Natural Area PT 2 OF 3; Chart No. 1: N22 RESEARCH NATURAL AREA (protected area: 36 CFR part 7) (NOS NW-13814)	NOS 24-36-00.000N	082-51-00.000W
ADD	Research Natural Area PT 3 OF 3; Chart No. 1: N22 RESEARCH NATURAL AREA (protected area: 36 CFR part 7) (NOS NW-13814)	NOS 24-36-00.000N	082-58-00.000W

11438 12th Ed. 01-APR-04 Last LNM: 23/06 NAD 83 08/07

RELOCATE Bloody Point Range Lighted Buoy 10
Supercedes LNM 03/07
Temp Relocated/Dredging

CGD07
from 31-59-16.574N
to 32-00-28.508N

080-47-02.484W
080-47-42.792W

RELOCATE Bloody Point Range Lighted Buoy 11
Supercedes LNM 03/07
Temp Relocated/Dredging

CGD07
from 31-59-47.329N
to 32-01-09.096N

080-46-59.854W
080-48-30.594W

RELOCATE Tybee Range Lighted Buoy 6
Supercedes LNM 03/07
Temp Relocate/Dredging

CGD07
from 31-59-16.562N
to 31-59-16.574N

080-46-02.503W
080-46-02.484W

11509 30th Ed. 01-DEC-06 Last LNM: 01/07 NAD 83

08/07

ChartTitle: Tybee Island to Doboy Sound

Main Panel 254 TYBEE ISLAND TO DOBOY SOUND. Page/Side: N/A

RELOCATE Bloody Point Range Lighted Buoy 10
Supercedes LNM 03/07
Temp Relocated/Dredging

CGD07
from 31-59-16.574N
to 32-00-28.508N

080-47-02.484W
080-47-42.792W

RELOCATE Bloody Point Range Lighted Buoy 11
Supercedes LNM 03/07
Temp Relocated/Dredging

CGD07
from 31-59-47.329N
to 32-01-09.096N

080-46-59.854W
080-48-30.594W

RELOCATE Tybee Range Lighted Buoy 6
Supercedes LNM 03/07
Temp Relocate/Dredging

CGD07
from 31-59-16.562N
to 31-59-16.574N

080-46-02.503W
080-46-02.484W

11512 61st Ed. 01-OCT-06 Last LNM: 52/06 NAD 83

08/07

ChartTitle: Savannah River and Wassaw Sound

Main Panel 231 SAVANNAH RIVER AND WASSAW SOUND. Page/Side: N/A

RELOCATE Bloody Point Range Lighted Buoy 10
Supercedes LNM 03/07
Temp Relocated/Dredging

CGD07
from 31-59-16.574N
to 32-00-28.508N

080-47-02.484W
080-47-42.792W

RELOCATE Bloody Point Range Lighted Buoy 11
Supercedes LNM 03/07
Temp Relocated/Dredging

CGD07
from 31-59-47.329N
to 32-01-09.096N

080-46-59.854W
080-48-30.594W

RELOCATE Tybee Range Lighted Buoy 6
Supercedes LNM 03/07
Temp Relocate/Dredging

CGD07
from 31-59-16.562N
to 31-59-16.574N

080-46-02.503W
080-46-02.484W

11513 25th Ed. 01-APR-06 Last LNM: 05/07 NAD 83

08/07

ChartTitle: St. Helena Sound to Savannah River

Main Panel 253 ST HELENA SOUND TO SAVANNAH RIVER. Page/Side: N/A

RELOCATE Bloody Point Range Lighted Buoy 10
Supercedes LNM 03/07
Temp Relocated/Dredging

CGD07
from 31-59-16.574N
to 32-00-28.508N

080-47-02.484W
080-47-42.792W

RELOCATE Bloody Point Range Lighted Buoy 11
Supercedes LNM 03/07
Temp Relocated/Dredging

CGD07
from 31-59-47.329N
to 32-01-09.096N

080-46-59.854W
080-48-30.594W

RELOCATE Tybee Range Lighted Buoy 6
Supercedes LNM 03/07
Temp Relocate/Dredging

CGD07
from 31-59-16.562N
to 31-59-16.574N

080-46-02.503W
080-46-02.484W

25640 42nd Ed. 01-NOV-06 Last LNM: 49/06 NAD 83

08/07

ChartTitle: Puerto Rico and Virgin Islands

Main Panel 414 PUERTO RICO AND VIRGIN ISLANDS. Page/Side: N/A

CHANGE Cayo Maria Langa Light to 7NM at

CGD07
17-57-59.224N

066-45-09.289W

25677 20th Ed. 01-MAY-03 Last LNM: 19/06 NAD 83

08/07

CHART WEST INDIES-SOUTH COAST OF PUERTO RICO-GUANICA LIGHT TO PUNTA TUNA LIGHT. Page/Side: N/A

CHANGE Cayo Maria Langa Light to 7NM at CGD07 17-57-59.224N 066-45-09.289W

25681 16th Ed. 01-APR-03 Last LNM: 19/06 NAD 83 08/07

Main Panel 407 BAHIA DE GUAYANILLA AND BAHIA DE TALLABOA. Page/Side: N/A

CHANGE Cayo Maria Langa Light to 7NM at CGD07 17-57-59.224N 066-45-09.289W

SECTION V - ADVANCE NOTICES

This section contains advance notice of approved projects, changes to aids to navigation, or upcoming temporary changes such as dredging, etc. Mariners are advised to use caution while transiting these areas.

SUMMARY OF ADVANCED APPROVED PROJECTS

Approved Project(s) Project Date Ref. LNM

None

FLORIDA - KEY WEST - CALDA CHANNEL: Aid to be Discontinued.

The following change will be made to the aids to navigation system in Calda Channel.

CALDA CHANNEL DAYBEACON 11 (LLNR 15365) destroyed and remarked with a buoy will be permanently discontinued. The buoy will be removed.

The work is schedule to be completed the weeks of 19 March 2007.

Chart 11441 LNM: 08/07

SECTION VI - PROPOSED CHANGES

Periodically, the Coast Guard evaluates its system of aids to navigation to determine whether the conditions for which the aids to navigation were established have changed. When changes occur, the feasibility of improving, relocating, replacing, or discontinuing aids are considered. This section contains notice(s) of non-approved, proposed projects open for comment. SPECIAL NOTE: Mariners are requested to respond in writing to the District office unless otherwise noted (see banner page for address).

PROPOSED WATERWAY PROJECTS OPEN FOR PUBLIC COMMENT

Proposed Project(s) Closing Docket No. Ref. LNM

None

SECTION VII - GENERAL

This section contains information of general concern to the Mariners. Mariners are advised to use caution while transiting these areas.

BAHAMAS-TONGUE OF THE OCEAN-AUTEC: Aid Changed.

All mariners are advised that AUTEC Site 4 Light 2 (LLNR 80000.97) is extinguished.

Ref: LNM 14/05 through 06/07

LNM: 14/05

WEST INDIES-EASTCOAST PUERTO RICO-ISLA de CULEBRA: Unexploded Ordnance Disposal Operations.

DEMOLITION OF UNEXPLODED ORDNANCE - THE USACE HAS CONTRACTED ELLIS ENVIRONMENT GROUP TO DISPOSE OF UNEXPLODED ORDNANCE IN THE WATERS SURROUNDING ISLA DE CULEBRA. THE PROJECT IS SCHEDULED FOR COMPLETION IN 2012. THE FOLLOWING AREAS HAVE BEEN IDENTIFIED AS DEMOLITION SITES: 1. CAYO LOBO IN AP 18-19'27"N 65-22'36"W; 2. CAYO DEL AGUA IN AP 18-18'41"N 65-20'51"W; 3. ALCARRAZA 18-21'40"N 65-22'09"W; 4. LOS GEMEIOS IN AP 18-21'30"N 65-21'41"W; 5. BAHIA DE MAREJADA IN AP 18-19'45"N 65-17'55"W; 6. CAYO BOTELLA IN AP 18-19'30"N 65-14'26"W; 7. ISLA CUEBRITA 18-19'11"N 65-14'02"W; 8. CAYOS GENIQUI IN AP 18'20'20"N 65-13'54"W; 9. CAYO TIBURON IN AP 18'20'42"N 65-14'18"W; 10. CERRO BALCON IN AP 18-18'51"N 65-16'12"W. VLSL ARE CAUTIONED TO MAINTAIN A DISTANCE OF 1NM RADIUS FM THE ABOVE MENTIONED POSN DURING DEMOLITION OPERATIONS. DAYS AND TIMES OF OPERATIONS WILL BE BROADCAST VIA VHF-FM CHAN 22A. FOR FURTHER INFORMATION CONTACT USCG ON CHAN 16 OR 787-289-2041.

Ref: LNM 06/07

Charts: 25663 25664 25667

LNM: 06/07

WEST INDIES-PUERTO RICO-ISLA de VIEQUES-NORTH/EAST/SOUTH COAST: Unexploded Ordnance Disposal Operations.

Unexploded Ordnance Disposal Operations are being conducted with estimated completion date of 2010. Daily operations will take place from 0600 to 1800 at the north, east, and southern positions of Isla de Vieques. Vessels are cautioned not to enter an area encompassed by the following coordinates: Starting north of Vieques from shore at Point 1 (one) in approximate position 18-08'42N 065-19'W, then north approximately 1NM at Point 2 (two) in approximate position 18-09'N 065-19'W, then east approximately 4NM to Point 3 (three) at approximate position 18-09'N 065-14'54"W, then south approximately 4NM at Point 4 (four) at approximate position 18-06'18"N 065-14'54"W, then west approximately 4NM to Point 5 (five) in approximate position 18-06'18N 065-19'W and end north on shore at approximate position 18-07'30"N 065-19'00W. Vessels are cautioned not to enter above mentioned area during ongoing operations. For further information contact U.S. Navy, Roosevelt roads, Ceiba, PR at (787) 865-4152 ext 460.

Ref: LNM 07/06 through 06/07

Charts: 25663 25664 25667

LNM: 07/06

SEACOAST-FLORIDA-JUPITER INLET TO FOWEY ROCKS: Installation of Inert Targets. (Updated)

The United States Navy, South Florida Testing Facility (SFTF), Fort Lauderdale, Florida, will be installing offshore inert targets at the below areas bounded by the following coordinates until February 24, 2007:

RMS Field:

Corner Points	Latitude	Longitude
NW	26 deg 2.0' N	080 deg 5.6' W
SW	25 deg 58.3' N	080 deg 5.6' W
NE	26 deg 2.0' N	080 deg 2.8' W
SE	25 deg 58.3' N	080 deg 2.8' W

The targets in the field will be bottom moored and tethered in water depths ranging from 60 feet to 600 feet. All vessels are asked to stay well clear of the deployed vessel.

Chart 11466

LNM: 07/07

SEACOAST-GEORGIA-DOBOY SOUND TO FERNANDINA: Hazard to Navigation.

The Coast Guard has advised that an unidentified submerged obstruction has been reported in the Brunswick Bar Channel in approximate position 31-04'15.540W 081-16'57.360W, in between St Simons LWB STS (LLNR 515/6030) and St Simons Entrance LB 2 (LLNR 6040).

The reported depth at mean low water in this position is 35 feet. All vessels transiting the Brunswick Bar Channel should proceed with caution and be particularly aware of their navigational draft.

Chart 11502

LNM: 07/07

SEACOAST-FLORIDA-JUPITER INLET TO FOWEY ROCKS: Hazardous Surface and Underwater Operations.

The United States Navy, South Florida Testing Facility (SFTF), Fort Lauderdale, Florida, will be conducting hazardous offshore underwater and surface operations during the time period from February 24, 2007 to March 4, 2007.

The testing will be conducted in the field bounded by the coordinates listed below:

SEACOAST-FLORIDA-JUPITER INLET TO FOWEY ROCKS: Hazardous Surface and Underwater Operations.

RMS Field:

Corner Point	Latitude	Longitude
NW	26 deg 6.0-N	080 deg 0.0-W
SW	25 deg 56.0-N	080 deg 0.0-W
NE	26 deg 6.0-N	079 deg 53.0-W
SE	25 deg 56.0-N	079 deg 53.0-W

Navy assets will be working on the range in the area listed above. All vessels are asked to stay well clear of the Navy assets.

Chart 11466

LNM: 08/07

SEACOAST-FLORIDA-BETHEL SHOALS TO JUPITER INLET-BOYNTON BEACH INLET: Offshore Testing of Semi-Submersible Vehicle.

Lockheed Martin will commence offshore testing of an unmanned, remotely piloted, semi-submersible vehicle 1 to 10 miles offshore from Jupiter Inlet to Boynton Beach Inlet on or about February 1, 2007 with completion date on or about April 30, 2007.

The Lockheed Martins RHIB vessel and Sea Tow Palm Beach will support the semi-submersible and will be in constant radio contact with the operations crew and equipped with a remote kill switch.

All vessels will be monitoring VHF Channels 13 and 71. All mariners are urged to stay clear of the support vessels while transiting the area. For further information please contact Mr. Donny Jones at (561) 494-2245.

Ref: LNM 03/07 through 06/07

Chart 11474

LNM: 05/07

SOUTH CAROLINA-CHARLESTON HARBOR-COOPER RIVER-WANDO RIVER TERMINAL: Crane Delivery

Coast Guard Sector Charleston anticipates placing restrictions on vessels movements on the Wando River and Cooper River in Charleston Harbor, South Carolina at specified times during the period of 12 through 23 March 2007. These restrictions will be put in effect to ensure safety during the delivery of the four (4) new container cranes to the South Carolina State Ports Authority's Wando and North Charleston Terminals.

More information about the timing and location of the restrictions will be provided via Broadcast Notice to Mariners (BNM), Local Notice to Mariners (LNM), or Special Regulations. For further questions about this announcement please contact: LT Jon Bershire at (843) 720-3272.

Chart 11527

LNM: 08/07

SOUTH CAROLINA-COOPER RIVER-DRUM ISLAND: Submerged Hazards.

U.S.Coast Guard Sector Charleston, SC has advised that possible submerged hazards/demolition debris in Cooper River for duration of Grace and Pearman bridge demolition.

Boaters are advised to stay in the main channel when transiting under the new Ravenel Bridge on the Cooper River. For complete text and chartlett of MSI Bulletin see enclosure number (7).

Ref: LNM 20/06 through 06/07

Chart 11524

LNM: 20/06

SOUTH CAROLINA-ST SIMONS SOUND-BRUNSWICK HARBOR AND TURTLE RIVER: Hazard to Navigation.

The 46ft F/V DEFIANCE has sunk in approximate position 31-07-07.200N 081-22-59.400W, 0.5 NM SW of St Simons Sound Entrance Lighted Buoy 15 (LLNR 6105), water depth is 6 feet. All mariners are urged to use extreme caution while transiting the area.

Ref: LNM 02/07 and 06/07

Chart 11506

LNM: 02/07

GEORGIA-SAVANNAH RIVER-PORT WENTWORTH CHANNEL: Hazard to Navigation.

The Coast Guard has been advised that an unidentified submerged obstruction has been reported in the Port Wentworth Channel in the vicinity of the Atlantic Wood Facility.

The obstruction extends into the south side of the channel approximately 10 to 15 feet. All vessels transiting the Port Wentworth Channel should proceed with caution.

Chart 11514

LNM: 07/07

FLORIDA-CUMBERLAND SOUND-FERNANDINA HARBOR TO KINGS BAY-ST MARYS ENTRANCE: Hazard to Navigation.

The Coast Guard has advised that a 73 ft Shrimp Vessel has sunk in approximate position 30-45-04.200N 080-0612.000W in 53 feet of water. All mariners are advised to be on the lookout for floating debris from sunken vessel, and transit the area with caution.

Ref: LNM 02/07 through 06/07

Chart 11502

LNM: 02/07

FLORIDA-AMELIA ISLAND TO ST AUGUSTINE: Underwater Marine Repairs.

U.S. Naval Station Mayport will be placing a work boat in a four point mooring over the Naval Station Degaussing Range at various times based upon periods of slack water while divers conduct underwater repairs.

The mooring legs will not interfere with the main channel of the St John River, but will restrict passage of Naval Ships in the Naval Station Mayport Approach Channel. Local traffic to and from the Mayport Basin will be halted during those times when work is in progress.

Four mooring balls will remain in position clear of the St Johns Bar Cut Channel and will be marked with Quick Flashing White Lights (QW). The work boat will display anchor ball day shapes and dive flags for daytime operations, appropriate obstruction lights during darkness, and will monitor VHF Channels 12 and 13 while on station.

Upon completion of daily work mooring legs will be recovered, and the work boat will return to port, clearing the Naval Station Mayport Approach Channel. This operation is ongoing and will be completed on or about April 30, 2007.

Ref: LNM 04/07 through 06/07

Chart 11488

LNM: 04/07

GEORGIA - INTRACOASTAL WATERWAY - ST SIMONS SOUND TO TOLOMATO RIVER - CUMBERLAND SOUND: Notice of Interest to Mariners.

Due to the limited commercial use of the Atlantic Intracoastal Waterway between Port Royal Sound, South Carolina (Mile 552) and Cumberland Sound, Georgia (Mile 713), the Savannah District will not receive funds to maintain the waterway to the authorized depths. The District will monitor the conditions of the waterway and publish quarterly condition reports.

Mariners are to use extreme caution when transiting the waterway until further notice.

Ref: LNM 48/03 through 05/07

Chart 11489

LNM: 48/03

FLORIDA-ST JOHNS RIVER-MATANZAS INLET-BLACK CREEK: Special Bridge Notice.

The Coast Guard has issued a public notice about the permit application for approval of location and plans to replace an existing bridge and construct a wider fixed bridge on CR 209 across the Black Creek, mile 8.4 at Rideout, Clay County, Florida. (T5S/S9/R25E). These public notices 27-06 which solicits comments through March 9, 2007, are attached to this Local Notice to Mariners as Enclosure Number 12. The project manager is Mr. Brodie Rich at (305) 415-6736 or via e-mail at: Brodie.E.Rich@uscg.mil.

CG Bridge File: 3857/3858

Chart 11489

LNM: 08/07

FLORIDA-MIAMI TO ELLIOT KEY: Hazard to Navigation.

The Coast Guard has received a report of a submerged crane in the vicinity of the Marine Stadium near Biscayne Bay, Miami, Florida.

The approximately position: 25 deg 44.69N 080 deg 10.14W. All mariners are advised to exercise caution while transiting the area.

Ref: LNM 51/06 through 06/07

Chart 11465

LNM: 51/06

FLORIDA-SOMBERO KEY TO SAND KEY- WHALE HARBOR: Hazard to Navigation.

The Coast Guard has received a report of a metal pile sticking out of the water approximately one and a half feet between Whale Harbor Daybeacon 3 (LLNR 12700) and Whale Harbor Daybeacon 4 (LLNR 12705).

All mariners are advised to transit the area with caution.

Ref: LNM 30/05 through 06/07

Chart 11442

LNM: 30/05

FLORIDA-CHARLOTTE HARBOR TO TAMPA BAY-NEW PASS ENTRANCE CHANNEL: Uncharted Buoys.

The New Pass Entrance Channel is subject to continual change. Buoys are not charted because they are frequently shifted in position. The controlling depth was 8 feet for a width of 100 feet from LIGHT 7 (LLNR 21620) to the S R Bridge; thence 6 feet for a width of 100 feet to the Intracoastal Waterway and 8 feet to the basin; 7 feet in the basin except for shoaling to 3 1/2 feet in the southeast section of the basin.

BUOYS NOT CHARTED IN NEW PASS ENTRANCE CHANNEL

- Buoy 1 (LLNR 21590), - Buoy 2 (LLNR 21595), - Buoy 3A (LLNR 21600), - Buoy 5 (LLNR 21605) and - Buoy 5A (LLNR 21610)

Mariners are advised to use caution while transiting this area and view Local Notice to Mariners editions for shoaling information and repositioning of aids to navigation.

FLORIDA-CHARLOTTE HARBOR TO TAMPA BAY-NEW PASS ENTRANCE CHANNEL: Uncharted Buoys.

Ref: LNM 52/04 through 06/07

Chart 11425

LNM: 52/04

FLORIDA- TAMPA BAY ENTRANCE- TAMPA BAY: Marine Advisory.

In order to minimize the risk of collision with deep draft vessels and improve the safe transit of shallow draft vessels within the Tampa Bay and its approaches, the Coast Guard Captain of Port Tampa, Florida issues the following advisory: A NOAA survey number H-11344 conducted in July, 2004 reported that a water depth of 10 feet extends approximately 500 feet outward from both sides of the main ship channel in the waters west of the Sunshine Skyway Bridge adjacent to Egmont Channel, Mullet Key Channel, and Tampa Bay Cut "A" except in the vicinity of the Sunshine Skyway Bridge where existing security zones prohibit navigation closer than 100 feet around all bridge supports, dolphins, and rocky outcroppings from piers 88 to 135. Continuing east of the Sunshine Skyway Bridge, the advisory includes the waters adjacent to Point Pinellas Channel, Tampa Bay Cuts -A-, "B", "C", "D", "E", "F", "G", "J", "J-2", West of "K" Cut, Gadsen Point Cut, and Hillsborough Bay Cuts "A", and "C". All vessels drafting less than 10 feet may consider utilizing waters that have been identified by the 2004 NOAA survey parallel to, and within 500 feet of, the main ship channel when identifying the safest navigational course for transiting Tampa Bay and its approaches.

Ref: LNM 14/05 through 06/07

Chart 11415

LNM: 14/05

FLORIDA-ESTERO BAY TO LEMON BAY, INCLUDING CHARLOTTE HARBOR CONTINUATION OF PEACE RIVER: Establishment of Artificial Reef.

The Coast Guard has been advised that a Collier County Artificial Reef Project approved by the Department of Environmental Protection (DEP) and The Army Corps of Engineers will commence on February 22, 2007 in approximate position 26-26-06.990N 081-48-00.690W in an area of approximate one (1) sq mile, in the waters of Collier County, Florida.

Argonaut Marine Company, will have on scene of one (1) crane barge, one (1) dive barge and work boat. DEP has approved the use of limerock boulders for this project. This project will continue until May 1, 2007 or completion.

Operating hours are between 6:00 a.m. and 6:00 p.m. daily, seven (7) days per week, weather permitting. For additional information please contact Mr. Wayne Konga at (727) 809-2768.

Chart 11426

LNM: 08/07

FLORIDA-INTRACOASTAL WATERWAY-TOLOMATO RIVER-PALMS SHORES: Hazard to Navigation.

The Florida Fish and Wildlife Conservation Commission (FWC) has advised that ten (10) inch wooden waterway markers has been installed and equipped with highly reflective tape in the following positions 27-55.355N 080-30.375W, 27-55.353N 080-31.091W, 27-54.761 080-30.848W, 27-56.320N 080-31.603W, and 27-55.679N 080-31.359W. All mariners are urged to use extreme caution while operating in this area.

Chart 11484

LNM: 08/07

FLORIDA-INTRACOASTAL WATERWAY-TOLOMATO RIVER-PALMS SHORES-SAN SEBASTIAN RIVER: Dredging Operations.

Subaqueous Services Inc., has requested that the U.S. Coast Guard issue a Broadcast Notice to Mariners and a Local Notice to Mariners advising all mariners transiting the San Sebastian River between the U.S. 1 bridge and the North Prong Dam, that this portion of the river is being used as a staging area for floating and submerged pipeline for an upcoming dredging project to begin in the month of March 2007, with completion in year 2010.

The piping is marked with identification buoys and lights. The actual date and location/position of this dredging project will be published at a later date in the Local Notice to Mariners.

All mariners are urged to transit this area with extreme caution and a slow safe speed as some pipe is submerged. For further information please contact Ms. Adrienne Council, Project Administrator at (407) 926-7796.

Ref: LNM 05/07

Chart 11485

LNM: 05/07

FLORIDA-INTRACOASTAL WATERWAY-MIAMI TO ELLIOT KEY

Eighteen (18) inch yellow special purpose work buoys will be deployed in and within the immediate vicinity of the Atlantis Project Site to facilitate construction. These buoys will be periodically relocated until the project is completed.

The project is located between Latitudes 25 deg 41'00N and 25 deg 42.050W, Longitudes 080 deg 05.320N and 080 deg 05.480W.

Ref: LNM 47/06 through 06/07

Chart 11465

LNM: 47/07

FLORIDA - INTRACOASTAL WATERWAY - CHARLOTTE HARBOR TO TAMPA BAY: Hazard to Navigation. (Updated)

The Coast Guard has received a report of a possible submerged object in the vicinity of the center span of the Ringling Bridge.

FLORIDA - INTRACOASTAL WATERWAY - CHARLOTTE HARBOR TO TAMPA BAY: Hazard to Navigation. (Updated)

On February 10, 2006 three (3) temporary buoys were deployed south of the new Ringling Causeway Bridge, in Sarasota Bay to mark submerged rocks that could pose a hazard to navigation during high tides. All three (3) buoys are east of the Gulf Intracoastal Waterway outside of the marked channel. The buoys are a standard, white, cylindrical information buoy. The buoys are anchored in place either on or in close proximity to the submerged rocks.

The buoys are one (1) foot in diameter and approximately 5 ½ feet tall, marked with a orange diamond shape and worded HAZARD. The approximate positions of the buoys are:

1. 27-19-52.620N 082-33-24.060W
2. 27-19-52.920N 082-33-23.220W
3. 27-19-53.940N 082-33-22.080W

It is requested that all mariners exercise caution when transiting this area.

Ref: LNM 08/06 through 06/07

Chart 11425

LNM: 06/06

SECTION VIII - LIGHT LIST CORRECTIONS

An Asterisk *, indicates the column in which a correction has been made to new information

(1) No.	(2) Name and Location	(3) Position	(4) Characteristic	(5) Height	(6) Range	(7) Structure	(8) Remarks
18295	Matanzas Pass Channel Daybeacon 26	26-27-28.839N 081-56-56.050W *				TR on pile.	08/07
32065	Cayo Maria Langa Light	17-57-59.224N 066-45-09.289W	FI W 2.5s	42	7 *	NR on skeleton tower.	08/07
46985	Lake Worth South Daybeacon 40	26-34-36.061N 080-02-47.626W *				TR-TY on pile.	08/07

ENCLOSURES**1. North Atlantic Right Whales Warning**

U.S. Mandatory Ship Reporting System (WHALE SOUTH)

LNM: 44/06

2. Special Warning Number 123, Somali.

Due to continuing conditions of armed conflict and lawlessness in Somali and waters off its coast, mariners are advised to avoid the Port of Mogadishu and remain at least 200 nautical miles distant from the Somali Coast.

3. Operation On Guard

On Guard Announcement

4. Dredging and Marine Construction

Dredging and Marine Construction List

5. Shoaling and Hazardous Situations

Shoaling and Hazardous Situation List

6. Bridge Construction and Repair/Drawbridge Status

Weekly Updated Status

7. Safe Boating Programs

Auxiliary Programs and Classes

8. Marine Safety Information Bulletin

Possible Submerged Hazards/Demolition Debris in Cooper River.

Chart 11524

LNM: 20/06

9. Marine Safety Information Bulletin

Port of Palm Beach Draft Restriction - Update #1

Chart 11472

10. Restricted Lock Operations

W.P. Franklin Lock. Okeechobee Waterway, Florida

LNM: 08/07

12. Public Notice Number 27-06

Special Bridge Notice, Black Creek, mile 8.4, on County Road 209 at Rideout, Clay County, Florida

LNM: 08/07

D.W. Kunkel
Rear Admiral, U.S. Coast Guard
Commander, Seventh Coast Guard District

NORTH ATLANTIC RIGHT WHALES WARNING:

From December to March the coastal waters between Altamaha Sound, GA, and Sebastian Inlet, FL, are used as calving grounds by the severely endangered North Atlantic Right Whale. This is the world's only known calving ground for this species. Right Whales are the rarest whales in the world and are protected under law from disturbance or injury by the endangered species act of 1973, and the Marine Mammal Protection act of 1972. Right Whales, especially females and their calves, are slow swimmers and frequently lie at the surface. This behavior makes them vulnerable to collisions with ships, which are a significant source of mortality. Vessels operating within 25 miles of shore between 31-27N and 29-50N and within five miles of shore from 29-50N and 28-00N should take precautions to avoid collisions with Right Whales.

Intentional close approach to right whales is prohibited and is a violation of federal law. A minimum distance of 457 meters (500 yards) must be maintained of a right whale. If a dead or entangled right whale is sighted, report it immediately to the nearest Coast Guard unit via VHF-FM radio. Additional information about right whales is available in the U.S. Coast Pilot.

U.S. Mandatory Ship Reporting System (WHALESSOUTH)

The U.S. Coast Guard will commence operation of the mandatory ship reporting (MSR) system (**WHALESSOUTH**) from November 15 to April 15, in conjunction with the northern right whale calving season. All vessels, 300 gross tons or greater, shall report to the Coast Guard prior to entering the southeast reporting area. Reports are required during a single voyage (that is, a voyage in which a ship is in the area to visit one or more ports or traverse the area enroute to a port outside the reporting area). Ships are not required to report when leaving port or when exiting the system. Ships submitting reports will receive a reply message via INMARSAT C containing the most recent Right Whale sighting information, along with recommendations for avoiding collisions with Right Whales. The MSR system was adopted by International Maritime Organization (IMO) Resolution A. 858(20) in accordance with the International Convention for the Safety of Life at Sea 1974 (SOLAS 74). Sovereign immune vessels are exempt from the requirement to report, but are encouraged to participate. No commercially sensitive information is being requested.

REPORTING AREA

- a. **WHALESSOUTH:** The geographical boundaries of the southeast reporting system include coastal waters within about 25 nautical miles along a 90 nautical mile stretch of the Atlantic seaboard in Florida and Georgia. The area extends from the shoreline east to longitude 80°51.60'W with the southern and northern boundaries at latitude 30°00.00'N and 31°27.00'N, respectively. NOAA Chart No. 11009.

REPORTING METHOD

- a. Vessels are required to report specific ship information to the Coast Guard upon entry into the reporting area. Direct reports should be made via INMARSAT C to one of the below addresses.
E-mail: RightWhale.MSR@noaa.gov or Telex: 236737831
- b. Vessels not equipped with INMARSAT C should report directly to one of the below addresses via alternate satellite communications equipment.
E-mail: RightWhale.MSR@noaa.gov or Telex: 236737831
- c. Vessels unable to use satellite communications equipment should contact the U.S. Coast Guard Communication Area Master Station, Chesapeake, VA via SITOR/NBDP on 8426.3 kHz, 12590.8 kHz, 16817.8 kHz twenty four hours per day, or 6314.3 kHz from 2300 GMT until 1100 GMT and 22387.8 kHz from 1100 GMT until 2300 GMT.
- d. Vessels unable to use satellite communications or SITOR/NBDP should contact the U.S. Coast Guard Communication Area Master Station, Chesapeake, VA via published voice frequencies.

REPORTING INSTRUCTIONS

- a. Vessels shall report the following information in accordance with the IMO format in Resolution A. 648(16) General Principles for Ship Reporting Systems and Ship Reporting Requirements.

Paragraph	Function	Information Required
System name	System identifier	WHALESSOUTH.
M	INMARSAT number	Vessel INMARSAT number.

A	Ship	Vessel name and call sign.
B	Date, time, and month of report	Six digit group giving day of month and time, single letter indicating time zone, and three letters indicating month.
E	True course	3-digit number indicating true course.
F	Speed in knots and tenths	3-digit group indicating knots and tenths.
H	Date, time, and point of entry into system	Date and time expressed as in (B) and latitude and longitude expressed as a four digit group giving latitude, the letter N indicating north, followed by a /, a five digit group giving longitude, and the letter W indicating west.
I	Destination and ETA	Name of port and arrival time expressed as in (B).
L	Route information	Route information should be reported as either a direct rhumbline to port (RL) and intended speed expressed as in (F), or a series of way points (WP). Vessels reporting waypoints should include latitude and longitude, expressed as in (H), and intended speed between waypoints. For vessels transiting within a traffic separation scheme (TSS), give only the waypoints and intended speed for entry and departure of TSS.

- b. Reports shall follow the prescribed format shown below. Reports should be sent as a direct email to RightWhale.MSR@noaa.gov or telex to **236737831**. Use of batch message routing services may delay receipt of a report. Proper format is required to ensure receipt of reply message. Including extra information, extra characters, or double spacing may result in failure of the system to send a reply message:
- c. Example report for WHALESSOUTH:

```

WHALESSOUTH//
M/412345678//
A/BEAGLE/NVES//
B/270810Z MAR//
E/250//
F/17.0//
H/270810Z MAR/3030N/08052W//
I/MAYPORT/271215Z MAR//
L/RL/17.0//

```


SUBJ: REBROADCAST OF SPECIAL WARNING 123.
UNCLASSIFIED//
MSGID/GENADMIN/NGA NAVSAFETY BETHESDA MD//
RMKS/

SPECIAL WARNING NUMBER 123. SOMALI.

1. DUE TO CONTINUING CONDITIONS OF ARMED CONFLICT AND LAWLESSNESS IN SOMALIA AND WATERS OFF ITS COAST, MARINERS ARE ADVISED TO AVOID THE PORT OF MUQDISHO (MOGADISHU) AND TO REMAIN AT LEAST 200 NAUTICAL MILES DISTANT FROM THE SOMALI COAST. THE U.S. GOVERNMENT DOES NOT HAVE AN EMBASSY IN SOMALIA AND CANNOT PROVIDE SERVICES TO US CITIZENS.
2. RECENT VESSEL HIJACKINGS OFF THE EAST COAST OF SOMALIA DEMONSTRATE THAT PIRATES ARE ABLE TO CONDUCT AT SEA HIJACKINGS FROM AS FAR SOUTH AS KISMAAYO (CHISIMAYU) (00-22S), THOUGH VESSELS ARE ADVISED TO TRANSIT NO CLOSER THAN 02-00S, TO AS FAR NORTH AS EYL (08-00N), AND OUT TO A DISTANCE OF 170 MILES. THE FIRST KNOWN ATTEMPT TO HIJACK A CRUISE VESSEL OCCURRED IN NOVEMBER 2005. ALL MERCHANT VESSELS TRANSITING THE COAST OF SOMALIA, NO MATTER HOW FAR OFFSHORE, SHOULD INCREASE ANTI-PIRACY PRECAUTIONS AND MAINTAIN A HEIGHTENED STATE OF VIGILANCE. PIRATES ARE REPORTED TO HAVE USED PREVIOUSLY HIJACKED SHIPS AS BASES FOR FURTHER ATTACKS.
3. ANOTHER REPORTED PIRATE TACTIC HAS BEEN TO ISSUE A FALSE DISTRESS CALL TO LURE A SHIP CLOSE INSHORE. THEREFORE, CAUTION SHOULD BE TAKEN WHEN RESPONDING TO DISTRESS CALLS KEEPING IN MIND IT MAY BE TAKEN WHEN RESPONDING TO DISTRESS CALLS KEEPING IN MIND IT MAY BE A TACTIC TO LURE A VESSEL INTO A TRAP.
4. VICTIMIZED VESSELS HAVE REPORTED TWO TO THREE (2-3) SPEEDBOATS MEASURING SIX TO NINE METERS (6-9M) IN LENGTH. EACH VESSEL HAS A CREW OF THREE TO SIX (3-6) ARMED MEN WITH AK-47S AND SHOULDER LAUNCHED ROCKETS, WHICH ARE OPENING FIRE ON VESSELS IN BROAD DAYLIGHT IN ORDER TO INTIMIDATE THEM INTO STOPPING.
5. TO DATE, VESSELS THAT INCREASE SPEED AND TAKE EVASIVE MANEUVERS AVOID BOARDING WHILE THOSE THAT SLOW DOWN ARE BOARDED, TAKEN TO THE SOMALI COASTLINE, AND RELEASED AFTER SUCCESSFUL RANSOM PAYMENT, OFTEN AFTER PROTRACTED NEGOTIATIONS OF AS MUCH AS 11 WEEKS.
6. CANCEL SPECIAL WARNING NUMBER 111.//

#5827

BT

NNNN

OPERATION "ON GUARD"

U. S. Coast Guard Marine Safety Office Miami announces Operation "ON GUARD". This operation is designed to employ Coast Guard - active duty, reserve and auxiliary, Federal Bureau of Investigation, US Customs Service, US Immigration and Naturalization Service and the Florida Department of Law Enforcement personnel in response to suspected terrorist activity at the waterfront facilities of the United States. South Florida is extremely vulnerable because it is the terminus of illegal alien and narcotics smuggling routes from the Bahamas, the Caribbean and South America. These routes are well established and are readily available for use by terrorist organizations. An urgent need existed to make the American Public equal partners in the fight on terrorism. Operation "ON GUARD" creates an effective deterrent measure that employs the eyes and ears of the marine industry and the boating public, people that know every inch of the coastline because it is where they work and play. Potential terrorists are put on notice that their activities will be seen and reported.

Operation "ON GUARD" takes a two pronged approach consisting of face to face visits by Coast Guard, FBI, USCS, INS and FDLE personnel combined with a coordinated joint agency media campaign to reach Marina Operators, Marine Dealers, Bridge Tenders, Commercial Fishermen, and the Boating Public. This operation relies on Coast Guard Auxiliary programs already in place like the "Clean Marina" program, Vessel Safety Checks, Marine Dealer Visits and the Commercial Fishing Vessel Safety Program to reach their normal customers, the waterfront users. The public is provided with the toll free number (1.800.424.8802) for reporting suspected terrorist activity to the National Response Center and the 1.800.BE ALERT number for US Customs along with a list of reporting criteria.

Report:

- Suspicious persons conducting unusual activities
- Individuals establishing businesses or roadside food stands in proximity to marina or bridge
- Unknown persons photographing or creating diagrams
- Unknown or suspicious persons loitering for extended periods of time
- Unknown or suspicious persons renting watercraft
- Suspicious vendors attempting to sell/deliver merchandise or drop off packages

For additional information contact: LCDR Armin Cate (305) 535-8735

D. DREDGING AND MARINE CONSTRUCTION OPERATIONS

Location	Type of Work	EST Comp Date	Dredge	Ref LNM
Bahamas	Above Water Cable Ops	UNK	UNKNOWN	10/03
WI-PR- San Juan Harbor	Dredging Ops	MAR07	Dredge 51	04/07
SC-Beaufort	Marine Construction Ops	MAY07	CAPTAIN HARRINGTON	46/06
SC-Charleston Harbor	Dredging Ops	OCT07	HAMPTON ROADS	04/07
SC-Charleston Harbor-Cooper River	Marine Construction Ops	UNK	Tug LAURA	38/02
SC-Cooper River	Drilling Ops	UNK	Spud Barges	04/02
FL-Jacksonville Harbor	Dredging Ops	SEP07	ACOE	35/06
FL-Daytona Beach	Dredging Ops	MAY07	Subaqueous Services	51/06
FL- Sebastian River	Dredging Ops	2010	Subaqueous Services	05/0
FL-Melbourne	Dredging Ops	FEB07	KRISTI JOE	51/06
FL-Vero Beach	Beach Nourishment	MAY07	PADRE ISLAND/DODGE ISLAND	05/07
FL-Palm Beach Harbor	Dredging Ops	APR07	ATCHAFALAYA	04/07
FL-Jupiter Island	Dredging Ops	FEB07	LIBERTY ISLAND	43/06
FL-Jupiter Inlet-North/South Jetty	Marine Construction	FEB07	Shoreline Foundation, Inc.	44/06
FL-St Lucie Inlet	Dredging Ops	FEB07	ILLINIOS	04/07
FL-St Lucie Inlet – Sailfish Point Marina	Dredging Ops	MAR 07	Subaqueous (Tug ER Adams)	05/07
FL-Tampa Bay-Port Sutton	Dredging Ops	MAR07	C.K. HUGGINS	04/07
FL-Tampa Bay-Sparkman Channel	Dredging Ops	MAR07	Misener Marine Construction Inc	45/05
FL-Wiggin Pass	Dredging Ops	FEB07	MISTER O	04/07
FL-Boca Grande Pass	Beach Renourishment	MAR07	BEACHBUILDER	04/07

E. SHOALING AND HAZARDOUS SITUATIONS

Location	Waterway	Significant Information	Chart	Ref LNM
SC	Seacoast	Charleston Harbor Ocean Dredged Material Disposal Site (ODMDS) higher than charted depths, minimum depth may be 18 feet.	11521	09-01
SC	Murrells Inlet	Shoaling continues to be reported between Murrells Inlet Buoy 4 (LLNR 1775) and Murrells Inlet Buoy 9 (LLNR 1795.5)	11534	10-06 37-06
SC	Murrells Inlet	Shoaling has been reported in the vicinity of Murrells Inlet Buoy 25 (LLNR 1850)	11534	31-06
SC	Little River Inlet	A 47 ft tug sank in approx position 33-50.1N 078-32.8W and is marked with a lighted buoy	11535	29-03
SC	Winyah Bay	Shoaling has been reported in position 33-13-00N 079-11-50W in the vicinity of Georgetown Lighthouse (LLNR 20) the depth of the water was reported at 27 feet.	11535	50-01
SC	Folly River	Shoaling has been observed between Folly River Buoy 14A (LLNR 3750.6) and Folly River Buoy 19 (LLNR 3750.7)	11522	19-04
SC	Shem Creek	Shoaling in the vicinity of SHEM CREEK RANGE LIGHT 16 (LLNR 3555)	11524	29-03
SC	Charleston Hbr	SHEM CREEK RANGE FRONT LIGHT (LLNR 3560) is not properly marking the center of the channel and has been changed to a quick flashing green light (QG) and is displaying square green (SG) dayboards.	11524	44-02
SC	Charleston Hbr	Severe shoaling in center of channel datum at depth of 5.5 MLW between Mt. Pleasant Channel DB 1 (LLNR 3510) and Mt. Pleasant Channel DB 2 (LLNR 3515).	11523	31-03
SC	Cooper River	A midstream transfer facility is conducting continued operations in the vicinity of Naval Weapons Station near the TC dock. Operations are outside the marked navigation channel and should not impede navigation.	11524	36-03
SC	Cooper River	Concrete and rock reported at the 40 foot depth on both sides of the navigation channel adjacent to the manmade islands directly under the I-526 Bridge.	11524	49-02
SC	Cooper River	A conveyor extends approx 20 ft into Town Creek beneath Cooper River bridges.	11524	13-02
SC	Stono Inlet	Shoaling to 7 feet at MLLW between Stono Inlet Channel Buoy 3 (LLNR 3710) and Buoy 4 (LLNR 3715).	11522	31-03
SC	Folly River	Obstruction (steel H beam) reported 50-70 yds outside marked channel and outheast of FOLLY RIVER LB 2 (LLNR 3735) at low tide	11522	06-02
SC	Folly River	Shoaling to 5 ft at MLW reported in the Folly River from Folly River LB 2 (LLNR 3735) to Folly River LB 7 (LLNR 3740) and to 5 ft at MLW from Folly River Buoy 18 (LLNR 3755 to Folly River Buoy 19 (LLNR 3760) within the confines of the marked channel.	11522	06-03
SC	Beaufort River	A 10"x10"x10" beam with pilings reported snagged on a private dock between Stono River DBN 57A (LLNR 34800) on the Stono River.	11518	06-02
SC	Beaufort River	Continued shoaling to depths of 6.5 feet in the vicinity from WHITE POINT LT 110 (LLNR 34945) through Dawho River Buoy113 (LLNR 34960)	11518	30-01
SC	Cooper River	Submerged Obstruction reported in the vicinity of the Cooper River Bridge in approximate position 32-48-12.600N 079-55-03.400W	11524	10-01
SC	Cooper River	Shoaling to depths of 8 feet above charted datum reported in the vicinity of Cooper River Range "D" at the Naval Weapons Station.	11524	19-01
SC-ICW	Ashepoo Riv	Shoaling has been reported between Fenwick Cut Daybeacon 161A (LLNR 35140.5) And Ashepoo River LT 164 (LLNR 35145). Water depth reported 5 feet at low tide.	11518	17-04
SC-ICW	Little River	Little River Swing Bridge is missing a section of the dolphin fendering system.	11534	40-02
SC-ICW	Winyah Bay	Shoaling has been reported along Range E, Entrance Channel to Georgetown, SC	11534	06-06
SC-ICW	Winyah Bay	Shoaling has been reported between Winyah Bay-Charleston Harbor Daybeacon 37 (LLNR 34240) and Winyah Bay-Charleston Harbor Daybeacon 38 (LLNR 34240)	11518	51-03
SC-ICW	Brickyard Creek	A new shoal extends out of channel on green side between Brickyard Creek Daybeacon 209 (LLNR 35325) and Brickyard Creek Daybeacon 211(LLNR 35335). Water depth at low tide is reported at 2.6 feet.	11507	17-04
SC-ICW		Severe reported shoaling between Hell's Gate Daybeacon 89 (LLNR 36279) and Hell's Gate Light 92 (LLNR 36290).	11507	17-06
SC-ICW	Port Royal Sound	Severe shoaling has been reported in various located in the ICW between Port Royal Sound, SC and Fernandina, FL. (See LNM 31/05 for Channel Conditions).		31-05
GA-ICW	Vernon River	Shoaling has been reported in the middle of channel from Raccoon Key LB 78 (LLNR 36265) and Hells gate LT 91 (LLNR 36285)	11507	17-04
GA	St Catherinres Snd	Shoaling reported in vicinity of St Catherines Snd LB 2 (LLNR 5795)	11511	33-06
GA	Darien River	Shoaling has been reported between Darien River Buoy 12 (LLNR 36826.3) and Darien River Buoy 14 (LLNR 36826.4). Water depth reported 5 feet low tide.	11507	06-04
GA	Beaufort River	Shoaling as been observed between Little Mud river LT 190 (LLNR 36865) and Little Mud River (LLNR 36870). Water depth reported 9 feet at low tide.	11510	35-00
GA	Doboy Sound	Shoal 500 yards WNW of DOBOY SOUND LT 8 (LLNR 5945).	11510	35-00
GA	Mackay River	Piling marked by white strobe light is protruding one foot above waterline in center of channel	11510	17-02
GA	Altamaha Sound	Shoal between ALTAMAHA SOUND LT 2 (LLNR 5950) & LT 5 (LLNR 5965)	11508	06-00
GA	Hampton River	Shoaling reported between Hampton River Daybeacon 15 (LLNR 5985) and Hampton River Daybeacon 17 (LLNR 5990).	11508	23-04
GA-ICW	St Simons Sound	Shoaling reported in vicinity of Tolomato River LB 60 (LLNR 38910). Relocated buoy to mark best water.	11485	39-06

GA	St Andrew Sound	Shoaling reported in vicinity of St Andrew Sound Buoy 2 (LLNR 6410). Depth reported 4 feet.	11508 23-04
GA	Jekyll Creek	Shoaling to a depth of 7 feet at the centerline has been reported throughout Jekyll Creek	11489 31-01
GA ICW	Savannah River	Shoaling reported in the area between Elba Island Cut LT 2 (LLNR 35880) and Elba Island Cut LT 4 (LLNR 35885), Soundings shows the depth between two and four feet, approx 20 yards into the channel between the aids.	11507 01-05
GA ICW	Jekyll Creek	Shoaling has been observed between Jekyll Creek LT 20 (LLNR 37345) and Jekyll Creek LT 20A (LLNR 37346). Water depth reported 5 feet at low tide.	11489 06-04
FL East Coast	Amelia River	Extensive shoaling reported in the vicinity of South Amelia River DBN 34 (LLNR 38100)	11489 34-01
FL East Coast	Amelia Island	An unlit pier extends into the South Amelia River at LIGHT 29 (LLNR 38080) in approx position 30-35-09N 081-27-18W	11489 04-03
FL East Coast	St Johns River	Shoaling has been reported in the channel south of Mt Royal Light 63 (LLNR 8510) to Fort Gates Light 65 (LLNR 8520). Depth reported at low water is 4 feet.	11495 24-06
FL East Coast	Ortega River	Submerged pilings on west bank of upper Ortega River extending out approx 150 ft.	11492 17-02
FL East Coast	St. Augustine	5 foot in diameter unlighted buoy anchored in 27-38-20N 080-13-15W.	11474 04-01
FL East Coast	St Lucie Inlet	St Lucie River (North Fork) DBN 2 (LLNR 50845), previously reported as destroyed, has been marked with a temporary red lighted buoy "2WR" with a Q W flash characteristic in position 27-12-08.940N, 080-15-45.585W, in 10 feet of water. A single concrete pile remains on scene, approximately 3 feet below the surface at low tide.	11428 06-03
FL East Coast	Lake George	Obstructions reported 100 yards west and 100 yds NW of Lake George South End Range Front Light (LLNR 8775).	11495 05-03
FL East Coast	Halifax River	Shoaling to an unknown depth has been reported in the vicinity of Halifax River Daybeacon 68 (LLNR 40470) and Halifax River Daybeacon 70 (LLNR 40480).	11485 19-01
FL East Coast	Halifax River	The shoaling is reported to extend 40 yards from the west bank of the channel. Shoaling to a depth of 3 feet in the vicinity of Halifax River DBN 30 (LLNR 40000) Increasing to a depth of 8 feet, 20 yards to the east of the DBN	11485 28-01
FL East Coast	Matanzas Coast	66 F/V sunk in position 29-03-09N 080-52-06W.	11484 43-00
FL East Coast	Matanzas River	Shoaling reported in Matanzas River, north of Mantanzas bridge on west side of channel Approx 20 feet into channel.	11485 09-05
FL East Coast	Matanzas River	Shoaling reported with soundings of 9 feet at low tide trying to close itself in between <u>MATANZAS RIVER LIGHT 1</u> (LLNR 39035) and Matanzas River B 2 (LLNR 39040).	11485 37-03
FL East Coast	Matanzas River	Shoaling constant near Matanzas River B 2 (LLNR 39040), and Tolomato River B 60 (LLNR 38910). Dredging operations continuous.	11485 31-00
FL East Coast	Matanzas River	Shoaling has been reported in the vicinity Matanzas River DBN 3 (LLNR 18090) Reported depths are 9.3 feet approx 300 feet WNW of DBN.	11427 29-01
FL East Coast	Matanzas River	Shoaling has been reported in the vicinity Matanzas River DBN 4A (LLNR 18100) And DBN 4B (LLNR 18105), approx 20 yds into channel	11427 42-01
FL East Coast	Matanzas River	Shoaling has been reported in the vicinity Matanzas River Buoy 81A (LLNR 39535) in approximate position 29-43-05N 081-14-45W. Shoaling to depths of 3 to 4 feet has been reported in the marked channel.	11485 07-01
FL East Coast	Ponce de Leon	Shoaling has been reported in the vicinity of Ponce de Leon Inlet. The following temporary buoys have been established to mark best water. Ponce de Leon Inlet Buoys 5A, 7A, and 10A.	11485 09-06
FL East Coast	Sebastian Inlet	A 207ft coastal freighter sank in approx position 26-0610N 080-01-15W.	11451 24-03
FL East Coast	Kissimee River	A Submerged piling has been reported in position 28-13-00.00N 081-23-00.000W in Lake Tohopekaliga, Osceola County, FL.	XXXX 35-04
FL East Coast	ST Lucie Inlet	Shoaling reported in the vicinity of St Lucie Inlet Buoy 4 (LLNR 10000), - Buoy 5 (LLNR 10125) - Buoy 6 (LLNR 10130) and - Buoy 7 (LLNR 10125)	11472 12-06
FL East Coast	St Lucie Inlet	Shoaling found in St. Lucie Inlet between Daybeacon 14 (LLNR 10160) and 16 (LLNR 10165) has been marked with a red temporary buoy 14A in position 27-09-54N 080-10-17.955W	11428 05-03
FL East Coast	Stuart	A tug and barge have sunk on east side of north/south jetty of St. Lucie Inlet. in approximate location 27-10-06N 080-08-58W.	11472 50-02
FL East Coast	Jupiter Inlet	An unlit mooring ball with letters "PBSC" in approx position 26-42.12N 080-01.54W	11466 29-03
FL East Coast	Singer Island	Shoaling has been reported in the vicinity of Singer Island Daybeacon 1 (LLNR 10211) A temporary unlighted buoy has been placed in AP 26-46-28.544N 080-02-24.413W	11472 08-06
FL East Coast	Lake Worth Inlet	Shoaling has been reported in Lake Worth Inlet in approximately position 26-46-21.064N 080-01-46.260W.	11472 39-02
FL East Coast	Boca Raton Inlet	Report of 5 ft steel mooring buoy anchored approx 220 yds southeast of Boca Inlet.	11467 17-02
FL East Coast	Boca Raton Inlet	Severe shoaling reported at the entrance to Boca Raton inlet.	11466 20-05
FL East Coast	Malloy Channel	Report of 80-100 ft black pipe obstructing channel 100 yds north of Miami Yacht Club	11467 21-02
FL East Coast	Miami River	Shoaling to an unknown depth has been reported NW of the 5th Street Bridge.	11467 11-01
FL East Coast	Biscayne Bay	Shoaling reported between Biscayne Bay Daybeacon 6A (LLNR 47820) and Biscayne Bay Daybeacon 9 (LLNR 47835).	11467 51-01
FL West Coast	Collier Bay	Dredge Pile reported near entrance to Collier Bay.	11431 20-05
FL West Coast	Capri Pass	Shoaling has been reported in vicinity of Capri Pass Light 2 (LLNR 16945) and between Capri Pass Light 3 (LLNR 16955) and Capri Pass Light 4 (LLNR 16960).	11430 24-05
FL West Coast	Lake Okeechobee	A palm tree was reported obstructing the channel 200 yards south of Lake Okeechobee (Rt2) DBN (LLNR 51550).	11428 45-02
FL West Coast	South Seas	Shoaling between South Seas Plantation Daybeacon 5 (LLNR 55730 Plantation and South	11427 12-01

FL West Coast	Fort Myers	Seas Plantation Daybeacon 21 (LLNR 55880). A partially submerged piling only visible at low tide approximately 5 ft away from Cape Coral Rim Channel DBN 65 (LLNR 53190) located in 26-33-49.773N 081-55-59.117W.	11427 50-02
FL West Coast	Matanzas Pass	Shoaling at Matanzas Pass DBN 3 (LLNR 18090) extending to – LIGHT 7 (LLNR 18120)	11427 03-03
FL West Coast	New Pass	Extensive shoaling exist from New Pass LT NP (LLNR 1345/21585 to New Pass Channel LT 7 (LLNR 21620), water depths are constantly changing and surf breaking.	11425 36-05
FL West Coast	Venice Inlet	Shoaling reported to 8 feet between VENICE INL-SIESTA KEY LT 3 (LLNR 57840) and – LT 5 (LLNR 57860).	11425 31-00
FL West Coast	Cortez Bay	Shoaling reported encroaching into the channel in the vicinity of Siesta Key-Tampa Bay Buoy 39 (LLNR 59345).	11425 03-03
FL West Coast	Siesta Key-TB	Shoaling reported in vicinity of Siesta Key-Tampa Bay Buoy 43. Shoaling extends Channel ward approximate 15yds. A depth of 5 Feet has been reported at mean-low water.	11425 07-06
FL West Coast	Charlotte Harbor	Severe shoaling has been reported in the vicinity of Charlotte Harbor Buoy 3A (LLNR 19915)	11425 31-06
FL West Coast	Tampa Bay	Shoaling reported in position 27-27.55.800N 082-41-30.137W, 145 yards from Siesta Key-Tampa Bay DBN 49 (LLNR 59570).	11425 44-01
FL West Coast	Tampa Bay	Shoaling reported in position 26-48.677N 082-15.825W between Gasparilla Snd DBN 1 (LLNR 21420) and Gasparilla Sound DBN 3 (LLNR 21425).	11425 41-02
FL West Coast	Tampa Bay	Shoaling reported between New Pass Buoy 3A (LLNR 21595) and New Pass Light (LLNR 21620), extending 20 yards channel ward.	11425 40-04
FL West Coast	Tampa Bay	Shoaling in vicinity of Sunshine Skyway Channel between DBN 2 (LLNR 60320), and Sunshine Skyway Channel DBN 3 (LLNR 60325). Also in vicinity of Sunshine Skyway Channel near DBN 2 (LLNR 60320). At low tide, best-marked water depth is only 4.5 ft.	11416 05-02
FL West Coast	Boca Ciega Bay	No Wake sign reported destroyed 100 yards south of Pinellas BaywayStructure "C" Bridge located below the waterline in approximate position 27-42.5N, 82-43.3W.	11411 03-03
FL West Coast	Pass-A-Grille	Partially submerged piling reported 50 yds off east side of Mud Key in north Pass-A-Grille.	11411 24-03
FL West Coast	Tampa Bay	195FT sunken barge approximately 11NM NW of Egmont Key	11412 52-05
FL West Coast	Tampa Bay	Shoaling reported in the vicinity of Pithlachascotee River Light 16 (LLNR 26585)	11409 20-06
FL West Coast	New Port Richey	Sunken 50FT fishing vessel approximately 312 degrees T at 2,700 yards from Cotee River Light 1 (LLNR 26505) Charts: 11409 and 11411.	11411 52-05
FL West Coast	Tampa Bay	Report of shoaling encroaching southward from Anclote Key past Anclote Anchorage South Entrance Daybeacon 3X. Depth less than published depth of 9 feet	11411 07-06
FL West Coast	Tampa Bay	A submerged 15 foot plastic piling reported approximately 80 yards bearing 225 degrees from Tampa Bay Cut F Channel Lighted Buoy 10F (LLNR 22845).	11416 30-02
FL Okeechobee	Route 1	Obstruction/Shoaling in vicinity DBN 4 (LLNR 51200)	11428 46-00
SC AICW	Winyah Bay	Shoaling near (STM 363), 1.0 miles N (Town Creek) in McClellanville, SC.	11534 31-00
SC AICW	Elliott Cut	Shoaling between Stono Riv DBN 19 (LLNR 3845) at the intersection of Elliott Cut.	11522 31-00
SC AICW	Dawho River	Continued shoaling to less than 6.5 feet in the Dawho River, near (STM 497). Encroaching 9 foot Shoal extends 20 yards into the channel from LT 110 through B 113.	11518 17-01
SC AICW	Little River	Shoaling near (STM 363), 1.0 miles N of Little Riv-Winyah Bay DBN 24B (LLNR 33725.5).	11518 31-00
SC AICW	Ashepoo River	Heavy shoaling near (STM 511) FENWICK CUT LT 162 (LLNR 35140).	11518 31-00
SC AICW	Ashepoo River	Shoaling between Ashepoo/Coosaw Cutoff Temporary Buoys 184A & - B 185 And starting in the channel near Ashepoo/Coosaw Cutoff Light 184	11518 18-01
SC AICW	Winyah Bay	Shoaling near Winyah Bay-Charleston Harbor DBN 118 (LLNR 34515), and DBN 119 (LLNR 34520) (STM 511) to 8.5 feet.	11518 31-00
SC	AICW	Shoaling to a depth of 8 feet has been reported in the vicinity of Winyah Bay-Charleston Harbor Daybeacon 37 (LLNR 34240).	11518 02-01
SC	AICW	Shoaling has been reported in the vicinity of Little River-Winyah Bay DBN 22A (LLNR 33710.5), the following temporary Buoys have been established to mark the shoal; Little River-Winyah Bay B 24A (LLNR None) Little River-Winyah Bay B 24B (LLNR None) and Little River-Winyah Bay DBN 25 (LLNR 33735) in approximate position 33-44.1N 078-52.9W.	11534 02-01
FL AICW	St Johns River	Shoaling has been observed between Gunnison Cut DBN 73 (LLNR 38270) and Sister Creek (LLNR 38300). Water depth reported 7 feet.	11489 06-04
FL AICW	Matanzas River	Shoaling has been reported north of Matanzas River Bridge, west side. Depth of 5 feet reported in position 29-33-45.571N 081-11-06.481W	11485 09-05
FL AICW	Matanzas Inlet	Shoaling has been reported in the vicinity of Matanzas River Buoy 80A (LLNR 39525.5) to a depth of 4 feet at low tide.	11485 10-06
FL AICW	Mantanzas Inlet	Shoaling has been reported in the vicinity of Mantanzas River Buoy 81A (LLNR 39535) in Position 29-43-10.198N 081-14-44.717W	11485 20-06
FL AICW	Ponce de Leon Cut	Shoaling has been reported in the vicinity of Ponce de Leon Cut Junction DBN (40615) to Ponce de Leon Cut DBN 18 (LLNR 40610). Water depth in marked channel is 6 feet at low tide.	11485 10-06
FL AICW	Tolomato River	USACE survey has reported shoaling from PABLO CREEK LT 46 (LLNR 38610) to TOLOMATO RIVER LT 3 (LLNR 38625).	11489 31-01
FL-AICW	Indian River (SS)	Shoaling reported between Indian River (SS) Daybeacon 128 (LLNR 44135) and –Daybeacon 130 (LLNR 44145).	11472 16-06
FL-AICW	Indian River (SS)	Shoaling exist across entire channel between Indian River (SS) Daybeacon 184 (LLNR 45085) and Daybeacon 186 (LLNR 45110). Reported depths of 5 feet at low tide.	11485 31-00
FL AICW	Ponce de Leon	Shoaling between Ponce de Leon Cut DBN 2 (LLNR 40500) and DBN 3 (LLNR 40505).	11485 31-00
FL AICW	Ponce de Leon	Ponce de Leon Cut Daybeacon 6 (LLNR 40530) relocated due to shoaling.	11485 10-06

FL AICW	Boynton Inlet	Heavy shoaling near Lake Worth DBN 46 (LLNR 47015).	11467 31-00
FL-AICW	Hillsboro Inlet	Shoaling has reported in Ocean Park Channel between Daybeacon 1 (LLNR 47040) and Daybeacon 8 (LLNR 47075).	11467 08-06
FL-AICW	Lake Worth inlet	Shoaling has been reported along the north side of Entrance Channel	11474 35-04
FL-AICW	Bakers Haulover	Extensive shoaling has been reported in between Biscayne Bay Daybeacon 6 (LLNR 47815) and Biscayne Bay Daybeacon 11 (LLNR 47840)	11467 50-04
FL AICW-	Biscayne Bay	The slow speed sign 50 yds south of the east span of Venetian Causeway is damaged and partially submerged.	11468 32-03
FL AICW	Venice Inlet	Shoaling 600 yards North and 200 yards South of the Albee Bridge.	11425 31-00
PR	Vieques Snd Culebra	A submerged offshore mariculture site has been established 2 miles southeast of Culebra Island and is outlined by coordinates 18-16.67N 065-20W, 18-16.4N 065-19.72W	25650 32-02

A. BRIDGE CONSTRUCTION/REPAIR

Location	Type of Work	EST Comp Date	Bridge	Ref LNM
SC-Charleston Hbr-Cooper Riv	Bridge Construction	NOV 07	Grace Memorial Bridge	48-02
SC-Charleston Hbr-Cooper Riv-Town Cr	Bridge Construction	NOV 07	Silas N. Pearman Bridge	48-02/34-06
SC-Charleston Hbr-Cooper Riv Bridges	Demolition	NOV 07	Grace Memorial/Pearman	34-05/34-06
GA-Turtle Riv/Gibson Cr	Bridge Construction	OCT 09	I-95 Bridges	49-06
FL-St. Johns Riv-Jacksonville	Demolition	MAR 07	Fuller Warren Bridge	47-06
FL-St. Johns Riv-Jacksonville	Bridge Painting	OCT 07	Matthews Bridge	05-07
FL-St. Johns Riv-Trout Riv	Bridge Construction	MAR 08	I-95 Bridge	12-05
FL-ICW-Jacksonville Bch	Bridge Construction	FEB 09	McCormick (Beach Blvd)	34-06
FL-ICW-St. Augustine	Bridge Construction	JAN 08	Bridge of Lions Bridge	21-05/08-07
FL-ICW-Indian Riv-Pineda	Bridge Repairs	APR 07	Pineda Cswy Bridge A	34-06
FL-ICW-Banana Riv-Sykes Cr	Bridge Repairs	APR 07	SR 528	47-06
FL-ICW-W Palm Bch	Bridge Repairs	MAR 07	PGA Blvd Bridge	23-05
FL-ICW-Hollywood	Bridge Repairs	JUL 07	Hollywood Blvd Bridge	15-06/34-06
FL-ICW-Biscayne Bay-Indian Ck	Bridge Repairs	JUN 07	E 63 rd St Bridge	27-06/34-06
FL-ICW-Biscayne Bay-Indian Ck Canal	Bridge Repairs	MAR 07	W 63 rd St Fixed Bridge	36-06
FL-ICW-Caloosahatchee Riv	Bridge Repairs	FEB 07	Wilson Piggot Bridge	03-07
FL-ICW-Okeechobee-Sanibel	Bridge Construction	JUN 07	Sanibel Cswy Bridge	27-05
FL-Anna Maria Sound-Bimini Bay	Bridge Construction	APR 07	Key Royale Dr Bridge	23-06
FL-Johns Pass	Bridge Construction	JAN 09	Johns Pass Bridge	07-06/08-06

B. DRAWBRIDGE STATUS SUMMARY

The following is a list of known drawbridge discrepancies, restrictions, and closures in navigable waters of the Seventh Coast Guard District. Additional information regarding bridges can be found in Volume 4 (Cape Henry to Key West) or volume 5 (Gulf of Mexico, Puerto Rico and Virgin Islands) of the U.S. Coast Pilot, 33 CFR 117, or by calling (305) 415-6743. Unless otherwise noted in the date column, the described status will be in effect until further notice. Mariners knowing of bridge activities not listed below are urged to notify the nearest Coast Guard unit.

BRIDGE	LOCATION	DATE	STATUS	REF
PGA	ICW, W Palm Bch, FL	Until Mar 31, 07	Single-leaf Ops/Special Regs	42-06/04-07
Hollywood Blvd	ICW, Hollywood, FL	Until Jul 27, 07	Single-leaf Ops/Special Regs	42-06/03-07
63 rd St	Indian Cr, Miami, FL	Until Jun 19, 07	Hourly Openings/Special Regs	39-06/02-07

C. BRIDGE INFORMATION.

GEORGIA – BRUNSWICK HARBOR – SIDNEY LANIER BRIDGE: Marine Safety.

The horizontal clearance of the Sidney Lanier Bridge as charted has been reported to be inaccurate. The navigation lighting on the main structure has also been reported to be inaccurate. Mariners should exercise extreme caution when passing through this structure. The Coast Guard is investigating.

Ref: LNM 06 through 07-07

Chart: 11506

FLORIDA – ST JOHNS RIVER – JACKSONVILLE – FULLER WARREN BRIDGE: Bridge Demolition.

The Captain of the Port Jacksonville advises all mariners that the navigable channel in the vicinity of the Old Fuller Warren Bridge will be periodically restricted for ongoing bridge demolition until March 31, 2007. The navigable channel will be restricted to a 100 foot horizontal clearance from 7:00 a.m. to 5:30 p.m. during that time. Mariners requiring more than 100 foot horizontal clearance may request a full channel opening by contacting the Tug ST JOHNS and/or Tug BANTAM on VHF-FM channel 13, two hours in advance. All marine traffic should take caution when passing through this portion of the St. Johns River.

Ref: LNM 46-06 through 07-07

Chart: 11491

FLORIDA – ST JOHNS RIVER – JACKSONVILLE – MATTHEWS BRIDGE: Painting Operations.

The vertical clearance of the Matthews Bridge, St Johns River mile 21.4, Jacksonville, Florida has been reduced by seven feet, due to scaffolding installation until February 23, 2007. The vertical clearance of this bridge will be reduced by feet until October 31, 2007, during this painting operation.

Ref: LNM 05 through 07-07

Chart: 11491

FLORIDA – ST JOHNS RIVER – JACKSONVILLE – TROUT RIVER BRIDGE: Bridge Demolition.

Hal Jones Contractor has advised the Coast Guard that demolition of the Trout River Bridge will start on December 21, 2006 and will continue for several months. This activity is not affecting the navigable channel at this time. Future updates will be provided via Broadcasts and Local Notice to Mariners.

Ref: LNM 51-06 through 07-07

Chart: 11491

SOUTH CAROLINA – ATLANTIC INTRACOSTAL WATERWAY - BEAUFORT RIVER TO ST. SIMONS SOUND – SKULL CREEK – SC HIGHWAY 278 BRIDGE: Bridge Repairs.

The South Carolina Department of Transportation is conducting bridge repairs on the fender system of the SC Highway 278 Bridge over Skull Creek, Intracoastal Waterway mile 557.6, Hilton Head, South Carolina until May 1, 2007. There is a barge on scene monitoring VHF-FM channels 13 and 16. All mariners are advised to use the north side of the channel and exercise caution while transiting this area.

Ref: BNM 028-07-CHA and LNM 05 through 07-07
Chart: 11507

CG File: 1110

FLORIDA – ATLANTIC INTRACOASTAL WATERWAY – ST AUGUSTINE – BRIDGE OF LIONS: Bridge Construction/Waterway Closures.

Due to the construction of the Bridge of Lions, Intracoastal Waterway mile 797.9, St. Augustine, Florida the waterway will be closed to navigation from 8:00 a.m. to 6:00 p.m. and from 8:00 p.m. to 6:00 a.m., February 19 through February 22, 2007 and February 26 through February 28, 2007.

Ref: LNM 18, 21-05 through 07-07

Chart: 11489

FLORIDA – ATLANTIC INTRACOASTAL WATERWAY – LAKE WORTH INLET TO JUPITER INLET – PGA BOULEVARD BRIDGE: Bridge Repairs/Update.

The PGA Boulevard Bridge (SR 786), Intracoastal Waterway mile 1012.6, West Palm Beach, Florida is on single-leaf operations until March 31, 2007. A double-leaf opening is available on the hour and half-hour with a two hour notice to the bridge tender

In mid-February through the end of March this bridge will be on single-leaf operations. The exact dates will be published in a future Local Notice to Mariners.

Ref: LNM 23-06 through 07-07 and BNM 276-05-MIA
Chart: 11467

CG File: 3132

FLORIDA – ATLANTIC INTRACOASTAL WATERWAY – WEST PALM BEACH TO MIAMI – HOLLYWOOD BOULEVARD BRIDGE: Bridge Construction.

The Hollywood Boulevard Bridge, Intracoastal Waterway mile 1072.2, Hollywood, Broward County, Florida will be on single-leaf operations on the hour and half-hour from April 17, 2006 to July 27, 2007 with a double-leaf opening will be available with a two-hour notice to the bridge tender, except as noted below. The horizontal clearance will be reduced to 50 feet during this time period.

The Hollywood Boulevard Drawbridge will be on single-leaf operations only on the hour and half-hour:
From January 22 through January 29, 2007, February 5 through February 12, 2007, February 14 through February 21, 2007, February 23 through March 2, 2007, March 5 through March 12, 2007 and from March 14 through March 21, 2007.
These restrictions are necessary to facilitate the containment system during the paint removal and re-painting of this bascule bridge.

LNM 15-06 through 07-07 and Federal Register Docket # CGD07-06-204
Chart: 11467

CG File: 2899

FLORIDA – ATLANTIC INTRACOASTAL WATERWAY – WEST PALM BEACH TO MIAMI – JULIA TUTTLE CAUSEWAY BRIDGE: Bridge Repairs.

M & J Construction has advised that due to upcoming bridge repairs there will be a barge located outside the channel limits on the northwest side of the Julia Tuttle Causeway Bridge across the Intracoastal Waterway mile 1087.1, Miami, Miami-Dade County, Florida. Mariners are requested to maintain slow speed through this area.

Ref: LNM 52-06 through 07-07
Chart: 11467

CG File: 3004

FLORIDA – ATLANTIC INTRACOASTAL WATERWAY – WEST PALM BEACH TO MIAMI – BISCAYNE BAY – INDIAN CREEK – 63rd STREET BRIDGE: Bridge Repairs.

The 63rd Street Bridge, Indian Creek mile 4.0, Miami Beach, FL will open a single-leaf on the top of the hour from 8:00 am to 5:59 p.m. and a double-leaf on the top of the hour between 6:00 p.m. and 12:10 a.m. until June 19, 2007. This bridge will be closed to navigation at all other times.

The 63rd Street Bridge will open on the hour for 10 minutes from 10:00 a.m. to 3:30 p.m. daily February 3 through February 14 and February 20 through 22, 2007 or as directed by Local Law Enforcement Officers, for the Miami Yacht and Brokerage Show.

Ref: LNM 27-06 through 07-07 and BNM 367, 454-06-MIA
Chart: 11467

CG File: 2362

FLORIDA – ATLANTIC INTRACOASTAL WATERWAY – MIAMI RIVER – SPRING GARDEN BRIDGE: Bridge Repairs.

The Spring Garden Bridge across the Seybold Canal, Miami River, Miami, Florida will be closed to navigation until approximately March 31, 2007. If you require passage through this bridge during construction hours, please provide two hours notice to:

Marcia Lopez - mlopez@miamigov.com , Phone # 305-416-1063
Zimri Prendes - zprendes@miamigov.com , Phone # 305-416-1284
Danette Perez - daperez@miamigov.com , Phone # 305-416-1286

Ref: LNM 03 through 07-07

Chart: 11467

FLORIDA – OKEECHOBEE WATERWAY – CALOOSAHATCHEE RIVER – SAN CARLOS BAY - SANIBEL CAUSEWAY BRIDGE: Bridge Construction.

Work continues on the Sanibel Causeway Bridge across the Caloosahatchee River, Sanibel, Lee County, Florida. Due to this bridge construction the vertical clearance has been reduced to 68 feet.

Ref: BNM 1486-06-STP and LNM 25-05 through 07-07

Chart: 11428

FLORIDA – OKEECHOBEE WATERWAY – CALOOSAHATCHEE RIVER – SAN CARLOS BAY - SANIBEL CAUSEWAY BRIDGES, Span A and C: Temporary Safety Zone.

Sec. 165.T07-219 Safety Zone; Ft. Myers Beach, Florida.

- (a) Regulated area. The Coast Guard is establishing a temporary safety zone on the waters of San Carlos Bay, Florida, in the vicinity of the Sanibel Island Bridge span "A". This safety zone includes all waters from surface to bottom, within a 400 foot radius extending from the center portion of span "A" at the following coordinates: 26[deg]28 59" N, 082[deg]00 52" W. All coordinates referenced use datum: NAD 83.
- (b) Definitions. The following definitions apply to this section: Designated representative means Coast Guard Patrol Commanders including Coast Guard coxswains, petty officers and other officers operating Coast Guard vessels, and federal, state, and local officers designated by or assisting the Captain of the Port Sector St. Petersburg, Florida, in the enforcement of regulated navigation areas and safety and security zones.
- (c) Regulations. In accordance with the general regulations in Sec. 165.23 of this part, no person or vessel may anchor, moor or transit the Regulated Area without the prior permission of the Captain of the Port Sector St. Petersburg, Florida, or his designated representative.
- (d) Dates: This rule is effective from 6 a.m. on October 16, 2006, through 9 p.m. on March 31, 2007.
- (e) Enforcement period. This regulated area will only be enforced during specific periods between the dates specified in paragraph (d). The Coast Guard does not know the exact dates of the construction operations at this time, however Sector St. Petersburg will announce each enforcement period by issuing Broadcast Notice to Mariners 24 to 48 hours prior to the start of enforcement. Additionally, on-scene notice will be provided by Coast Guard or other local law enforcement maritime units enforcing the safety zone.

The Coast Guard is establishing a temporary safety zone on the water of San Carlos Bay, Florida in the vicinity of the Sanibel Island Bridge span "C" while bridge construction is conducted. This rule is necessary to ensure the safety of the construction workers and mariners on the navigable water of the United States. This rule is effective through 9 p.m. on June 30, 2007.

Documents indicated in this preamble as being available in the docket are part of docket [COTP 06-220] and are available for inspection or copying at Coast Guard Sector St. Petersburg, Prevention Department, 155 Columbia Drive, Tampa, Florida 33606-3598 between 7:30 a.m. and 3:30 p.m., Monday through Friday, except Federal holidays.

For Further Information Contact: Waterway Management Division at Coast Guard Sector St. Petersburg, (813) 228-2191, Ext. 8307.

Sec. 165.T07-220 Safety Zone; Ft. Myers Beach, Florida.

- (f) Regulated area. The Coast Guard is establishing a temporary safety zone on the waters of San Carlos Bay, Florida, in the vicinity of the Sanibel Island Bridge span "C". This safety zone includes all waters from surface to bottom, within a 400 foot radius extending from the center portion of span "C" at the following coordinates: 26[deg]27-416" N, 082[deg]02-083" W. All coordinates referenced use datum: NAD 83.
- (g) Definitions. As used in this section. Designated representative means Coast Guard Patrol Commanders including Coast Guard coxswains, petty officers and other officers operating Coast Guard vessels, and federal, state, and local officers designated by or assisting the Captain of the Port Sector St. Petersburg, Florida, in the enforcement of regulated navigation areas and safety and security zones.

- (h) Regulations. In accordance with the general regulations in Sec. 165.23 of this part, no person or vessel may anchor, moor or transit the Regulated Area without the prior permission of the Captain of the Port Sector St. Petersburg, Florida, or his designated representative.
- (i) Dates: This rule is effective from 8 a.m. on November 1, 2006, through 9 p.m. on June 30, 2007.
- (j) Enforcement period. This regulated area will only be enforced during specific periods between the dates specified in paragraph (d). The Coast Guard does not know the exact dates of the construction operations at this time, however Sector St. Petersburg will announce each enforcement period by issuing Broadcast Notice to Mariners 24 to 48 hours prior to the start of enforcement. Additionally, on-scene notice will be provided by Coast Guard or other local law enforcement maritime units enforcing the safety zone.

Ref: LNM 49-06 through 07-07 and Federal Register Docket # COTP St. Petersburg-06-220

Chart: 11428

FLORIDA – GULF INTRACOASTAL WATERWAY – CHARLOTTE HARBOR TO TAMPA BAY – DONA BAY – SHAKETT CREEK: US 41 BRIDGE: Bridge Construction.

The Coast Guard Captain of the Port St. Petersburg has advised that the Shakett Creek waterway under the US 41 Bridge, Sarasota County, Florida is closed to navigation until March 31, 2007, due to bridge construction.

Ref: LNM 52-06 through 07-07

Chart: 11425

FLORIDA – GULF INTRACOASTAL WATERWAY – SIESTA KEY TO TAMPA BAY – STICKNEY POINT BRIDGE: Final Rule.

The Coast Guard is changing the operating regulation governing the operation of the Stickney Point (SR 72) Bridge across the Gulf Intracoastal Waterway, mile 68.6, Sarasota, Florida. The rule will require the drawbridge to open on the hour, twenty minutes past the hour and forty minutes past the hour.

The rule is effective February 26, 2007. Comments and material received from the public, as well as documents indicated in this preamble as being available in the docket, are part of dockets (CGD07-06-130) and are available for inspection or copying at Commander (dpb), Seventh Coast Guard District, 909 SE 1st Avenue, Room 432, Miami, Florida 33131-3050 between 8 a.m. and 4:30 p.m., Monday through Friday, except Federal Holidays. For additional information contact Michael.b.lieberum@uscg.mil.

Docket Number (CGD07-06-130)

Chart: 11411

FLORIDA – GULF INTRACOASTAL WATERWAY – SIESTA KEY TO TAMPA BAY – ANNA MARIA SOUND: Final Rule.

The Coast Guard is changing the operating regulations governing the Cortez (SR 684) Bridge and the Anna Maria (SR 64) (Manatee Avenue West) Bridge across the Gulf Intracoastal Waterway, miles 87.4 and 89.2 in Anna Maria, Manatee County, Florida. This rule will require the drawbridges to open on signal, except during daytime hours when the bridge will be on a 30-minute schedule during the winter months and a 20-minute schedule for all other months.

This rule is effective February 21, 2007. Comments and material received from the public, as well as documents indicated in this preamble as being available in the docket, are part of dockets (CGD07-05-097) and (Public Meeting CGD07-06-012) and are available for inspection or copying at Commander (dpb), Seventh Coast Guard District, 909 SE 1st Avenue, Room 432, Miami, Florida 33131-3050 between 8 a.m. and 4:30 p.m., Monday through Friday, except Federal Holidays. For additional information contact Michael.b.lieberum@uscg.mil.

Ref: LNM 04 and 07-07 and Docket Number (CGD07-05-097)
Chart: 11411

CG File: 2252/2919

SAFE BOATING AND SEAMANSHIP PROGRAMS

For addition information on CG Auxiliary Public Education Boating Programs, contact 1-800-336-2628 or <http://www.cgaux7.org/>

HOST	DATES	TIME	LOCATION
U.S. Coast Guard Auxiliary Flotilla 42 (321) 773-7599	Continuous Boating Skills and Seamanship	7:30 p.m.– 9:30 p.m. (Tuesdays & Thursdays) 6 Weeks, 12 Lessons	Palm Bay Community Ctr 1502 Port Malabar Blvd Palm Bay, FL
U.S. Coast Guard Auxiliary Flotilla 78 (727) 360-7496	Continuous Boating Skills and Seamanship	7:30 p.m.– 9:30 p.m. (Mondays) 13 Weeks	Webster Community Ctr 1500 Passe Grille Blvd St Petersburg, FL
U.S. Coast Guard Auxiliary Flotilla 79 (813) 855-6997	Continuous Boating Skills and Seamanship	7:30 p.m.– 9:30 p.m. (Wednesdays) 13 Weeks	5108 Gandy Blvd Salty Sol Boat Ramp Tampa, FL
U.S. Coast Guard Auxiliary Flotilla 7-16 (727) 323-5950	Continuous Boating Skills and Seamanship	7:30 p.m.– 9:30 p.m. (Tuesdays) 13 Weeks	USCG Auxiliary Bldg 3120 Miriam St South Gulfport, FL
U.S. Coast Guard Auxiliary Flotilla 51 (561) 844-3114	Continuous Boating Skills and Seamanship	7:30 p.m.– 9:30 p.m. (Tuesdays & Thursdays) 6 Weeks, 12 Lessons	CG Aux Bldg, P Foster Park 900 E. Blue Heron Blvd Riviera Beach, FL
U.S. Coast Guard Auxiliary Flotilla 55 (561) 585-8918	Continuous Boating Skills and Seamanship	7:00 p.m.– 9:00 p.m. (Mondays & Wednesdays) 6 Weeks, 12 Lessons	Santaluces High School Lawrence Road Lantana, FL
U.S. Coast Guard Auxiliary Flotilla 52 (772) 744-3876	Continuous Boating Safety Program	9:00 a.m.– 5:00 p.m. (Last Saturday of Each Month)	CG Aux Building Jupiter Lighthouse Park Jupiter, FL
U.S. Coast Guard Auxiliary Flotilla 81 (941) 761-4303/761-7393	Continuous Boating Skills and Seamanship	7:00 p.m.– 9:00 p.m. (Tuesdays & Thursdays) 4 Weeks	CG Aux Bldg, G.T.Bray Park 5801 53 rd Ave Court W Bradenton, FL
U.S. Coast Guard Auxiliary Flotilla 14-08 (904) 721-1346	Continuous Boating Safety Program	7:30 a.m.– 5:00 p.m. (Saturdays)	Stellar Building 2900 Hartley Road Jacksonville, FL
U.S. Power Squadron Fort Lauderdale (954) 523-3577	Continuous Basic Safe Boating Course	7:00 p.m. – 9:00 p.m. (1 st Monday of each month)	Lauderdale Marine Ctr 2029 SW 20 th Street Fort Lauderdale, FL
U.S. Coast Guard Auxiliary Flotilla 11-1 (727) 469-8895	Continuous America's Boating Course	7:30 p.m. – 9:30 p.m. (Mondays and Thursdays)	Clearwater Comm Sailing Ctr 1001 Gulf Blvd Sand Key (Clearwater), FL
U.S. Coast Guard Auxiliary Flotilla 38 (954) 915-0667	February 15, 2007 Boating Skills and Seamanship (10 Lessons)	7:30 p.m. – 9:30 p.m. (Tuesdays and Thursdays)	Plantation Community Center North Entrance Broward Mall University Dr and Broward Blvd Plantation, FL

Programs are free; there is a nominal fee for text workbooks, etc.



**U. S. Department of Homeland Security
U. S. Coast Guard Sector Charleston
Marine Safety Information Bulletin**



MSIB 049-06

10 MAY 2006

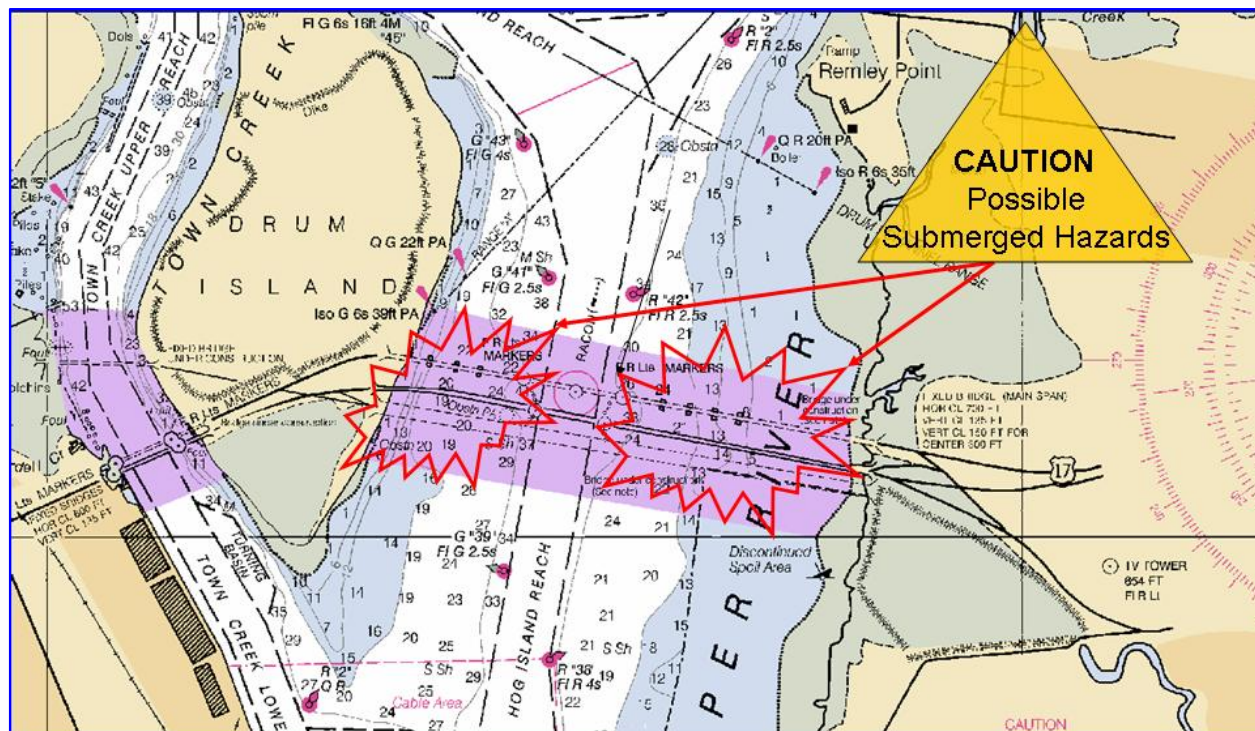
**POSSIBLE SUBMERGED HAZARDS/DEMOLITION DEBRIS IN COOPER RIVER
SHALLOWS FOR DURATION OF GRACE AND PEARMAN BRIDGE DEMOLITION**

Boaters are advised to stay in the main channel when transiting under the new Ravenel Bridge on the Cooper River. The South Carolina Department of Transportation and their demolition contractor are in the process of removing the remaining foundations for the Grace and Pearman bridges. This project will continue into 2007. During this period, there is the possibility of both partially submerged hazards and demolition debris in the areas outside the main channel. The contractor's work area will be marked with temporary buoys, but these buoys may not be visible at night. To avoid hazards boaters should transit only through the main Cooper River channel (HOG ISLAND REACH) or should consider using Town Creek channel as an alternate route.

Boaters are also reminded to obey Navigation Rule 9 and give large ships the right of way while in or planning to cross the main channel. Vessels less than 20 meters long, and sailing vessels, shall not impede the passage of a vessel that can safely navigate only within a narrow channel.

The U.S. Coast Guard has designated the waters under the old and new bridges as a Regulated Navigation Area (shown below in purple). All vessels are prohibited from anchoring, mooring, or loitering within the regulated area, unless specifically authorized by the U.S. Coast Guard.

Boaters should contact Coast Guard Sector Charleston's 24x7 operations center on VHF channel 16 or via phone at (843) 724-7616 to report any concerns or ask any questions about this notice.



“You’re in Command. Please Boat Responsibly!”



Marine Safety Information Bulletin

Port of Palm Beach Draft Restriction – Update #1

Time: 1600/Date: September 11, 2006

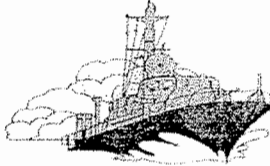
The Army Corps of Engineers has completed soundings of the Lake Worth Inlet entrance channel and found shoaling caused by Tropical Depression ERNESTO to be extensive throughout the area. The Captain of the Port has imposed a draft restriction of 28 feet at high water slack on all inbound vessel, 27 feet for vessels carrying oil products, and 29 feet for all outbound vessels. These restrictions will remain in effect until further notice. Palm Beach Harbor Pilots may impose additional restrictions as conditions warrant, in coordination with the Captain of the Port.

The Captain of the Port may be reached at telephone (305) 535-8701, or via Channel 16 VHF FM Marine Radio through Coast Guard Sector Miami.

KARL SCHULTZ
Captain, U.S. Coast Guard
Captain of the Port



US Army Corps
of Engineers
Jacksonville District

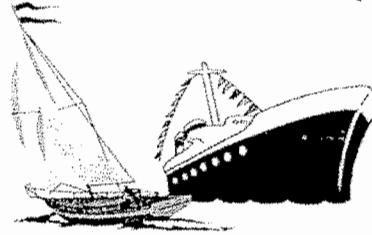


904-232-3974

NOTICE TO NAVIGATION INTERESTS



In reply refer to:
CESAJ-CO-OM
P.O. Box 4970
Jacksonville, FL 32232-0019



CESAJ-CO-OP (1130)

February 15, 2007

W.P. FRANKLIN LOCK

RESTRICTED LOCK OPERATIONS

OKEECHOBEE WATERWAY, FLORIDA

1. Due to the continued decline of water levels in Lake Okeechobee and the concern with increasing salinity levels in the Caloosahatchee River, the U.S. Army Corps of Engineers, Jacksonville District has received a request from the South Florida Water Management District to limit lockages through W.P. Franklin Lock. In honoring this request, mariners are hereby advised that effective, 16 February 2007, and until further notice, lockages will conform to the following schedule. Lock operators will utilize the lock chambers capacity for vessels and Lock Supervisor's discretion as needed. Lock operations outside of these scheduled hours will not be available.

RESTRICTED LOCKING SCHEDULE

East bound vessel lockages on even hours
commencing at 6:00 am and concluding at 8:00 pm.


West bound vessel lockages on odd hours
commencing at 7:00 am and concluding at 9:00 pm.

2. The above lock schedule will remain in effect until such time as a change in the lock operations is announced by subsequent Notice to Navigation Interests. Conditions will be evaluated on a weekly basis. Navigation interests should schedule their operations accordingly.

3. Additional information concerning Lake Okeechobee and the adjoining waterway may be obtained by accessing the Jacksonville District web site at <http://www.saj.usace.army.mil> and linking to the NAVIGATION and/or WATER MANAGEMENT selections from the Menu.

4. South Florida Water Management District point of contact regarding the issue of water quality in the Caloosahatchee River is Susan Sanders at (239) 229-7295. Army Corps of Engineers Point of Contact is the Clewiston Operations Office at (863) 983-8101.

FOR THE COMMANDER:


for Robert A. Bugg, P.E.
Chief, Construction-Operations
Division

Publication—National Ocean Service—U.S. Coast Pilot 5, Atlantic Coast: Gulf of Mexico, Puerto Rico, and Virgin Islands, 2006 (34th) Edition. Change No. 26.

Coast Pilot 5 34th Ed 2006

Corrections

Page 243-Paragraph 262: Delete.
(DB 13959)

Page 243-Paragraph 263, lines 6-12;
read:
feet in 1999. In 1982, submerged
obstructions were reported in the
entrance channel in about
26°38'14"N., 81°54'22"W. and
26°38'16"N., 81°54'27"W.
(DB 13959; NOS 11428)

Page 244-Paragraph 264, lines 5-13;
read:
dredged entrance channel. The
channel to the creek entrance and
the channel in the creek are well
marked by private daybeacons. A
highway bridge, about 0.3 mile
above the mouth has a 27-foot fixed
span with a clearance of 13 feet.
(DB 13959; NOS 11428)

Page 244-Paragraph 272: Delete.
(DB 11636)

Page 451-Paragraph 467, line 11
through Paragraph 468; read:
runoff. There are marinas and yacht
basins on the bayou above the
chemical plant.
(DB 12544; NOS 11322)

Page 451-Paragraph 473, lines 7-10;
read:
pier are E of the entrance channel.
(DB 12544)

Page 451-Paragraph 477, lines 6-12;
read:
mile NW of the highway bridge.
(DB 12544)

Page 452-Paragraph 479, lines 11-
14; read:
Channel.
(DB 12544; NOS 11322)

Page 459-Paragraph 55, lines 6-9;
read:
Creek.
(NOS 11322)

Page 506-Paragraph 386, lines 6-8;
read:
376.3W.
(DB 12544; NOS 11322)

Page 506-Paragraph 389, lines 8-13,
read:
miles above the mouth.
(NOS 11322)

Page 506-Paragraph 391, lines 3-7;
read:
the Freeport Entrance Channel.
(NOS 11322)

Page 506-Paragraph 394, read:
The town of **Freeport** is 2
miles up Old Brazos River from the
waterway junction at **Mile 395.1W.**
(See chapter 11 for more complete
information.)
(NOS 11322)

U.S. Department of
Homeland Security

United States
Coast Guard



Commander
Seventh Coast Guard District

909 SE 1st Ave.
Miami, FL 33131

Staff Symbol: (dpb)
Phone: (305) 415-6736
Fax: (305) 415-6763
Email: Brodie.E.Rich@uscg.mil

16591/3857/3858
February 9, 2007

PUBLIC NOTICE 27-06

The Commander, Seventh Coast Guard District has received an application from the Florida Department of Transportation, 1109 South Marion Avenue, Lake City, Florida 32025-8404, requesting approval of the location and plans to replace the existing two-lane fixed bridge with a new 3-laned fixed highway bridge across navigable waters of the United States.

WATERWAY AND LOCATION: Black Creek, mile 8.4, on County Road 209 at Rideout, Clay County, Florida (T5S/S9/R25E).

PROJECT DESCRIPTION: The proposed roadway improvement project which includes the bridge replacement will begin north of John Boy Creek, located south of the Black Creek CR 209 bridge and will end at Fireside Drive, located north of the CR 209 bridge. The main purpose of this roadway improvement project is to improve safety of all motorists operating vehicles on CR 209 and to accommodate project traffic demands. The existing CR 209 fixed bridge across Black Creek at mile 8.4 was completed on June 25, 1960. If no improvements are made to the existing bridge structure, the deficiencies of the bridge will potentially cause maintenance costs to increase and allow safety deficiencies related to barrier walls, bridge deck width, and restricted vehicular loadings. The existing structure is 380 feet in length, whereas the proposed permanent bridge will be 500 feet in length and 86.1 feet in width which will consist of two 12-foot travel lanes with a center keyhole lane (for turning), 5.5-foot shoulders and 6.5-foot sidewalks. The proposed bridge replacement project will utilize a temporary bridge to detour vehicular traffic while the existing bridge is being removed from the waterway and the new three-lane fixed bridge is being built. Although the temporary and proposed replacement bridges will be issued under two separate permit instruments, this public notice will solicit comments for both the temporary bridge and the proposed replacement bridge structures. The existing fixed bridge has a sufficiency rating of 7 and is structurally deficient as determined by a bridge inspection dated September 25, 2000. The existing bridge does not have emergency shoulders or crash tested barrier walls.

PUBLIC NOTICE 27-06

The proposed replacement bridge will be designed as a 45 mile per hour divided urban two-lane roadway with a center keyhole turn lane. Two-way vehicular traffic (one lane in each direction) will be maintained during construction by using a temporary bridge constructed west of the existing alignment. The proposed temporary detour bridge will be 30.9 feet in width and approximately 380 feet in length. The proposed roadway improvement project including the bridge replacement is approximately one mile. All parts of the existing bridge, not utilized in the new bridge, will be removed in their entirety, except for the support pilings which will either be removed in their entirety or cut off to a depth of 2 feet below the mud line. The proposed roadway improvement project is estimated to cost \$7.9 million.

NAVIGATIONAL CLEARANCES: Please note that the proposed temporary bridge would only provide a horizontal clearance of 30 feet between fenders aligned with the channel axis and would be in place for approximately three years while the existing bridge is being reconstructed. The horizontal clearance presently available to vessels is 40 feet between fenders aligned with the navigational channel axis. The navigation channel is skewed to the bridge structure and not perpendicular. When the bridge replacement project is completed and the temporary bridge is removed from the waterway, the horizontal clearance will be 40 feet between fenders aligned with the navigational channel axis.

Existing and Proposed Replacement Bridge Clearances -

Horizontal clearance: 40.0 feet between face to face of fenders aligned with the channel axis.

Vertical clearance: 20.7 feet above mean high water
21.5 feet above mean low water

Proposed Temporary Bridge Clearances -

Horizontal clearance: 30.0 feet between face to face of Fenders aligned with the channel axis.

Vertical clearance: 21.0 feet above mean high water
21.8 feet above mean low water

ENVIRONMENTAL IMPACTS: The Federal Highway Administration (FHWA) 227 North Borough Street, Tallahassee, Florida, is the lead federal agency for environmental processing and for compliance with the National Environmental Policy Act.

PUBLIC NOTICE 27-06

FHWA approved a Categorical Exclusion (CE) for this project on September 10, 2002. No substantial changes have occurred in the social economic, or environmental effects of the proposed action that would significantly affect the quality of the human environment, therefore, the original Categorical Exclusion determination remains valid without further reevaluations.

Although the proposed bridges would be located in the floodplain, they would not result in a significant encroachment. The 100-year flood elevation is 10.1 feet mean sea level (MSL), while elevation of the low steel is 22.1 feet MSL. Construction of the proposed CR 209 replacement bridge would involve the placement of 29,785 cubic yards of fill material below mean high water affecting 1.46 acres of wetlands and the construction of the proposed temporary detour bridge would involve the placement of 26,480 cubic yards of fill material below mean high water affecting 0.8 acres of wetlands. On December 8, 2006, the applicant applied to the St. Johns River Water Management District for issuance of their state Environmental Resource Permit which provides Water Quality Certification in accordance with Section 401 of the Clean Water Act, as amended, and a federal consistency determination under the Coastal Zone Management Act. The bridge project would not take land from, or significantly affect any parks, recreation areas, wildlife or waterfowl refuges, or historical or archaeological sites. Based on the Categorical Exclusion determination submitted for this project, the right-of-way acquisition for this project will necessitate the relocation of two residents; however, it appears that the proposed bridge project will have no impact on minority and low income populations. Noise and air pollution associated with the proposed bridge project would increase slightly during construction but will decrease after completion of the project. The project is in the air quality attainment area listed in the State Implementation Plan approved by the Environmental Protection Agency.

PUBLIC NOTICE 27-06

COMMENTS: Our final decision about whether to issue or deny these bridge permits for the proposed bridge replacement project including the temporary detour bridge will be based on the effects of the project on navigation and the environment. We are seeking comments about the temporary fixed bridge and the proposed permanent fixed replacement bridge. Interested agencies, organizations, and individuals are invited to express their views, in writing, giving specific reasons for support of, or opposition to, the proposed work. We especially encourage comments on the adequacy of the proposed navigational clearances, and on any adverse impacts to minority and low income populations.

All interested agencies and persons are requested to comment on whether the proposed bridge replacement project is likely to jeopardize the continued existence of any endangered or threatened species listed or proposed to be listed in 50 CFR 17.11 & 17.12, or result in the destruction or adverse modification of critical habitat that might be present in the area.

Comments should be sent to Commander (dpb), Seventh Coast Guard District, Room 432, 909 Southeast 1st Avenue, Miami, Florida 33131-3028, and should be mailed to arrive on or before 30 days from the date of this notice. Our project officer for this application is Mr. Brodie Rich and may be contacted at (305) 415-6736, by e-mail at Brodie.E.Rich@uscg.mil or by the above address.

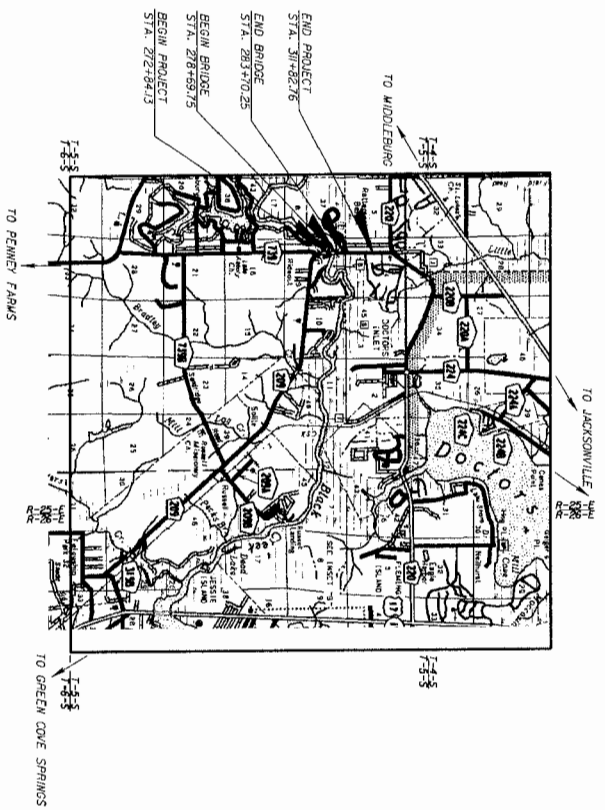
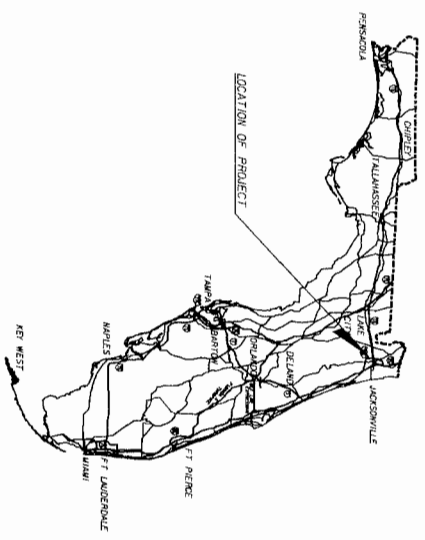
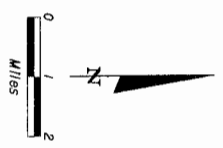
Map of location and plans attached: (4 sheets for the proposed permanent bridge and 4 sheets for the temporary bridge).

STATE OF FLORIDA
DEPARTMENT OF TRANSPORTATION

LOCATION MAP

FINANCIAL PROJECT ID 211560-2-52-01

CLAY COUNTY (71530)
COUNTY ROAD NO. 209



PROJECT LENGTH IS BASED ON E CONSTRUCTION

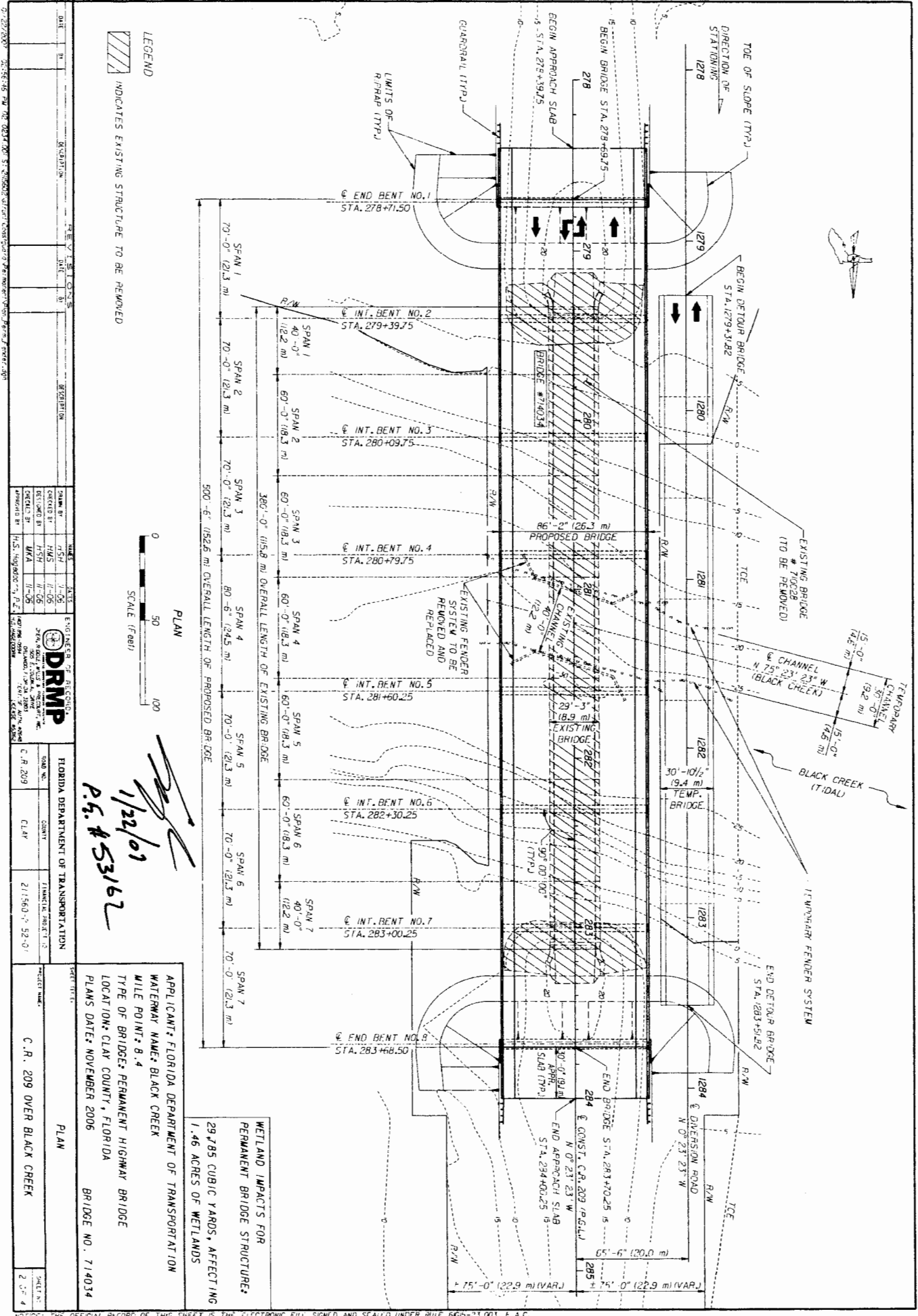
LENGTH OF PROJECT		
	LINEAR FEET	MILES
ROADWAY	3 398.30	0.643
BRIDGES	500.50	0.095
NET LENGTH OF PROJECT	3 898.80	0.738
EXCEPTIONS		
GROSS LENGTH OF PROJECT	3 898.80	0.738

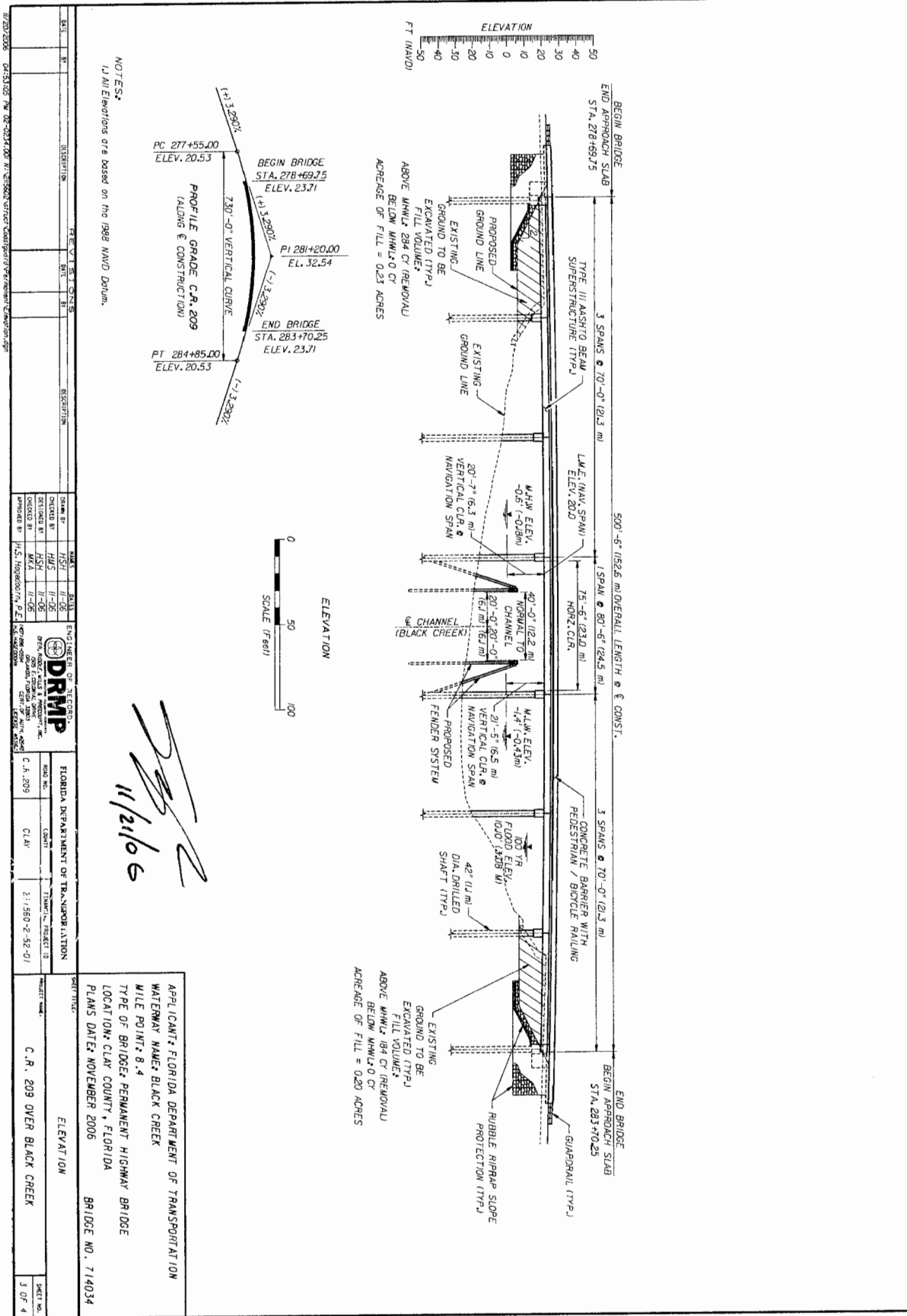
FDOT PROJECT MANAGER: CRAIG TEAL, P.E.

PLANS PREPARED BY:
DRMP
DRMP ENGINEERING & PLANNING, INC.
390 LAKE BLOOMINGDALE
SUITE 200
CLAY COUNTY, FLORIDA 32009
CERTIFICATE OF AUTHORIZATION NO. 2848
CONTRACT NO. C-78647
VENUE NO. 557191500
NOTE: THE SCALE OF THESE PLANS MAY
VARY DUE TO REPRODUCTION.

E.O.R. SURV MAGEORNA, P.E.
P.E. NO. 5582
11/21/06

APPLICANT: FLORIDA DEPARTMENT OF TRANSPORTATION
WATERWAY NAME: BLACK CREEK
TYPE OF BRIDGE: PERMANENT HIGHWAY BRIDGE
LOCATION: CLAY COUNTY, FLORIDA
PLANS DATED: NOVEMBER 2006
PROJECT TITLE: LOCATION MAP

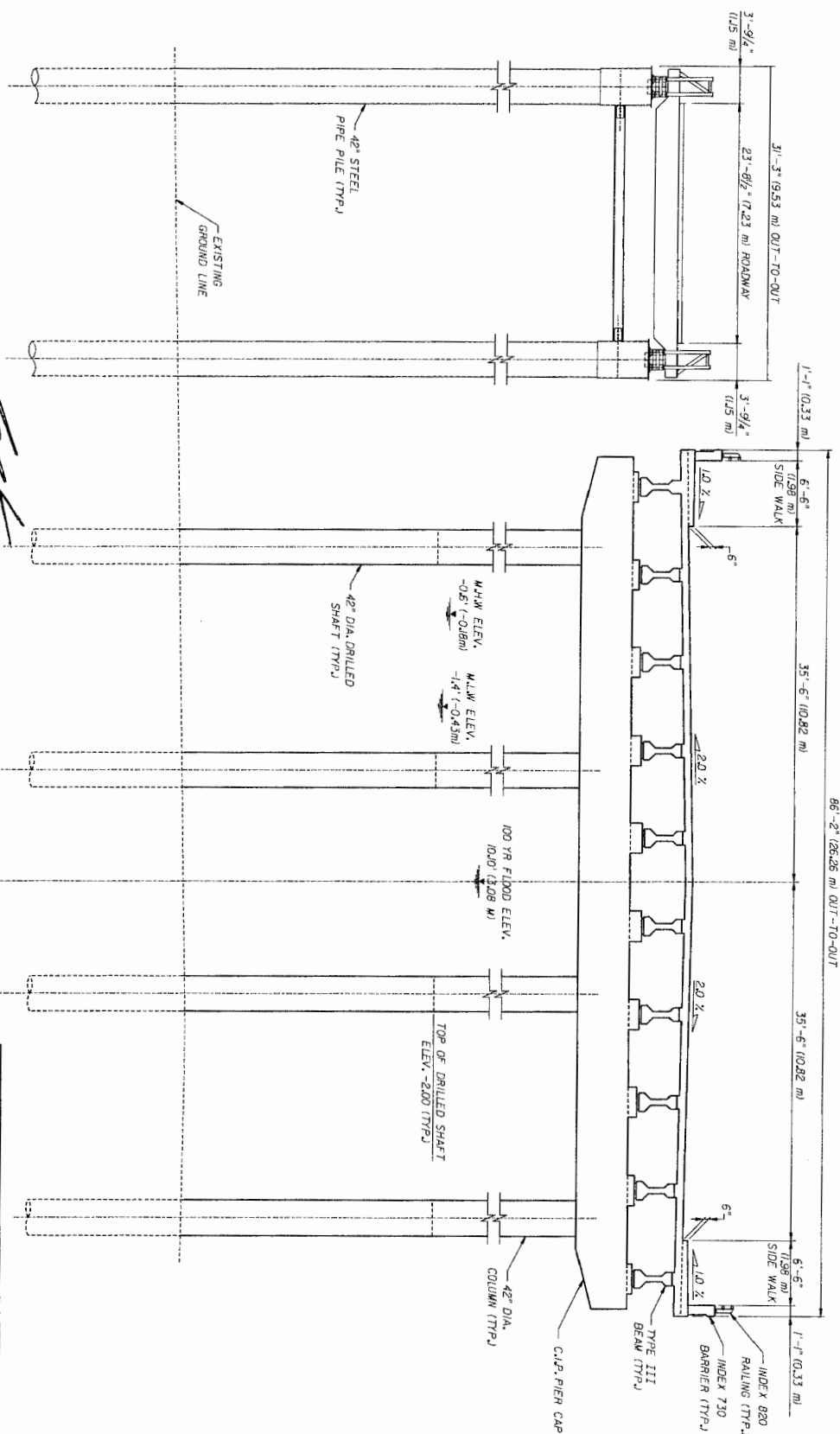




NOTICE: THE OFFICIAL RECORD OF THIS SHEET IS THE ELECTRONIC FILE SIGNED AND SEALED UNDER RULE 6005-23.003, F.A.C.

PIER ELEVATION AND SUPERSTRUCTURE SECTION
(PERMANENT BRIDGE)

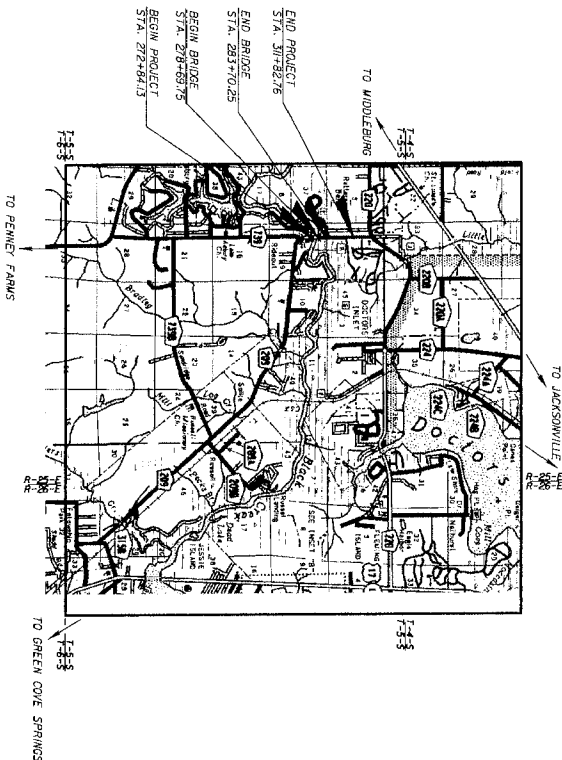
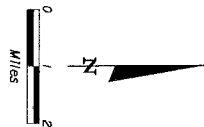
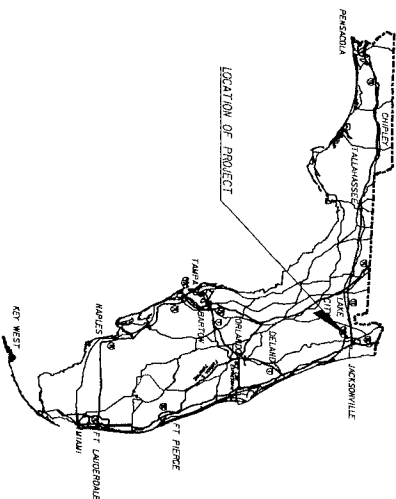
APPLICANT: FLORIDA DEPARTMENT OF TRANSPORTATION
WATERWAY NAME: BLACK CREEK
MILE POINT: 8.4
TYPE OF BRIDGE: PERMANENT HIGHWAY BRIDGE
LOCATION: CLAY COUNTY, FLORIDA
PLANS DATE: NOVEMBER 2006
BRIDGE NO. 714034

[illegible]

STATE OF FLORIDA
DEPARTMENT OF TRANSPORTATION

LOCATION MAP

FINANCIAL PROJECT ID 21/560-2-52-01
CLAY COUNTY (71530)
COUNTY ROAD NO. 209



PROJECT LENGTH IS BASED ON E CONSTRUCTION

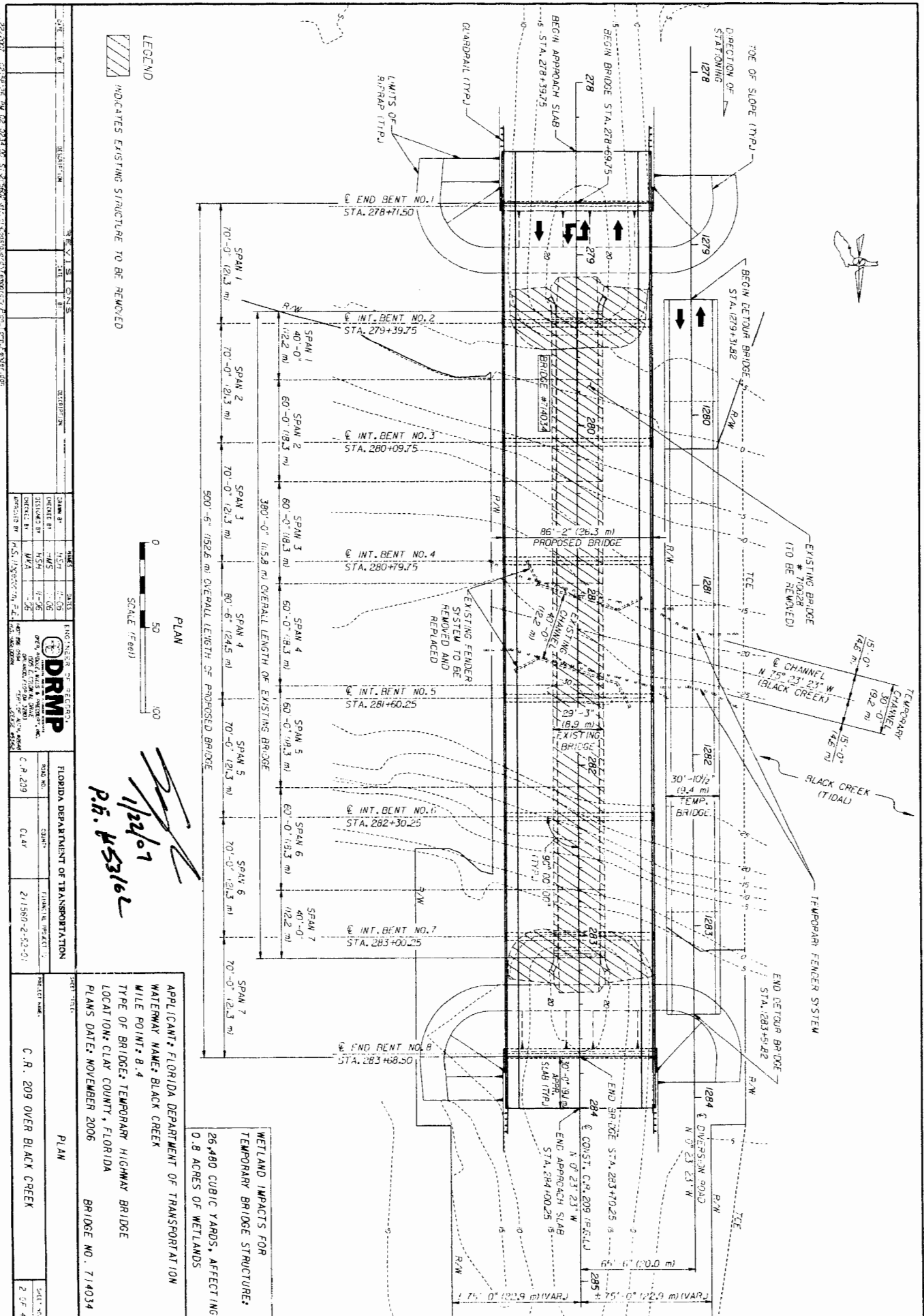
LENGTH OF PROJECT		
	LINEAR FEET	MILES
ROADWAY	3,398.30	0.643
BRIDGES	500.50	0.095
NET LENGTH OF PROJECT	3,898.80	0.738
EXCEPTIONS		
GROSS LENGTH OF PROJECT	3,898.80	0.738

FDOT PROJECT MANAGER: CRAIG TEAL, P.E.

PLANS PREPARED BY:
DRMP
DRMP ENGINEERING, INC.
1000 N. W. 10th Ave., Suite 100
Fort Lauderdale, FL 33304
TEL: 954.571.1000
FAX: 954.571.1001
WWW.DRMP-FL.COM
CERTIFICATE OF AUTHORIZATION NO. DR08
ORLANDO, FLORIDA 32804
NOTE: THE SCALE OF THESE PLANS MAY
HAVE CHANGED DUE TO REPRODUCTION.

APPLICANT: FLORIDA DEPARTMENT OF TRANSPORTATION	PROJECT NO.
WATERWAY NAME: BLACK CREEK	C.R. 209 OVER BLACK CREEK
WILE POINT: 8.4	SHEET NO.
TYPE OF BRIDGE: TEMPORARY HIGHWAY BRIDGE	1 OF 4
LOCATION: CLAY COUNTY, FLORIDA	
PLANS DATE: NOVEMBER 2006	
LOCATION MAP	

E.O.M.: SIMON HASEGORN, P.E.
P.E. NO. 43962
11/21/06

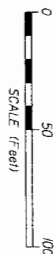


NOTICE: THE OFFICIAL RECORD OF THIS SHEET IS THE ELECTRONIC FILE SIGNED AND SEALED UNDER RULE 16B-23.003, F.A.C.

11/26/66

ACROW DETOUR BRIDGE
ELEVATION

SHEET NO. 3 OF 4



DETOUR BRIDGE ELEVATION

(FILL (Typ.)
(TO BE REMOVED
UPON CONSTRUCTION
OF PERMANENT BRIDGE)
NO PERMANENT FILL PROPOSED
FOR CONSTRUCTION OF
TEMPORARY BRIDGE

DATE		BY		DESCRIPTION		DATE		BY		DESCRIPTION	
<div style="text-align: center;"> ENGINEER OF RECORD DRMP FLORIDA DEPARTMENT OF TRANSPORTATION </div>											
PROJECT NO.				C.R. 209				SHEET NO.			
CONTRACT NO.				CLAY				SHEET NO.			
PROJECT NAME				C.R. 209 OVER BLACK CREEK				SHEET NO.			
DRAWN BY				HSH				DATE			
CHECKED BY				HWS				DATE			
DESIGNED BY				HWS				DATE			
CALCULATED BY				MVA				DATE			
APPROVED BY				H.S. Hopper, P.E.				DATE			

NOTICE: THE OFFICIAL RECORD OF THIS SHEET IS THE ELECTRONIC FILE SIGNED AND SEALED UNDER RULE 6G15-23.003, F.A.C.

