



Winnemucca BLM Fire Management Division

Lately, have you caught yourself thinking any of the following thoughts:

"I have been in this job too long and need new challenges."

"I would like to see some natural resource management getting done on the ground."

"Our unit is the "asbestos" unit and we never get any wildfires."

"I want to work with a highly motivated and professional Fire Leadership Organization."



Do you want a better career opportunity?

Well, the Winnemucca Fire Management Division is the answer to your thoughts!



Central Nevada Interagency Dispatch Center



Check USA JOBS <http://www.usajobs.gov> for job announcements!

The Winnemucca Division of Fire Management



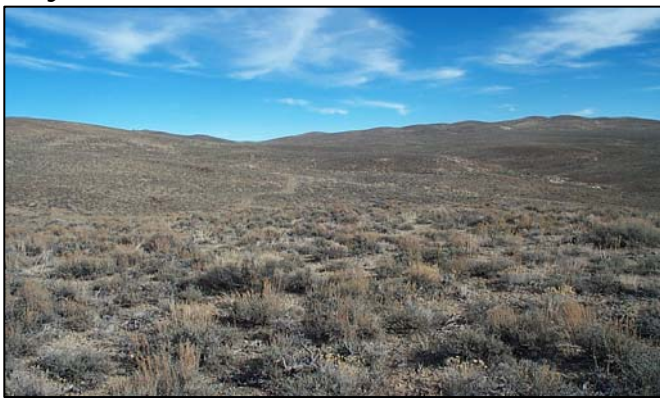
Over the past ten years, our the Winnemucca Field Office has averaged 115 wildfires and 125,000 acres burned. The Winnemucca District boundary encompasses 8.2 million acres located in Humboldt, Pershing, Washoe, Lyon and Churchill counties in the Northwest corner of Nevada. Included are 11 Wilderness Study Areas, 10 Wilderness Areas, and the Black Rock Desert-High Rock Canyon Emigrant Trails National Conservation Area (NCA). The 314,829 acre Black Rock Desert Wilderness Area is the largest wilderness unit administered by the BLM.

Winnemucca is a highly complex fire management Field Office. The fire season runs from approximately April through October. The Fire Management Division hosts the Central Nevada Interagency Dispatch Center (CNIDC), three fire stations, ten Engines, one Water Tender and one dozer. Our aviation resources can include a Helicopter Modules, a BLM smokejumper secondary spike base, Single Engine Air Tankers (SEAT) with numerous remote bases, and an Air Tactical aircraft. CNIDC supports not only ours and the Battle Mountain Field Office, but also the Santa Rosa, Austin and the Tonopah Ranger Districts—nearly 23 million acres! We have a Zone Aviation Manager that supports both our complex aviation program and our neighboring Battle Mountain Field Office’s heavy air tanker base. In addition, our Fuels Management Program has an aggressive goal of science based treats of approximately 5,000 acres per year. Treatments include prescribed fire, mechanical, biological and chemical treatments. Our focus is on integrating fuels management and resource management objectives within the Great Basin Restoration Initiative. It would be hard to reference only the Winnemucca BLM Fire Management Division, because a lot of what we do is interagency. Working with the Humboldt-Toiyabe National Forest, the Battle Mountain Field Office, the Sheldon National Wildlife Refuge, the McDermitt BIA, the Nevada Division of Forestry, local fire departments and bordering states is part of any day’s routine.

Due to these achievements the Winnemucca Fire Management Division received the prestigious national interagency Paul Gleason “Lead by Example” award for Motivation and Vision in 2006.



Physical features of the Winnemucca Field Office



The physical features of the Winnemucca Field Office are typical of those associated with the Great Basin and Range Physiographic Province. The land form consists of north-south trending mountain ranges, typically 5-15 miles wide, separated by valleys 10-20 miles wide and commonly closed. Climatic features are consistently hot and dry over the Field Office, which in turn influences the physical environment

to a great extent making it fairly uniform throughout. The main supply of water in the Field Office is runoff in the form of snowmelt and rainfall from lands over 5,000 feet in elevation. Annual precipitation in the area varies from 4 inches at lower elevations up to 22 inches in the highest mountains bordering Oregon. The Humboldt River, the longest river in the U.S that is located entirely within one state, flows through the Field Office generally from northeast to southwest for a distance of approximately 150 miles ending in Humboldt Sink. Within the Field Office there also are approximately 1,282 miles of perennial streams of which 40 percent are on public lands, two small lakes, over 10,000 springs, and 225 reservoirs.

Lands within the jurisdiction of the Winnemucca Filed Office have a long history of minerals development dating back to the 1860's. Some of these minerals include: gold, silver, mercury, tungsten, manganese, molybdenum, copper, barite, sulfur, gypsum, limestone, iron, diatomite, clay, as well as precious and semi-precious gemstones.

The Field Office recreation staff oversees a wide variety of outdoor recreation activities occurring on BLM administered lands, besides being a popular location for group activities, the Black Rock Desert Playa, in particular, has also been the location of commercial activities including photography, filming and special events, including the world land speed record trials and historic wagon train re-enactments on historic trails. This should be considered the eighth wonder of the world where it is so flat you can see the curvature of the earth. The Black Rock Desert is the largest flat area in the contiguous United States. Approximately 300,000 recreation user-days occur in the Winnemucca District annually. The Winnemucca Field Office administers approximately 30 Special Recreation Permits per year including the largest administered by



BLM, Burning Man Festival in late August-early September, which drew over 48,000 participants in 2007. The recently designated Black Rock Desert High Rock Canyon Emigrant Trails National Conservation Area (NCA) was protected in 2003 to preserve the historic trails, virtually untouched wilderness landscape, and broad representation of Great Basin wildlife species found in the area. The landscape of the NCA consists of the largest playa (dry lake bed) in North America and surrounding sand dunes, alluvial slopes, lakeshore terraces, foothills and rugged mountain ranges. These elements, and the occurrence of hot springs and the Applegate-Lassen Emigrant National Historic Trail (California Trail), form a significant, nearly pristine setting in northwest Nevada. The NCA contains about 815,000 acres. Ten new wilderness areas surrounding the north end of the playa total about 752,000 acres. The area is a popular recreation spot. Outdoor activities available include; backpacking, hiking, hunting, vehicle touring, historic trial tours and photography. The world land speed record was



set here by a British jet-engine car in 1997 at 763 mph (Mach 1.02).



Art work at Burning Man 2004

Nevada is truly one of America's least discovered treasures. It is also the most mountainous state in the lower 48. Combine that fact with the setting sun and you get some of the best sunsets anywhere in the United States. Living anywhere in Nevada the first thing you're most likely to see when looking out the door is SAGEBRUSH and plenty of it.



Move up in elevation though, and you'll find plenty of aspen, mountain mahogany, pinyon pine, limber pine, bristlecone pine and many deciduous shrubs.



The Winnemucca Community



The City of Winnemucca was named after the famous Paiute Indian Chief, Old Winnemucca. Legend has it that when several white prospectors came into the area of the Humboldt Sink they first saw Winnemucca wearing one moccasin and his other foot bare. In the Paiute dialect, “mucha” means moccasin and the white men referred to him as “wan-na-muccha”, or “one moccasin”.

Winnemucca is located in North Central Nevada at an elevation of 4,299 and is effectively cut off from the

Pacific moisture by the Sierra Nevada Mountain Range, resulting in a climate of dry, warm days, cool nights, and light precipitation. Nevada is third only to California and Idaho for its modern-day Basque populations. Because of the many children and grandchildren of Basque shepherders who live in places like Humboldt County, Basque customs and language are not only practiced daily but celebrated annually. Winnemucca has more Basque restaurants per capita than any other place in the world. Winnemucca also has hosted an annual Basque festival for 20 years. While the event provides a rich helping of Basque traditions, it also includes a liberal mix of the traditional American good times that characterize this second home.

Thirteen miles north of Winnemucca sits Winnemucca Farms, one of the country’s largest potato fields. Winnemucca Farms processing operation is one of the largest dehydration facilities in the world. It produces potato flakes, Creamy Mash and potato flour. Winnemucca Processing is also the biggest dehydrated potato roll supplier to Procter & Gamble, the company that makes Pringles potato chips.

Winnemucca offers very many amenities for a small city of approximately 12,000 people. The Winnemucca Branch Campus of Great Basin College (GBC) is located in Winnemucca and is a regional, comprehensive university that offers Associate, four-year and graduate degrees. Next, the Humboldt County School District hosts six public schools all rated excellent in academic, athletics and other extra-curricular activities. These schools consist of one high school, one Junior High School, one Middle School and three Elementary Schools. Schools for K-12 are located in Winnemucca and McDermitt, and Denio, Orovada, Kings River and Paradise Valley hosting grades 1-8. Due to the strong tax base these strong schools have modern facilities with a great teacher to student ratio. Winnemucca has a convention center, indoor events center, three city parks, two swimming pools (one covered pool), two lighted tennis courts, a sports complex with four base/softball fields, a County Library, an excellent 9-hole golf course, a bowling alley, a two screen movie theater, many mountain bike trails and an art gallery that features local artists’ work. There are all the shopping amenities that one needs in Winnemucca, and yes, even a Super WalMart! Hunting, fishing, rock hounding, photography, horseback riding, and boating are popular activities in the county as well. In the health care arena, Winnemucca has the Humboldt General Hospital, which is a state of the art 50-bed hospital. Winnemucca has eight doctors, four dentists, three optometrists, in addition to several public health services. When it comes to transportation in and out of the Winnemucca area, travelers have a multitude of choices. In addition to the I-80 transportation corridor that connects to the Reno/Tahoe International Airport in nearly 2-hour, Amtrak’s California Zephyr also serves Winnemucca with its local depot that offers daily trips with stops between San

Francisco and Chicago. Greyhound rounds out the interstate transportation mediums from its depot located downtown. Lastly, Winnemucca is supported by a municipal airport with daily charter flights available. Humboldt County has eight major mines that produce gold, silver, limestone, and opals. Each year, Nevada's mines produce about 9 million troy ounces of gold worth over \$3 billion, making Nevada the third largest gold producer in the world, behind South Africa and Australia. Silver production usually exceeds 20 million troy ounces, giving Nevada undisputed claim as the silver state.



Newmont Gold Mine

Click on the links below:

For more information contact:

[Jeff Fedrizzi](#), Fire Management Officer

Office: 775-623-1726

or

[Paul Petersen](#), Assistant Fire

Management Officer

Office: 775-623-1526

Fax: 775-623-1503

Bureau of Land Management

Winnemucca Field Office

5100 East Winnemucca Blvd.

Winnemucca, NV 89445

[Winnemucca BLM Field Office](#)
[City of Winnemucca](#)
[Central Nevada Interagency Dispatch Center](#)
[Western Great Basin Coordination Center](#)
[Humboldt County](#)
[Humboldt County School District](#)
[Humboldt Development Authority](#)
[Great Basin College](#)
[Newmont Mining Company](#)
[Nevada Mining Association](#)
[Winnemucca Convention Center](#)
[Black Rock Desert & Playa](#)
[Humboldt-Toiyabe National Forest](#)
[Vision West Realty](#)
[Century 21 Winnemucca Office](#)

Vision Statement: *A creative and efficient leadership team dedicated to excellence in safety and service to the public through professionalism and accountability. Pursuing excellence through respect and pride in workmanship continually striving to improve by embracing challenges and accepting change.*

Mission Statement: *Protect public and natural resources utilizing professional and effective fire management through the application of science, technology and innovation.*

We as Fire Managers and individuals are committed to recruit, support, advance and retain individual personnel for the benefit of our team and program.

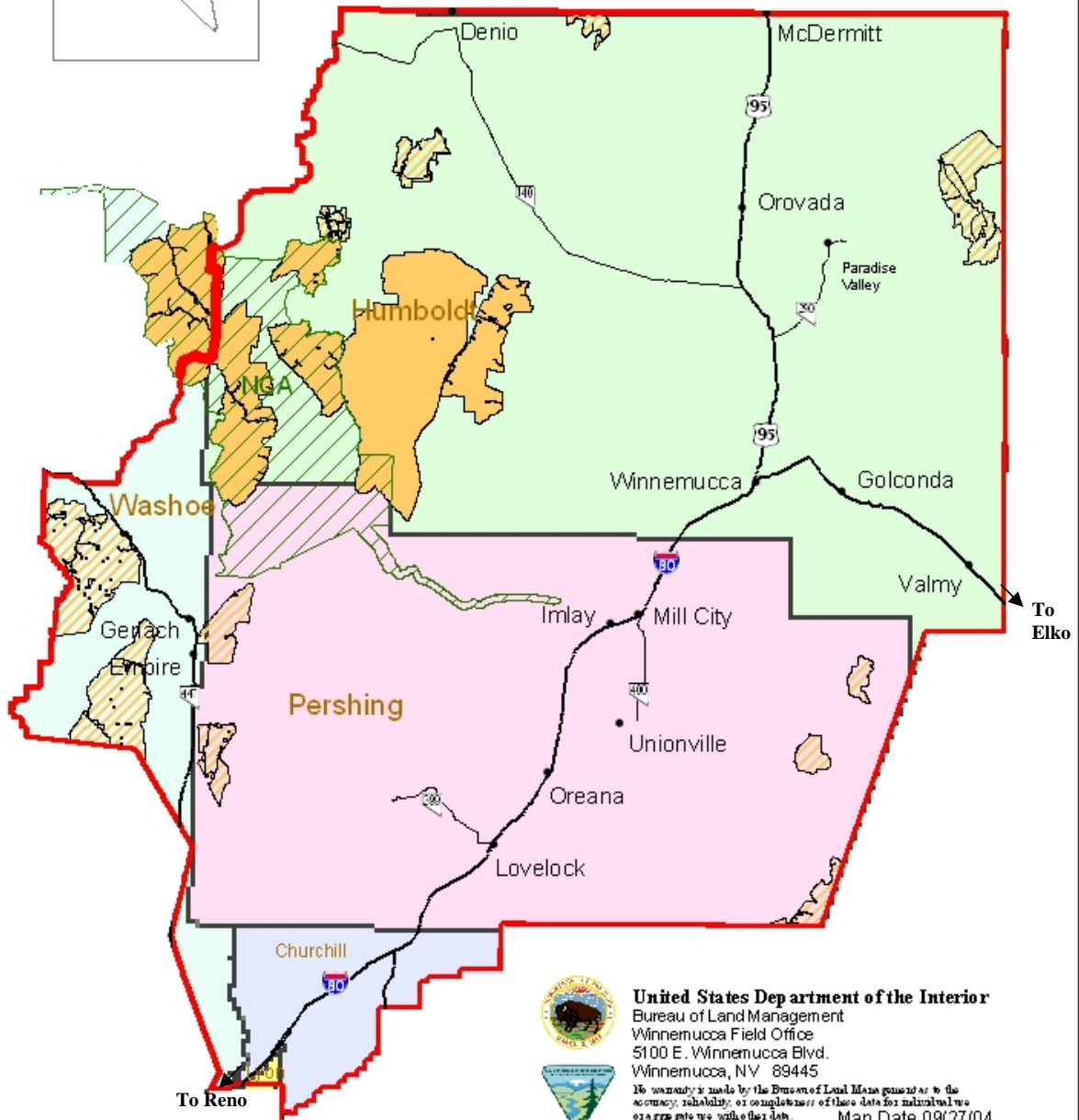
Winnemucca Field Office

Legend

- National Conservation Area
- Wilderness Area
- Wilderness Study Area
- County
- Winnemucca District



Oregon 0 12.5 25 50 Miles



United States Department of the Interior
Bureau of Land Management
Winnemucca Field Office
5100 E. Winnemucca Blvd.
Winnemucca, NV 89445

No warranty is made by the Bureau of Land Management as to the accuracy, reliability, or completeness of these data for individual use or aggregate use with other data. Map Date 09/27/04