

Figures

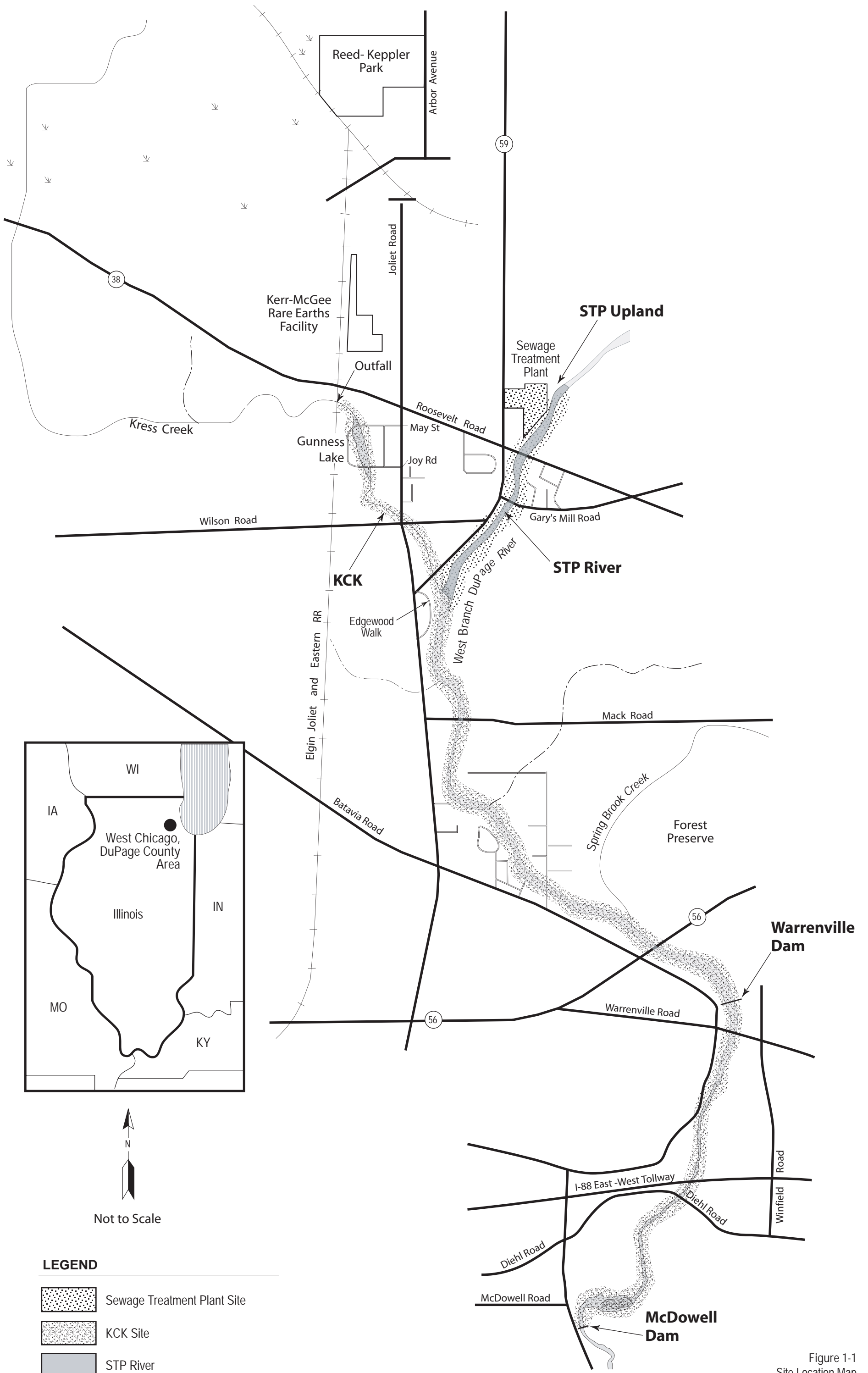


Figure 1-1
 Site Location Map
 Kress Creek/West Branch DuPage River Site
 Sewage Treatment Plant Site

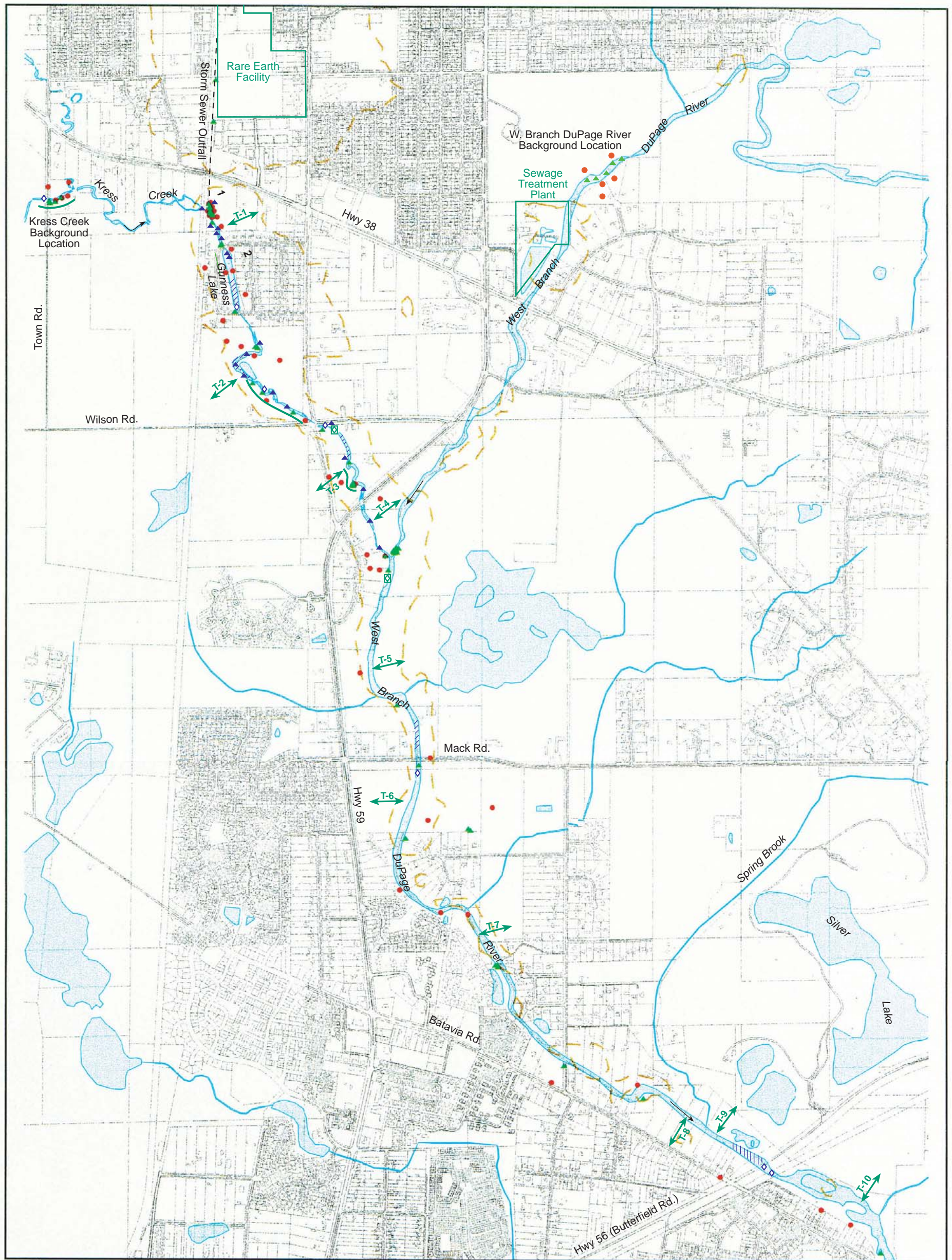





Figure 3-1
Wildlife Survey Sampling Locations
 Kress Creek/West Branch DuPage River to Warrenville Dam

Kress Creek - West Branch Dupage River Watershed Overview

Kress Creek RI
 West Chicago, Illinois

-  Aquatic Invertebrate Survey Area
-  Terrestrial Survey Area
-  Fish Survey Area

-  Water
-  EG&G 1989 flyover boundary

Scale 1:18000
 1 in = 1500 feet



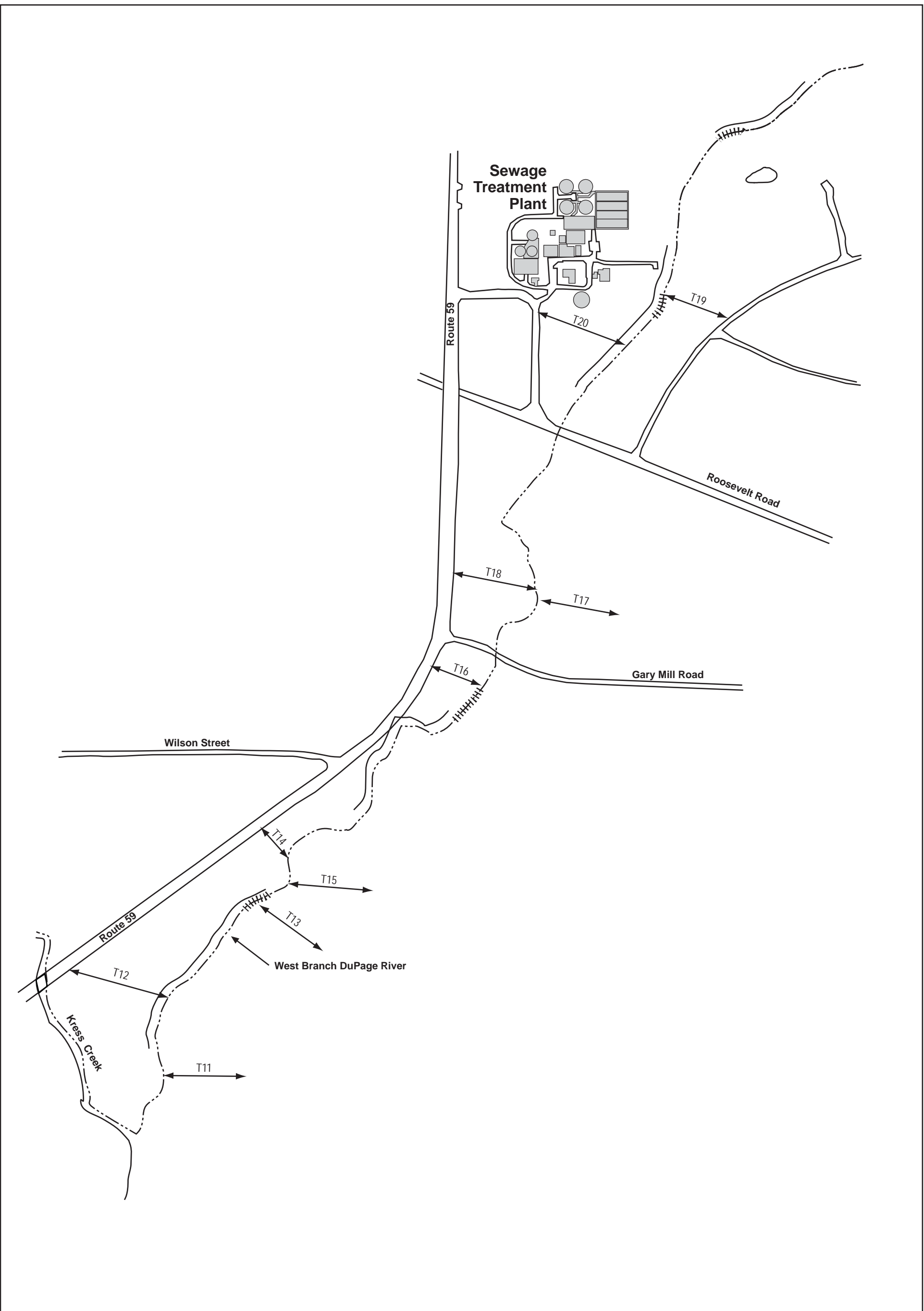

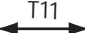

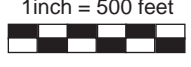


FIGURE 3-2
Wildlife Survey Sampling Locations
West Branch DuPage River from STP to Confluence
 Sewage Treatment Plant
 West Chicago, Illinois

-  Aquatic Invertebrate Survey Area
-  T11 Terrestrial Survey Area
-  Fish Survey Area

N

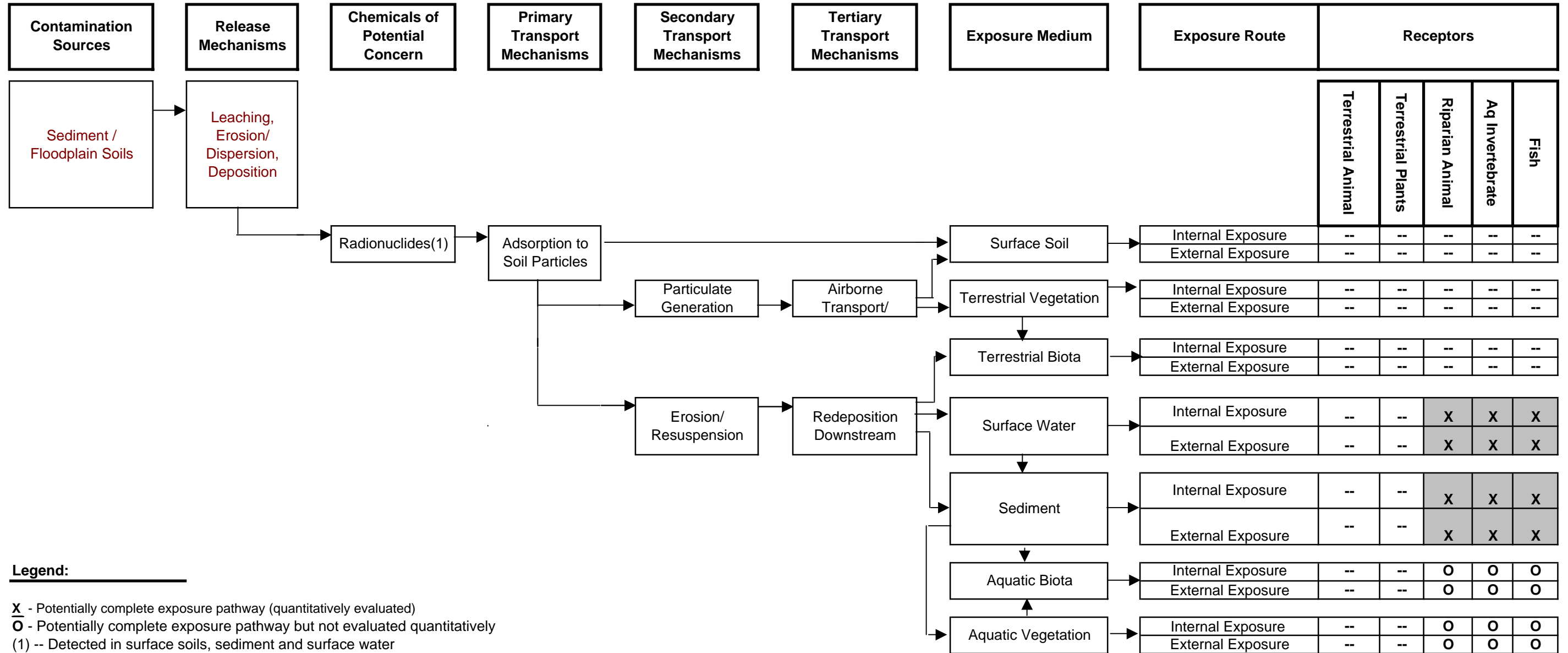
1 inch = 500 feet



CH2MHILL

Figure 3-3. Conceptual Site Model for Radionuclides

Kress Creek -- West Chicago, IL

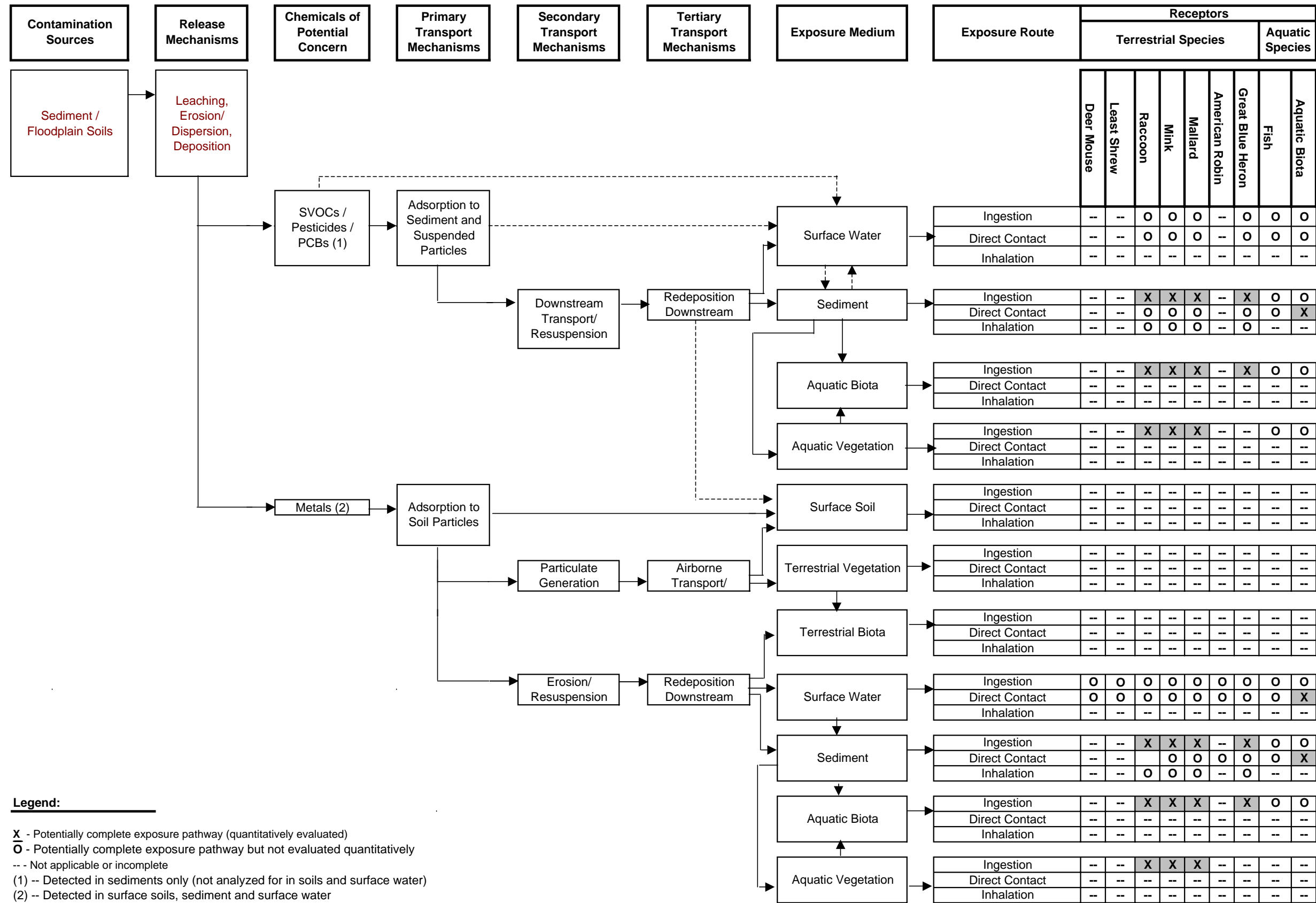


Legend:

- X** - Potentially complete exposure pathway (quantitatively evaluated)
- O** - Potentially complete exposure pathway but not evaluated quantitatively
- (1) -- Detected in surface soils, sediment and surface water
- - Not applicable or incomplete

Figure 3-4. Conceptual Site Model for Chemical Contaminants

Kress Creek - West Chicago, IL



Legend:

- X - Potentially complete exposure pathway (quantitatively evaluated)
- O - Potentially complete exposure pathway but not evaluated quantitatively
- Not applicable or incomplete
- (1) -- Detected in sediments only (not analyzed for in soils and surface water)
- (2) -- Detected in surface soils, sediment and surface water
- Dashed lines indicate theoretically complete pathways but unanalyzed media

Figure 3-5. Conceptual Site Model for Radionuclides

STP River -- West Chicago, IL

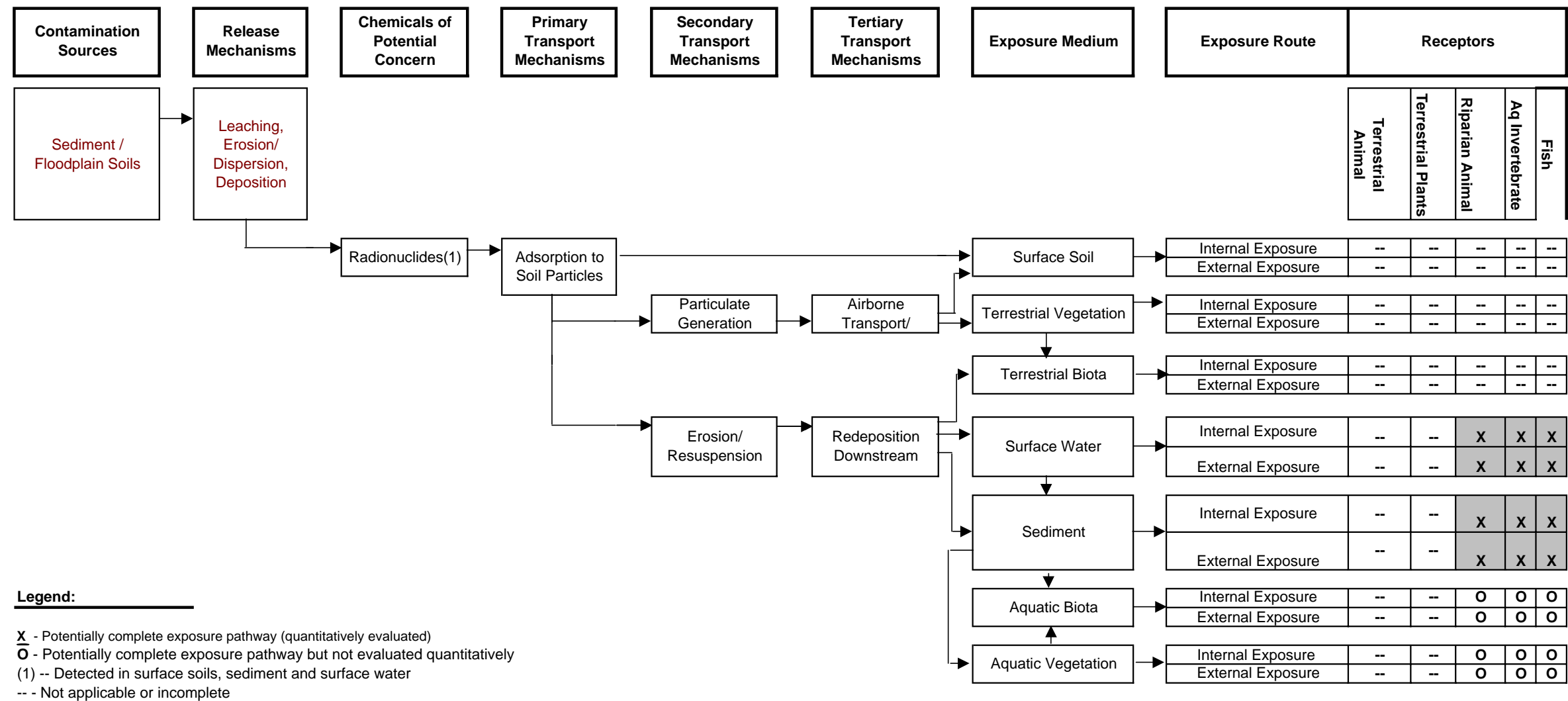
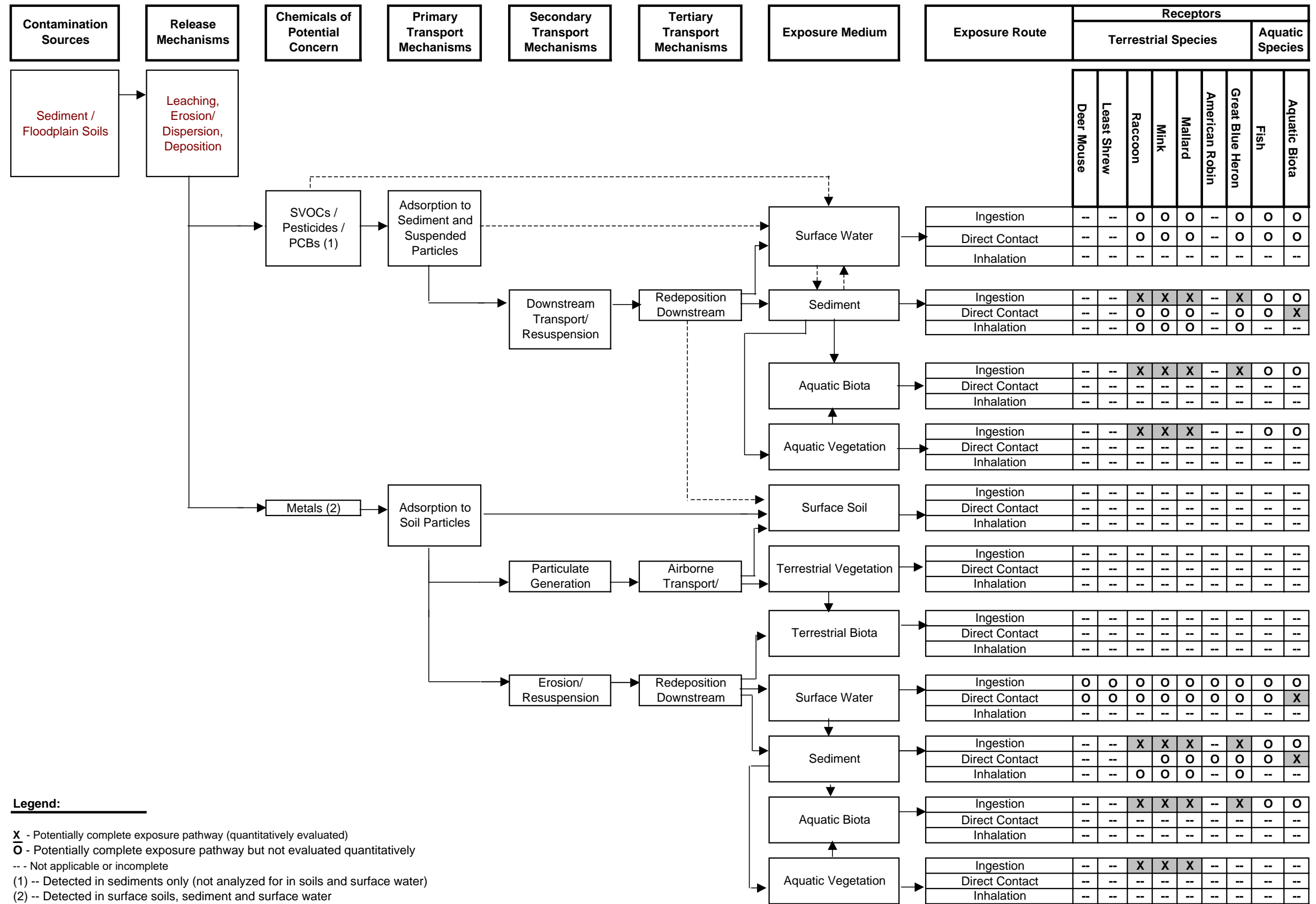


Figure 3-6. Conceptual Site Model for Chemical Contaminants

STP River -- West Chicago, IL

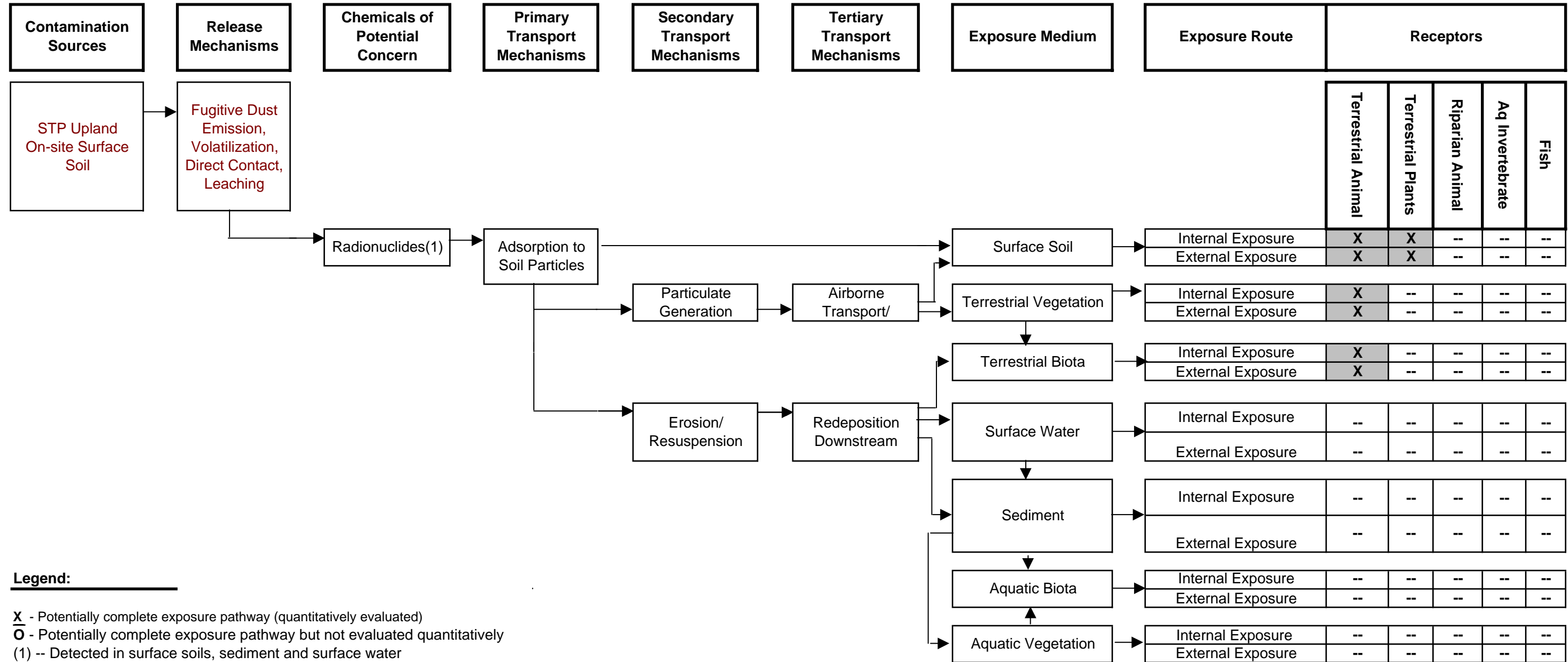


Legend:

- X - Potentially complete exposure pathway (quantitatively evaluated)
- O - Potentially complete exposure pathway but not evaluated quantitatively
- - Not applicable or incomplete
- (1) -- Detected in sediments only (not analyzed for in soils and surface water)
- (2) -- Detected in surface soils, sediment and surface water
- Dashed lines indicate theoretically complete pathways but unanalyzed media

Figure 3-7. Conceptual Site Model for Radionuclides

STP Upland -- West Chicago, IL

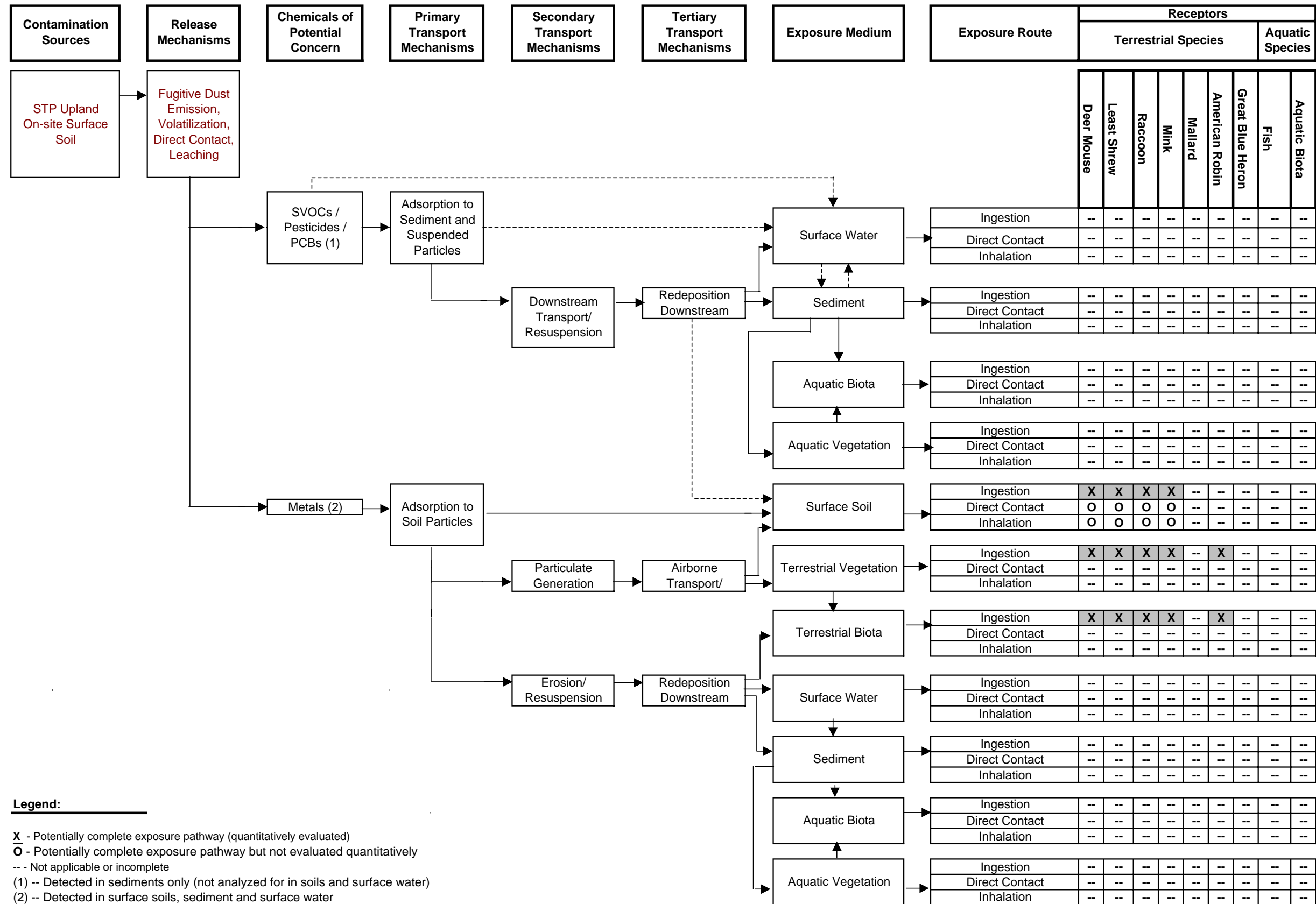


Legend:

- X - Potentially complete exposure pathway (quantitatively evaluated)
- O - Potentially complete exposure pathway but not evaluated quantitatively
- (1) -- Detected in surface soils, sediment and surface water
- - Not applicable or incomplete

Figure 3-8. Conceptual Site Model for Chemical Contaminants

STP Upland - West Chicago, IL



Legend:

- X - Potentially complete exposure pathway (quantitatively evaluated)
- O - Potentially complete exposure pathway but not evaluated quantitatively
- - Not applicable or incomplete
- (1) -- Detected in sediments only (not analyzed for in soils and surface water)
- (2) -- Detected in surface soils, sediment and surface water
- Dashed lines indicate theoretically complete pathways but unanalyzed media