

**DAILY DIRECT HOGS PLANT DELIVERED as of 1:30 PM**

NATIONAL - LM HG203:

Carcass Basis Negotiated Barrows & Gilts: **26,895**  
 Compared to prior day's close, **1.44 higher**  
 Base Price Range: **\$44.00 - \$58.78** Wtd Avg: **\$55.22**

IOWA/MINNESOTA - LM HG206:

Carcass Basis Negotiated Barrows & Gilts: **13,993**  
 Compared to prior day's close, **2.05 higher**  
 Base Price Range: **\$45.00 - \$58.78** Wtd Avg: **\$57.15**

WESTERN CORNBELT - LM HG212:

Carcass Basis Negotiated Barrows & Gilts: **18,794**  
 Compared to prior day's close, **2.01 higher**  
 Base Price Range: **\$45.00 - \$58.78** Wtd Avg: **\$57.08**

EASTERN CORNBELT - LM HG210:

Carcass Basis Negotiated Barrows & Gilts: **8,101**  
 Compared to prior day's close, **0.97 lower**  
 Base Price Range: **\$44.00 - \$55.55** Wtd Avg: **\$50.92**

NATIONAL DAILY LEAN HOG SLTR COST - LM HG213

Monday	Head Count	Avg Carcass Wt	49-50%	51-52%	53-54%
9-Feb-09	<b>181,520</b>	<b>204.79</b>	<b>\$53.77</b>	<b>\$55.57</b>	<b>\$57.50</b>

USDA NATIONAL CARLOT PORK REPORT - NW LS500

Carcass Cutout Values	57.81	Change:	0.06
Primal Loin	76.41		0.06
Primal Butt	62.60		2.82
Primal Picnic	37.71		<b>(-0.41)</b>
Primal Rib	101.21		<b>(-0.16)</b>
Primal Ham	39.45		<b>(-0.91)</b>
Primal Belly	72.36		<b>(-0.02)</b>
<b>Total Loads</b>	<b>154.8</b>		
Pork Cuts	131.8	Lds	
Trim/Process Pork	23.0	Lds	

DAILY EST. HOG SLAUGHTER UNDER FIS - SJ LS710

Today (est)	<b>428,000</b>
Week Ago (est)	<b>429,000</b>
Year Ago (act)	<b>428,000</b>
Week to Date (est)	<b>857,000</b>
Same Period Last Week (est)	<b>853,000</b>
Same Period Last Year (act)	<b>857,000</b>

**CME LEAN HOG CLOSE**

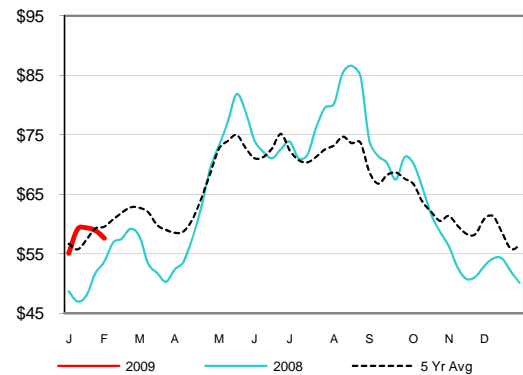
	High	Low	Settle	Change
Feb	<b>57.15</b>	<b>56.45</b>	<b>56.75</b>	<b>0.70</b>
Apr	<b>62.75</b>	<b>61.70</b>	<b>62.30</b>	<b>2.22</b>
May	<b>74.45</b>	<b>73.45</b>	<b>74.40</b>	<b>1.85</b>
June	<b>75.40</b>	<b>74.45</b>	<b>75.05</b>	<b>2.00</b>

CME Lean Hog Delayed Futures - Pit-Traded

NATIONAL WEEKLY DIRECT HOGS NON-CARCASS MERIT PREMIUM

For Week ending	Feb 07, 2009	Average
Volume	<b>0.00 - 0.00</b>	<b>0.00</b>
Transportation	<b>0.50 - 2.50</b>	<b>1.47</b>
Delivery Time	<b>0.34 - 3.00</b>	<b>0.83</b>
Breed	<b>6.50 - 19.57</b>	<b>13.36</b>
Pork Quality Assurance	<b>0.00 - 0.00</b>	<b>0.00</b>

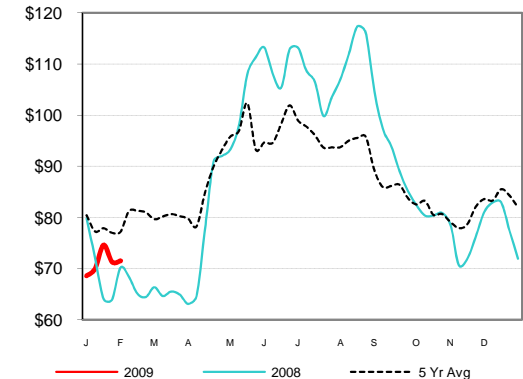
**Weekly Western Cornbelt P.M. Wtd. Avg**



**Weekly Butt Primal Value**



**1/4" Trim Butt Weekly Wtd Avg**



**Actual Sow Slaughter**

