

[LM\\_XB403](#)

**DAILY ESTIMATED CUTOOUT VALUES**

	Choice 600-900#	Select 600-900#	Choice/Select Spread
Cutout Values	137.15	134.83	2.32
Change from Prior Day	0.39	0.54	
Primal Rib	187.93	181.60	
Primal Chuck	114.96	115.78	
Primal Round	133.50	130.41	
Primal Loin	178.41	172.96	
Primal Brisket	98.54	97.78	
Primal Short Plate	91.03	92.11	
Primal Flank	81.35	80.42	
			<b>Load Count:</b>
			Total 236
			Choice 108
			Select 71
			Trimmings 24
			Grinds 34

Fresh 50% Trimmings: 23 Loads @ 70.28

[NW\\_LS441](#)

**USDA BY-PRODUCT DROP VALUE (STEER)**

Value: 6.95 Change: unch

[LM\\_CT100](#)

**5 AREA WEEKLY ACCUMULATED WEIGHTED AVG CATTLE PRICE**

	Head Count	Avg Weight	Avg Price
Live Steer	0		
Live Heifer	0		
Dressed Steer	0		
Dressed Heifer	0		

[SJ\\_LS710](#)

**ESTIMATED DAILY CATTLE SLAUGHTER**

Today (est)	127,000
Week Ago (est)	124,000
Year Ago (act)	123,000
Week to Date (est)	252,000
Same Period Last Week (est)	249,000
Same Period Last Year (act)	242,000
Previous Day Estimated	Steer and Heifer 98,000 Cow and Bull 27,000

[SJ\\_LS712](#)

	W/E 02/07/2009 (Estimate)	Previous week (Estimate)	Last Year (Actual)
<b>BEEF PRODUCTION</b>			
Slaughter	622,000	631,000	616,000
Live Weights	1308	1307	1288
Dressed Weights	782	783	777
Beef Production (millions of pounds)	484.9	492.2	477.0

**USDA BEEF CARCASS PRICE EQUIVALENT INDEX VALUE**

	Choice 600-900#	Select 600-900#	Dressing percent:	
			Steer	Heifer
Values	127.82	124.20	63.72	63.72
Change	0.20	0.28		

[LM\\_XB405](#)

**USDA NATIONAL CUTTER COW CARCASS CUTOOUT**

110.57 Change (1.15) 90% lean: 142.62

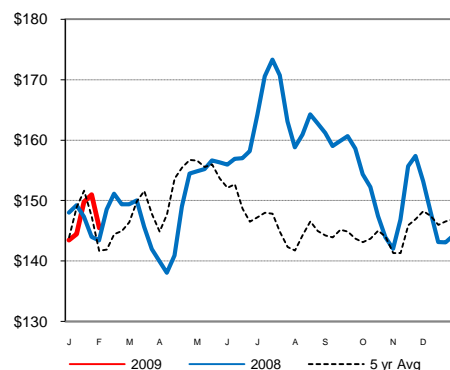
**CME LIVE CATTLE**

CME LIVE CATTLE	High	Low	Close	Change
February	85.45	84.50	84.78	0.08
April	88.90	87.80	88.05	0.30
June	86.00	85.15	85.40	0.48

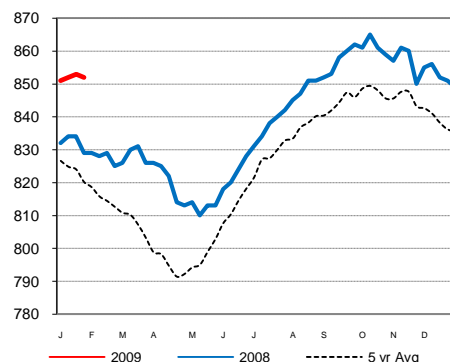
**CME FEEDER CATTLE**

CME FEEDER CATTLE	High	Low	Close	Change
March	96.90	95.60	95.70	0.15
April	98.20	96.95	97.10	(0.25)
May	99.30	98.33	98.48	(0.05)

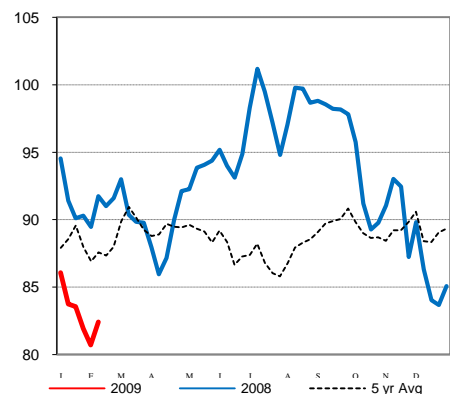
**Weekly Choice Cutout**



**Weekly Steer Dressed Weights**



**5 Area Weekly Wtd Avg Steer Price**



**Weekly Ch/Se Spread**

