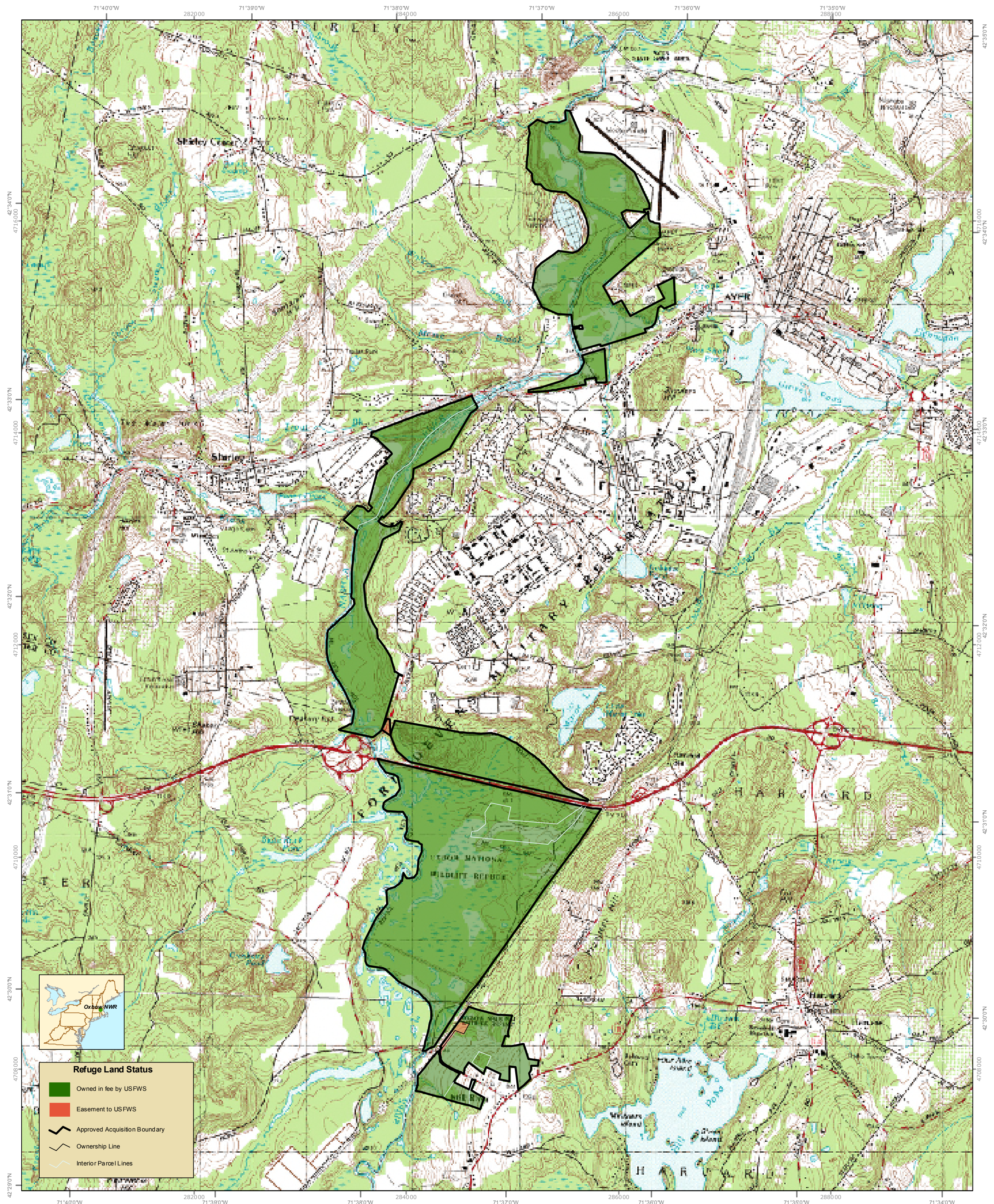


U.S. Fish & Wildlife Service

Land Status

# Oxbow National Wildlife Refuge

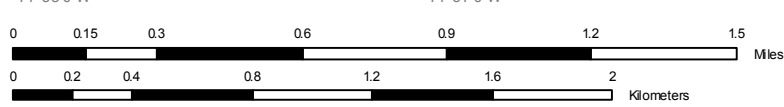
Middlesex and Worcester Counties, Massachusetts



**Refuge Land Status**

- Owned in fee by USFWS
- Easement to USFWS
- Approved Acquisition Boundary
- Ownership Line
- Interior Parcel Lines

Produced in the Division of Realty, Hadley, Massachusetts  
Land Status Current to: 02/12/2004  
Basemap: USGS 1:24,000 topographic map  
Refuge boundaries: compiled from USFWS sources  
Datum & Projection: NAD\_1983\_UTM\_Zone\_19N  
Map Print Date: 7/14/2006



This map is designed for refuge management.  
It is not intended for use as a land survey or  
as a representation of land for conveyance or tax purposes.  
For more information visit the USFWS Northeast Region GIS  
website at <http://northeast.fws.gov/gis/>

