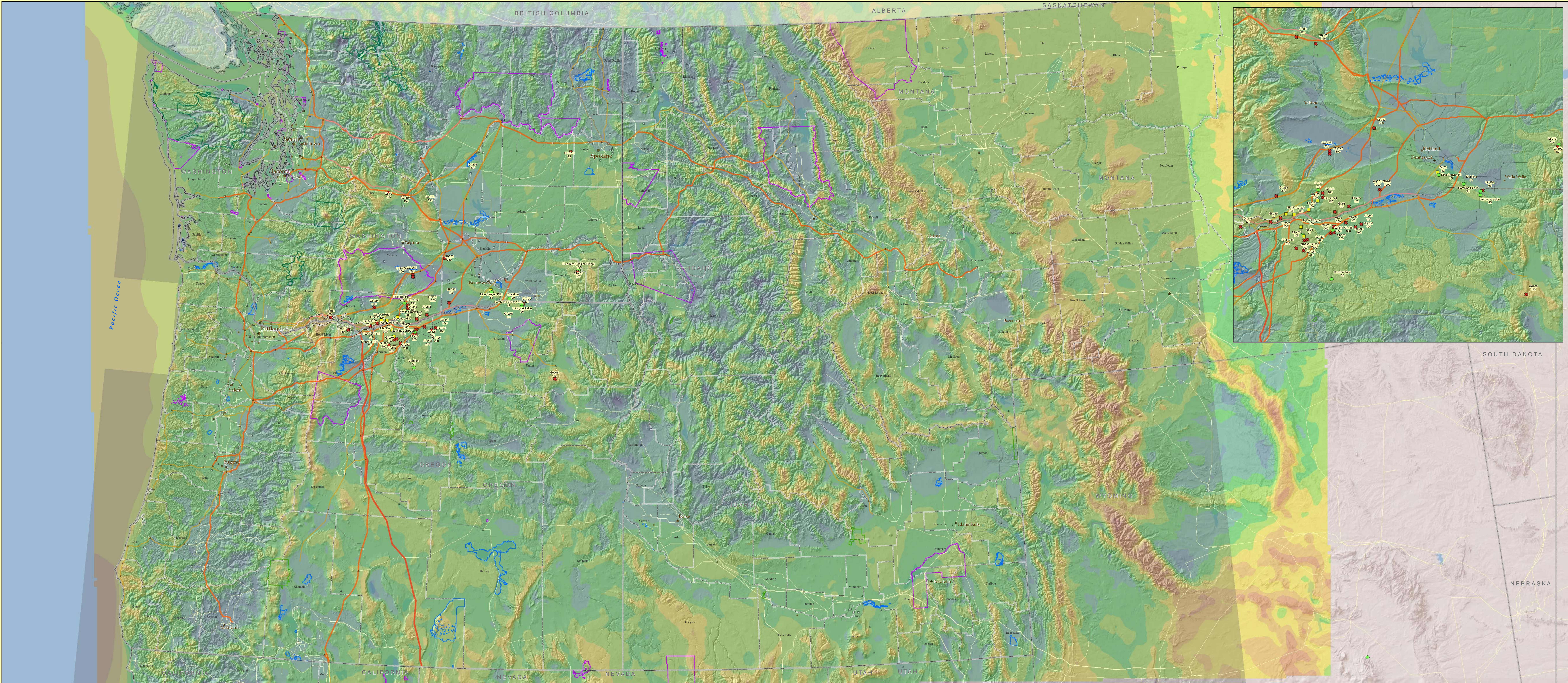


NW Wind Integration Action Plan



Legend

▲ BPA	● Existing Wind Project
○ Foreign Owned	■ Proposed Wind Project
BPA T-Lines by kV	■ Wind Project Under Construction
~ Under 230 kV	■ Pacific NW Mean Wind Speed * (Three-Year Average: 2004-2006)
~ 230 to less than 345 kV	■ 0-3
~ 345 to less than 500 kV	■ 3-4
~ 500 kV	■ 4-5
~ Greater than 500 kV	■ 5-6
Foreign Owned T-Lines	■ 6-7 * Wind speed data shown in meters/second
~ Less than 230 kV	■ 7-8
~ 230 to less than 345 kV	■ 8-9
~ 345 to less than 500 kV	■ 9-11
~ 500 kV and above	■ 11-12
■ Counties	■ Major Land Ownership
■ States	■ U.S. Fish & Wildlife Service
● Major Cities	■ National Park Service
● 25000 - 40000	■ Indian Reservations
● 40001 - 75000	■ Columbia River Gorge
● 75001 - 125000	■ National Scenic Area
● 125001 - 200000	
● 200001 - 521000	

Source: BPA Technology Innovation (TCI) funded 2007 Regional Wind Resource assessment modeling project data. BPA GIS, ESRI, LINGO, ITan, Inc.

1 inch equals 22 miles

BONNEVILLE
GEOSPATIAL SERVICES

BPA Regional Wind Dataset of estimated annual average wind, 2004 to 2006, produced by Technology Innovation, Bonneville Power Administration, ITan Environmental Forecasting Group, study number: John Power project manager, BPA

February 14, 2008