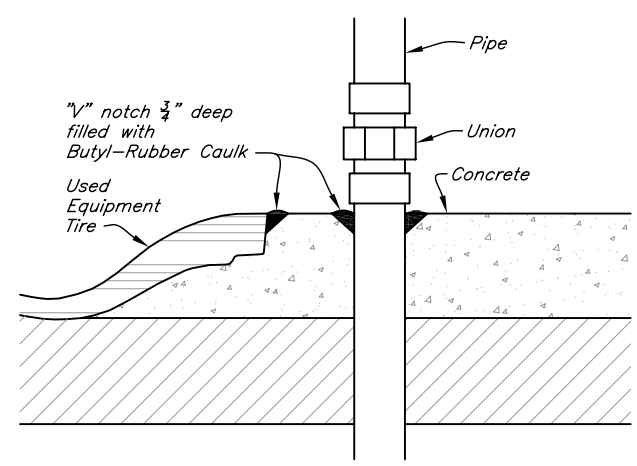
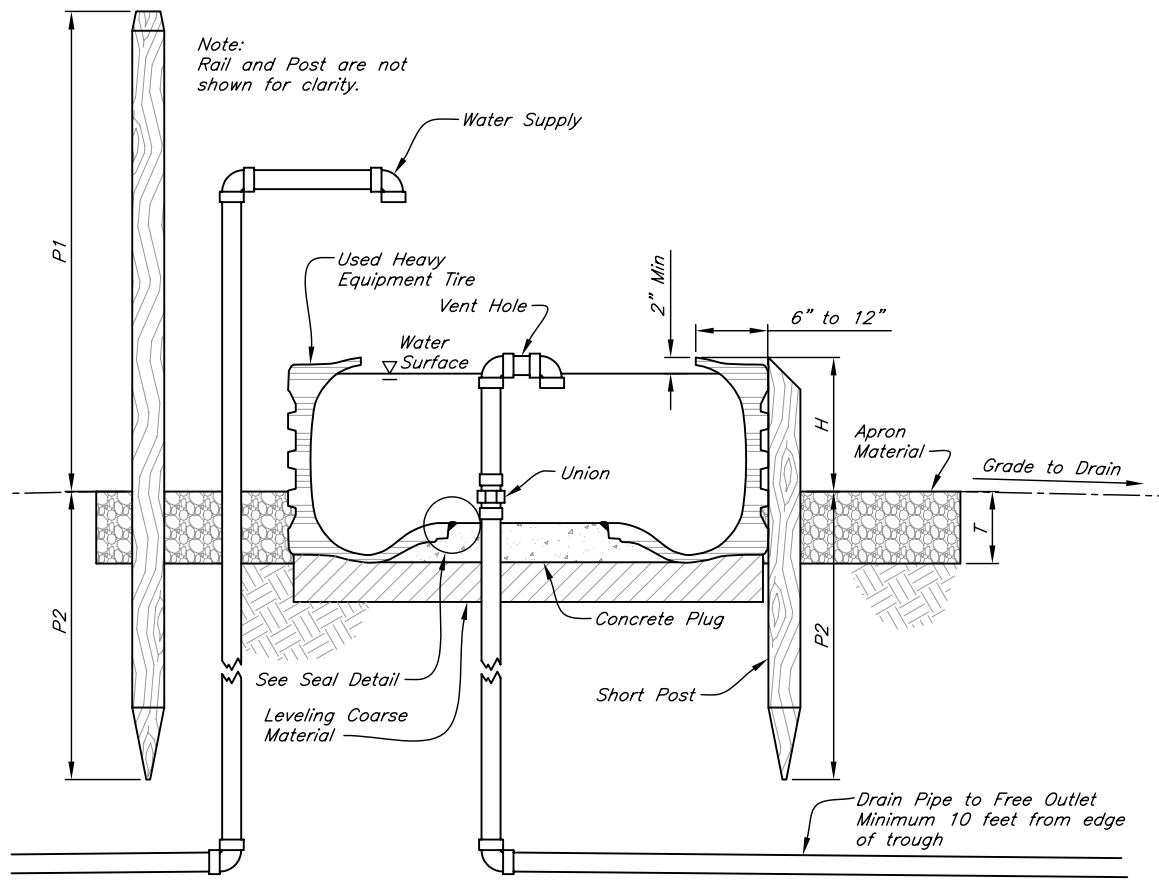


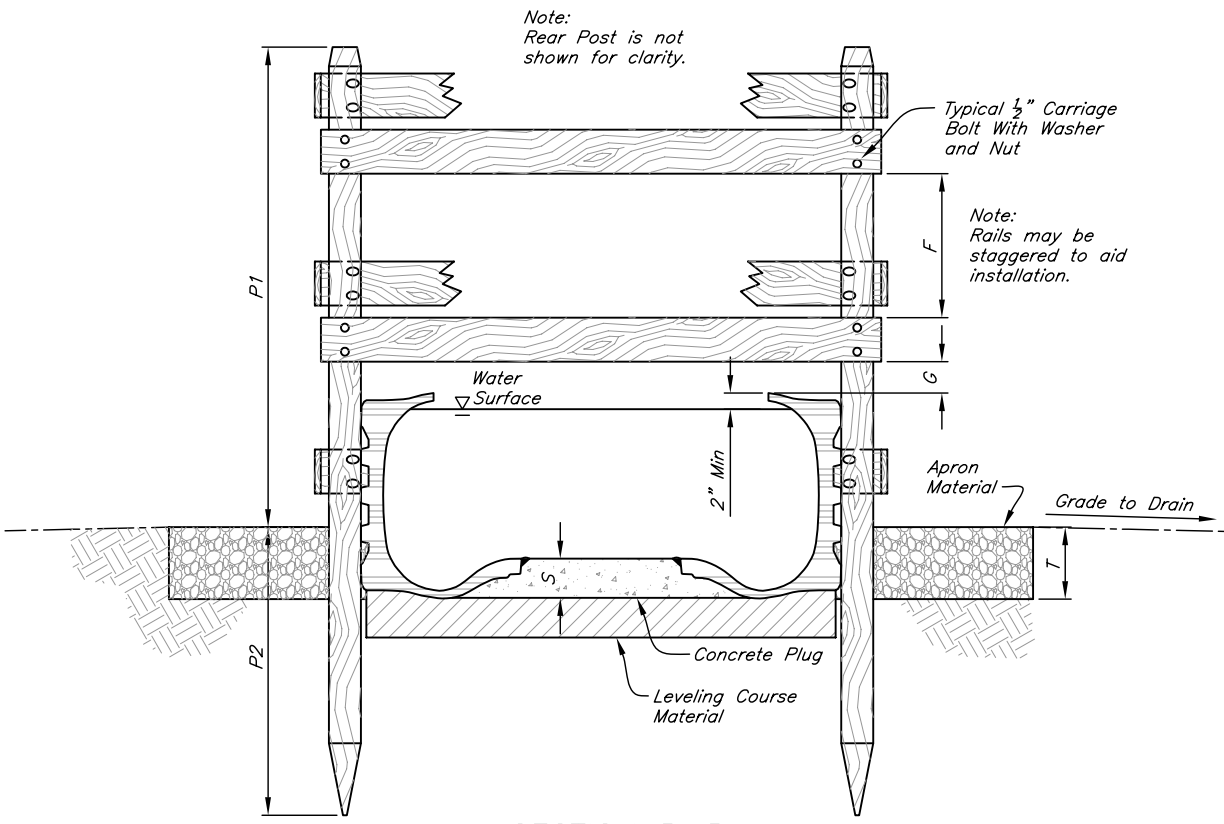
SECTION A-A  
NOT TO SCALE



Seal Detail  
NOT TO SCALE



SECTION A-A  
NOT TO SCALE



SECTION B-B  
NOT TO SCALE

**NOTES**

- 1) Used heavy equipment tire shall be used.
- 2) It is the responsibility of the landowner/operator to determine that the tire is free of chemicals injurious to livestock. The landowner/operator is hereby cautioned that injection of rubber by horses and goats could jeopardize the health of the animal.
- 3) Cut away part of the tire sidewall. This will be the top of the trough.
- 4) See construction specifications for Apron, Leveling Course, and Post and Rail material.
- 5) Install Posts and Rails to provide protection for water source and hold trough in place.
- 6) A leveling course shall be used to fill around the outlet pipe and provide a level, firm foundation for the trough.
- 7) Place concrete in the center of the tire and work it under the edge. Form a "V" notch in the concrete (see Seal Detail) and smooth the surface.
- 8) Provide an escape device for small animals and birds that may become entrapped. See Wildlife Escape Drawings for construction details.
- 9) See Pipeline Drawings for water supply and drain pipe detail construction drawings.

**DIMENSIONS**

- A = \_\_\_\_\_ (ft)
- B1 = \_\_\_\_\_ (ft)
- B2 = \_\_\_\_\_ (ft)
- F = \_\_\_\_\_ (ft) maximum
- G = \_\_\_\_\_ (ft)
- H = \_\_\_\_\_ (ft)
- P1 = \_\_\_\_\_ (ft)
- P2 = \_\_\_\_\_ (ft)
- T = \_\_\_\_\_ (ft)
- S = \_\_\_\_\_ (ft) minimum
- Tire = \_\_\_\_\_ " diameter minimum
- \_\_\_\_\_ " wide minimum

ALASKA STANDARD DRAWING  
WATERING FACILITY  
**TIRE WATERING TROUGH**  
STANDARD DWG. NO: AK614-0001  
SIGNED: BAN 04/12/06 SHEET 1 OF 1

Date: 4/2006  
Designed: B Dallas  
Drawn: B Dallas  
Checked: \_\_\_\_\_  
Approved: \_\_\_\_\_

COOPERATOR: \_\_\_\_\_  
LOCATION: \_\_\_\_\_  
JOB: \_\_\_\_\_

**NRCS**  
Natural Resources Conservation Service  
United States Department of Agriculture

File Name: AK614-0001.dwg  
Drawing Name: \_\_\_\_\_  
4/12/2006 1:40PM  
Sheet of \_\_\_\_\_

JOB CLASS: \_\_\_\_\_