

## Lobate Lac Scale, *Paratachardina lobata lobata* (Chamberlin) (Hemiptera: Sternorrhyncha: Coccoidea: Kerriidae)<sup>1</sup>

---

F. W. Howard, Robert Pemberton, Avas Hamon, Greg S. Hodges, Bryan Steinberg, Catharine M. Mannion, David McLean, and Jeanette Wofford<sup>2</sup>

### Introduction

A species of scale insect new to Florida is potentially one of the most devastating pests of trees and shrubs in the state's history. The lobate lac scale, *Paratachardina lobata lobata* (Chamberlin) (Hemiptera: Sternorrhyncha: Coccoidea: Kerriidae), a scale insect native to India and Sri Lanka, was found for the first time in Florida in August 1999 by personnel of the Florida Department of Agriculture and Consumer Services, Division of Plant Industry (DPI) (Hamon 2001). The identification of the species by Avas Hamon of DPI was confirmed by D. R. Miller of the Systematic Entomology Laboratory, U. S. Department of Agriculture, Beltsville, MD. This first record was on a hibiscus (*Hibiscus rosa-sinensis*) in the town of Davie (Broward County). The plant was destroyed by DPI personnel. Plants in the vicinity of this infested hibiscus were inspected without finding *P. lobata lobata*. However,

the species was found again in 2000 on a Benjamin fig (*Ficus benjamina*) in Davie, on cocoplum (*Chrysobalanus icaco*) in Weston (Broward County), and on cocoplum at two sites in Miami (Miami-Dade County). In 2001, the scale insect species was found on 11 sites in Broward County and six sites in Miami-Dade County. In December 2001, DPI inspectors found *P. lobata lobata* in Lake Worth (Palm Beach County). As of October 2002, *P. lobata lobata* has been recorded from sites from Lake Worth on the north to Homestead (Miami-Dade County), a distance of 128 km, and from the coast to 28 km inland. In 1992, specimens of scale insects submitted to DPI from the Bahamas had been identified as *P. lobata lobata*.

### Description and Biology

The mature females of *P. lobata lobata* are about 1.5-2 mm long, and about the same width. The body has two pairs of prominent lobes. To the practiced

---

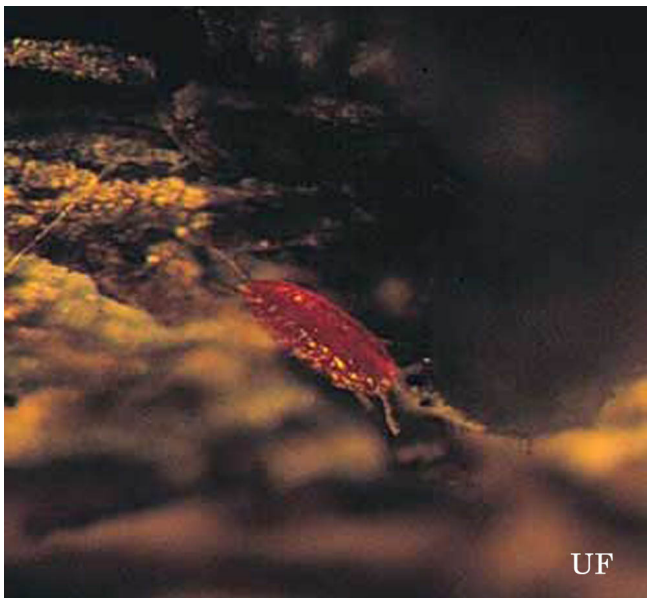
1. This document is EENY-276, one of a series of the Department of Entomology, Florida Cooperative Extension Service, Institute of Food and Agricultural Sciences, University of Florida. Date printed: November 2002. Revised: May 2004. Reviewed: March 2008. This document is also available as a Featured Creature at <http://creatures.ifas.ufl.edu/>. Please visit the EDIS Web site at <http://edis.ifas.ufl.edu>. Please visit the EDIS Website at <http://edis.ifas.ufl.edu>.

2. F. W. Howard, University of Florida; Robert Pemberton, USDA; Avas Hamon, Division of Plant Industry; Greg S. Hodges, Division of Plant Industry; Bryan Steinberg, University of Florida; Catharine M. Mannion, University of Florida; David McLean, Broward Community College and Nova Southeastern University; Jeanette Wofford, Cooper City Arborist.

eye, this scale insect's x-shaped appearance is discernable, even without magnification. The testa is extremely hard and brittle, glossy and of a dark reddish brown color, but often appears dull and black due to a coating of sooty-mold. The first instars (crawlers) are elongate-oval, deep red, and about 0.2 mm long. The characteristic lobate pattern develops in the second instar. The second instar female presumably molts to the adult female as in other scale insects. Males of this species have not been observed in Florida.



**Figure 1.** Mature females of lobate lac scale, *Paratachardina lobata lobata* (Chamberlin). Credits: F. W. Howard, University of Florida



**Figure 2.** First instar (crawler) of lobate lac scale, *Paratachardina lobata lobata* (Chamberlin). Credits: F. W. Howard, University of Florida

Since the mature females of scale insects are wingless, they play no role in dispersal of populations

to occupy new host plants. Scale insects rely mostly on passive dispersal of the crawler stage via air currents. Phoresis (being carried by birds and other animals) may be of some importance in some species. Undoubtedly, movement of infested host plants from one locality to the next is a key factor in spreading scale insect pests in urban areas.

## The Lac Scale Family

The species belongs to the lac scale family, Kerriidae, the best-known species of which is the true lac scale insect, *Kerria lacca lacca* (Kerr). The testa of the true scale insect has been utilized for centuries for making lacquer and similar products. However, most species of the family, including *P. lobata lobata*, do not produce any material of known commercial value. The specific scientific name, *lobata*, refers to the four prominent projections, or lobes, of this scale, and the vernacular name 'lobate lac scale' may be used for this species.

Of the 28 families of Coccoidea recognized by Miller and Ben-Dov (2002), 11 are represented by species native to Florida (Acleridae, Asterolecaniidae, Diaspididae, Cerococcidae, Coccidae, Conchaspidae, Eriococcidae, Kermesidae, Margarodidae, Ortheziidae, and Pseudococcidae). No species of Kerriidae is native to Florida and adjacent land areas. The Kerriidae is confined mostly to the tropics, with a minority of species found in low latitude desert areas. Of the 87 described species, 64 are distributed in the eastern hemisphere. Of the species native to the western hemisphere, 13 are reported from South America, six from Mexico (two of which are also reported in the southwestern U.S.), three reported only in the southwestern U.S., and one from Jamaica (Ben-Dove 2002).

## Effects on Host Plants

*Paratachardina lobata lobata* has been found mostly on woody dicotyledonous plants. It infests the woody portions of twigs and small branches and less frequently main stems of usually < 2 cm in diameter, but usually not branches or main stems of > 2 cm in diameter. It has not been observed on foliage.



**Figure 3.** Wax-myrtle branch infested with lobate lac scale, *Paratachardina lobata lobata* (Chamberlin). Credits: F. W. Howard, University of Florida

On highly susceptible hosts, the scale insects are crowded, forming a contiguous mass that appears as a dark, lumpy crust. On wax-myrtle (*Myrica cerifera*), a highly susceptible host, up to 42 mature females have been counted per 1 cm segment of twig. Sooty mold covers the branches, the insects themselves, and occurs in patches on the foliage. Dense infestations are associated with branch dieback of some plant species, and in severe cases, highly infested shrubs and small trees have died. Wax-myrtle is especially prone to become heavily infested and die from the effects of lobate lac scale. Some plant species appear to tolerate dense infestations, but this may be illusory, as the long-term effects of such infestations are not yet known.



**Figure 4.** Sooty mold on mango leaves, an indirect result of infestation by lobate lac scale, *Paratachardina lobata lobata* (Chamberlin). Credits: F. W. Howard, University of Florida



**Figure 5.** Wax-myrtles in the wild (left) and as a hedge (right) killed by infestations of lobate lac scale, *Paratachardina lobata lobata* (Chamberlin). Credits: F. W. Howard, University of Florida

## Host Range

This scale insect has been found on woody dicotyledonous plants, on one coniferous species, viz., southern red cedar, *Juniperus silicicola*, and on a palm, *Phoenix roebelenii*. As of October 2002, more than 120 species in 44 families of woody plants have been determined to be hosts of *P. lobata lobata* in Florida (Tables 1 & 2). These include 39 plant

species native to Florida. Most of the exotic host plants are grown as ornamental shrubs or trees, or as fruit trees. Some of these are extremely important in the urban landscape as shade trees, specimen trees, or hedges. Some plant families, notably Fabaceae, Myrtaceae, and Moraceae are especially well represented by species that serve as hosts, but this may be related to their abundance in the landscape or other biases. Plants at different sites have been exposed to infestations for different periods and infestation levels are highly variable. Differences in susceptibility have not been determined experimentally. However, certain species appear to be highly susceptible, including certain natives, e.g., wax-myrtle, cocoplum (*Chrysobalanus icaco*), buttonwood (*Conocarpus erectus*), strangler-fig (*Ficus aurea*), myrsine (*Myrsine guianensis*), red bay (*Persea borbonia*), and wild-coffee (*Psychotria nervosa*); popular exotic ornamental plants, e.g., black-olive (*Bucida buceras*), Indian laurel (*Ficus microcarpa*), Benjamin fig (*F. benjamina*); and fruit trees, e.g., lychee (*Litchi chinensis*), mango (*Mangifera indica*), and star-fruit (*Averrhoa carambola*).



**Figure 6.** Twig of mango infested with lobate lac scale, *Paratachardina lobata lobata* (Chamberlin). Credits: F. W. Howard, University of Florida

### Potential Expansion in Distribution

The potential for further spread of this scale insect in the western hemisphere is especially high for warm areas into which there is significant movement of living plants from Florida, e.g., Puerto Rico and other localities of the Caribbean Region, California, and Hawaii.

Invasion of natural areas is of paramount concern. A cursory examination in several tropical

hardwood hammocks in Broward County revealed that there were heavy infestations on diverse species over large areas. The presence of heavy infestations 28 km inland, i.e., virtually at the eastern edge of the Everglades, implies that vegetation in this vast natural area is threatened. Most of the native host plants of *P. lobata lobata* identified in Florida are also distributed in the Caribbean Region, and if the insect were to be introduced into Puerto Rico or other Caribbean countries, natural areas there would likewise be threatened.

### Pest Management Prospects

Virtually nothing has been published on the biology or control of this species. It has rapidly become a major pest in southeastern Florida, and it is urgent to initiate research on it. We have seen no evidence that this scale insect species has natural enemies in Florida.

Unpublished results of an experiment conducted at the University of Florida Fort Lauderdale Research & Education Center were that a root drench with the systemic insecticide imidacloprid effectively controlled *P. lobata* infesting large Benjamin fig trees. Further studies are being conducted to refine this method, and to test horticultural oils and additional chemical control methods. Because it is predicted that a very large percentage of trees and shrubs in both the urban and natural areas of Florida will become infested with this scale insect, we are investigating biological control as the only viable option for control in the long term.

### Selected References

Hamon, A. (14 June 2001). Lobate lac scale, *Paratachardina lobata lobata* (Chamberlin) (Hemiptera: Kerriidae). Pest Alert. <http://www.doacs.state.fl.us/~pi/enpp/ento/paratachardina.html> (30 October 2002).

Miller, D.R. and Y. Ben-Dov. (16 August 2002) ScaleNet <http://www.sel.barc.usda.gov/scalenet/scalenet.htm> (30 October 2002).

**Table 1.** Lobate lac scale: Host list as of October, 2002

Compiled by F. W. Howard, David McLean, Robert Pemberton, Avas Hamon, Greg Hodges, Susan Halbert, and Jeanette Wofford. Additional contributors: Michael Brommet, John Cannon, Chris and Karolynne Griffiths, Way Hoyt, Andrew Southerland, Nancy Miller, and Laura Tooley.

\* indicates species native to Florida.

*Acacia auriculiformis* Bentham (Fabaceae) - earleaf acacia  
*Acalypha wilkesiana* Mueller (Euphorbiaceae) - copperleaf  
 \* *Acer rubrum* L. (Aceraceae) - red maple  
*Annona cherimola* Miller X *A. squamosa* L. (Annonaceae) - atemoya  
 \* *Annona glabra* L. (Annonaceae) - pond-appl  
*Annona muricata* L. (Annonaceae) - soursop  
*Annona reticulata* L. (Annonaceae) - custard-apple  
*Annona squamosa* L. (Annonaceae) - sugar-appl  
*Antidesma bunius* (L.) Stengel (Euphorbiaceae) - Bignay  
 \* *Ardisia escallanoides* Schlechtendal & Camisso (Myrsinaceae) - marlberry  
*Averrhoa carambola* L. (Oxalidaceae) - carambola, starfui  
 \* *Baccharis halimifolia* L. (Asteraceae) - saltbush, groundsel-tree  
*Bauhinia* sp. (Fabaceae)  
*Blighia sapida* Konig (Sapindaceae) - akee  
*Brosimum alicastrum* Swartz (Moraceae) - Mayan breadnut, ramón, cacique  
*Brunfelsia* sp. (Solanaceae)  
*Brunfelsia nitida* Bentham (Solanaceae) - lady-of-the-night  
*Brya ebenus* (L.) DeCandolle (Fabaceae) - Jamaican raintree, West Indies ebony  
*Bucida buceras* L. (Combretaceae) - black-olive, oxhorn bucida, ucar  
 \* *Bumelia celastrina* Humboldt, Bonpland & Kunth (Sapotaceae) - saffron-plum  
 \* *Bursera simaruba* (L.) Sargent (Burseraceae) - gumbo-limbo, almácigo  
*Calliandra haematocephala* Hasskarl (Fabaceae) - powderpuff  
*Calliandra surinamensis* (Fabaceae) - pink powderpuff  
*Callistemon viminalis* Gaertner (Myrtaceae) - weeping bottlebrush  
*Calophyllum brasiliense* Cambess, des (Clusiaceae) - Brazilian beauty-leaf  
 \* *Calyptanthus pallens* Grisebach (Myrtaceae) - spicewood  
 \* *Calyptanthus zuzygium* (L.) Swartz (Myrtaceae) - myrtle-of-the-river  
*Cananga odorata* (Lam.) J. D. Hooker & T. Thomson (Annonaceae) - ylang-ylang  
 \* *Capparis cynophallophora* L. (Capparaceae) - Jamaica caper tree  
*Casuarina equisetifolia* L. (Casuarinaceae) - Australian-pine  
 \* *Celtis laevigata* Willdenow (Celtidaceae) - sugarberry  
*Cestrum nocturnum* L. (Solanaceae) - night-blooming jessamine  
 \* *Chrysobalanus icaco* L. (Chrysobalanaceae) - cocoplum  
*Chrysophyllum cainito* L. (Sapotaceae) - star-apple  
 \* *Chrysophyllum oliviforme* L. (Sapotaceae) - satinleaf  
*Cinnamomum zeylanicum* Blume (Lauraceae) - cinnamon  
*Citrus X paradisi* Macfadyen (Rutaceae) - grapefruit  
*Clausena lasium* (Loureiro) Skeels (Rutaceae) - wampi  
 \* *Clusia rosea* Jacquin (Clusiaceae) - pitch-apple, cupey  
 \* *Conocarpus erectus* L. (Combretaceae) - buttonwood, mangle botón  
*Cupaniopsis anacardioides* (A. Richard) Radlkofer (Sapindaceae) - carrotwood, tuckeroo  
*Diospyros digyna* Jacquin (Ebenaceae) - black-sapote  
 \* *Dipholis salicifolia* (L.) Alphonse DeCandolle (Sapotaceae) - willow busic  
*Dovyalis hebecarepa* (G. Gardner) Warburg (Flacourtiaceae) - Ceylon gooseberry, kitembila  
*Elaeocarpus* sp. (Elaeocarpaceae)  
 \* *Eugenia axillaris* (Swartz) Willdenow (Myrtaceae) - white-stopper eugenia  
*Eugenia brasiliensis* Lamarck (Myrtaceae) - grumichama

**Table 1.** Lobate lac scale: Host list as of October, 2002

<p> <i>Eugenia uniflora</i> L. (Myrtaceae) - Surinam-cherry            *<i>Eugenia confusa</i> DeCandolle (Myrtaceae) - redberry stopper            *<i>Exothea paniculata</i> (Jussieu) Radlkofer (Sapindaceae) - inkwood            *<i>Ficus aurea</i> Nuttall (Moraceae) - strangler fig  <i>Ficus benjamina</i> L. (Moraceae) - banyan fig  <i>Ficus microcarpa</i> (L.) (Moraceae) - Indian laurel  <i>Ficus nota</i> (Blanco) Merrill (Moraceae) - tibig  <i>Ficus rubiginosa</i> Ventenat (Moraceae) rusty leaf fig  <i>Ficus salicifolia</i> (Vahl) Berg (Moraceae) - willow-leaf fig  <i>Filicium decipiens</i> (Wight &amp; Arnot) Thwaites (Sapindaceae) - Japanese fern-tree  <i>Fortunella japonica</i> (Thunberg) Swingle (Rutaceae) - round kumquat  <i>Garcinia prainiana</i> King (Clusiaceae) - button mangosteen, serapu  <i>Gardenia jasminoides</i> Ellis (Rubiaceae) - gardenia  <i>Grewia occidentalis</i> L. (Tiliaceae) - starflower  <i>Hamelia cuprea</i> Grisebach (Rubiaceae) - Bahamas flame bush            *<i>Hamelia patens</i> Jacquin (Rubiaceae) - firebush  <i>Hibiscus rosa-sinensis</i> L. (Malvaceae) - hibiscus            *<i>Ilex vomitoria</i> Aiton (Aquifoliaceae) - yaupon holly  <i>Inga affinis</i> DeCandolle (Fabaceae) - ingá doce            *<i>Juniperus silicicola</i> (Small) Bailey (Cupressaceae) - southern red-cedar            *<i>Krugiodendron ferrum</i> (Vahl) Urban (Rhamnaceae) - black ironwood  <i>Lagerstroemia indica</i> L. (Lythraceae) - crape-myrtle  <i>Lagerstroemia speciosa</i> (L.) Persoon (Lythraceae) - queen's crape-myrtle  <i>Lansium domesticum</i> Correa (Meliaceae) - duku, langsung  <i>Laurus nobilis</i> L. (Lauraceae) - laurel, sweetbay  <i>Leonotis leonurus</i> Brown (Lamiaceae) - lion's-ear            *<i>Licaria triandra</i> (Swartz) Kostermans (Lauraceae) - pepperleaf sweetwood  <i>Litchi chinensis</i> Sonnerat (Sapindaceae) - lychee            *<i>Lysiloma latisiliqua</i> (L.) Bentham (Fabaceae) - wild-tamarind  <i>Lysiloma sabicu</i> Bentham  <i>Macadamia integrifolia</i> Maiden &amp; Betch (Proteaceae) - macadamia nut  <i>Macadamia tetraphylla</i> L. A. S. Johnson (Proteaceae) - macadamia nut  <i>Mangifera indica</i> L. (Anacardiaceae) - mango            *<i>Manilkara jaimiqui</i> (C. Wright) Dubard ssp. Emarginata (L.) Cronquist (Sapotaceae) - wild-dilly  <i>Manilkara (Achras) zapota</i> (L.) Van Royen (Sapotaceae) - sapodilla, nispero            *<i>Mastichodendron foetidissimum</i> (Jacquin) H. J. Lam (Sapotaceae) - false-mastic  <i>Melaleuca quiquenervia</i> (Cavanilles) S.T. Blake (Myrtaceae) - cajeput  <i>Melaleuca decora</i> (Salisbury) Britten (Myrtaceae) white feather, honeymyrtle, paperbark, sweet tea-tree.  <i>Melicocca bijuga</i> L. (Sapindaceae) - Spanish-lime, mamoncillo  <i>Michelia champaca</i> L. (Magnoliaceae) - champaka  <i>Mimusops elengi</i> L. (Sapotaceae) - Spanish-cherry  <i>Mussaenda erythrophylla</i> Schumacher &amp; Thonning (Rubiaceae)  <i>Myrciaria cauliflora</i> (C. Martius) (Myrtaceae) - jaboticaba            *<i>Myrica cerifera</i> L. (Myricaceae) - wax-myrtle, southern bayberry            *<i>Myrsine guianensis</i> (Aublet) Kuntze (Myrsinaceae) - myrsine, rapanea            *<i>Nectandra coriacea</i> (Swartz) Grisbach (Lauraceae) - lancewood  <i>Ocimum</i> sp. (Lamiaceae) - Thai basil  <i>Pachystachys lutea</i> Nees (Acanthaceae) - golden shrimp plant            *<i>Parthenocissus quinquefolia</i> (L.) Planchon (Vitaceae) - Virginia-creeper  <i>Peltophorum pterocarpum</i> (DeCandolle) K. Heyne (Fabaceae) - copperpod  <i>Persea americana</i> Miller (Lauraceae) - avocado            *<i>Persea borbonia</i> (L.) Sprengel (Lauraceae) - red bay         </p>
---

**Table 1.** Lobate lac scale: Host list as of October, 2002

<i>Petrea volubilis</i> Jaquin (Verbenaceae) - queen's wreath
<i>Phoenix roebelenii</i> O'Brian - miniature date palm
<i>Pimenta dioica</i> (L.) Merrill (Myrtaceae) - allspice
<i>Pimenta racemosa</i> (Miller) J. Moore (Myrtaceae) - bay rum
<i>Pithecellobium flexicaule</i> (Benth) J.M. Coulter (Fabaceae) - Texas ebony
<i>Polygala cowelli</i> (Britton) Blake (Polygalaceae) - violet-tree
<i>Pongamia pinnata</i> (L.) Pierre (Fabaceae) - Pongam
<i>Psidium littorale</i> Raddi (Myrtaceae) - strawberry guava, cattley guava
* <i>Psychotria ligustrifolia</i> Swartz (Rubiaceae) - wild-coffee
* <i>Psychotria nervosa</i> Swartz (Rubiaceae) - wild-coffee
* <i>Quercus geminata</i> Small (Fagaceae) - sand live oak
* <i>Quercus laurifolia</i> Michaux (Fagaceae) - laurel oak
* <i>Quercus virginiana</i> Miller (Fagaceae) - live oak
<i>Rheedia aristata</i> Grisebach (Clusiaceae) - manajú
<i>Rheedia</i> sp.
<i>Ruellia</i> sp. (Acanthaceae)
<i>Rondeletia leucophylla</i> Kunth (Rubiaceae)
<i>Rosa</i> sp. (Roseaceae) - rose
* <i>Salix caroliniana</i> Michaux (Salicaceae) - coastal plains willow
<i>Schinus terebinthifolius</i> Raddi (Anacardiaceae) - Brazilian-pepper
<i>Synsepalum dulcificum</i> Schumacher & Thonning (Sapotaceae) - miracle fruit
<i>Syzigium cuminii</i> (L.) Skeels (Myrtaceae) - jambolan, java-plum
<i>Syzigium paniculatum</i> Gaertner (Myrtaceae)
<i>Terminalia muelleri</i> Benth (Combretaceae)
<i>Terminalia catappa</i> L. (Combretaceae) - tropical-almond
* <i>Trema micranthum</i> (L.) Blume (Celtidaceae) - Florida trema, guacimilla

**Table 2.** Lobate lac scale: Host list by family as of October, 2002.

Compiled by F. W. Howard, David McLean, Robert Pemberton, Avas Hamon, Greg Hodges, Susan Halbert, and Jeanette Wofford. Additional contributors: Michael Brommet, John Cannon, Chris and Karolynne Griffiths, Way Hoyt, Andrew Southerland, Nancy Miller, and Laura Tooley.

\* indicates species native to Florida.

#### **Acanthaceae**

*Pachystachys lutea* Nees - golden shrimp plant  
*Ruellia* sp.

#### **Aceraceae**

\**Acer rubrum* L. - red maple

#### **Aquifoliaceae**

\**Ilex vomitoria* Aiton - yaupon holly

#### **Anacardiaceae**

*Mangifera indica* L. - mango  
*Schinus terebinthifolius* Raddi - Brazilian-pepper

**Table 2.** Lobate lac scale: Host list by family as of October, 2002.

<p><b>Annonaceae</b>  <i>Annona cherimola</i> Miller X <i>A. squamosa</i> L.- atemoy  *<i>Annona glabra</i> L. - pond-apple  <i>Annona muricata</i> L. - soursop  <i>Annona reticulata</i> L. - custard-apple  <i>Annona squamosa</i> L. - sugar-apple  <i>Cananga odorata</i> (Lamarck) J. D. Hooker &amp; T. Thomson - ylang-ylang</p>
<p><b>Asteraceae</b>  *<i>Baccharis halimifolia</i> L. - saltbush, groundsel-tree</p>
<p><b>Burseraceae</b>  *<i>Bursera simaruba</i> (L.) Sargent - gumbo-limbo, alm cigo</p>
<p><b>Capparaceae</b>  *<i>Capparis cynophallophora</i> L. - Jamaica caper tree</p>
<p><b>Casuarinaceae</b>  <i>Casuarina equisetifolia</i> L. - Australian-pine</p>
<p><b>Celtidaceae</b>  *<i>Celtis laevigata</i> Willdenow - sugarberry  *<i>Trema micranthum</i> (L.) Blume - Florida trema, guacimilla</p>
<p><b>Chrysobalanaceae</b>  *<i>Chrysobalanus icaco</i> L. - cocoplum</p>
<p><b>Clusiaceae</b>  <i>Calophyllum brasiliense</i> Cambessédes - Brazilian beauty-leaf  *<i>Clusia rosea</i> Jacquin - pitch-apple, cupey  <i>Garcinia prainiana</i> King - button mangosteen, serapu  <i>Rheedia aristata</i> Grisebach - manajú  <i>Rheedia</i> sp.</p>
<p><b>Combretaceae</b>  <i>Bucida buceras</i> L.- black-olive, oxhorn bucida, ucar  *<i>Conocarpus erectus</i> L. - buttonwood, mangle botón  <i>Terminalia muelleri</i> Benth  <i>Terminalia capitata</i> L. - tropical-almond</p>
<p><b>Cupressaceae</b>  *<i>Juniperus silicola</i> (Small) Bailey - southern red cedar</p>
<p><b>Ebenaceae</b>  <i>Diospyros digyna</i> Jacquin - black-sapote</p>
<p><b>Elaeocarpaceae</b>  <i>Elaeocarpus</i> sp.</p>
<p><b>Euphorbiaceae</b>  <i>Acalypha wilkesiana</i> Mueller - copperleaf  <i>Antidesma bunius</i> (L.) Stengel - Bignay</p>
<p><b>Fagaceae</b>  *<i>Quercus geminata</i> Small - sand live oak  *<i>Quercus laurifolia</i> Michaux - laurel oak  *<i>Quercus virginiana</i> Miller - live oak</p>



**Table 2.** Lobate lac scale: Host list by family as of October, 2002.

<p><b>Fabaceae</b>  <i>Acacia auriculiformis</i> Benth  <i>Bauhinia</i> sp.  <i>Brya ebenus</i> (L.) DeCandolle - Jamaican raintree, West Indies ebony  <i>Calliandra haematocephala</i> Hasskarl - powderpuff  <i>Calliandra surinamensis</i> Benth - pink powderpuff  <i>Inga affinis</i> DeCandolle - ingá doce  <i>*Lysiloma latisiliqua</i> (L.) Benth - wild-tamarind  <i>Lysiloma sabicu</i> Benth  <i>Peltophorum pterocarpum</i> (DeCandolle) K. Heyne - copperpod  <i>Pithecellobium flexicaule</i> (Benth) J.M. Coulter - Texas ebony  <i>Pongamia pinnata</i> (L.) Pierre - Pongam</p> <p><b>Flacourtiaceae</b>  <i>Dovyalis hebecarepa</i> (G. Gardner) Warburg - Ceylon gooseberry, kitebila</p> <p><b>Lamiaceae</b>  <i>Leonotis leonurus</i> Brown - lion's-ear  <i>Ocimum</i> sp. - Thai basil</p> <p><b>Lauraceae</b>  <i>Cinnamomum zeylanicum</i> Blume - cinnamon  <i>Laurus nobilis</i> L. - laurel, sweetbay  <i>*Licaria triandra</i> (Swartz) Kostermans - pepperleaf sweetwood  <i>*Nectandria coriacea</i> (Swartz) Grisbach - lancewood  <i>Persea americana</i> Miller - avocado  <i>*Persea borbonia</i> (L.) Sprengel - red bay</p> <p><b>Lythraceae</b>  <i>Lagerstroemia indica</i> L. - crape-myrtle  <i>Lagerstroemia speciosa</i> (L.) Persoon (Lythraceae) - queen's crape-myrtle</p> <p><b>Magnoliaceae</b>  <i>Michelia champaca</i> L. - champaka (Malaysia)</p> <p><b>Malvaceae</b>  <i>Hibiscus rosa-sinensis</i> L. - hibiscus</p> <p><b>Meliaceae</b>  <i>Lansium domesticum</i> Correa - duku, langsat</p> <p><b>Moraceae</b>  <i>Brosimum alicastrum</i> Swartz - Mayan breadnut, ramón, cacique  <i>*Ficus aurea</i> Nuttall - strangler fig  <i>Ficus benjamina</i> L. - banyan fig  <i>Ficus microcarpa</i> (L.) - Indian laurel  <i>Ficus nota</i> (Blanco) Merrill - tibig  <i>Ficus rubiginosa</i> Ventenat - rusty leaf fig  <i>Ficus salicifolia</i> (Vahl) Berg - willow-leaf fig</p> <p><b>Myrsinaceae</b>  <i>*Ardisia escallanoides</i> Schlechtendal &amp; Camisso - marlberry  <i>*Myrsine guianensis</i> (Aublet) Kuntze - myrsine, rapanea</p> <p><b>Myricaceae</b>  <i>*Myrica cerifera</i> L. - wax-myrtle</p>
--

**Table 2.** Lobate lac scale: Host list by family as of October, 2002.

<p><b>Myrtaceae</b>  <i>Callistemon viminalis</i> Gaertner - weeping bottlebrush  *<i>Calyptanthus pallens</i> Grisebach - spicewood  *<i>Calyptanthus zuzygium</i> (L.) Swartz - myrtle-of-the-river  *<i>Eugenia axillaris</i> (Swartz) Willdenow - white-stopper eugenia  <i>Eugenia brasiliensis</i> Lamarck - grumichama  *<i>Eugenia confusa</i> DeCandolle - redberry stopper  <i>Eugenia uniflora</i> L. - Surinam-cherry  <i>Melaleuca quiquenervia</i> (Cavanilles) S.T. Blake - cajeput  <i>Melaleuca decora</i> (Salisbury) Britten - white feather honeymyrtle, paperbark, sweet tea-tree  <i>Myrciaria cauliflora</i> (C. Martius) - jaboticaba  <i>Pimenta dioica</i> (L.) Merrill - allspice  <i>Pimenta racemosa</i> (Miller) J. Moore - bay rum  <i>Psidium littorale</i> Raddi - strawberry guava, cattley guava  <i>Syzygium cuminii</i> (L.) Skeels - jambolan  <i>Syzygium paniculatum</i> - Gaertner</p> <p><b>Oxidaceae</b>  <i>Averrhoa carambola</i> L. - carambola, starfruit</p> <p><b>Palmae</b>  <i>Phoenix roebelenii</i> O'Brian - miniature date palm</p> <p><b>Polygalaceae</b>  <i>Polygala cowelli</i> (Britton) Blake - violet-tree</p> <p><b>Proteaceae</b>  <i>Macadamia integrifolia</i> Maiden &amp; Betch - macadamia nut  <i>Macadamia tetraphylla</i> L. A. S. Johnson - macadamia nut</p> <p><b>Rhamnaceae</b>  *<i>Krugiodendron ferrum</i> (Vahl) Urban - black ironwood</p> <p><b>Roseaceae</b>  <i>Rosa</i> sp. - rose</p> <p><b>Rubiaceae</b>  <i>Gardenia jasminoides</i> Ellis - gardenia  <i>Hamelia cuprea</i> Grisebach - Bahamas flame bush  *<i>Hamelia patens</i> Jacquin - firebush  <i>Mussaenda erythrophylla</i> Schumacher &amp; Thonning  *<i>Psychotria ligustrifolia</i> Swartz - wild-coffee (glossy)  *<i>Psychotria nervosa</i> Swartz - wild-coffee  <i>Rondeletia leucophylla</i> Kunth</p> <p><b>Rutaceae</b>  <i>Citrus X paradisi</i> Macfadyen - grapefruit  <i>Clausena lasium</i> (Loureiro) Skeels - wampi  <i>Fortunella japonica</i> (Thunberg) Swingle - round kumquat</p> <p><b>Salicaceae</b>  *<i>Salix caroliniana</i> Michaux - coastal plains willow</p> <p><b>Sapindaceae</b>  <i>Blighia sapida</i> Konig - akee  <i>Cupaniopsis anacardioides</i> (A. Richard) Radlkofer - carrotwood, tuckeroo  *<i>Exothea paniculata</i> (Jussieu) Radlkofer - inkwood  <i>Filicium decipiens</i> (Wight &amp; Arnot) Thwaites - Japanese fern-tree  <i>Litchi chinensis</i> Sonnerat - lychee  <i>Melicocca bijuga</i> L. - Spanish-lime, mamoncillo</p>
--

**Table 2.** Lobate lac scale: Host list by family as of October, 2002.

<p><b>Sapotaceae</b></p> <p>*<i>Bumelia celastrina</i> Humboldt, Bonpland &amp; Kunth - saffron-plum <i>Chrysophyllum cainito</i> L. - star-apple *<i>Chrysophyllum oliviforme</i> L. - satinleaf *<i>Dipholis salicifolia</i> (L.) Alphonse De Candolle - willow bustic *<i>Manilkara jaimiqui</i> (C. Wright) Dubard ssp. <i>Emarginata</i> (L.) Cronquist - wild-dilly <i>Manilkara (Achras) zapota</i> (L.) Van Royen ) - sapodilla, nispero *<i>Mastichodendron foetidissimum</i> (Jacquin) H. J. Lam - false-mastic <i>Mimusops elengi</i> L. - Spanish-cherry <i>Synsepalum dulcificum</i> Schumacher &amp; Thonning - miracle fruit</p> <p><b>Solanaceae</b></p> <p><i>Brunfelsia</i> sp. <i>Brunfelsia nitida</i> Bentham - lady-of-the-night <i>Cestrum nocturnum</i> L. - night-blooming jessamine</p> <p><b>Tiliaceae</b></p> <p><i>Grewia occidentalis</i> L. - starflower</p> <p><b>Verbanaceae</b></p> <p><i>Petrea volubilis</i> Jaquin - queen's wreath</p> <p><b>Vitaceae</b></p> <p>*<i>Parthenocissus quinquefolia</i> (L.) Planchon - Virginia-creeper</p>
---