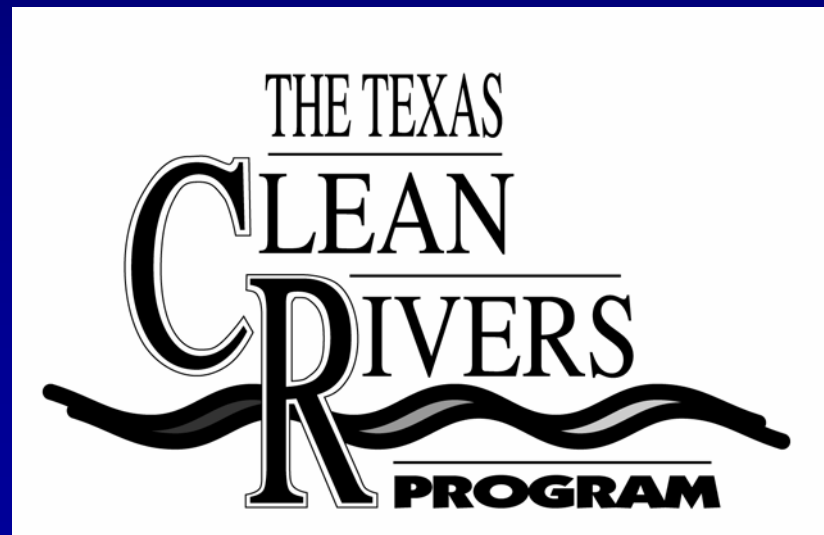




Trinity River Authority of Texas



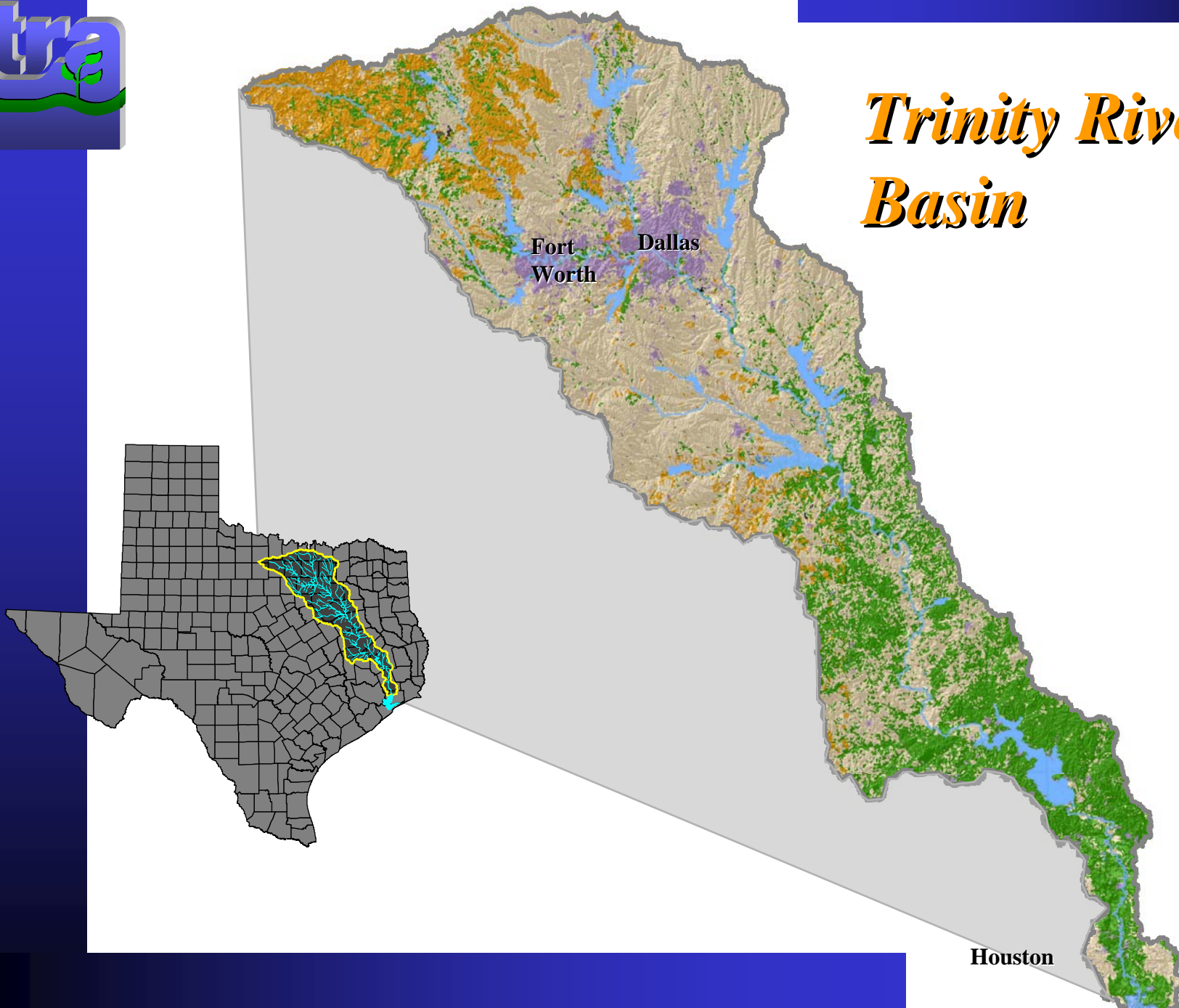


Coordinated Monitoring in the Trinity River Basin

- **Basin Overview**
- **Developing a Monitoring Network in the Trinity**
- **What's in it for Us?**
 - State Perspective**
 - TRA's Perspective**
 - Monitoring Agencies' Perspective**



Trinity River Basin



Houston

tra *Population Concentrations*

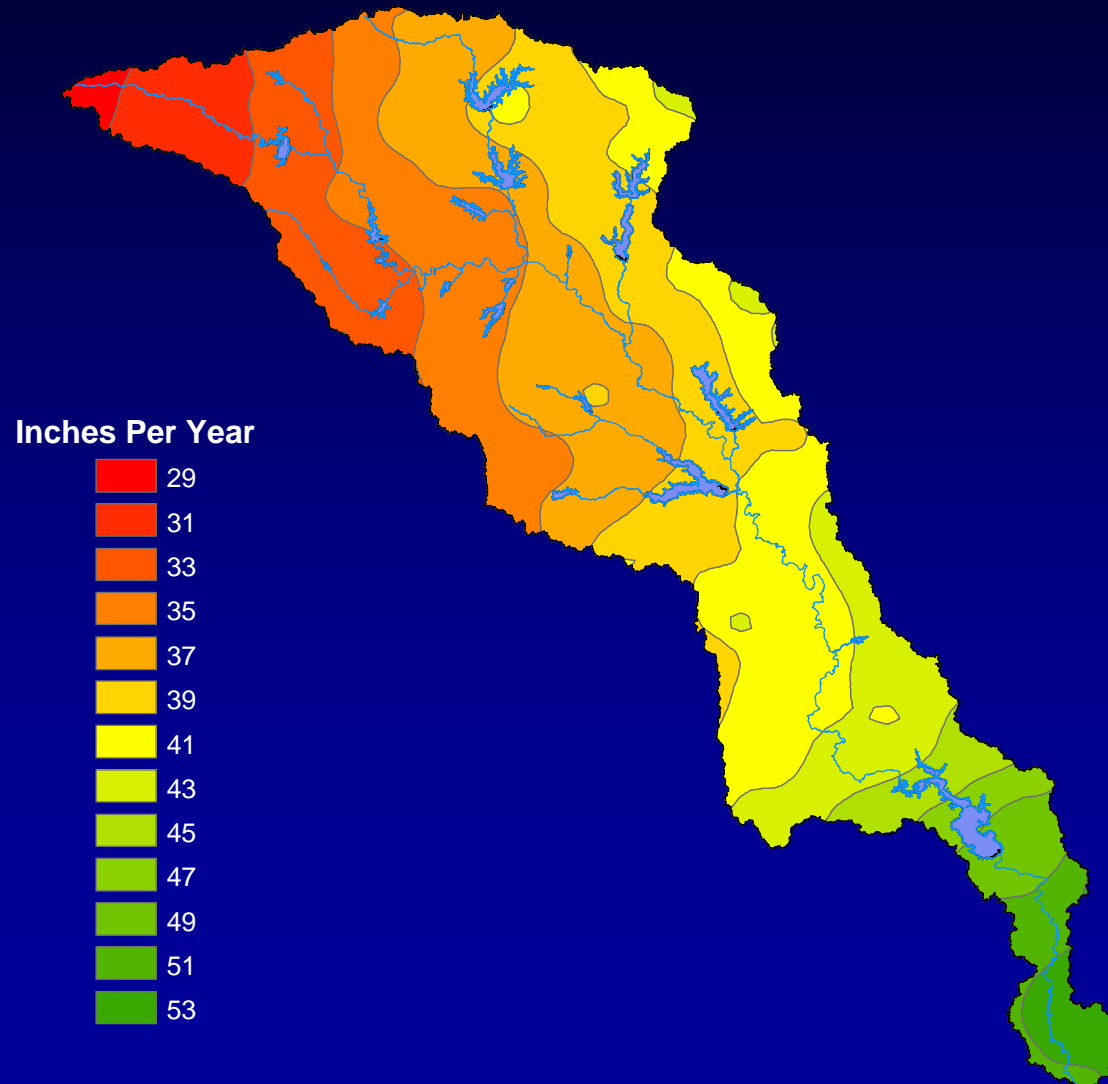
*D/FW
Population
5.5 million*



*Houston Population
5 million*



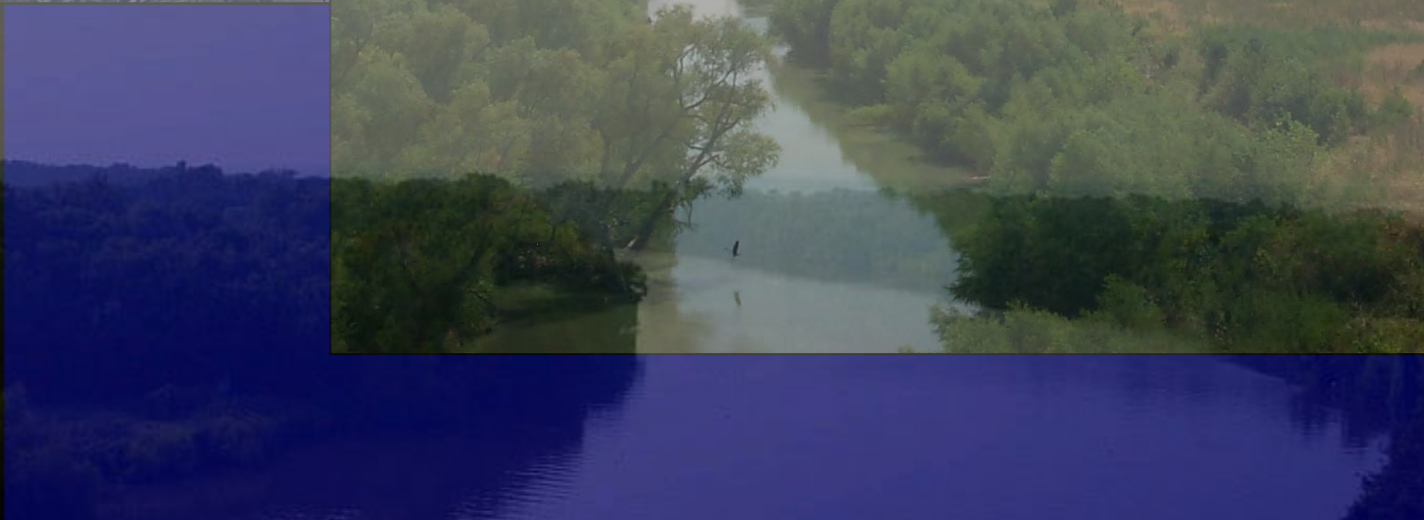
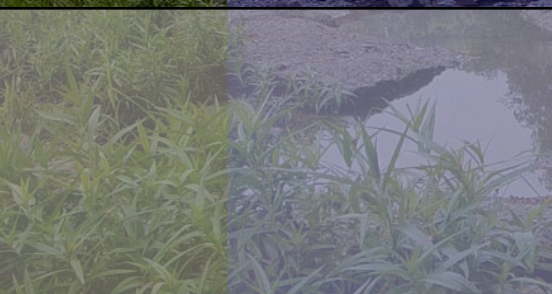
Normal Annual Precipitation For The Trinity River Basin



Source: USDA



Trinity River Basin





Clean Rivers Program: Background

- **1991 Texas Clean Rivers Act (SB 818)**
- **Goal: to Maintain and Improve the Quality of Surface Waters within Each Basin**
- **Texas Commission on Environmental Quality Administers Program**





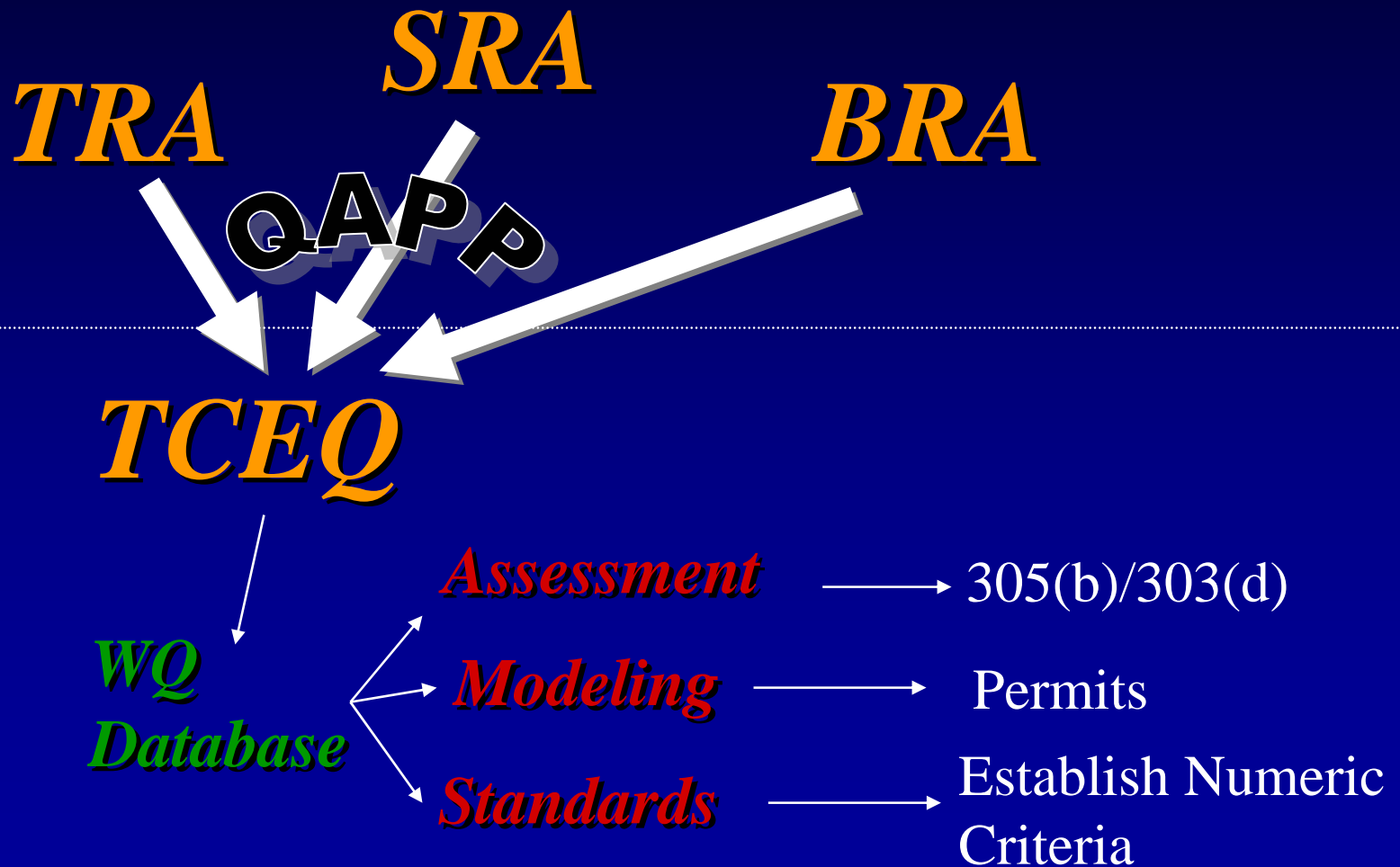
CRP Cont'd

- **Contract with River Authorities**
- **TRA is the CRP Planning Agency for the Trinity Basin**
- **Program Emphasis is on Collection of Water Quality Data for Assessment and Regulatory Purposes**





Flow of CRP Data





Coordinating Monitoring Efforts





*Monitoring
is Serious
Business!*



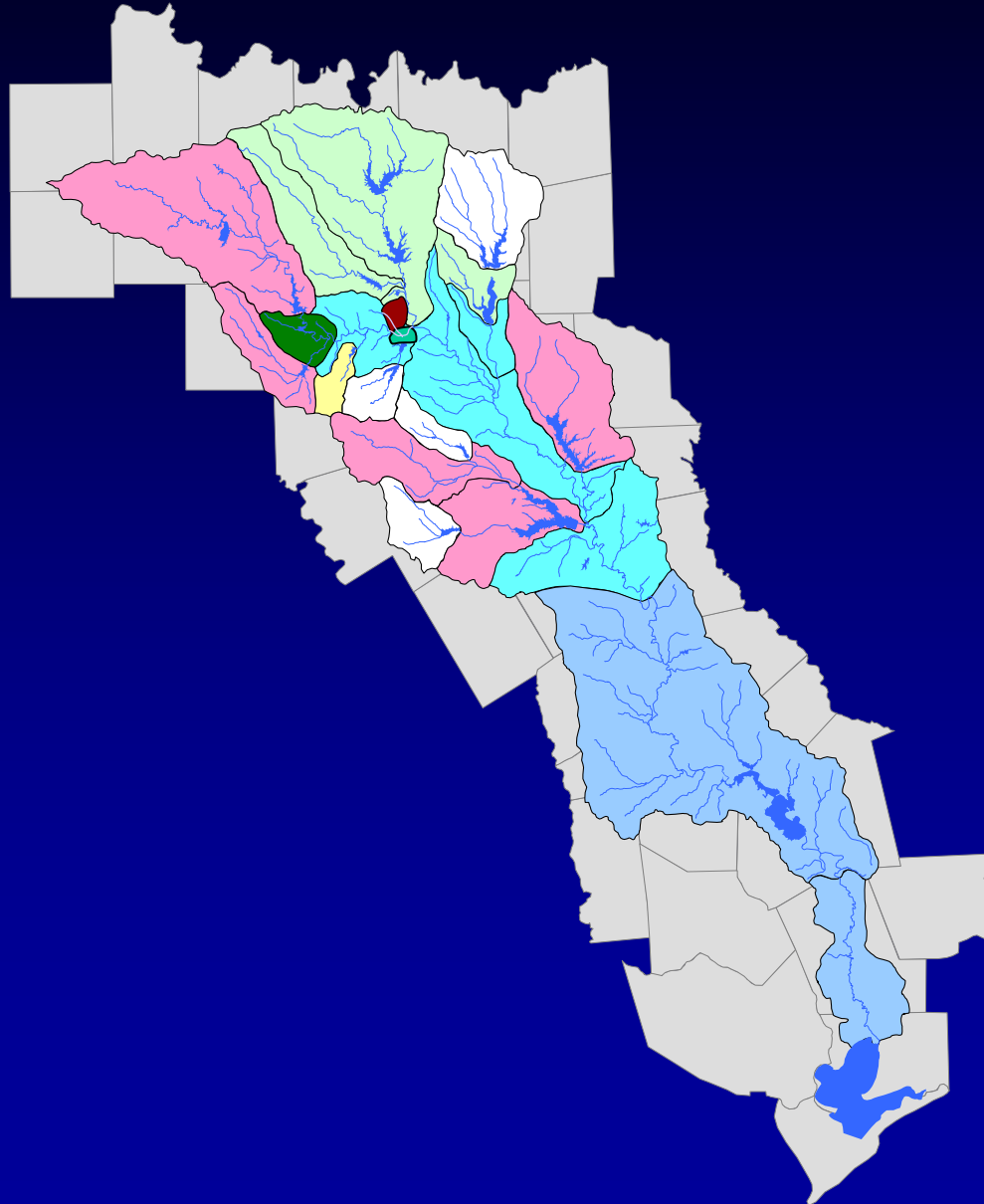


Incorporating New Programs:

- ◆ *Discuss Their Program*
- ◆ *Discuss Requirements*
- ◆ *QAPP*
- ◆ *Offer Assistance*

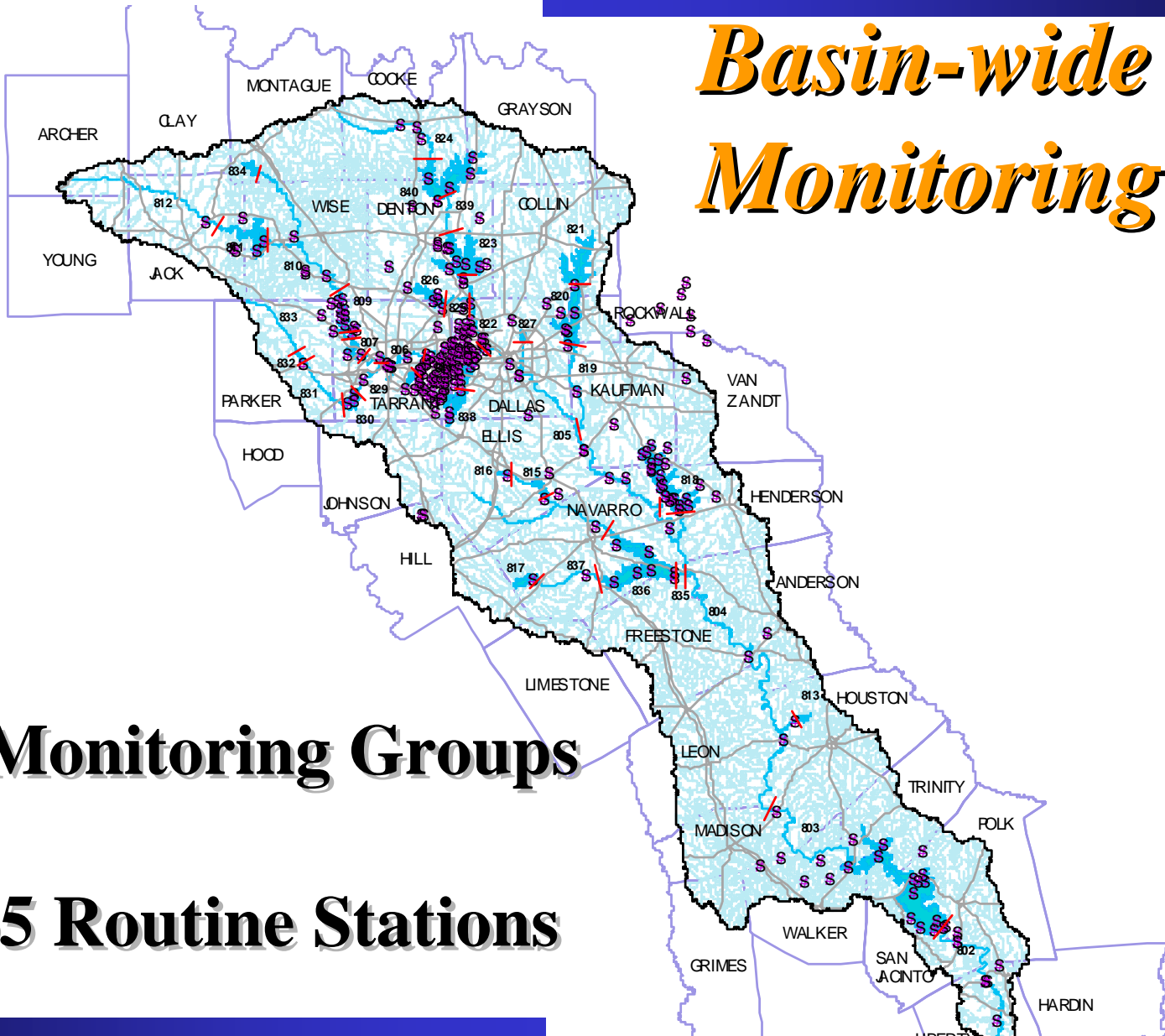


In-Basin Monitoring Entities and Subwatersheds 2004



-  **Grand Prairie**
-  **Irving**
-  **TRA GO**
-  **TRWD**
-  **TRA LLP**
-  **Arlington**
-  **Dallas**
-  **Fort Worth**

Basin-wide Monitoring



◆ **8 Monitoring Groups**

◆ **235 Routine Stations**



Data Submittal Summary

1998

2003

Sampling

Events

0

2,709

WQ

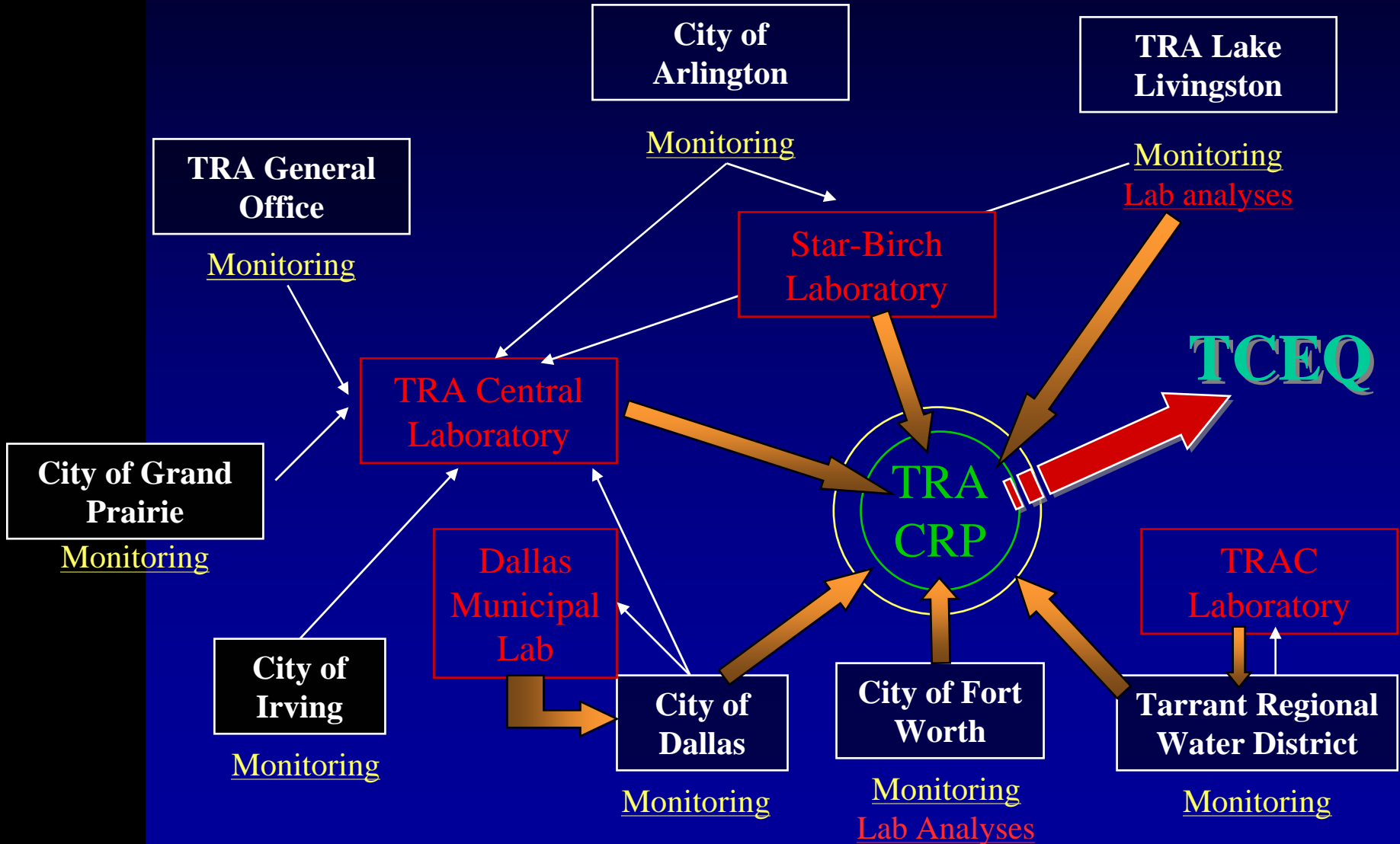
Data Points

0

36,702



Organizational Chart, Trinity River Basin Routine Monitoring Network





Coordinating Monitoring Efforts

Hold Annual Coordinated Monitoring Meetings
Coordinated Monitoring Schedule

Prepare Sample Kits

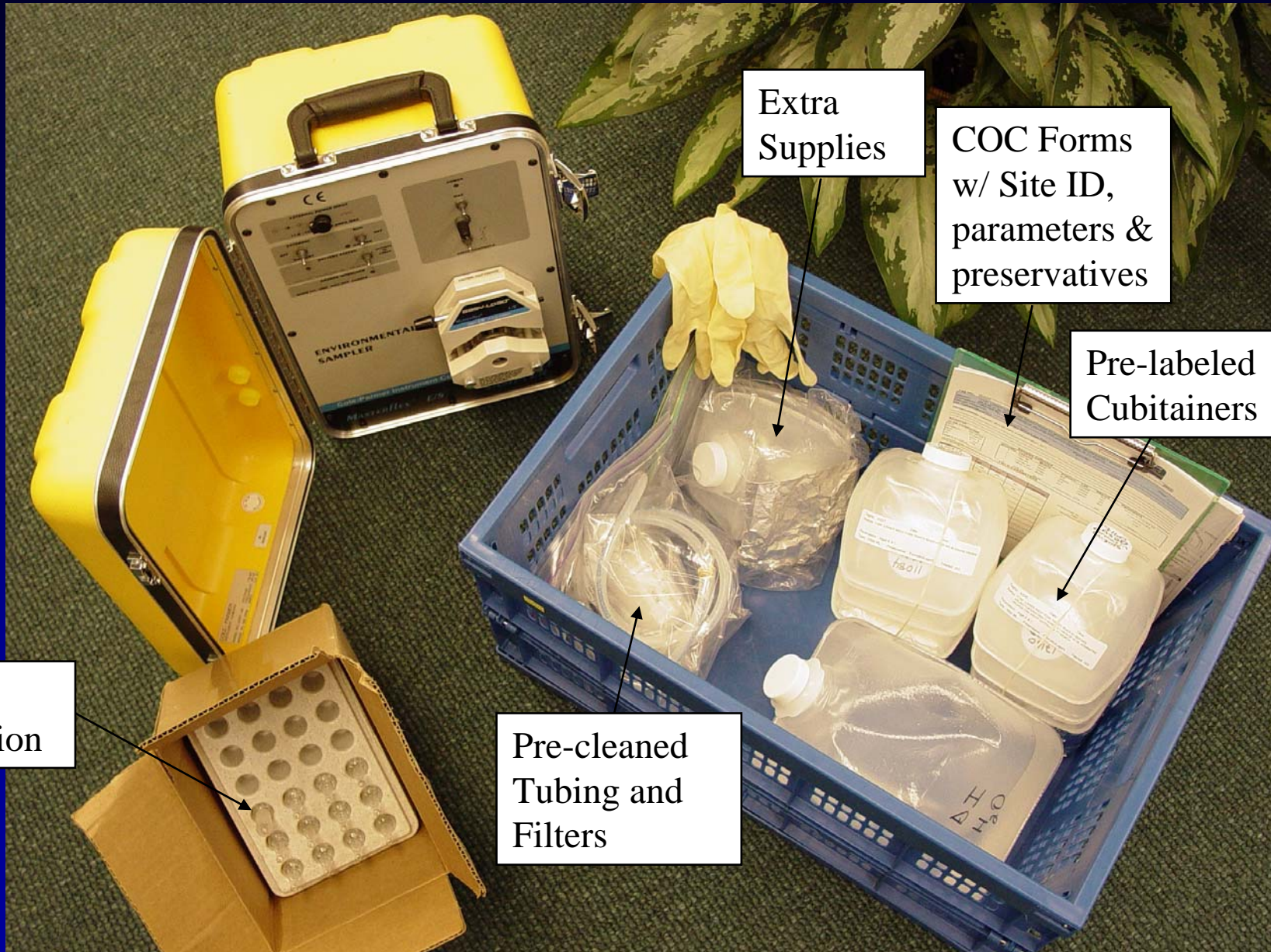
Track Samples

Host Annual Training Events

Discuss Issues at Water Quality Monitoring Committee



Sample Supply Kit



Extra Supplies

COC Forms w/ Site ID, parameters & preservatives

Pre-labeled Cubitainers

Pre-cleaned Tubing and Filters

Acid for Preservation



Annual Audit and Training





WHAT'S IN IT FOR US ?



State Perspective

- ◆ *Dramatically Increases Amount of Data Available*
- ◆ *Brings Stakeholders Into the Process*
- ◆ *Increases Awareness of WQ Issues*





TRA's Perspective

- ◆ *Achieves Density and Spatial Coverage TRA Could not Obtain Alone*
- ◆ *Avoids Painting TRA in a Regulatory Light*
- ◆ *Realizes Huge Cost Savings (>\$500,000/yr)*



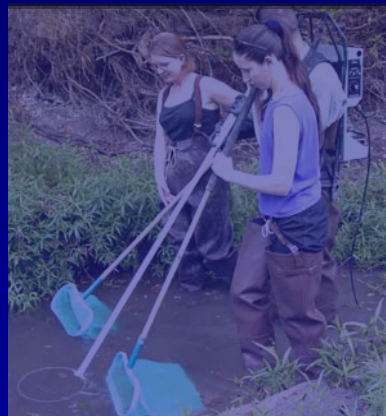


Coordinated Monitoring Stretches CRP Dollars

\$ CRP \$



Support
Coordinated
Monitoring



Conduct **Special
Studies**



Sponsor **Public
Outreach and
Education
Activities**



Participating Agencies

- ◆ *Quality Assurance Program*
- ◆ *Gain Credibility of Data*
- ◆ *Contribute Data to TCEQ for Assessment*



Participating Agencies

-- Quality Assurance Program --

Assures samples are collected, analyzed and reported in an appropriate and consistent manner

Assures data quality objectives (minimum reporting limits, lab QC) are being met

= Higher Quality Data



Participating Agencies

-- Gain Credibility of Data --

TCEQ signs off on QAPP

*Resultant data are loaded into TCEQs WQ
database*

*= Assures acceptance and use of data in
regulatory issues (e.g. disputes re permitting
issues, etc.)*



Participating Agencies

-- Contribute Data to Assessment --

*Provide larger dataset for statewide WQ
assessment – CWA 305b*

Assures participating agency data will be used

= Greater confidence in findings



Questions?

