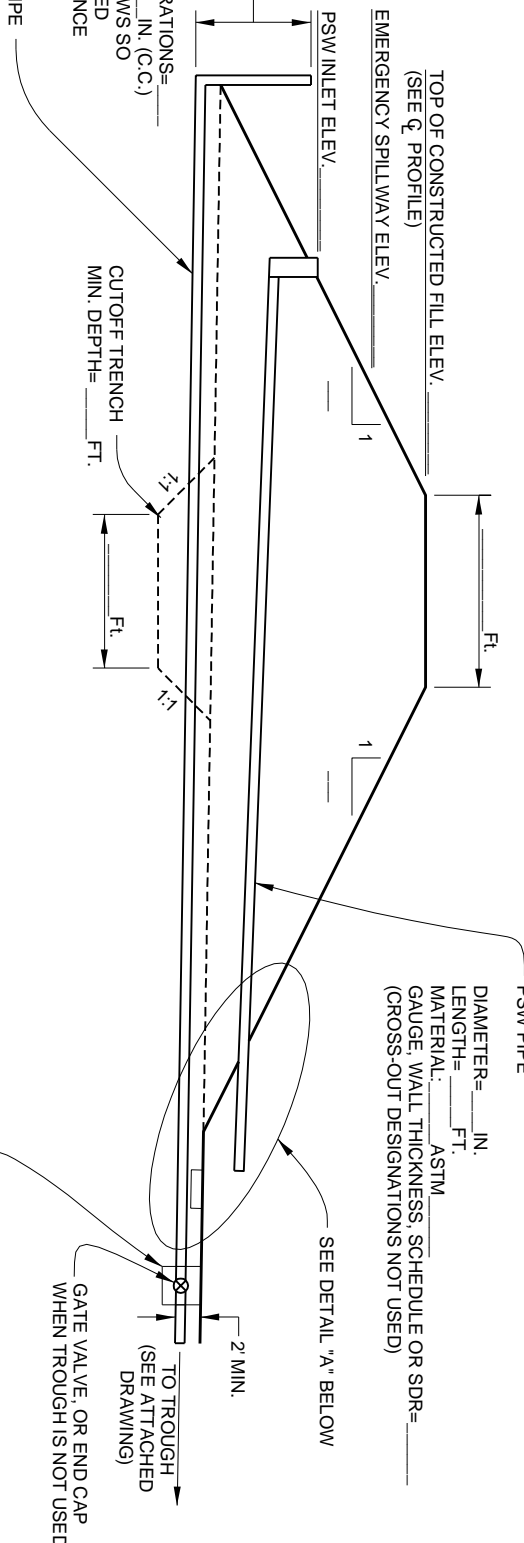


PSW INLET
(CHECK TYPE TO BE USED)

- PIPE DROP INLET (WV-ENG-12)
- CONCRETE BOX DROP INLET (WV-ENG-14)
- DROP INLET W/ CANOPY OR HOOD (WV-ENG-15)

LENGTH= _____ FT.
DIA. PERFORATIONS= _____ IN.
NO. VERTICAL ROWS OF PERFORATIONS= _____
SPACING OF PERFORATIONS= _____ IN. (C.C.)
STAGGER PERFORATIONS IN ROWS SO PERFORATIONS ARE NOT ALIGNED AROUND THE PIPE CIRCUMFERENCE

DIAMETER= _____ IN.
LENGTH= _____ FT.
MATERIAL: _____ ASTM
GAUGE, WALL THICKNESS, SCHEDULE OR SDR= _____
(CROSS-OUT DESIGNATIONS NOT USED)

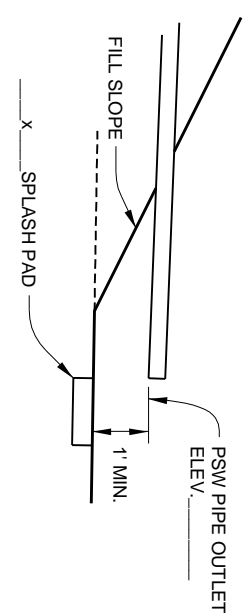


TYPICAL CROSS SECTION OF POND

(SEE PLAN VIEW FOR ACTUAL LOCATION AND ALIGNMENT OF PIPES)
(ADD SEEPAGE CONTROL DETAILS IF REQUIRED)

ESTIMATED QUANTITIES

ITEM	UNIT	QUANTITY
EARTH FILL - EMBANKMENT	CU YD.	
PSW PIPE	FT.	
WATER SUPPLY OR DRAIN PIPE	FT.	
FENCE	ROD	
RIPRAP	TON	
CONCRETE	CU YD.	
FERTILIZER	LB.	
LIME	TON	
MULCH	TON	
SEED (TYPE _____)	TON	



DETAIL A - PSW OUTLET

(FOR PONDS WITH PSW PIPES LESS THAN 15" DIA.)

NOTE: WHEN THE PSW PIPE DIA. > 15", SEE WV-ENG-16 OR WV-ENG-17

UTILITY INFORMATION:
"THE NATURAL RESOURCES CONSERVATION SERVICE MAKES NO REPRESENTATION AS TO THE EXISTENCE OR NON-EXISTENCE OF ANY UTILITIES AT THE CONSTRUCTION SITE. SHOWN ON THESE CONSTRUCTION DRAWINGS ARE THOSE UTILITIES WHICH HAVE BEEN IDENTIFIED. IT IS THE RESPONSIBILITY OF THE LANDOWNERS OR OPERATORS AND CONTRACTORS TO ASSURE THEMSELVES THAT NO HAZARD EXISTS OR DAMAGE WILL OCCUR TO UTILITIES."

FARM POND WITH DROP INLET

Job Approval Class: _____
 Cooperator: _____
 Address: _____
 Designed By: _____ Date: _____
 Checked By: _____ Date: _____
 Approved By: _____ Date: _____
 Constr. Check: _____ Date: _____