

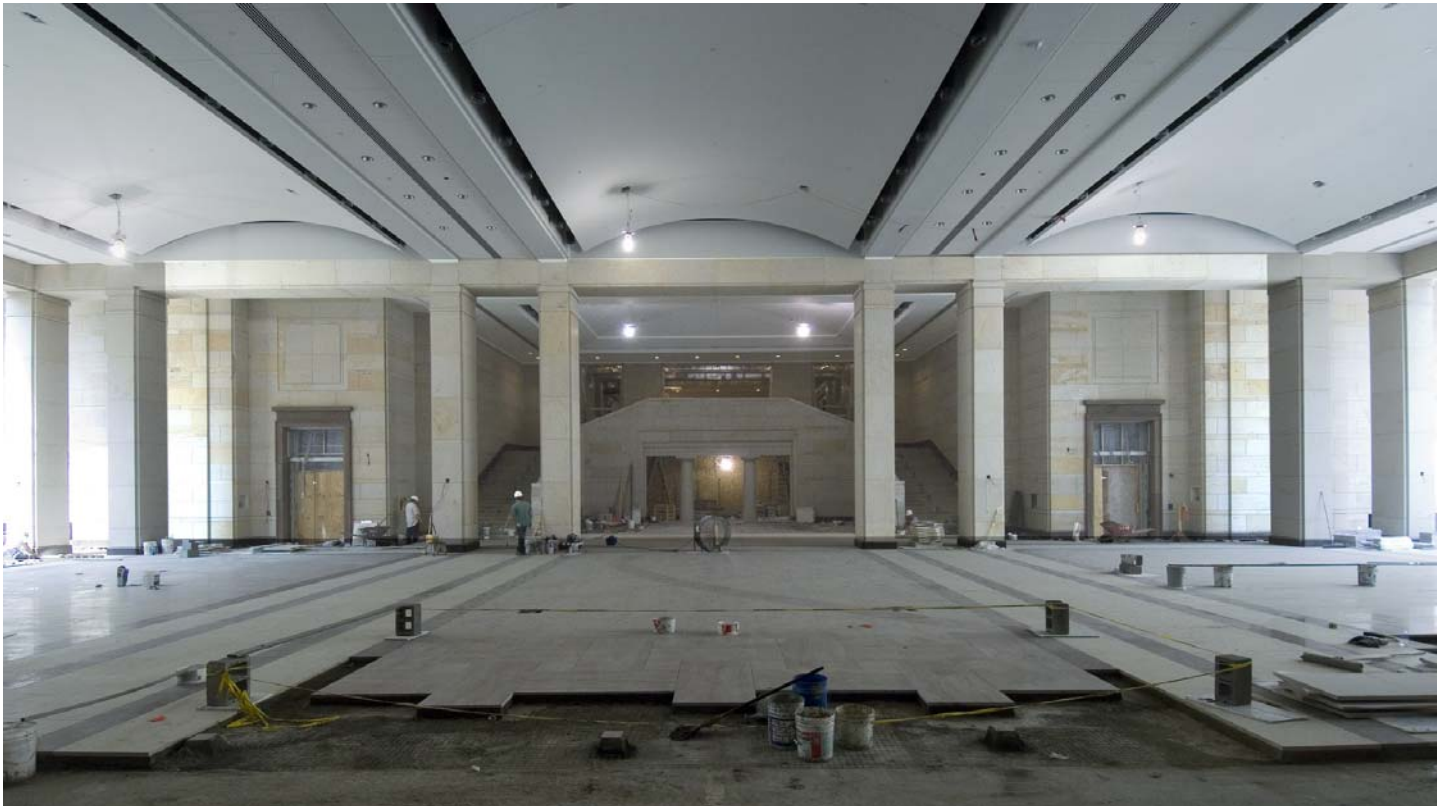


United States Capitol Visitor Center Weekly Construction Summary



Prepared by the Capitol Visitor Center Project Office, Architect of the Capitol

July 31, 2006



Masons have now set more than 55 percent of the floor stone in the Great Hall. The Hall's 35-foot-high barrel-vaulted ceiling is in full view.

This Week – Ongoing Work – 7/31/06 through 8/04/06

CVC and East Front Plaza:

- In the Great Hall mason teams continue setting the floor stone in a decorative basketweave pattern. Masons have now set approximately 55 percent of the Great Hall's 21,000 square feet of floor stone.
- A skylight installation contractor has completed installation of structure and glazing for the Great Hall skylights.
- Steel workers continue installing the steel beams and arches that will support the barrel vaulted ceiling that rises up through the East Front transition zone. Meanwhile, masons continue setting stone to the stairs, walls and overhead arches in the basement and Crypt level. Stone installation is complete on the basement level. Abatement of lead paint on the original sandstone façade is complete on the Crypt level and continues at the Rotunda level.
- In the Exhibition Hall, masons are continuing to set stone on the steps of the virtual House and Senate Theaters, the only remaining stonework in the Exhibition Hall. Crews have completed installing the ceiling insulation and plaster. Temporary dehumidification efforts are being made to condition the Exhibit Hall so that crews can begin installation of acoustic fabric ceiling panels.
- A millwork contractor continues installing wood ceiling trim in the Orientation Theaters. Larger wood ceiling panels for both theaters are expected to arrive early next week.
- Crews continue setting curb stones along the trees-lined pedestrian walkways leading to the CVC entrances and are nearly complete setting the low stone seatwall around the north and south skylights above the Great Hall.
- Stone installation is nearly 100 percent complete in both the House and Senate stairwell atria on all three levels.
- Ceiling drywall installation is complete in the Food Service area to the extent that crews can begin installation of acoustic fabric ceiling panels to the ceiling soffits above the seating area and servery areas as soon as temporary dehumidification of this area is established. This week, crews will complete construction of temporary partitions to contain the air within the Food Service area.

- Masons continue setting pavers in a decorative pattern around the north historic fountain and final blockwork is ongoing inside the bronze basins. The basins will be fully functional misting fountains when the work is completed.
- Masons continue rebuilding the historic seatwalls around the House and Senate “eggs.” A mockup of a decorative paving pattern around the south seatwall has been completed and will be reviewed later this week.
- Inside the House and Senate Expansion Space, the majority of framework and drywall installation is complete on all three levels in both spaces. Wall and ceiling “close-in” inspections for all of the mechanical, electrical, plumbing, and fire safety systems are ongoing. The ceiling grid continues being installed throughout the upper level of the Senate Expansion Space and is complete in all but two rooms on the upper level of the House Expansion Space.



A pool of water sits within an 8-foot-wide basin surrounding one of the two large Great Hall skylights to test the waterproofing membrane within the basin. Eventually, a pool of water will slowly revolve around a black granite slab that will rest on the pedestal walls visible in the center of the basin.

East Capitol Street Utility Tunnel

- CVC crews have completed installing the necessary insulation to the new utility lines where they connect to the old lines in the Second Street tunnel. A utility line valve was opened last week and the first chilled water began to flow into the CVC. A return valve is expected to open early this week to allow the flow circulation loop to an air handling unit to be complete. The air handling unit for the Exhibit Hall will be the first unit to become operational since climate control is most critical in this area because it will house precious and historic documents.

Next Week – 8/07/06 – 8/11/06

CVC, East Front Plaza Work, East Capitol Street Utility Tunnel

- Installation of millwork will continue in the North and South Orientation Theaters.
- Floor stone installation will continue in the Great Hall.
- Masons should complete stone installation to the steps that lead to the House and Senate Theaters in the Exhibit Hall.
- Installation of base and wall stone will continue inside the East Front transition zone at the Crypt level inside the East Front of the Capitol. Abatement work will continue at the Rotunda level along the south side of the East Front.
- Installation of a steel framework will continue in the East Front
- Crews are expected to continue to charge and flush line in the utility tunnel.
- Stone masons will continue installation of asphalt pavers in a decorative pattern around the north historic fountain and may begin installing decorative pavers around the south seatwall.
- Ceiling work will continue in upper and lower level corridors throughout the CVC, and in the main lobby just east of the Orientation Theaters.
- Crews will continue installing mechanical, electrical and plumbing systems, metal stud walls, drywall and ductwork, and continue paint priming in various zones throughout the House and Senate Expansion Space. Wall and ceiling close-in inspections continue throughout both expansion spaces.

For additional information about the Capitol Visitor Center project, please contact Tom Fontana, Project Communications Officer at (202) 228-1310, or by e-mail at tfontana@ao.gov. Other project information is available on the CVC web site at www.aoc.gov.