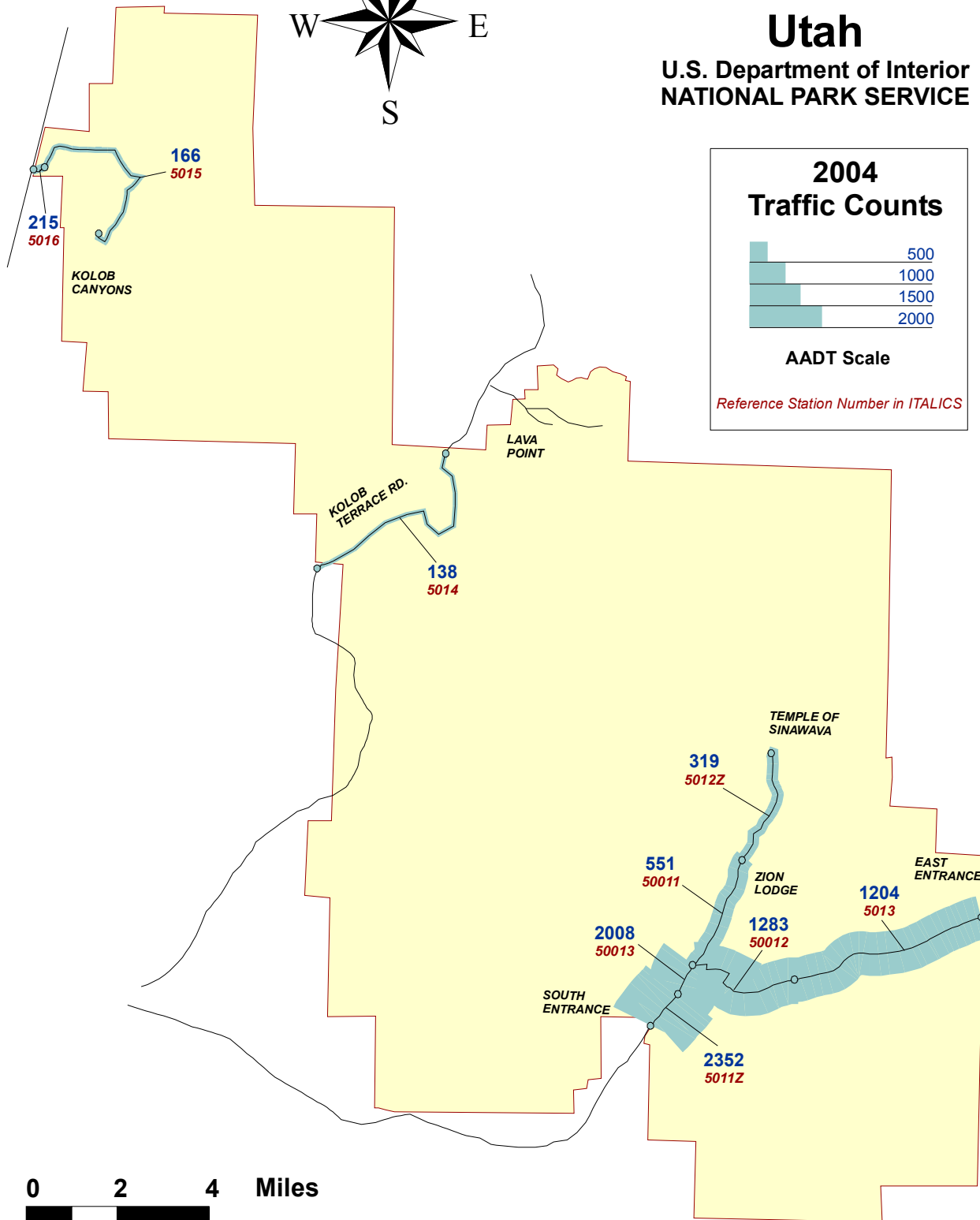
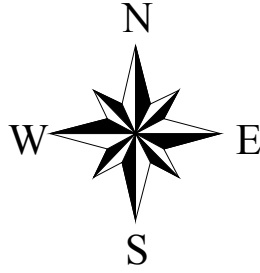


Zion National Park Traffic Package



Zion National Park Utah

U.S. Department of Interior
NATIONAL PARK SERVICE



ZION NATIONAL PARK

TRAFFIC TRENDS SUMMARY

Rt. No.	Roadway Segment	Sta. ID.	Length	AADT				VMT(1000's)			
				1988	1991	1994	2004	1988	1991	1994	2004
10	South to East Hwy.- South Entrance to Visitor Center	5011Z	0.57	1159	2028	2943	2352	241	422	612	489
10	South to East Hwy.- Visitor Center to Valley Floor Hwy.	50013	0.88	2082	2698	2972	2008	669	867	955	645
10	South to East Hwy.- Valley Floor Hwy. to Canyon Overlook	50012	4.58	1267	1447	1696	1283	2118	2419	2835	2145
10	South to East Hwy.- Canyon Overlook to East Entrance	5013	5.97	1159	1291	1547	1204	2526	2813	3371	2624
11*	Valley Floor Hwy.- South to East Hwy. to Zion Lodge	50011	2.58	1657	2137	2518	551	1560	2012	2371	519
11*	Valley Floor Hwy.- Zion Lodge to End of Road	5012Z	3.75	1203	1509	1968	319	1647	2065	2694	437
12	Kolob Terrace Rd.- West Park Bdry. to North Park Bdry.	5014	9.85	118	169	193	138	424	608	694	496
13**	Kolob Canyons Rd.- Interstate Hwy. 15 to Visitor Center	5016	0.04	162	239	323	215	2	3	5	3
13**	Kolob Canyons Rd.- Visitor Center to Viewpoint	5015	5.24	162	239	210	166	310	457	402	317
Note: AADT -- Annual Average Daily Traffic								9187	11210	13537	7357

VMT-- Vehicle Miles of Travel

* Low 2004 AADT values are due to restriction of road use to shuttle buses only from April to October.

** Route names and mileages were updated from the 1994 report

ZION NATIONAL PARK

2004 TRAFFIC VOLUME SUMMARY

Sta. ID.	STATION LOCATION	BEGIN DATE	24 HR. VOL.	SEAS. FACT.	ANN. FACT.	SADT	AADT	REF. STA.
50011	Valley Floor Hwy.- South to East Hwy. to Zion Lodge	9/28/2004	823	0.9726	0.66908	800	551	50011
50012	South to East Hwy.- Valley Floor Hwy. to Canyon Overlook	9/28/2004	2003	0.9241	0.64042	1851	1283	50012
50013	South to East Hwy.- Visitor Center to Valley Floor Hwy.	9/28/2004	2944	0.9839	0.6821	2897	2008	50013
5011Z	South to East Hwy.- South Entrance to Visitor Center	9/28/2004	3516	0.9726	0.66908	3420	2352	50011
5012Z	Valley Floor Hwy.- Zion Lodge to End of Road	9/28/2004	477	0.9726	0.66908	464	319	50011
5013	South to East Hwy.- Canyon Overlook to East Entrance	9/28/2004	1880	0.9241	0.64042	1737	1204	50012
5014	Kolob Terrace Rd.- West Park Bdry. to North Park Bdry.	9/28/2004	206	0.9726	0.66908	200	138	50011
5016	Kolob Canyons Rd.- Interstate Hwy. 15 to Visitor Center	9/28/2004	322	0.9726	0.66908	313	215	50011
5015	Kolob Canyons Rd.- Visitor Center to Viewpoint	9/28/2004	248	0.9726	0.66908	241	166	50011

Note: AADT -- Annual Average Daily Traffic

SADT -- Seasonal Average Daily Traffic computed using data for the months containing 80% of annual volume.

REF. STA. -- a permanent Automated Traffic Recorder (ATR) reference station used to obtain seasonal and annual adjustment factors for coverage counts.

ZION NATIONAL PARK

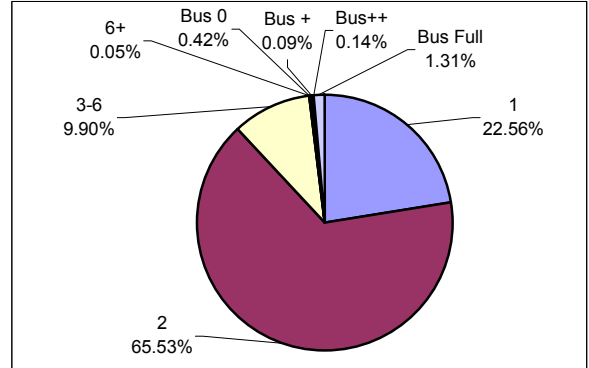
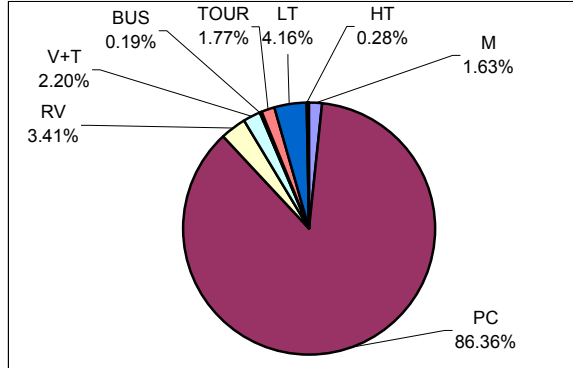
2004 TRAFFIC COMPOSITION SUMMARY

Vehicle Classification

Vehicle Occupancy

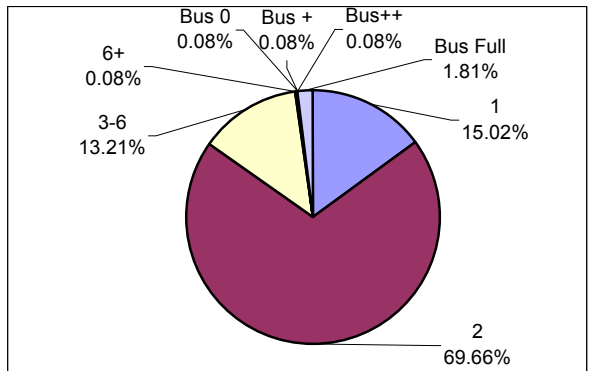
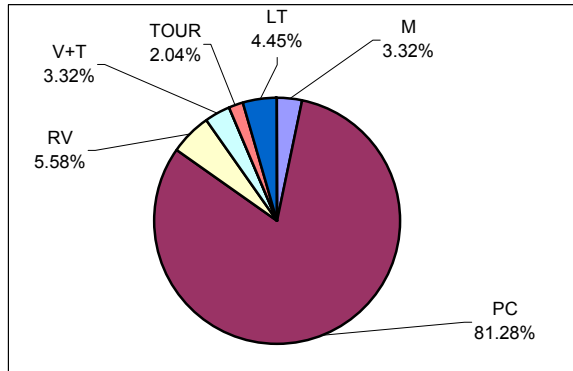
Location: STATION 5011Z

Location: STATION 5011Z



Location: STATION 5013

Location: STATION 5013



CLASSIFICATION LEGEND:

OCCUPANCY LEGEND:

No.	Vehicle Type	FHWA Class
M	Motorcycles	Class 1
PC	Passenger Cars	Class 2
RV	Recreational Vehicles	N/A
V+T	Vehicles/RV pulling Trailer	N/A
BUS	Transit/Shuttle Buses	Class 4
TOUR	Tour Buses	Class 4
LT	Light-duty Trucks	Classes 3, 5
HT	Heavy-duty Trucks	Classes 6 - 13

No.	Vehicle Occupancy
1	1 Occupant
2	2 Occupants
3-6	3-6 Occupants (car load)
6+	More than 6 Occupants, (non-Bus)
Bus 0	Bus, No Passengers
Bus +	Bus, Few Passengers
Bus++	Bus, Semi-Loaded
Bus Full	Bus, Fully Loaded

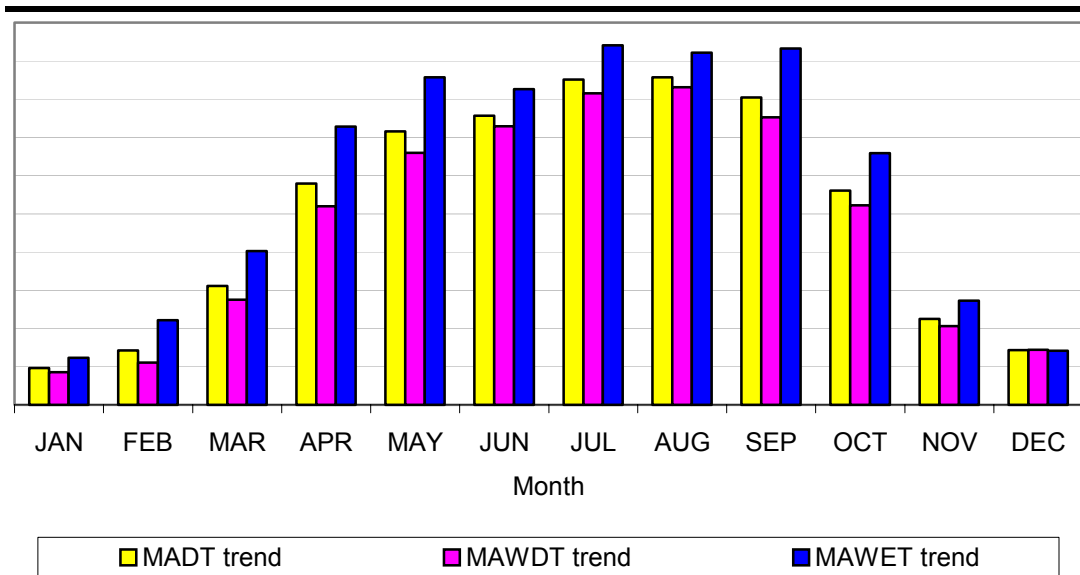
Note: Vehicle Classifications and Vehicle Occupancy values represented by 0% (No Occurrence) are not shown on the charts.

ZION NATIONAL PARK

Station: 50011 Valley Floor Hwy.- South to East Hwy. to Zion Lodge

Month	Year	Annual Average Daily Traffic Factor (AADTF)	Seasonal Average Daily Traffic Factor (SADTF)
1	1993-1994	5.8826	8.5514
2	1993-1994	4.5447	6.6065
3	1993-1994	1.8284	2.6580
4	1993-1994	0.9691	1.4088
5	1993-1994	0.7639	1.1104
6	1993-1994	0.6907	1.0041
7	1993-1994	0.6177	0.8979
8	1993-1994	0.6058	0.8807
9	1993-1994	0.6691	0.9726
10	1993-1994	0.9643	1.4018
11	1993-1994	2.4420	3.5500
12	1993-1994	3.5066	5.0975

See Section 2.1.5



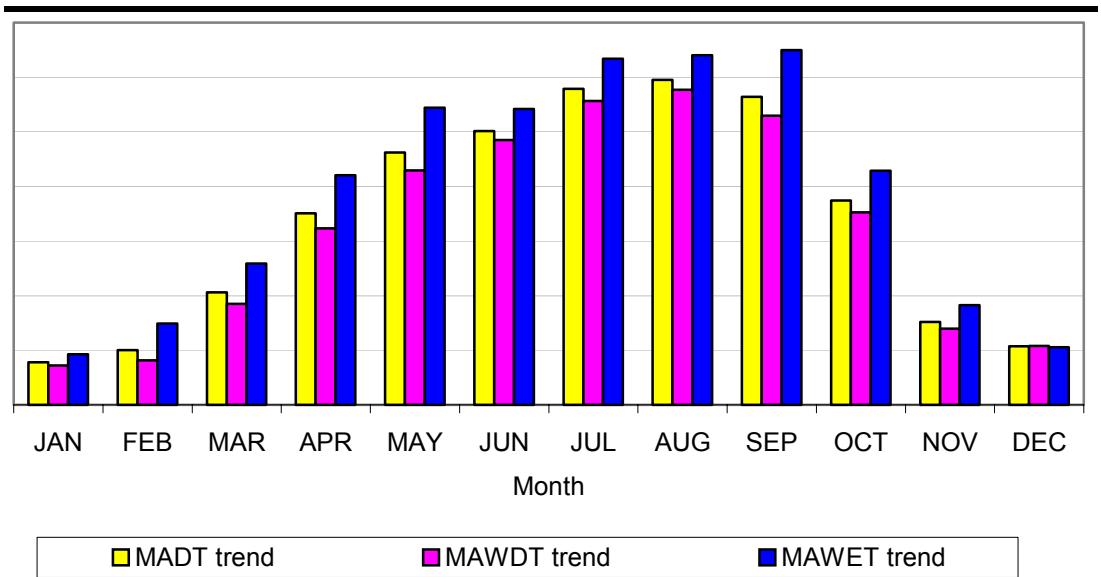
Note: AADTF is used to adjust coverage traffic volumes to AADTF volume.
 SADTF is used to adjust coverage traffic volumes to SADTF volume.
 SADT -- Seasonal Average Daily Traffic for the months containing 80% of annual volume.

ZION NATIONAL PARK

Station: 50012 South to East Hwy.- Valley Floor Hwy. to Canyon Overlook

Month	Year	Annual Average Daily Traffic Factor (AADTF)	Seasonal Average Daily Traffic Factor (SADTF)
1	1993-1994	4.6976	6.7784
2	1993-1994	4.1769	6.0271
3	1993-1994	1.8314	2.6425
4	1993-1994	1.0488	1.5133
5	1993-1994	0.7902	1.1403
6	1993-1994	0.6996	1.0095
7	1993-1994	0.6094	0.8793
8	1993-1994	0.5880	0.8485
9	1993-1994	0.6404	0.9241
10	1993-1994	0.9614	1.3872
11	1993-1994	2.4296	3.5057
12	1993-1994	3.1404	4.5315

See Section 2.1.5



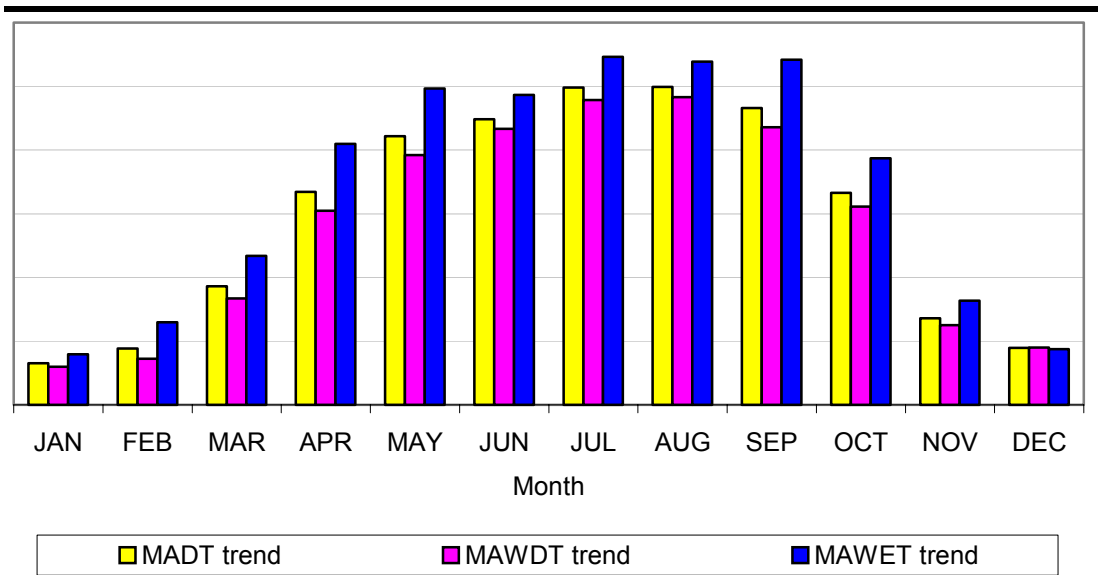
Note: AADTF is used to adjust coverage traffic volumes to AADT volume.
 SADTF is used to adjust coverage traffic volumes to SADT volume.
 SADT -- Seasonal Average Daily Traffic for the months containing 80% of annual volume.

ZION NATIONAL PARK

Station: 50013 South to East Hwy.- Visitor Center to Valley Floor Hwy.

Month	Year	Annual Average Daily Traffic Factor (AADTF)	Seasonal Average Daily Traffic Factor (SADTF)
1	1993-1994	4.9615	7.1569
2	1993-1994	4.1162	5.9377
3	1993-1994	1.7785	2.5655
4	1993-1994	0.9757	1.4074
5	1993-1994	0.7583	1.0939
6	1993-1994	0.6859	0.9894
7	1993-1994	0.6208	0.8956
8	1993-1994	0.6153	0.8876
9	1993-1994	0.6821	0.9839
10	1993-1994	0.9553	1.3780
11	1993-1994	2.3756	3.4269
12	1993-1994	3.3058	4.7686

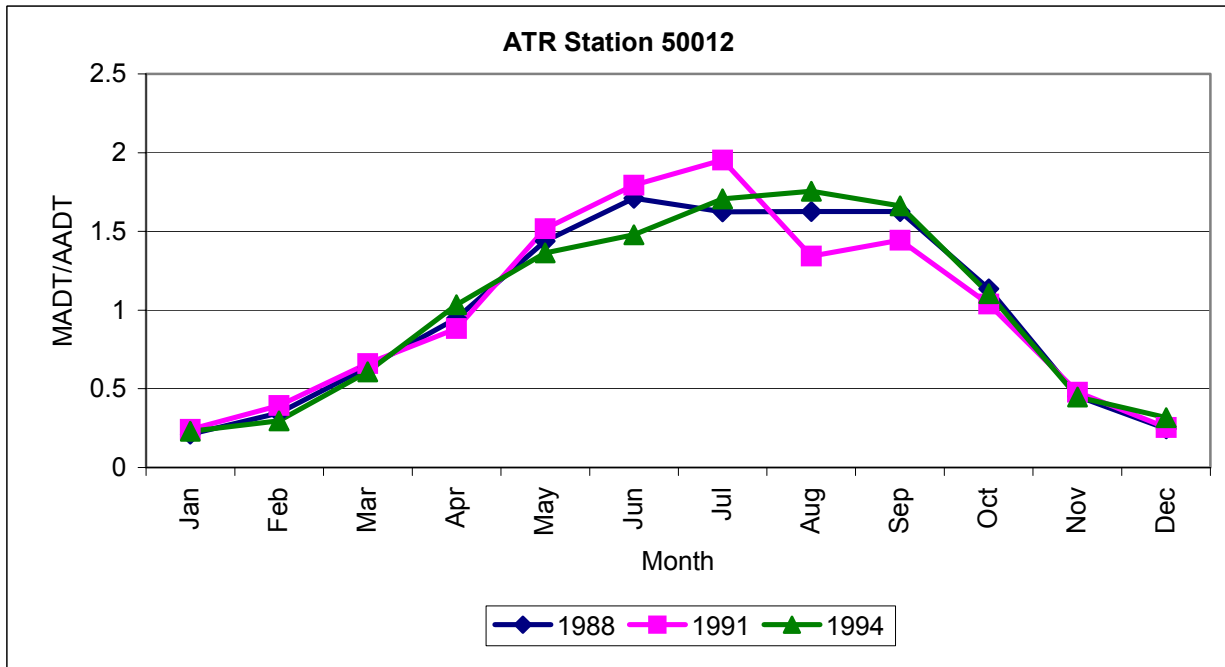
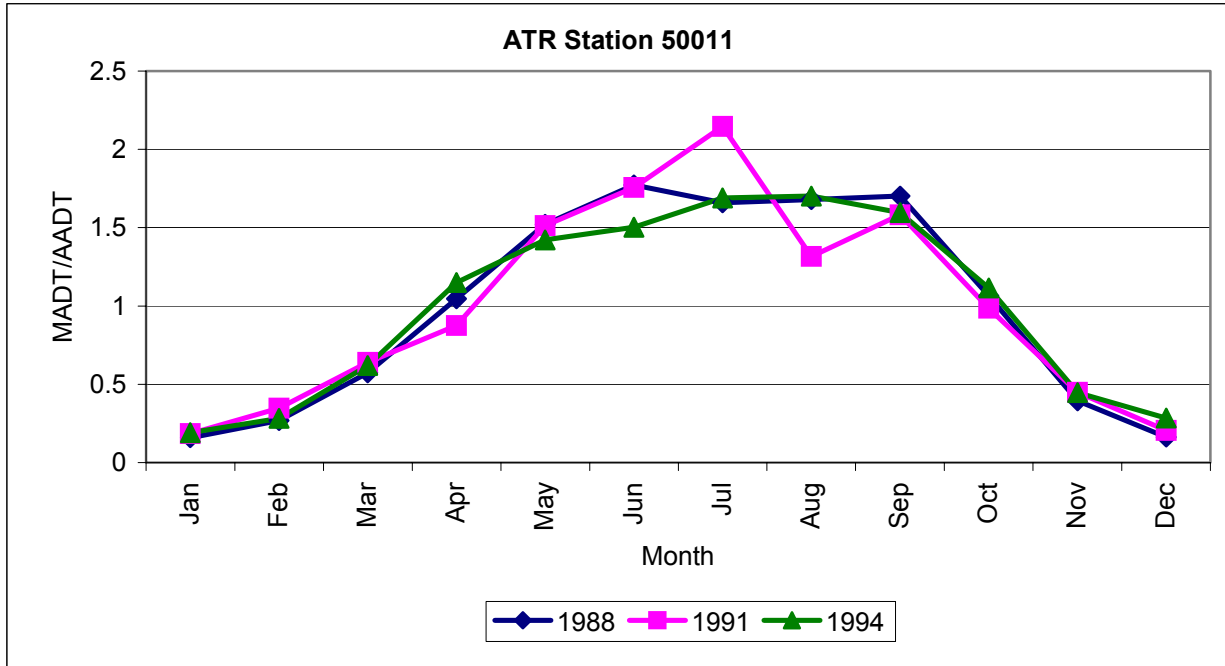
See Section 2.1.5



Note: AADTF is used to adjust coverage traffic volumes to AADT volume.
SADTF is used to adjust coverage traffic volumes to SADT volume.
SADT -- Seasonal Average Daily Traffic for the months containing 80% of annual volume.

ZION NATIONAL PARK

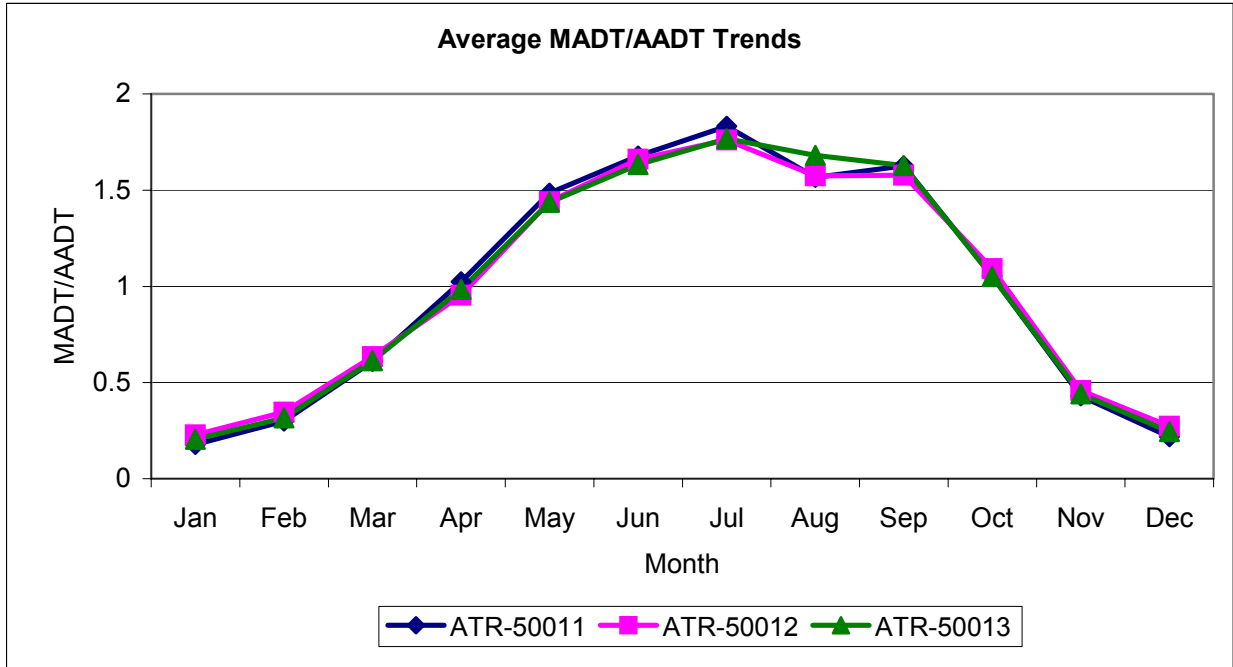
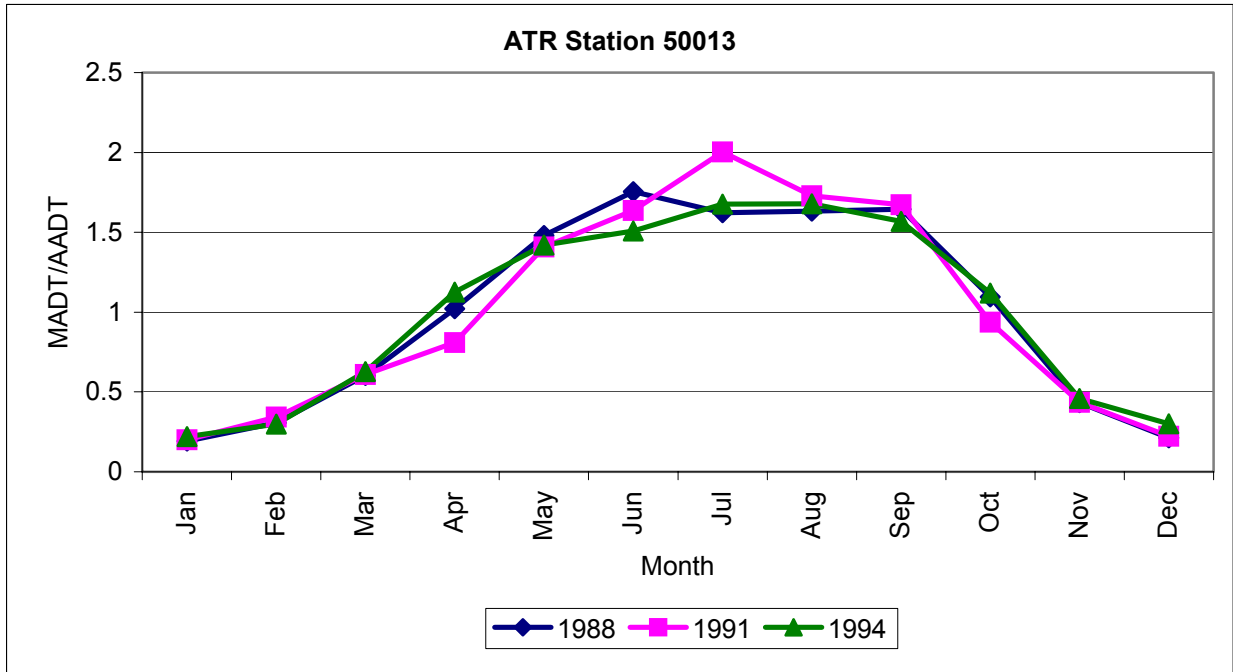
HISTORICAL SEASONAL TRAFFIC TREND SUMMARY



Note: MADT -- Monthly Average Daily Traffic
AADT -- Annual Average Daily Traffic

ZION NATIONAL PARK

HISTORICAL SEASONAL TRAFFIC TREND SUMMARY



Note: MADT -- Monthly Average Daily Traffic
AADT -- Annual Average Daily Traffic

Zion National Park Utah

U.S. Department of Interior
NATIONAL PARK SERVICE

